

## ● FCC

This equipment has been tested and found to comply with the limits for a Class B digital device, pursuant to part 15 of the FCC Rules. These limits are designed to provide reasonable protection against harmful interference in a residential installation. This equipment generates uses and can radiate radio frequency energy and, if not installed and used in accordance with the instructions, may cause harmful interference to radio communications. However, there is no guarantee that interference will not occur in a particular installation. If this equipment does cause harmful interference to radio or television reception, which can be determined by turning the equipment off and on, the user is encouraged to try to correct the interference by one or more of the following measures:

- Reorient or relocate the receiving antenna.
- Increase the separation between the equipment and receiver.
- Connect the equipment into an outlet on a circuit different from that to which the receiver is connected.
- Consult the dealer or an experienced radio/TV technician for help.

This device complies with part 15 of the FCC Rules. Operation is subject to the following two conditions: (1) This device may not cause harmful interference, and (2) this device must accept any interference received, including interference that may cause undesired operation.

### Caution: FCC/IC Radiation Exposure Statement

This equipment complies with FCC and IC RSS-102 radiation exposure limits set forth for an uncontrolled environment. This equipment should be installed and operated with a minimum distance of 20cm between the radiator and any part of your body. This transmitter must not be co-located or operating in conjunction with any other antenna or transmitter.

Pour se conformer aux exigences de conformité CNR 102 RF exposition, une distance de séparation d'au moins 20 cm doit être maintenue entre l'antenne de cet appareil et toutes les personnes. Cet émetteur ne doit pas être Co-placé ou ne fonctionnant en même temps qu'aucune autre antenne ou émetteur.

### Caution!

Any changes or modifications not expressly approved by the party responsible for compliance could void the user's authority to operate the equipment.

## ● IC

This device contains licence-exempt transmitter(s)/receiver(s) that comply with Innovation, Science and Economic Development Canada's licence-exempt RSS(s). Operation is subject to the following two conditions:

- (1) This device may not cause interference.
- (2) This device must accept any interference, including interference that may cause undesired operation of the device.

L'émetteur/récepteur exempt de licence contenu dans le présent appareil est conforme aux CNR d'Innovation, Sciences et Développement économique Canada applicables aux appareils radio exempts de licence. L'exploitation est autorisée aux deux conditions suivantes :

- 1.L'appareil ne doit pas produire de brouillage;
- 2.L'appareil doit accepter tout brouillage radioélectrique subi, même si le brouillage est susceptible d'en compromettre le fonctionnement.

This class [B] digital apparatus complies with Canadian ICES-003.

CAN ICES-003 (B) / NMB-003 (B)

Ce produit de classe [B] est conforme aux spécifications de la réglementation ICES-003 du Canada. CAN ICES-003 (B) / NMB-003 (B)

## ● CQC

注意事项：

- 1.勿在本机顶部或电源线上放置重物。
- 2.仔细阅读操作说明避免误操作。
- 3.设备不应遭受水滴或水溅，设备上不应放置诸如花瓶一类的装满液体的物品，否则水等液体的不小心洒泼可能会损坏机器。
- 4.本产品断开装置是器具耦合器，应当保持可方便的操作。
- 5.电池（电池包或组合电池）不得暴露在诸如日照、火烤或类似过热环境中。
- 6.设备应当连接到带保护接地连接的电网电源输出插座上。

## ● NCC

警語：

取得審驗證明之低功率射頻器材，非經核准，公司、商號或使用者均不得擅自變更頻率、加大功率或變更原設計之特性及功能。低功率射頻器材之使用不得影響飛航安全及干擾合法通信；經發現有干擾現象時，應立即停用，並改善至無干擾時方得繼續使用。前述合法通信，指依電信管理法規定作業之無線電通信。低功率射頻器材須忍受合法通信或工業、科學及醫療用電波輻射性電機設備之干擾。

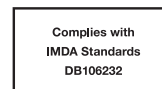
## ● TRIMAN



## ● WEEE



## ● IMDA



Product code

## Declarations of Conformity

### ● RoHS

設備名稱Equipment name：吉他音箱 型號（型式）Type designation（Type）：Spark 2						 R30776 RoHS
單元Unit	限制物質及其化學符號 Restricted substances and its chemical symbols					
	鉛Lead (Pb)	汞Mercury (Hg)	鎘Cadmium (Cd)	六價鉻 Hexavalent chromium (Cr <sup>VI</sup> )	多溴聯苯 Polybrominated biphenyls (PBB)	多溴二苯醚 Polybrominated diphenyl ethers (PBDE)
揚聲器	○	○	○	○	○	○
電路板	-	○	○	○	○	○
結構件	-	○	○	○	○	○
線材	○	○	○	○	○	○
電池	-	○	○	○	○	○
配件	○	○	○	○	○	○
備考1."超出0.1 wt %"及"超出0.01 wt %" 係指限用物質之百分比含量超出百分比含量基準值。 備考2."○" 係指該項限用物質之百分比含量未超出百分比含量基準值。 備考3."-" 係指該項限用物質為排除項目。 Note 1: "Exceeding 0.1 wt %" and "exceeding 0.01 wt %" indicate that the percentage content of the restricted substance exceeds the reference percentage value of presence condition. Note 2: "○" indicates that the percentage content of the restricted substance does not exceed the percentage of reference value of presence. Note 3: The "-" indicates that the restricted substance corresponds to the exemption.						

有毒有害物質或元素的說明 Indication of Toxic and Hazardous Substances/Elements						
產品中有毒物質或元素的名称及含量 Toxic and Hazardous Substances/Elements						
部件名称 Part name	鉛 (Pb)	汞 (Hg)	鎘 (Cd)	六价鉻 (Cr(VI))	多溴联苯 (PBB)	多溴二苯醚 (PBDE)
揚聲器 ( Speaker )	○	○	○	○	○	○
電路板 (PCBA)	X	○	○	○	○	○
結構件 (Structural parts)	X	○	○	○	○	○
线材 (Cable)	○	○	○	○	○	○
電池 ( battery )	X	○	○	○	○	○
附件 ( accessory )	○	○	○	○	○	○
本表格依据 SJ/T 11364 的规定编制 ○:表示该有毒有害物质在该部件所有均质材料中的含量均在GB/T 26572规定的限量要求以下 X:表示该有毒有害物质至少在该部件的某一均质材料中的含量超出GB/T 26572规定的限量要求						
 在中华人民共和国境内销售的电子电气产品上将印有“环保使用期”(EfuP)符号，圆圈中的数字代表产品的正常环保使用年限。						

### ● BATTERIES

A warning that batteries (battery pack or batteries installed) shall not be exposed to excessive heat such as sunshine, fire or the light.

- 1) Replacement of a battery with an incorrect type that can defeat a safeguard;
- 2) Disposal of a battery into fire or a hot oven, or mechanically crushing or cutting of a battery, that can result in an explosion;
- 3) Leaving a battery, in an extremely high temperature surrounding environment that can result in an explosion or the leakage of flammable liquid or gas;
- 4) A battery subjected to extremely low air pressure that may result in an explosion or the leakage of flammable liquid or gas.

Battery Capacity : 14.4V 6000mAh 86.4Wh,  
Type: Rechargeable Li-Ion Battery

- a. 電池丟入火焰或烤箱中，  
或將電池作可能導致爆炸的機械擠壓或切割；
- b. 電池置於可能導致爆炸或可燃性液體或  
氣體洩漏的高溫環境或極度低氣壓

### ● NBTC

"เครื่องโทรคมนาคมและอุปกรณ์นี้มีความสอดคล้องตาม  
มาตรฐานหรือข้อกำหนดทางเทคนิคของกสทช."

### ●



적합등록번호: R-R-sDI-Spark2  
기자재명칭: Guitar Amp & Bluetooth Speaker  
모델명: Spark2  
제조사: Positive Grid Limited, 제조국: 중국  
상호: 심아디엔아이(주), 서비스센터: 02-734-0653  
제조년월: 별도표기

안전확인신고번호: YU10251-20021  
제품명: 전지  
모델명: Spark Battery  
정격: 14.4Vdc 6000mAh  
제조업체: Guangdong Pow-Tech New Power  
Co.,Ltd.  
제조국: 중국

- 주의사항
- 1.고장시 임의로 분해하지 마시고 서비스센터로 연락하십시오
  - 2.통풍이 잘되는곳에서 사용하십시오
  - 3.습기 및 수분이 많은 장소에서는 사용을 금합니다

### ● CB

Max Operating temperature: 45°C



**Positive Grid®**

Visit our online Help Center for user manuals, FAQs,  
or to contact our support team: [help.positivegrid.com](mailto:help.positivegrid.com)

進口商/進口商 & 製造商: 佳格數位科技有限公司 / 佳格數位科技有限公司  
地址: 台北市中山區長春路176號11樓/台北市中山區長春路176號11樓  
TEL: 886-2-25025250

# Spark 2

# User Manual



# Table of Contents

<b>03</b>	Product Spec
<b>05</b>	Hardware Control (Top)
<b>07</b>	Hardware Control (Rear)
<b>08</b>	Pairing Spark 2 and the Spark App
<b>08</b>	To play music via Bluetooth®
<b>09</b>	USB Audio
<b>10</b>	Installing Battery
<b>11</b>	Pairing With A Spark Control X
<b>12</b>	Tuner Mode
<b>13</b>	Factory Default Settings
<b>14</b>	Factory Reset / Force Shutdown & Restart

# Product Specification

## AUDIO SPECIFICATIONS

---

### FREQUENCY RANGE

20-20000 Hz

### STEREO/MONO

STEREO

### MAXIMUM SOUND PRESSURE LEVEL

RMS : 114 dB SPL @ 1m

Peak : 120 dB SPL @ 1m

### CABINET PRINCIPLE

Bass Reflex

### POWER AMPLIFIERS

50W RMS, Class D Amplifier

### SPEAKERS

2 x 4 inch Full Range Speaker with Custom Angled Horn

### TOTAL IMPEDANCE

4 ohms

### ONBOARD LOOPER

Up to 60 seconds recording time

## POWER

---

### MAIN INPUT POWER

DC 20V, 3.25A

### BATTERY TYPE (Spark Battery)

Detachable 6,000 mAh rechargeable lithium-ion battery  
(Spark Battery sold separately.)

### CHARGING TIME

3 hours

### PLAY TIME

Up To 12 Hours (on mid volume)

## CONTROLS AND CONNECTIVITY

---

### FRONT PANEL CONTROLS

Power Button

Eight Programmable Preset Selector

Amp Controls (Gain, Bass, Mid, Treble, Master Mod, Delay, Reverb, Volume)

Bluetooth/Music Channel Volume

Looper Controls (Rec/Dub, Play/Stop, Undo/Redo/Clear)

Tap/Tuner Button

### REAR PANEL CONTROLS

Bluetooth Pair Button

### COMPUTATIONAL AUDIO

Sonic IQ Computational Audio

Dedicated Computational Audio Chip

Dynamic Range Compression

Bass Enhancement

Stereo Widening

Auto EQ

### ONBOARD EFFECTS

33 Amp Models (For electric guitar, acoustic guitar, bass)

43 Effects (Noise Gate, Compressor, Distortion, Modulation/EQ, Delay, Reverb)

Choose up to 3 pre-amp effects, 3 post amp effects, and 1 amp model for each preset

### WIRED CONNECTIVITY

1/4" Instrument Input x 1

1/8" Headphone Output x 1

1/4" Line Output x 2 (L/Mono & R)

### WIRELESS CONNECTIVITY

Bluetooth 5.0

### USB AUDIO

USB Interface for Recording, compatible with MacOS and Windows

1 In x 2 Out

24 Bit, 44.1 kHz Sample Rate

# Product Specification

## PHYSICAL UNIT

---

### DIMENSIONS

Spark 2:

L 375 x W 180 x H 214 mm

(L 14.76 x W 7.09 x H 8.43 inch)

Spark Battery (sold separately):

L 86 x W 74 x H 48.7 mm

(L3.38 x W2.91 x H1.91 inch)

### WEIGHT

Spark 2:

5.5 kg / 12.125 lb

Spark Battery (sold separately):

480g / 1.05 lb

### GRILLE CLOTH

Custom Black/Gold

## SOFTWARE

---

### MOBILE APPS

Spark App for iOS and Android (included)

Spark App Core Features

Smart Jam - 4 Drummers Included

Auto Chords

50,000+ Tones On ToneCloud®

Spark AI

Simple & Groove Looper

Video Recording

Tuner

## INCLUDED IN THE BOX

---

### BOX CONTENTS

Spark 2 Amplifier

USB C to C Cable

AC to DC Power Adapter

Get Started Card

Safety Instructions Card

## Front Panel



## Front Panel

### A - Power Switch

Hold to turn on/off Spark 2.

### B - Instrument Input (1/4")

For general electric guitars, acoustic guitars or basses.

### C - Preset Selector

Turn the knob to switch between the 8 customizable presets.

Press the knob to swap between the 4 red and 4 green preset banks.

### D - Amp Control

Controls the gain, EQ and master of the amp model in the current preset.

### E - Effect Control

Controls the MOD/DELAY/RE- VERB effect levels in the current preset.

### F - Guitar Volume Control

Controls the overall volume of your guitar.

### G - Music Volume Control

Controls the volume of Bluetooth music playback and USB audio.

### H - Looper Control (more options available in the Spark app)

REC/DUB: Tap to start recording or overdubbing. Tap again to stop recording and start playback.

PLAY/STOP: Starts/stops the loop playback. Hold to switch between Auto Mode and Signal Detection Mode for standalone recording:

- Auto Mode (Click On): Adjustable loop length. It will automatically start recording after a 1 bar count-in and stop recording when reaching the length set in the Time Settings menu in the Spark app.
- Signal Detection Mode (Click Off): Free length. It will automatically start recording when Spark 2 detects a guitar signal, users tap on the record button to stop recording. The REC/DUB LED will be yellow when entering Signal Detection Mode.

UNDO/REDO (CLEAR): Removes/restores the last layer added to the loop. Hold to completely erase the recorded loop.

### I - Tap/Tuner

Tap to set the tempo of delay effects and the looper. Hold to enter Tuner mode.

### J - Headphone Output (1/8")

Plug in a pair of headphones with a 1/8" jack.

### K - Battery Indicator

Indicates battery status. With Battery loaded:

Solid Green: Battery level 50-100%

Solid Yellow: Battery level 10-50%

Solid Red: Battery level under 10%

Flashing Green/Yellow/Red: Charging

### L - Wireless Indicators

Indicates the status of Bluetooth and Wi-Fi connections.

Solid Blue/Green: Connected

Flashing Blue/Green: Pairing

## Rear Panel



### **M - Pair Button**

Press to enter Bluetooth® pairing mode when connecting to a new device.  
Hold to enter pairing mode when connecting to Spark Control X.

### **N - Line Output (1/4")**

Connect to the input of an external device, such as a PA system, audio interface, etc.  
Use the L/Mono output if only using 1 output.

### **O - Aux input (1/8")**

Connect to the stereo 1/8" output of an external device.

### **P - USB Audio Port (USB-C®)**

Connect the supplied USB-C® to USB-C® cable to a PC/Mac to use as an audio interface.

### **Q - DC Power Input**

Connect with the supplied Power Adapter to a power outlet.

## Pairing Spark 2 And The Spark App

---

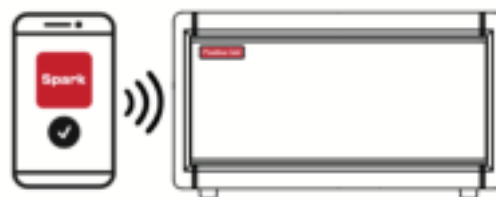
- Download the Spark app using the QR code provided or search 'Spark amp' in the App Store or Google Play Store.



- Turn on Spark 2 by holding the Power button.



- Open the Spark app on your mobile device and follow the instructions to connect your Spark to access all of the gear, smart features, and more.



## To Play Music Via Bluetooth®

---

- To pair a new device, press the Pair button on the Rear Panel of Spark 2, turn Bluetooth® on in the settings of your mobile device, and select "Spark 2 Audio" from the list of scanned devices.



- Spark 2 will automatically pair with the last device it connected to. If the last device is not available, Spark 2 will automatically connect to a device that has been previously paired.



## USB Audio

---

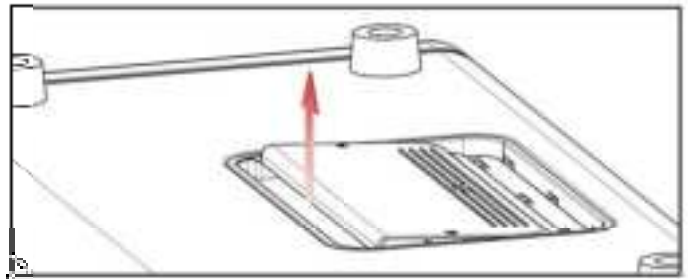
1. With Spark 2 turned off, connect to a computer via USB with the included USB cable.
2. Turn on Spark 2 and select “Spark 2 USB Audio” as the recording/playback device.
3. Adjust USB playback volume with the Music Volume buttons on Spark 2.
4. Adjust direct guitar monitoring with the Guitar Volume knob.
5. ASIO driver is required for Windows users. A download link is available on the Spark 2 support page.

## Installing Spark Battery

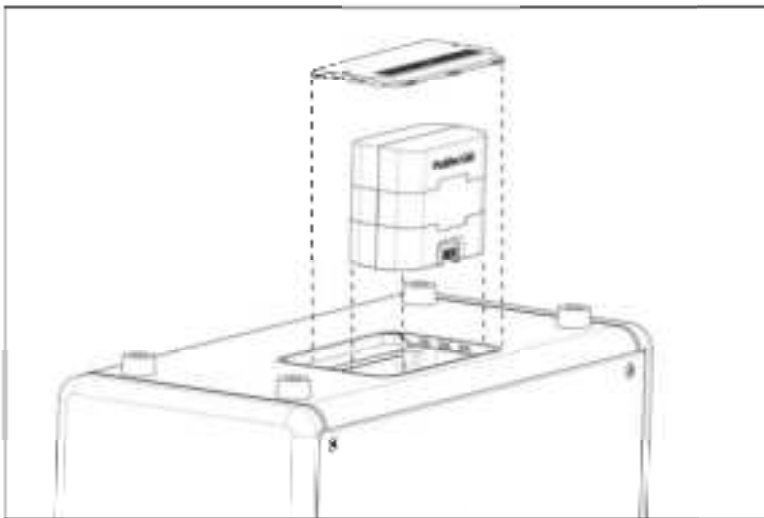
Spark 2 is only compatible with Spark Battery (sold separately). Spark 2 will use Spark Battery power when unplugged. Spark Battery features up to 10 hours of play time and automatically starts charging when Spark 2 is plugged into a power outlet.

\*Please be aware that using a third party battery can damage your Spark 2.

- Make sure Spark 2 is off and unplug the power cord.
- Open the battery cover on the bottom and lift it up



- Insert Spark Battery with the sticker facing the front grille.



- Put back the cover.

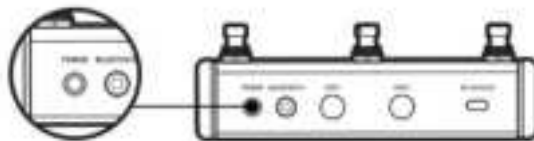


- You can now turn on Spark 2 using battery power.

## Pairing Spark Control X

---

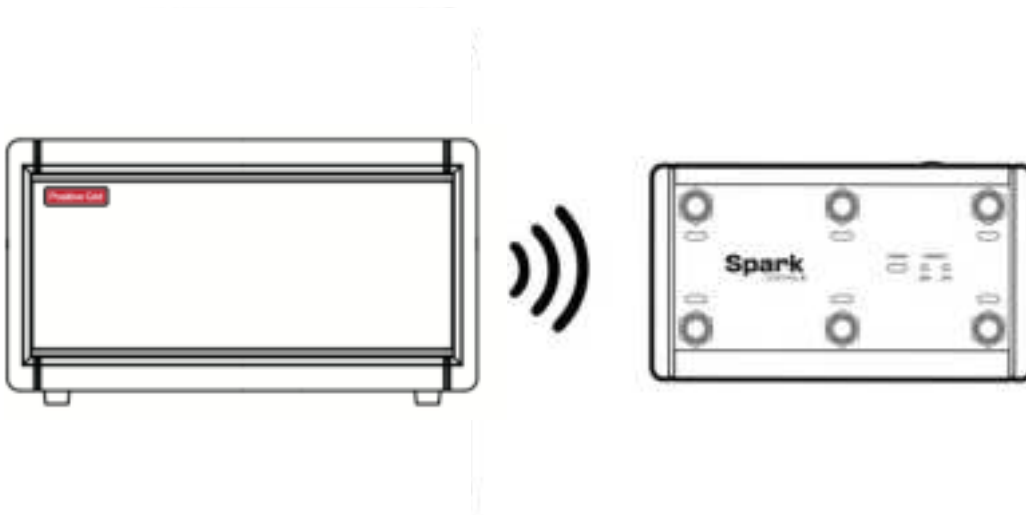
- **Step1.** Turn on Spark 2 and Spark Control X



- **Step2.** Long press the Pair button on the Rear Panel of Spark 2 until both Wireless Indicator LEDs on the Front Panel light up.



- **Step3.** Spark 2 will automatically connect to Spark Control X.



## Tuner Mode

---

- Hold the TAP/TUNER button to enter tuner mode.
- While in tuner mode, the 3 Looper LEDs will display if the string being played is in tune.
- Note that the output of Spark 2 will be muted while tuner mode is on.
- To exit tuner mode, press the TAP/TUNER button again.



Standby

Too Low

Too High

In Tune



# Factory Default Settings

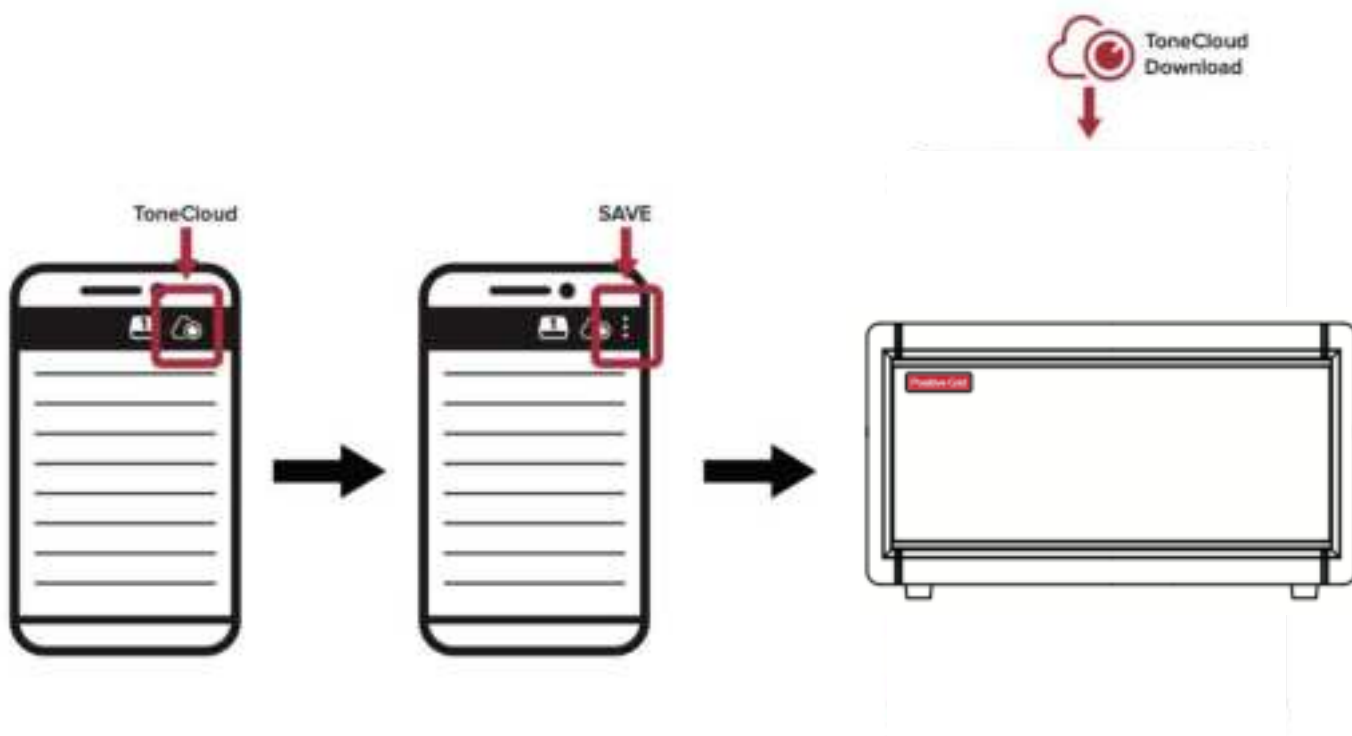
## Default Built-in Presets

---

### CH1

- Red Preset 1 : Rhythm Guitar Style Tone 1
- Red Preset 2 : Lead Guitar Style Tone 1
- Red Preset 3 : Solo Guitar Style Tone 1
- Red Preset 4 : Ambient Guitar Style Tone 1
- Green Preset 1 : Rhythm Guitar Style Tone 2
- Green Preset 2 : Lead Guitar Style Tone 2
- Green Preset 3 : Solo Guitar Style Tone 2
- Green Preset 4 : Ambient Guitar Style Tone 2

More presets can be downloaded and customized for free on ToneCloud. You can access ToneCloud via the Spark app, search for a custom preset, download it for free, and then save the preset directly to Spark 2 by tapping 'Save to hardware preset' in the menu.



## Factory Reset

---

Follow the steps below to perform a factory reset. This process will reset all the presets stored on the Spark 2 as well as Bluetooth and power saving settings.

1. Turn off your Spark 2.
2. Hold the Power Button and Preset Knob at the same time and then release the buttons when the Power Indicator turns white.
3. Hold the Power Button, until all four preset LEDs blink, then release.
4. Spark 2 will turn off automatically and will return to its factory settings when powered back on.

\*You may cancel the factory reset up until step 2 by tapping the Power Button.

## Force Shutdown & Restart

---

If Spark 2 becomes unresponsive, freezes, or emits unusual noises, follow these steps to force a shutdown and restart:

1. Hold the Power button for over 10 seconds.
2. Release the Power button, then press and hold it again to turn Spark 2 back on.