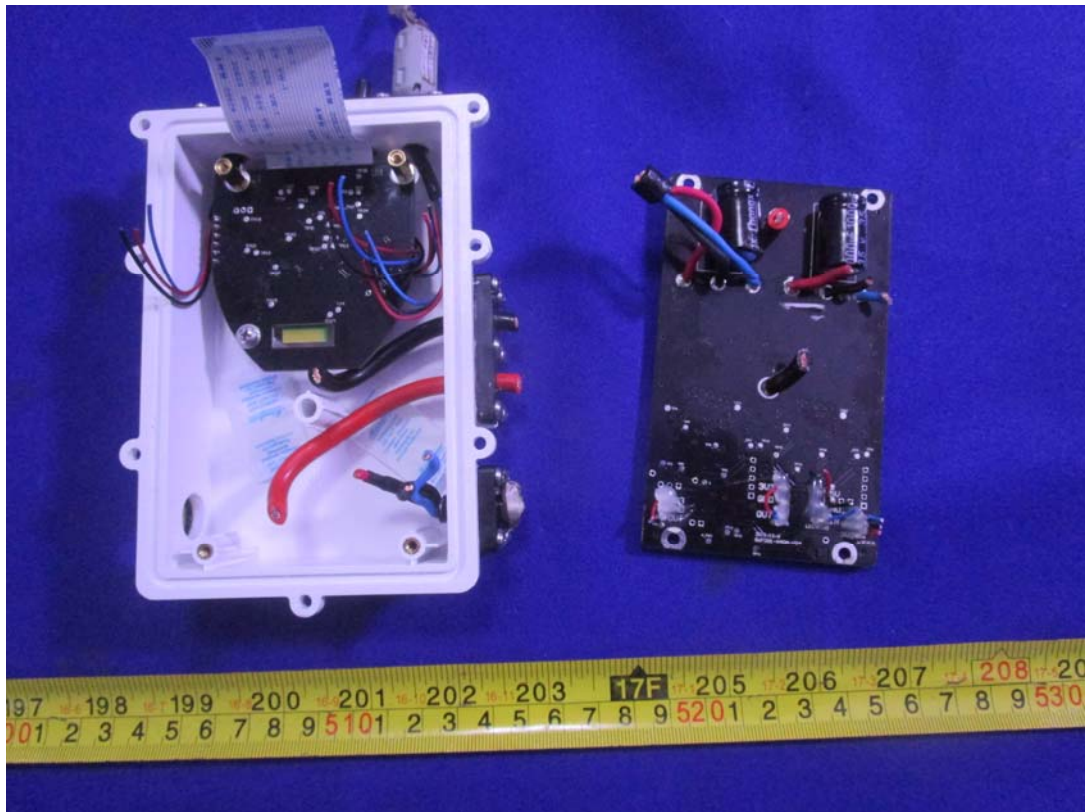
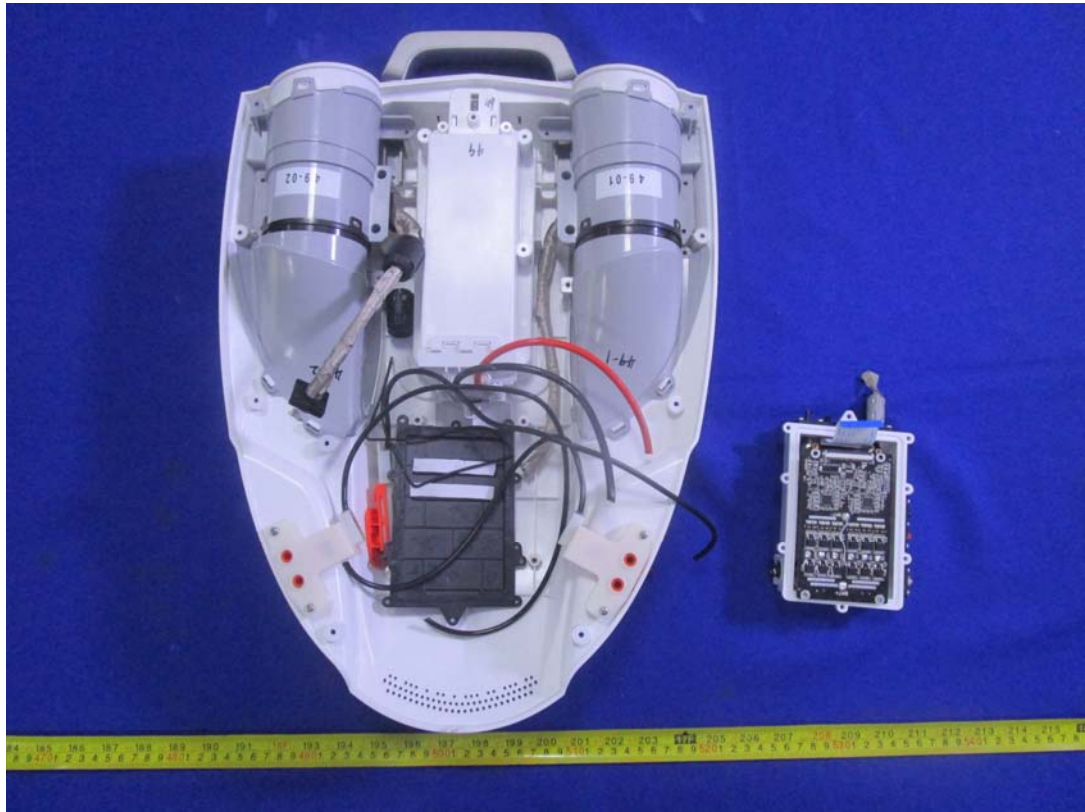


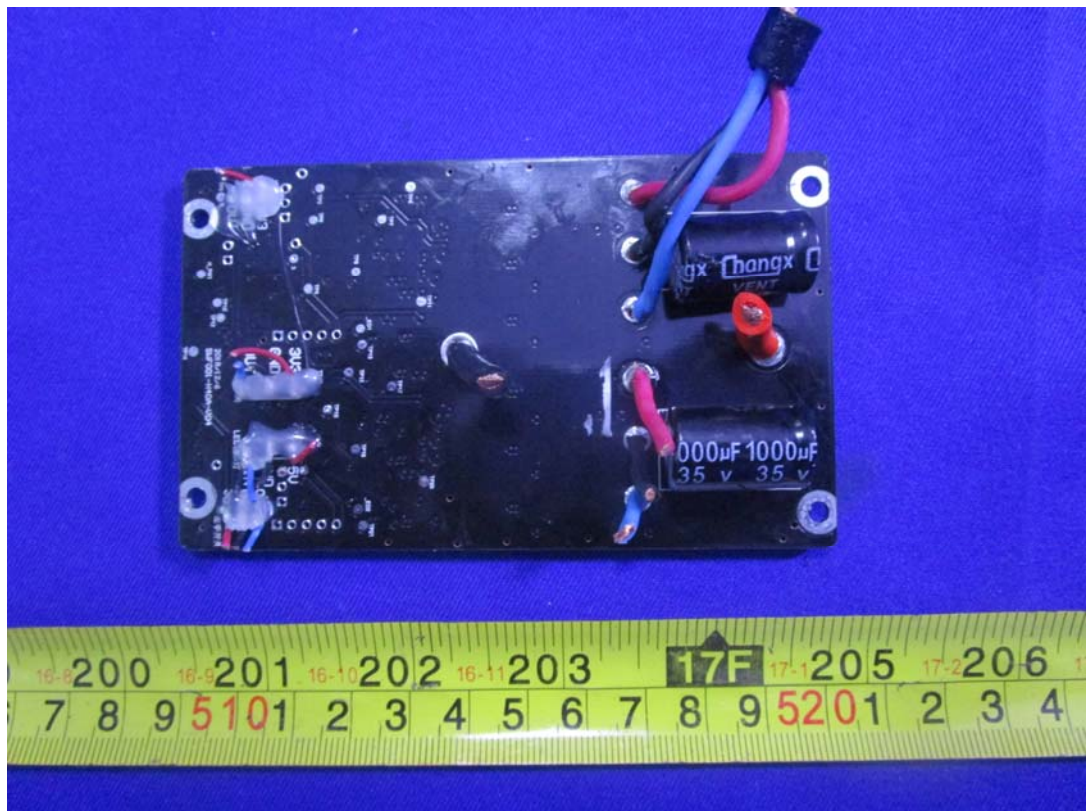
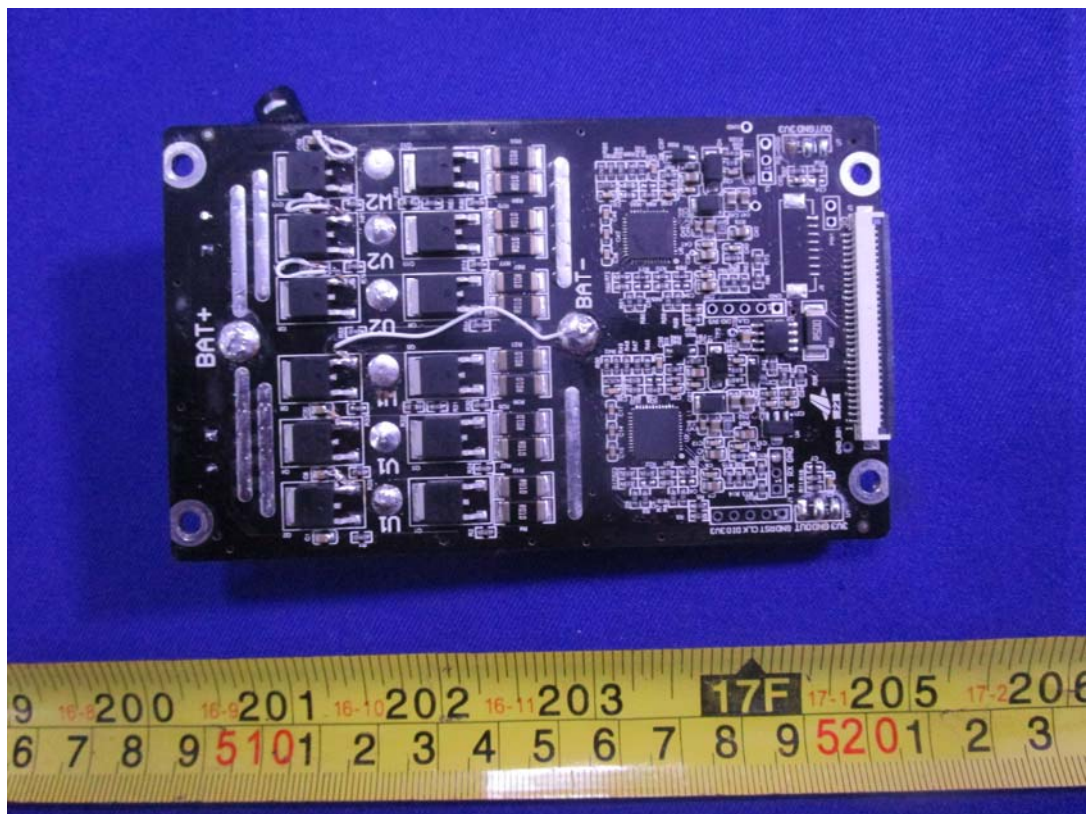
## **EXHIBIT C - EUT INTERNAL PHOTOGRAPHS**

---

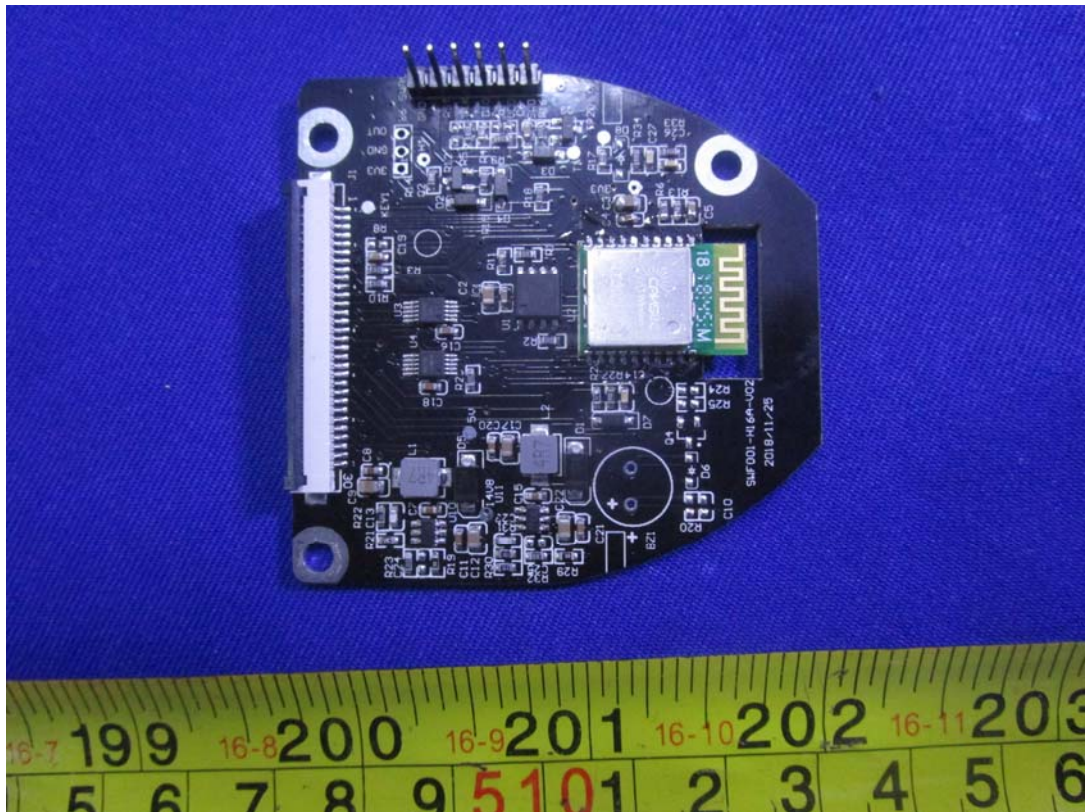
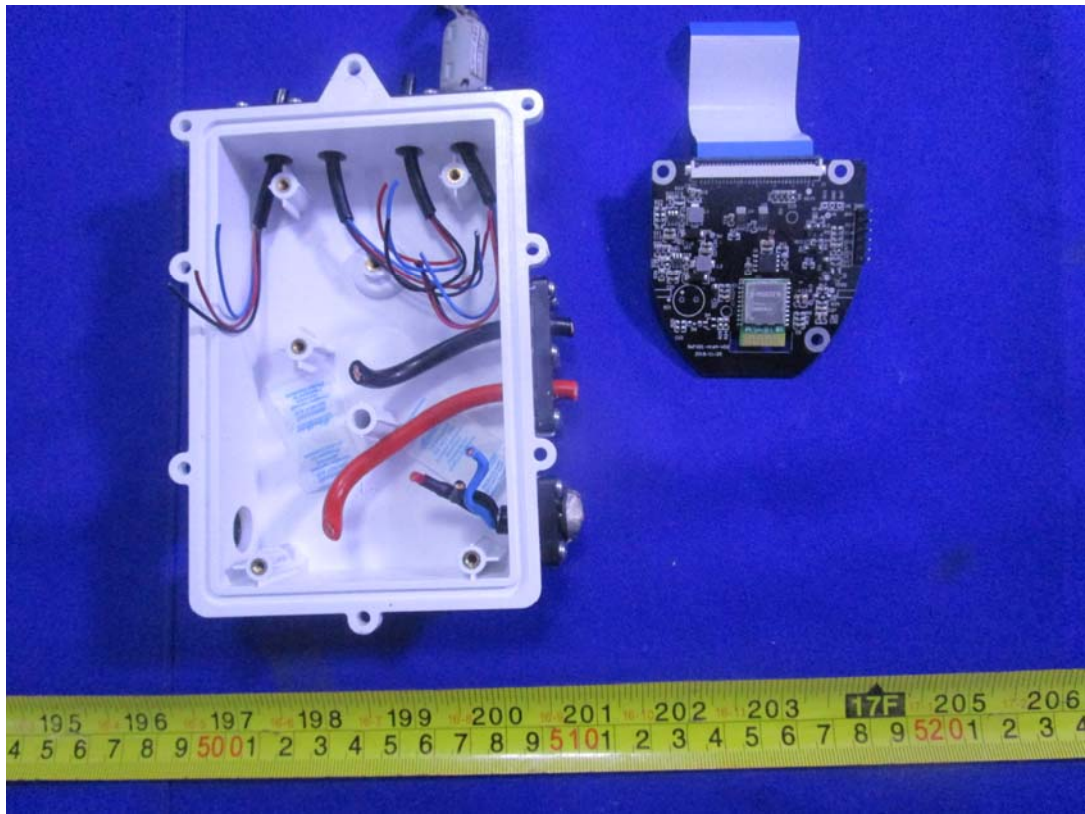




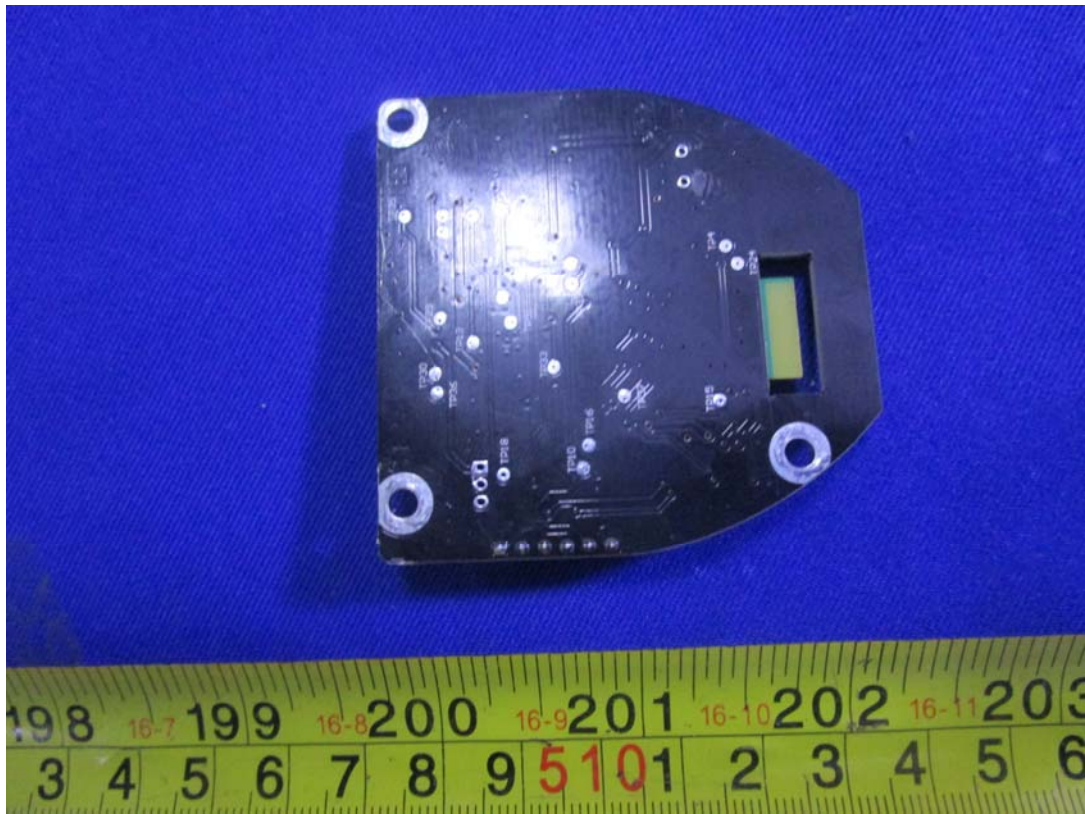




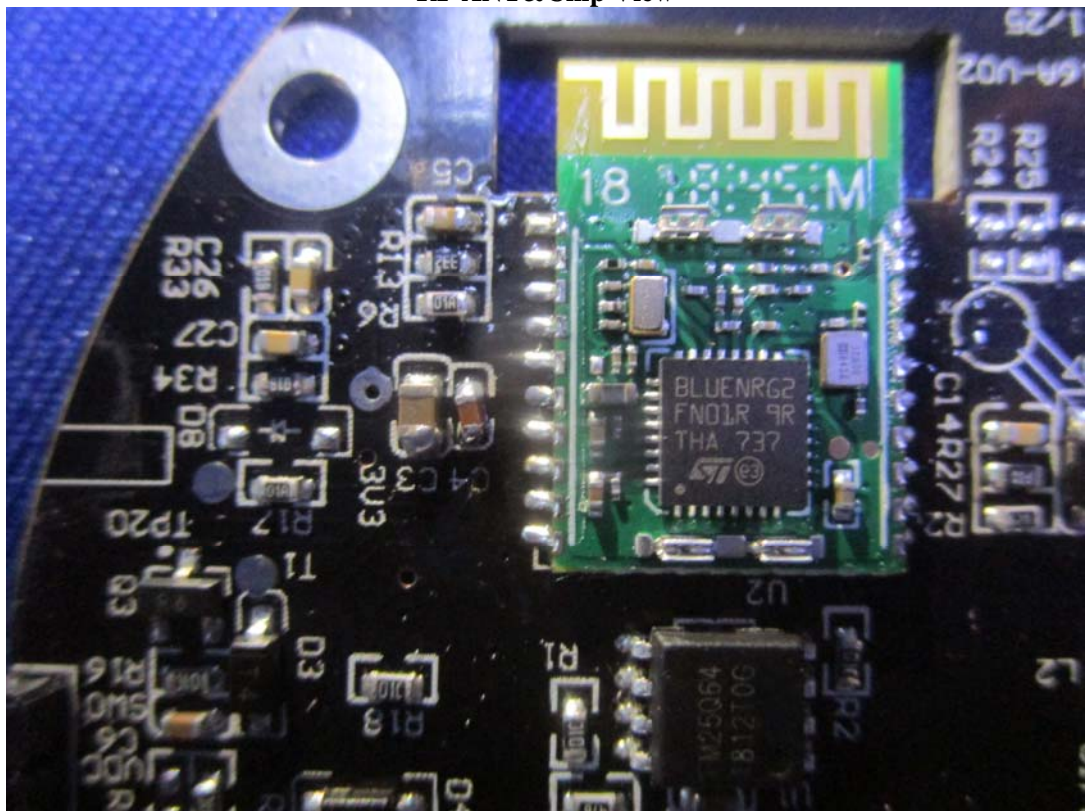








RF ANT&Chip View





**SUBWE**

Product Name: Rechargeable Li-ion Battery Pack  
Model: WB2201  
Rating: 14.8V, 10700mAh, 158.36Wh  
Manufacturer: DONG GUAN JOYSUN NEW ENERGY  
Battery Designation: 3ICP7/48/147-2

Made in China

**CAUTION**

Risk of fire and burns.  
Do not open, crush, heat above 65°C  
or incinerate.  
Follow manufacturer's instructions.  
Charging method:  
Charge Rating: 16.8V / 5350mA at  
ambient 20 °C ± 5°C.



Li-ion



株式会社セキド

RECOGNIZED  
COMPONENT



RCM



Intertek

Conforms to UL Std. 2054 / 1642



WB22010024