

L ear BLE 1M 2440MHz_Back side 0mm

Communication System: UID 0, BT(0) (0); Communication System Band: BT; Frequency: 2440 MHz;

Medium parameters used: $f = 2440$ MHz; $\sigma = 1.82$ S/m; $\epsilon_r = 39.51$; $\rho = 1000$ kg/m³

Phantom section: Flat Section

DASY Configuration:

- Probe: EX3DV4 - SN7383; ConvF(7.65, 7.65, 7.65); Calibrated: 2022/1/12;
- Sensor-Surface: 1.4mm (Mechanical Surface Detection), $z = -19.0, 31.0$
- Electronics: DAE3 Sn427; Calibrated: 2022/4/12
- Phantom: SAM; Type: QD000P40CD; Serial: 1805
- DASY52 52.8.8(1222); SEMCAD X 14.6.10(7331)

Configuration/Body/Area Scan (7x7x1): Measurement grid: $dx=12$ mm, $dy=12$ mm

Maximum value of SAR (measured) = 0.140 W/kg

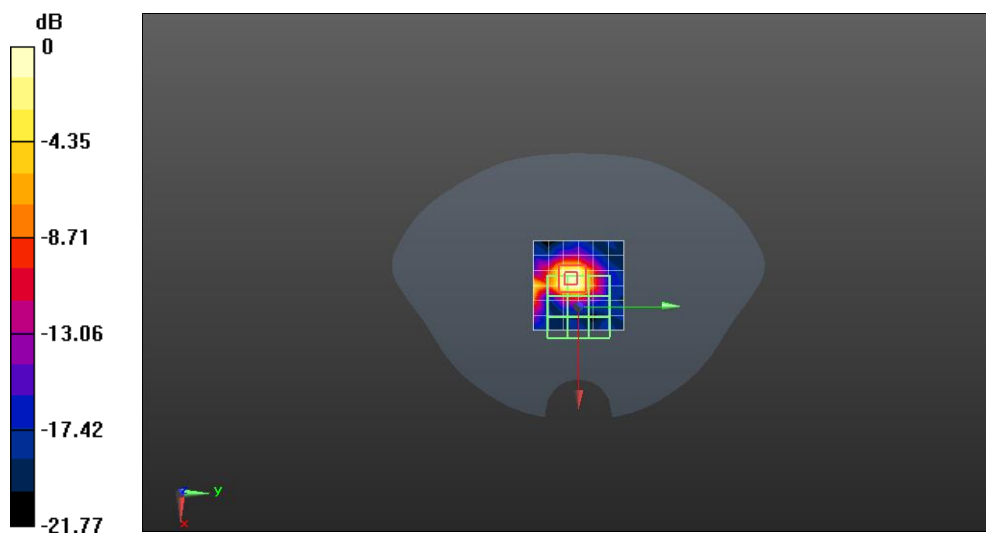
Configuration/Body/Zoom Scan (7x7x4)/Cube 0: Measurement grid: $dx=5$ mm, $dy=5$ mm, $dz=5$ mm

Reference Value = 9.464 V/m; Power Drift = 0.19 dB

Peak SAR (extrapolated) = 0.677 W/kg

SAR(1 g) = 0.130 W/kg; SAR(10 g) = 0.049 W/kg

Maximum value of SAR (measured) = 0.300 W/kg



0 dB = 0.140 W/kg = -8.54 dBW/kg

R ear BLE 1M 2440MHz_Back side 0mm

Communication System: UID 0, BT(0) (0); Communication System Band: BT; Frequency: 2440 MHz;

Medium parameters used: $f = 2440$ MHz; $\sigma = 1.82$ S/m; $\epsilon_r = 39.51$; $\rho = 1000$ kg/m³

Phantom section: Flat Section

DASY Configuration:

- Probe: EX3DV4 - SN7383; ConvF(7.65, 7.65, 7.65); Calibrated: 2022/1/12;
- Sensor-Surface: 1.4mm (Mechanical Surface Detection), $z = -19.0, 31.0$
- Electronics: DAE3 Sn427; Calibrated: 2022/4/12
- Phantom: SAM; Type: QD000P40CD; Serial: 1805
- DASY52 52.8.8(1222); SEMCAD X 14.6.10(7331)

Configuration/Body/Area Scan (7x7x1): Measurement grid: $dx=12$ mm, $dy=12$ mm

Maximum value of SAR (measured) = 0.229 W/kg

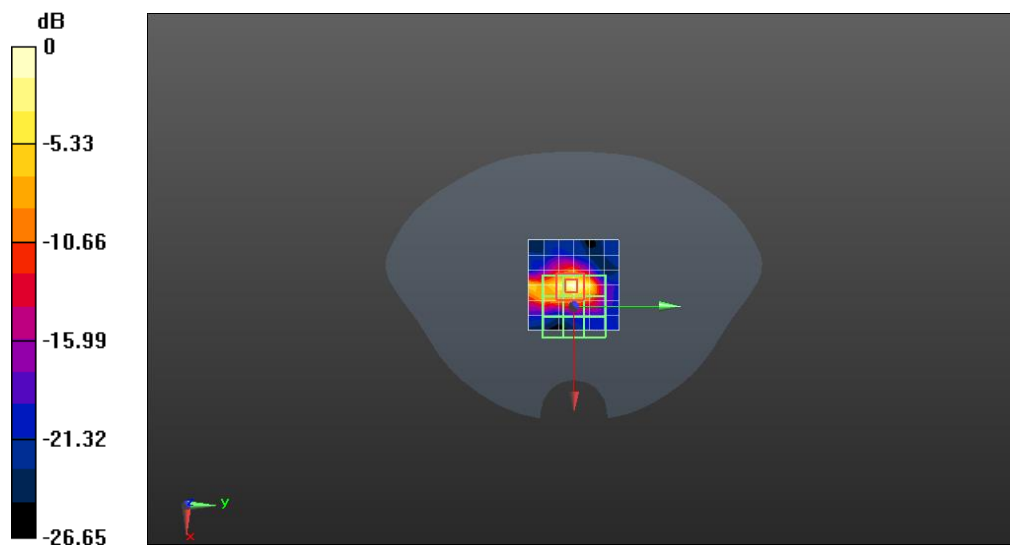
Configuration/Body/Zoom Scan (7x7x4)/Cube 0: Measurement grid: $dx=5$ mm, $dy=5$ mm, $dz=5$ mm

Reference Value = 11.77 V/m; Power Drift = -0.13 dB

Peak SAR (extrapolated) = 0.337 W/kg

SAR(1 g) = 0.093 W/kg; SAR(10 g) = 0.033 W/kg

Maximum value of SAR (measured) = 0.202 W/kg



0 dB = 0.229 W/kg = -6.40 dBW/kg