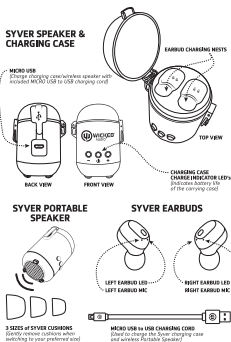
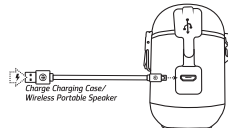



**SYVER**
**TRUE WIRELESS**


#### SPEAKER & CHARGING CASE

**CHARGING the CHARGING CASE and WIRELESS PORTABLE SPEAKER**  
To charge the Syver Charging Case and Bluetooth Portable Speaker, use the included Micro USB to USB charging cord. Connect the Micro USB (smaller side) into the Charging Case and connect USB side into computer or USB wall charger (not included).



**CHARGING the SYVER EARBUDS**  
Delicately place the Syver earbuds into the earbud charging nests. Make sure each earbud is placed in its corresponding nest. The cushions on the earbud will face down. A small magnetic pull will help the earbuds fall into the correct position. The Syver earbuds will show a red LED when charging. LEDs will turn off when Syver earbuds are fully charged.

The charging case will shut down automatically if the Syver earbuds both reach full charge or when both of the earbuds are removed from the charging case.

#### FIRST TIME USE for DUAL EARBUD MODE

- 1 Make sure the Syver earbuds are charged (Please refer to section "Charging the Syver Earbuds" on page 2) and Bluetooth device (phone, computer, tablet etc.) is turned on with the Bluetooth feature enabled (this is usually found in settings).
- 2 Remove charged earbuds from charging case. They will turn on and pair together automatically.
- 3 Both earbuds will pair together: both will beep and the left earbud will announce "Left" and then the right earbud will announce "Right", indicating they are now connected to each other.
- 4 The left earbud will then announce "Pairing" while its LED is flashing Red/Blue. This means your earbuds are now searching for your device to pair with.
- 5 The right earbud's LED will be off during the pairing process.
- 6 Your device will detect the Syver's pairing name "Wicked Syver BUDS". Select "Wicked Syver BUDS" on your device to start pairing to your device.
- 7 Once selected and paired, the left earbud will beep and announce "Pairing Successful". When paired successfully to your device, both earbuds' LEDs will be off.
- 8 You're ready to go!

2 Hold both center buttons for 3-5 seconds. (This is when the earbuds have shut down outside of the charging case.) (For pairing instructions, please see "First Time Use" on page 3.)

#### TURNING OFF EARBUDS

- 1 Place earbuds back into their charging case. They will automatically turn off.
  - OR
  - 2 Hold center button, on either right or left earbud, for a few seconds until the earbuds beep twice and the LEDs flash red and turn off.
- (Please note when using BOTH earbuds, you only need to hold down ONE center button in order to turn both earbuds off.)

#### DISCONNECTED

When out of range, or if your device becomes disconnected from the Syver earbuds, the left earbud will beep and announce "Disconnected" followed by "Pairing". The Syver earbuds will automatically go into pairing mode with the left earbud's LED flashing Red/Blue while the right earbud's LED will be off (if you are in dual earbud mode).

#### PAUSE/PLAY

When both earbuds are paired to your device you can pause and play your music by using a short press on the center button with either the left or right earbud. (Please note when using BOTH earbuds, you can perform this function using EITHER earbud.)

the instructions in the section "First Time Use-For Single Earbud Use" below.  
Please note that when pairing the RIGHT earbud to your device (using single earbud), you will notice that "Wicked Syver BUDS" shows up a second time in your pairing name options. Please pair with the newest "Wicked Syve BUDS" option as this will be directly connected to the RIGHT earbud.

#### FIRST TIME USE-For SINGLE EARBUD USE

- 1 Determine if you are using the left or the right earbud.
- 2 Make sure the Syver earbud is charged and your device is turned on with the Bluetooth feature enabled.
- 3 Turn on the Syver earbud by removing from the charging case or if it is out of the case and turned off you can turn on the earbud by holding down the center button for a couple seconds. The earbud LED will flash blue "beep". After a few seconds, once the earbud realizes it will not be pairing with the other earbud, the earbud will announce "Pairing" and the LED will then flash Red/Blue indicating it is in pairing mode.
- 4 Your phone or device will detect the Syver's pairing name "Wicked Syver BUDS". Select "Wicked Syver BUDS" on your device to start pairing them together.
- 5 Once selected and paired, the earbud will announce "Pairing Successful" indicating your device has successfully paired with the Syver. When paired successfully to your device, the earbud's LED will shut off.
- 6 You're ready to go!

Please note when using ONE earbud either earbud can perform all functions. (See previous sections)

#### FIRST TIME USE WIRELESS PORTABLE SPEAKER

- 1 Make sure the Syver Speaker is charged and your device

#### NEXT TRACK

Using the right earbud you are able to skip to the next track by using 2 short presses (double press) on the center button.

#### ANSWER/HANGUP

When both earbuds are connected, answer or hang up by using a short press on the center button on either the left or right earbud.

#### INCOMING CALL

When receiving an incoming call, the earbuds will detect the device's programmed ringtone (this may differ depending on your device)  
You can answer by using a short press on the center button on either the left or right earbud.

#### LOW BATTERY

When using BOTH earbuds together, the left earbud acts as the communicator to your Bluetooth device. Because of this, the left earbud will likely drain its battery quicker than the right.  
Please consider charging your Syver earbuds regularly when not in use to retain ample battery life in both earbuds.  
If you lose battery life in the left earbud while using both earbuds, the left earbud will announce "Low Charge". After a couple minutes the earbud will repeat the announcement and then shut off. At this point you can shut off the right earbud and charge both earbuds, or choose to use the right earbud for an additional time in single earbud mode.  
The right earbud will take over as the communicator with your device once the left earbud runs out of battery. The LED will flash Red/Blue, indicating it is in pairing mode. Please follow

- 1 is turned on with the Bluetooth feature enabled.
- 2 Turn on the Syver Speaker by pressing the Center "Power Button" (short press). The speaker will beep and announce "Pairing" while the LEDs flash blue.
- 3 Your phone or device will detect the Syver's pairing name "Wicked Syver SPKR". Select "Wicked Syver SPKR" on your device to start pairing them together.
- 4 Once selected and paired the Speaker will announce "Pairing Successful" indicating your device has successfully paired with the Syver. When paired successfully to your device, the LEDs on the speaker will be a solid blue.

#### DISCONNECTED

When out of range, or if your device becomes disconnected from the Syver speaker, the speaker will announce "Disconnected" followed by "Pairing". The Syver Speaker will automatically go into pairing mode with the LEDs flashing Blue.

#### PAUSE/PLAY

You can pause and play your music by using a short press on the center

#### PREVIOUS/NEXT TRACK

You are able to play the previous track or skip to the next track by using a short press on either the +/- buttons.

#### VOLUME CONTROL

You are able to control the volume of your music by using a long press on either the +/- buttons.

#### TURNING OFF SYVER SPEAKER

To turn off your Syver Speaker simply hold down the center button for a few seconds until you hear the "beep".

**IMPORTANT SAFETY INSTRUCTION**  
Please read carefully.  
1. Read the instructions.  
2. Do not use the product near water.  
3. Do not use the product near fire or heat.  
4. Do not use the product near children.  
5. Do not use the product near pets.  
6. Do not use the product near electrical equipment.  
7. Do not use the product near flammable materials.  
8. Do not use the product near open flames.  
9. Do not use the product near high voltage.  
10. Do not use the product near power lines.  
11. Do not use the product near radio equipment.  
12. Do not use the product near medical equipment.  
13. Do not use the product near aircraft.  
14. Do not use the product near ships.  
15. Do not use the product near trains.  
16. Do not use the product near cars.  
17. Do not use the product near motorcycles.  
18. Do not use the product near bicycles.  
19. Do not use the product near scooters.  
20. Do not use the product near skateboards.  
21. Do not use the product near roller skis.  
22. Do not use the product near snowboards.  
23. Do not use the product near surfboards.  
24. Do not use the product near kayaks.  
25. Do not use the product near canoes.  
26. Do not use the product near rowing boats.  
27. Do not use the product near sailboats.  
28. Do not use the product near motorboats.  
29. Do not use the product near jet skis.  
30. Do not use the product near water skis.  
31. Do not use the product near wakeboards.  
32. Do not use the product near bodyboards.  
33. Do not use the product near inflatable toys.  
34. Do not use the product near beach toys.  
35. Do not use the product near pool toys.  
36. Do not use the product near garden toys.  
37. Do not use the product near lawn toys.  
38. Do not use the product near yard toys.  
39. Do not use the product near playground toys.  
40. Do not use the product near sports equipment.  
41. Do not use the product near tools.  
42. Do not use the product near machinery.  
43. Do not use the product near power tools.  
44. Do not use the product near construction equipment.  
45. Do not use the product near farm equipment.  
46. Do not use the product near industrial equipment.  
47. Do not use the product near military equipment.  
48. Do not use the product near law enforcement equipment.  
49. Do not use the product near government equipment.  
50. Do not use the product near religious equipment.  
51. Do not use the product near educational equipment.  
52. Do not use the product near medical equipment.  
53. Do not use the product near scientific equipment.  
54. Do not use the product near research equipment.  
55. Do not use the product near laboratory equipment.  
56. Do not use the product near hospital equipment.  
57. Do not use the product near clinic equipment.  
58. Do not use the product near pharmacy equipment.  
59. Do not use the product near grocery store equipment.  
60. Do not use the product near retail equipment.  
61. Do not use the product near warehouse equipment.  
62. Do not use the product near distribution equipment.  
63. Do not use the product near shipping equipment.  
64. Do not use the product near handling equipment.  
65. Do not use the product near storage equipment.  
66. Do not use the product near display equipment.  
67. Do not use the product near sales equipment.  
68. Do not use the product near service equipment.  
69. Do not use the product near support equipment.  
70. Do not use the product near maintenance equipment.  
71. Do not use the product near repair equipment.  
72. Do not use the product near replacement equipment.  
73. Do not use the product near upgrade equipment.  
74. Do not use the product near accessory equipment.  
75. Do not use the product near optional equipment.  
76. Do not use the product near add-on equipment.  
77. Do not use the product near expansion equipment.  
78. Do not use the product near upgrade kit equipment.  
79. Do not use the product near replacement kit equipment.  
80. Do not use the product near accessory kit equipment.  
81. Do not use the product near optional kit equipment.  
82. Do not use the product near add-on kit equipment.  
83. Do not use the product near expansion kit equipment.  
84. Do not use the product near upgrade kit equipment.  
85. Do not use the product near replacement kit equipment.  
86. Do not use the product near accessory kit equipment.  
87. Do not use the product near optional kit equipment.  
88. Do not use the product near add-on kit equipment.  
89. Do not use the product near expansion kit equipment.  
90. Do not use the product near upgrade kit equipment.  
91. Do not use the product near replacement kit equipment.  
92. Do not use the product near accessory kit equipment.  
93. Do not use the product near optional kit equipment.  
94. Do not use the product near add-on kit equipment.  
95. Do not use the product near expansion kit equipment.  
96. Do not use the product near upgrade kit equipment.  
97. Do not use the product near replacement kit equipment.  
98. Do not use the product near accessory kit equipment.  
99. Do not use the product near optional kit equipment.  
100. Do not use the product near add-on kit equipment.

**WARRANTY**  
Warranty period: 1 year.  
Warranty start date: Date of purchase.  
Warranty end date: 1 year after purchase.  
Warranty coverage: Defects in materials and workmanship.  
Warranty exclusions: Accidents, misuse, unauthorized repairs, etc.  
Warranty claims: Contact the manufacturer or retailer.

**DISCLAIMER**  
The manufacturer is not responsible for any damage or injury caused by the use of the product. The user assumes all responsibility for the safe and proper use of the product. The manufacturer is not responsible for any loss of data or other damage caused by the use of the product. The user assumes all responsibility for the safe and proper use of the product. The manufacturer is not responsible for any loss of data or other damage caused by the use of the product. The user assumes all responsibility for the safe and proper use of the product.

**REGULATORY INFORMATION**  
FCC Part 15.247, Class 1.  
CE Marking: CE.  
RoHS Compliant: Yes.  
REACH Compliant: Yes.

### **FCC Statement**

This equipment has been tested and found to comply with the limits for a Class B digital device, pursuant to part 15 of the FCC rules. These limits are designed to provide reasonable protection against harmful interference in a residential installation. This equipment generates, uses and can radiate radio frequency energy and, if not installed and used in accordance with the instructions, may cause harmful interference to radio communications. However, there is no guarantee that interference will not occur in a particular installation. If this equipment does cause harmful interference to radio or television reception, which can be determined by turning the equipment off and on, the user is encouraged to try to correct the interference by one or more of the following measures:

- Reorient or relocate the receiving antenna.
- Increase the separation between the equipment and receiver.
- Connect the equipment into an outlet on a circuit different from that to which the receiver is connected.
- Consult the dealer or an experienced radio/TV technician for help.

To assure continued compliance, any changes or modifications not expressly approved by the party.

Responsible for compliance could void the user's authority to operate this equipment. (Example- use only shielded interface cables when connecting to computer or peripheral devices).

This equipment complies with Part 15 of the FCC Rules. Operation is subject to the following two conditions:

- (1) This device may not cause harmful interference, and
- (2) This device must accept any interference received, including interference that may cause undesired operation.

RF warning statement:

The device has been evaluated to meet general RF exposure requirement.  
The device can be used in portable exposure condition without restriction.

Any Changes or modifications not expressly approved by the party responsible for compliance could void the user's authority to operate the equipment.