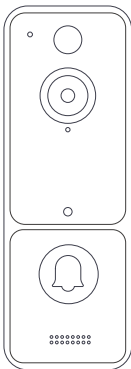


N8 Video Doorbell

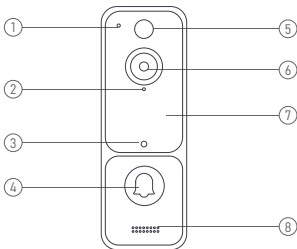


Scan the code
to view the user manual



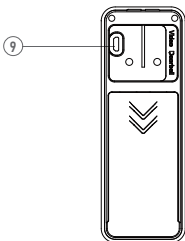
User Manual 1.0

Features



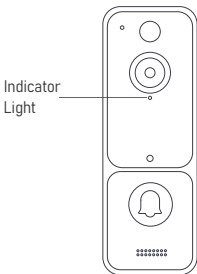
- 1. Microphone
- 2. Indicator Light
- 3. Light Sensor
- 4. Doorbell Button

- 5. Motion Sensor
- 6. Wide-angle Lens
- 7. Infrared Lights
- 8. Speaker



- 9. Micro USB Port (for Battery Charging)

Indicator light



Flashing RED

The device is disconnected from Wi-Fi. It will attempt to reconnect automatically. If it fails, please reset the device and pair it again in the app.

Flashing RED and BLUE Alternately

Low battery. Please recharge the device.

Flashing BLUE

The device is recording.

Solid RED

The device is charging.

RED Light Turns OFF

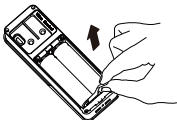
When the device is fully charged.

Recharge your batteries

1. Remove the mounting bracket

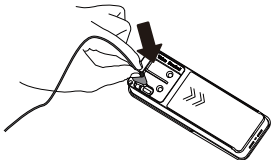
Place your thumbs on the sides of the doorbell. Use your thumbs as levers and pull away from the mounting bracket.

2. Remove the battery tab



3. Recharge Your Doorbell Before First Use

Use the provided micro-USB cable to charge your doorbell. It takes approximately 10 hours to fully charge, depending on the power source. Please note that you should use a power source of at least 5V1A.



A solid RED light indicates that the doorbell is charging. When the doorbell is fully charged, the RED light will turn off.

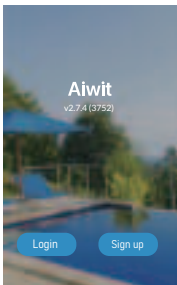
Create an account in the Aiwit app

1. Scan the QR code provided or search for Aiwit in the Apple App Store or Google Play. Then download and install the app.

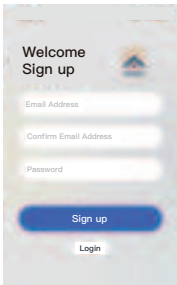


Android/iOS
App Download

2. Open the Aiwit app on your cellphone and tap Sign up.



3. Enter your email address, set a password, and tap Sign up.

A screenshot of a mobile app's sign-up screen. At the top, it says "Welcome Sign up" in bold black text. To the right is a small house icon. Below the text are three white input fields with labels "Email Address", "Confirm Email Address", and "Password". At the bottom, there is a large blue rounded button labeled "Sign up" and a smaller white rounded button labeled "Login".

Welcome Sign up

Email Address

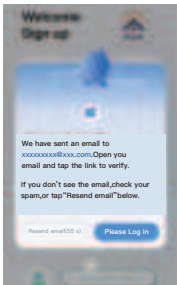
Confirm Email Address

Password

Sign up

Login

4. After activating your account with the email link, log in to the app using your email and password.

A screenshot of a mobile app's email verification screen. At the top, it says "Welcome Sign up" in bold black text. To the right is a small house icon. Below the text is a large blue rounded rectangle containing a white envelope icon. Below this is a light blue box with the text: "We have sent an email to xxxxxxxx@xxx.com. Open your email and tap the link to verify." Below that is another line of text: "If you don't see the email, check your spam, or tap 'Resend email' below." At the bottom, there is a white rounded button labeled "Resend email(55 s)" and a blue rounded button labeled "Please Log In".

Welcome Sign up

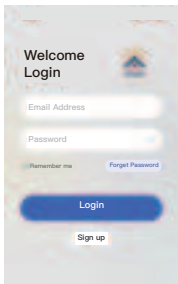
We have sent an email to xxxxxxxx@xxx.com. Open your email and tap the link to verify.

If you don't see the email, check your spam, or tap "Resend email" below.

Resend email(55 s)

Please Log In

5. Re-open the Aiwit app, enter your email address and password, and tap Log in.



Set up your doorbell in the Aiwit app

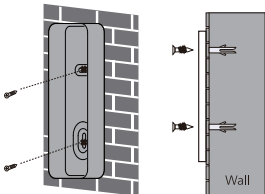
1. Before setting up the camera, ensure your cellphone's Bluetooth (📶) is turned on.
2. Open the Aiwit app and sign in to your account.
3. To add your camera, tap the Add device icon (+).
4. Choose Video Doorbell and then select your model.
5. Press and hold the doorbell button until the red light starts flashing. You will hear Entering pairing mode.

6. The device supports only the 2.4GHz Wi-Fi network. Navigate to your cellphone's Wi-Fi settings, connect to a 2.4GHz Wi-Fi network, and tap "Yes." (Note: 5GHz Wi-Fi is not supported).
7. For Connection Setup: Select your 2.4GHz Wi-Fi network name, input the password, and tap Next.
8. Tap Confirm.
9. Use the device's camera to scan the QR code on your phone.
10. Once you hear Device registration successful, you are all set.

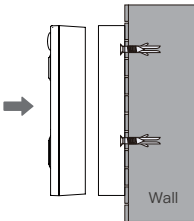
Install your doorbell

1. Prepare for mounting

Mark the drill holes and use a bit to drill into your wall. Insert the anchors and secure your backplate with the provided mounting screws.



2. Reattach the doorbell to the backplate.



Set up your wireless chime

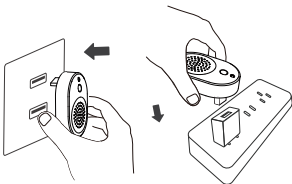
Connect the doorbell camera to the wireless chime and receive an instant alert in your home when someone rings the doorbell. The chime plugs into any USB port, allowing you to place it anywhere in your home.

Wireless Chime



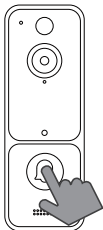
1. Plug the chime into a USB port and press the pairing button

Before beginning the setup process, ensure that your video doorbell is connected to your phone. Then, plug the chime into a USB port and press the pairing button.



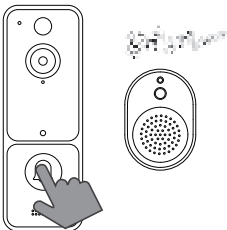
2. Set up your wireless chime

Press the doorbell button to pair it with the chime.



3. Press the doorbell button



Press the doorbell button again to verify that the chime and doorbell are working properly.




Please note that the volume of the chime is not adjustable.

Frequently asked questions

1. How can I share the device with family members?

Open the Aiwit app and tap on Settings  . From there, you can share  the device via QR code or email, and even transfer ownership of the device. The new user must first download the Aiwit app and create their own account.

2. Why can't I change the settings?

Only the owner account  can change settings, delete videos, and share the device. Shared accounts do not have these options.

3. How many users can view the device at the same time?

The owner account can share the device with up to 8 other accounts. Up to 3 users may view the video feed at once, but only 1 user can use the intercom.

4. Is the 5GHz Wi-Fi supported?

No, the camera only works with 2.4GHz Wi-Fi. Please separate two Wi-Fi bands by giving the 2.4 GHz and 5 GHz networks each a unique separate SSID (network name). Then connect your device to the 2.4GHz Wi-Fi.

5. Why is my Wi-Fi signal weak?

Your camera may be too far from your wireless router, or there may be obstructions reducing signal strength. You might want to reposition your router or get a signal extender/repeater.

6. Why is the camera offline?

The camera being offline means it is disconnected. There could be a few reasons for this:

- 1) If the camera has run out of power, you will need to recharge it.
- 2) The Wi-Fi signal is weak, causing disconnection. Please improve your Wi-Fi signal and reconnect the device.
- 3) If the Wi-Fi is unstable, the device might go offline or get delayed frequently. You can try restarting the router and reconnecting the Wi-Fi to see if it helps. A good Wi-Fi connection is essential since the device is outside the house.

7. How can I adjust the human detection accuracy?

Open the Aiwit app and tap on Settings. Next, tap on Motion Settings. Here, you can select the desired human detection accuracy from three options: low, medium, and high. We recommend choosing medium. The high setting provides the strictest detection level, meaning the device will be triggered only when it is entirely certain that the moving object is a human. However, this stringent setting might cause the device to overlook a human figure, resulting in a missed notification.

High Accuracy - The device will record videos less frequently, ensuring maximum battery life.

Medium Accuracy - Medium battery life.

Low Accuracy - The device will record videos more frequently, leading to the shortest battery life.

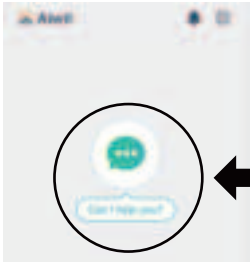
If the areas you're monitoring experience excessive or repetitive motions, like children playing in the yard, you may receive numerous alerts, which can rapidly deplete the battery of devices. The human detection accuracy settings are designed to help you receive the notifications you want while preserving battery life.

8. How can I enable notifications on my phone?

- 1) Open the Aiwit app. From the Device page, tap the Settings icon, then tap the Motion Detection icon. Here, you can choose whether to turn Motion Alerts on or off.
- 2) Open your phone's settings. Navigate to "App Management" and "Notification Settings," then locate the Aiwit app. Ensure all permissions and notifications are enabled for the Aiwit app.

Contact us

If you require further assistance, feel free to reach out to our support team. Email us at service@aiwit.cc or use the Aiwit app's support feature. Please include your product's model and the retailer's name. Thank you.



FCC Warning:

This equipment has been tested and found to comply with the limits for a Class B digital device, pursuant to part 15 of the FCC Rules. These limits are designed to provide reasonable protection against harmful interference in a residential installation. This equipment generates, uses and can radiate radio frequency energy and, if not installed and used in accordance with the instructions, may cause harmful interference to radio communications. However, there is no guarantee that interference will not occur in a particular installation. If this equipment does cause harmful interference to radio or television reception, which can be determined by turning the equipment off and on, the user is encouraged to try to correct the interference by one or more of the following measures:

- Reorient or relocate the receiving antenna.
- Increase the separation between the equipment and receiver.
- Connect the equipment into an outlet on a circuit different from that to which the receiver is connected.
- Consult the dealer or an experienced radio/TV technician for help.

Caution: Any changes or modifications to this device not explicitly approved by manufacturer could void your authority to operate this equipment.

This device complies with part 15 of the FCC Rules. Operation is subject to the following two conditions:

(1) This device may not cause harmful interference, and (2) this device must accept any interference received, including interference that may cause undesired operation.

This equipment complies with FCC radiation exposure limits set forth for an uncontrolled environment. This equipment should be installed and operated with minimum distance 20cm between the radiator and your body.