



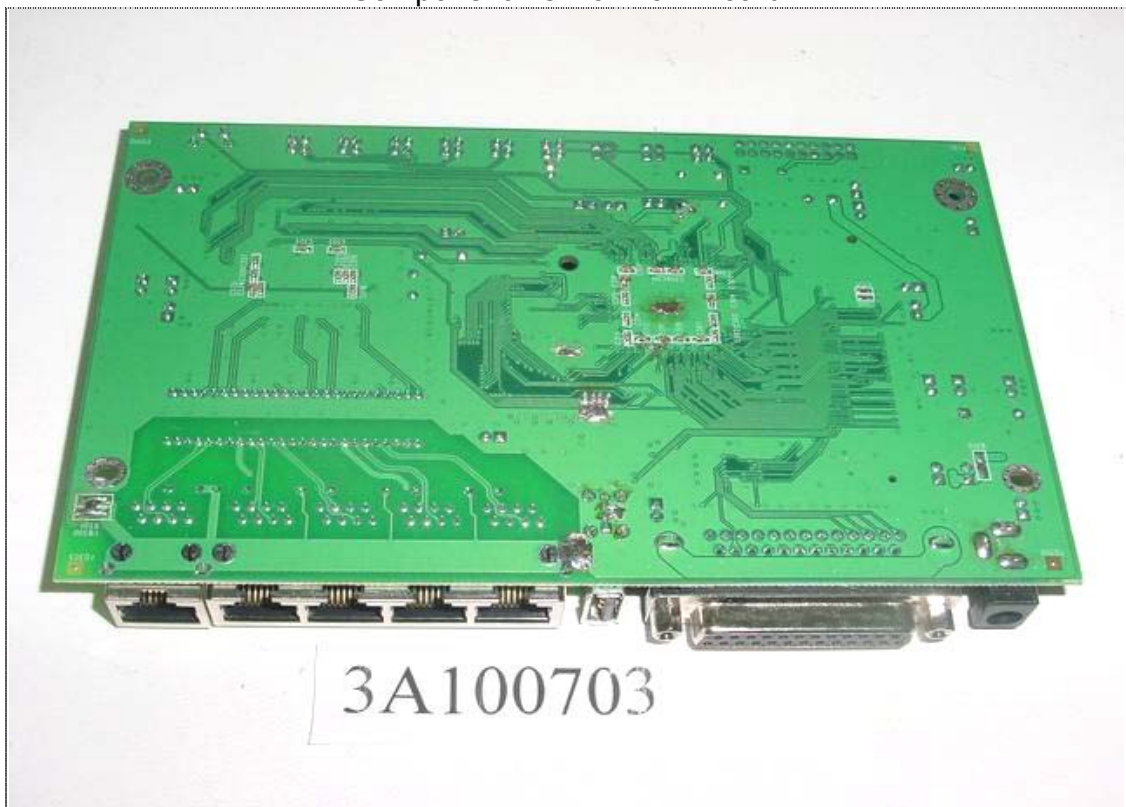
I/O Port of EUT



Inside view of EUT



Component view of Main Board



Solder view of Main Board



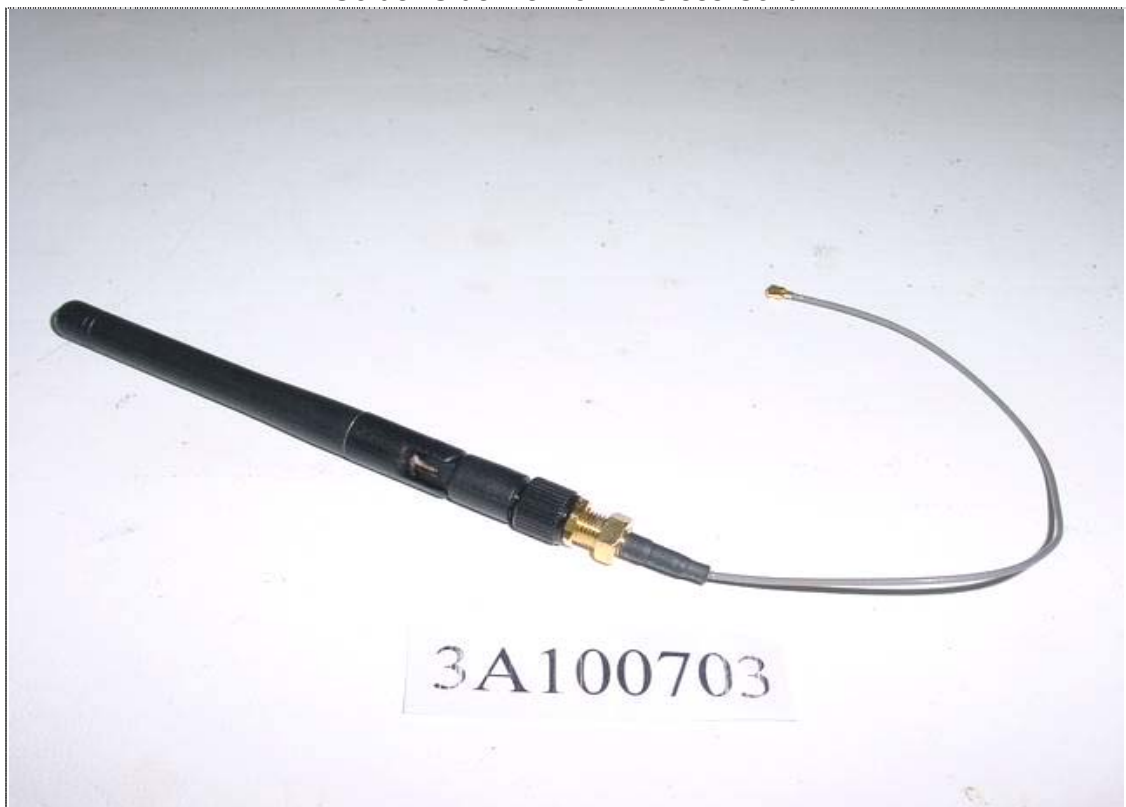
Component Side view of Wireless Card



Component Side view of Wireless Card



Solder Side view of Wireless Card



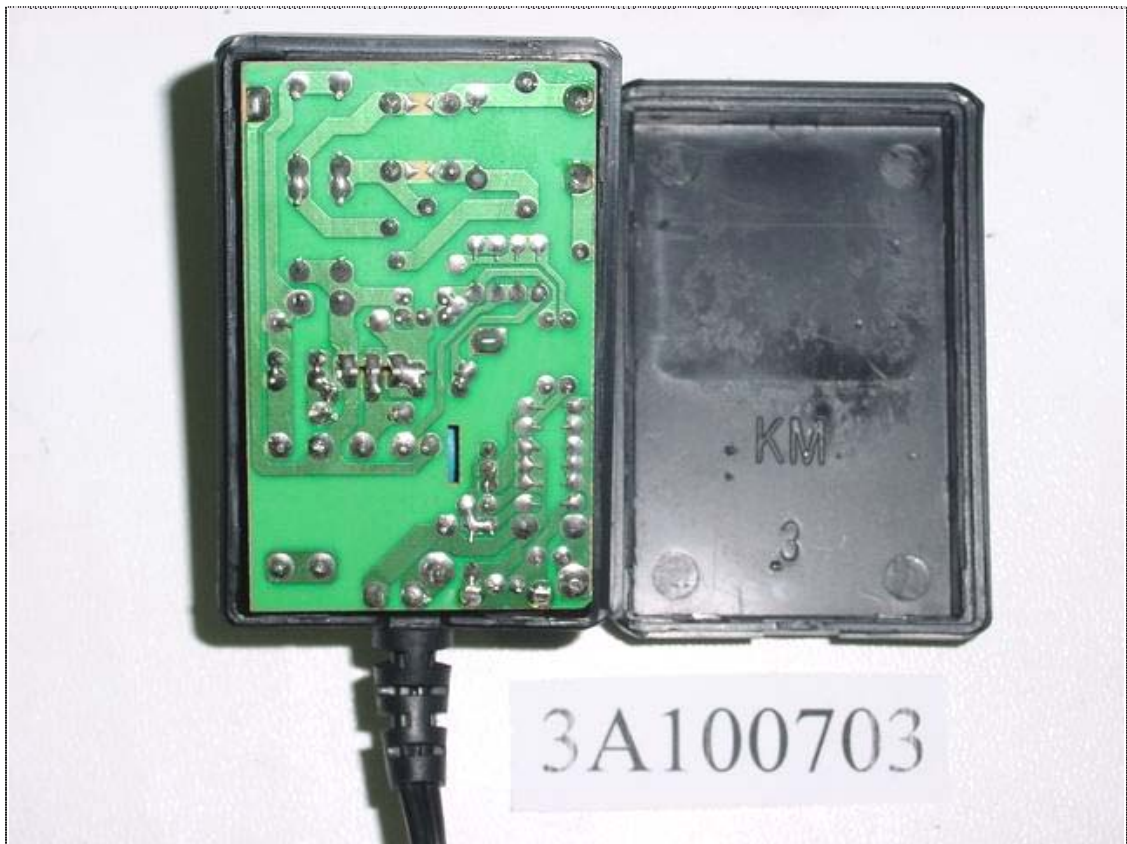
Antenna



Front View of Power Adapter



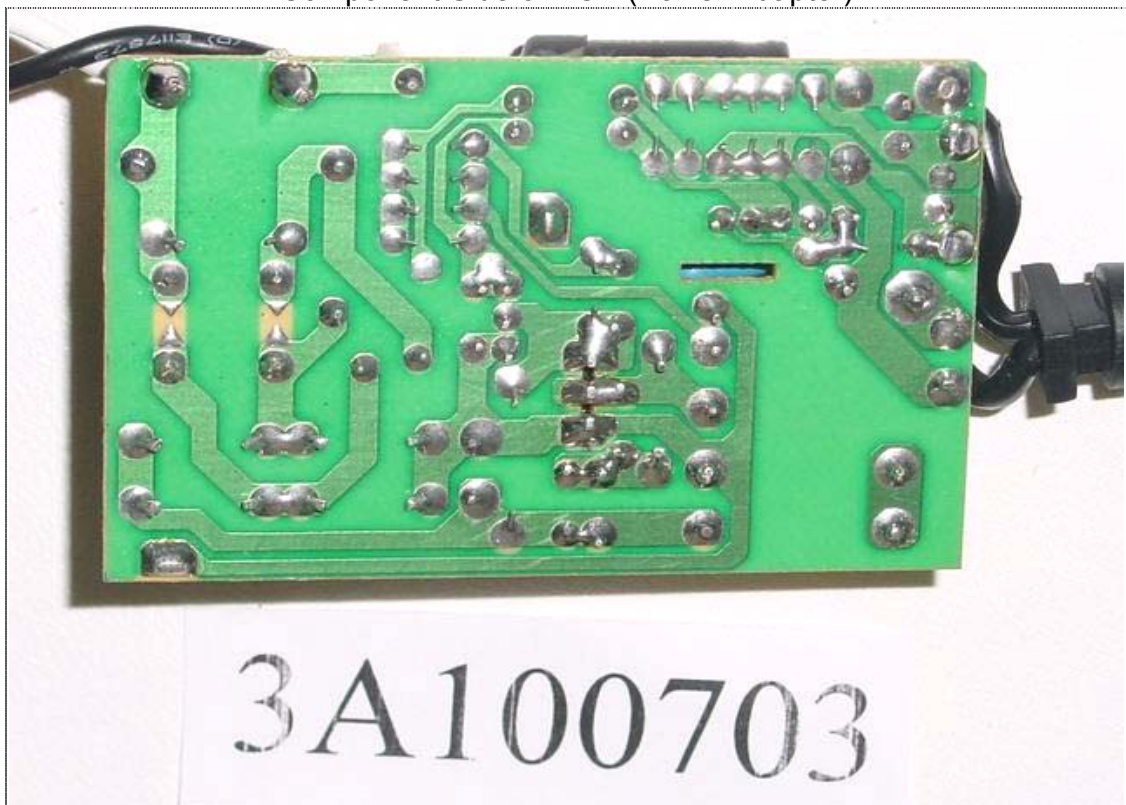
Rear View of Power Adapter



Inside View of Power Adapter



Component Side of PCB (Power Adapter)



Solder Side of PCB (Power Adapter)