

B Simulated Power Density Distributions

NOTE: Antenna configuration is noted as a sector

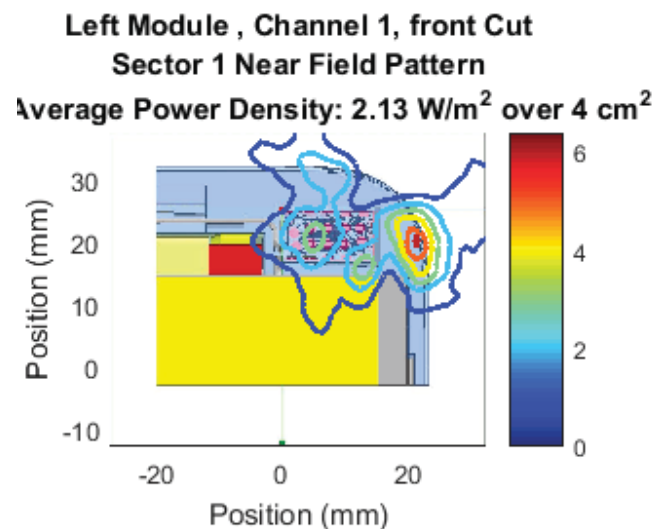
This appendix shows the point power density distribution over the defined area for all antenna configurations at the worst exposure plane.

- Right array – The worst-case exposure plane is the front of the device.
- Left array – The worst-case exposure plane is the rear of device.

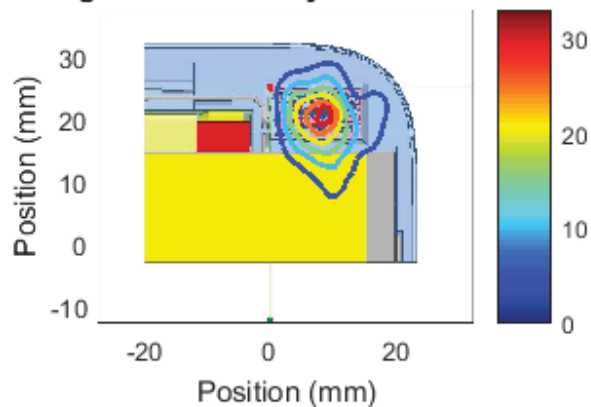
All plots showed the point power density averaged over a 4 cm² area at a distance of 10 mm from the device surface.

See [Figure C-3](#) for the orientation of all the power distributions relative to the EUT.

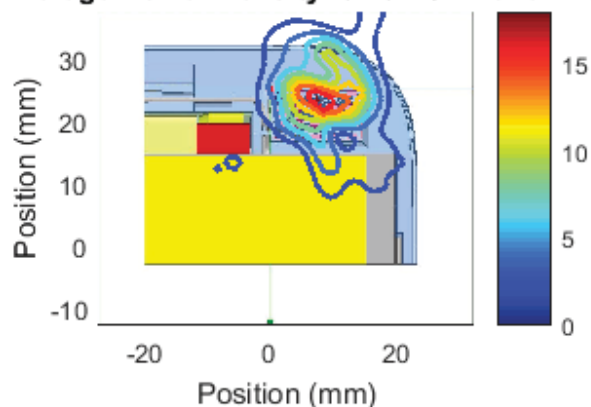
B.1 Left module Cut1 “Front of Device”



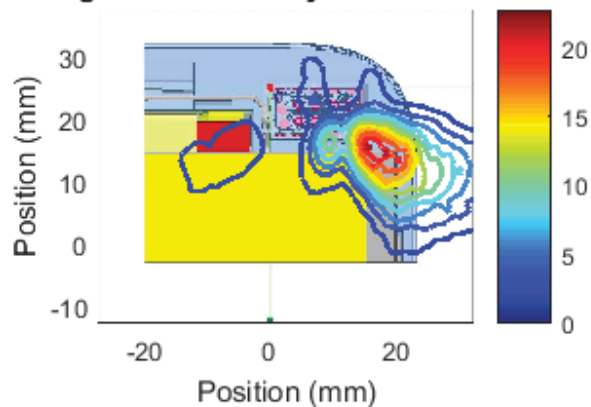
Left Module , Channel 1, front Cut
Sector 2 Near Field Pattern
Average Power Density: 8.79 W/m² over 4 cm²



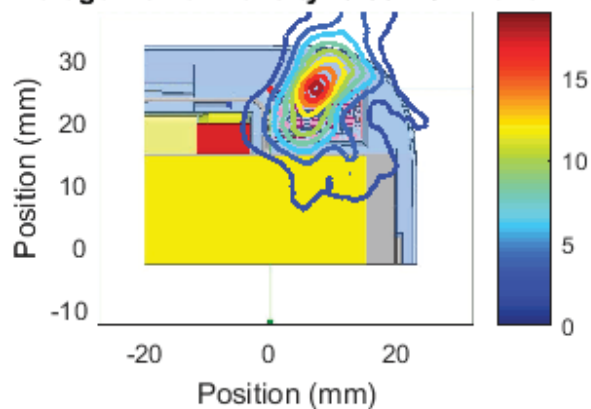
Left Module , Channel 1, front Cut
Sector 3 Near Field Pattern
Average Power Density: 6.16 W/m² over 4 cm²



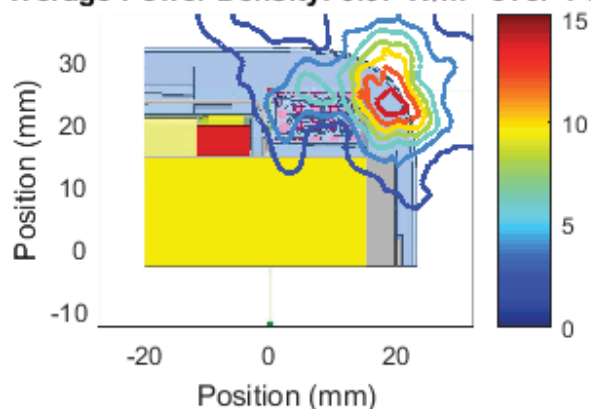
Left Module , Channel 1, front Cut
Sector 4 Near Field Pattern
Average Power Density: 8.41 W/m² over 4 cm²



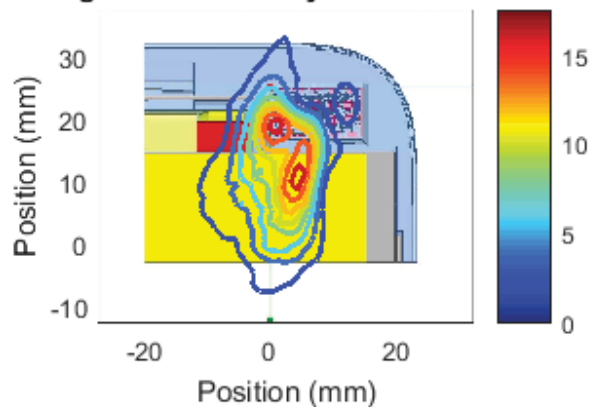
Left Module , Channel 1, front Cut
Sector 5 Near Field Pattern
Average Power Density: 6.38 W/m² over 4 cm²



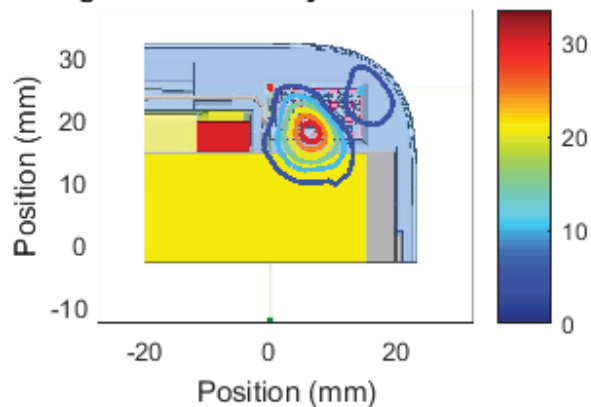
Left Module , Channel 1, front Cut
Sector 6 Near Field Pattern
Average Power Density: 6.97 W/m² over 4 cm²



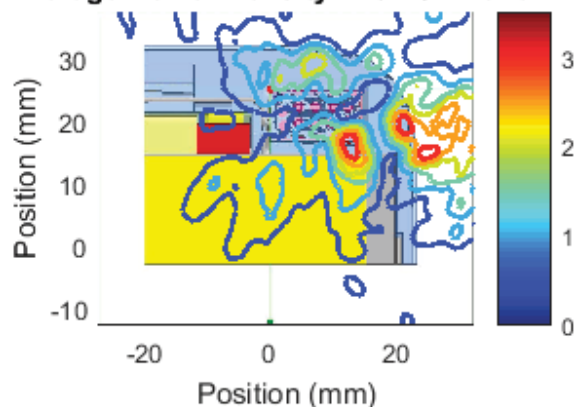
Left Module , Channel 1, front Cut
Sector 7 Near Field Pattern
Average Power Density: 7.22 W/m² over 4 cm²



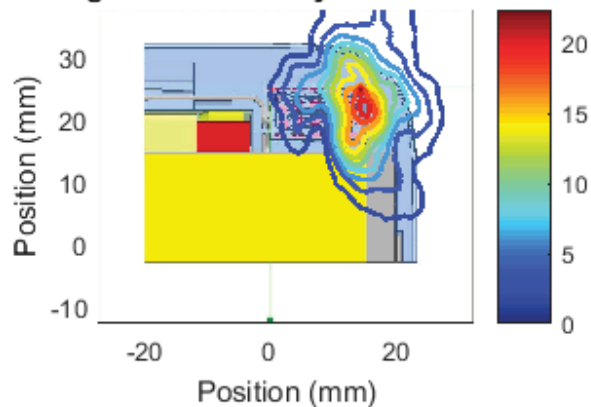
Left Module , Channel 1, front Cut
Sector 8 Near Field Pattern
Average Power Density: 7.78 W/m² over 4 cm²



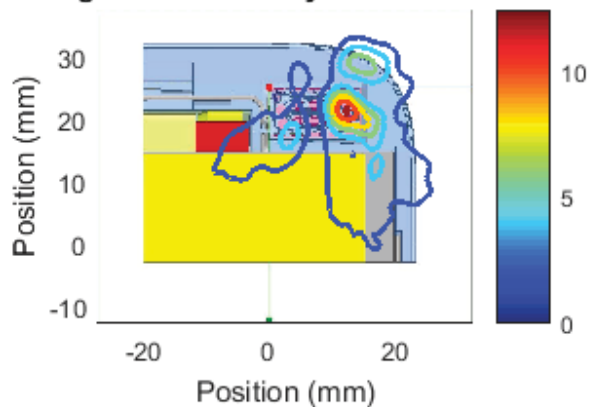
Left Module , Channel 1, front Cut
Sector 9 Near Field Pattern
Average Power Density: 1.6 W/m² over 4 cm²



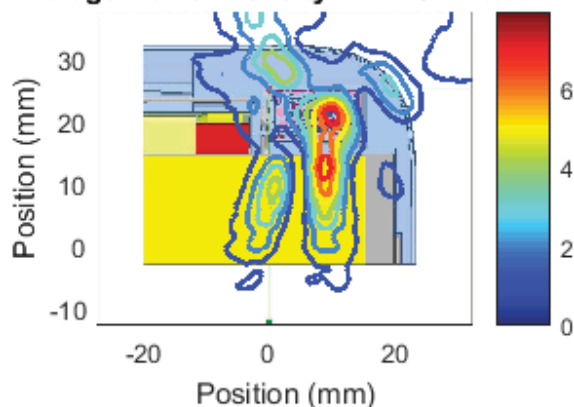
Left Module , Channel 1, front Cut
Sector 10 Near Field Pattern
Average Power Density: 8.1 W/m² over 4 cm²



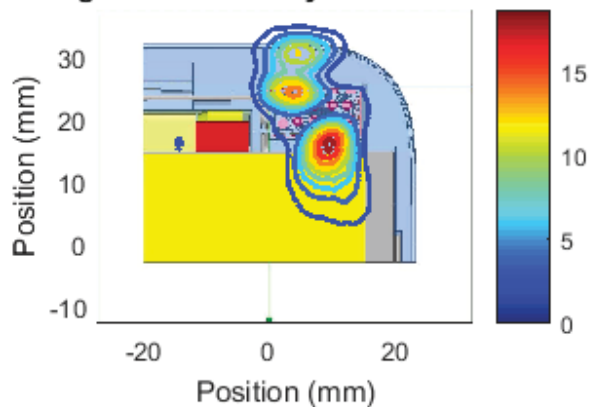
Left Module , Channel 1, front Cut
Sector 11 Near Field Pattern
Average Power Density: 3.33 W/m² over 4 cm²



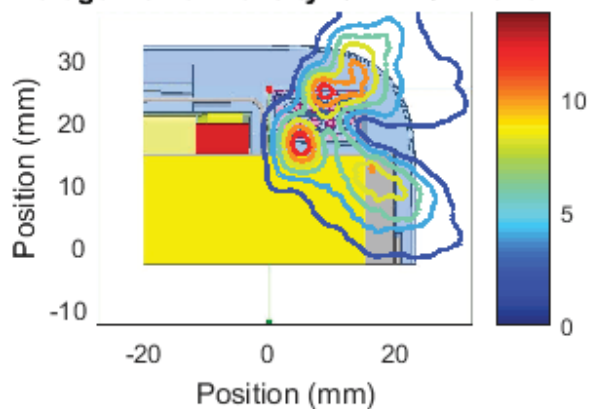
Left Module , Channel 1, front Cut
Sector 12 Near Field Pattern
Average Power Density: 2.7 W/m² over 4 cm²



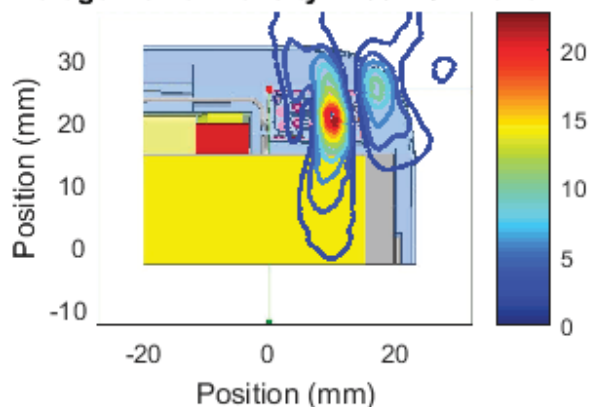
Left Module , Channel 1, front Cut
Sector 13 Near Field Pattern
Average Power Density: 5.28 W/m² over 4 cm²



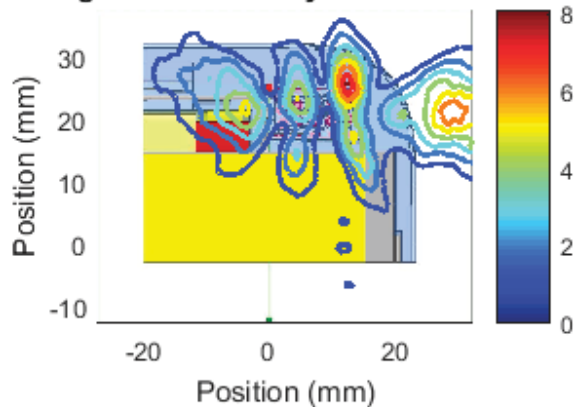
Left Module , Channel 1, front Cut
Sector 14 Near Field Pattern
Average Power Density: 6.27 W/m² over 4 cm²



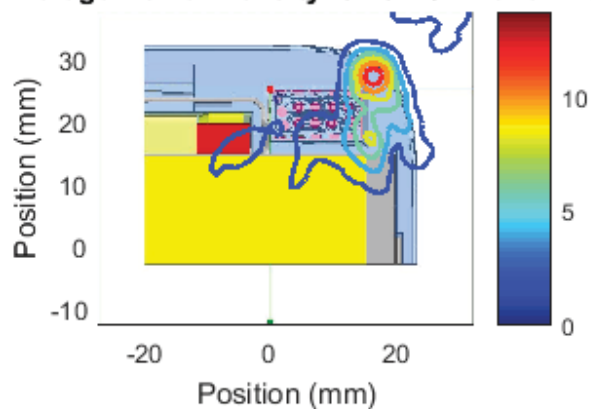
Left Module , Channel 1, front Cut
Sector 15 Near Field Pattern
Average Power Density: 4.99 W/m² over 4 cm²



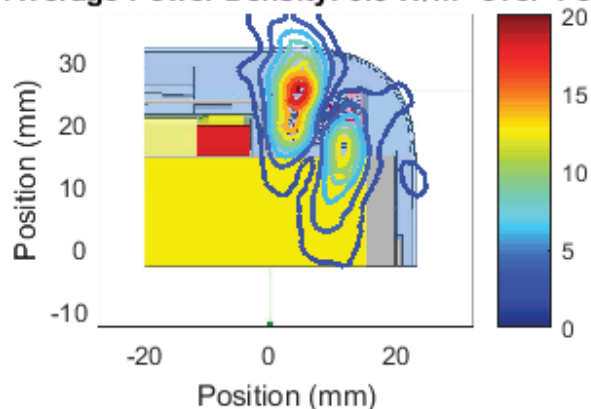
Left Module , Channel 1, front Cut
Sector 16 Near Field Pattern
Average Power Density: 2.76 W/m² over 4 cm²



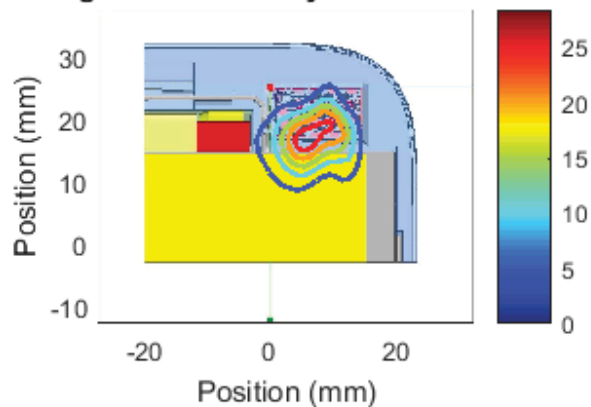
Left Module , Channel 1, front Cut
Sector 17 Near Field Pattern
Average Power Density: 3.78 W/m² over 4 cm²



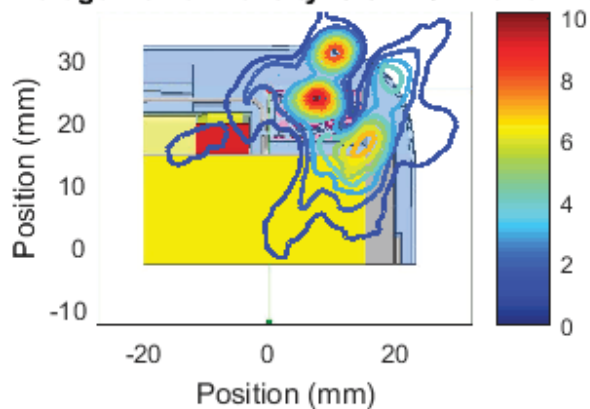
Left Module , Channel 1, front Cut
Sector 18 Near Field Pattern
Average Power Density: 6.3 W/m² over 4 cm²



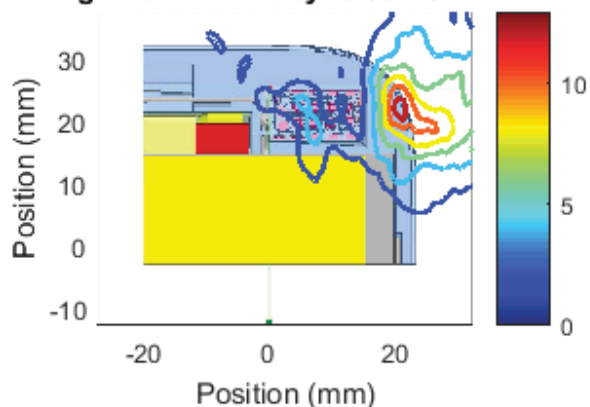
Left Module , Channel 1, front Cut
Sector 19 Near Field Pattern
Average Power Density: 7.83 W/m² over 4 cm²



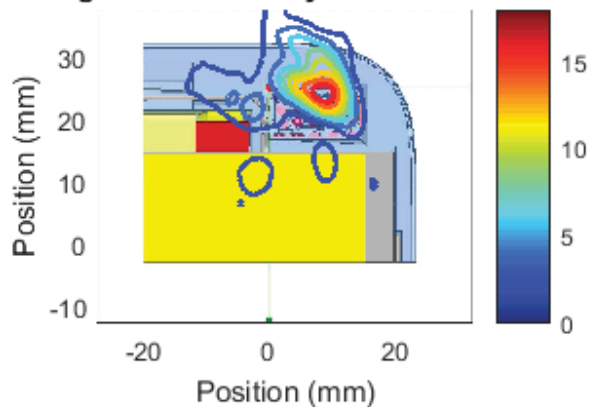
Left Module , Channel 1, front Cut
Sector 20 Near Field Pattern
Average Power Density: 3.54 W/m² over 4 cm²



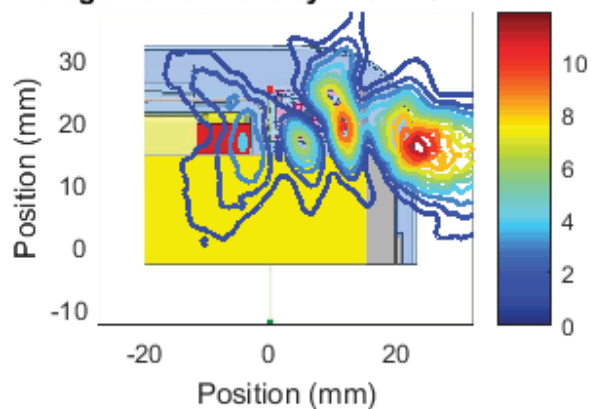
Left Module , Channel 1, front Cut
Sector 21 Near Field Pattern
Average Power Density: 5.69 W/m² over 4 cm²



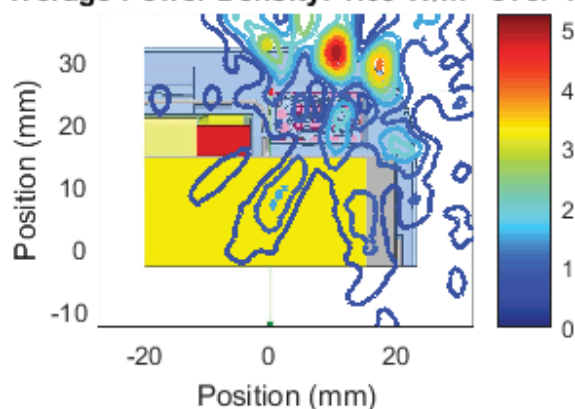
Left Module , Channel 1, front Cut
Sector 22 Near Field Pattern
Average Power Density: 4.59 W/m² over 4 cm²



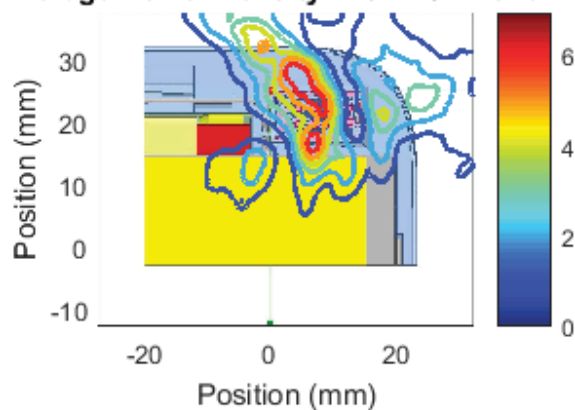
Left Module , Channel 1, front Cut
Sector 23 Near Field Pattern
Average Power Density: 4.57 W/m² over 4 cm²



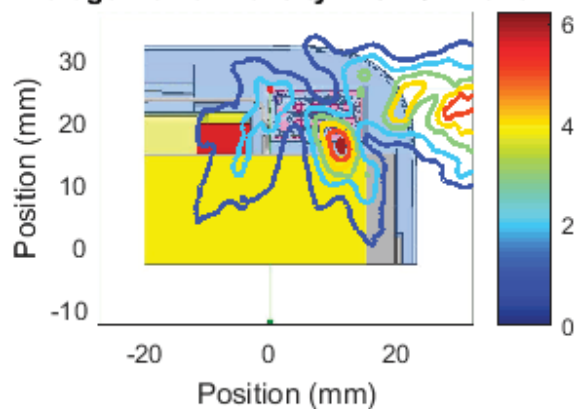
Left Module , Channel 1, front Cut
Sector 24 Near Field Pattern
Average Power Density: 1.63 W/m² over 4 cm²



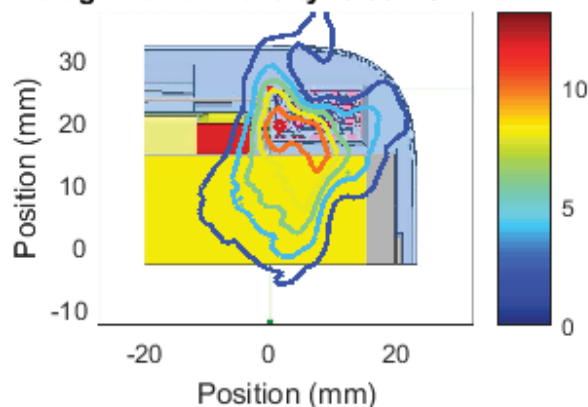
Left Module , Channel 1, front Cut
Sector 25 Near Field Pattern
Average Power Density: 2.91 W/m² over 4 cm²



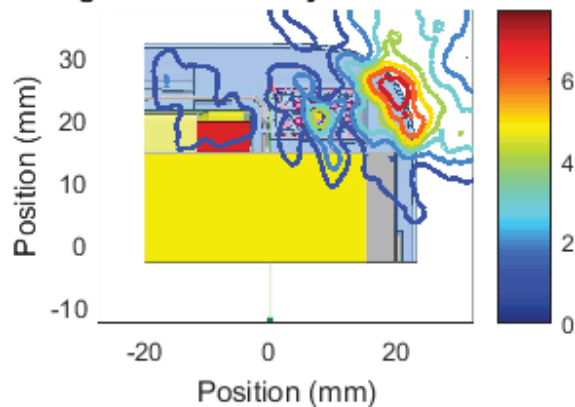
Left Module , Channel 1, front Cut
Sector 26 Near Field Pattern
Average Power Density: 2.5 W/m² over 4 cm²



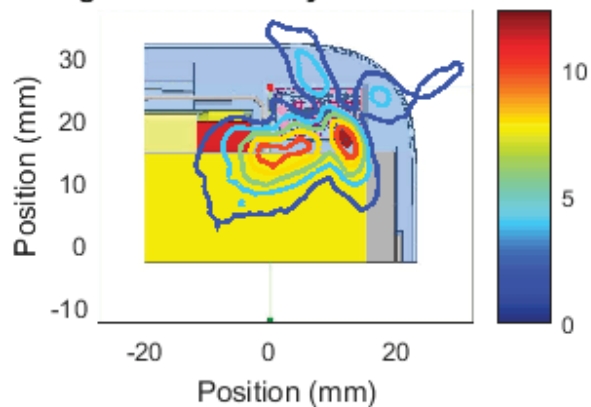
Left Module , Channel 1, front Cut
Sector 27 Near Field Pattern
Average Power Density: 6.53 W/m² over 4 cm²



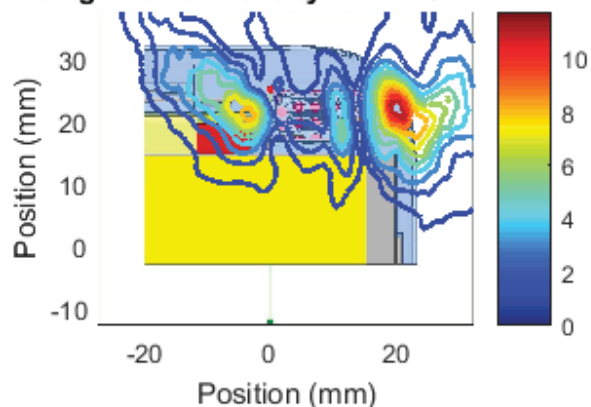
Left Module , Channel 1, front Cut
Sector 28 Near Field Pattern
Average Power Density: 3.62 W/m² over 4 cm²



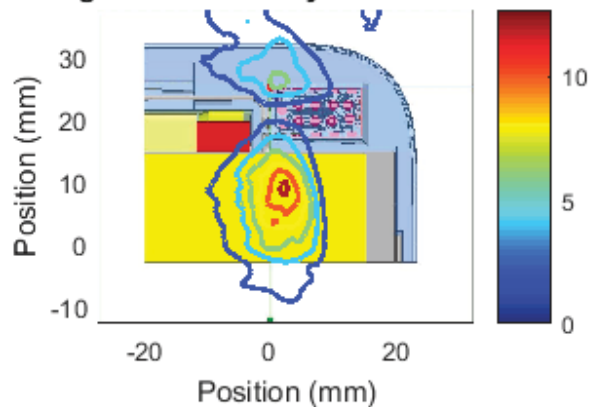
Left Module , Channel 1, front Cut
Sector 29 Near Field Pattern
Average Power Density: 4.75 W/m² over 4 cm²



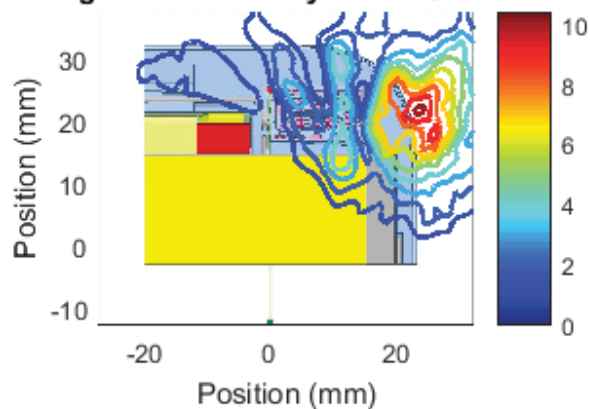
Left Module , Channel 1, front Cut
Sector 30 Near Field Pattern
Average Power Density: 4.12 W/m² over 4 cm²



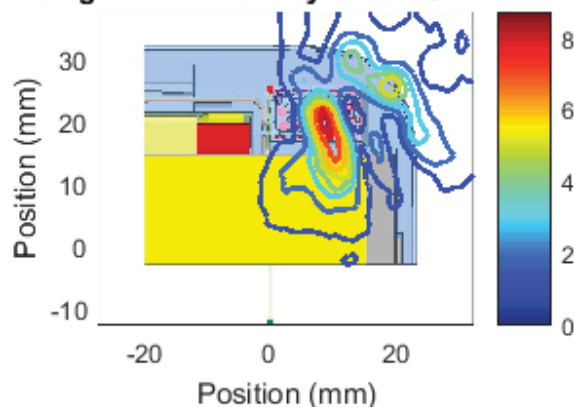
Left Module , Channel 1, front Cut
Sector 31 Near Field Pattern
Average Power Density: 4.55 W/m² over 4 cm²



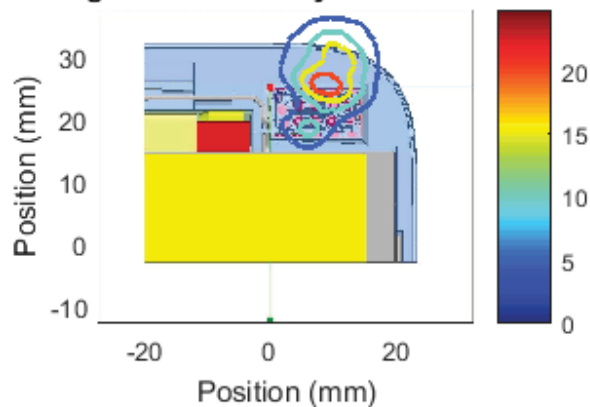
Left Module , Channel 2, front Cut
Sector 0 Near Field Pattern
Average Power Density: 5.12 W/m² over 4 cm²



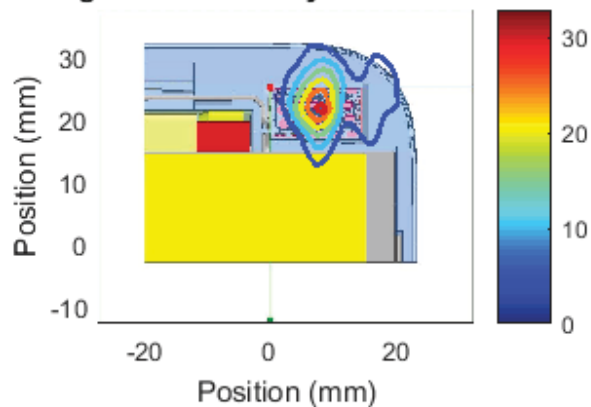
Left Module , Channel 2, front Cut
Sector 1 Near Field Pattern
Average Power Density: 2.85 W/m² over 4 cm²



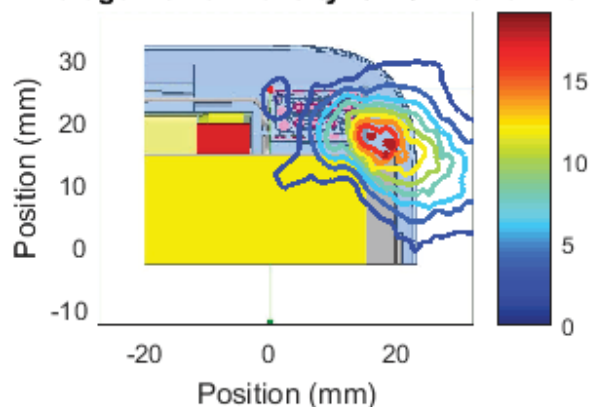
Left Module , Channel 2, front Cut
Sector 2 Near Field Pattern
Average Power Density: 7.5 W/m² over 4 cm²



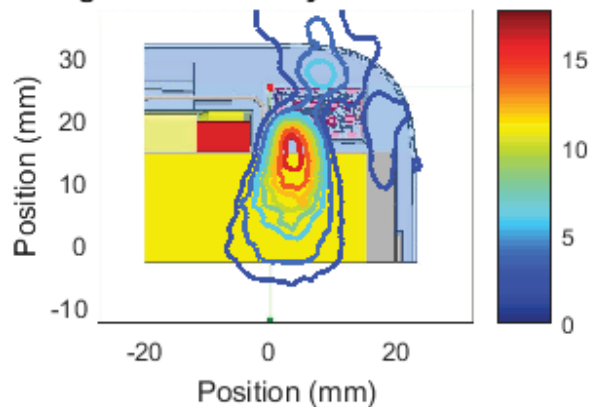
Left Module , Channel 2, front Cut
Sector 3 Near Field Pattern
Average Power Density: 7.37 W/m² over 4 cm²



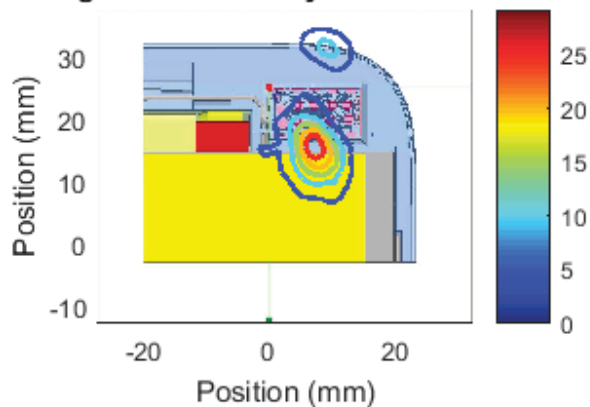
Left Module , Channel 2, front Cut
Sector 4 Near Field Pattern
Average Power Density: 8 W/m² over 4 cm²



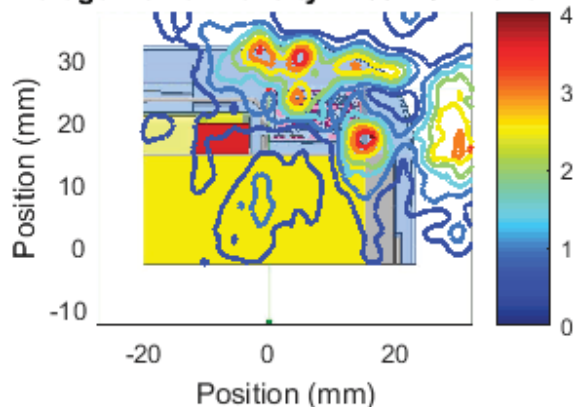
Left Module , Channel 2, front Cut
Sector 5 Near Field Pattern
Average Power Density: 5.96 W/m² over 4 cm²



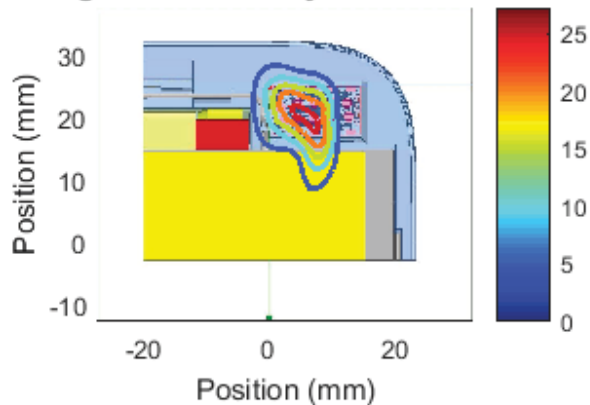
Left Module , Channel 2, front Cut
Sector 6 Near Field Pattern
Average Power Density: 6.16 W/m² over 4 cm²



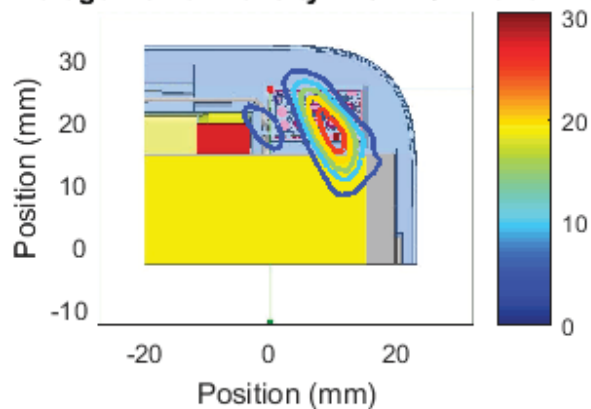
Left Module , Channel 2, front Cut
Sector 7 Near Field Pattern
Average Power Density: 1.68 W/m² over 4 cm²



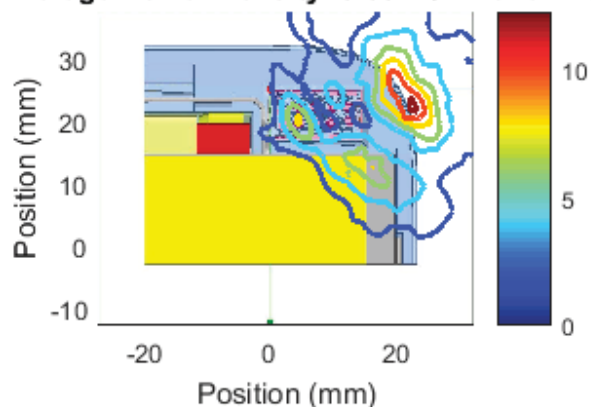
Left Module , Channel 2, front Cut
Sector 8 Near Field Pattern
Average Power Density: 7.53 W/m² over 4 cm²



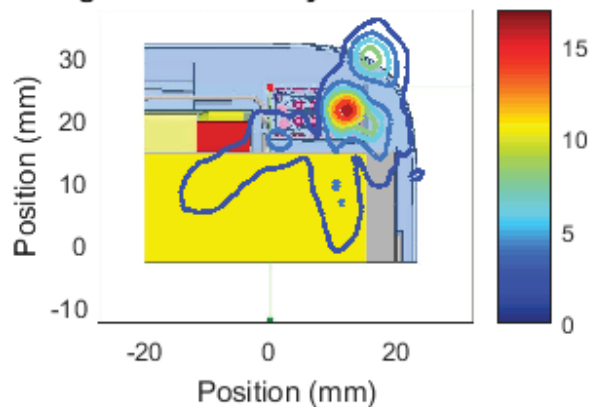
Left Module , Channel 2, front Cut
Sector 9 Near Field Pattern
Average Power Density: 7.02 W/m² over 4 cm²



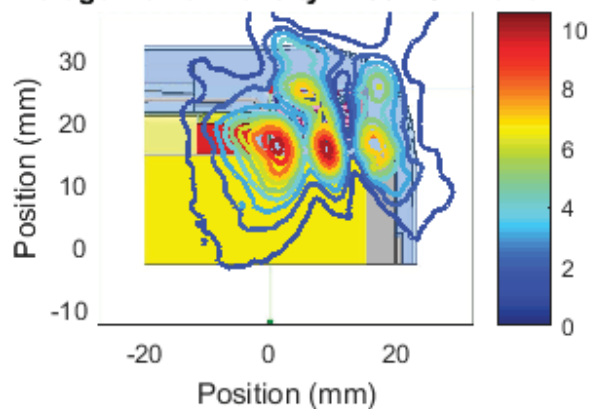
Left Module , Channel 2, front Cut
Sector 10 Near Field Pattern
Average Power Density: 5.08 W/m² over 4 cm²



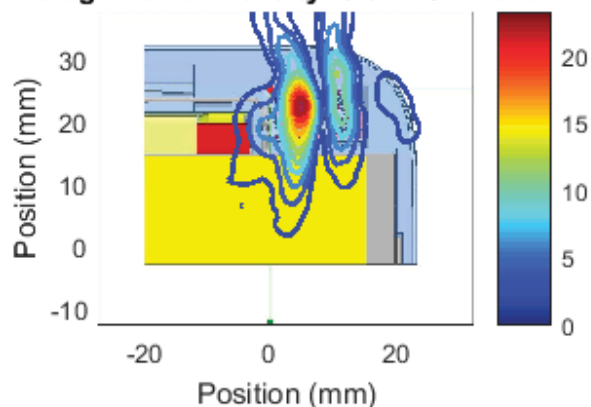
Left Module , Channel 2, front Cut
Sector 11 Near Field Pattern
Average Power Density: 3.92 W/m² over 4 cm²



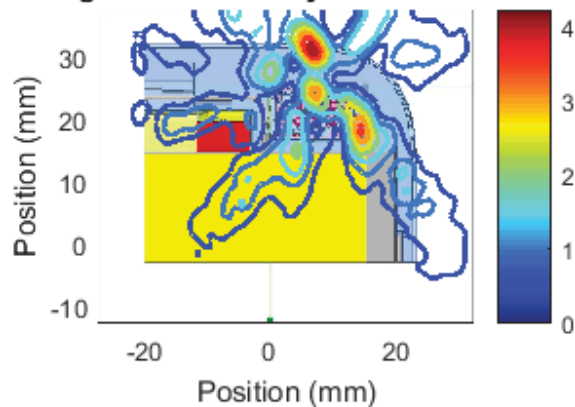
Left Module , Channel 2, front Cut
Sector 12 Near Field Pattern
Average Power Density: 4.56 W/m² over 4 cm²



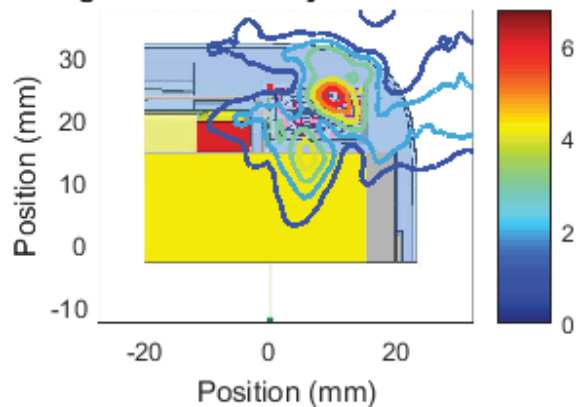
Left Module , Channel 2, front Cut
Sector 13 Near Field Pattern
Average Power Density: 5.94 W/m² over 4 cm²



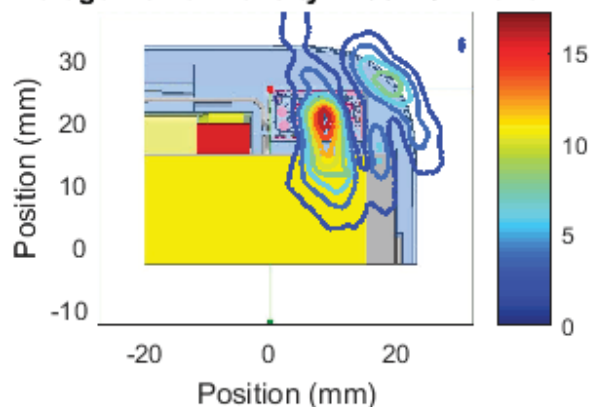
Left Module , Channel 2, front Cut
Sector 14 Near Field Pattern
Average Power Density: 1.32 W/m² over 4 cm²



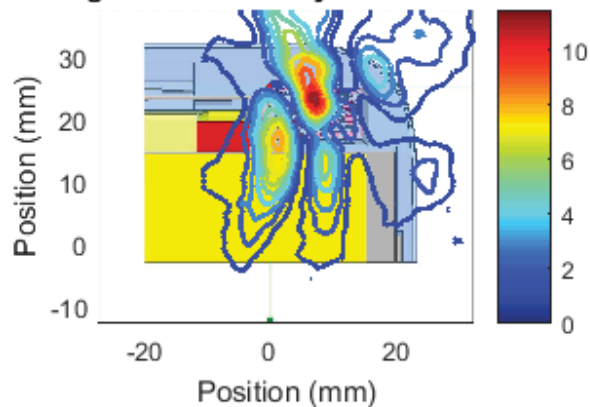
Left Module , Channel 2, front Cut
Sector 15 Near Field Pattern
Average Power Density: 2.53 W/m² over 4 cm²



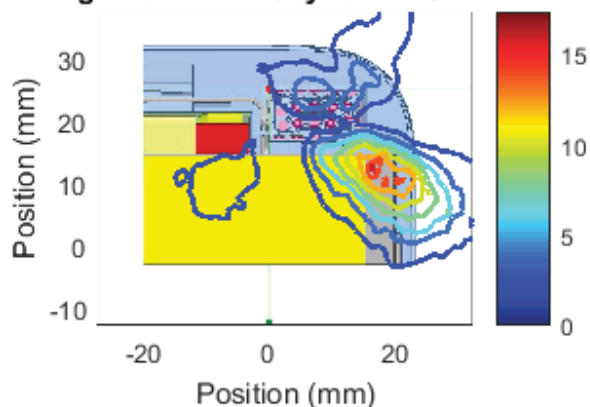
Left Module , Channel 2, front Cut
Sector 16 Near Field Pattern
Average Power Density: 4.95 W/m² over 4 cm²



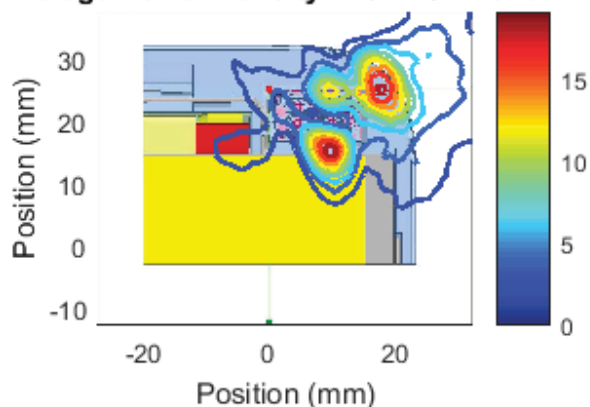
Left Module , Channel 2, front Cut
Sector 17 Near Field Pattern
Average Power Density: 3.6 W/m² over 4 cm²



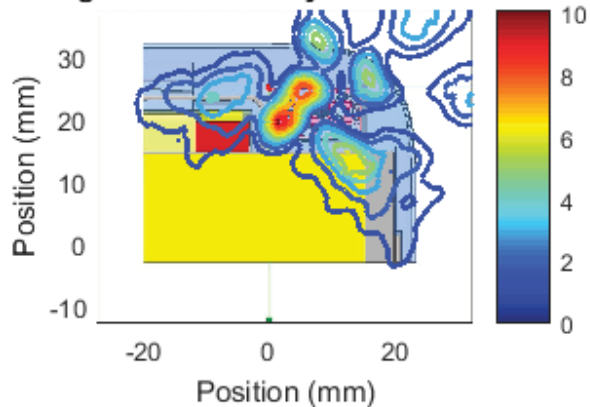
Left Module , Channel 2, front Cut
Sector 18 Near Field Pattern
Average Power Density: 6.12 W/m² over 4 cm²



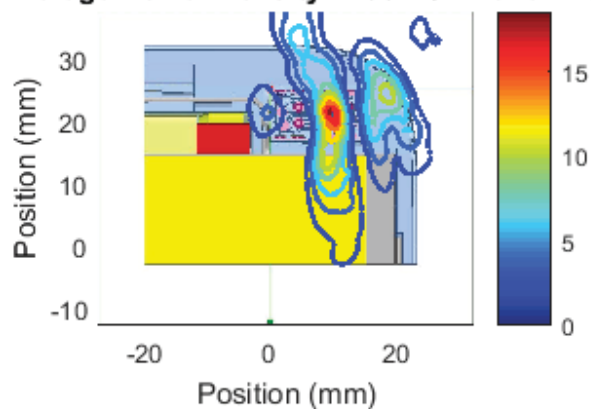
Left Module , Channel 2, front Cut
Sector 19 Near Field Pattern
Average Power Density: 7.52 W/m² over 4 cm²



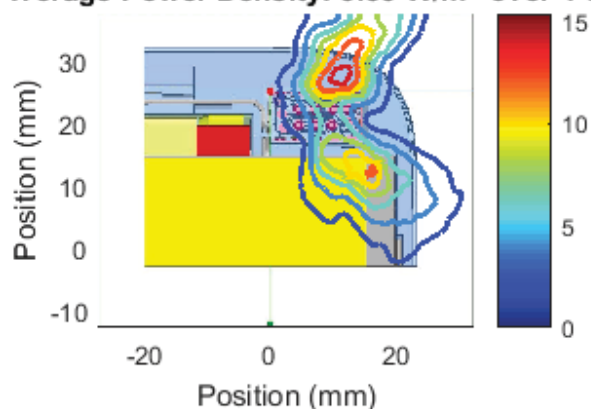
Left Module , Channel 2, front Cut
Sector 20 Near Field Pattern
Average Power Density: 2.83 W/m² over 4 cm²



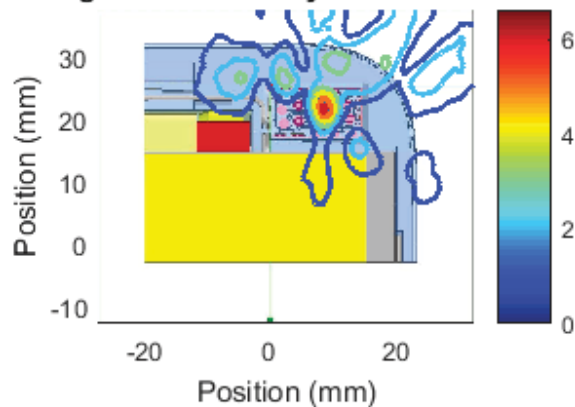
Left Module , Channel 2, front Cut
Sector 21 Near Field Pattern
Average Power Density: 4.96 W/m² over 4 cm²



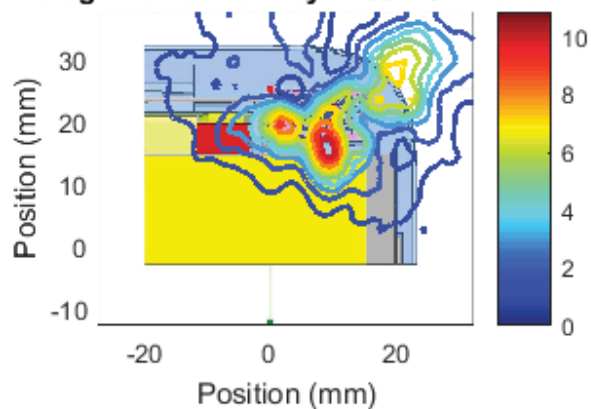
Left Module , Channel 2, front Cut
Sector 22 Near Field Pattern
Average Power Density: 5.83 W/m² over 4 cm²



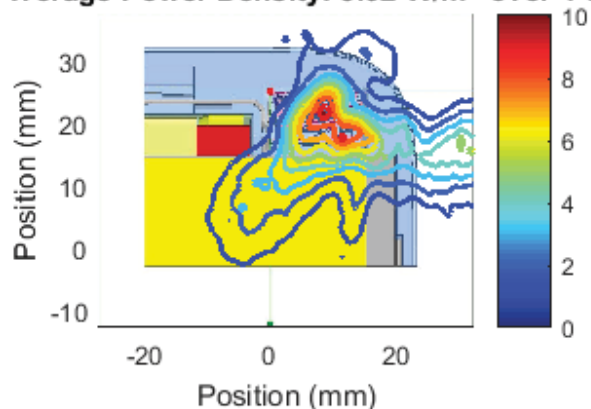
Left Module , Channel 2, front Cut
Sector 23 Near Field Pattern
Average Power Density: 1.78 W/m² over 4 cm²



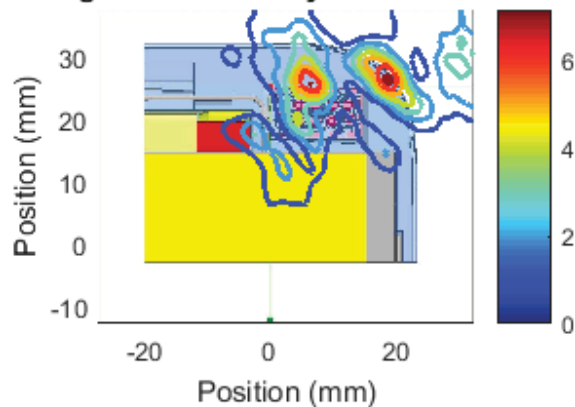
Left Module , Channel 2, front Cut
Sector 24 Near Field Pattern
Average Power Density: 4.33 W/m² over 4 cm²



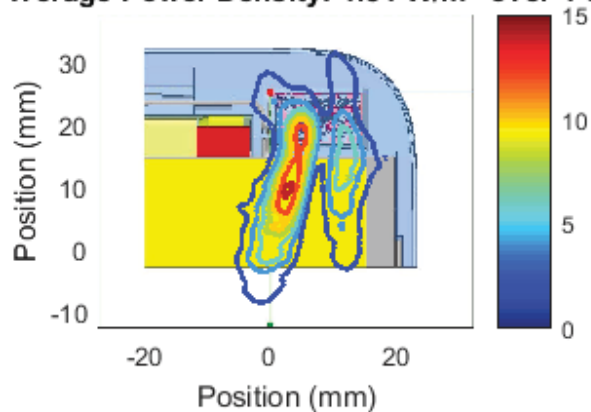
Left Module , Channel 2, front Cut
Sector 25 Near Field Pattern
Average Power Density: 3.92 W/m² over 4 cm²



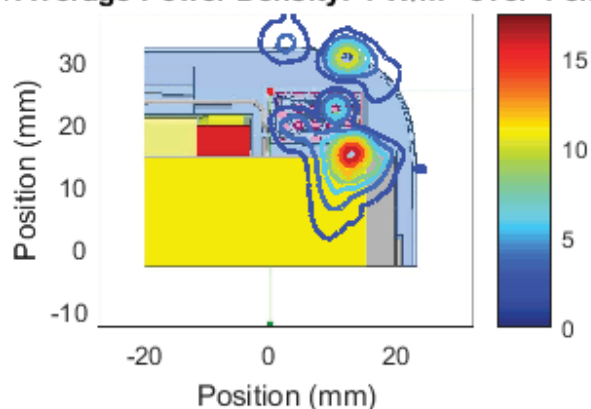
Left Module , Channel 2, front Cut
Sector 26 Near Field Pattern
Average Power Density: 2.34 W/m² over 4 cm²



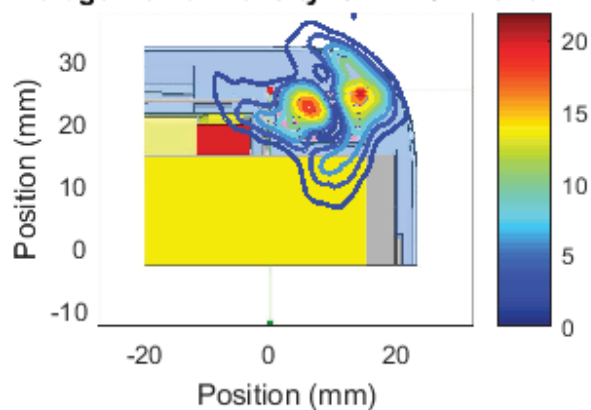
Left Module , Channel 2, front Cut
Sector 27 Near Field Pattern
Average Power Density: 4.84 W/m² over 4 cm²

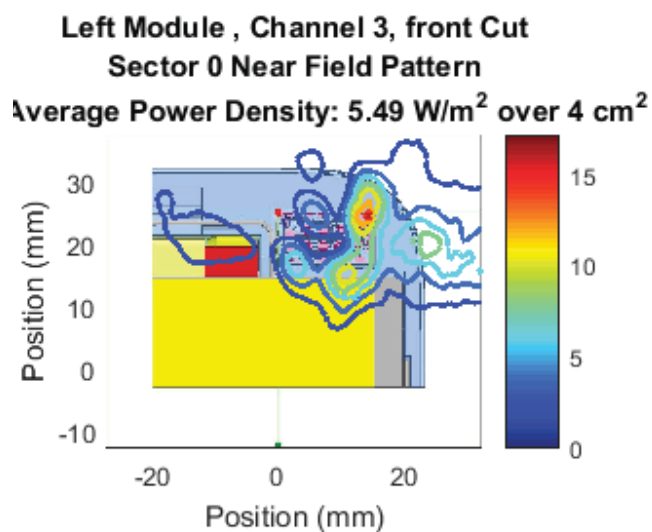
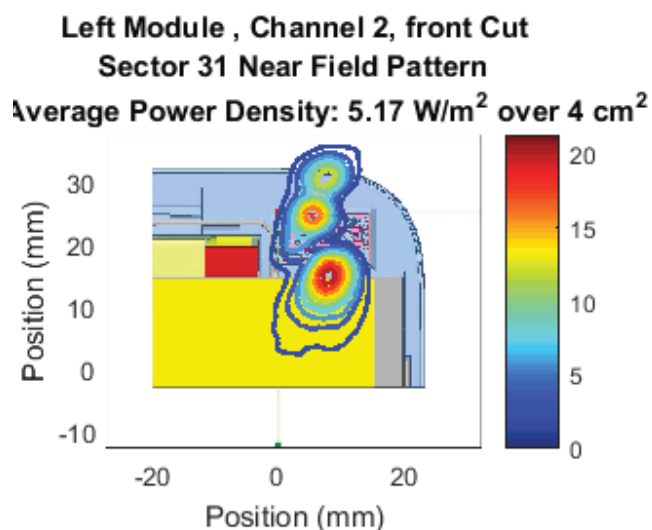
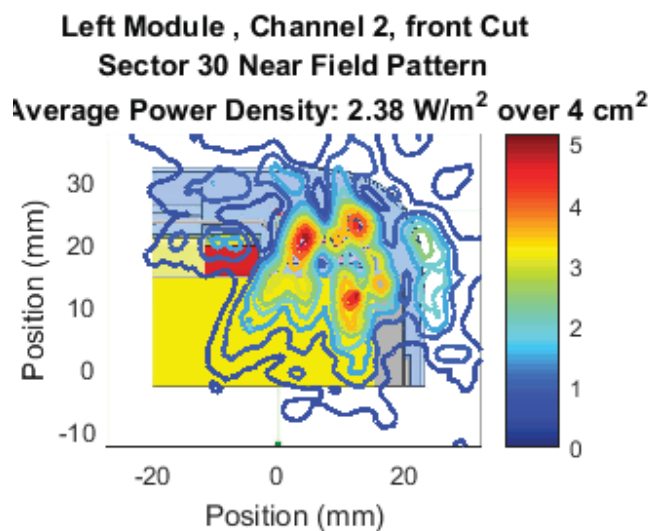


Left Module , Channel 2, front Cut
Sector 28 Near Field Pattern
Average Power Density: 4 W/m² over 4 cm²

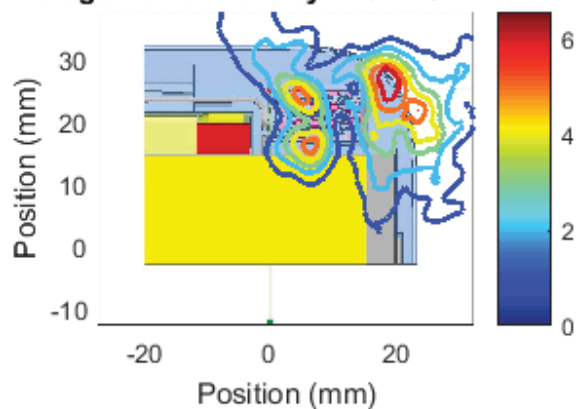


Left Module , Channel 2, front Cut
Sector 29 Near Field Pattern
Average Power Density: 5.71 W/m² over 4 cm²

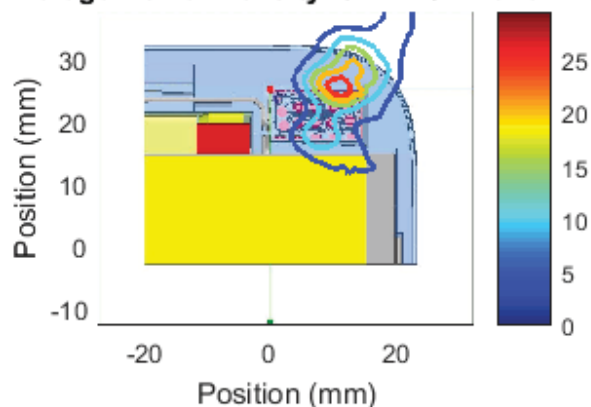




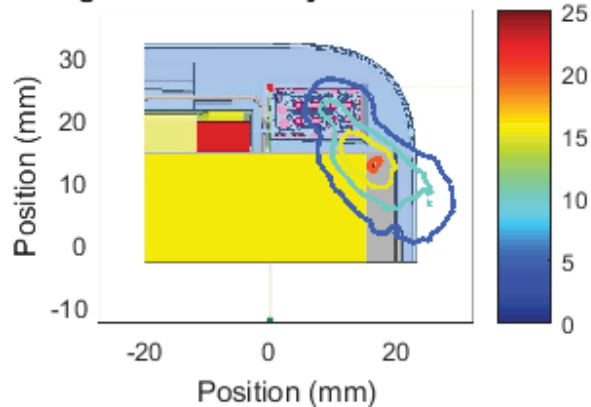
Left Module , Channel 3, front Cut
Sector 1 Near Field Pattern
Average Power Density: 2.91 W/m² over 4 cm²



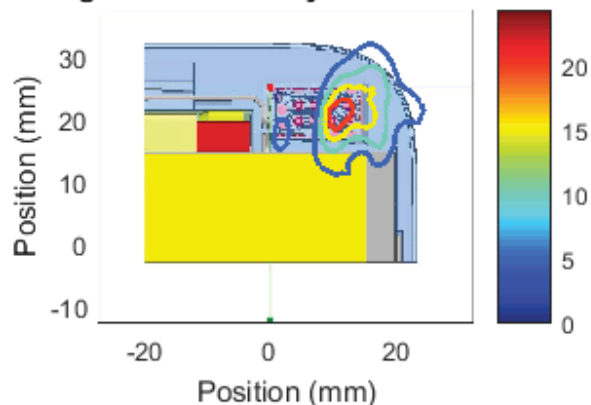
Left Module , Channel 3, front Cut
Sector 2 Near Field Pattern
Average Power Density: 8.71 W/m² over 4 cm²



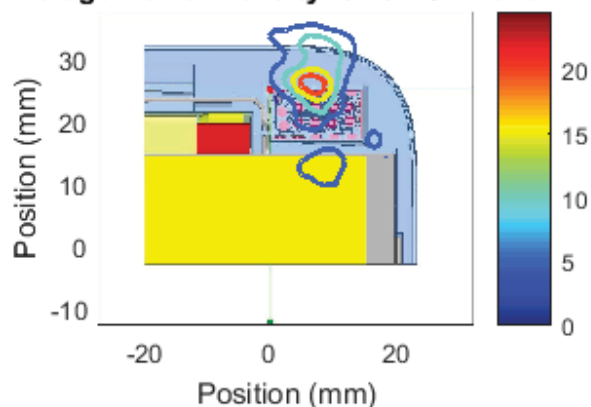
Left Module , Channel 3, front Cut
Sector 3 Near Field Pattern
Average Power Density: 8.15 W/m² over 4 cm²



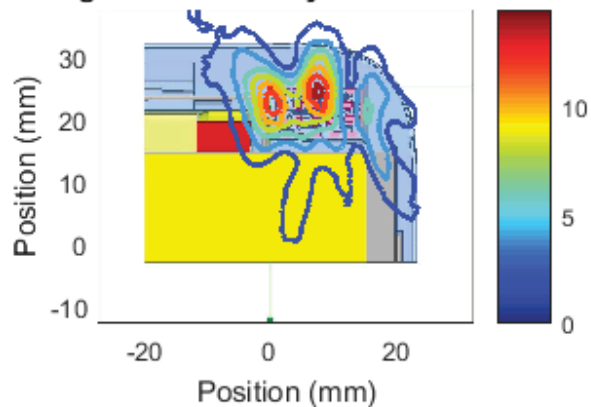
Left Module , Channel 3, front Cut
Sector 4 Near Field Pattern
Average Power Density: 7.53 W/m² over 4 cm²



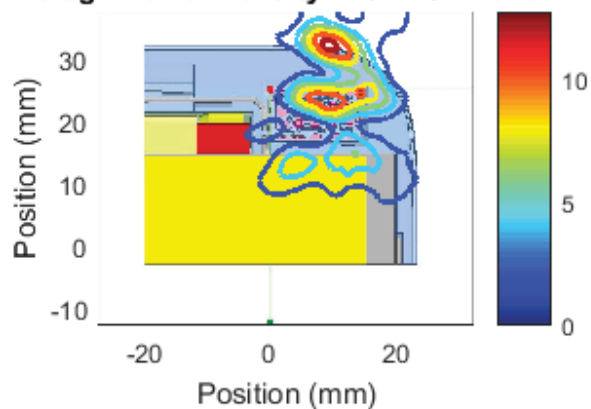
Left Module , Channel 3, front Cut
Sector 5 Near Field Pattern
Average Power Density: 5.73 W/m² over 4 cm²



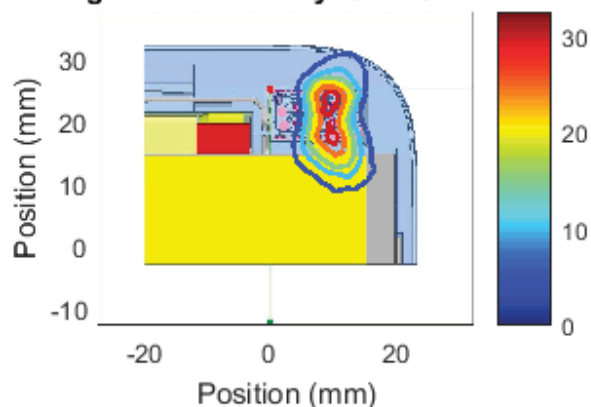
Left Module , Channel 3, front Cut
Sector 6 Near Field Pattern
Average Power Density: 5.44 W/m² over 4 cm²



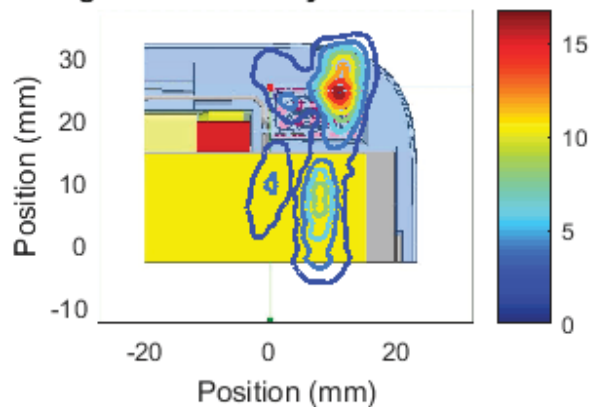
Left Module , Channel 3, front Cut
Sector 7 Near Field Pattern
Average Power Density: 4.37 W/m² over 4 cm²



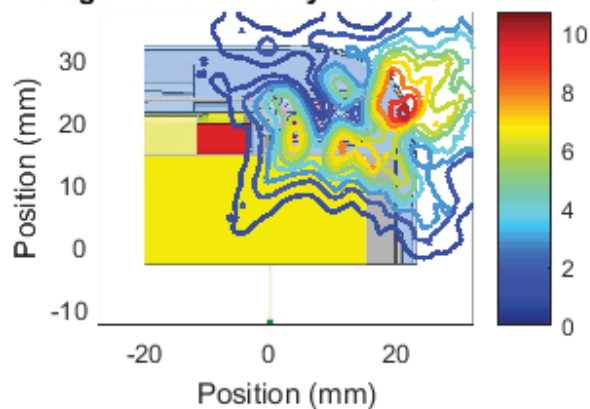
Left Module , Channel 3, front Cut
Sector 8 Near Field Pattern
Average Power Density: 8.7 W/m² over 4 cm²



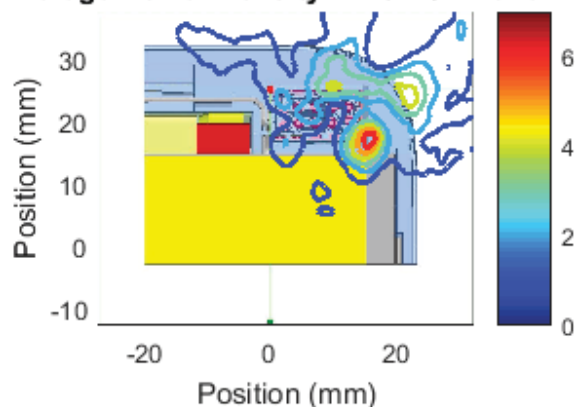
Left Module , Channel 3, front Cut
Sector 9 Near Field Pattern
Average Power Density: 3.91 W/m² over 4 cm²



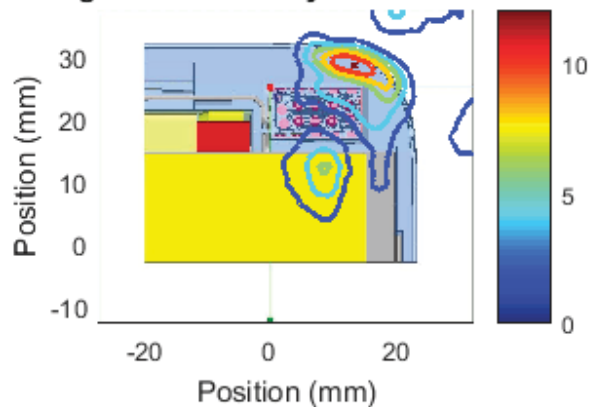
Left Module , Channel 3, front Cut
Sector 10 Near Field Pattern
Average Power Density: 5.51 W/m² over 4 cm²



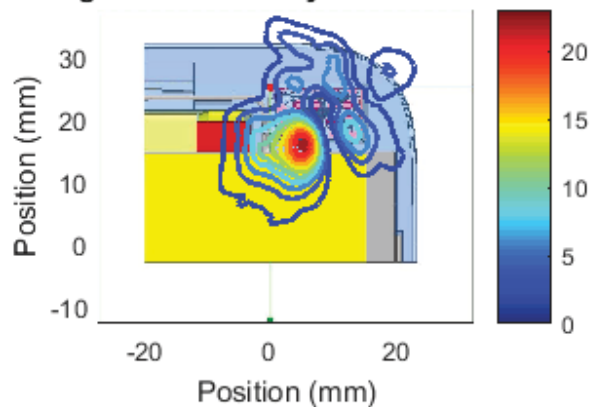
Left Module , Channel 3, front Cut
Sector 11 Near Field Pattern
Average Power Density: 2.18 W/m² over 4 cm²



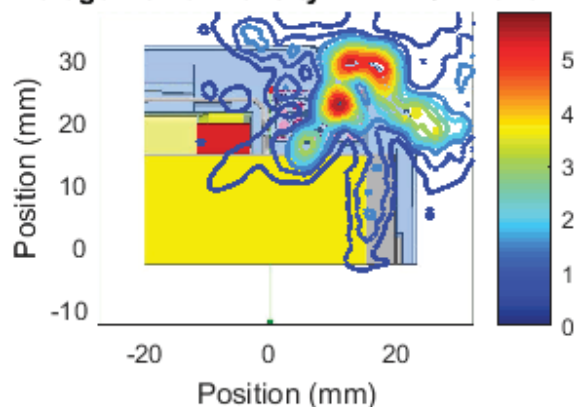
Left Module , Channel 3, front Cut
Sector 12 Near Field Pattern
Average Power Density: 3.66 W/m² over 4 cm²



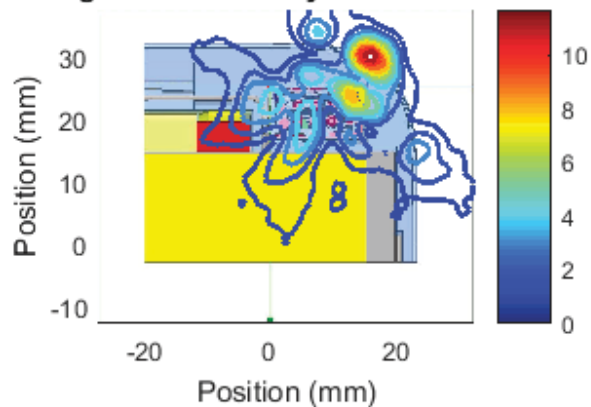
Left Module , Channel 3, front Cut
Sector 13 Near Field Pattern
Average Power Density: 5.93 W/m² over 4 cm²



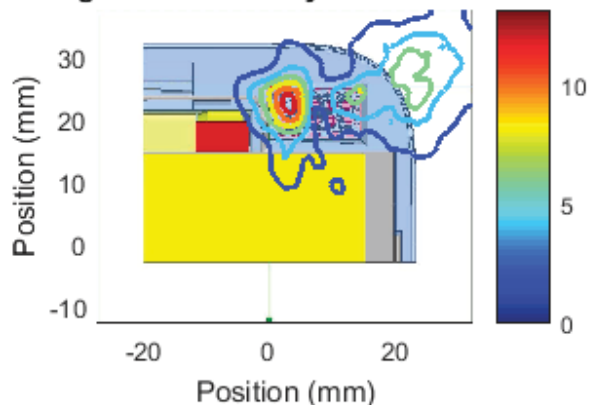
Left Module , Channel 3, front Cut
Sector 14 Near Field Pattern
Average Power Density: 2.14 W/m² over 4 cm²



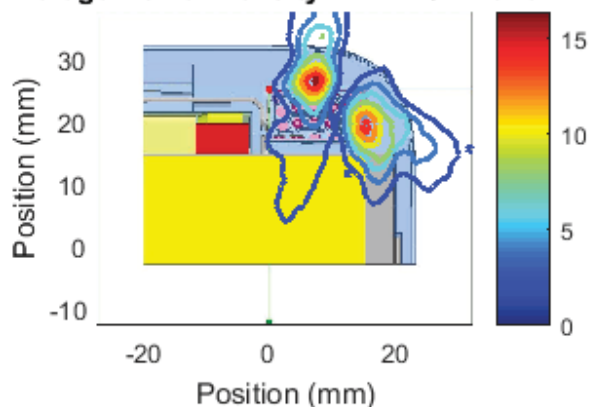
Left Module , Channel 3, front Cut
Sector 15 Near Field Pattern
Average Power Density: 3.28 W/m² over 4 cm²



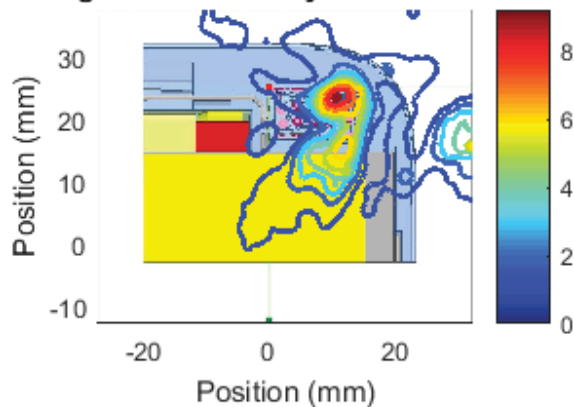
Left Module , Channel 3, front Cut
Sector 16 Near Field Pattern
Average Power Density: 3.83 W/m² over 4 cm²



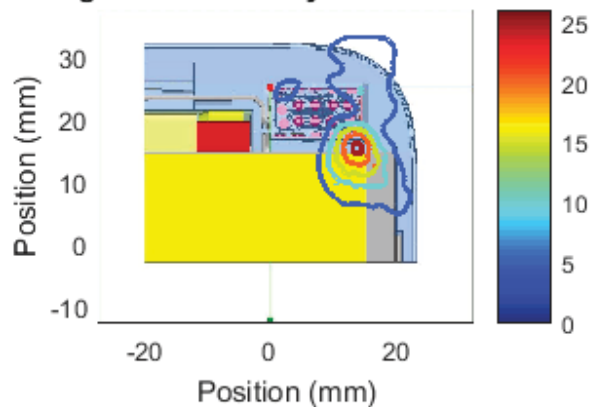
Left Module , Channel 3, front Cut
Sector 17 Near Field Pattern
Average Power Density: 4.72 W/m² over 4 cm²



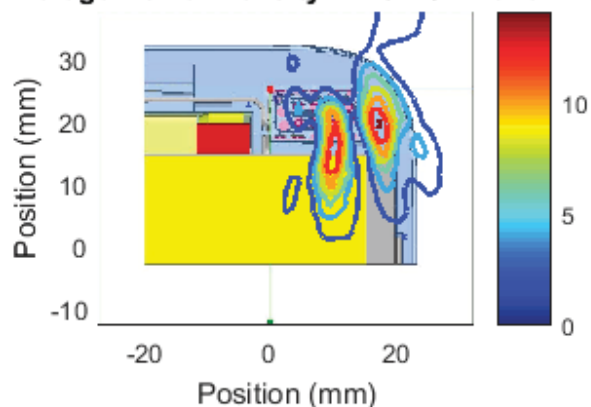
Left Module , Channel 3, front Cut
Sector 18 Near Field Pattern
Average Power Density: 2.63 W/m² over 4 cm²



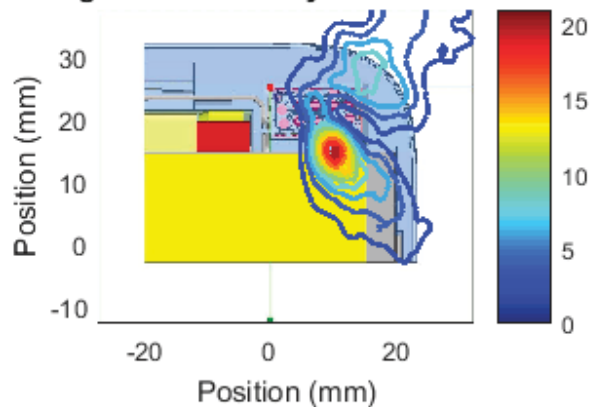
Left Module , Channel 3, front Cut
Sector 19 Near Field Pattern
Average Power Density: 6.64 W/m² over 4 cm²



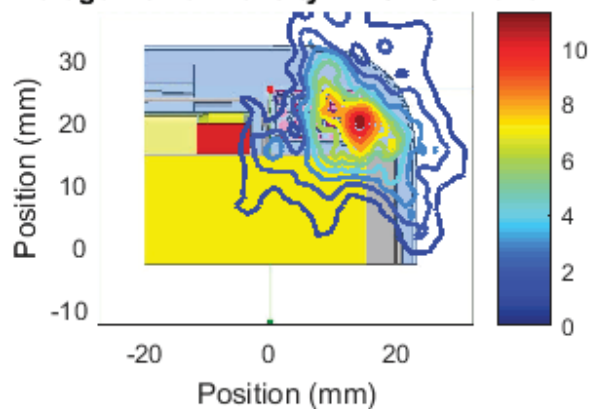
Left Module , Channel 3, front Cut
Sector 20 Near Field Pattern
Average Power Density: 4.73 W/m² over 4 cm²



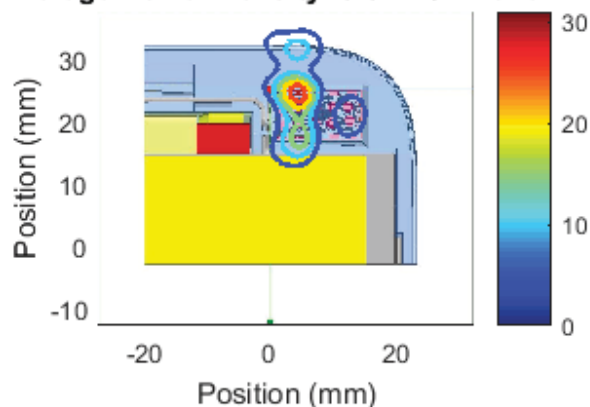
Left Module , Channel 3, front Cut
Sector 21 Near Field Pattern
Average Power Density: 5.53 W/m² over 4 cm²



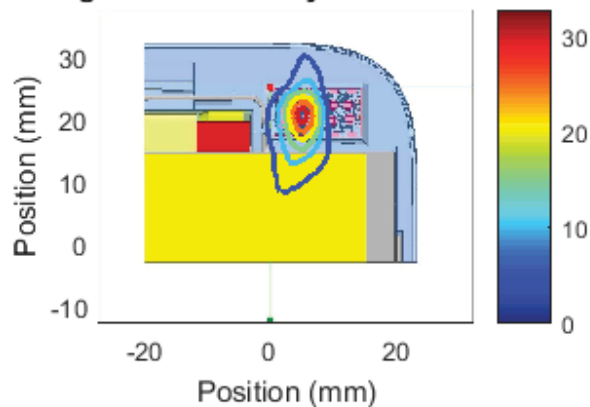
Left Module , Channel 3, front Cut
Sector 22 Near Field Pattern
Average Power Density: 4.43 W/m² over 4 cm²



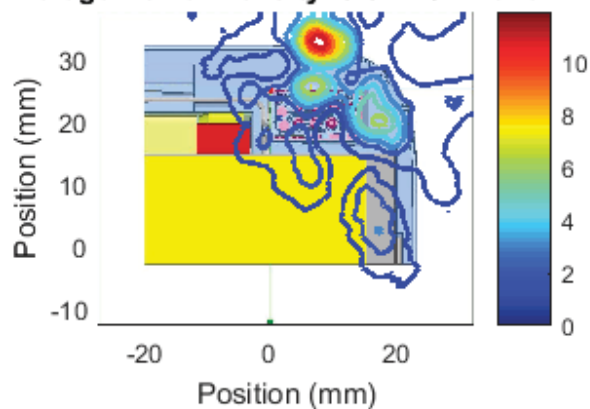
Left Module , Channel 3, front Cut
Sector 23 Near Field Pattern
Average Power Density: 5.87 W/m² over 4 cm²



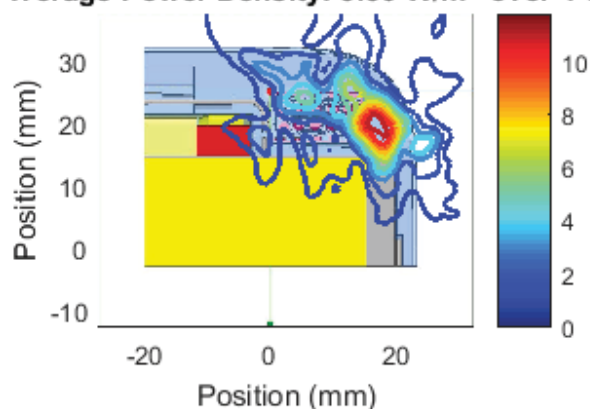
Left Module , Channel 3, front Cut
Sector 24 Near Field Pattern
Average Power Density: 6.13 W/m² over 4 cm²



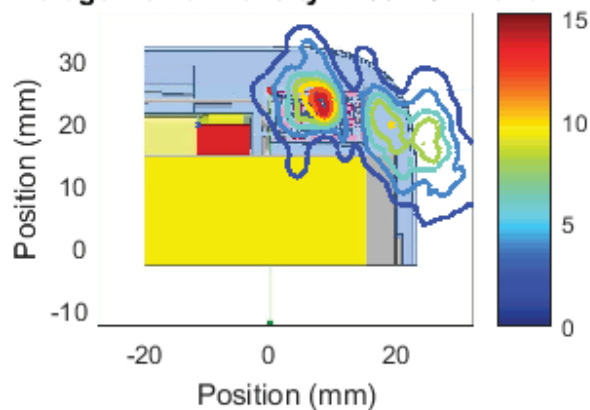
Left Module , Channel 3, front Cut
Sector 25 Near Field Pattern
Average Power Density: 3.31 W/m² over 4 cm²



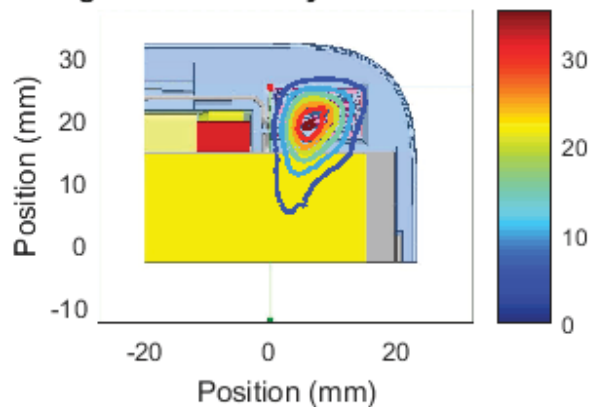
Left Module , Channel 3, front Cut
Sector 26 Near Field Pattern
Average Power Density: 3.36 W/m² over 4 cm²



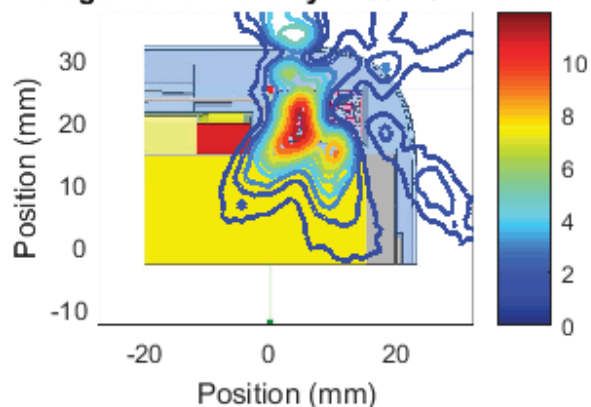
Left Module , Channel 3, front Cut
Sector 27 Near Field Pattern
Average Power Density: 4.66 W/m² over 4 cm²



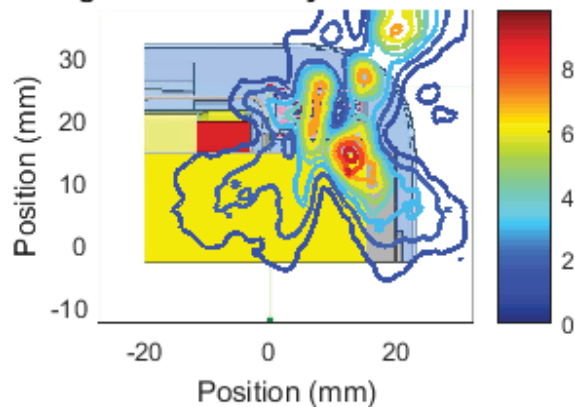
Left Module , Channel 3, front Cut
Sector 28 Near Field Pattern
Average Power Density: 8.42 W/m² over 4 cm²



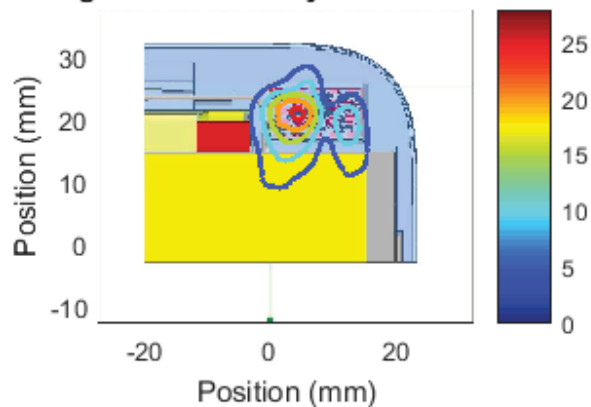
Left Module , Channel 3, front Cut
Sector 29 Near Field Pattern
Average Power Density: 4.05 W/m² over 4 cm²



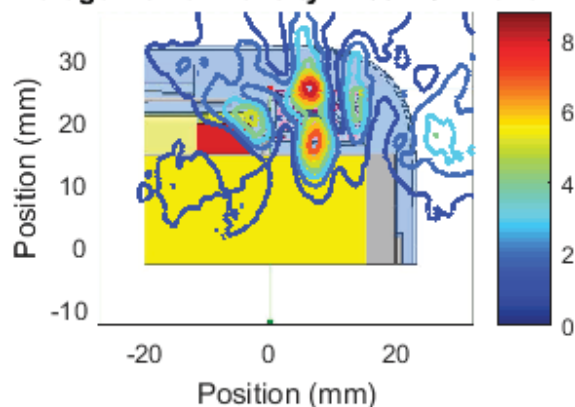
Left Module , Channel 3, front Cut
Sector 30 Near Field Pattern
Average Power Density: 3.93 W/m² over 4 cm²



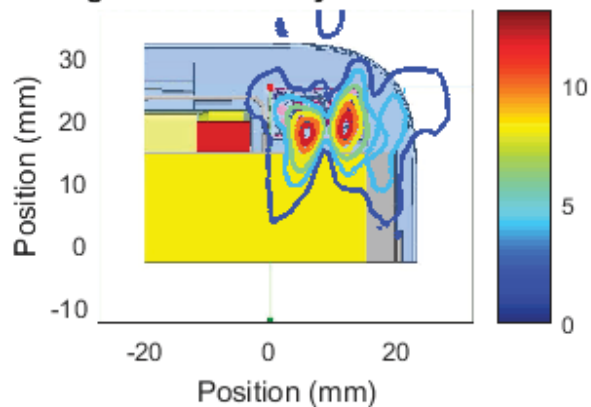
Left Module , Channel 3, front Cut
Sector 31 Near Field Pattern
Average Power Density: 7.68 W/m² over 4 cm²



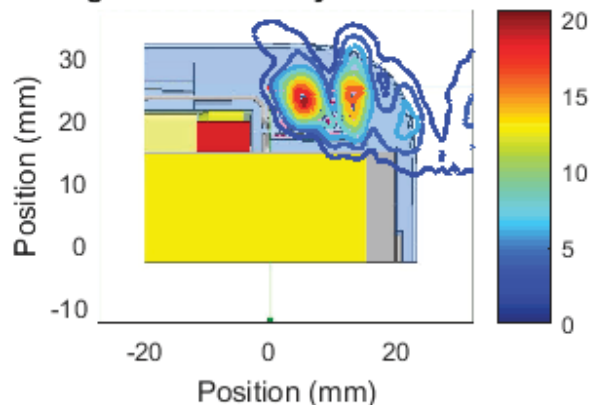
Left Module , Channel 4, front Cut
Sector 0 Near Field Pattern
Average Power Density: 2.65 W/m² over 4 cm²



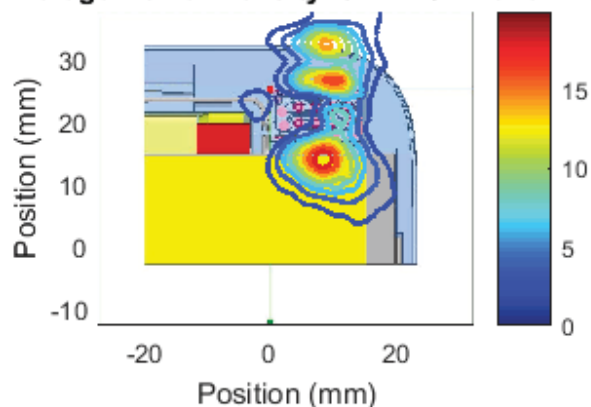
Left Module , Channel 4, front Cut
Sector 1 Near Field Pattern
Average Power Density: 4.6 W/m² over 4 cm²



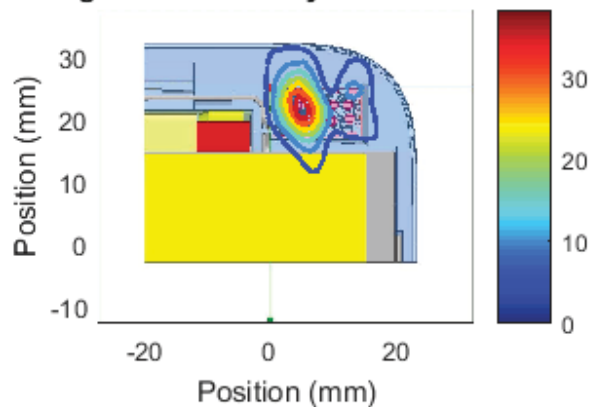
Left Module , Channel 4, front Cut
Sector 2 Near Field Pattern
Average Power Density: 5.6 W/m² over 4 cm²



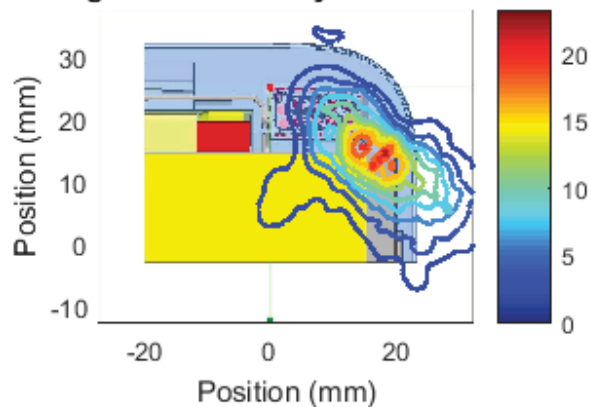
Left Module , Channel 4, front Cut
Sector 3 Near Field Pattern
Average Power Density: 5.72 W/m² over 4 cm²



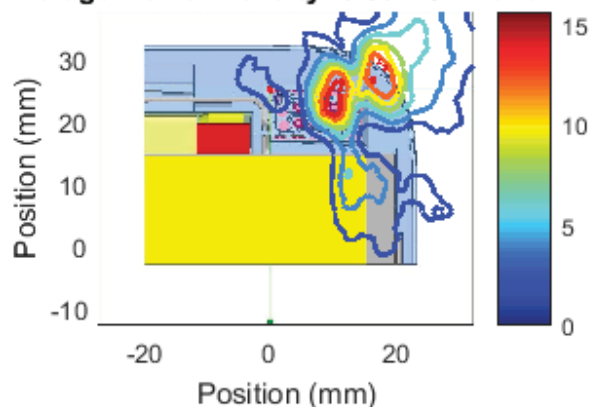
Left Module , Channel 4, front Cut
Sector 4 Near Field Pattern
Average Power Density: 8.33 W/m² over 4 cm²



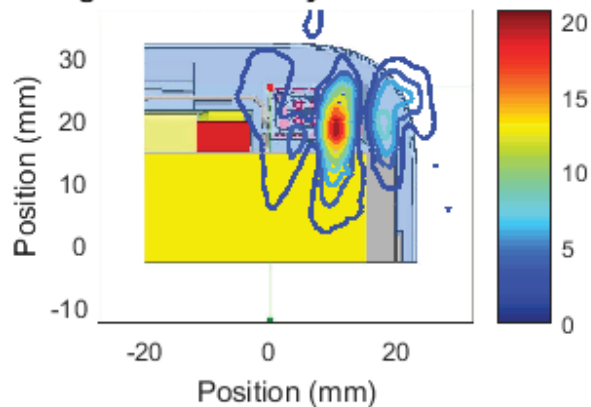
Left Module , Channel 4, front Cut
Sector 5 Near Field Pattern
Average Power Density: 8.5 W/m² over 4 cm²



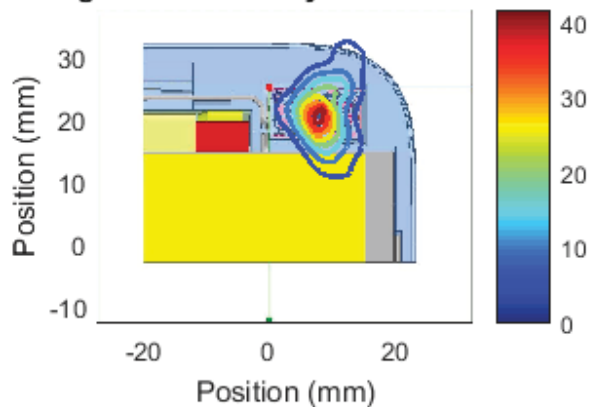
Left Module , Channel 4, front Cut
Sector 6 Near Field Pattern
Average Power Density: 6.39 W/m² over 4 cm²



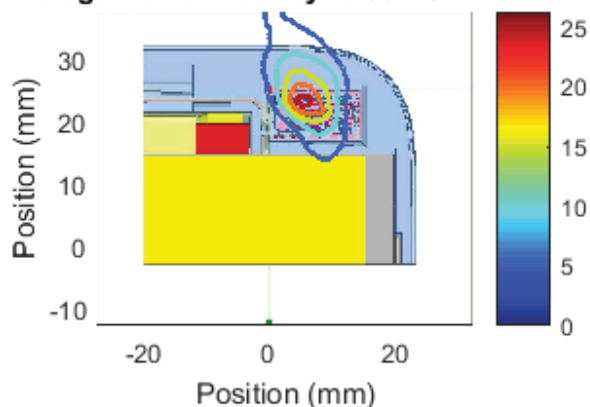
Left Module , Channel 4, front Cut
Sector 7 Near Field Pattern
Average Power Density: 4.48 W/m² over 4 cm²



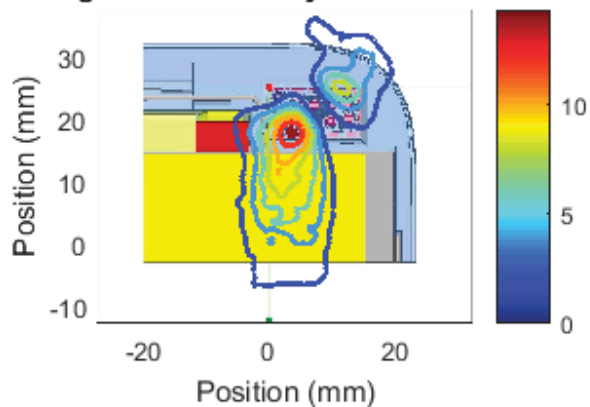
Left Module , Channel 4, front Cut
Sector 8 Near Field Pattern
Average Power Density: 8.16 W/m² over 4 cm²



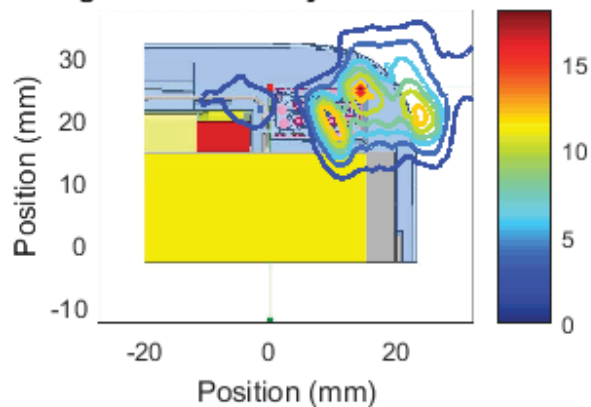
Left Module , Channel 4, front Cut
Sector 9 Near Field Pattern
Average Power Density: 6.86 W/m² over 4 cm²



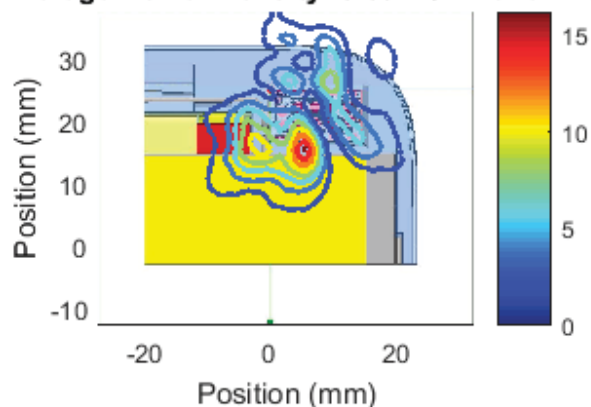
Left Module , Channel 4, front Cut
Sector 10 Near Field Pattern
Average Power Density: 4.62 W/m² over 4 cm²



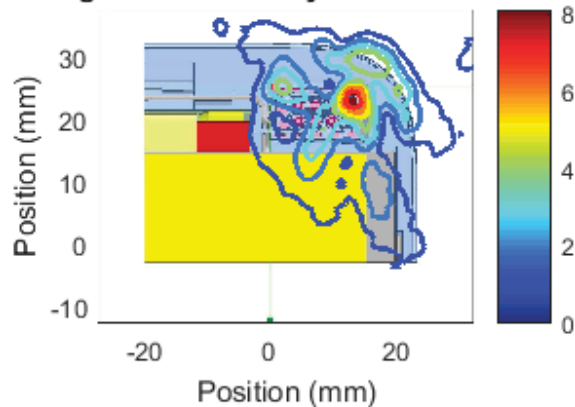
Left Module , Channel 4, front Cut
Sector 11 Near Field Pattern
Average Power Density: 6.38 W/m² over 4 cm²



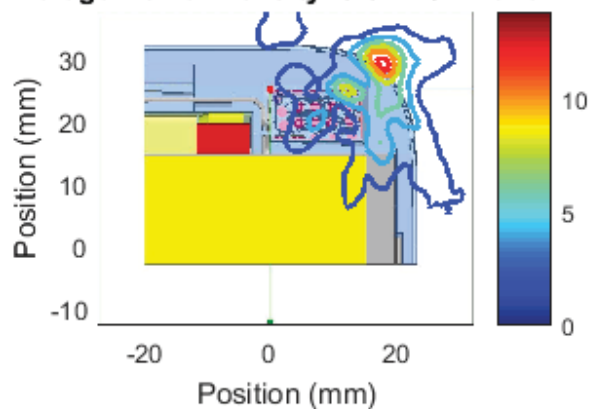
Left Module , Channel 4, front Cut
Sector 12 Near Field Pattern
Average Power Density: 5.09 W/m² over 4 cm²



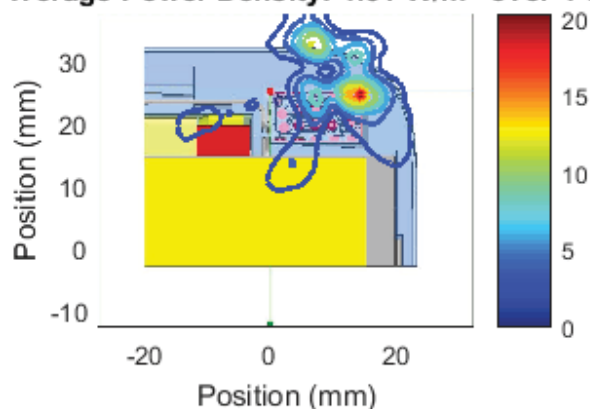
Left Module , Channel 4, front Cut
Sector 13 Near Field Pattern
Average Power Density: 2.63 W/m² over 4 cm²



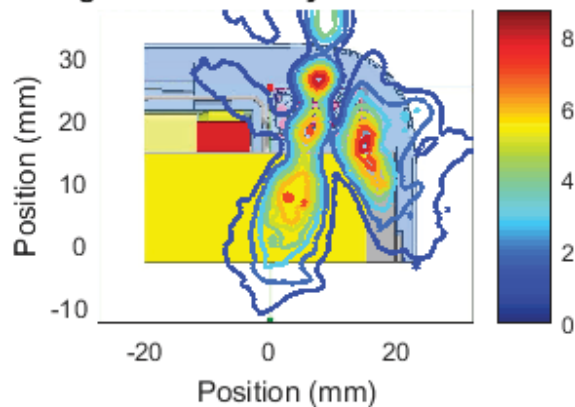
Left Module , Channel 4, front Cut
Sector 14 Near Field Pattern
Average Power Density: 3.87 W/m² over 4 cm²



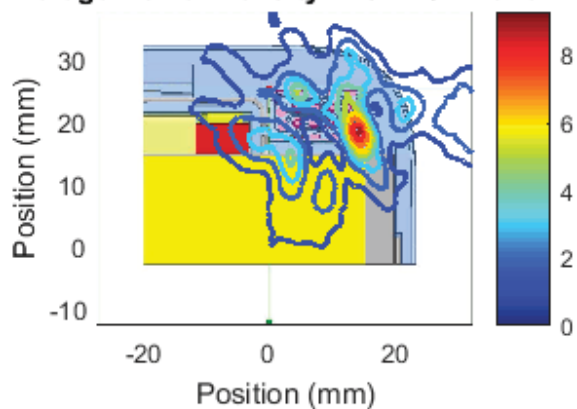
Left Module , Channel 4, front Cut
Sector 15 Near Field Pattern
Average Power Density: 4.31 W/m² over 4 cm²



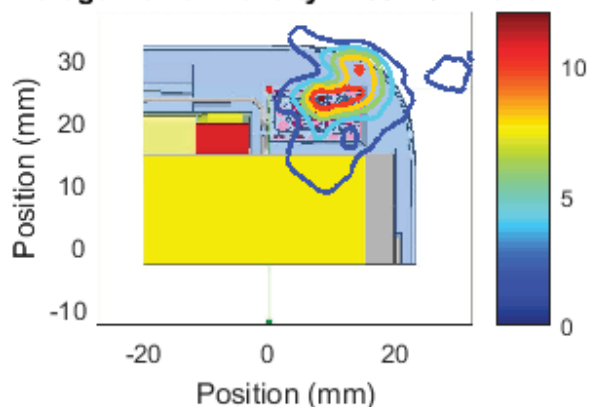
Left Module , Channel 4, front Cut
Sector 16 Near Field Pattern
Average Power Density: 3.52 W/m² over 4 cm²



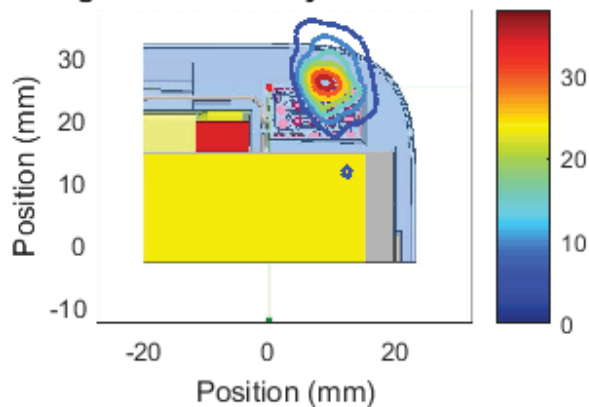
Left Module , Channel 4, front Cut
Sector 17 Near Field Pattern
Average Power Density: 2.52 W/m² over 4 cm²



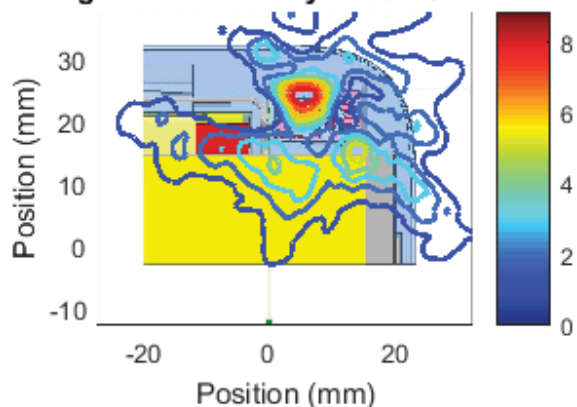
Left Module , Channel 4, front Cut
Sector 18 Near Field Pattern
Average Power Density: 4.05 W/m² over 4 cm²



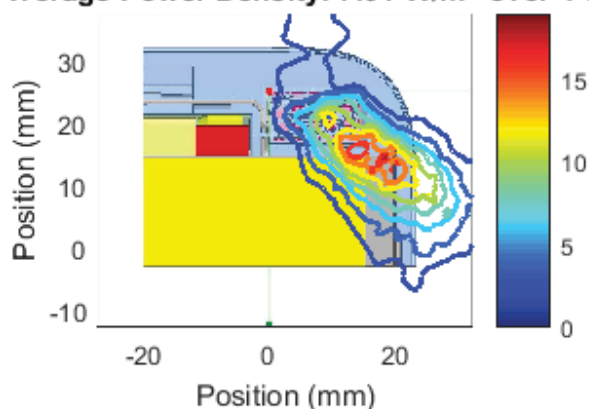
Left Module , Channel 4, front Cut
Sector 19 Near Field Pattern
Average Power Density: 7.78 W/m² over 4 cm²



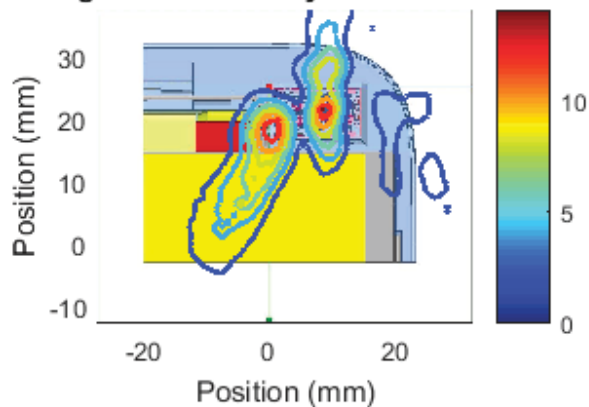
Left Module , Channel 4, front Cut
Sector 20 Near Field Pattern
Average Power Density: 2.98 W/m² over 4 cm²



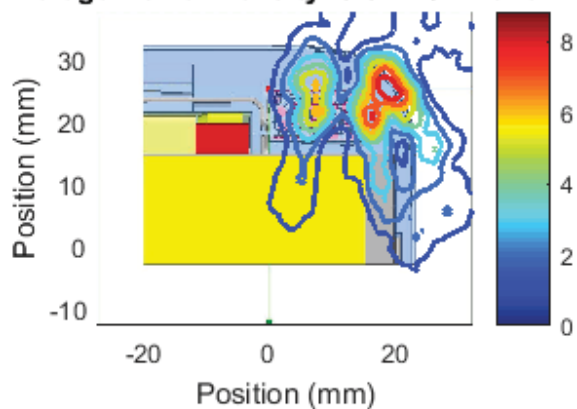
Left Module , Channel 4, front Cut
Sector 21 Near Field Pattern
Average Power Density: 7.91 W/m² over 4 cm²



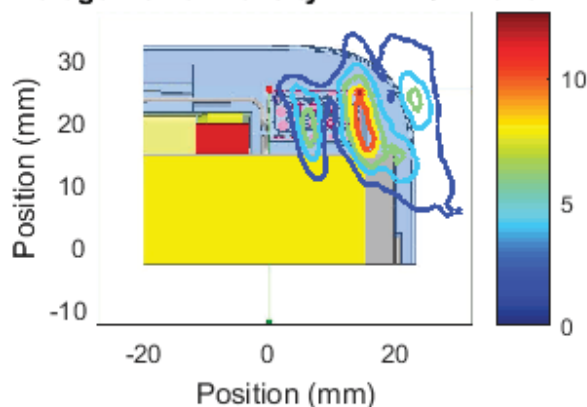
Left Module , Channel 4, front Cut
Sector 22 Near Field Pattern
Average Power Density: 4.44 W/m² over 4 cm²



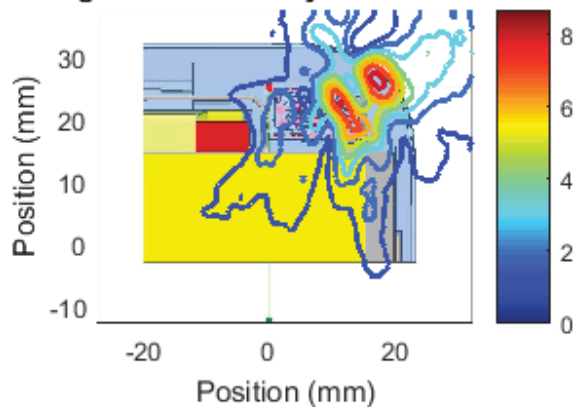
Left Module , Channel 4, front Cut
Sector 23 Near Field Pattern
Average Power Density: 3.37 W/m² over 4 cm²



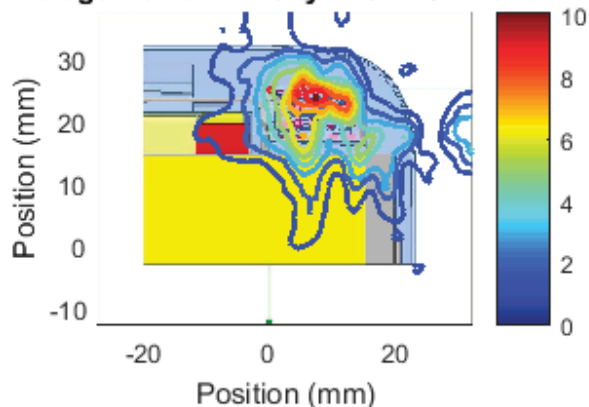
Left Module , Channel 4, front Cut
Sector 24 Near Field Pattern
Average Power Density: 4.17 W/m² over 4 cm²



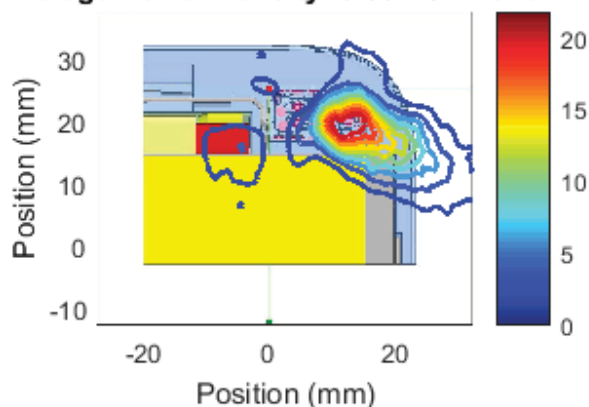
Left Module , Channel 4, front Cut
Sector 25 Near Field Pattern
Average Power Density: 3.51 W/m² over 4 cm²



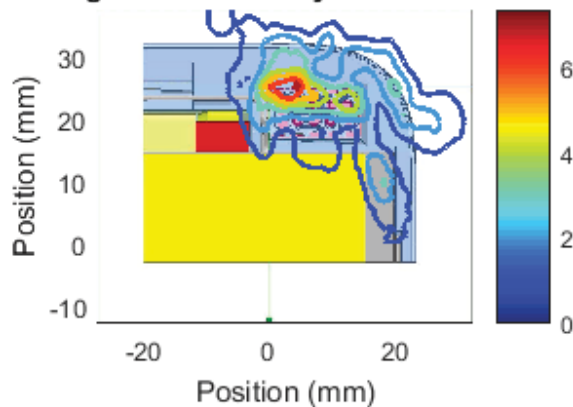
Left Module , Channel 4, front Cut
Sector 26 Near Field Pattern
Average Power Density: 4.04 W/m² over 4 cm²



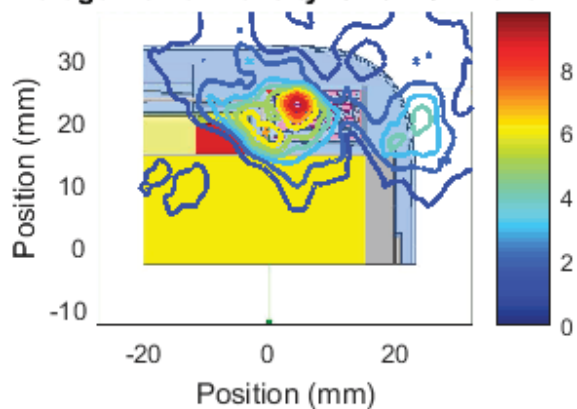
Left Module , Channel 4, front Cut
Sector 27 Near Field Pattern
Average Power Density: 6.86 W/m² over 4 cm²



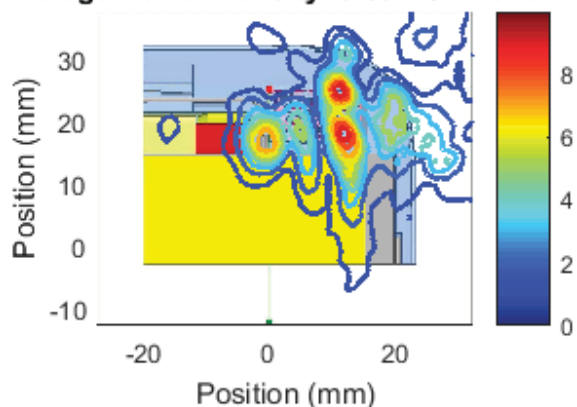
Left Module , Channel 4, front Cut
Sector 28 Near Field Pattern
Average Power Density: 2.4 W/m² over 4 cm²



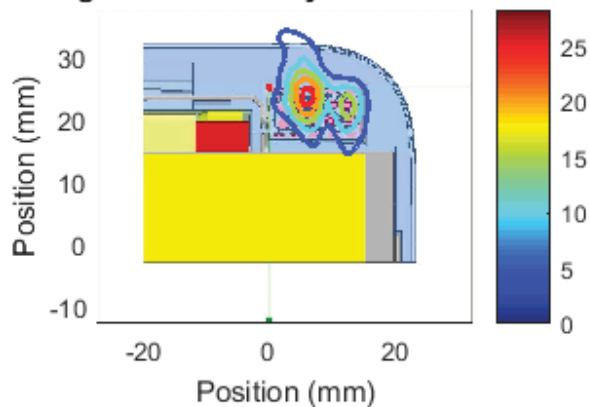
Left Module , Channel 4, front Cut
Sector 29 Near Field Pattern
Average Power Density: 3.19 W/m² over 4 cm²



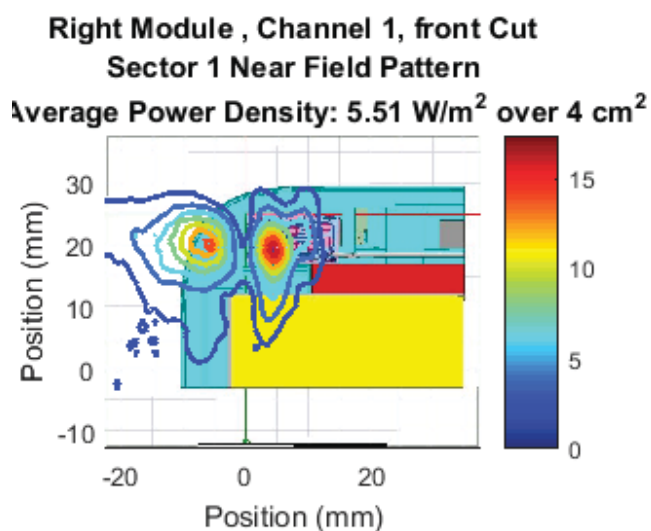
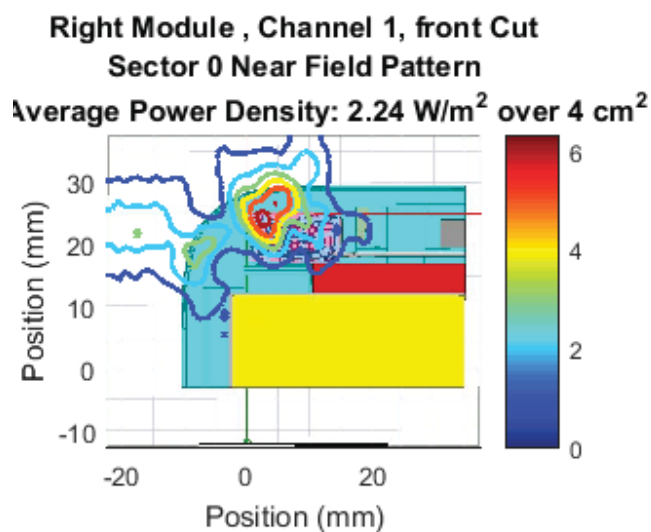
Left Module , Channel 4, front Cut
Sector 30 Near Field Pattern
Average Power Density: 3.39 W/m² over 4 cm²



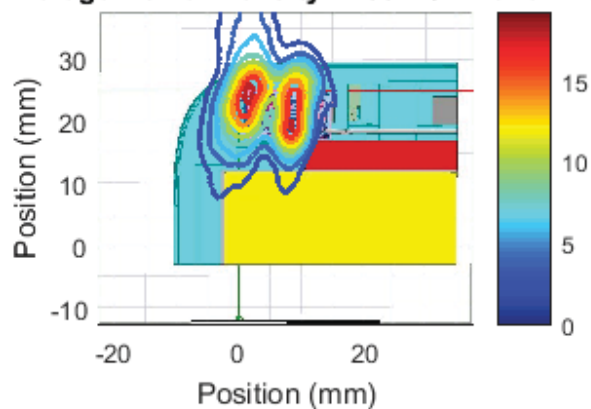
Left Module , Channel 4, front Cut
Sector 31 Near Field Pattern
Average Power Density: 6.15 W/m² over 4 cm²



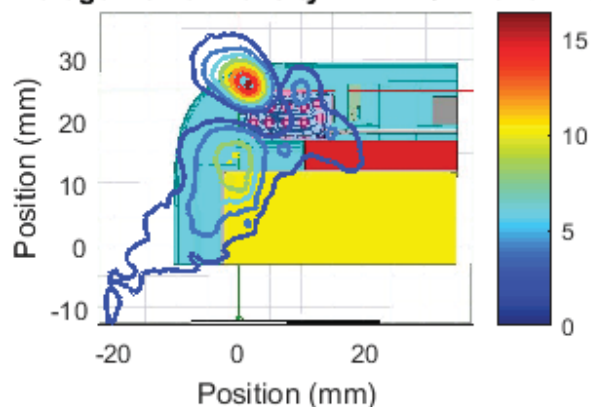
B.2 Right module Cut1 “Front of Device”



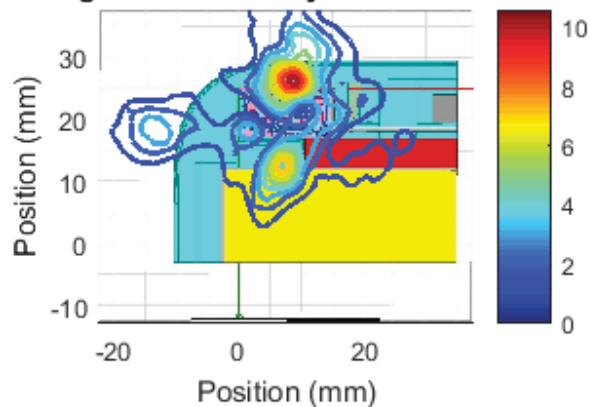
Right Module , Channel 1, front Cut
Sector 2 Near Field Pattern
Average Power Density: 7.55 W/m² over 4 cm²



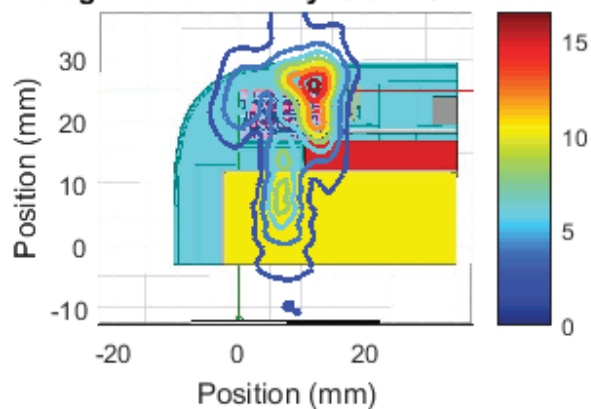
Right Module , Channel 1, front Cut
Sector 3 Near Field Pattern
Average Power Density: 4.47 W/m² over 4 cm²



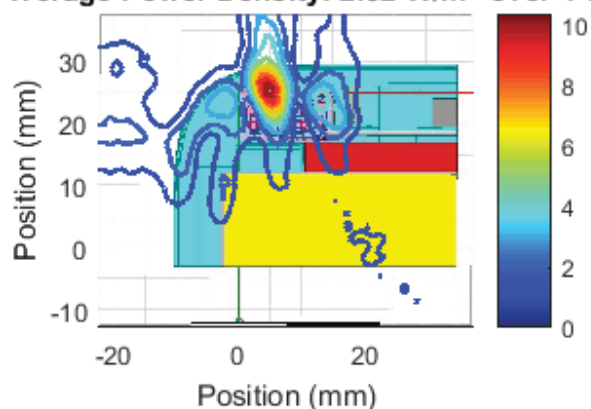
Right Module , Channel 1, front Cut
Sector 4 Near Field Pattern
Average Power Density: 2.88 W/m² over 4 cm²



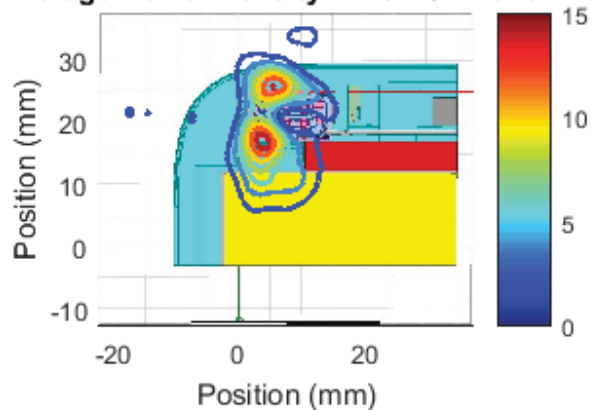
Right Module , Channel 1, front Cut
Sector 5 Near Field Pattern
Average Power Density: 5.91 W/m² over 4 cm²



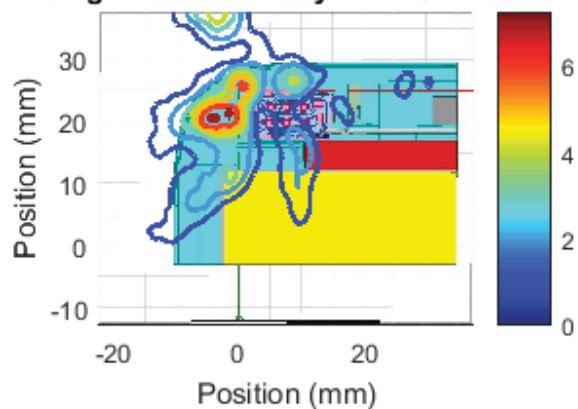
Right Module , Channel 1, front Cut
Sector 6 Near Field Pattern
Average Power Density: 2.52 W/m² over 4 cm²



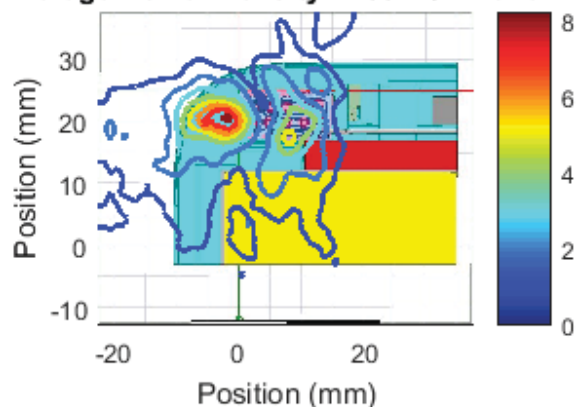
Right Module , Channel 1, front Cut
Sector 7 Near Field Pattern
Average Power Density: 4.29 W/m² over 4 cm²



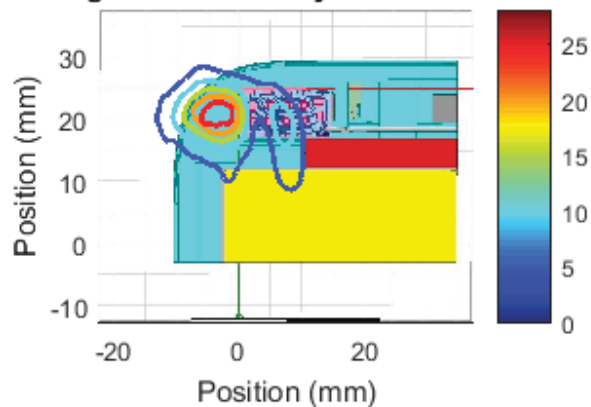
Right Module , Channel 1, front Cut
Sector 8 Near Field Pattern
Average Power Density: 2.4 W/m² over 4 cm²

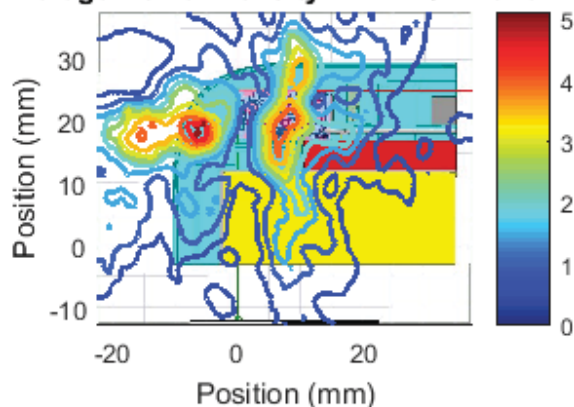
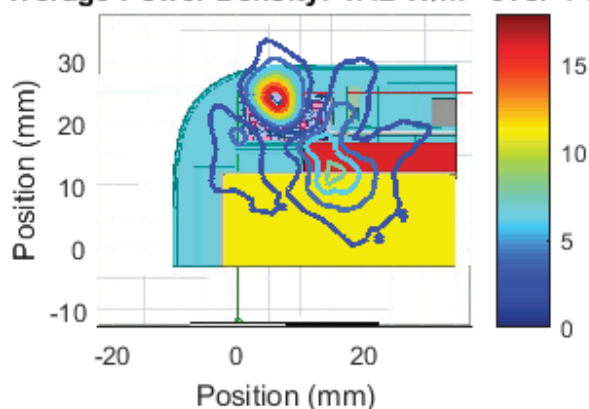
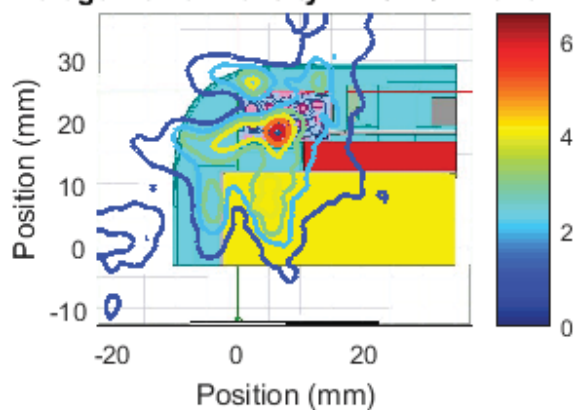


Right Module , Channel 1, front Cut
Sector 9 Near Field Pattern
Average Power Density: 2.83 W/m² over 4 cm²

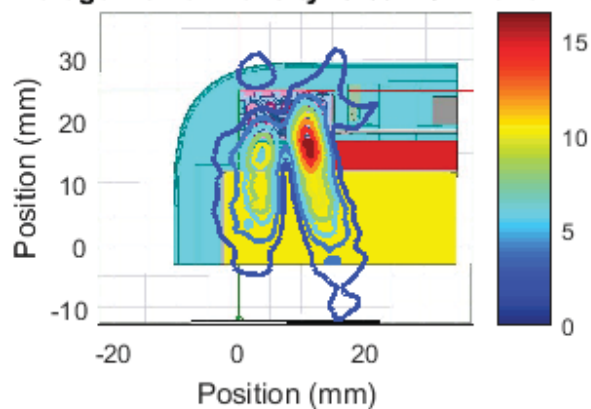


Right Module , Channel 1, front Cut
Sector 10 Near Field Pattern
Average Power Density: 8.6 W/m² over 4 cm²

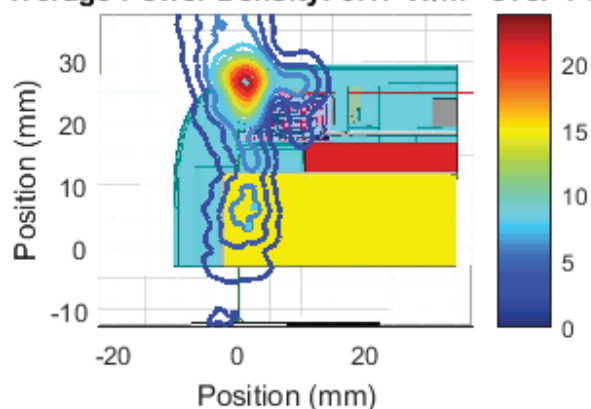


Right Module , Channel 1, front Cut**Sector 11 Near Field Pattern****Average Power Density: 2.17 W/m² over 4 cm²****Right Module , Channel 1, front Cut****Sector 12 Near Field Pattern****Average Power Density: 4.42 W/m² over 4 cm²****Right Module , Channel 1, front Cut****Sector 13 Near Field Pattern****Average Power Density: 2.78 W/m² over 4 cm²**

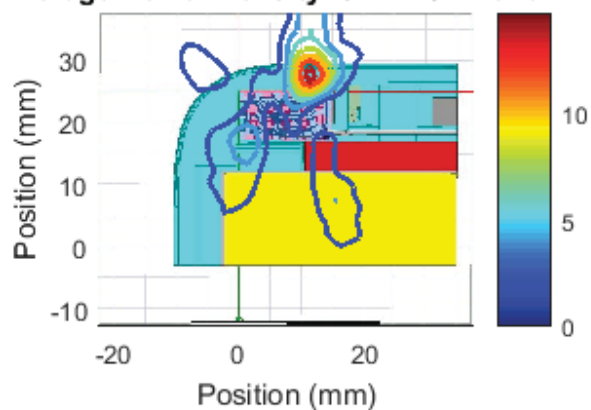
Right Module , Channel 1, front Cut
Sector 14 Near Field Pattern
Average Power Density: 5.69 W/m² over 4 cm²



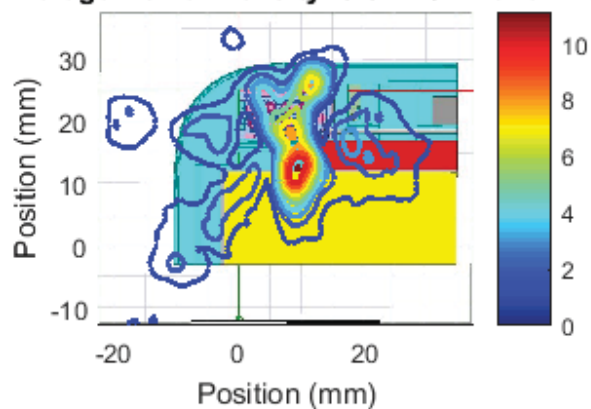
Right Module , Channel 1, front Cut
Sector 15 Near Field Pattern
Average Power Density: 6.17 W/m² over 4 cm²



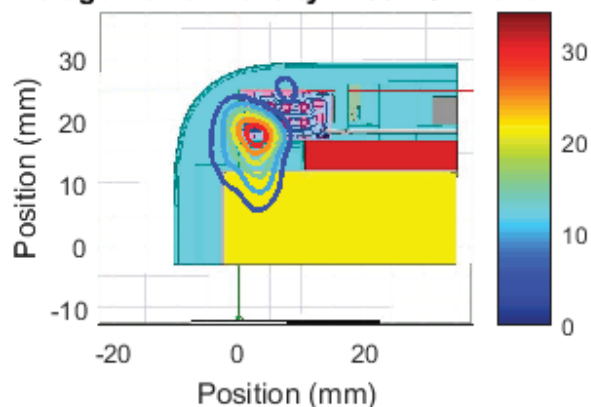
Right Module , Channel 1, front Cut
Sector 16 Near Field Pattern
Average Power Density: 3.22 W/m² over 4 cm²



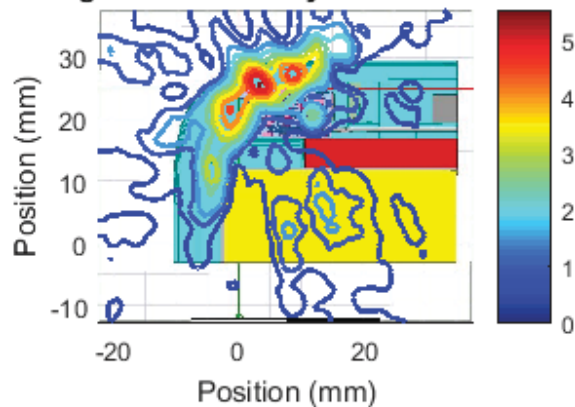
Right Module , Channel 1, front Cut
Sector 17 Near Field Pattern
Average Power Density: 3.31 W/m² over 4 cm²



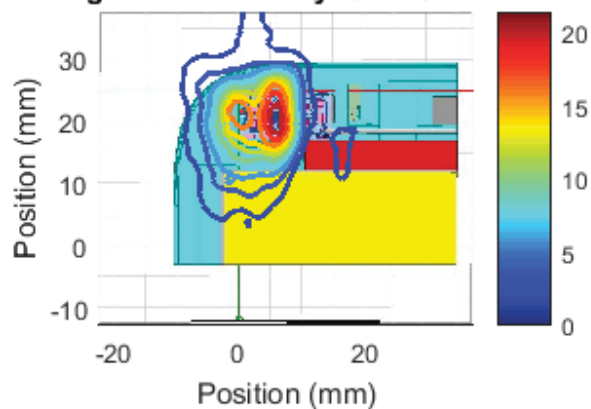
Right Module , Channel 1, front Cut
Sector 18 Near Field Pattern
Average Power Density: 7.33 W/m² over 4 cm²



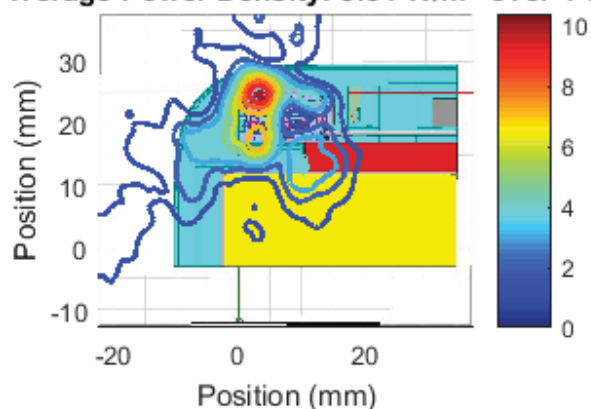
Right Module , Channel 1, front Cut
Sector 19 Near Field Pattern
Average Power Density: 2.14 W/m² over 4 cm²



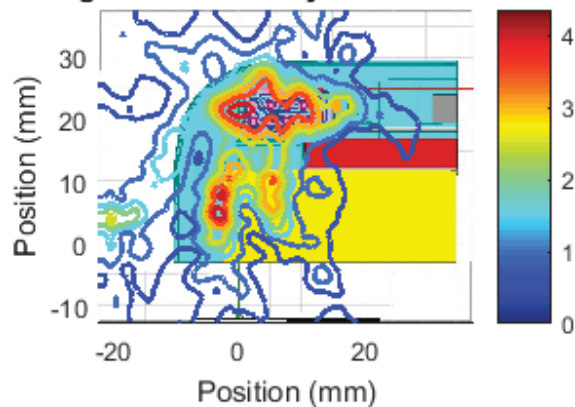
Right Module , Channel 1, front Cut
Sector 20 Near Field Pattern
Average Power Density: 8.2 W/m² over 4 cm²



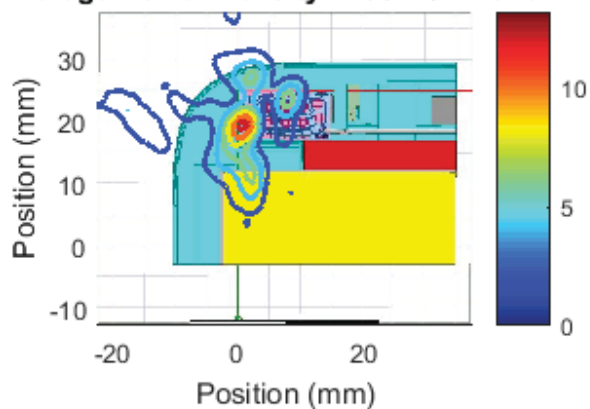
Right Module , Channel 1, front Cut
Sector 21 Near Field Pattern
Average Power Density: 3.54 W/m² over 4 cm²



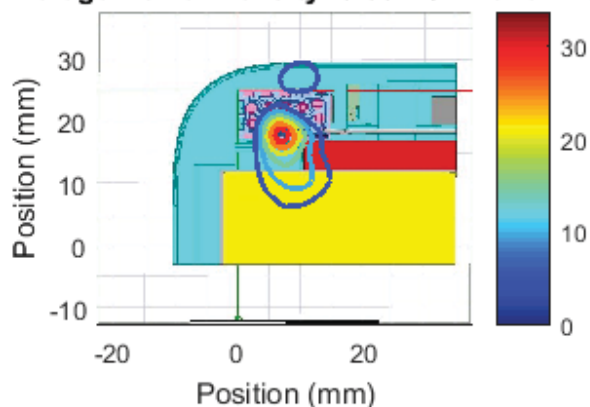
Right Module , Channel 1, front Cut
Sector 22 Near Field Pattern
Average Power Density: 2.42 W/m² over 4 cm²



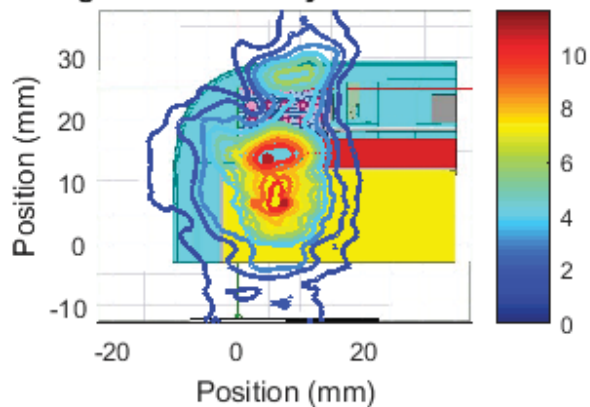
Right Module , Channel 1, front Cut
Sector 23 Near Field Pattern
Average Power Density: 2.93 W/m² over 4 cm²



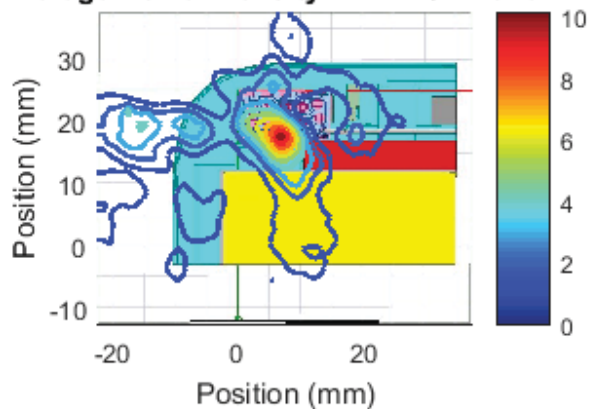
Right Module , Channel 1, front Cut
Sector 24 Near Field Pattern
Average Power Density: 6.06 W/m² over 4 cm²



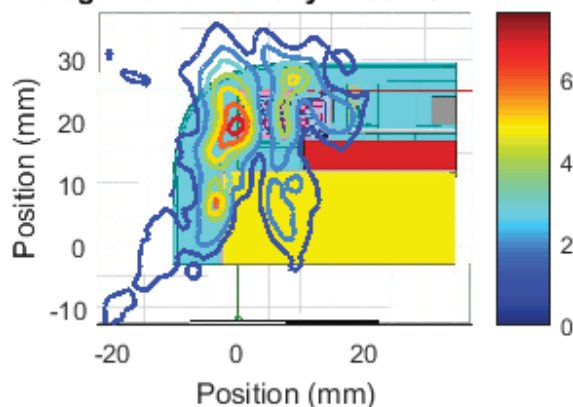
Right Module , Channel 1, front Cut
Sector 25 Near Field Pattern
Average Power Density: 5.79 W/m² over 4 cm²



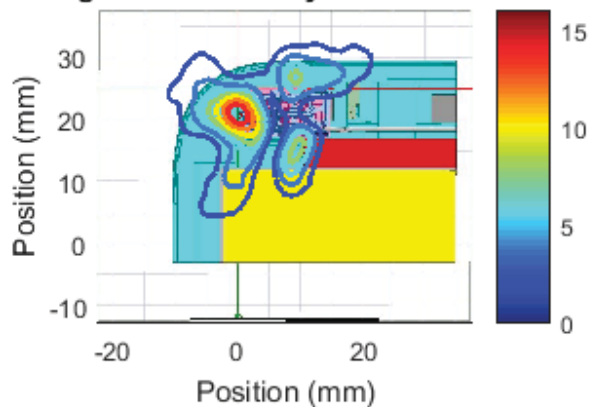
Right Module , Channel 1, front Cut
Sector 26 Near Field Pattern
Average Power Density: 2.22 W/m² over 4 cm²



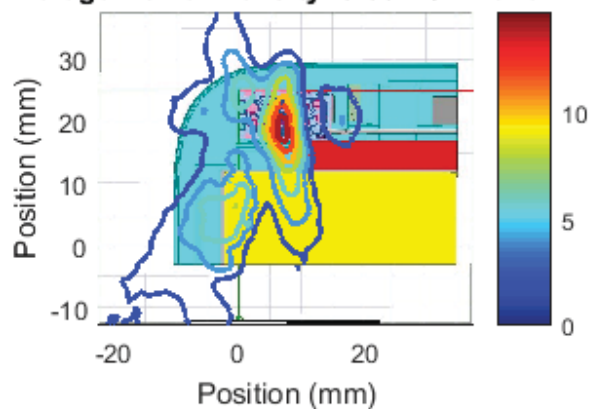
Right Module , Channel 1, front Cut
Sector 27 Near Field Pattern
Average Power Density: 2.95 W/m² over 4 cm²



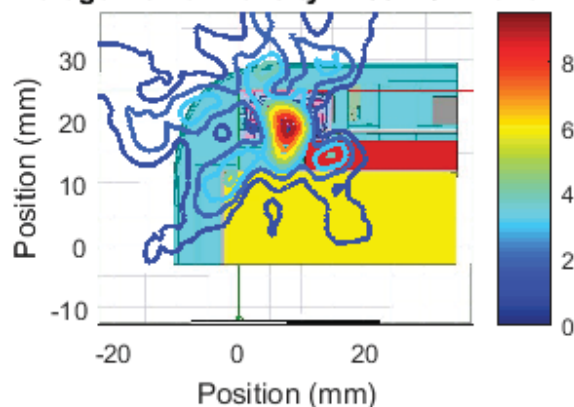
Right Module , Channel 1, front Cut
Sector 28 Near Field Pattern
Average Power Density: 4.55 W/m² over 4 cm²



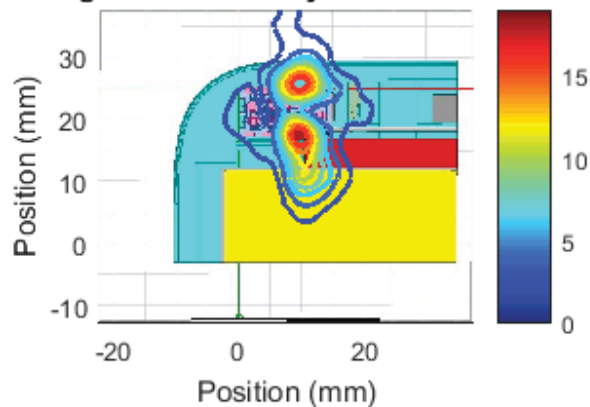
Right Module , Channel 1, front Cut
Sector 29 Near Field Pattern
Average Power Density: 5.06 W/m² over 4 cm²



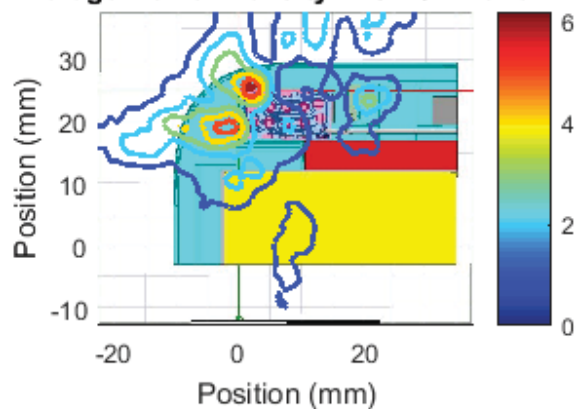
Right Module , Channel 1, front Cut
Sector 30 Near Field Pattern
Average Power Density: 2.83 W/m² over 4 cm²



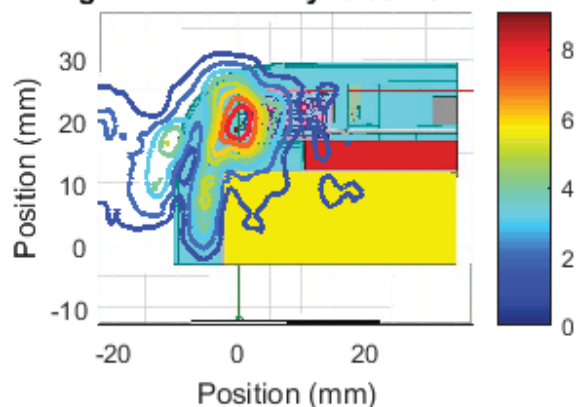
Right Module , Channel 1, front Cut
Sector 31 Near Field Pattern
Average Power Density: 5.24 W/m² over 4 cm²



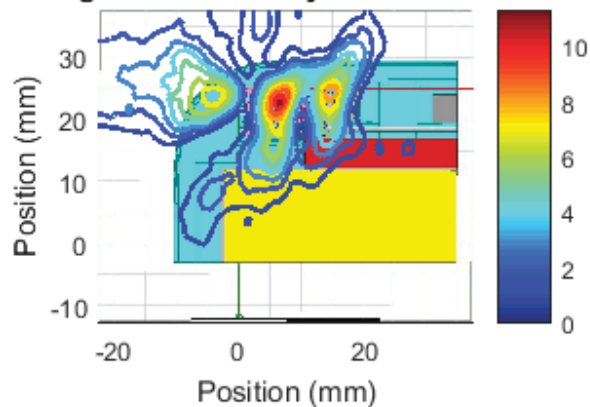
Right Module , Channel 2, front Cut
Sector 0 Near Field Pattern
Average Power Density: 2.3 W/m² over 4 cm²



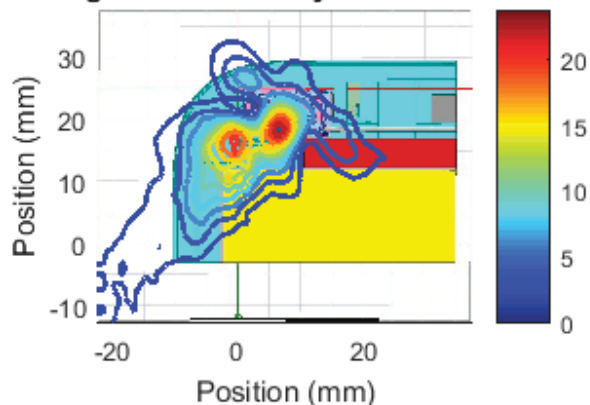
Right Module , Channel 2, front Cut
Sector 1 Near Field Pattern
Average Power Density: 3.53 W/m² over 4 cm²



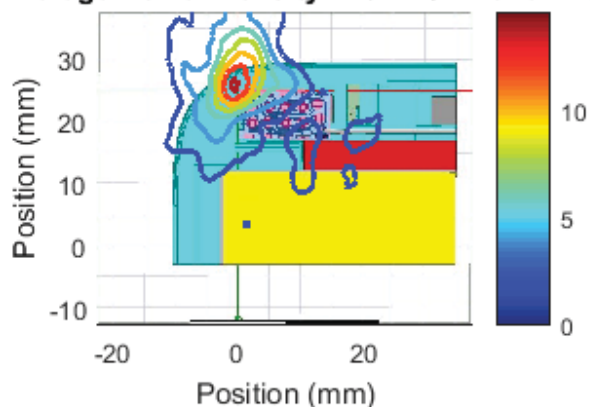
Right Module , Channel 2, front Cut
Sector 2 Near Field Pattern
Average Power Density: 3.51 W/m² over 4 cm²



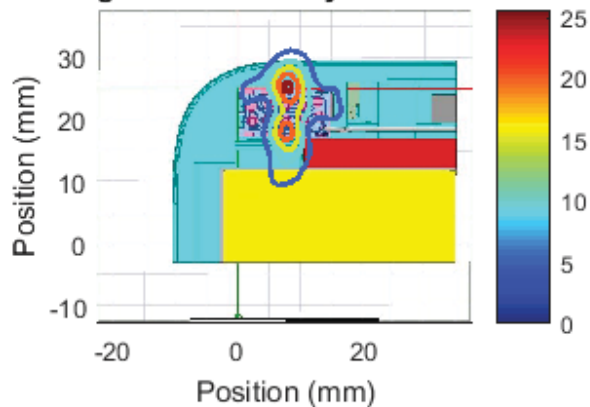
Right Module , Channel 2, front Cut
Sector 3 Near Field Pattern
Average Power Density: 8.1 W/m² over 4 cm²



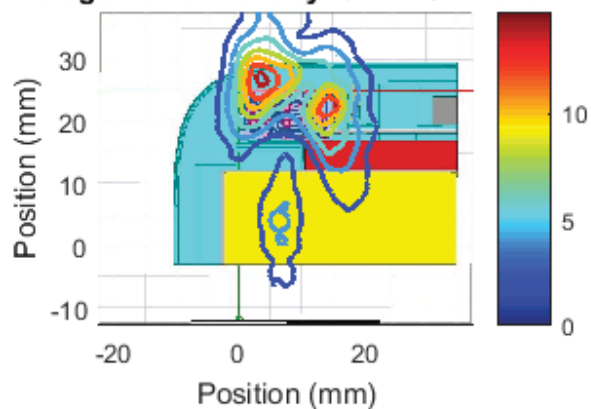
Right Module , Channel 2, front Cut
Sector 4 Near Field Pattern
Average Power Density: 4.92 W/m² over 4 cm²



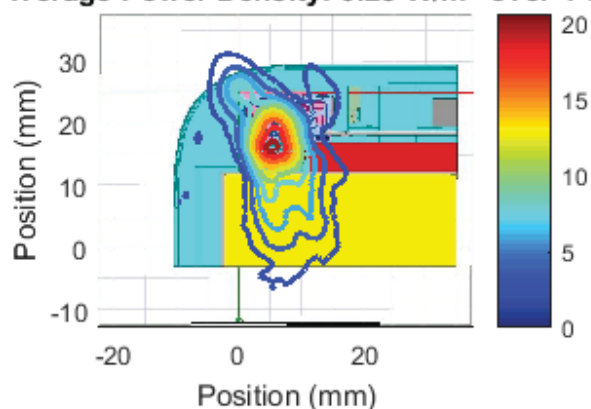
Right Module , Channel 2, front Cut
Sector 5 Near Field Pattern
Average Power Density: 6 W/m² over 4 cm²



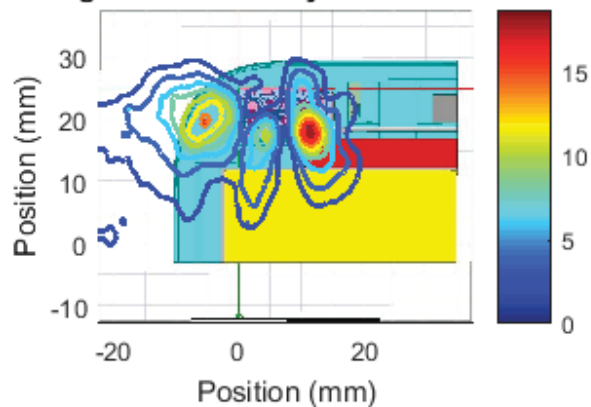
Right Module , Channel 2, front Cut
Sector 6 Near Field Pattern
Average Power Density: 6.22 W/m² over 4 cm²



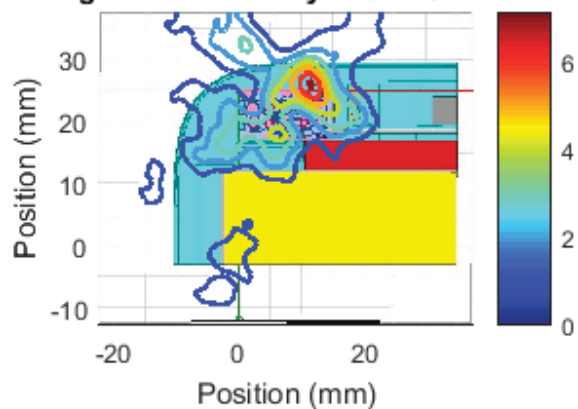
Right Module , Channel 2, front Cut
Sector 7 Near Field Pattern
Average Power Density: 6.25 W/m² over 4 cm²



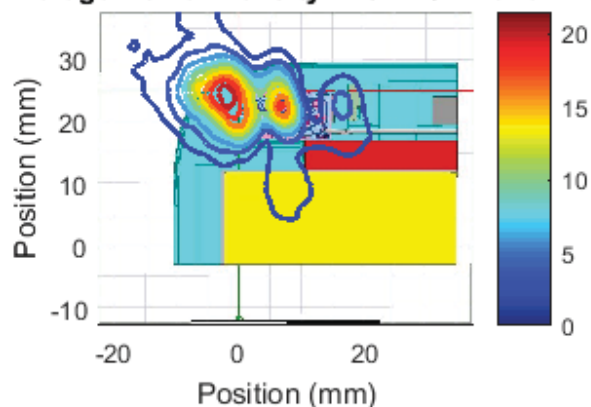
Right Module , Channel 2, front Cut
Sector 8 Near Field Pattern
Average Power Density: 5.46 W/m² over 4 cm²



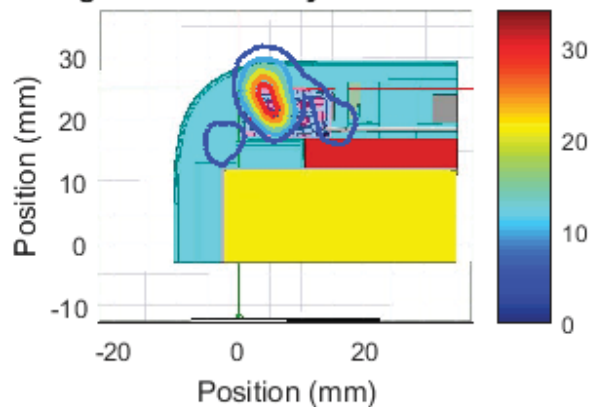
Right Module , Channel 2, front Cut
Sector 9 Near Field Pattern
Average Power Density: 2.59 W/m² over 4 cm²



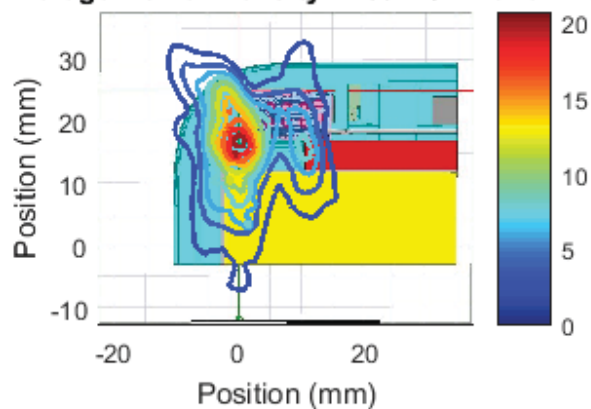
Right Module , Channel 2, front Cut
Sector 10 Near Field Pattern
Average Power Density: 7.52 W/m² over 4 cm²



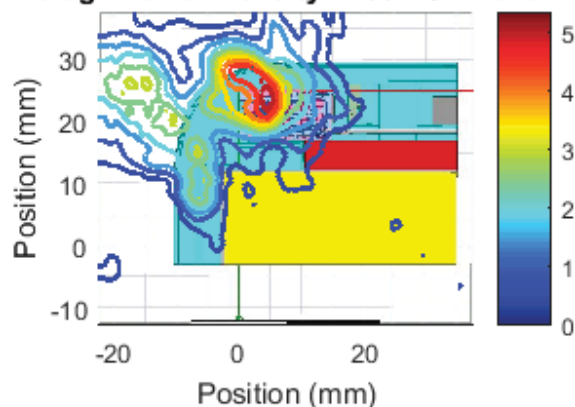
Right Module , Channel 2, front Cut
Sector 11 Near Field Pattern
Average Power Density: 7.22 W/m² over 4 cm²



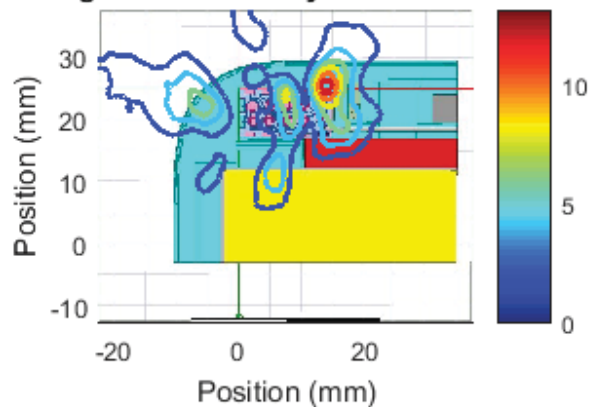
Right Module , Channel 2, front Cut
Sector 12 Near Field Pattern
Average Power Density: 7.59 W/m² over 4 cm²



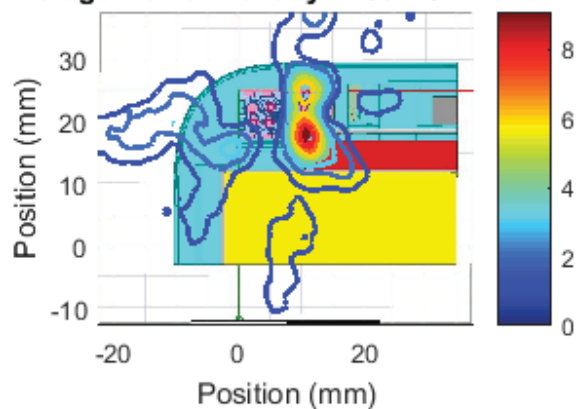
Right Module , Channel 2, front Cut
Sector 13 Near Field Pattern
Average Power Density: 2.36 W/m² over 4 cm²



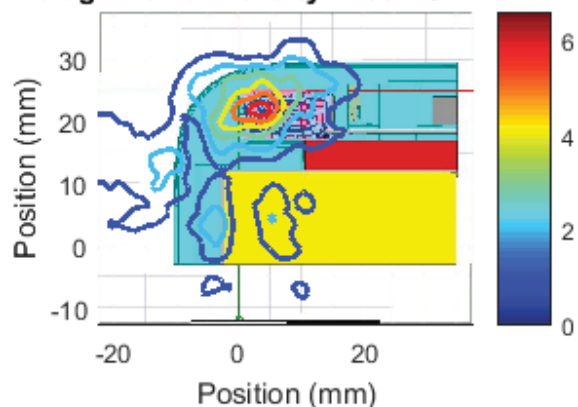
Right Module , Channel 2, front Cut
Sector 14 Near Field Pattern
Average Power Density: 3.31 W/m² over 4 cm²



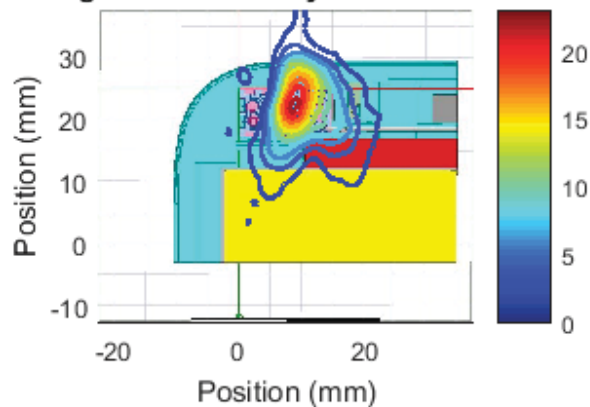
Right Module , Channel 2, front Cut
Sector 15 Near Field Pattern
Average Power Density: 2.09 W/m² over 4 cm²



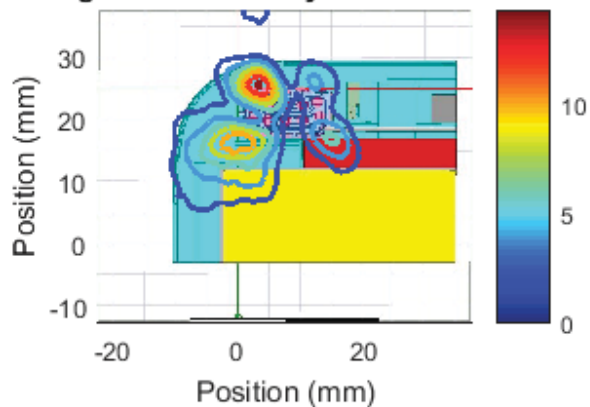
Right Module , Channel 2, front Cut
Sector 16 Near Field Pattern
Average Power Density: 2.33 W/m² over 4 cm²



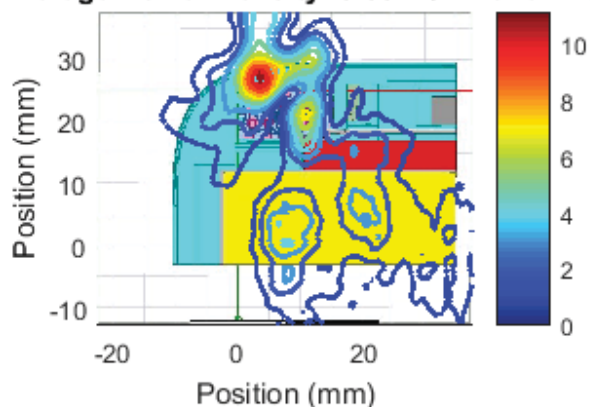
Right Module , Channel 2, front Cut
Sector 17 Near Field Pattern
Average Power Density: 6.21 W/m² over 4 cm²



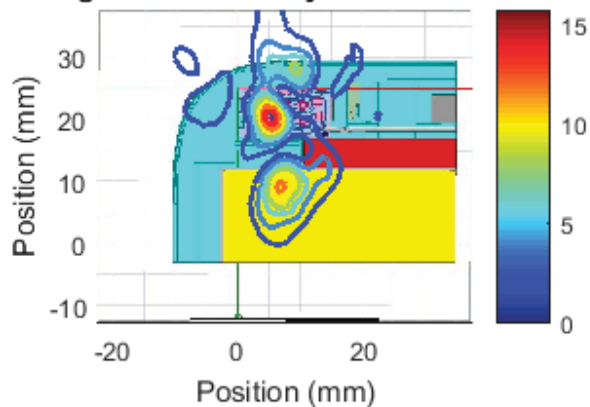
Right Module , Channel 2, front Cut
Sector 18 Near Field Pattern
Average Power Density: 4.36 W/m² over 4 cm²



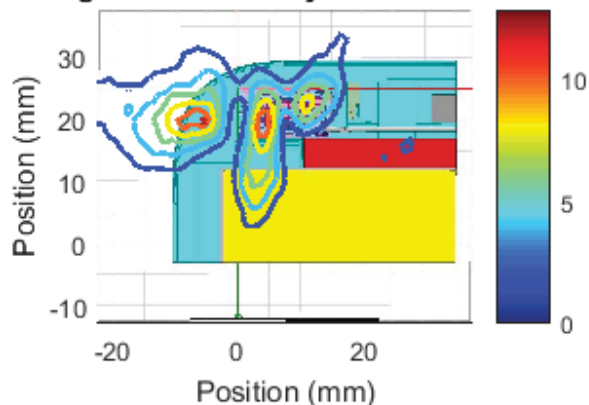
Right Module , Channel 2, front Cut
Sector 19 Near Field Pattern
Average Power Density: 3.33 W/m² over 4 cm²



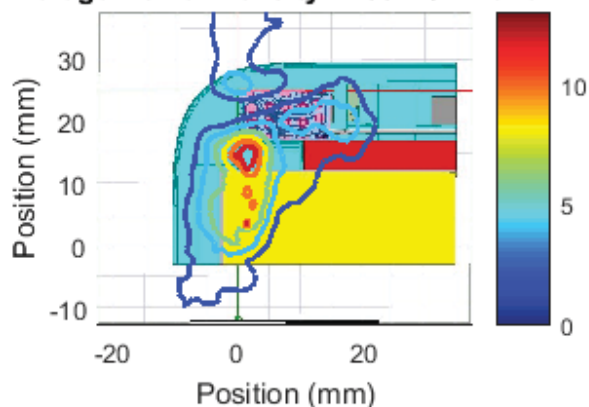
Right Module , Channel 2, front Cut
Sector 20 Near Field Pattern
Average Power Density: 3.38 W/m² over 4 cm²



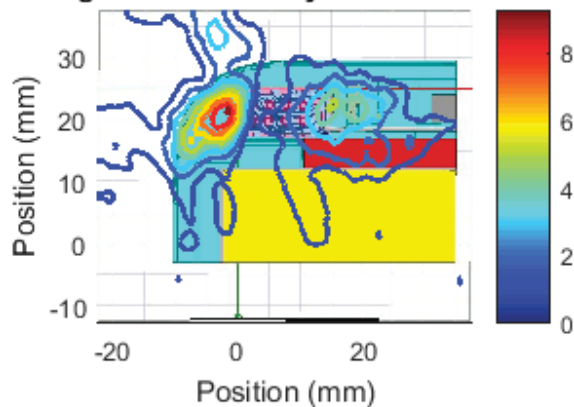
Right Module , Channel 2, front Cut
Sector 21 Near Field Pattern
Average Power Density: 4.43 W/m² over 4 cm²



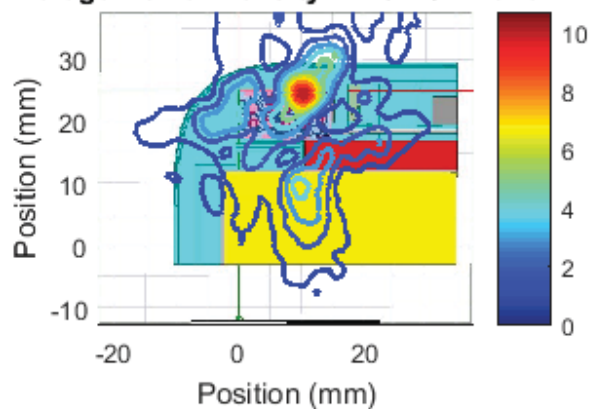
Right Module , Channel 2, front Cut
Sector 22 Near Field Pattern
Average Power Density: 4.85 W/m² over 4 cm²



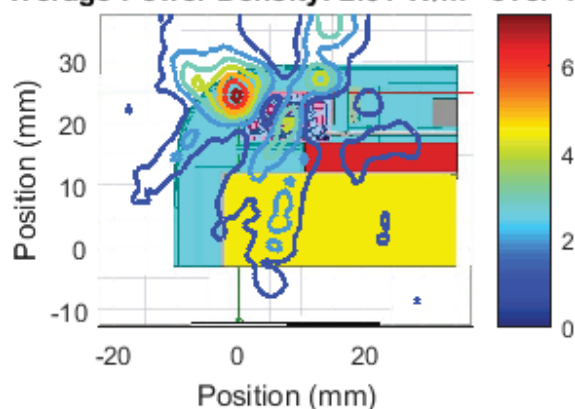
Right Module , Channel 2, front Cut
Sector 23 Near Field Pattern
Average Power Density: 2.39 W/m² over 4 cm²



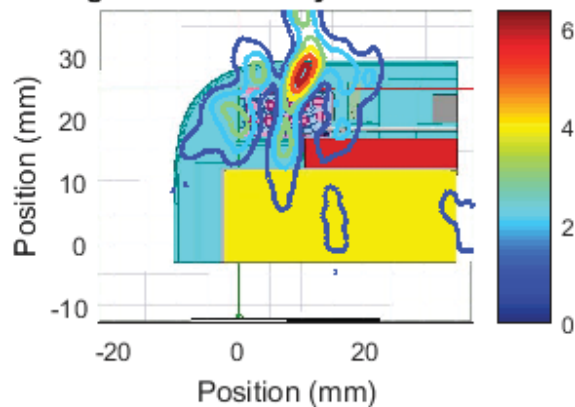
Right Module , Channel 2, front Cut
Sector 24 Near Field Pattern
Average Power Density: 2.78 W/m² over 4 cm²



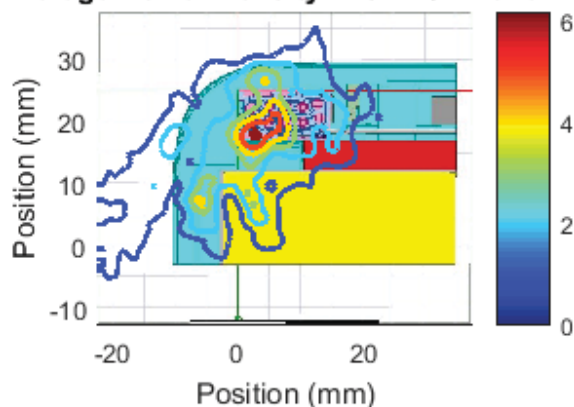
Right Module , Channel 2, front Cut
Sector 25 Near Field Pattern
Average Power Density: 2.31 W/m² over 4 cm²



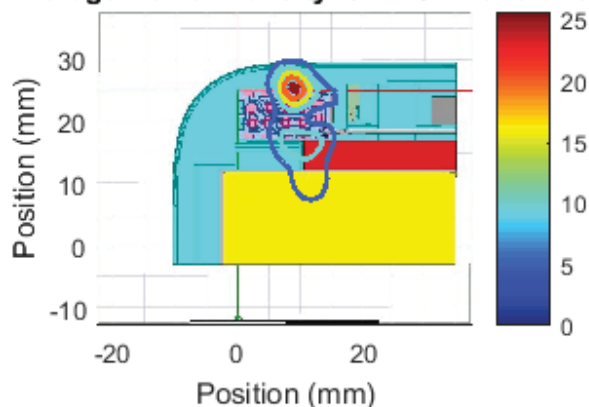
Right Module , Channel 2, front Cut
Sector 26 Near Field Pattern
Average Power Density: 1.9 W/m² over 4 cm²



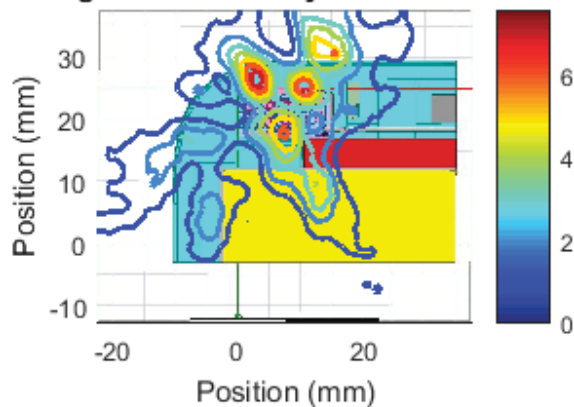
Right Module , Channel 2, front Cut
Sector 27 Near Field Pattern
Average Power Density: 2.52 W/m² over 4 cm²



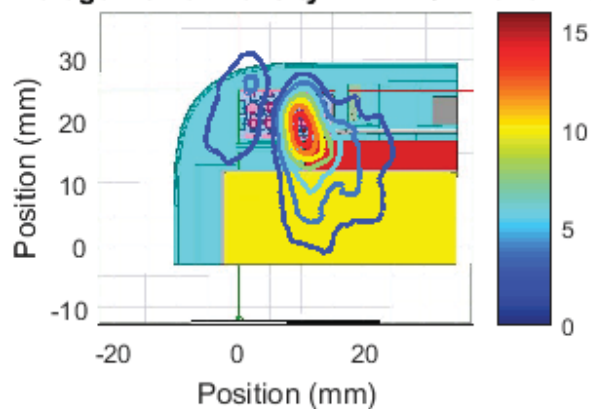
Right Module , Channel 2, front Cut
Sector 28 Near Field Pattern
Average Power Density: 5.4 W/m² over 4 cm²



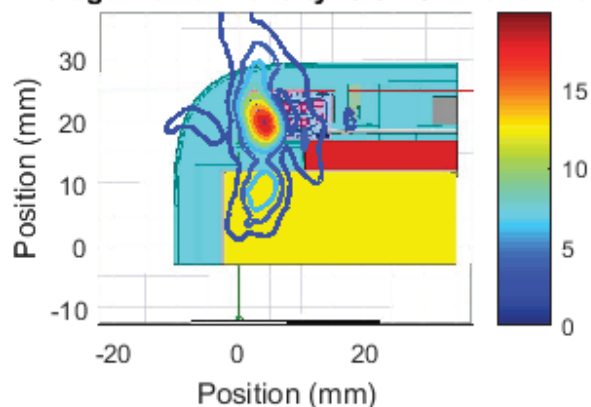
Right Module , Channel 2, front Cut
Sector 29 Near Field Pattern
Average Power Density: 3.08 W/m² over 4 cm²



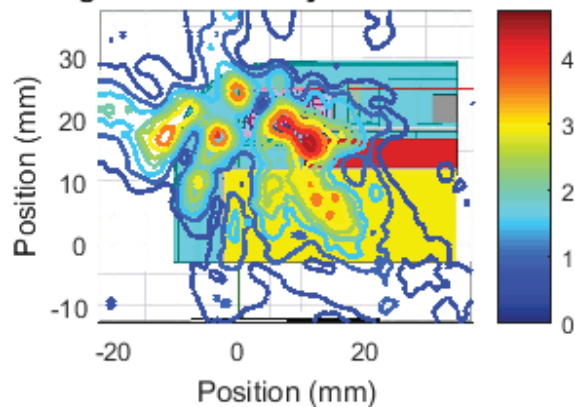
Right Module , Channel 2, front Cut
Sector 30 Near Field Pattern
Average Power Density: 4.72 W/m² over 4 cm²



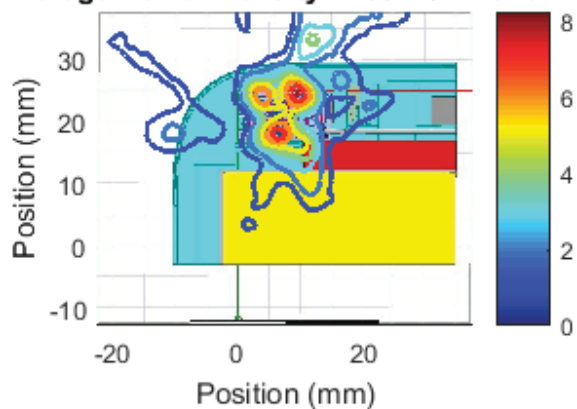
Right Module , Channel 2, front Cut
Sector 31 Near Field Pattern
Average Power Density: 3.8 W/m² over 4 cm²



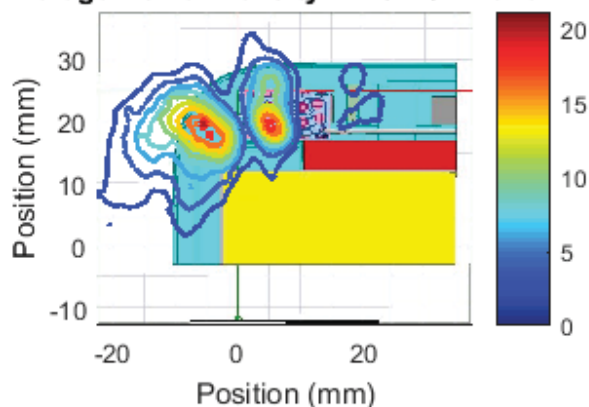
Right Module , Channel 3, front Cut
Sector 0 Near Field Pattern
Average Power Density: 2.23 W/m² over 4 cm²



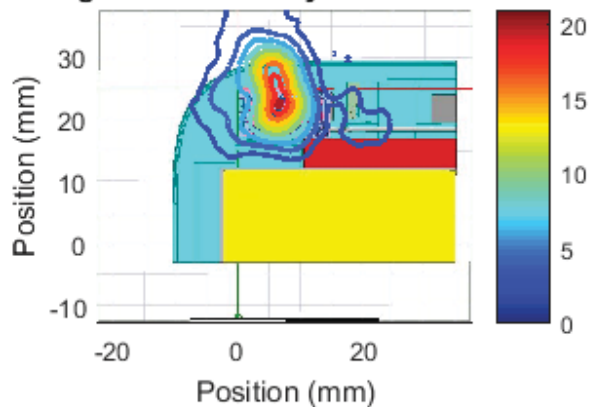
Right Module , Channel 3, front Cut
Sector 1 Near Field Pattern
Average Power Density: 2.65 W/m² over 4 cm²



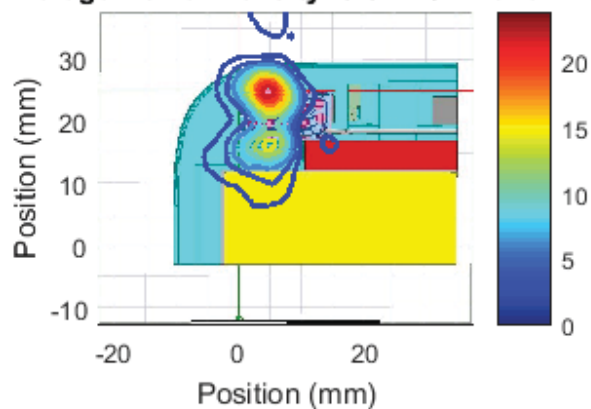
Right Module , Channel 3, front Cut
Sector 2 Near Field Pattern
Average Power Density: 7.28 W/m² over 4 cm²



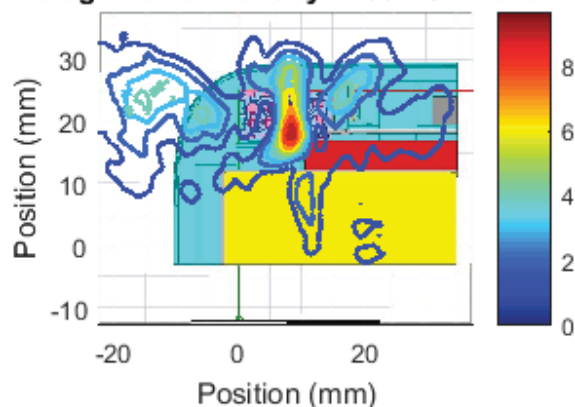
Right Module , Channel 3, front Cut
Sector 3 Near Field Pattern
Average Power Density: 6.49 W/m² over 4 cm²



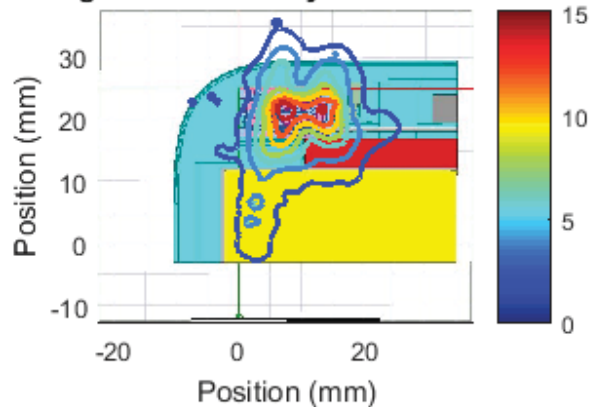
Right Module , Channel 3, front Cut
Sector 4 Near Field Pattern
Average Power Density: 5.32 W/m² over 4 cm²



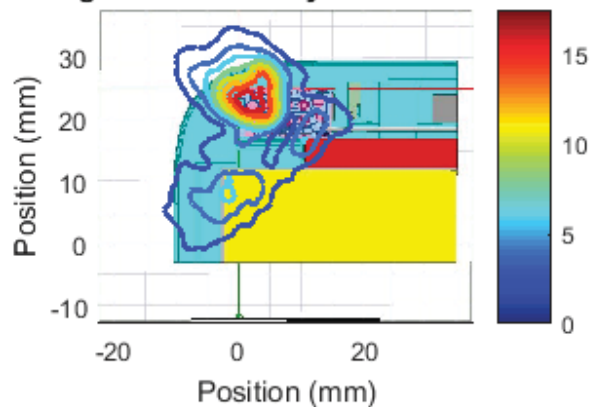
Right Module , Channel 3, front Cut
Sector 5 Near Field Pattern
Average Power Density: 2.38 W/m² over 4 cm²



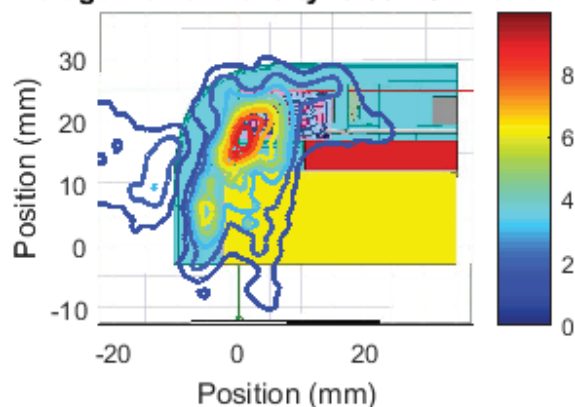
Right Module , Channel 3, front Cut
Sector 6 Near Field Pattern
Average Power Density: 6.02 W/m² over 4 cm²



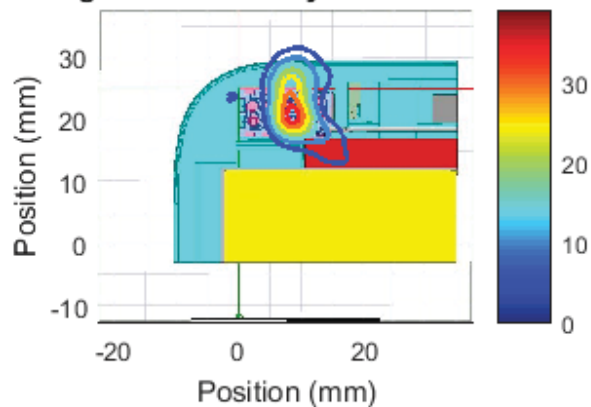
Right Module , Channel 3, front Cut
Sector 7 Near Field Pattern
Average Power Density: 5.35 W/m² over 4 cm²



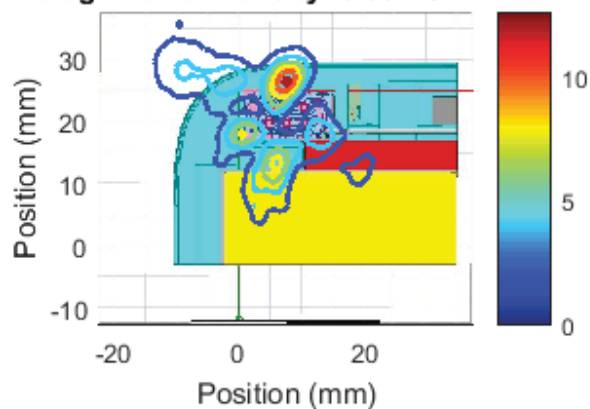
Right Module , Channel 3, front Cut
Sector 8 Near Field Pattern
Average Power Density: 3.58 W/m² over 4 cm²



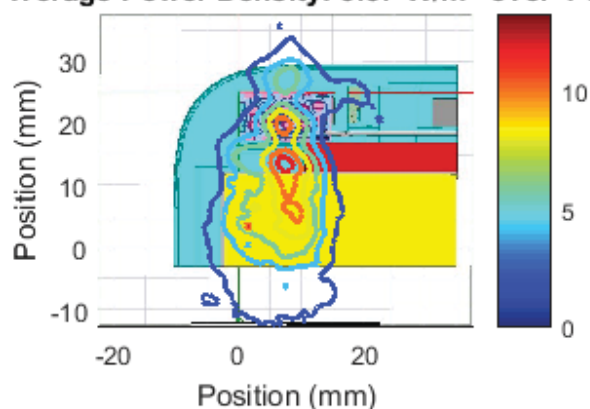
Right Module , Channel 3, front Cut
Sector 9 Near Field Pattern
Average Power Density: 7.49 W/m² over 4 cm²



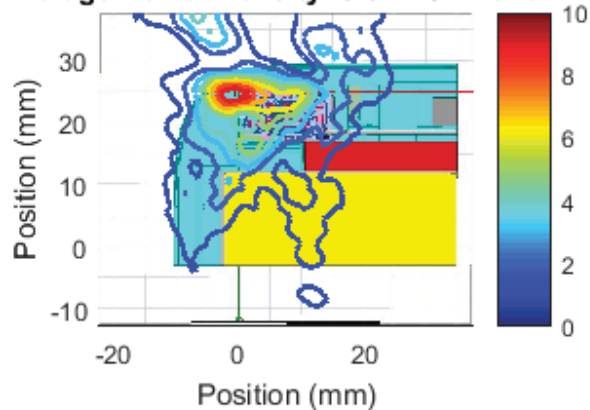
Right Module , Channel 3, front Cut
Sector 10 Near Field Pattern
Average Power Density: 3.53 W/m² over 4 cm²



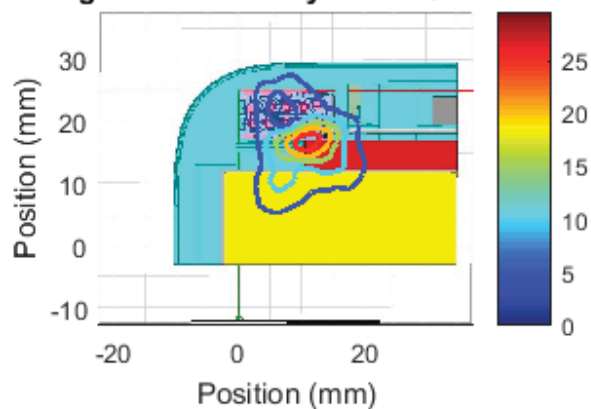
Right Module , Channel 3, front Cut
Sector 11 Near Field Pattern
Average Power Density: 5.87 W/m² over 4 cm²



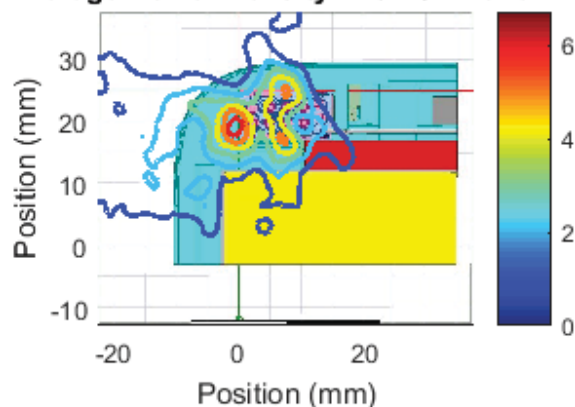
Right Module , Channel 3, front Cut
Sector 12 Near Field Pattern
Average Power Density: 3.51 W/m² over 4 cm²



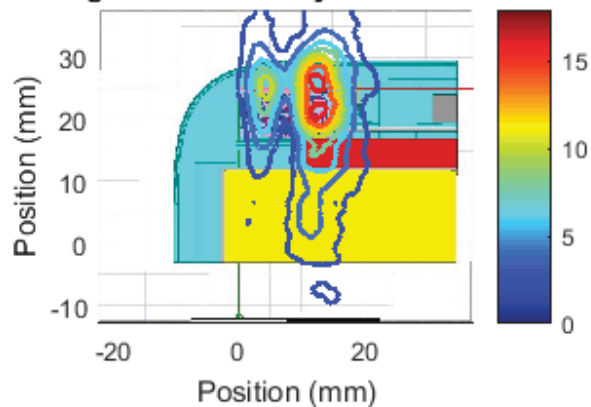
Right Module , Channel 3, front Cut
Sector 13 Near Field Pattern
Average Power Density: 7.77 W/m² over 4 cm²



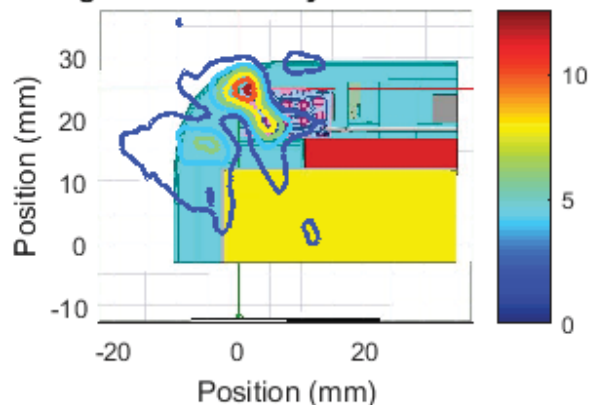
Right Module , Channel 3, front Cut
Sector 14 Near Field Pattern
Average Power Density: 2.6 W/m² over 4 cm²



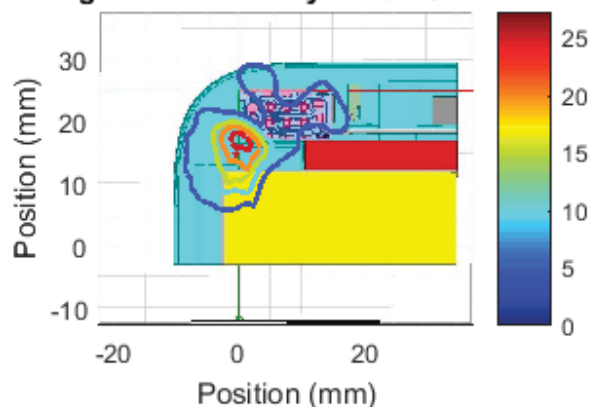
Right Module , Channel 3, front Cut
Sector 15 Near Field Pattern
Average Power Density: 6.5 W/m² over 4 cm²



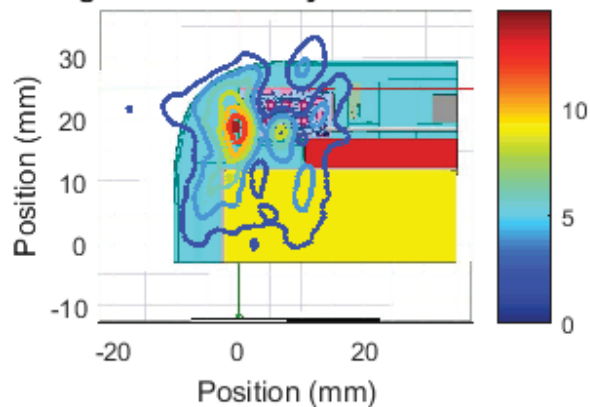
Right Module , Channel 3, front Cut
Sector 16 Near Field Pattern
Average Power Density: 3.51 W/m² over 4 cm²



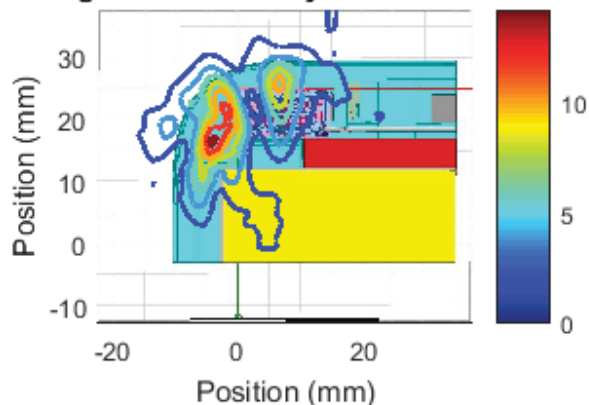
Right Module , Channel 3, front Cut
Sector 17 Near Field Pattern
Average Power Density: 7.63 W/m² over 4 cm²



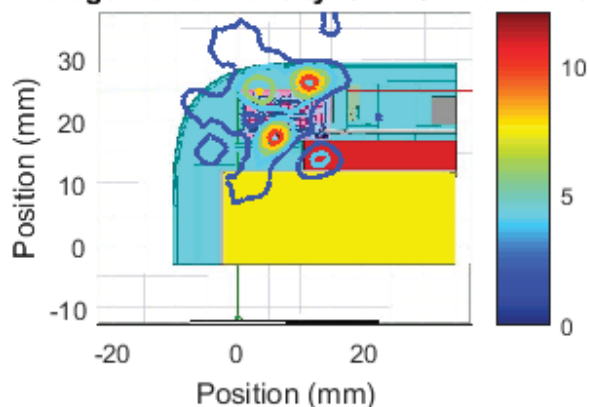
Right Module , Channel 3, front Cut
Sector 18 Near Field Pattern
Average Power Density: 4.65 W/m² over 4 cm²



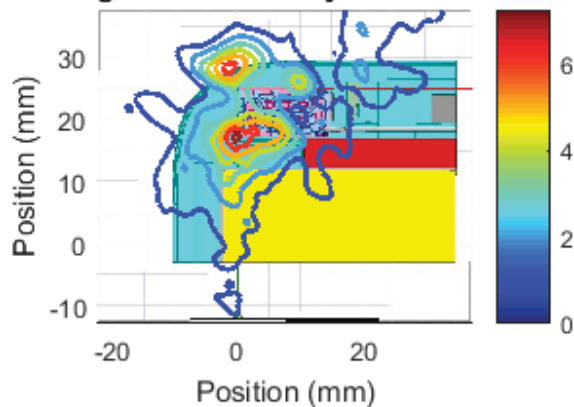
Right Module , Channel 3, front Cut
Sector 19 Near Field Pattern
Average Power Density: 4.96 W/m² over 4 cm²

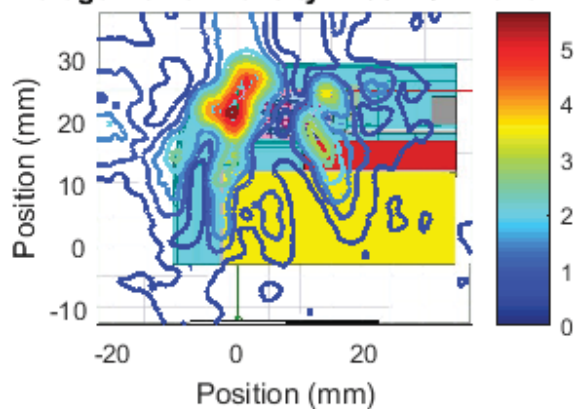
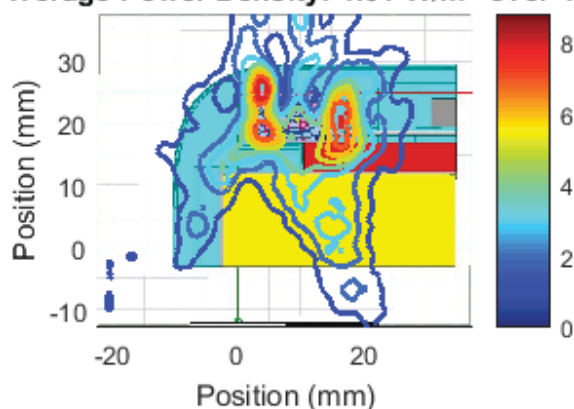
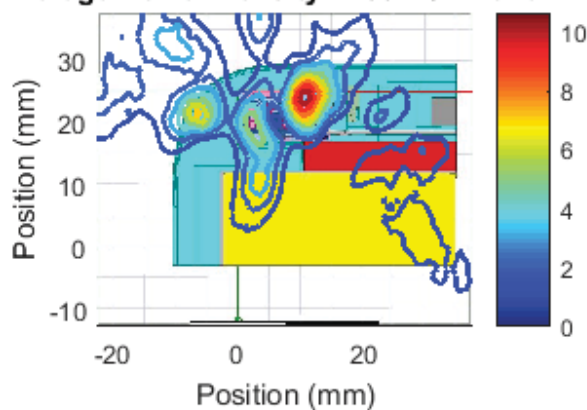


Right Module , Channel 3, front Cut
Sector 20 Near Field Pattern
Average Power Density: 3.4 W/m² over 4 cm²

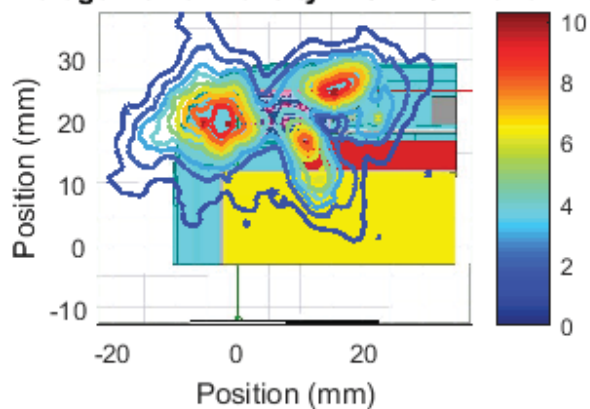


Right Module , Channel 3, front Cut
Sector 21 Near Field Pattern
Average Power Density: 3 W/m² over 4 cm²

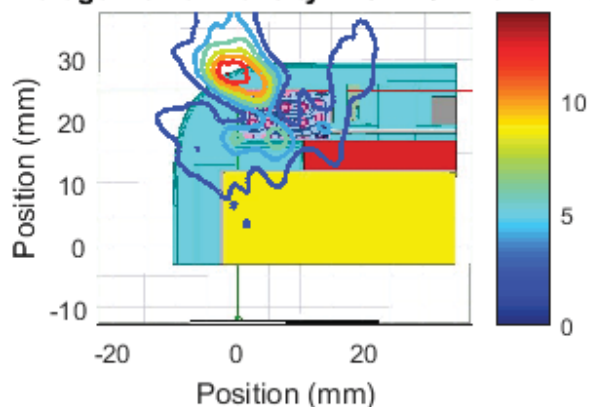


Right Module , Channel 3, front Cut**Sector 22 Near Field Pattern****Average Power Density: 1.98 W/m² over 4 cm²****Right Module , Channel 3, front Cut****Sector 23 Near Field Pattern****Average Power Density: 4.01 W/m² over 4 cm²****Right Module , Channel 3, front Cut****Sector 24 Near Field Pattern****Average Power Density: 2.56 W/m² over 4 cm²**

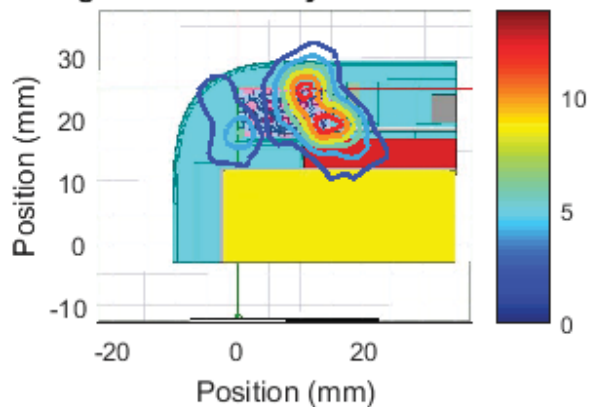
Right Module , Channel 3, front Cut
Sector 25 Near Field Pattern
Average Power Density: 4.34 W/m² over 4 cm²



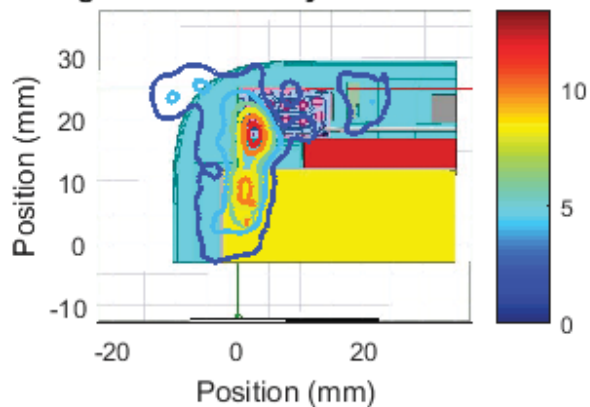
Right Module , Channel 3, front Cut
Sector 26 Near Field Pattern
Average Power Density: 4.31 W/m² over 4 cm²



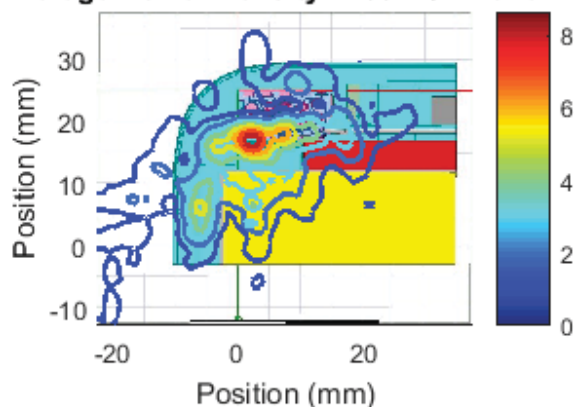
Right Module , Channel 3, front Cut
Sector 27 Near Field Pattern
Average Power Density: 4.23 W/m² over 4 cm²



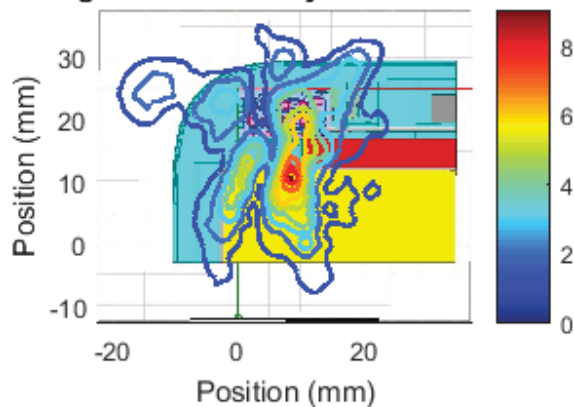
Right Module , Channel 3, front Cut
Sector 28 Near Field Pattern
Average Power Density: 3.93 W/m² over 4 cm²



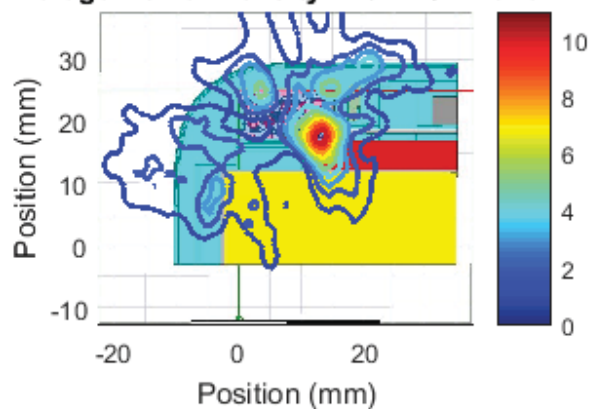
Right Module , Channel 3, front Cut
Sector 29 Near Field Pattern
Average Power Density: 2.99 W/m² over 4 cm²



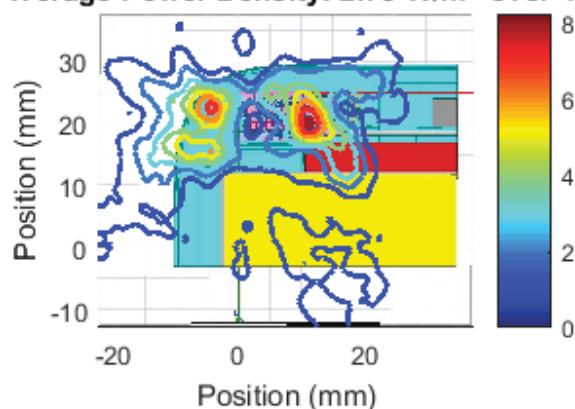
Right Module , Channel 3, front Cut
Sector 30 Near Field Pattern
Average Power Density: 3.37 W/m² over 4 cm²



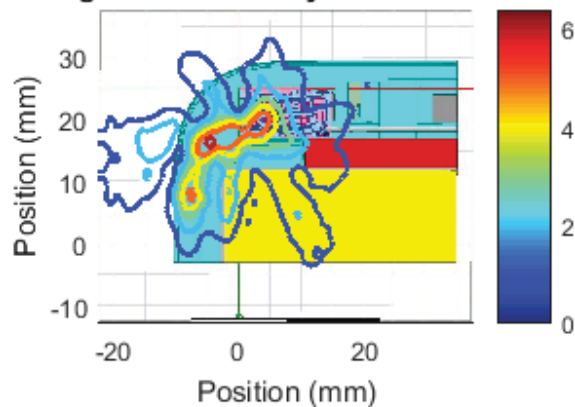
Right Module , Channel 3, front Cut
Sector 31 Near Field Pattern
Average Power Density: 2.92 W/m² over 4 cm²



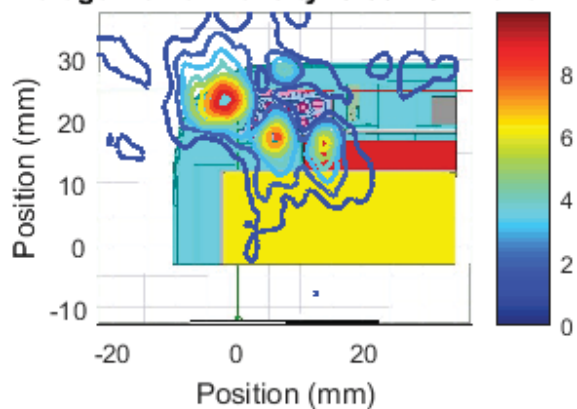
Right Module , Channel 4, front Cut
Sector 0 Near Field Pattern
Average Power Density: 2.78 W/m² over 4 cm²



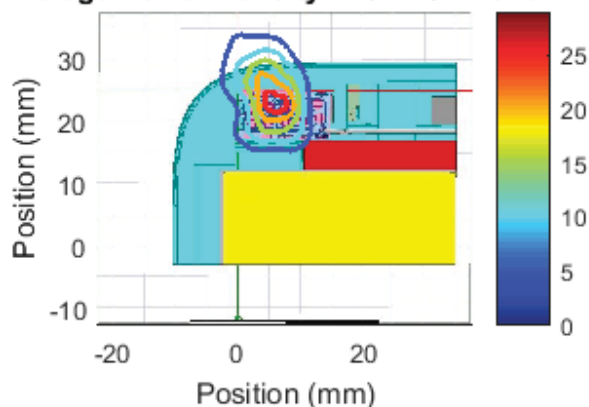
Right Module , Channel 4, front Cut
Sector 1 Near Field Pattern
Average Power Density: 2.45 W/m² over 4 cm²



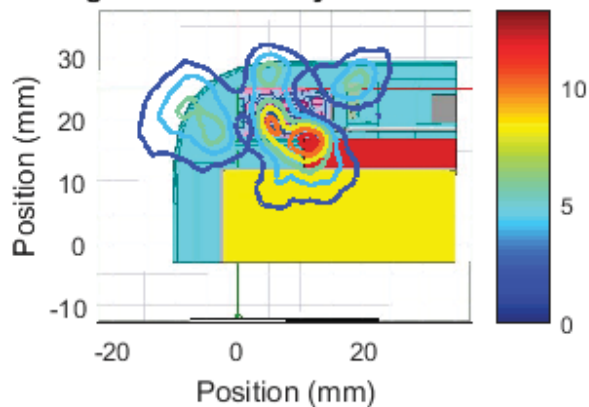
Right Module , Channel 4, front Cut
Sector 2 Near Field Pattern
Average Power Density: 3.06 W/m² over 4 cm²



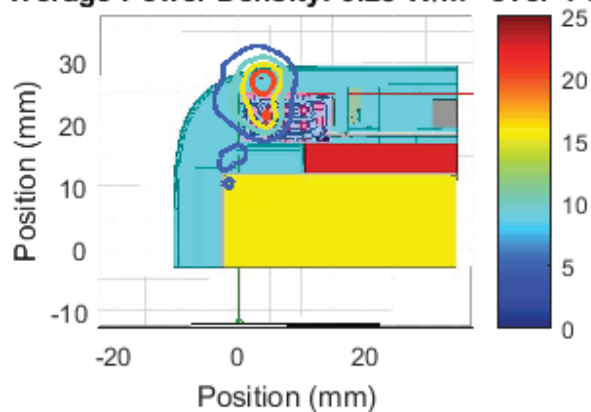
Right Module , Channel 4, front Cut
Sector 3 Near Field Pattern
Average Power Density: 7.84 W/m² over 4 cm²



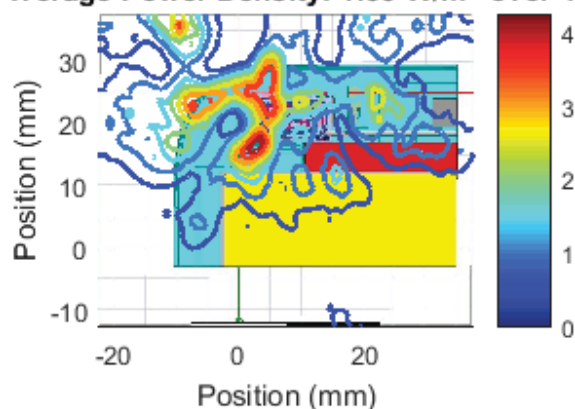
Right Module , Channel 4, front Cut
Sector 4 Near Field Pattern
Average Power Density: 4.3 W/m² over 4 cm²



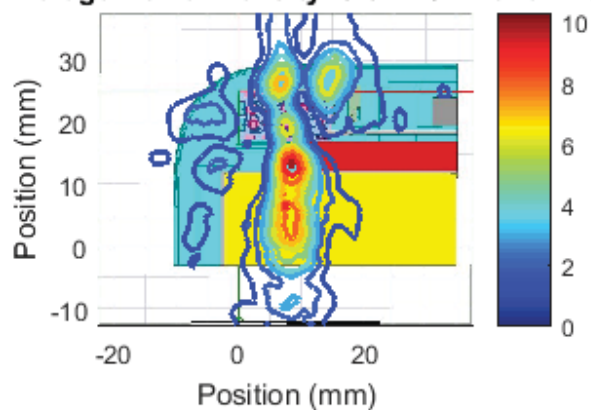
Right Module , Channel 4, front Cut
Sector 5 Near Field Pattern
Average Power Density: 6.25 W/m² over 4 cm²

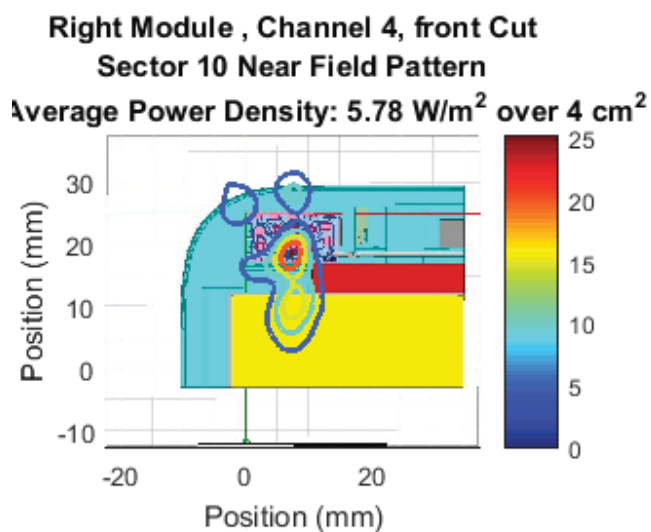
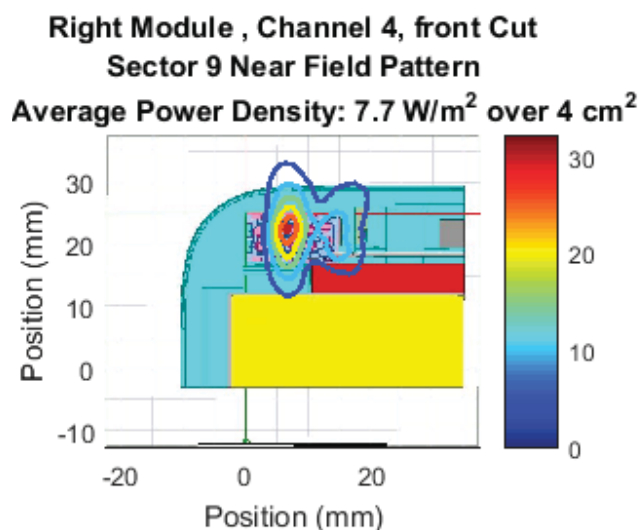
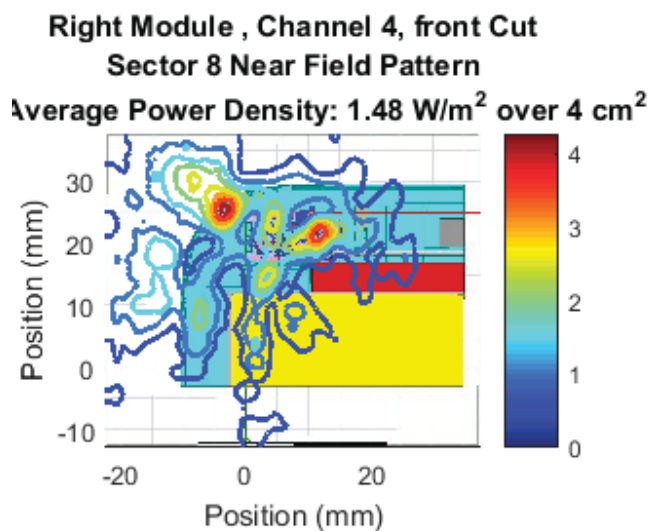


Right Module , Channel 4, front Cut
Sector 6 Near Field Pattern
Average Power Density: 1.83 W/m² over 4 cm²

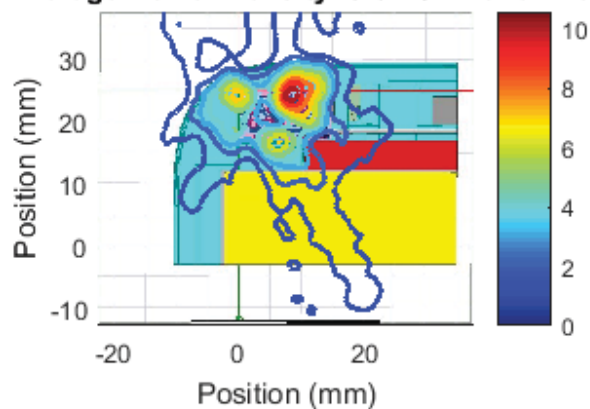


Right Module , Channel 4, front Cut
Sector 7 Near Field Pattern
Average Power Density: 3.01 W/m² over 4 cm²

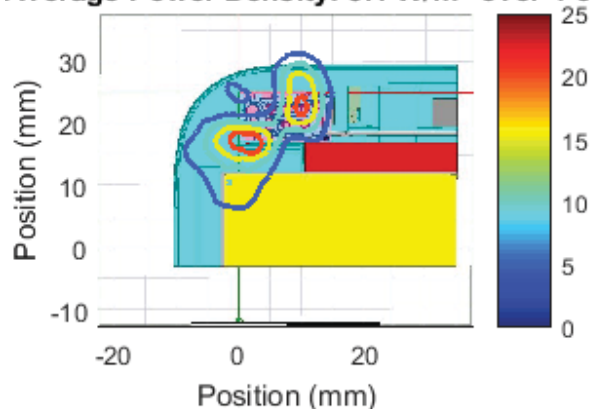




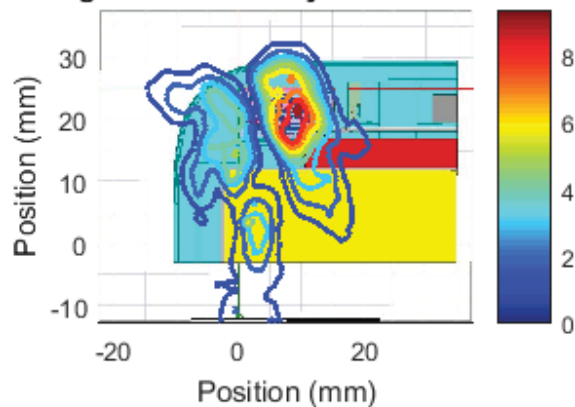
Right Module , Channel 4, front Cut
Sector 11 Near Field Pattern
Average Power Density: 3.6 W/m² over 4 cm²



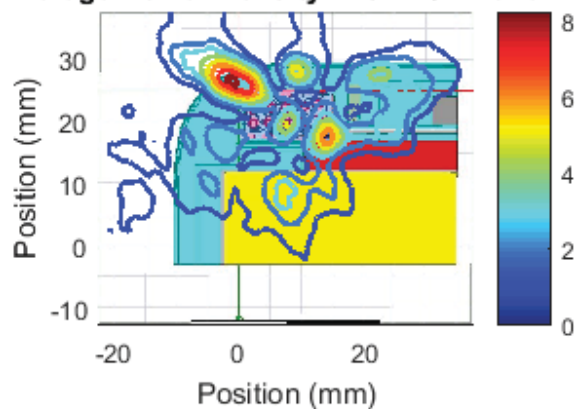
Right Module , Channel 4, front Cut
Sector 12 Near Field Pattern
Average Power Density: 8.1 W/m² over 4 cm²



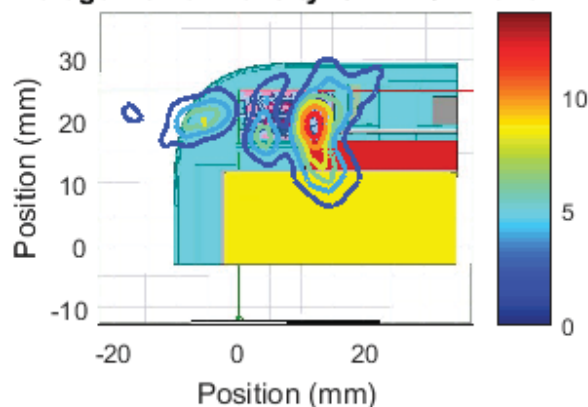
Right Module , Channel 4, front Cut
Sector 13 Near Field Pattern
Average Power Density: 3.63 W/m² over 4 cm²



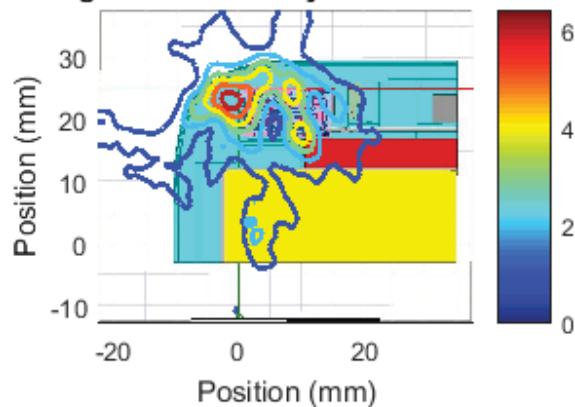
Right Module , Channel 4, front Cut
Sector 14 Near Field Pattern
Average Power Density: 2.57 W/m² over 4 cm²



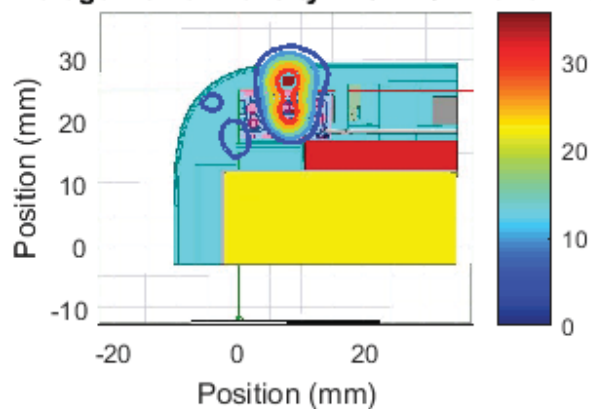
Right Module , Channel 4, front Cut
Sector 15 Near Field Pattern
Average Power Density: 3.74 W/m² over 4 cm²



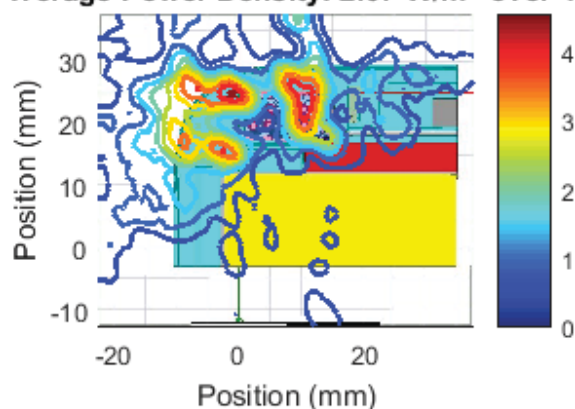
Right Module , Channel 4, front Cut
Sector 16 Near Field Pattern
Average Power Density: 2.51 W/m² over 4 cm²



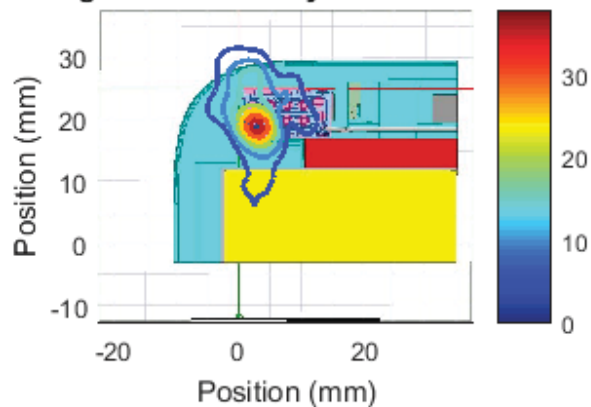
Right Module , Channel 4, front Cut
Sector 17 Near Field Pattern
Average Power Density: 7.84 W/m² over 4 cm²



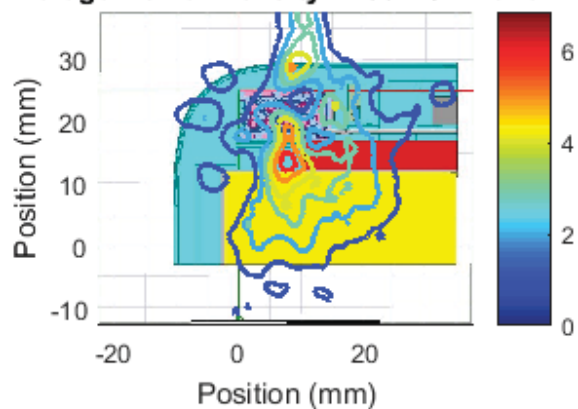
Right Module , Channel 4, front Cut
Sector 18 Near Field Pattern
Average Power Density: 2.07 W/m² over 4 cm²



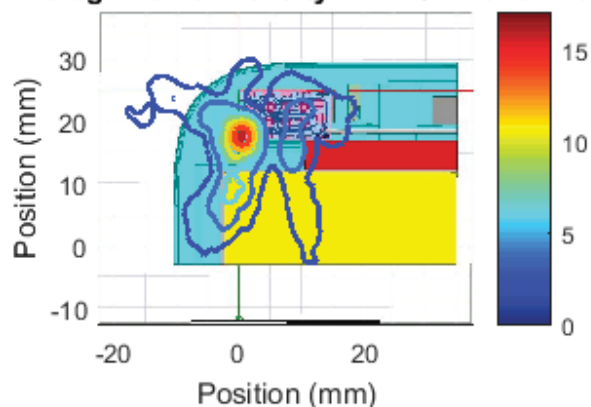
Right Module , Channel 4, front Cut
Sector 19 Near Field Pattern
Average Power Density: 7.83 W/m² over 4 cm²



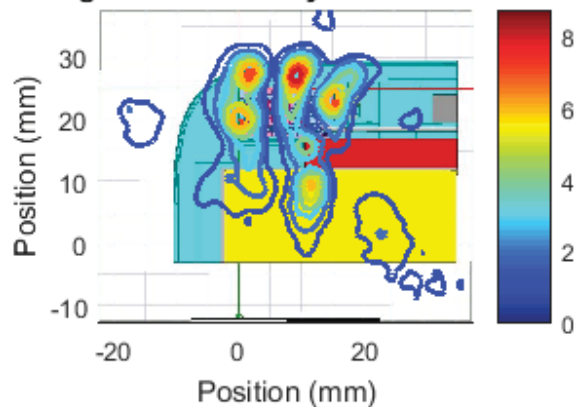
Right Module , Channel 4, front Cut
Sector 20 Near Field Pattern
Average Power Density: 2.86 W/m² over 4 cm²



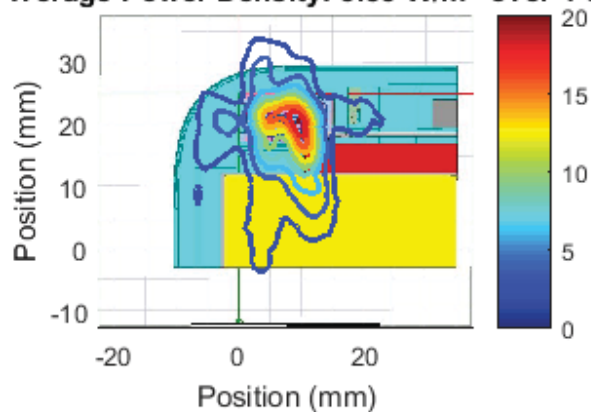
Right Module , Channel 4, front Cut
Sector 21 Near Field Pattern
Average Power Density: 4.2 W/m² over 4 cm²



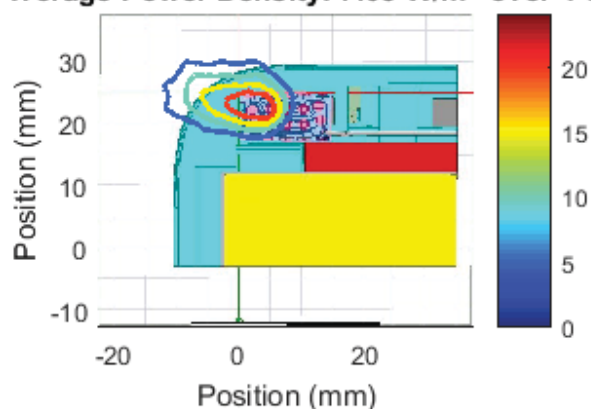
Right Module , Channel 4, front Cut
Sector 22 Near Field Pattern
Average Power Density: 2.92 W/m² over 4 cm²



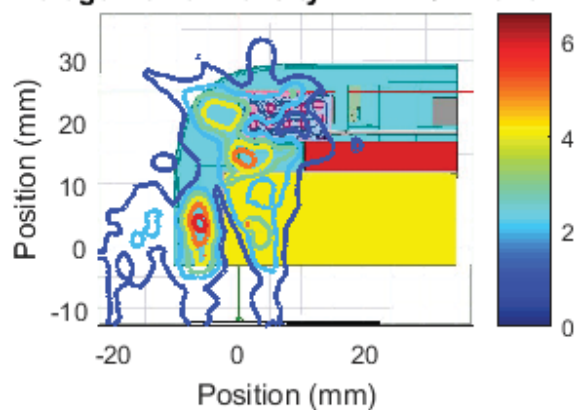
Right Module , Channel 4, front Cut
Sector 23 Near Field Pattern
Average Power Density: 5.83 W/m² over 4 cm²



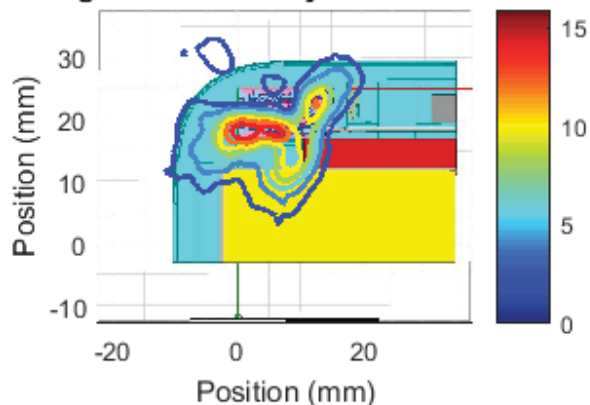
Right Module , Channel 4, front Cut
Sector 24 Near Field Pattern
Average Power Density: 7.08 W/m² over 4 cm²



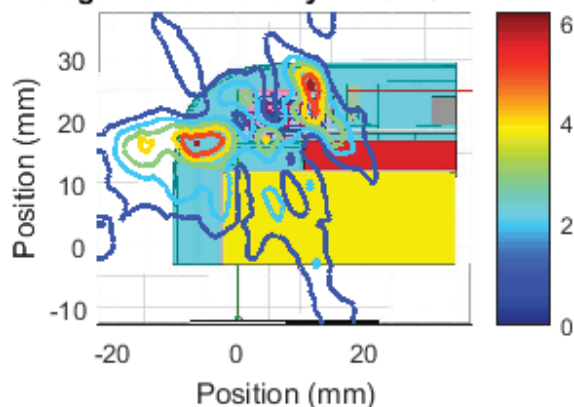
Right Module , Channel 4, front Cut
Sector 25 Near Field Pattern
Average Power Density: 2.41 W/m² over 4 cm²



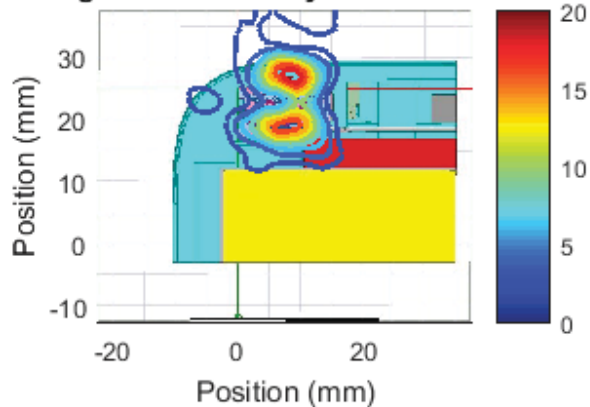
Right Module , Channel 4, front Cut
Sector 26 Near Field Pattern
Average Power Density: 5.64 W/m² over 4 cm²



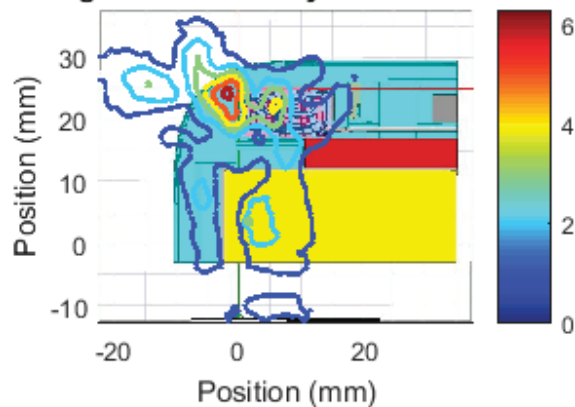
Right Module , Channel 4, front Cut
Sector 27 Near Field Pattern
Average Power Density: 2.23 W/m² over 4 cm²



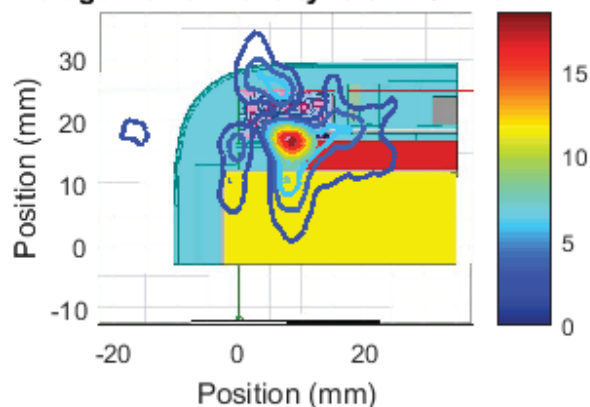
Right Module , Channel 4, front Cut
Sector 28 Near Field Pattern
Average Power Density: 5.71 W/m² over 4 cm²



Right Module , Channel 4, front Cut
Sector 29 Near Field Pattern
Average Power Density: 2.09 W/m² over 4 cm²



Right Module , Channel 4, front Cut
Sector 30 Near Field Pattern
Average Power Density: 3.94 W/m² over 4 cm²



Right Module , Channel 4, front Cut
Sector 31 Near Field Pattern
Average Power Density: 5.61 W/m² over 4 cm²

