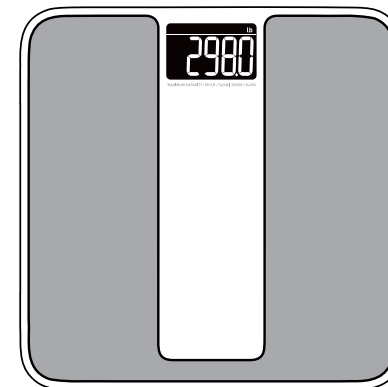


User Manual

Pro Cellular Body Scale
BS-2001-G1



TeleRPM™
TeleWeight Gen 1



ZHONGSHAN TRANSTEK ELECTRONICS CO., LTD
No.23, Jin'an Road, Minzhong, Zhongshan, 528441, Guangdong, China
www.transtekcorp.com

version: 1.0

- Thank you for choosing Transtek Pro Cellular Body Scale!
- Please read this manual thoroughly to know how to use your Pro Cellular Body Scale safely and correctly. Keep the manual well for future reference.

Table of Contents

Symbols	2
Safety Information	
Where to Use and Store Your Scale	2
Proper Use of Your Scale	2
Caution	3
Overview	
Device Components	4
List of Parts	4
Scale Display Codes	5
Getting Started	
Installing the Batteries and Pairing the Scale	6
Select Unit of Measure	7
Start Measuring	8
Troubleshooting	
Error Prompt	9
When Measuring	10
Specifications	11
Maintenance	12
Warranty	12
FCC Regulations	13
EMC Guidance	14
Contact Information	16

Symbols

♥ Symbols

	Refer to instruction manual/booklet. To signify that the instruction manual/ booklet must be read.		Manufacturer
	Serial Number		Date of Manufacture
	Direct Current		General symbol for recovery/recyclable
	Type BF applied part		Temperature limit
	Humidity limitation		Atmospheric pressure limitation
	Caution Indicates that caution is necessary when operating the device or control close to where the symbol is placed, or that the current situation needs operator awareness or operator action in order to avoid undesirable consequences.		The symbol indicates that the product should not be discarded as unsorted waste but must be sent to separate collection facilities for recovery and recycling.

Safety Information

♥ Where to Use and Store Your Scale

To ensure your safety as well as the service life of your scale, DO NOT use the scale:

- on the slippery floor such as tile floor
- immediately after bath or with wet feet
- near a cell phone or microwave oven

Avoid storing your scale in the following locations:

- Where there is water
- Where the device may be exposed to extreme temperatures, humidity, moisture, direct sunlight, or dust
- Where there is risk of the scale being shocked or dropped
- Near where chemicals or corrosive gases are stored
- Within the reach of infants or children

♥ Proper Use of Your Scale

To ensure the accuracy of measurements, please follow the instructions below before you weigh yourself.

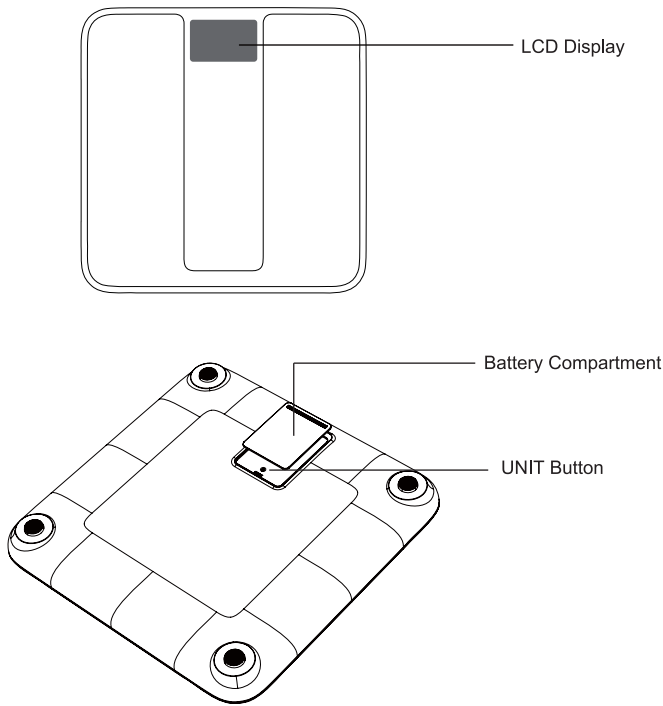
- Place the scale on a hard, flat surface. Soft surfaces such as carpet will affect the scale's accuracy.
- Weigh yourself at least two hours after eating, preferably after getting up in the morning.
- Avoid weighing yourself immediately after strenuous exercise, taking a sauna or bath, drinking, or eating.
- Always weigh yourself at the same time of the day, and on the same scale located on the same hard, flat surface.

Safety Information

⚠ CAUTION

- This device is designed for use on people 10 years and older and is not intended for infants.
- This device is designed for use in the home healthcare environment to measure a person's weight.
- This device is suitable for people who can read and understand this user guide.
The device should not be used to diagnose or treat any medical condition. Any information provided by this device is not meant to treat, cure, or prevent any disease or illness from happening.
If in doubt, contact your doctor.
- This device is contraindicated for any female user who may be pregnant.
- This device is contraindicated for any person who is connected to a wearable or implantable electronic device or instrument such as a pacemaker or defibrillator.
- The scale is equipped with a data transmission function. It may emit electromagnetic energy so as to perform its intended function. Nearby portable and mobile RF communications equipment can affect the performance of the scale. And the scale can interfere with electrical equipment in its vicinity.
- Manufacturer will make available on request circuit diagrams, component parts list, etc.
- Please use the device according to the user manual. Any misuse can cause electric shock, burns, fire, and other unexpected hazards.
- Please use and store the device per the environmental conditions provided in the user manual.
- Don't expose the device to extreme temperatures, direct sunlight, moist, or corrosive environment.
- Don't step on the scale when your body or feet are wet, especially after bathing or showering, to prevent slipping.
- Please keep the device out of reach of infants, children, and pets, since inhalation or swallowing of small parts is dangerous or even fatal.
- Don't use the device beyond the expected lifetime because degraded sensors can degrade performance or cause other problems.
- The patient is an intended operator. The patient can measure, transmit data, and change batteries under normal circumstances and maintain the device and its accessories according to the user manual.
- The scale requires 30 minutes to warm from the minimum and cool from maximum storage temperature between uses until it is ready for measurement.
- After drop or shock that may cause changes in the performance, please contact Customer Support.
- Don't open or repair the device by yourself. The use of heat- and cold-producing devices, such as electric heating blankets, heating pads, or ice packs, may impair the performance of device and increase the risk of injury to the user.
- If you are allergic to plastic or rubber, don't use this device.
- Do not use the device if it is damaged in any way. The continuous use of a damaged unit may cause injury, improper results, or serious danger.
- WARNING: Don't use this device in an oxygen-rich environment.
- WARNING: Don't use near active High Frequency surgical equipment and the RF shielded room of an Medical Equipment system for magnetic resonance imaging, where the intensity of Electro Magnetic disturbances is high.
- WARNING: Portable RF communications equipment (including peripherals such as antenna cables and external antennas) should be used no closer than 30 cm (12 inches) to any part of this equipment, including cables specified by the manufacturer. Otherwise, degradation of the performance of this equipment could result.
- WARNING: Use of this equipment adjacent to or stacked with other equipment should be avoided because it could result in improper operation. If such use is necessary, this equipment and the other equipment should be observed to verify that they are operating normally.
- WARNING: No modifications of this equipment are allowed. This may result in increased EMISSIONS or decreased IMMUNITY of the scale.

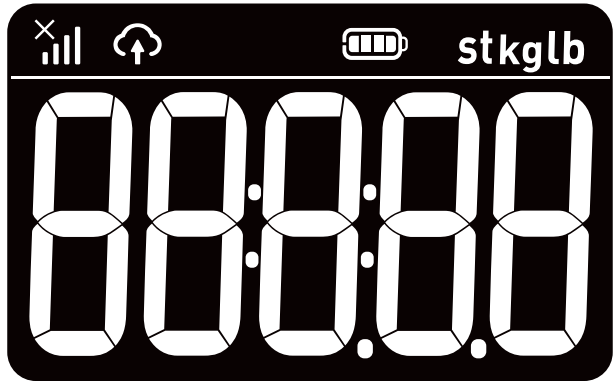
♥ Device Components



♥ List of Parts

- 1. Pro Cellular Body Scale
- 2. Four AA-size Batteries (1.5V each)
- 3. User Manual

♥ Scale Display Codes



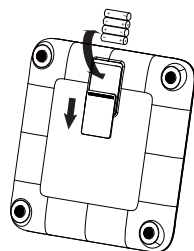
kg	Kilogram	Signal symbol	Signal symbol
st lb	Stone	Data transmitting	Data transmitting
lb	Pound	Battery symbol	Battery symbol



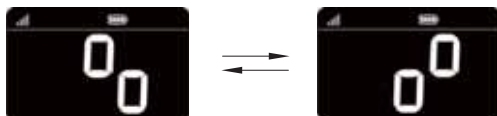
Getting Started

1. Installing the Batteries and Pairing the Scale

- Open the battery door on the back of the scale.
- Insert the batteries (4 x 1.5V AA) into the battery compartment according to the polarity indications marked inside the compartment.



- The scale will automatically pair-up with the system when used for the first time. The signal symbol will be displayed at the same time. It indicates the quality of the current network signal.



If the device successfully pairs up, the symbol "[]" will be shown on the LCD.



If the device fails to pair up, the symbol "E1" will be shown on the LCD.



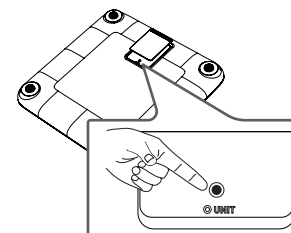
Getting Started

! CAUTION

- When the symbol "Lo" and "Lo" appear, the device will power off. Then replace with a new set of batteries. Please replace all four batteries at the same time. Do NOT mix the old batteries with the new one.
- Worn batteries are hazardous waste. Do NOT dispose of them together with the household garbage.
- Please refer to the local ordinances and recycling instructions regarding disposal of the worn batteries and scrapped device.
- Do not mix alkaline, standard (carbon-zinc), or rechargeable (Ni-Cd, Ni-MH, etc) batteries.
- If you do not intend to use this unit for a prolonged period of time, it is advisable to remove the batteries before storing.

2. Select Unit of Measure

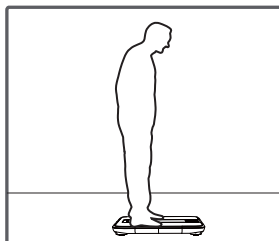
- With batteries correctly installed, you will see the black "UNIT" button into the battery door. Press it to select your preferred unit of measurement. The default measurement unit is "lb". You may press the "UNIT" button to choose between pounds, kilograms, and stones.



- Close battery door

Start Measuring

1. Step on the platform of the device and remain still.

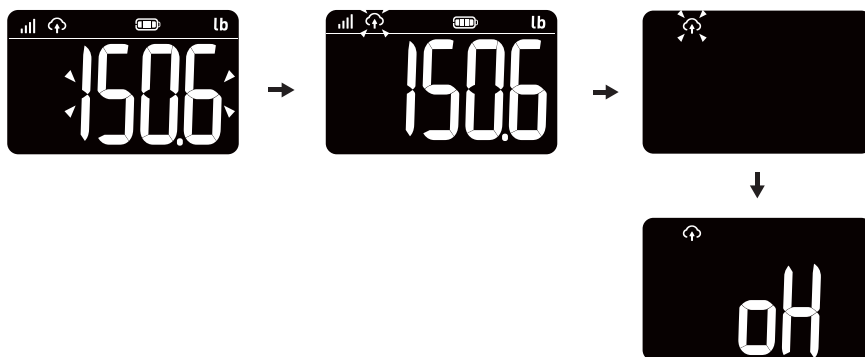


2. Do not move or talk during the measurement.

3. When the measurement concludes, the display briefly blinks and results are shown on the display.

4. Step off the scale platform.

5. The device automatically transmits measurement results.
When data is successfully transmitted, "oH" will be displayed and icon "↻" stops blinking.



Troubleshooting

♥ Error Prompt

Code	Description	Resolution
	Overload	This device is only accurate up to its rated capacity.
	Battery low	1) Replace batteries with four Duracell AAs. 2) Check that batteries are all brand new and not expired.
	Cellular connection error or data transmission error	1) Move the device to another area, preferably closer to a window. 2) If the new area has strong cellular signal and the issues persists, contact customer support.
	Signal not strong enough	1) Replace batteries with four Duracell AAs. 2) Move the device to a strong signal place, preferably closer to a window.
	SIM error	Contact customer support.
	IC is damaged	Contact customer support.

Troubleshooting

♥ When Measuring

Problem	Possible reason	Resolution
No display	Batteries not yet installed or batteries are not installed correctly.	Install the batteries. (Please refer to Installing the Batteries and Pairing the Scale.)
	Battery is running low.	Replace batteries with four Duracell AAs.
The device powers off automatically.	Low battery.	Replace batteries with four Duracell AAs.

Specifications

♥ Specifications

Product Name	Pro Cellular Body Scale
Dimension	Approx. 360 x 360 x 37.2 mm
Net Weight	Approximately 6.7 lb (xcluding the dry cells)
Display	Digital LCD
Measurement Unit	Pound / Kilogram / Stone
Measurement Range	11 lb to 551.2 lb / 5 kg to 250 kg / 0st:11lb to 39st:5lb
Division	0.1 kg / 0.2 lb
Accuracy	50±0.2 kg; 100±0.3 kg; 150±0.4 kg; 200±0.5 kg; 250±0.8 kg
Working Environment	Temperature: 5°C to 40°C Relative Humidity: ≤90% RH Atmospheric pressure: 86 kPa to 106 kPa
Storage Environment	Temperature: -20°C to 60°C Relative Humidity: ≤90% RH Atmospheric pressure: 50 kPa to 106 kPa
Power Source	6V (Four AA-size Batteries)
Battery Life	Around 800 measurements (may vary based on usage conditions and network conditions)
Auto-ON	SENSE ON technology
Auto-OFF	About 10 seconds while showing 0.0;
Accessories	1. Four AA-size Batteries 2. User Manual
Mode of Operation	Continuous Operation
Protection Against Ingress of Water	IP22 (The first number 2: Protected against solid foreign objects of 12.5 mm Φ and greater. The second number 2: Protection against vertically falling water drops when enclosure tilted up to 15° on either side of the vertical.)
Software Version	A5
Degree of protection	Type BF applied part (top surface)

Maintenance

♥ Maintenance

When carrying out usual maintenance, please ensure practice of the following Do's and Don'ts:

- DO use a dry soft cloth to wipe the dust off of this device.
- DO use a wet soft cloth, dipped into water and wrung out, to wipe the dirt off of this device. Then use a dry soft cloth to dry up the device.
- DON'T wash the device with water or immerse it in water.
- DON'T use propellant, abrasive or other chemicals to wipe the dirt off in avoidance of discolor or malfunction.
- DON'T disassemble this device. If you have any problems with this device, please contact customer support.
- Don't perform maintenance while device is in use.

Warranty

♥ Warranty

- Your scale is guaranteed to be free of material and workmanship defects for a period of two (2) years from the date of receipt.
- This warranty does NOT cover damages caused by misuse or abuse, including but not limited to:
 - Failure caused by unauthorized repairs or modifications;
 - Damage caused by shock or drop during transportation;
 - Failure caused by improper operation inconsistent with the instructions stated in this user manual;
 - Malfunction or damage from failure to provide the recommended maintenance;
 - Damage caused by improper use of power supply.

FCC Regulations

♥ FCC Regulations

FCC User Guide Information

Radio Frequency Interface Requirements - FCC

Note: This equipment has been tested and found to comply with the limits for a Class B digital device, pursuant to Part 15 of the FCC rules. These limits are designed to provide reasonable protection against harmful interference in a residential installation. This equipment generates, uses and can radiate radio frequency energy and, if not installed and used in accordance with the instructions, may cause harmful interference to radio communications. However there is no guarantee that interference will not occur in a particular installation. If this equipment does cause harmful interference to radio or television reception, which can be determined by turning the equipment off and on, the user is encouraged to try to correct the interference by one or more of the following measures:

- Reorient or relocate the receiving antenna;
- Increase the separation between the equipment and receiver;
- Connect the equipment into an outlet on a circuit different from that to which the receiver is connected;
- Consult the dealer or an experienced radio / TV technician for help.

Radio Transmitters (Part 15)

This device complies with Part 15 of the FCC Rules. Operation is subject to the following two conditions: (1) this device may not cause harmful interference, and (2) this device must accept any interference received, including interference that may cause undesired operation.

Changes or modifications not expressly approved by the party responsible for compliance could void the user's authority to operate the equipment.

RF Exposure Compliance

This equipment complies with FCC radiation exposure limits set forth for an uncontrolled environment. End user must follow the specific operating instructions for satisfying RF exposure compliance. This transmitter must not be co-located or operating in conjunction with any other antenna or transmitter.

The portable device is designed to meet the requirements for exposure to radio waves established by the FCC. These requirements set a SAR limit of 4.0 W/kg averaged over one gram of tissue. The highest SAR value reported under this standard during product certification for use when properly worn on the hand/feet/ankle/wrist, with 0mm separation.

Guidance and manufacturer's declaration - electromagnetic emissions	
Emissions test	Compliance
RF emissions CISPR 11	Group 1
RF emissions CISPR 11	Class B
Harmonic emissions IEC 61000-3-2	Not applicable
Voltage fluctuations/ flicker emissions IEC 61000-3-3	Not applicable

Guidance and manufacturer's declaration - electromagnetic Immunity		
Immunity Test	IEC 60601-1-2 Test level	Compliance level
Electrostatic discharge (ESD) IEC 61000-4-2	±8 kV contact ±2 kV, ±4 kV, ±8 kV, ±15 kV air	±8 kV contact ±2 kV, ±4 kV, ±8 kV, ±15 kV air
Electrical fast transient/burst IEC 61000-4-4	Not applicable	Not applicable
Surge IEC 61000-4-5	Not applicable	Not applicable
Voltage dips, short interruptions and voltage variations on power supply input lines IEC 61000-4-11	Not applicable	Not applicable
Power frequency magnetic field	30 A/m 50Hz/60Hz	30 A/m 50Hz/60Hz
IEC 61000-4-8		
Conducted RF IEC61000-4-6	Not applicable	Not applicable
Radiated RF IEC61000-4-3	10 V/m 80 MHz – 2,7 GHz 80 % AM at 1 kHz	10 V/m 80 MHz – 2,7 GHz 80 % AM at 1 kHz
NOTE U _T is the a.c. mains voltage prior to application of the test level.		

Guidance and manufacturer's declaration - electromagnetic immunity								
Radiated RF IEC61000-4-3 (Test specifications for ENCLOSURE PORT IMMUNITY to RF wireless communica- tions equipment)	Test Frequency (MHz)	Band (MHz)	Service	Modulation	Maximum Power (W)	Distance (m)	IEC 60601-1-2 Test Level (V/m)	Compliance level (V/m)
	385	380-390	TETRA 400	Pulse modulation 18 Hz	1.8	0.3	27	27
	450	430-470	GMRS 460, FRS 460	FM ±5k Hz deviation 1 kHz sine	2	0.3	28	28
	710	704-787	LTE Band 13, 17	Pulse modulation 217 Hz	0.2	0.3	9	9
	745							
	780							
	810	800-960	GSM 800/900, TETRA 800, iDEN 820, CDMA 850, LTE Band 5	Pulse modulation 18 Hz	2	0.3	28	28
	870							
	930							
	1720	1700- 1990	GSM 1800; CDMA 1900; GSM 1900; DECT; LTE Band 1, 3, 4, 25; UMTS	Pulse modulation 217 Hz	2	0.3	28	28
	1845							
	1970							
	2450	2400- 2570	Bluetooth, WLAN, 802.11 b/g/n, RFID 2450, LTE Band 7	Pulse modulation 217 Hz	2	0.3	28	28
	5240	5100- 5800	WLAN, 802.11 a/n	Pulse modulation 217 Hz	0.2	0.3	9	9
	5500							
	5785							

Contact Information

Please contact your program's customer support. Transtek will not be able to directly assist customers.

Manufactured at:

Zhongshan Transtek Electronics Co.,Ltd
No.23,Jin'an Road, Minzhong,Zhongshan,528441,Guangdong China

Customer Support:

