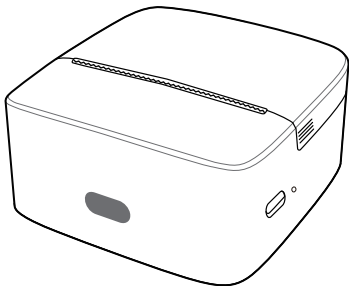


peripage



使用说明书 INSTRUCTION MANUAL

## Attention



Attention! The paper tearing blade has sharp edges, please be careful not to touch it to prevent cutting.



Attention! Hot parts! After printing, do not print the head directly to prevent overheating and scalding. Turn off the power and wait for half an hour to print the head.



This product must be used under adult supervision.

## Warning!

- This product does not include a power adapter as standard. If you use a power adapter for charging, you should purchase a CCC certified power adapter.
- There is a danger in using the incorrect battery pack.
- Please do not put the battery into the fire or heating furnace, and do not dispose of the battery mechanically or by cutting.
- Please do not place the battery at extremely high temperatures that may cause the battery or leak combustible liquids or gases.
- Please do not place the battery in extremely low air pressure that may cause the battery or leak combustible liquids and gases.
- Running this device in residence may cause radio interference.



厦门爱立得科技有限公司  
廈門愛立得科技有限公司  
Xiamen iLead Tek Co., Ltd.

厦门市软件园三期诚毅北大街50号2101单元01室  
廈門市軟件園三期誠毅北大街50號2101單元01室  
Unit 2101, No.50 Chengyi North Street,  
Software Park Phase III, Xiamen, Fujian, P.R.C

☎ [www.ileadtek.com](http://www.ileadtek.com)

✉ [service@ileadtek.com](mailto:service@ileadtek.com)

V1.0

## Product Sketch

### ① Open Side

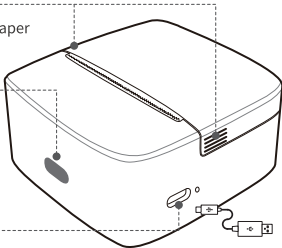
- Open the cover to change the paper

### ② Power Button

- Press and hold for 2 seconds to turn on/off
- Double click power button to print QR code of the printer
- Click to terminate printing

### ③ Type-C Interface

- Charged with power bank or mobile phone charger



## Power Indicator Status

- Green light on: Normal use status/Full charged
- Red light on: No paper/Overheating/Charging
- Red light flashing: Low battery, please charge in time

# App Printing

## Step 1: App Download

Please search for [PeriPage] on Google Play or App Store, or scan the following QR code to download the App.



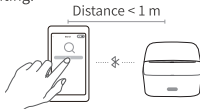
App Download



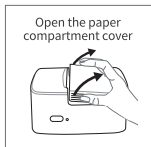
Video Guide

## Step 2: App connects to printer

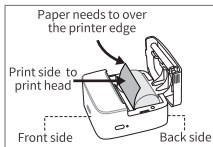
- 1 Press and hold the power button for 2 seconds to turn on the printer.
- 2 Open the [PeriPage] App, enter the interface of connecting the device, and click to connect to the discovered printer. Or press the power button twice to print the QR code, then connect the printer by scanning the code.  
(Tips: Don't connect printer in the mobile phone bluetooth settings.)
- 3 After the printer is connected, open the function provided by the App to operate Bluetooth printing.



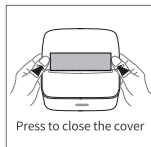
## Open Cover to Change Paper



❶ Open the Cover



❷ Put Paper

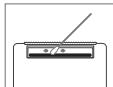


❸ Close the Cover

## Charging Instructions

- 5V=1A input, recommend to use mobile phone charger for charging.
- Recommend to charge the battery fully before using.
- If printer has not been used for a long time, please charge it every 3 months, to avoid long-term natural wear and tear of lithium batteries can not be charged.

## Clean the Printer Head



- ❶ Please turn off the printer and open the printer cover and take out the paper.
- ❷ Dip a cotton cloth or cotton swab with medical alcohol, and wipe gently along the center to the periphery of the printer head.
- ❸ After cleaning the printer head, do not use the printer immediately. Please wait for 1 to 2 minutes, use the printer after the alcohol has completely evaporated.

## **Information to User**

This device complies with part 15 of the FCC Rules. Operation is subject to the following two conditions: (1) This device may not cause harmful interference, and (2) this device must accept any interference received, including interference that may cause undesired operation.

### **Note**

This equipment has been tested and found to comply with the limits for a Class B digital device, pursuant to part 15 of the FCC Rules. These limits are designed to provide reasonable protection against harmful interference in a residential installation. This equipment generates, uses and can radiate radio frequency energy and, if not installed and used in accordance with the instructions, may cause harmful interference to radio communications. However, there is no guarantee that interference will not occur in a particular installation. If this equipment does cause harmful interference to radio or television reception, which can be determined by turning the equipment off and on, the user is encouraged to try to correct the interference by one or more of the following measures:

- Reorient or relocate the receiving antenna.
- Increase the separation between the equipment and receiver.
- Connect the equipment into an outlet on a circuit different from that to which the receiver is connected.
- Consult the dealer or an experienced radio/TV technician for help.

### **Important**

Change or modifications not expressly approved by the manufacturer responsible for compliance could void the user's authority to operate the equipment.

### **FCC Radiation Exposure Statement**

This equipment complies with FCC radiation exposure limits set forth for an uncontrolled environment. This equipment should be installed and operated with a minimum distance of 20cm between the radiator and your body. This transmitter must not be co-located or operating in conjunction with any other antenna or transmitter.