

140 mm x 90 mm, double side printed

■ 299C

■ K100

(Outside)



Specifications

Input: 5VDC/2A; 9VDC/1.67A; 12VDC/1.5A

Output: up to 15W

Charging Distance: 5mm-6mm



User Manual

15W Fast Charge Wireless Charger Stand

CAUTION:

This wireless charger **ONLY** works on devices that have built-in wireless. Do not attempt to disassemble the wireless charging pad as it might damage the product.

F000222R00

140 mm x 90 mm, double side printed



299C

1797C



368C

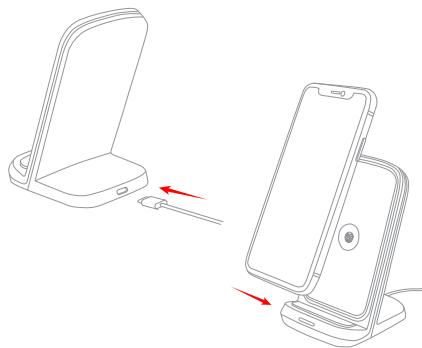


K100

(Inside)

Using your Fast Wireless Charging Stand

- 1 Power up your Wireless Charging Stand using provided USB-C Cable and power supply ONLY. Plug in the USB-C cable into the "USB-C" port as shown on the image.
- 2 Place your Qi-enabled device on the Wireless Charging Stand.

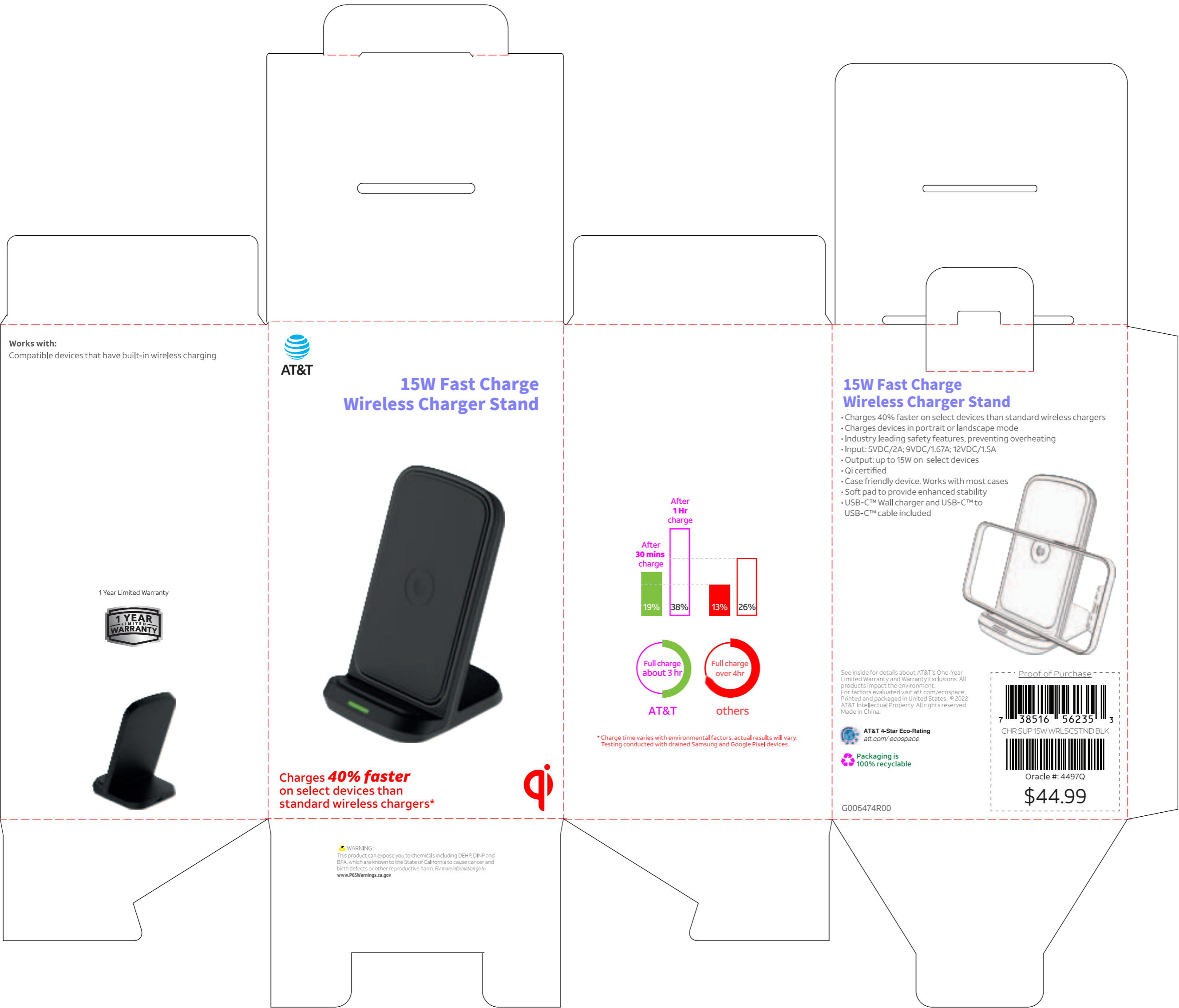


Charging Indicator Light Status (for both stand and pad)

- Red flashing light: ERROR, please re-position your device
- Green light: CHARGING, lights up green, flashes 3 times and goes off (device will remain charging)

WARNING: Any metallic/conductive object between device and wireless charging pad will cause an ERROR (i.e. metallic plate)

Dieline#: SCNCN0061
ATT 15W Premium Wireless Charging Stand
Size:88*80*148mm



Dieline#: SCNCN0061
ATT 15W Premium Wireless Charging Stand
Size:88*80*148mm

