

INTERNAL PHOTOS

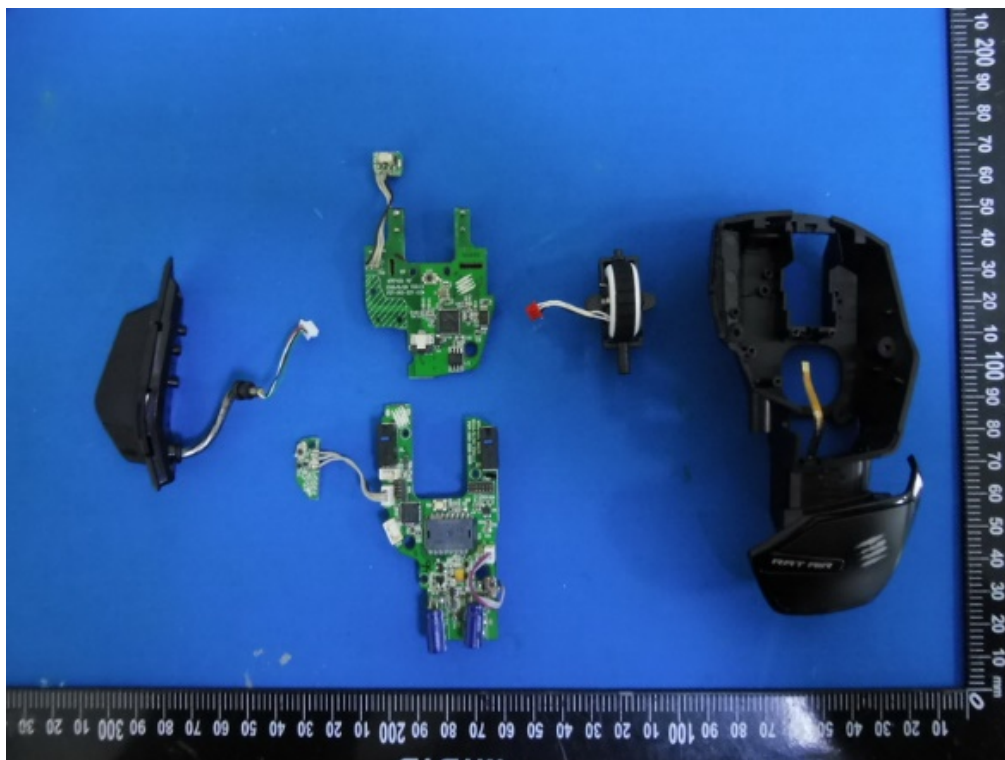
EUT- Uncover View



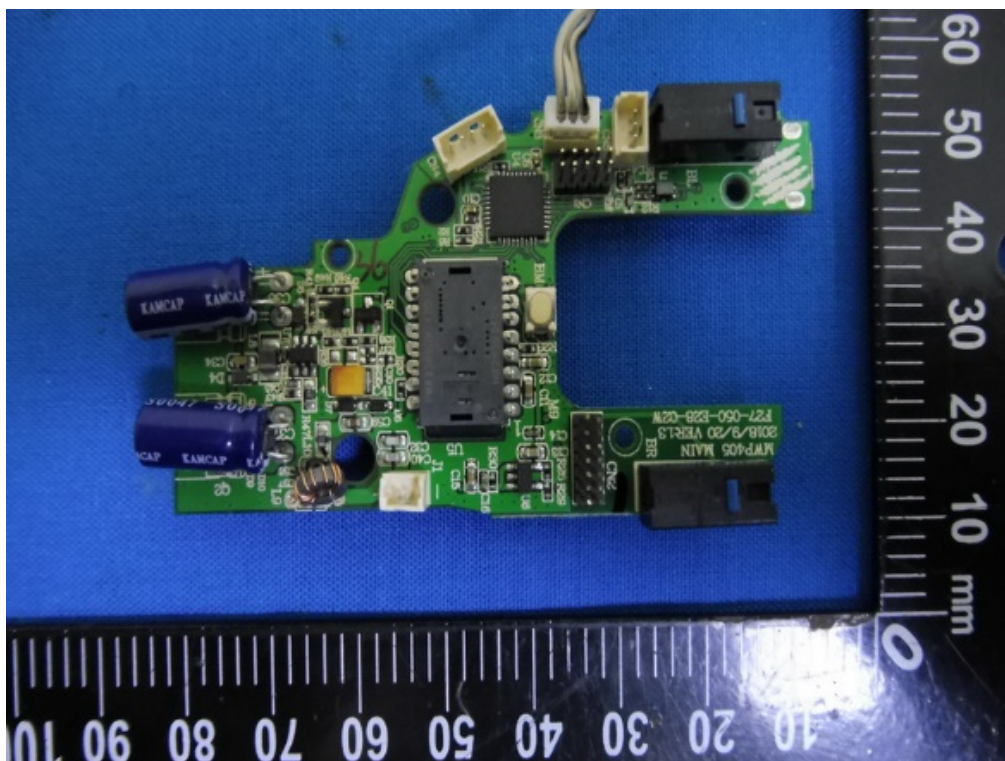
EUT- Uncover View



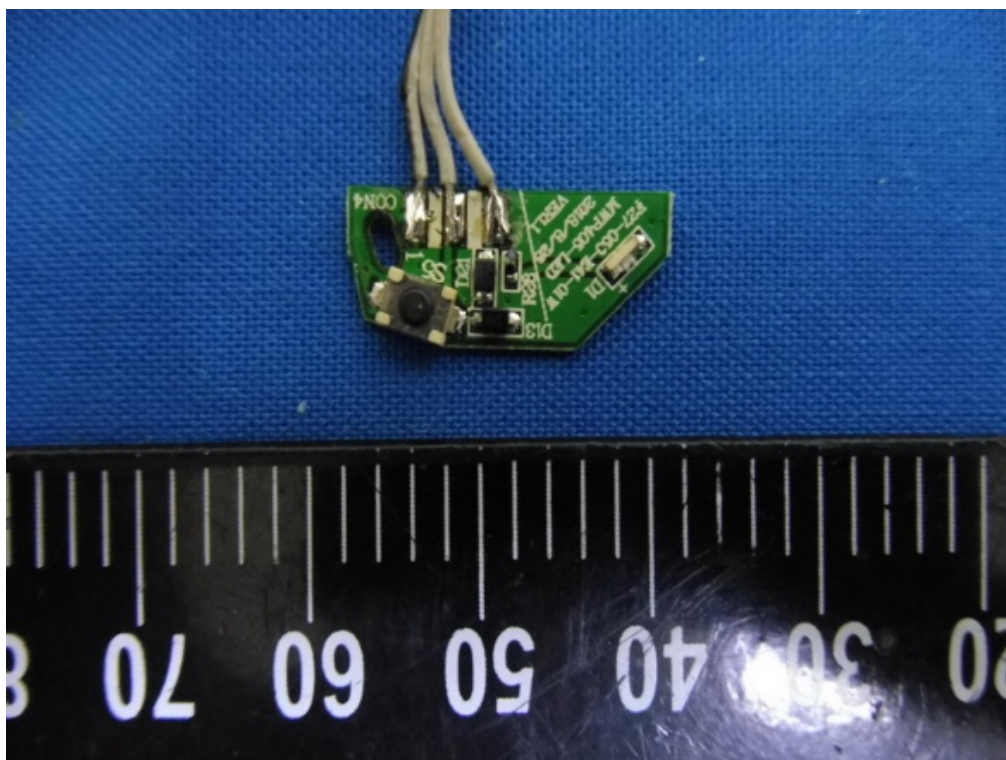
EUT- Uncover View



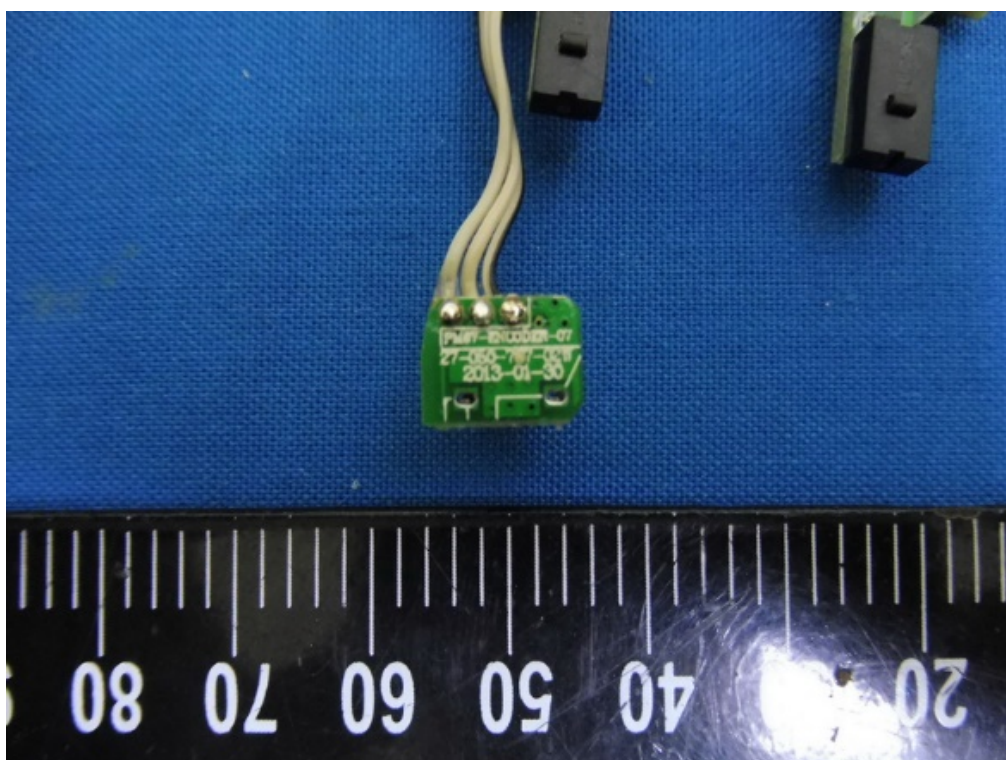
EUT- Uncover View



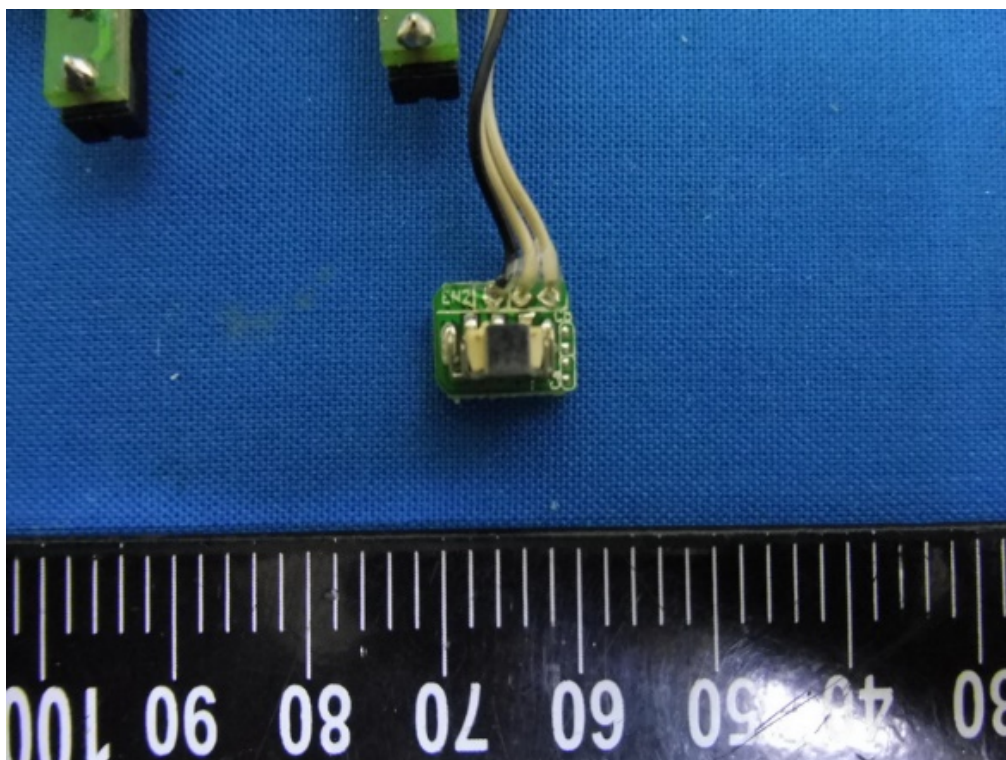
EUT- Uncover View



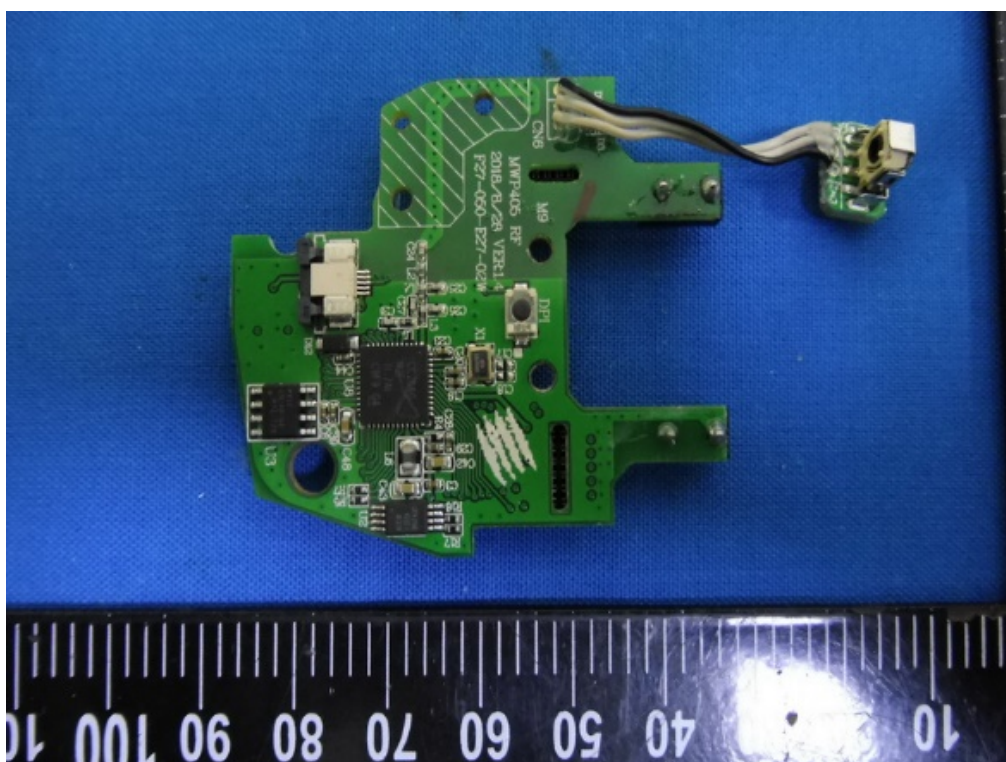
EUT- Uncover View



EUT- Uncover View



EUT- Main Board Top View



The image shows a green printed circuit board (PCB) for a Sony CCD camera, labeled '94V0 E467089 HX-008'. The board is irregularly shaped with several mounting holes. It features two connectors: CN1-1 (a 10-pin D-sub connector) and CN2-1 (a 15-pin D-sub connector). A small ribbon cable is connected to CN1-1. The board also has various surface components, including resistors, capacitors, and integrated circuits. A ruler is placed below the board for scale, showing measurements in centimeters.

PCB Antenna – Top View

