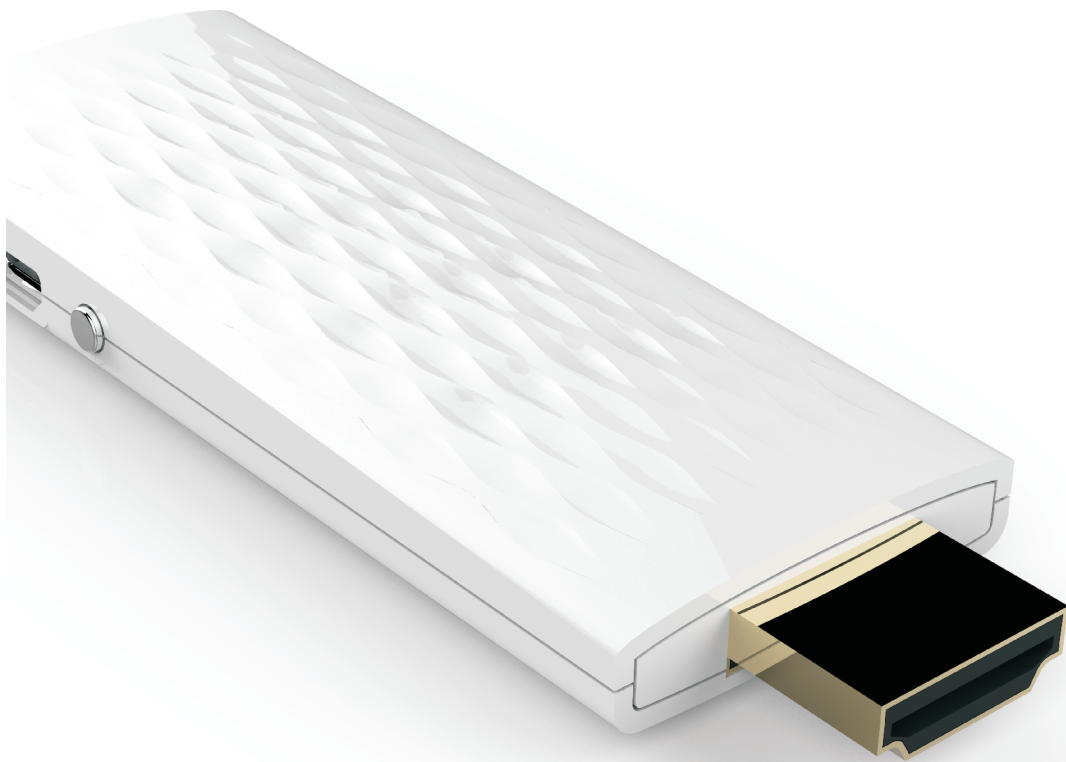


# HDMI WiFi Dongle



## 1. PRODUCT DESCRIPTION

This HDMI DONGLE is small and beautifully designed, with popular Linux intelligent operating system. You can switch the mode between MIRACAST and DLNA system by press-key as it without display screen and touch screen. It can play the digital media program on smartphones or tablets to HDTV with 1080p resolution by WIFI.

## 2. PRODUCT PERFORMANCE

Specification	Parameter
Operating system	Linux smartphone operating system
C P U	Single-core ARM Cortex-A9, clocked at 1.2 GHZ
Memory	DDR3, frequency 400MHZ, memory capacity is 2Gb (256M)
Memory	32MB
Wireless transmission	Wireless transmission 2.4G, transmission speed is 150MBit, transmission distance of 5M-10M
Transmission delay	8nS
Interface Devices	Gold-plated HDMI
Video Format	WMV AVI 3GP RMVB MP4 MVC
Power supply	USB 5V/500mA
Mechanical Dimensions	75mmx30mmx11mm
Packing Accessories	Host, USB power cable, manual, certificate

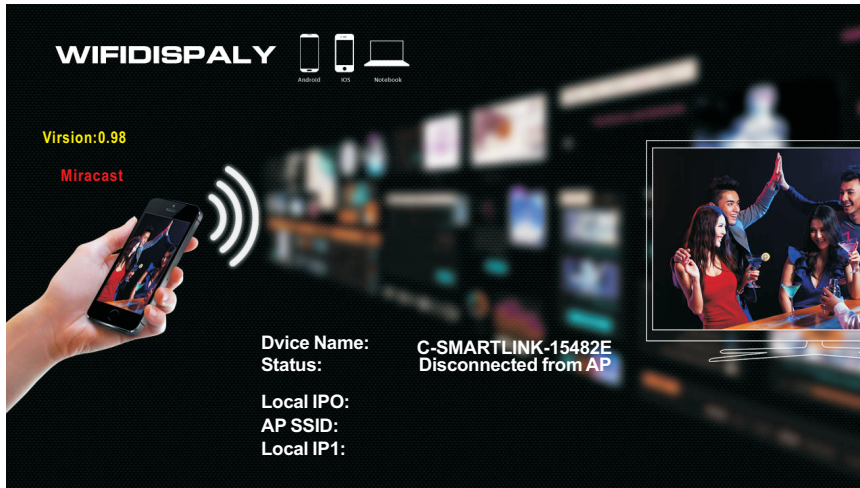
## 3. FEATURE

- Support Miracast wireless display, Android 4.2 above systems,
- Support online movies, online TV channels, online webcasts, web browsing
- Picture and sound are synchronized transmission, without affecting the normal phone WIFI Internet
- Products can support two modes: Miracast DLNA

## 4.INSTRUCTIONS FOR USE

Products connected to the power system enters Miracast page

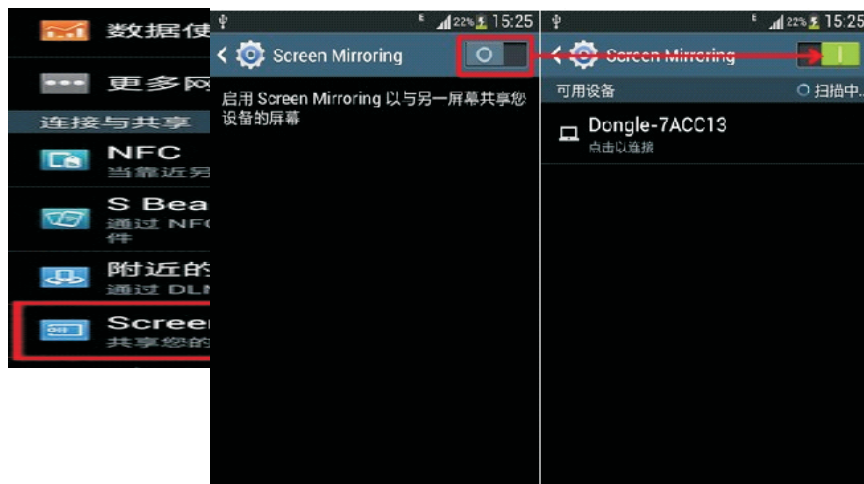
Use the button to switch to the Miracast page:



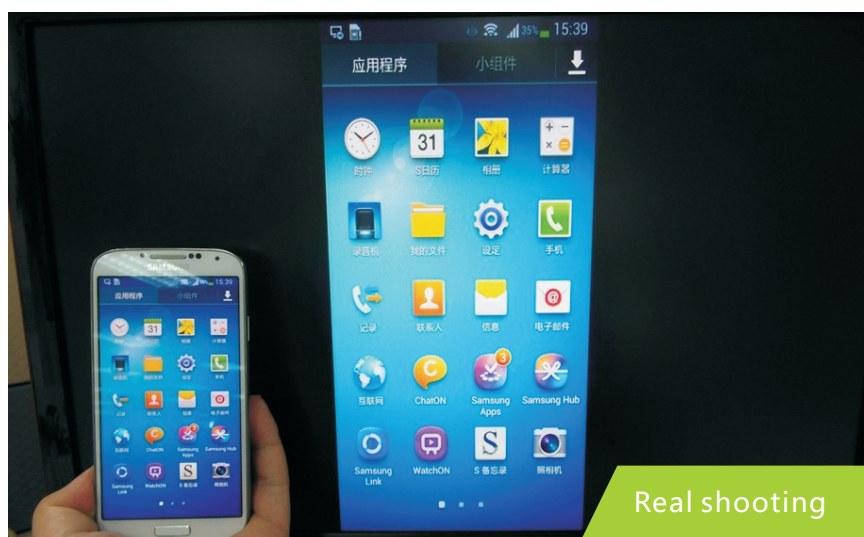
Open SCREEN MIRRORING function of the phone:

Connect the device to a WIFI network, such as Dongle-7ACC13 TV display shown above Said that it has successfully connected phone model





After a successful connection, switch screen to HDMI mode and then it can mirror the contents on smartphone



## 5.Instructions:

AirPlay Mirroring is a new technology that explored by APPLE, which can transfer music, video and images from iPhone, iPad or iPad Touch to Apple TV. Apple TV can integrate with several APPLE devices in a good way by AirPlay mirroring. It' s a great function for APPLE users. Family can share happiness together.

Miracast is a project that start by WIFI ALLIANCE on 19th, Sep., 2012. Miracast simplify searching and setting, users can transfer video in different devices very quickly. Users can enjoy the pictures on TV from smartphone, share the contents on laptop, and watch live TV program on tablets. Miracast make connection by Wi-Fi CERTIFIED Wi-Fi Direct, no need to connect with WIFI.

If the S4 contract phone can not use SCREEN MIRRORING, please download plug-ins from our website.

Disconnect may happen for Samsung, it' s the problem of Samsung system. All Miracast devices have the same problem.

All smartphone with Android system 4.2 or above can use this dongle. If you can search these words(such as Miracast, wifi display, screen mirroring) from your phone, it means your phone support this dongle.

You can download Mirrorop software from our website when connect to computer.

Miracast (Support Installation System 4.2 or later version)  
equipment to be switched to Miracast mode, as long as the  
phone is 4.2 installed, you can use the device,  
The following phone only represent other models of  
mobile phones, please contact customer service

Millet Mobile: m 2 / m 2S / m 2A / m 3 / red rice

Samsung Mobile: S3 Series / S4 Series / NOT2 Series / NOT3 Series

OPPO Mobile: X909T/R809T/R815T/R821T

Lenovo Mobile: S898T/K910/S920/P780

LG Mobile: Nexus5/Nexus4/OF200K/GL-01E

SONY Mobile: Lh35 Series / Lh36 Series / Lh39 Series

HTC Mobile: HTC ONEX / HTC ONES

Huawei Mobile: Glory 3C / glory 3X/A199/Mate/B199

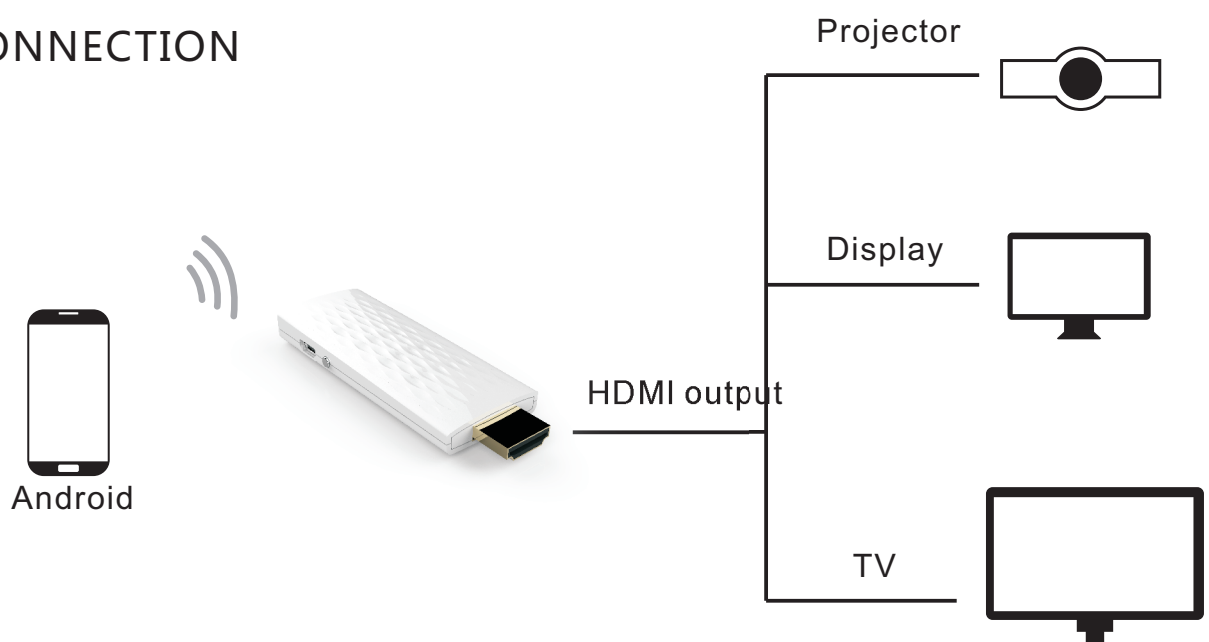
Jin Li Mobile: E3/E6/X805/X817

ZTE Mobile: N986/V879/V9631/V818

TCL Mobile: S950/J900/J720/J620

Cool Pad Mobile: Grand 4/9080W/8908/7296

## CONNECTION





**FCC ID: 2ACFF-DMH25**

C-SMARTLINK INFORMATION TECHNOLOGY CO.,LIMITED

Model No.: DMH25

Model name: HDMI WiFi Dongle



This device complies with Part 15 of the FCC Rules. Operation is subject to the following two conditions: (1) this device may not cause harmful interference, and (2) this device must accept any interference received, including interference that may cause undesired operation.

Changes or modifications not expressly approved by the party responsible for compliance could void the user's authority to operate the equipment.

This device and its antenna(s) must not be co-located or operation in conjunction with any other antenna or transmitter.

The device has been evaluated to meet general RF exposure requirement. The device can be used in portable exposure condition without restriction.

Note: This equipment has been tested and found to comply with the limits for a Class B digital device, pursuant to part 15 of the FCC Rules. These limits are designed to provide reasonable protection against harmful interference in a residential installation. This equipment generates, uses and can radiate radio frequency energy and, if not installed and used in accordance with the instructions, may cause harmful interference to radio communications. However, there is no guarantee that interference will not occur in a particular installation. If this equipment does cause harmful interference to radio or television reception, which can be determined by turning the equipment off and on, the user is encouraged to try to correct the interference by one or more of the following measures:

- Reorient or relocate the receiving antenna.
- Increase the separation between the equipment and receiver.
- Connect the equipment into an outlet on a circuit different from that to which the receiver is connected.
- Consult the dealer or an experienced radio/TV technician for help.