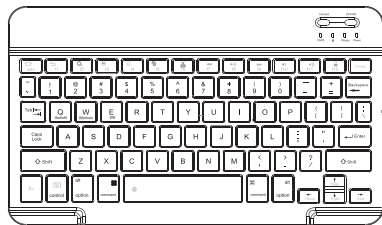


蓝牙键盘用户手册



一、特点

欢迎您选择这款蓝牙无线键盘，键盘采用蓝牙无线连接和剪刀脚按键结构，会给您带来完美的输入体验。内置聚合物锂电池，充电指示灯，可多次充电循环使用。10分钟无按键按下自动进入睡眠状态，耗电极小，有超长的续航时间。

二、对码连接说明

使用无线键盘之前，必须和你的平板电脑设备进行配对连接。连接成功后，以后使用过程中不用重新连接。

按照正面的图示把键盘连接到您的平板电脑设备上。

1. 键盘的电源开关到ON。
2. 按住Connect键3秒，出现蓝灯闪烁。
3. 打开IPAD的设置--蓝牙，找到Bluetooth Keyboard，点击连接(免密码连接)。



三、快捷键

Fn+功能组合键，按住Fn键，可以输入键盘上的蓝色字符，或控制键盘上的蓝色按键。

🏠 主屏幕/退出	⏮ 上一曲	🔒 关闭屏幕
🔍 搜索	⏸ 播放/暂停	🌐 语言切换
📁 全选	⏭ 下一曲	⌨ 软键盘开关
📄 复制	🔊 音量调低	
📄 粘贴	🔊 音量调高	
✂ 剪切	⌘ 功能组合键	

输入法切换

IOS系统: control+空格键

四、指示灯

Power LED: 键盘开机时，此LED亮1-2Sec后自动熄灭；

Charge LED: 此LED亮时键盘处于充电状态，充满后自动熄灭；

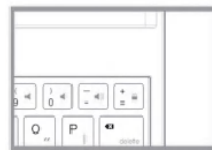
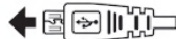
BT LED: 此LED闪亮时键盘处于连接状态，连接后自动熄灭；

CAPS LED: 此LED亮时键盘字母由小写切换至大写。

安装说明

一、充电说明

1. 第一次使用时，请至少充电6小时后再使用键盘。以后当电池电量低，充电时请至少充电2小时以上。
2. CHARGE红色指示灯闪烁时说明电池电量低，请及时充电。CHARGE红色指示灯常亮时说明电池正在充电中。
3. 请按下图正确连接充电线到键盘



故障排除

如果你的键盘不能正常工作时；

1. 请确保你的电脑蓝牙功能已启用。
2. 键盘须在距离电脑10米范围之内。
3. 输入的连接密码是否正确。
4. 键盘内置电池电量过低时请给键盘充电。
5. 如果键盘不能与平板电脑配对连接或配对成功后，在文字输入过程中出现打字延时或者字母连打，请按以下步骤操作：

--删除平板电脑蓝牙选项里的所有蓝牙设备

--关闭平板电脑上的蓝牙功能选项

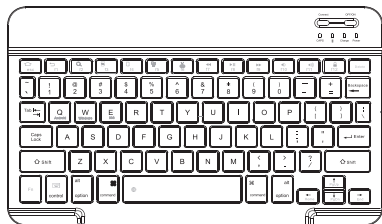
--重新启动平板电脑

--键盘与平板电脑再次进行连接

产品规格

- 1) 频率范围: 2.4GHz 频段
- 2) 工作电压: 3.7VDC (内置聚合物锂电池)
- 3) 工作电流: <5mA
- 4) 待机电流: 1.0mA
- 5) 睡眠电流: <0.25mA
- 6) 传输距离: 最远10米

BLUETOOTH KEYBOARD USER MANUAL



1. Features

Welcome you to choose this Bluetooth wireless keyboard. It adopts Bluetooth wireless connection and scissor key structure, which will bring you a perfect input experience. It has built in rechargeable polymeric lithium battery and charging indicator. The keyboard will enter into sleeping mode if there is no action in 10 minutes, therefore it has a small consumption and long battery life.

2. Pairing Instruction

Before use this keyboard, it must be connected with your tablet or other device. When it pairs successfully, you do not need to re-connect it in future.

Please connect the keyboard with your tablet according to the right graphic instruction as below.

- 1). Turn on the keyboard.
- 2). Press the "Connect" button to 3 seconds, the blue light blinks.
- 3). Open the Bluetooth from settings in your IPAD and find the Bluetooth keyboard, then click and connect (Password free connection).



3. Hot Keys

Fn+function keys, Press Fn and the blue keys as below

	Desk/Exit		Previous		Lock Screen
	Searching		Play/Pause		Language switching
	Select All		Next		
	Copy		Volume -		Soft keyboard switch
	Paste		Volume +		
	Cut		Fn	Function key	

Input Switch IOS: Control+Space

4. Indicator

Power LED: When the keyboard turns on, it flashes 1-2 seconds and then goes out automatically

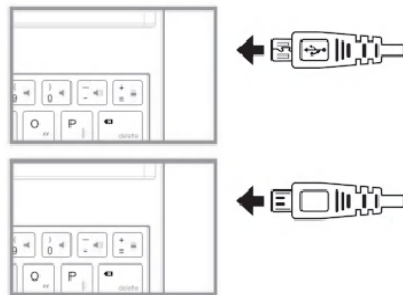
Charge LED: It flashes while charging and goes out once the battery is full.

BT LED: It flashes when the keyboard is connecting and goes out after connected.

CAPS LED: It flashes when switch to capital letters

Charging Instruction

1. Please charge at least 6 hours when you first time use this keyboard. Next time when the battery is low, please at least charge 2 hours.
2. The red indicator flashes means the it is low battery and please charge it in time. It is charging when the red indicator flashes all the time.
3. Please connect the charging cable to the keyboard correctly as below,



Troubleshooting

If your keyboard doesn't work properly;

1. Please make sure that your computer bluetooth function is enabled.
2. The keyboard should be within 10 meters of the computer.
3. The connection password entered is correct.
4. keyboard built-in battery power is too low, please charge the keyboard.
5. if the keyboard is not connected or paired with the tablet computer after successful pairing, the text input delay or even typing letters appear in the process, please according to the following steps: delete all Bluetooth devices, tablet computer Bluetooth option in the closed on a tablet computer Bluetooth option - restart the tablet computer keyboard and tablet computer again.

Specification

Specification

- 1) Frequency: 2.4GHz
- 2) Working Voltage: 3.7V DC
- 3) Working Current: <5mA
- 4) Standby current: 1.0mA
- 5) Sleeping current: <0.25mA
- 6) Working distance: 10 meters

This device complies with part 15 of the FCC Rules. Operation is subject to the following two conditions: (1) this device may not cause harmful interference, and (2) this device must accept any interference received, including interference that may cause undesired operation.

Any changes or modifications not expressly approved by the party responsible for compliance could void the user's authority to operate the equipment.

NOTE: This equipment has been tested and found to comply with the limits for a Class B digital device, pursuant to Part 15 of the FCC Rules. These limits are designed to provide reasonable protection against harmful interference in a residential installation. This equipment generates, uses and can radiate radio frequency energy and, if not installed and used in accordance with the instructions, may cause harmful interference to radio communications. However, there is no guarantee that interference will not occur in a particular installation.

If this equipment does cause harmful interference to radio or television reception, which can be determined by turning the equipment off and on, the user is encouraged to try to correct the interference by one or more of the following measures:

- Reorient or relocate the receiving antenna.
- Increase the separation between the equipment and receiver.
- Connect the equipment into an outlet on a circuit different from that to which the receiver is connected.
- Consult the dealer or an experienced radio/TV technician for help.

The device has been evaluated to meet general RF exposure requirement. The device can be used in portable exposure condition without restriction