

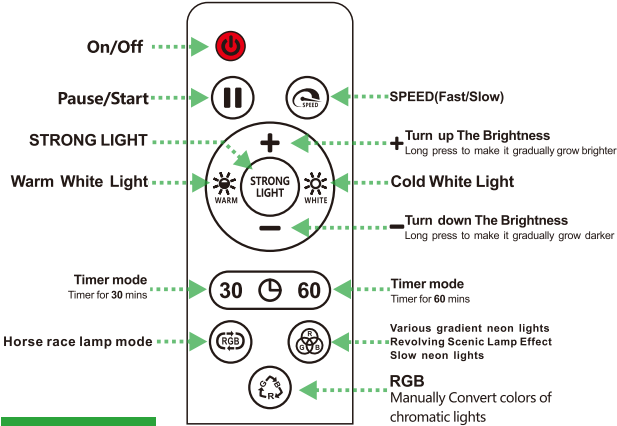
The Best Choice For Your Sweet Home



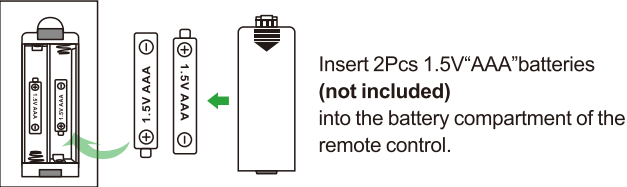
SPECIFICATION

|                   |                                |
|-------------------|--------------------------------|
| Name              | LED Slim Waist Floor Lamp      |
| Material          | Metal + Tyvek/Dupont + Plastic |
| Color             | White                          |
| Wattage           | 8W / 16W                       |
| Luminous Flux     | 1600LM / 800LM / 300LM         |
| Dimmable          | Yes (5%-100% dimming)          |
| Color Temperature | 2500K, 4500K, 6500K            |
| Lifespan          | 40,000Hrs                      |
| Adapter Voltage   | DC12V 1A                       |
| Voltage Input     | AC100-240V 50/60Hz             |
| Protection class  | IP20                           |

RF MULTIFUNCTIONAL REMOTE CONTROL  
(Directions for use)

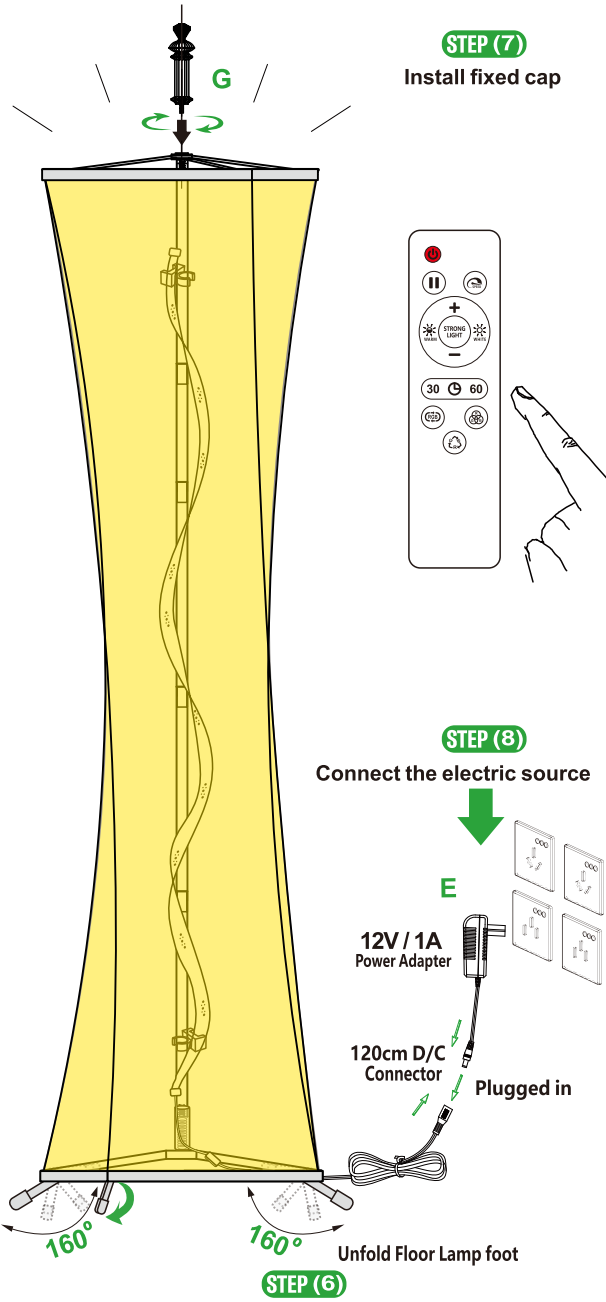


BATTERIES MOUNTING



Instructions(Check All Items of The Lamp)

1. The remote control needs to be equipped with 2pcs 1.5V AAA batteries (not included, additional purchase required).
2. Connect the DC connector to the light strip and then plug the white 12V/1A power adapter into the socket. The warm white light will light up immediately.
3. The remote control has memory function. It can remember the last lighting effect after turning off the light. When it is turned on, the light will appear the same as the last time.
4. \* **WHITE** \* Cold white light, can be used to illuminate.  
\* **WARM** \* Warm white light, can be used to illuminate.  
\* **STRONG LIGHT** \* Strong Light(WARM+WHITE) can be used to illuminate.
5. \* **+** \* Turn up the brightness, long press to make it gradually grow brighter.  
\* **-** \* Turn down the brightness, long press to make it gradually grow darker.
6. \* **RGB** \* Manually convert colors of chromatic lights mode.
7. \* **RGB** \* Automatic fast flash & slow flash of chromatic lights(Horse race lamp).
8. \* **Various gradient neon lights, revolving scenic lamp effect, Slow neon lights.**
9. \* **Timer for 30 mins** \* Timer for 60 mins
10. \* **ON/OFF** \* Pause/Start
11. \* **Horse race lamp mode.**



Warm tips:

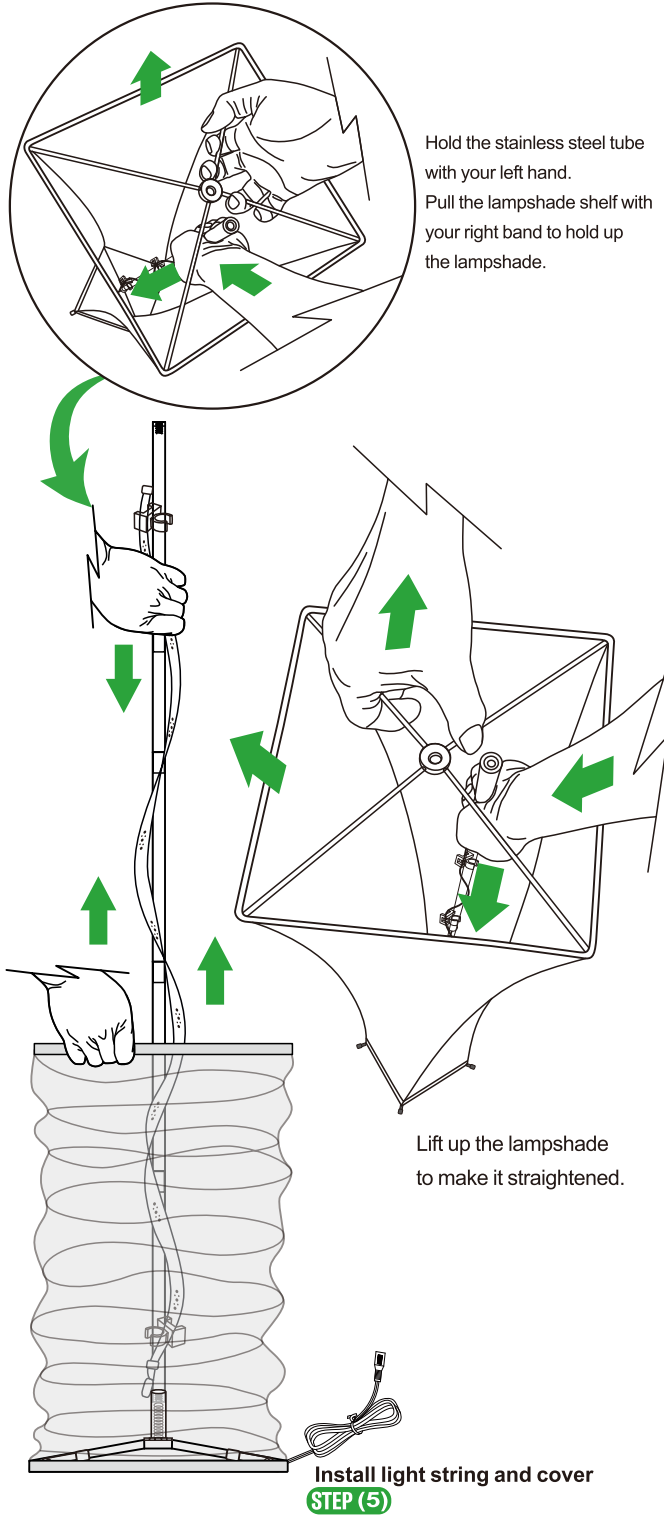
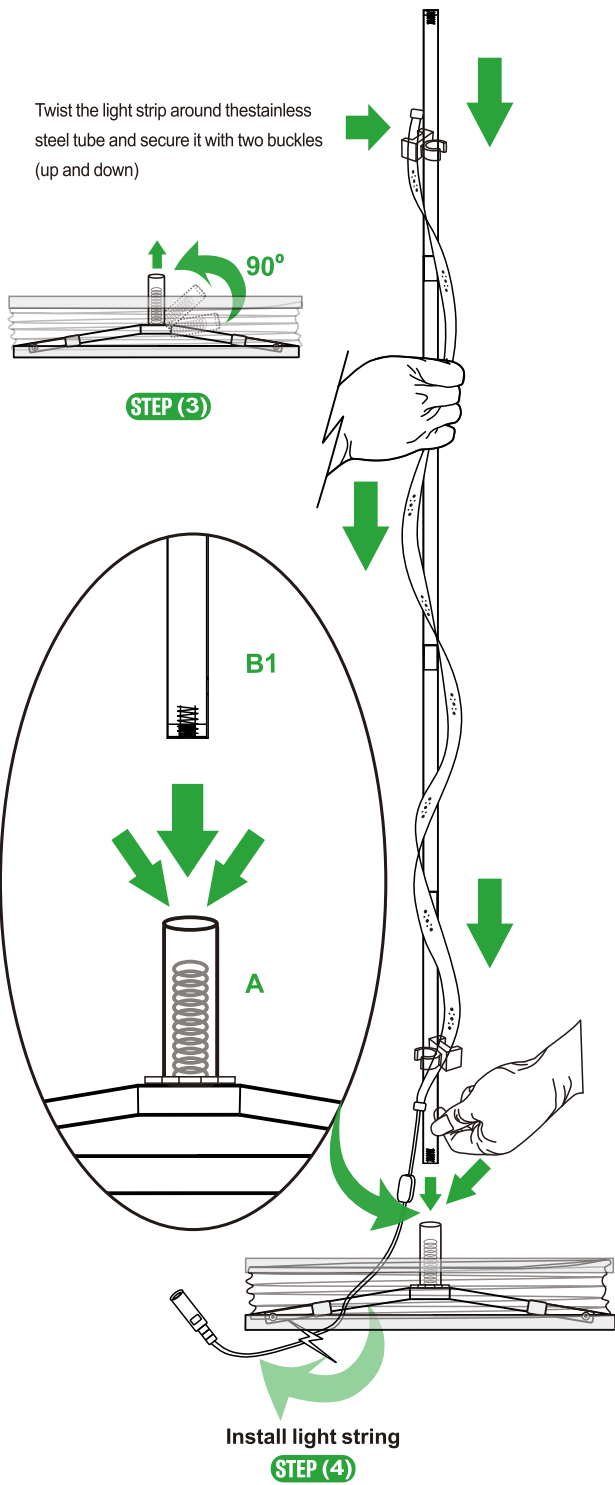
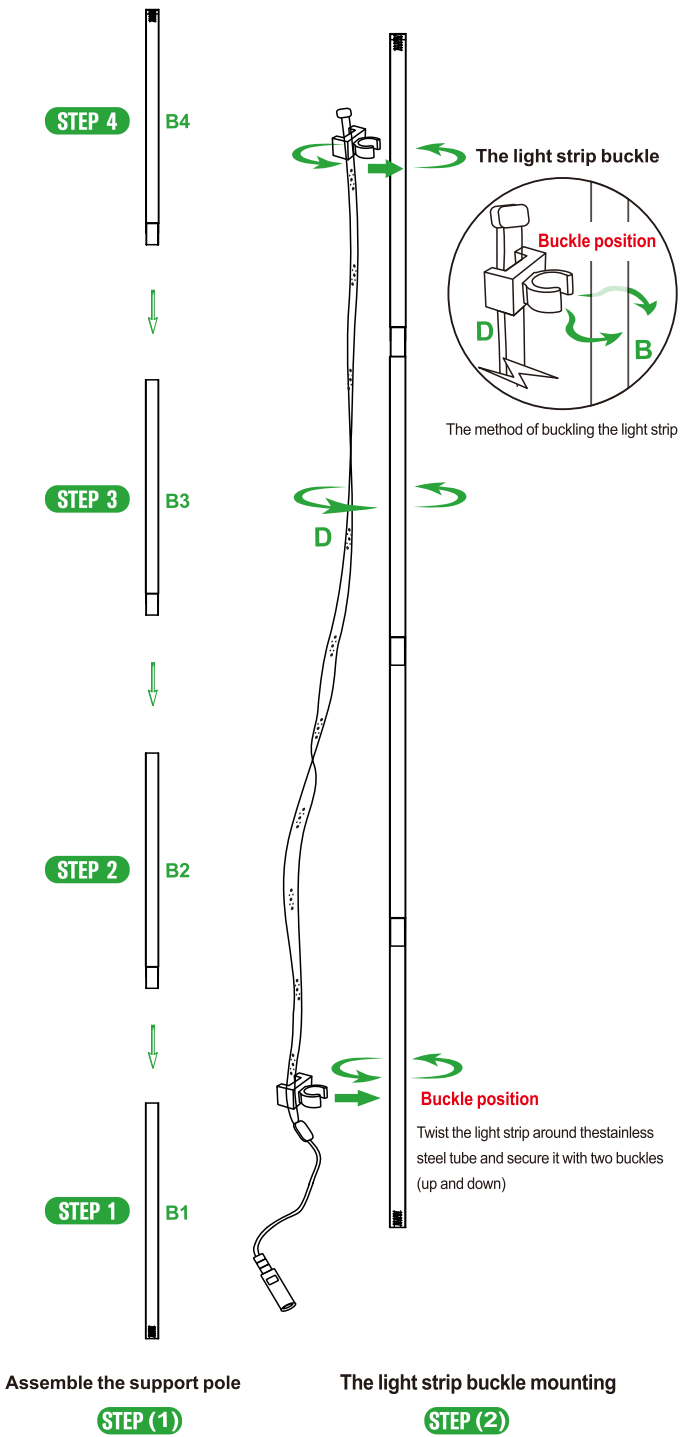
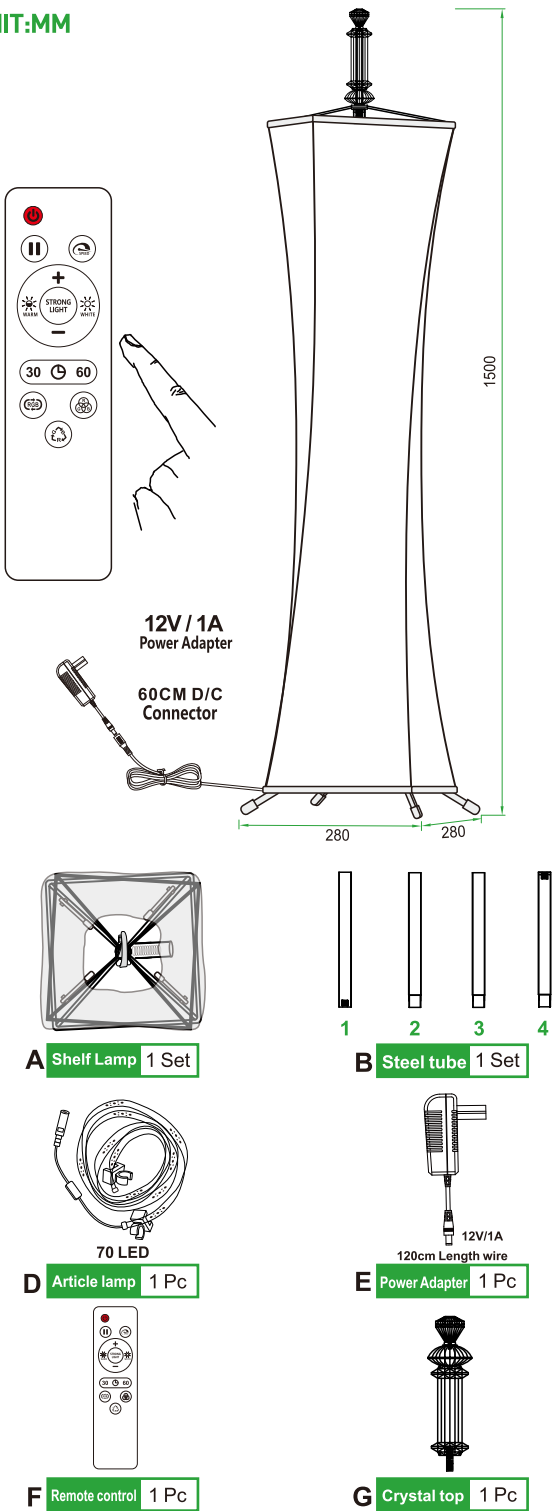
- 1) Must be cut off the power before installation and replacement, operation, and away from flammable objects.
- 2) Can be used for lighting.
- 3) When abnormal work of lamps and lanterns, must cut off power supply first, then check whether the circuit connection is strong, and the power supply voltage is stable.
- 4) No covering on surface on lamp. Not suitable for use in sealed lamps.
- 5) The lamps and lanterns of indoor use only.

User Manual



LED Slim Waist Floor Lamp  
Made in China

UNIT:MM



## FCC WARNING

This device complies with part 15 of the FCC Rules. Operation is subject to the following two conditions: (1) this device may not cause harmful interference, and (2) this device must accept any interference received, including interference that may cause undesired operation.

Any changes or modifications not expressly approved by the party responsible for compliance could void the user's authority to operate the equipment.

NOTE: This equipment has been tested and found to comply with the limits for a Class B digital device, pursuant to Part 15 of the FCC Rules. These limits are designed to provide reasonable protection against harmful interference in a residential installation. This equipment generates, uses and can radiate radio frequency energy and, if not installed and used in accordance with the instructions, may cause harmful interference to radio communications. However, there is no guarantee that interference will not occur in a particular installation.

If this equipment does cause harmful interference to radio or television reception, which can be determined by turning the equipment off and on, the user is encouraged to try to correct the interference by one or more of the following measures:

- Reorient or relocate the receiving antenna.
- Increase the separation between the equipment and receiver.
- Connect the equipment into an outlet on a circuit different from that to which the receiver is connected.
- Consult the dealer or an experienced radio/TV technician for help.

To maintain compliance with FCC's RF Exposure guidelines, This equipment should be installed and operated with minimum distance between 20cm the radiator your body: Use only the supplied antenna.