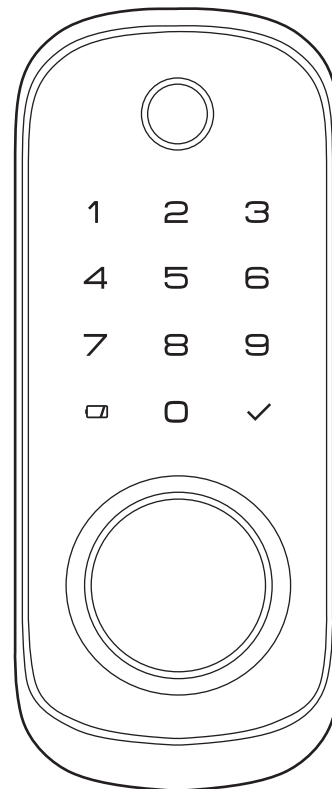


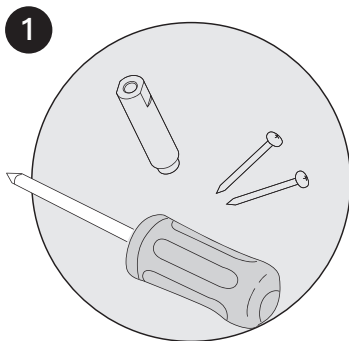
KW217

WiFi Smart Lock

Installation Guide / Quick Start Guide



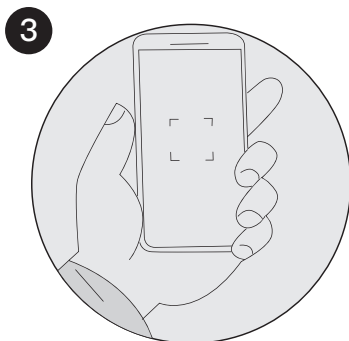
Thank you for purchasing our products. Please review this manual thoroughly before operating your device.
All pictures in this manual are for illustration purpose only. Actual product may vary due to product upgrade.



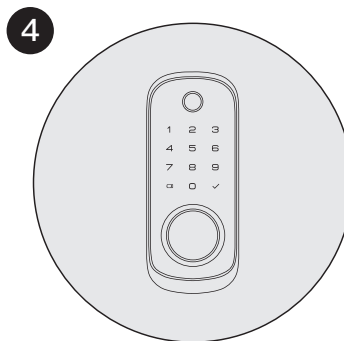
Following the installation instruction to install the smart lock.



Download KK Home App.



Register and Log in KK Home App, add device by scanning QR code on the device.



Calibrate the smart lock and Complete Bluetooth & Wi-Fi settings in the App.

Installation Guide

△Read this manual carefully before installing and operating!

- P 3 STEP 1: Prepare the door and check dimensions
- P 4 STEP 2: Install the latch and strike
- P 6 STEP 3: Install exterior assembly
- P 7 STEP 4: Install interior assembly
- P 8 STEP 5: Install Door Sensor

Quick Start Guide

- P 9 At a Glance
- P10 Definitions
- P 11 How to Lock/Unlock
- P 12 Quick set up
- P 13 Download KK Home App
- P14 FCC Statement & Caution!
- P15 FCC Radiation Exposure Statement
Industry Canada Statement
Warnings

TOOL REQUIRED:



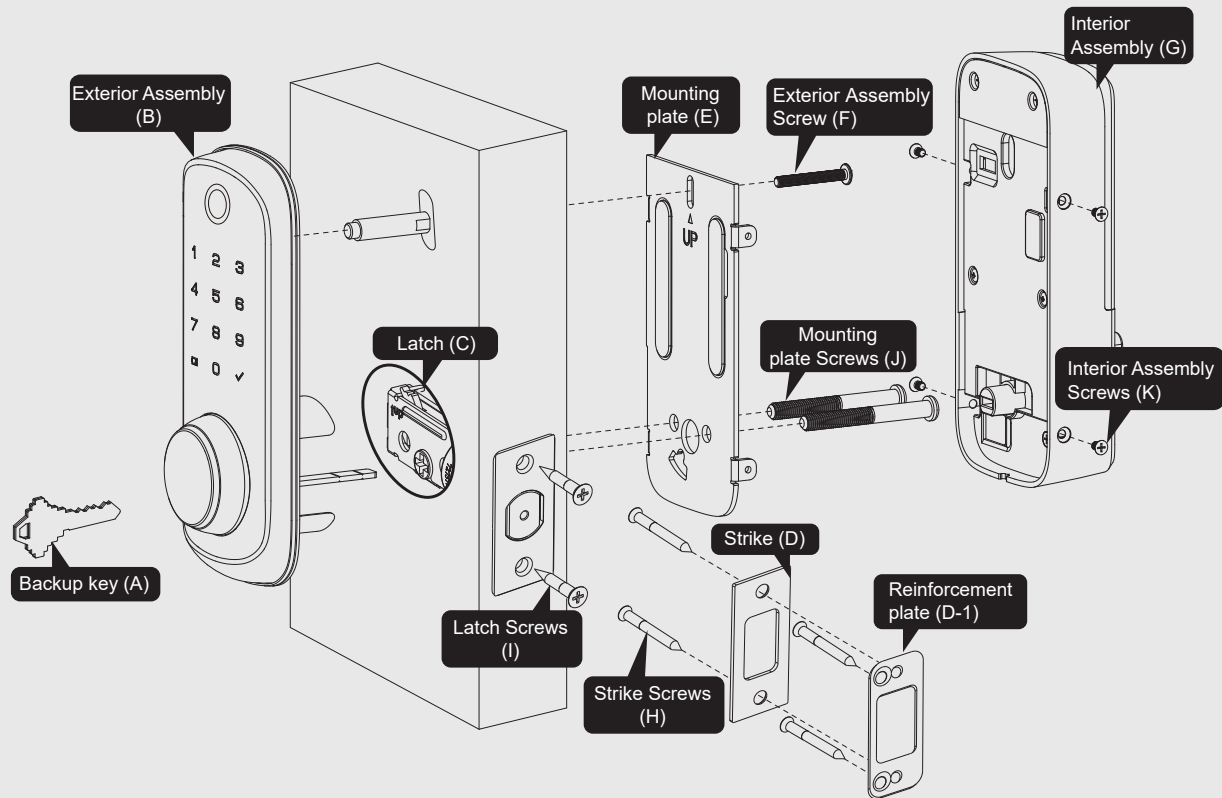
Do not use an electric screwdriver during installation.



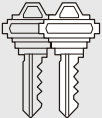






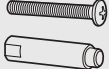

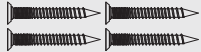



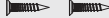
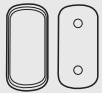
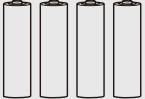
IMPORTANT:

Do not load batteries until lock is completely installed.

INSTALLATION OVERVIEW



Parts List

<p>A Backup Key x2</p> 	<p>B Exterior Assembly x1</p> 	<p>C Latch x1</p>  <p>C-1 Drive-In Collar (Optional)</p> 	<p>D Strike x1</p>  <p>D-1 Reinforcement Plate x1 (optional)</p> 
<p>E Mounting Plate x1</p> 	<p>F Exterior Assembly Screw (Optional)</p> 	<p>G Interior Assembly x1</p> 	<p>H Strike Screws x4</p>  <p>I Latch Screws x2</p> 
<p>J Mounting plate Screws x2</p>  <p>(38mm<door thickness<54mm)</p>	<p>K Interior Assembly Screws x4</p>  <p>L Door Sensor Screws x2</p> 	<p>M Door Sensor x1</p> 	<p>N AA lithium battery x4</p> 

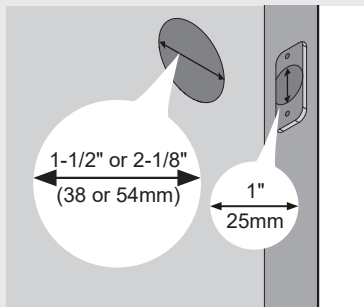
If any parts are missing or damaged, please contact Customer Support.

1 Prepare the door and check dimensions

A

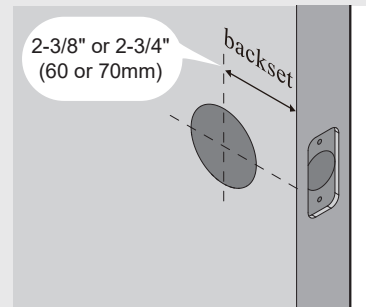
Measure to confirm that the hole in the door is 1-1/2" or 2-1/8" (38mm or 54mm)

Measure to confirm that the hole in the door edge is 1" (25mm).



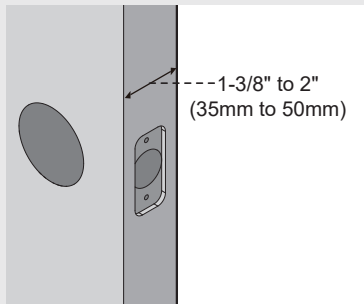
B

Measure to confirm that the backset is either 2-3/8" or 2-3/4" (60 or 70mm)



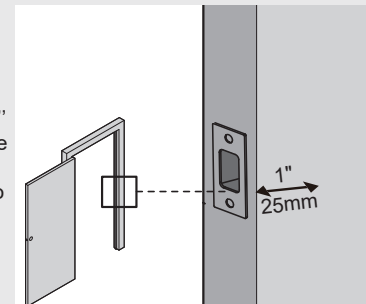
C

Measure to confirm that the door is 1-3/8" to 2" (35 mm to 50mm) thick.



D

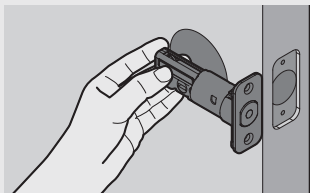
Make sure the hole in the door frame is drilled a minimum of 1" (25mm) deep, to leave enough space for the deadbolt to extend into the door frame when the door is locked.



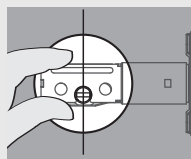
Notes: Make sure the door frame is aligned with the door.
There are no obstructions stuck in the door frame.

2 Install the latch and strike

A Determine backset and adjust the latch

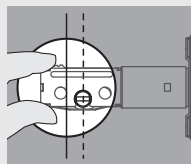


Hold the latch in front of the door hole, with the latch face flush against the door edge. Is the slotted hole centered in the door hole?



YES

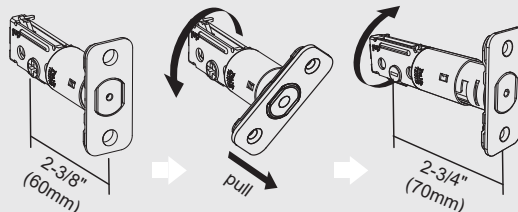
No adjustment is required.
Proceed to next step.



NO

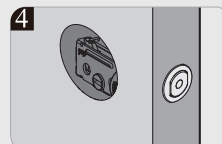
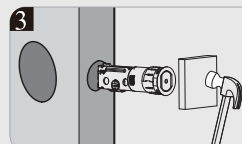
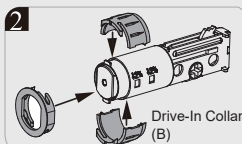
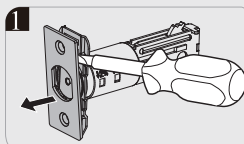
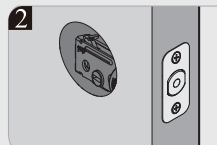
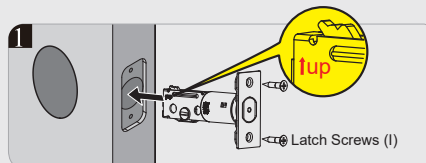
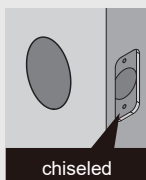
Slotted hole is
NOT centered.

Rotate and pull the
latch as shown to
extend latch.

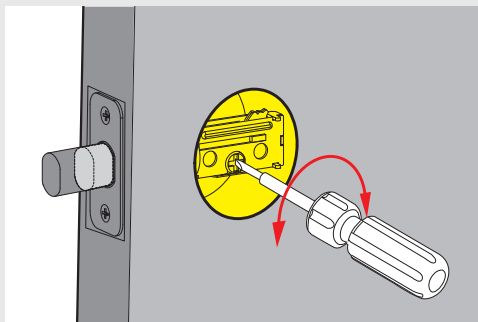


B

Install the latch



- C** Use a screwdriver to test if deadbolt works smoothly.

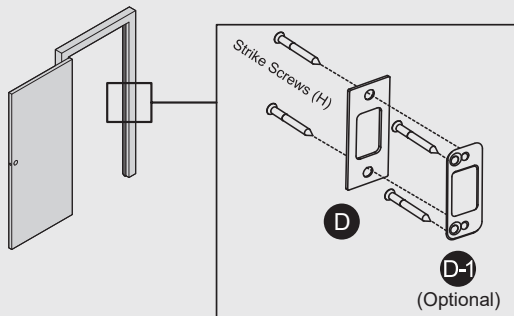


- D** Install strike on the door frame.



IMPORTANT:

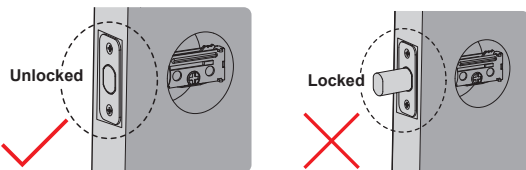
Make sure the hole in door frame is drilled a minimum of 1" (25mm) deep.



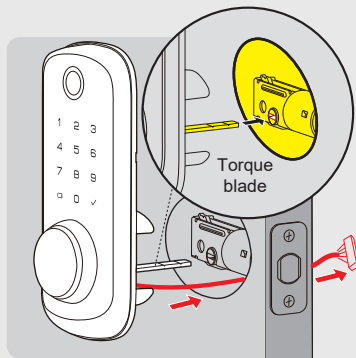
Install exterior assembly

**IMPORTANT:**

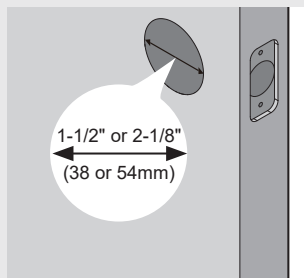
Before installation, make sure the latch is fully retracted (in the unlocked position)



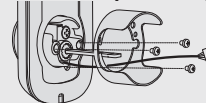
- B** With the latch fully retracted (in the unlocked position), route the cable below the latch, and insert the torque blade through the slot in the latch.



- A** Measure the diameter of the hole in the door.



1-1/2" (38mm)

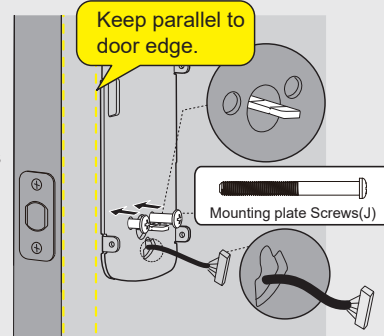


Remove the spacer

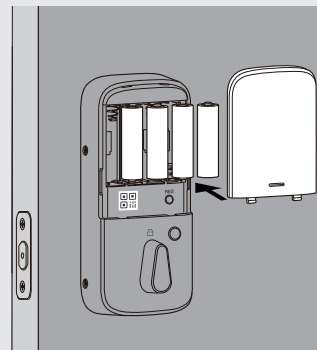
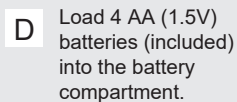
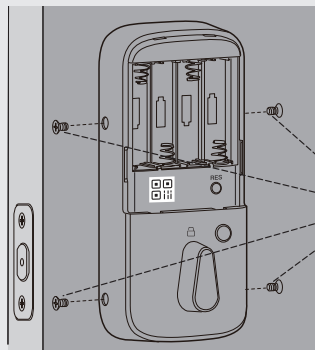
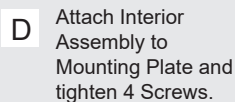
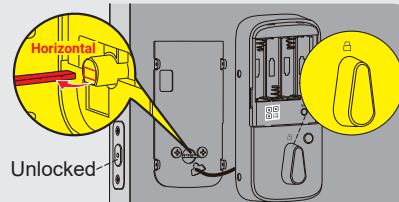
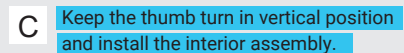
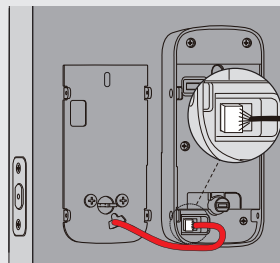
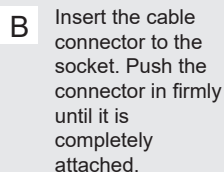
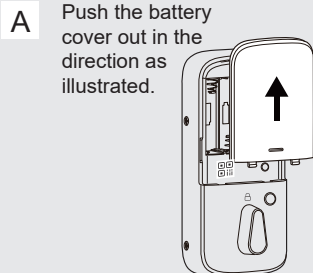
2-1/8 (54mm)

Proceed to next step

- C** Secure the mounting plate with the supplied screws. Short Mounting plate screws are applied to the door with thickness of 35mm-45mm. Long Mounting screws are applied to the door with thickness of 45mm-50mm. Do not overtighten screws.



4 Install interior assembly



STEP

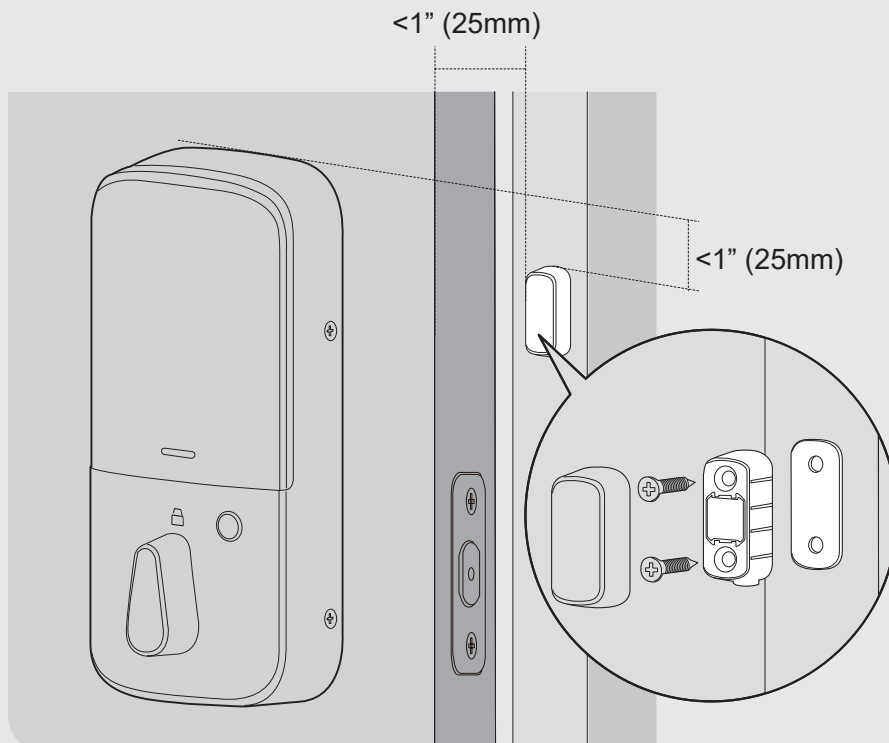
5

Install Door Sensor



IMPORTANT:

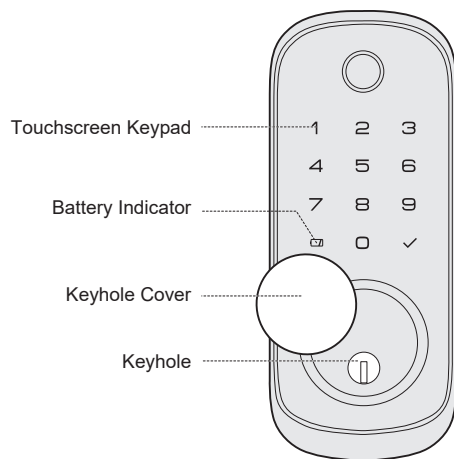
Door sensor should be mounted within 1" (25mm) from the edge of your door, within 1" (25mm) from the top of the interior assembly.



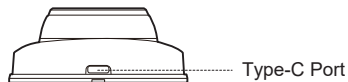
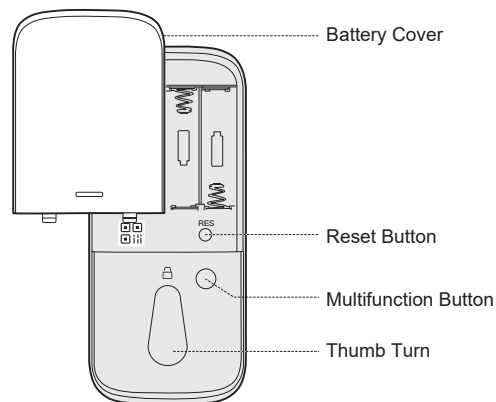
QUICK START GUIDE

At a Glance

Exterior Assembly



Interior Assembly



Definitions

- ***Wrong Entry Limit***

After 5 unsuccessful attempts at entering an invalid PIN code, the unit will shut down for 3 minutes.

- ***One Touch Locking***

Press and hold any key on the keypad for at least 2 seconds to lock the door from outside.

- ***Battery Indicator***

The Battery Indicator will turn Red if the battery is running lower than 20%. Please replace the batteries as soon as possible.

- ***Reset Button***

Push and hold the Reset Button for 5 seconds to reset your device. After resetting, the lock will be restored to factory default settings, all settings will be disabled.

- ***Multi-function Button***

Push and hold the Multi-function button on the inside panel for 3 seconds to enable Privacy Mode.

In Privacy model, all user codes access will be disabled.




The Privacy Mode will be disabled automatically after unlocking the device from inside with the Thumb Turn from inside or from outside with Mechanical Key.

- ***Type-C Port***


Power the smart lock with a portable charger via Type-C port when the batteries are completely dead.

How to Lock / Unlock

UNLOCK the door from outside

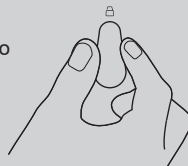
1	2	3
Master/User code	Geo-fence Unlock	Key Unlock
		

LOCK the door from outside

1	2	3
Auto Lock Mode In Auto Lock mode, the bolt will extend out automatically in 30 seconds after unlocking.	One touch Lock Press any key on keypad for 2 seconds.	Key Lock
		

UNLOCK the door from inside

Rotate the thumb turn to Unlock position.



LOCK the door from inside

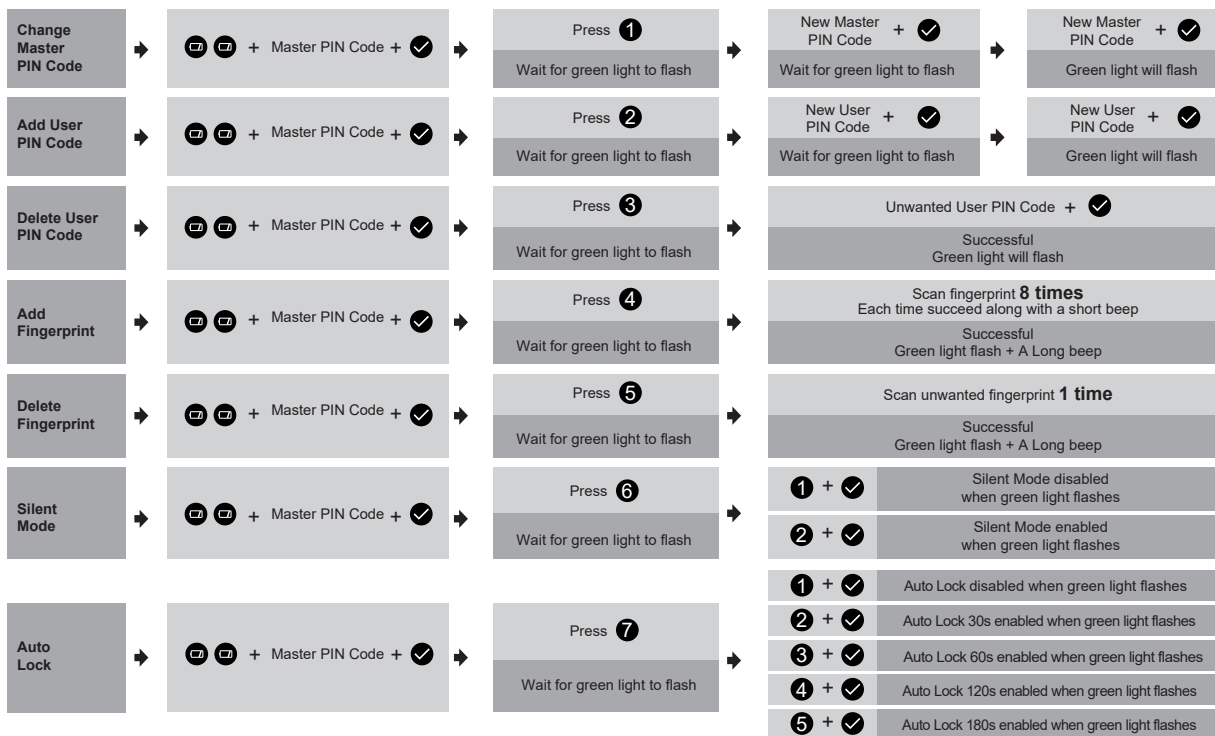
1	2
Auto Lock Mode In Auto Lock mode, the device will be locked automatically.	Rotate the thumb turn to Locked Position.



IMPORTANT:

The default Master Code is **12345678**. It is required that you change it to a code of your own before programming.

Quick Set Up



Notes:

1. Beeps only sound when the Silent Mode is disabled.
2. If the indicator light flashes red, your setting failed and you will need to redo the operation.

Download KK Home App

Download KK Home App from the App store or Google Play.



Quick Set Up Tips

- Register an account in KK Home App
- Scan QR code on the inside panel to add KWFP01 to the device list
- Follow the setup steps to get started.

! IMPORTANT:

- The Auto Lock is disabled by default, please complete the set up process and enable Auto Lock in App.
- The administrator of the lock will be the first account to bind it by default. The administrator account have access to manage users of the lock.
- To reset the smart lock, please press and hold the Reset button on the interior panel for 5 seconds.
Log in the App with Administrator account, go to setting and unbind the lock. (This step is required, if the administrator account didn't unbind the device, the lock won't be able to be repaired by other accounts.)

FCC Statement

This equipment has been tested and found to comply with the limits for a Class B digital device, pursuant to part 15 of the FCC Rules. These limits are designed to provide reasonable protection against harmful interference in a residential installation. This equipment generates, uses and can radiate radio frequency energy and, if not installed and used in accordance with the instructions, may cause harmful interference to radio communications. However, there is no guarantee that interference will not occur in a particular installation. If this equipment does cause harmful interference to radio or television reception, which can be determined by turning the equipment off and on, the user is encouraged to try to correct the interference by one or more of the following measures:

- Reorient or relocate the receiving antenna.
- Increase the separation between the equipment and receiver.
- Connect the equipment into an outlet on a circuit different from that to which the receiver is connected.
- Consult the dealer or an experienced radio/TV technician for help.

Caution!

Any changes or modifications not expressly approved by the party responsible for compliance could void the user's authority to operate the equipment.

Canada Statement

This device contains licence-exempt transmitter(s)/receiver(s) that comply with Innovation, Science and Economic Development Canada's licence-exempt RSS(s). Operation is subject to the following two conditions:

- (1) This device may not cause interference.
- (2) This device must accept any interference, including interference that may cause undesired operation of the device.

In order to avoid the possibility of exceeding the ISED radio frequency exposure limits, human proximity to the antenna shall not be less than 20cm (8 inches) during normal operation.

Le présent appareil est conforme aux CNR d'Industrie Canada applicables aux appareils radio exempts de licence. L'exploitation est autorisée aux deux conditions suivantes:

- (1) l'appareil ne doit pas produire de brouillage.
- (2) l'utilisateur de l'appareil doit accepter tout brouillage radioélectrique subi, même si le brouillage est susceptible d'en compromettre le fonctionnement.

Afin d'éviter la possibilité de dépasser les limites d'exposition aux fréquences radio ISED, la proximité humaine de l'antenne ne doit pas être inférieure à 20 cm (8 pouces) pendant le fonctionnement normal.

FCC Radiation Exposure Statement

This device complies with FCC radiation exposure limits set forth for an uncontrolled environment. This equipment must be installed and operated in accordance with provided instructions and the antenna(s) used for this transmitter must be

installed to provide a separation distance of at least 20 cm from all persons.

This device complies with Part 15 of the FCC Rules.

Operation is subject to the following two conditions:

- (1) this device may not cause harmful interference, and
- (2) this device must accept any interference received, including interference that may cause undesired operation.

RF Exposure Information

This equipment complies with FCC radiation exposure limits set forth for an uncontrolled environment. This equipment should be installed and operated with minimum distance 20cm between the radiator and your body.

Industry Canda Statement

Under Industry Canada regulations, this radio transmitter may only operate using an antenna of a type and maximum (or lesser) gain approved for the transmitter by Industry Canada. To reduce potential radio interference to other users, the antenna type and its gain should be so chosen that the equivalent isotropically radiated power (e.i.r.p.) is not more than that permitted for successful communication.

Warnings

Failure to follow the below instructions could result in damage to the product and void the factory warranty.

This manufacturer advises that no lock can provide complete security by itself.

This lock may be defeated by forcible or technical means, or evaded by entry elsewhere on the property.

No lock can substitute for caution, awareness of your environment, and common sense.

Product Care:

- This lockset is designed to provide the highest standard of product quality and performance. Care should be taken to ensure a long-lasting finish. When cleaning is required, use a soft, damp cloth. Using lacquer thinner, caustic soaps, abrasive cleaners or polishes could damage the coating and result in tarnishing.
- Avoid exposure to direct sunlight. Long-term exposure to direct sunlight may damage the lock.

Do not install batteries until the lock is completely installed on door.

- User Pin Codes: Can be 4-10 digits and can be set up in KK Home App.
- Door sensor calibration: To calibrate your door, please follow the instruction in App step by step. Once it's calibrated successfully, you could try detect the status of your door in KK Home.
- Share your device: Share your device means that you share the access to track the device with your other users, please be aware of the potential risks it may cause.