

Quick Start Guide

Apply to: Reolink Duo Floodlight WiFi

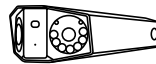
58.03.001.0287

  @ReolinkTech <https://reolink.com>

Contents

What's in the Box	2
Camera Introduction	3
Connection Diagram	5
Set up the Camera	6
Mount the Camera	7
Specification	12
Notification of Compliance	12

What's in the Box



Camera



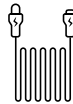
Antenna *



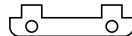
Power Adapter *



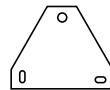
1M
Ethernet Cable



4.5M Power
Extension Cable *



Mounting Plate



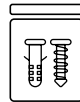
Mounting Hole
Template



Quick Start Guide



Surveillance Sign



Pack of Screws



Floodlight

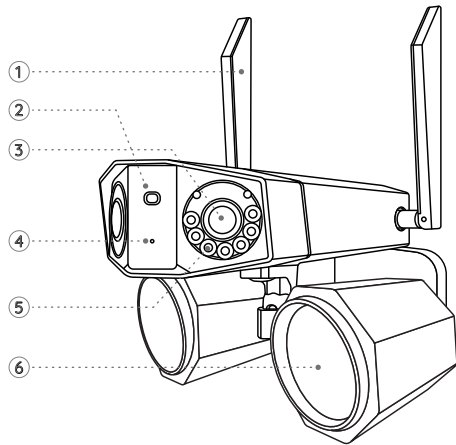
NOTE:

* The power adapter, antennas, and 4.5m power extension cable only come with the WiFi version.

Camera Introduction

WiFi Camera

1	Antenna
2	Daylight Sensor
3	Lens
4	Mic
5	Infrared Lights
6	Floodlight

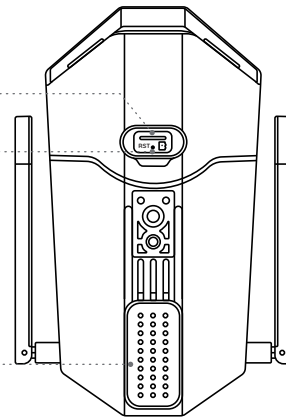


Micro SD Card Slot

Reset Button

*Press the reset button with a pin to restore factory settings.

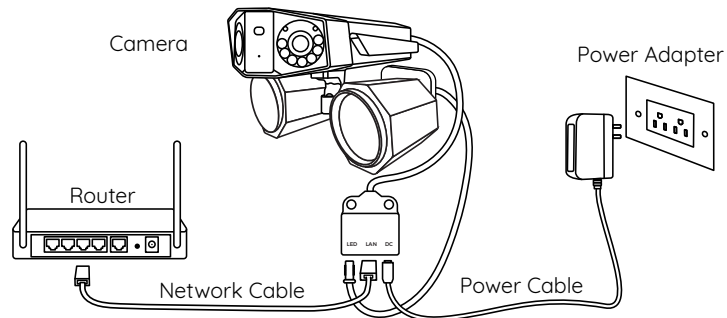
Speaker



Connection Diagram

Before initial setup, follow the steps below to connect your camera.

1. Connect the camera to a LAN port on your router with an Ethernet cable.
2. Use the power adapter to power on the camera.



Set up the Camera

Download and Launch the Reolink App or Client software, and follow the onscreen instructions to finish initial setup.

• On Smartphone

Scan to download the Reolink App.



• On PC

Download path of the Reolink Client: Go to <https://reolink.com> > Support > App & Client.

NOTE:

- When setting up the WiFi camera, you need to follow the onscreen instructions to finish the WiFi configuration first.

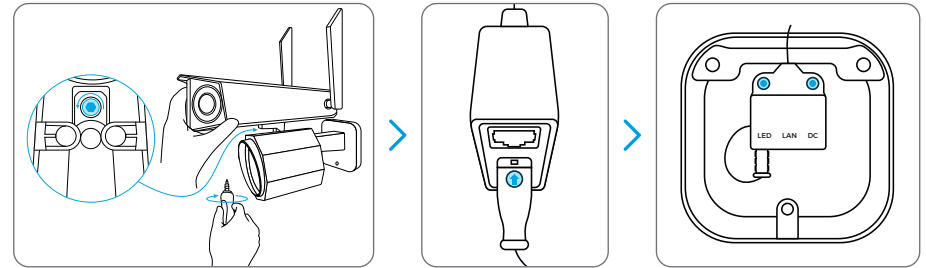
Mount the Camera

Installation Tips

- Do not face the camera towards any light sources.
- Do not point the camera towards a glass window. Or, it may result in poor image quality because of the window glare by infrared LEDs, ambient lights or status lights.
- Do not place the camera in a shaded area and point it towards a well-lit area. Or, it may result in poor image quality. To ensure best image quality, the lighting condition for both the camera and the capture object shall be the same.
- To ensure better image quality, it's recommended to clean the lens with a soft cloth from time to time.
- Make sure the power ports are not directly exposed to water or moisture and not blocked by dirt or other elements.
- With IP waterproof ratings, the camera can work properly under conditions like rain and snow. However, it doesn't mean the camera can work underwater.
- Do not install the camera at places where rain and snow can hit the lens directly.
- Try to keep the left lens level with the right lens.

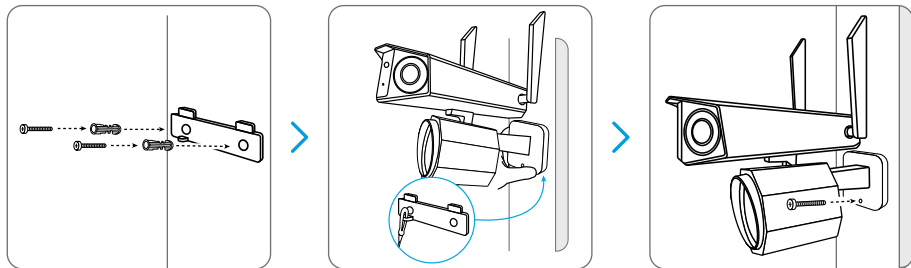
Fix the Floodlight to the Camera

Fix the floodlight to the camera before mounting the camera.



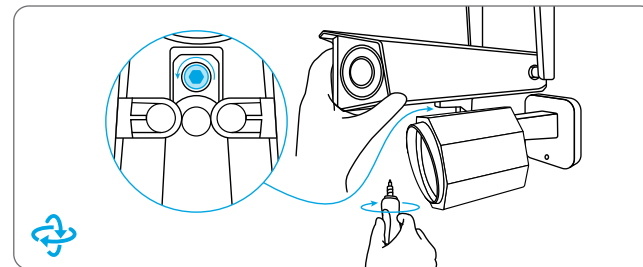
1. Screw the floodlight to the camera.
2. Connect the wire from the floodlight to the wire from the camera. Make sure the side of the wire from the floodlight with an arrow mark on it faces the LAN port, as shown in the picture.
3. Tuck the wires into the mounting bracket.

Mount the Camera to the Wall

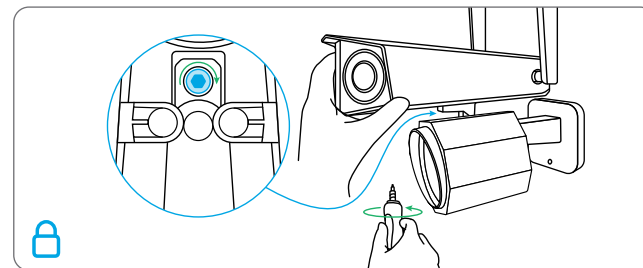


1. Drill holes in accordance with the mounting template.
2. Secure the mounting plate to the wall with two screws.
3. Connect the steel wire rope in the mounting bracket to the mounting plate, and hang the camera on the mounting plate.
4. Drill into the wall in accordance with the hole on the mounting bracket. Lock the camera in position with a screw.

NOTE: Use the drywall anchors included in the package if needed.

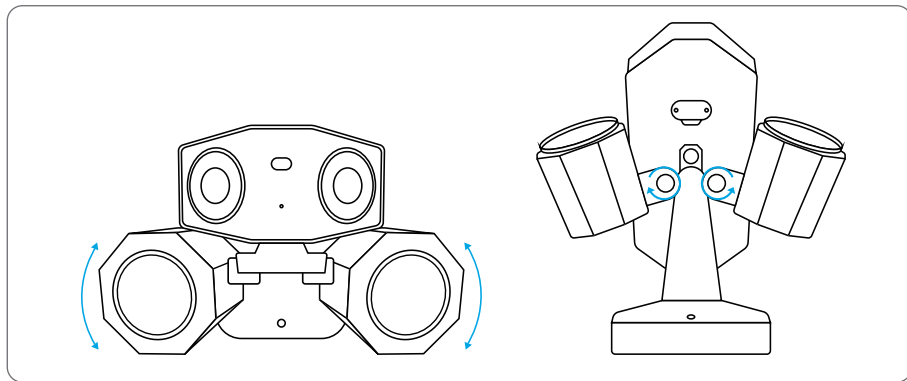


To get the best field of view, loosen the adjustment screw on security mount and turn the camera.



Stiffen the adjustment screw to lock the camera.

Adjust the Floodlights



You can adjust the floodlights manually before or after mounting the camera.

Specification

Hardware Features

Infrared Night Vision: Up to 30 meters

Floodlight: 40pcs/15W/4200K/2000 lumens

Day/Night Mode: Auto switchover

Angle of View: Horizontal: 180°, vertical: 60°

General

Dimension: 195x 103x 56 mm

Weight: 700g

Operating Temperature:

-10°C~+55°C (14°F~131°F)

Operating Humidity: 10% ~ 90%

For more specifications, visit

<https://reolink.com/>.

Notification of Compliance

FCC Compliance Statement

This device complies with Part 15 of the FCC Rules. Operation is subject to the following two conditions:

this device may not cause harmful interference, and this device must accept any interference received, including interference that may cause undesired operation.

NOTE: This equipment has been tested and **found** to comply with the limits for a Class B digital device, pursuant to part 15 of the FCC Rules. These limits are designed to provide reasonable protection against harmful interference in a residential installation. This equipment generates uses and can radiate radio frequency energy and, if not installed and used in accordance with the instructions, may cause harmful interference to radio communications. However, there is no guarantee that interference will not occur in a particular installation. If this equipment does cause harmful interference to radio or television reception, which can be determined by turning the equipment off and on, the user is encouraged to try to correct the interference by one or more of the following measures:

- Reorient or relocate the receiving antenna.
- Increase the separation between the equipment and receiver.
- Connect the equipment into an outlet on a

circuit different from that to which the receiver is connected.

- Consult the dealer or an experienced radio/TV technician for help.

Changes or modifications not expressly approved by the party responsible for compliance could void the user's authority to operate the equipment.

FCC RF Exposure Warning Statements

This equipment complies with FCC radiation exposure limits set forth for an uncontrolled environment. This equipment shall be installed and operated with minimum distance 20cm between the radiator & body.

Simplified EU Declaration of Conformity

Reolink declares that the WiFi floodlight is in compliance with the essential requirements and other relevant provisions of Directive

2014/53/EU, the PoE floodlight is in compliance with Directive 2014/30/EU.



Correct Disposal of This Product

This marking indicates that this product should not be disposed with other household wastes throughout the EU. To prevent possible harm to the environment or human health from uncontrolled waste disposal, recycle it responsibly to promote the sustainable reuse of material resources. To return your used device, please use the return and collection systems or contact the retailer where the product was purchased. They can take this product for environmentally safe recycling.

Limited Warranty

This product comes with a 2-year limited warranty that is valid only if purchased from Reolink Official Store or a Reolink authorized reseller. Learn more: <https://reolink.com/warranty-and-return/>.

NOTE: We hope that you enjoy the new purchase. But if you are not satisfied with the product and plan to return, we strongly suggest that you reset the floodlight to factory default settings before returning.

Terms and Privacy

Use of the product is subject to your agreement to the Terms of Service and Privacy Policy at reolink.com. Keep out of reach of children.

End User License Agreement

By using the Product Software that is embedded on the Reolink product, you agree to the terms of this End User License Agreement ("EULA") between you and Reolink. Learn more: <https://reolink.com/eula/>.

ISED Statements

This device contains licence-exempt transmitter(s)/receiver(s) that comply with Innovation, Science and Economic

Development Canada’s licence-exempt RSS(s).
Operation is subject to the following two conditions:

- (1) This device may not cause interference.
- (2) This device must accept any interference, including interference that may cause undesired operation of the device.

L’émetteur/récepteur exempt de licence contenu dans le présent appareil est conforme aux CNR d’Innovation, Sciences et Développement économique Canada applicables aux appareils radio exempts de licence. L’exploitation est autorisée aux deux conditions suivantes:

- (1) L’ appareil ne doit pas produire de brouillage;
- (2) L’ appareil doit accepter tout brouillage radioélectrique subi, même si le brouillage est susceptible d’ en compromettre le fonctionnement.

**Radio Frequency Exposure
Statement for IC**

The device has been evaluated to meet general RF exposure requirements. The device can be used in mobile exposure conditions. The min separation distance is 20cm.

Déclaration d’exposition aux radiofréquences pour IC
L’appareil a été évalué pour répondre aux exigences générales en matière d’exposition aux RF. L’appareil peut être utilisé dans des conditions d’exposition mobiles. La distance de séparation minimale est de 20cm.
Operation of this device is restricted to indoor use only. (5180-5240MHz)
Le fonctionnement de cet appareil est limité à une utilisation en intérieur uniquement. (5180-5240MHz)

Cet émetteur radio IC : 26839-2208B a été approuvé par Innovation, Sciences et Développement économique Canada pour fonctionner avec les types d’antenne énumérés ci-dessous, avec le gain maximal admissible indiqué. Les types d’antenne non inclus dans cette liste qui ont un gain supérieur au gain maximum indiqué pour tout type répertorié sont strictement interdits pour une utilisation avec cet appareil.
The radio transmitter IC: 26839-2208B has been approved by The Ministry of Innovation, Science and Economic Development of Canada to use the following antenna types with the specified maximum allowed gain. Antenna types not included in this list, whose gain is higher than the maximum gain of any type listed, are strictly prohibited from use with this device.

Type of antenna	External antenna
Antenna Gain	2400-2500(2.77dBi) 5150-5850(3.83dBi)
Impedance	50Ohm
Manufacture	Shenzhen Be-Comfortable Technology Co. Ltd

