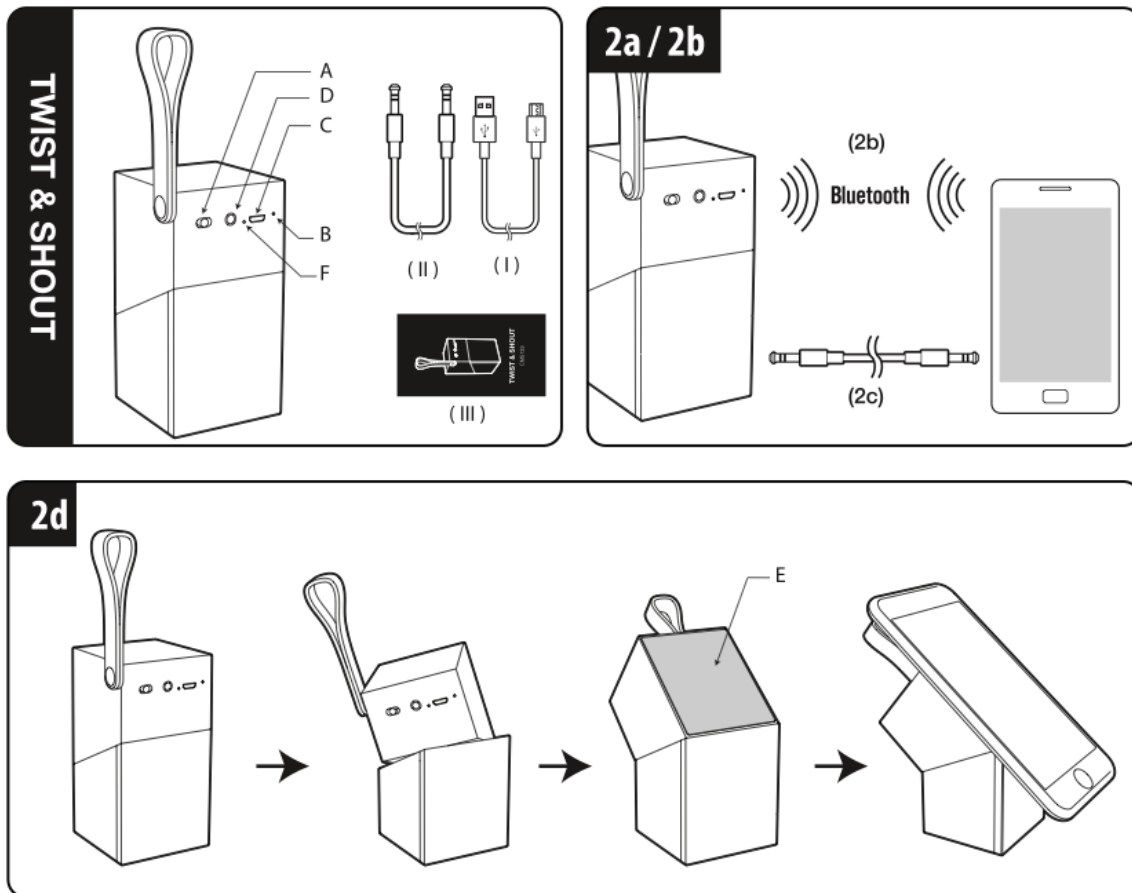


# Instruction Manual



## 1. Specification:

Product Size: 52 x 52 x 115 mm

Weight: 280g

Loudspeaker: 40mm / 4Ω

Rated Power: 3W

Interface: Micro USB DC in, Ø3.5mm audio in

### Bluetooth Parameter:

Operation Frequency: 2.402GHz - 2.480GHz

Power Output (Peak) : Class 2/3 dbm

Receiving Sensitivity: -80db, @ 0.1% BER

Operation Range: Around 10m

**Battery Parameter:**

Capacity: 400mA, 3.7V, Polymer Li-ion Battery  
Music Playback time: 4.5 Hours at 70% volume  
Charging Standard: DC 5V, 500mA  
Charging time: 1.5-2 hours

**Accessory:**

USB charging cable x 1pcs  
Audio in cable x 1pcs  
Instruction manual x 1pcs

## 2. Operation Instructions

- ① Power switch: on/off
- ② Audio Line-in button
- ③ Mic: Serve as microphone during hands-free call
- ④ Micro USB charging port
- ⑤ Ø3.5mm Audio in
- ⑥ LED Indicator: Built-in battery indicator

- \*Red light on - In charging
- \* Light off - Full charged
- \* Blue light on - Play by audio in
- \* Blue light flashing quickly - Bluetooth Paring
- \* Blue light flashing slowly - Bluetooth paring successfully

**Play via Computer / Mobile phone in Bluetooth state:**

- Turn on the power of speaker
- Activate Bluetooth in Phone or Computer
- Search the speaker, name "DSBT010"
- Pairing
- Connect and Play

**Play via Computer / Mobile phone in audio line-in state:**

- Turn on the power of speaker
- Connect speaker to Phone or Computer via the audio in cable and then play.

## 3. Application

- Be applicable to all Bluetooth devices.
- Be applicable to all Ø3.5mm audio out devices
-

- **To twist the product and place phone on the speaker:**
- 1.Face to speaker mesh, it is rotated clockwise 180 degrees only
- 2.Place your phone on the rubber pad

## 4. Troubleshooting


1. The phone call could be interfered with high frequency electromagnetism. Avoid use this product under high frequency environment.
2. Bluetooth is a bidirectional transmitting protocol; transmitting distance is highly related to the audio player.
3. When the speaker cannot be connected, please delete the rest Bluetooth devices name on the list of user's computer / mobile phone. Then, follow the steps in operation instructions.
4. The sound performance could also be affected under poor signal environment, or product is low battery capacity. Please move the product to environment with strong signal or charging the product.

## FCC Warning Statement

Changes or modifications not expressly approved by the party responsible for compliance could void the user's authority to operate the equipment.

This equipment has been tested and found to comply with the limits for a Class B digital device, pursuant to Part 15 of the FCC Rules. These limits are designed to provide reasonable protection against harmful interference in a residential installation. This equipment generates uses and can radiate radio frequency energy and, if not installed and used in accordance with the instructions, may cause harmful interference to radio communications. However, there is no guarantee that interference will not occur in a particular installation. If this equipment does cause harmful interference to radio or television reception, which can be determined by turning the equipment off and on, the user is encouraged to try to correct the interference by one or more of the following measures:

- Reorient or relocate the receiving antenna.
- Increase the separation between the equipment and receiver.
- Connect the equipment into an outlet on a circuit different from that to which the receiver is connected.
- Consult the dealer or an experienced radio/TV technician for help.

When the device is used as mobile phone support , The distance between user and products should be no less than 20cm