

Cairo Internal Photos:



Figure 1.- Front



Figure 2: Back



Figure 3.- Left side



Figure 4: Right side

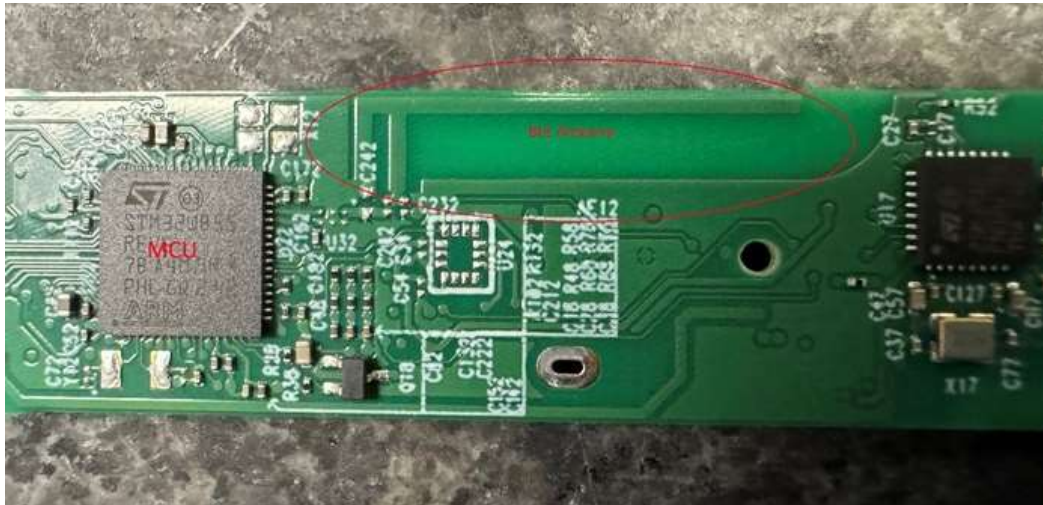


Figure 5: The MCU and BLE antenna are located on the bottom side of the PCB.

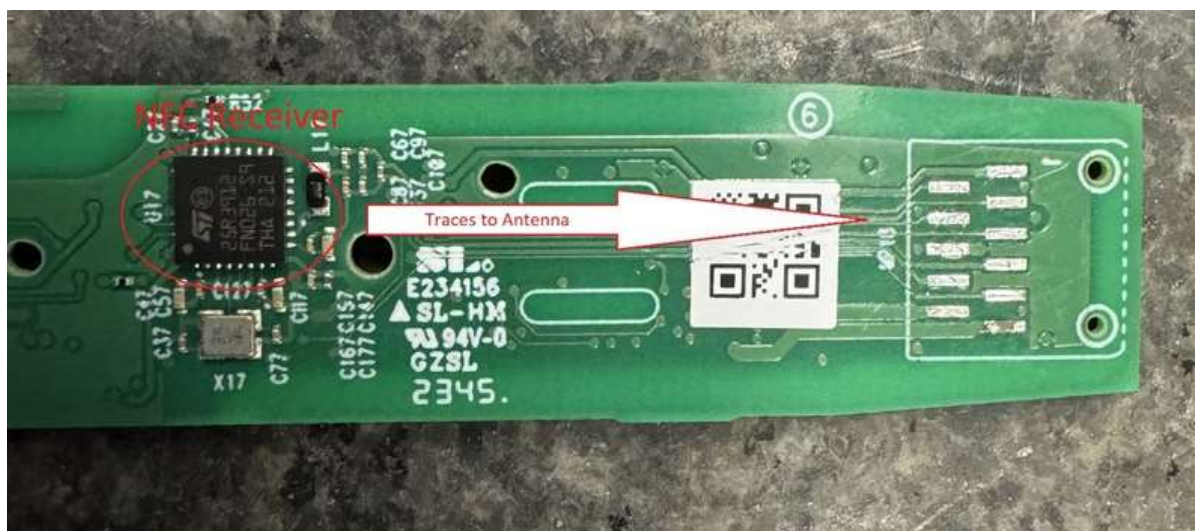


Figure 6: The MCU and BLE antenna are located on the bottom side of the PCB.

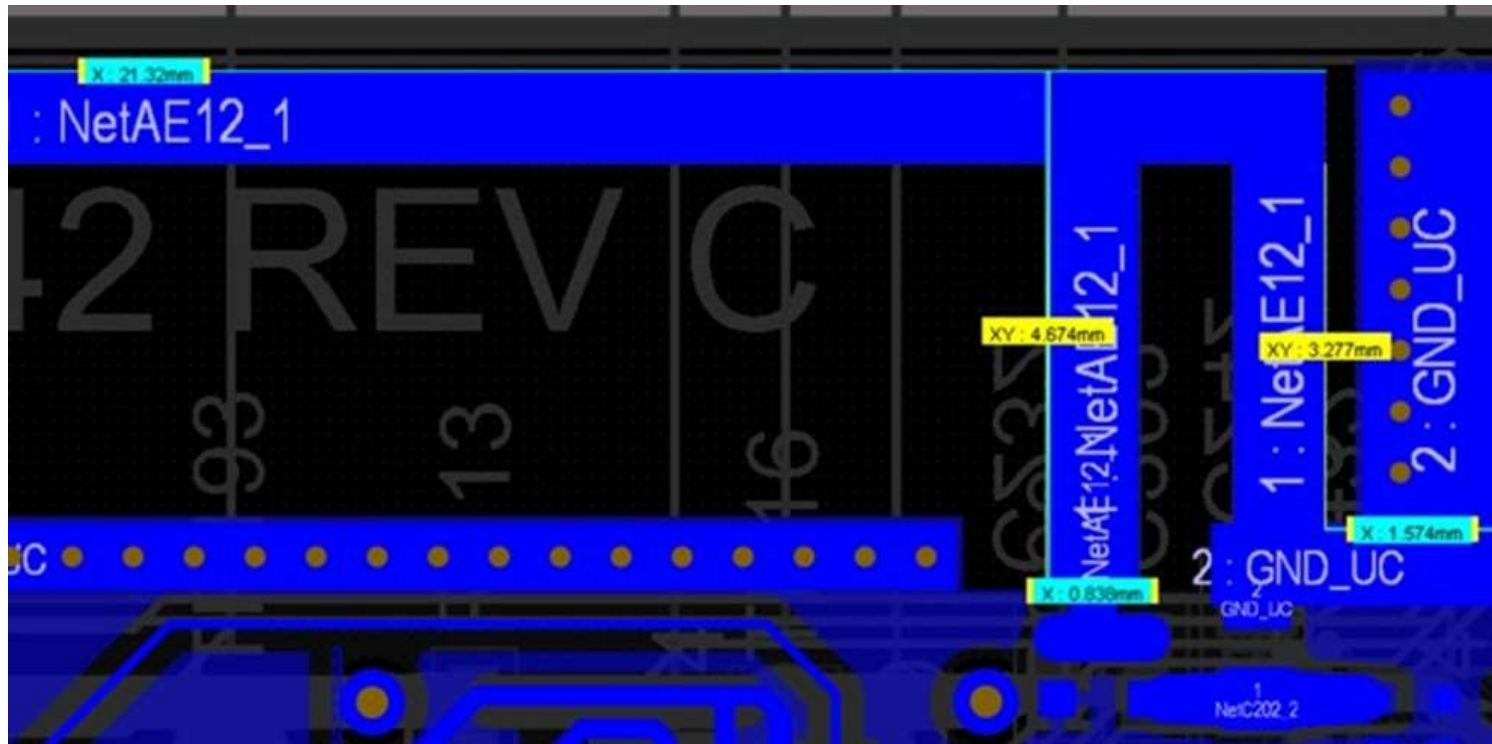


Figure 7: Layout dimensions.

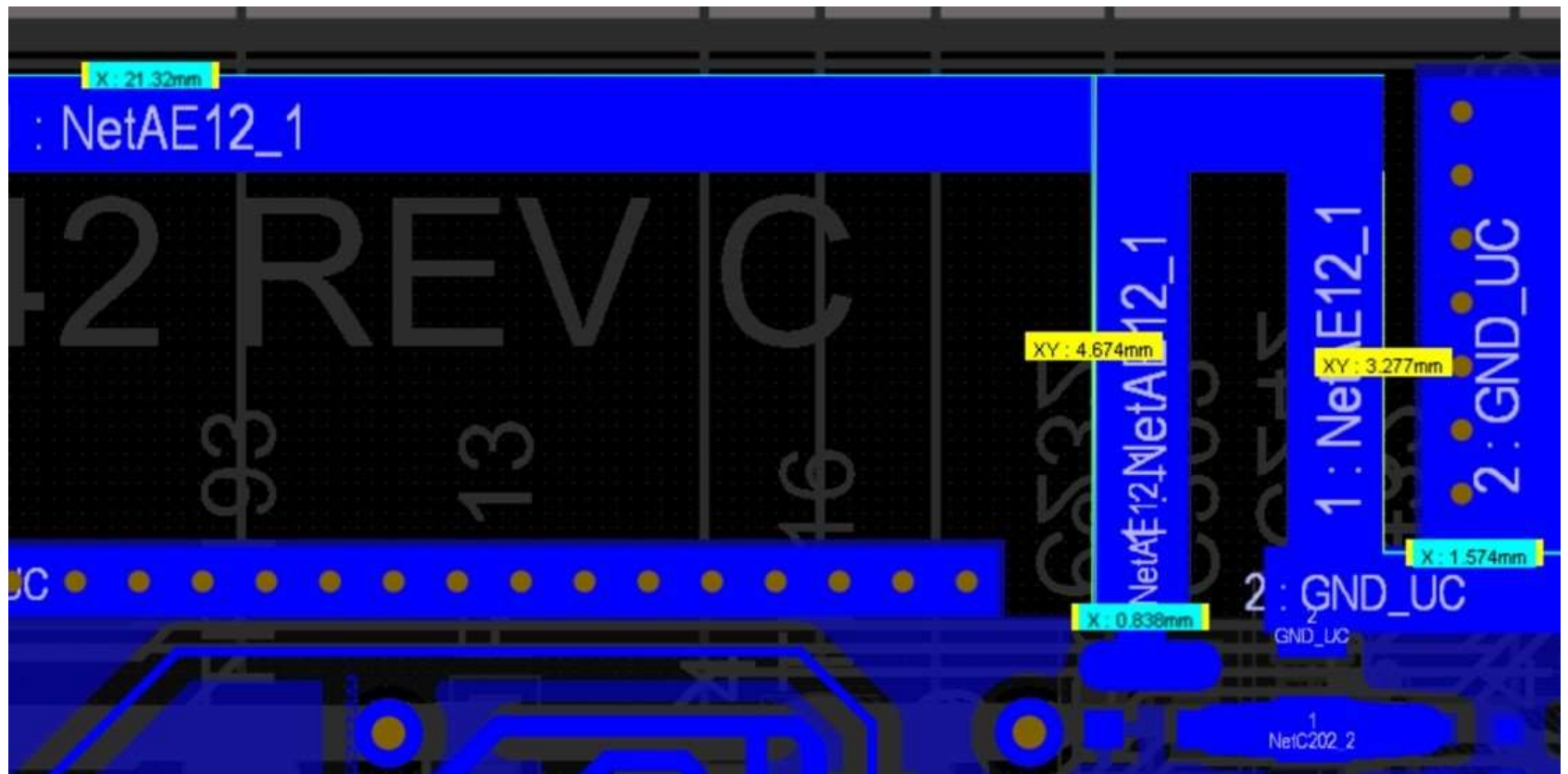


Figure 8: Layout dimensions close up



Figure 9: The flex PCB carries the NFC antenna traces from PCB1 to PCB2



Figure 10: NFC Antenna on PCB2

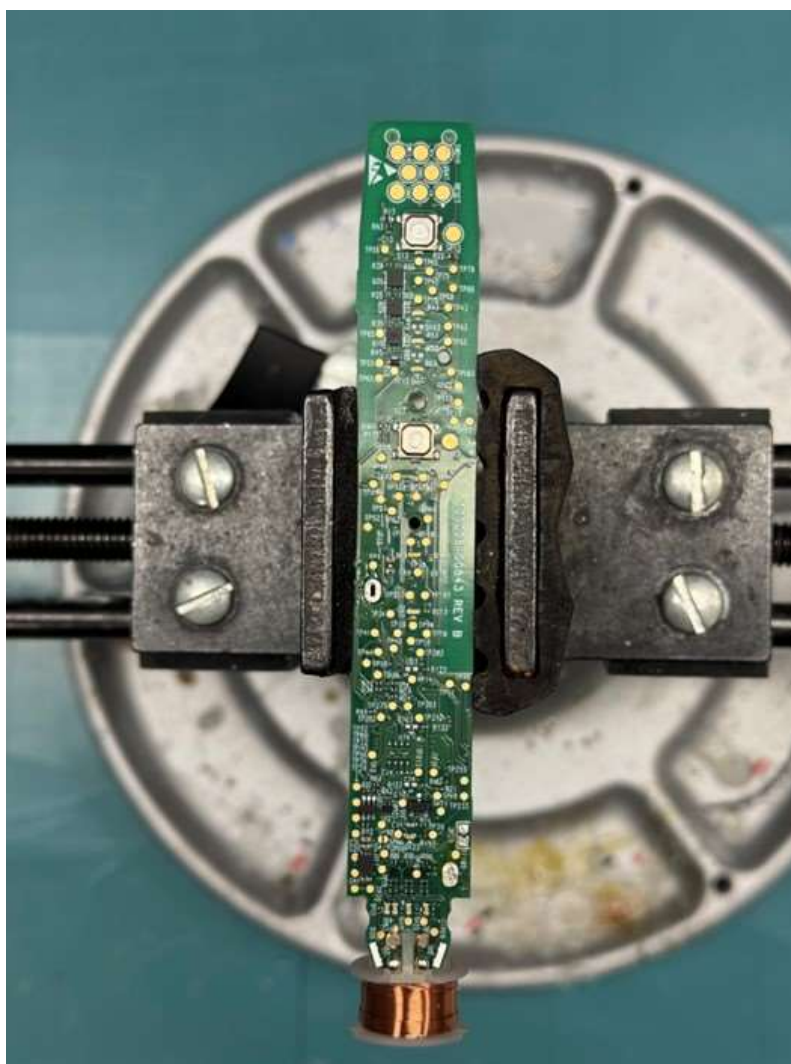


Figure 11: PWB 2

[Revision History](#)

Revision	Date	Author	Description of Change
A	22-Oct-2024	David Rodriguez	Initial release
B	2-Jan-2025	David Rodriguez	Add layout dimensions