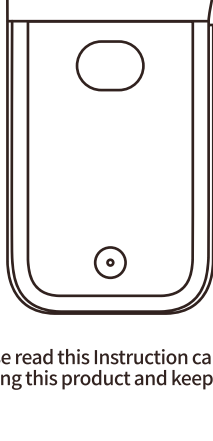


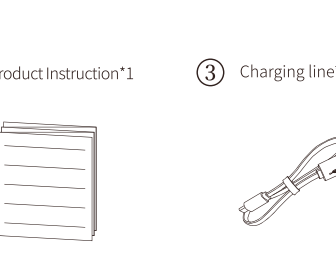
D30S Product Instruction



Please read this Instruction carefully before using this product and keep it properly

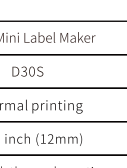
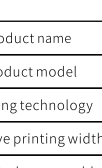
01.Packaging List

- ① Printer*1



- ② Product Instruction*1

- ③ Charging line*1

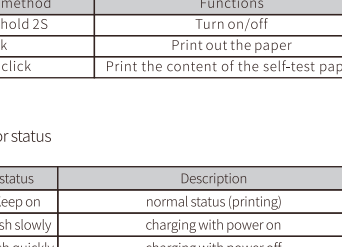


02.Device Parameter

Product name	Smart Mini Label Maker
Product model	D30S
Printing technology	Thermal printing
Effective printing width	0.47 inch (12mm)
Supported consumables	Pre-cut/Black mark thermal, continuous paper
Printing density	Light、standard、dark
Printing resolution	203dpi
Print head service life	50KM
Communication interface	Bluetooth
Product size	5.2*3.2*1.3inch(133.5*80.5*33.5mm)
Power input	5V~2A
Power supply method	Micro USB
	Lithium battery
Supported operating system	Android
	iOS

03.Component Instruction

1.Appearance Introduction



2.Functions of the power button

Operation method	Functions
Press and hold 2S	Turn on/off
Click	Print out the paper
Double click	Print the content of the self-test paper

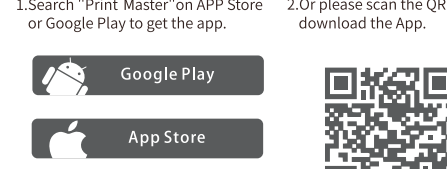
3.Power indicator status

Indicator light	status	Description
Green	Keep on	normal status (printing)
	Flash slowly	charging with power on
	Flash quickly	charging with power off
Red	Keep on	error (lack of paper, cover opened, high temperature)
	Flash slowly	10% of battery remaining
	Flash quickly	5% of battery remaining

04.Introduction of Paper Roll Installation

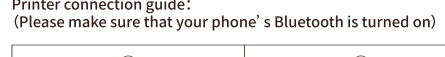
- ① Slide the release latch following the arrow in the direction, and open the paper bin cover to 90 degrees.

- ② Unpack the label paper and put it into the paper bin, then pull the paper 5mm out of the paper outlet.



- ③ Close the paper bin cover and make sure the release latch is slid to the rightmost.

- ④ Long press the ON/OFF button to connect with an APP.



Guidelines for label paper positioning:
When installing or changing the label paper specifications for the first time, please click the power button to feed the paper. After the printer recognizes the label paper positioning, it starts printing.

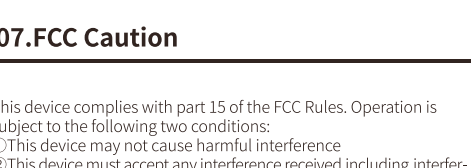
05.App Download Guide

- 1.Search "Print Master"on APP Store or Google Play to get the app.

- 2.Or please scan the QR Code to download the App.



Printer connection guide:
(Please make sure that your phone' s Bluetooth is turned on)



Note:Please select the correct print template to match the label size before edit.

06.Product Warranty

Thank you for choosing the smart mini label maker.

①We will provide customers with reliable "replacement/return" support during the one-year warranty period from the date of purchase.

②Please keep the warranty card in a safe place so that you can read it when needed.

07.FCC Caution

This device complies with part 15 of the FCC Rules. Operation is subject to the following two conditions:

①This device may not cause harmful interference

②This device must accept any interference received,including interference that may cause undesired operation.

Any Changes or modifications not expressly approved by the party responsible for compliance could void the user's authority to operate the equipment.

Note:This equipment has been tested and found to comply with the limits for a Class B digital device, pursuant to part 15 of the FCC Rules. These limits are designed to provide reasonable protection against harmful interference in a residential installation.This equipment generates uses and can radiate radio frequency energy,and if not installed and used in accordance with the instructions,may cause harmful interference to radio communications. However, there is no guarantee that interference will not occur in a particular installation.If this equipment does cause harmful interference to radio or television reception, which can be determined by turning the equipment off and on, the user is encouraged to try to correct the interference by one or more of the following measures:

-Reorient or relocate the receiving antenna.
-Increase the separation between the equipment and receiver.
-Connect the equipment into an outlet on a circuit different from that to which the receiver is connected.
-Consult the dealer or an experienced radio/TV technician for help.

*RF warning for Portable device:The device has been evaluated to meet general RF exposure requirement. The device can be used in portable exposure condition without restriction.

08.Warranty / Maintenance Card

☐ Replace

☐ Return

User Information	Name :	Gender :	Phone :
	Address :		

Product Information	Date of purchase :	
	Product order number :	
	Product serial number :	

Reason for Return (Replace/Repair/Request Maintenance)	Fault description :	
--	---------------------	--