

Safety Instructions

These instructions describe the precautions and about how to deal with the product to prevent personal injury or property loss. Please read the following safety precautions carefully.

Keep this instruction in the place which you can find easily whenever you need.

Warning and Caution



Warning

This symbol indicates that personal injury may occur or the product may be damaged when you fail to follow the given instruction.



Caution

This symbol indicates that property loss may occur or the product may malfunction when you fail to follow the given instruction.

Safety Instruction _____

Precautions _____

Product Features _____

Names of Parts _____

Before Using

- Inserting Battery _____

- Powering On/Off _____

- Button Functions _____

MP3 Mode

- Playback _____

- Scanning File(FF/REW) _____

- Deleting MP3 File _____

- MP3 Playback Functions

- Scan and Playback _____

- Resume _____

- A-B Repeat _____

- Setting Menu

- EQ(Equalizer) _____

- USER EQ mode _____

- Repeating _____

- Erasing _____

Voice Mode

- Switching to Voice Mode _____

- Recording _____

- Playback _____

- Scanning File(FF/REW) _____

- Deleting File _____

- Recording Function

- Index Added Recording _____

- Playback Functions

- Scan and Playback _____

- A-B Repeat _____

- Setting Menu

- Repeating _____

- Erasing _____

Radio Mode

- Switching to Radio Mode _____

- Scanning Frequency _____

- Preset Memory _____

- Using Frequency Preset Memory _____
- Deleting Preset Frequency _____
- Recording Broadcast _____
- Setting Menu
 - Area _____

PC Interface

- Installing Driver _____
- Download _____
- Upload _____
- Deleting File _____

Trouble Shooting _____

Specifications _____

Warranty _____

Precautions

Precautions for use of the product

Do not install the product in a place exposed to these conditions:

High temperature (above 40 ℃)
Poorly ventilated or closed
(car inside, especially summer)

Much moisture
(humidity, above 75%)
Dusty place

Make sure not to place cash cards
or pass cards, susceptible to
magnetic influences, near to the
speaker of the product.

Do not clean using chemicals such
as alcohol, benzene, or sinner, etc.

Place the battery in a location that
your children or infants cannot
access to.

Do not drop down any materials on
the product or impact against the
product.

Do not impact against the LCD of
the product.

* Does not have any responsibility for property loss due to your use of the product even if you use the product correctly. Also does not have any responsibility for demanding any compensation from others.

* Does not have any responsibility for memory data corruptions and resulted property loss due to product malfunction or fault, repair, and/or other reasons.

Precautions

Precautions for use of the battery

Make sure to use the specified standard battery.
(‘AAA’ Alkaline battery)

Do not impose heat on it. Do not disassemble or short-circuit.
Otherwise, it may cause damages or malfunctions to the product.

Do not place the metals such as coins and keys with the battery.
Otherwise, it may cause a fire due to frictional heat.

Make sure that the polarities are correct when inserting a battery.

Place the battery in a location that your children or infants cannot access to.

Make sure to remove the battery when you do not use the product for a long time.

Do not mix a new battery with the old one.



Warning

**When your skin or clothes is stained with electrolyte:
Wash them with clean water immediately. When your skin
has been hurt, make sure to consult your doctor.**

**When electrolyte enters your eye;
Do not rub your eye. Wash it with clean water
immediately and make sure to consult your doctor.**

Precautions

Safety Precautions

If the product smokes or any modification occurs due to heating, remove the battery immediately.

Do not use the product in an airplane or a place where electronic devices should not be used.

Do not use earphone during driving or walking.
Otherwise it may cause a traffic accident.

Do not listen to with a loud volume.
Otherwise it may damage your hearing. Control the volume again.

Do not disassemble the product arbitrarily.

Product Features

Compact Size

Handy to carry due to compact size and light-weight.

Adapting flash memory

Recorded sound is preserved even if the power is cut off.

Automated Power Break

Automated power break reduces battery consumption.

EL lighting

You can see the message on the LCD screen even if the place is dark.

EQ(Equalizer) Function

You can listen to a MP3 file in the Flat, Pop, Rock or User EQ mode.

MP3 and WMA playback

Both MP3 files and WAM files are supported.

VBR playback

Various MP3 files are supported from 8Kbps to VBR.

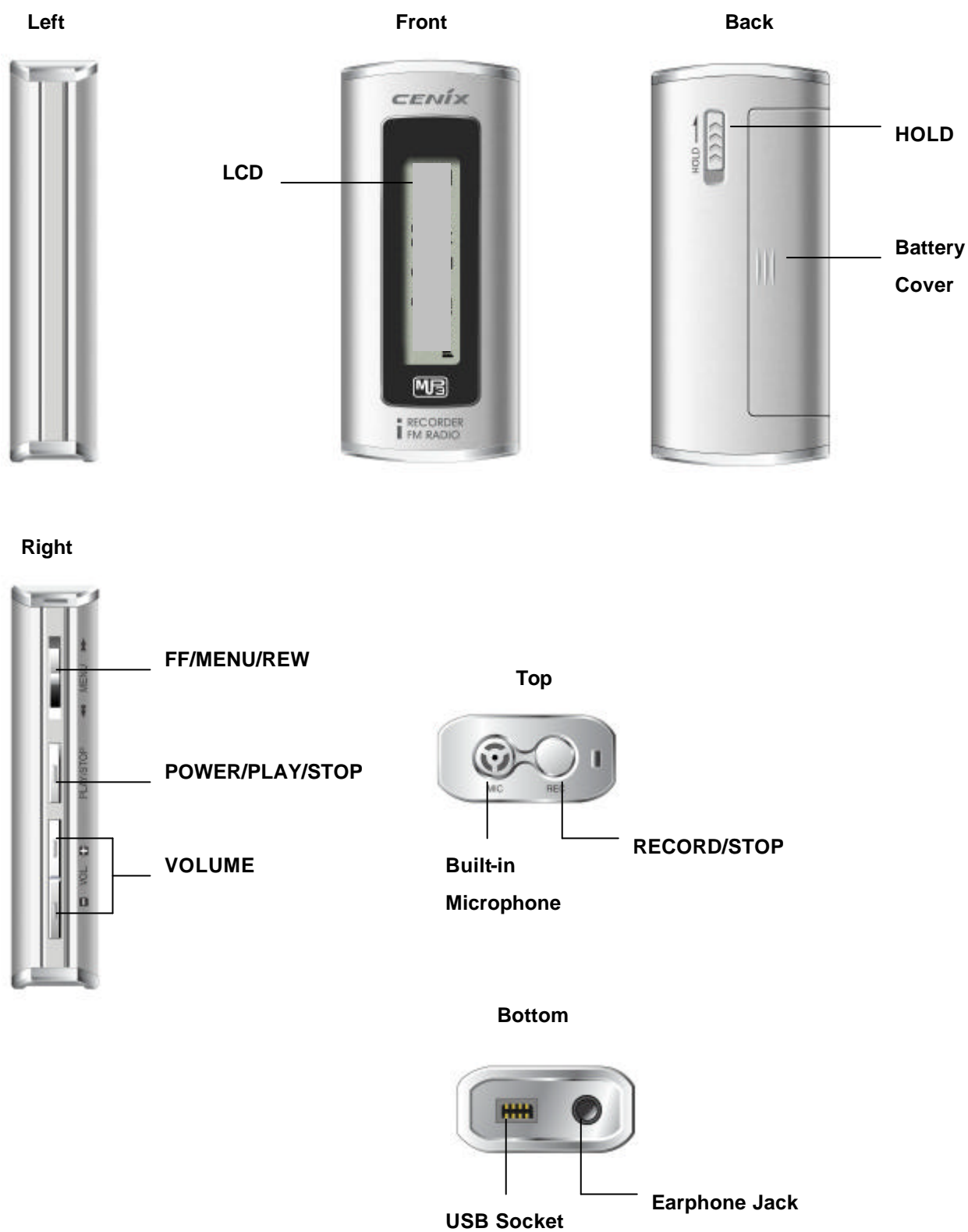
Semi Mass Storage

Only installing driver uploading and downloading is available without software.

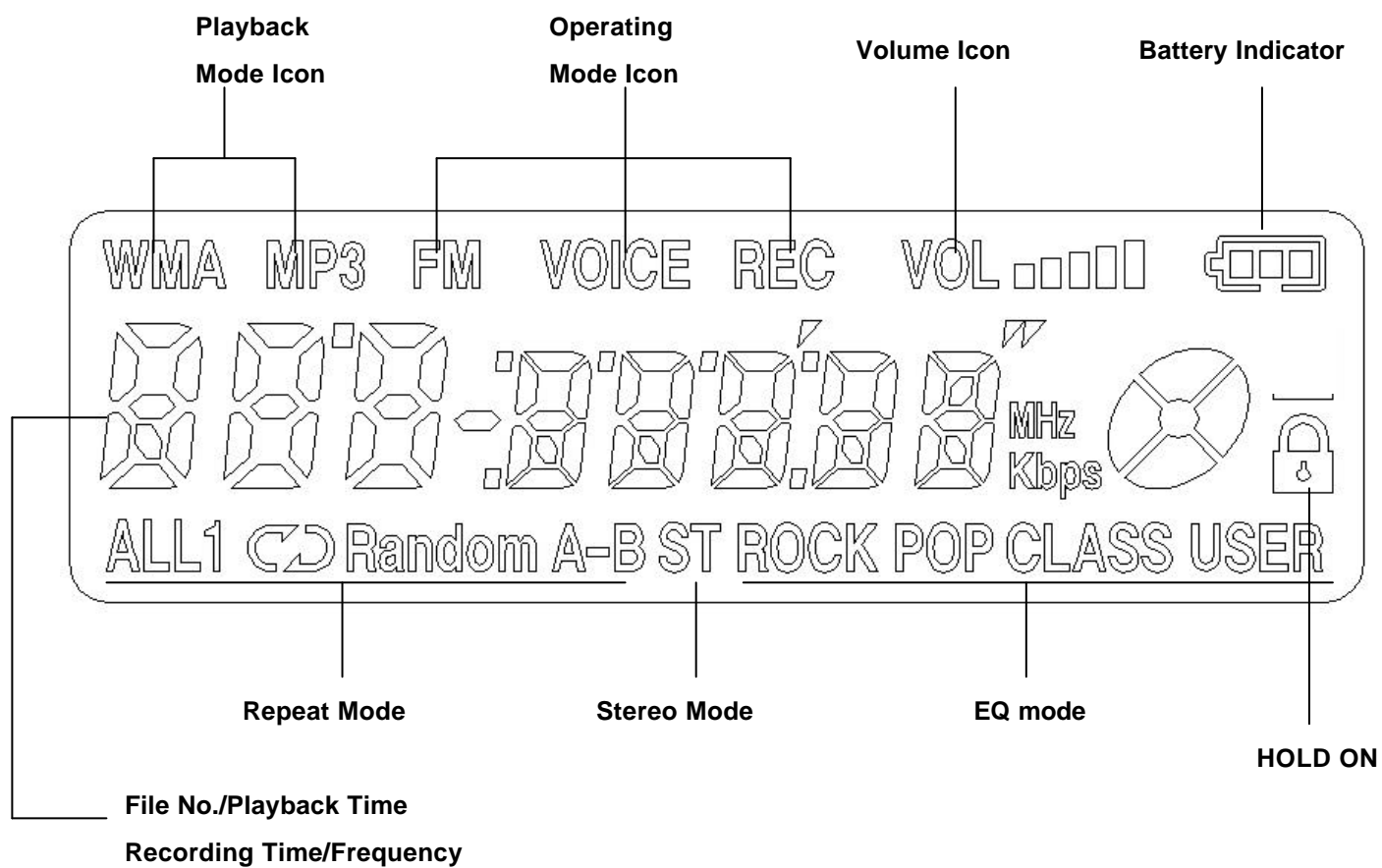
Receiving and Recording FM Radio

You can receive and record an FM radio.

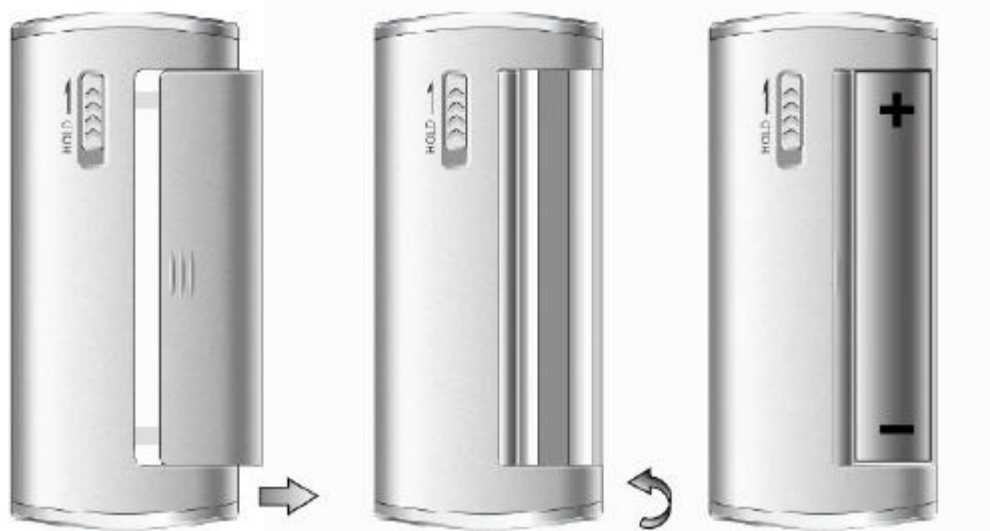
Names of Parts



Description of LCD



Inserting Battery



1. Push the battery cover slightly and slide it in the arrow direction.
2. Insert one AAA alkaline battery. Make sure that the polarities (+, -) are correct.
3. Close the battery cover.



Caution

**Make sure to replace the batteries in stop mode.
Make sure that the polarities (+, -) are correct.**

Battery Usage Icon

Full	Little consumed	Much consumed	Time to replace

Note

"LO Batt" is displayed when the voltage is low due to consumption.



Battery Lifetime ("AAA" Alkaline)

Battery	MP3 Playback	Voice Recording	FM Mode	Playback with Earphone(VOL. 10)
AAA Alkaline	00 hours	00 hours	00 hours	00 hours

Note

Battery lifetime is subject to battery type and the volume you use.

The power is turned off automatically for efficient use of the battery if you do not use the product for more than 1 minute.

When you do not use the product, set the **HOLD** switch to **ON** to prevent unwanted consumption of the battery due to misuse of the buttons.

Powering On/Off

1. Set the **HOLD** button to OFF (HOLD OFF).
2. Press the **POWER/PLAY/STOP** button shortly once to turn the power on.
3. Press the **POWER/PLAY/STOP** button longer once to turn the power off.

Note

The power is turned off automatically if there is no operation for 1 minute.

In **HOLD ON** mode, **HOLD** is displayed and the power is not turned on.

Button Functions

MENU : Selecting MENU and switching functions(MP3/Voice/Radio)

REC/STOP : Recording and stop, preset memory

PLAY/STOP/POWER : Playback and stop, power On/Off and using frequency preset memory

REW/FF : Rewind and fast forward

HOLD : Button hold on/off to prevent unwanted operations

VOLUME: Volume control

ERASE : Deleting files

Playback

You can listen to MP3 file saved in the product.

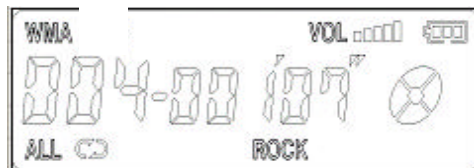
1. Select a file you wish to playback using **FF/REW** button.
2. Press the **PLAY/STOP** button shortly once to start playback.
2. Press the **PLAY/STOP** button shortly once again to stop playback.



Note

MP3 files with 8Kbps to VBR are available.

MP3 is displayed on the LCD when MP3 files playback. WMA is displayed on the LCD when WMA files playback.



Volume Control

Controls the volume using the **VOL.** button. The range is between 0 and 20.



Warning

Do not listen to recorded files with a loud volume.
Otherwise it may damage your hearing.

Start from a low volume, and then set the volume to an appropriate level.

Scanning File (FF/REW)

Using the **FF/REW** button, you can move to the file you want.

Moving to the previous or next file: Press the **FF/REW** button shortly during playback.

Scanning file: Press the **FF/REW** button longer during playback.

For the first 10 seconds: The playback time is increased or decreased by second.

After 10 seconds: The playback time is increased or decreased by 10 seconds.

Selecting the previous or next file : Press **FF/REW** button shortly in the stop state.

Deleting MP3 File

You can delete the MP3 files saved in the product. The file numbers are decreased by one after deleting file.

Deleting one file(FILE ERASE)

Deletes one file in the recorded sounds.

1. Select the file to delete in stop mode, press the **MENU** button longer once and shortly twice to enter ERASE MODE.
2. Select FILE ERASE using the **FF/REW** button.
3. Press the **MENU** button longer once to delete the file.



Before deleting #3 file



After deleting #3 file

Deleting all files(ALL ERASE)

Deletes all the recorded files saved in a folder.

1. Press the **MENU** button longer once in stop mode and shortly twice to enter ERASE MODE.
2. Select ALL ERASE using the **FF/REW** button.
3. Press the **MENU** button longer once to delete all files.



Before ALL ERASE



After ALL ERASE

Note

If you press the **MENU** button or other button except the **ERASE** button, file deletion is cancelled.



Caution

The deleted recording file cannot be recovered.
Please make sure to decide carefully and check the
file(s) you select to delete.

MP3 Playback Functions

Scan and Playback

The first 5 seconds of each files are played back one by one.

1. Press the **PLAY/STOP** button longer once during playback.
2. The **SCAN** message is displayed on the LCD and the first 5 seconds of the recorded files are played back in the order.
3. Press the **PLAY/STOP** button shortly once to stop scan and playback.



Resume

Playbacks from the position you stopped when you stopped playback.

Note

If you press other button than the **PLAY/STOP** button after stopping playback, the file is played back from the first position.

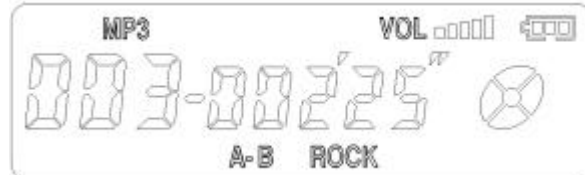
A-B Repeat

Repeats the selected part.

1. Press the **MENU** button shortly once to select A point during playback.
2. Press the **MENU** button shortly once again to select B point, the selected **A-B** part is repeated.
3. Press the **MENU** button shortly once to release A-B repeat.



Select A point



Select B point

Note

If u don't select B point after selecting A point, repeat mode is released and moves to the next file.

Setting Menu

Entering to menu mode: Press the **MENU** button longer once during playback or in stop mode.

Move to the next menu: Setting each menu, press the **MENU** button shortly once.

Exit from menu mode: Setting each menu, press the **MENU** button longer once.

Setting EQ(Equalizer)

You can select an appropriate mode according to music file type you wish to playback.

1. Press the **MENU** button shortly once during playback or in stop mode.
2. Select **ROCK, POP, CLASS** or **USER** mode using **FF/REW** button.
3. Press the **MENU** button again to complete setting EQ.



Setting USER EQ mode

You can set LOW sound(BASS) and HIGH sound(TREBLE) for 5 steps.

1. Select USER in the setting EQ mode, select **MENU** button shortly once.
2. Set the BASS using the **FF/REW** button, press the **MENU** button shortly once.
3. Set the TREBLE using the **FF/REW** button, press the **MENU** button to complete setting USER EQ mode.



BASS



TREBLE

Repeating

You can set repeating style.

1. Press the **MENU** button longer once during playback or in stop mode and press the **MENU** button shortly once.
2. Select NORMAL, REPEAT_1, REPEAT_ALL or RAMDOM using **FF/REW** button.
3. Press the **MENU** button to complete setting.

NORMAL : Playback from the first file to the last file and stop.

REPEAT_1 : Repeat only one file.

REPEAT_ALL : Repeat all files continuously in order.

RANDOM : Repeat all files randomly.



Enter to repeating mode(NORMAL)



REPEAT_1



REPEAT_ALL



RANDOM

Deleting

You can delete MP3 files saved in the product. Deleting one file and all files are available. The way of deleting files is the same as Deleting MP3 File, page 13.

Switching to Voice Mode

Press the **MENU** button shortly once, select Voice Mode using the **FF/REW** button.

Recording

You can record voice or sound.

1. Press the **REC/STOP** button shortly once to start recording in stop mode.
2. Press the **REC/STOP** button shortly once again to stop recording.



Playback

You can listen to the recorded file saved in the product using earphones.

1. Select a file you wish to playback using **FF/REW** button.
2. Press the **PLAY/STOP** button shortly once to start playback.
3. Press the **PLAY/STOP** button shortly once to stop playback.



Scanning File (FF/REW)

Using the **FF/REW** button, you can move to the file you want.

Moving to the previous or next file: Press the **FF/REW** button shortly during playback.

Scanning file: Press the **FF/REW** button longer during playback.

For the first 10 seconds: The playback time is increased or decreased by second.

After 10 seconds: The playback time is increased or decreased by 10 seconds.

Selecting the previous or next file : Press **FF/REW** button shortly in the stop state.

Deleting Voice File

You can delete the voice files saved in the product.

Deleting one file(FILE ERASE)

Deletes one recorded file in the product. The file numbers are decreased by one after deleting file.

1. Select the file to delete in stop mode, press the **MENU** button longer once and shortly twice to enter ERASE MODE.
2. Select FILE ERASE using the **FF/REW** button.
3. Press the **MENU** button longer once to delete the file.



Before deleting #5 file



After deleting #5 file

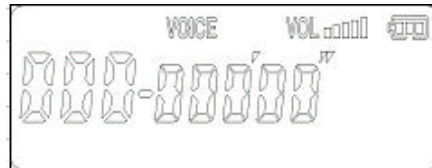
Deleting all files(ALL ERASE)

Deletes all the recorded files saved in voice folder.

1. Press the **MENU** button longer once in stop mode and shortly twice to enter ERASE MODE.
2. Select ALL ERASE using the **FF/REW** button.
3. Press the **MENU** button longer once to delete all files.



Before ALL ERASE



After ALL ERASE

Note

If you press the **MENU** button or other button except the **ERASE** button, file deletion is cancelled.



Caution

The deleted recording file cannot be recovered.
Please make sure to decide carefully and check the file(s) you select to delete.

Voice Recording Function

Index Added Recording

Adds the indexing number (file number) of the file being recorded.

Press the **FF** button during recording, the file number of the file being recorded is increased and saved automatically.

When you press the **FF** button and record for 30 minutes after recording for 30 minutes starting from the number 1 file, the sound is recorded in the number 1 file for 30 minutes and in the number 2 file for 30 minutes.

Voice Playback Functions

Scan and Playback

The first 5 seconds of each files are played back one by one.

1. Press the **PLAY/STOP** button longer once during playback.
2. The **SCAN** message is displayed on the LCD and the first 5 seconds of the recorded files are played back in the order.
3. Press the **PLAY/STOP** button shortly once to stop scan and playback.



Resume

Playbacks from the position you stopped when you stopped playback.

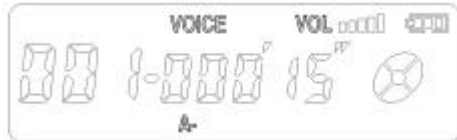
Note

If you press other button than the **PLAY/STOP** button after stopping playback, the file is played back from the first position.

A-B Repeat

Repeats the selected part.

1. Press the **MENU** button shortly once to select A point during playback.
2. Press the **MENU** button shortly once again to select B point, the selected **A-B** part is repeated.
3. Press the **MENU** button shortly once to release A-B repeat.



Select A point



Select B point

Setting Menu

Entering to menu mode : Press the **MENU** button longer once during playback or in the stop mode.

Move to the next menu : Setting each menu, press the **MENU** button shortly once.

Exit from menu mode : Setting each menu, press the **MENU** button longer once.

Repeating

You can set repeating style.

1. Press the **MENU** button longer once during playback or in stop mode and press the **MENU** button shortly once.
2. Select NORMAL, REPEAT_1 or REPEAT_ALL using **FF/REW** button.
3. Press the **MENU** button to complete setting.

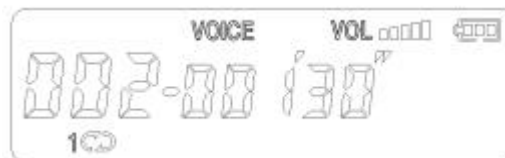
NORMAL : Playback from the first file to the last file and stop.

REPEAT_1 : Repeat only one file.

REPEAT_ALL : Repeat all files continuously in order.



Enter to repeating mode(NORMAL)



REPEAT_1



REPEAT_ALL

Deleting

You can delete MP3 files saved in the product. Deleting one file and all files are available. The way of deleting files is the same as Deleting Voice File, page 19.

Switching to Radio Mode

Press the **MENU** button shortly once, select Radio Mode using the **FF/REW** button.

Scanning Frequency

Scans the frequency of the broadcast you wish to listen to.

Auto Frequency Scanning

Press the **FF/REW** button longer while listening to a radio broadcast.

Manual Frequency Scanning

Press the **FF/REW** button shortly once while listening to a radio broadcast.

Preset Memory

Memorizes the frequency of the current broadcast to your desired frequency memory number. You can save up to 20 frequencies.

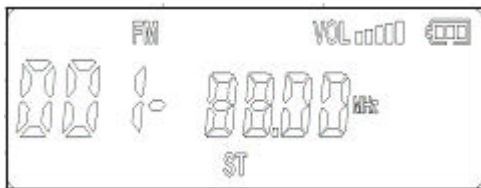
1. Press the **REC/STOP** button shortly once while listening to a radio broadcast.
2. Select your desired frequency memory number using the **FF/REW** button.
3. Press the **REC/STOP** button shortly once again to save the current broadcast frequency to the selected number.



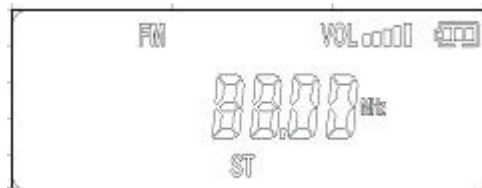
Listening to Preset Frequency

You can listen to the frequency broadcast saved with the preset number.

1. Press the **PLAY/STOP** button shortly once while listening a radio broadcast.
2. The Preset number and broadcast frequency displays on the LCD screen.
3. Select your desired number using the **FF/REW** button to listen to a preset broadcast.
4. Press the **PLAY/STOP** button shortly once to release the preset frequency mode.



Listening to preset frequency



Releasing the preset frequency

Note

When there is no saved number, this function does not work.

If the preset numbers which have no saved frequency are not displayed on the LCD screen when selecting a number with the **FF/REW** button.

Deleting Preset Frequency

You can delete a preset frequency.

1. Select the number you wish to delete using the **FF/REW** button.
2. Press the **ERASE** button longer once, the **ERASE** is displayed on the LCD screen.
3. Press the **ERASE** button shortly once to delete the frequency of the selected number.

Recording Broadcast

Records the broadcast you are listening to.

1. Press the **REC/STOP** button longer to start recording while listening to a broadcast.
2. Press the **REC/STOP** button longer once to stop recording.



Note

Recorded file is saved in the VOICE folder as *.WAV. You can check it on the screen after connecting to the PC.

Playback the Recorded Broadcast

1. Switch to the Voice Mode. (See page 18)
2. Select a file you wish to playback using **FF/REW** button.
3. Press the **PLAY/STOP** button shortly once to start playback.
4. Press the **PLAY/STOP** button shortly once to stop playback.

Setting Menu

Area

You can change the frequency band according to your area.

- 1. Press the **MENU** button longer once.
- 2. Select your area using the **FF/REW** button and press the **MENU** button shortly once to complete setting.



USA



EUROPE/KOREA



JAPAN

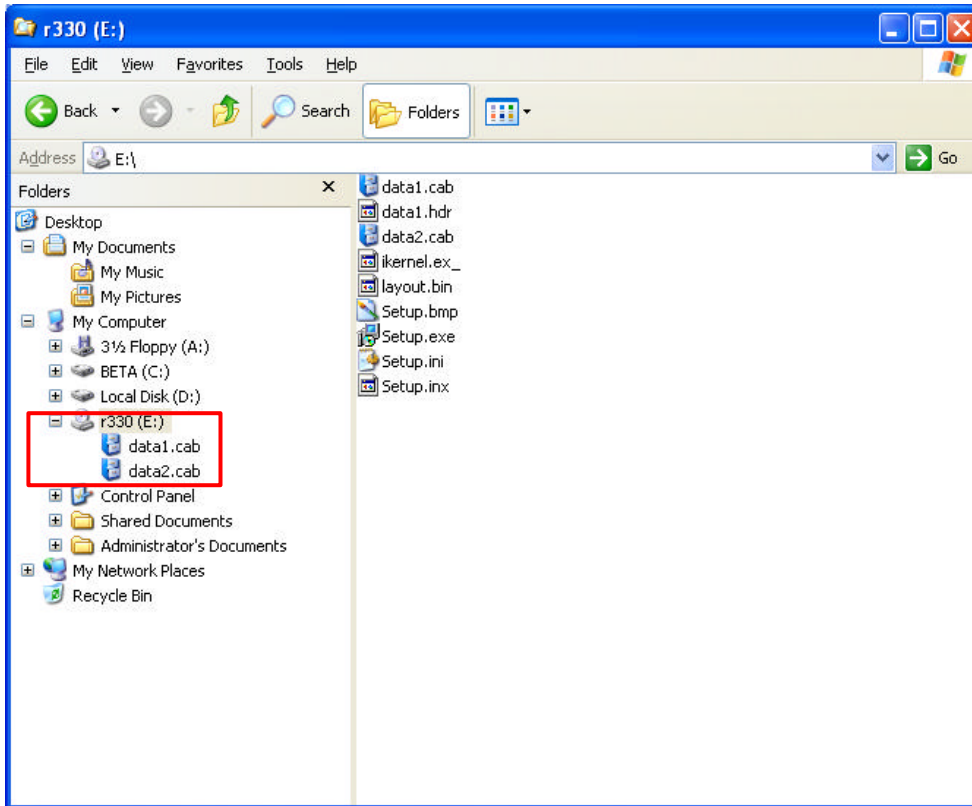
Note

Available frequency band according to area

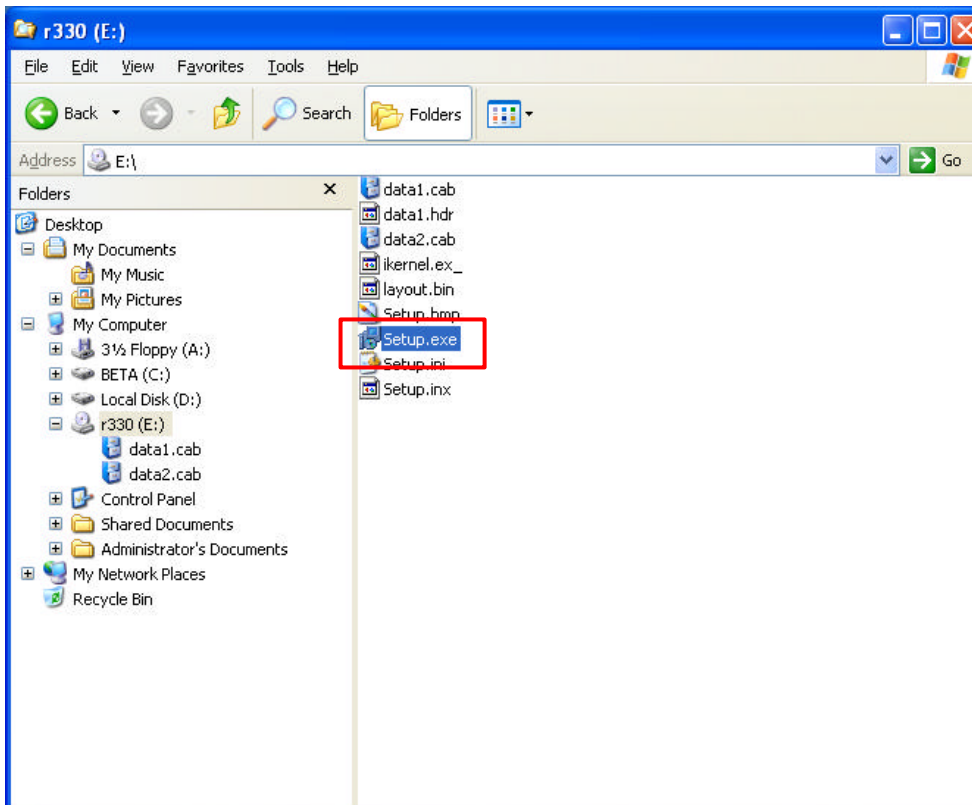
Area	Frequency Band	Mobile Frequency Unit
USA	88 MHz ~ 108 MHz	100 KHz
Europe/Korea	88 MHz ~ 108 MHz	50 KHz
Japan	76 MHz ~ 108 MHz	76.0 MHz ~ 90.0 MHz : 100 KHz 90.0 MHz ~ 108.1 MHz : 50 KHz

Installing Driver

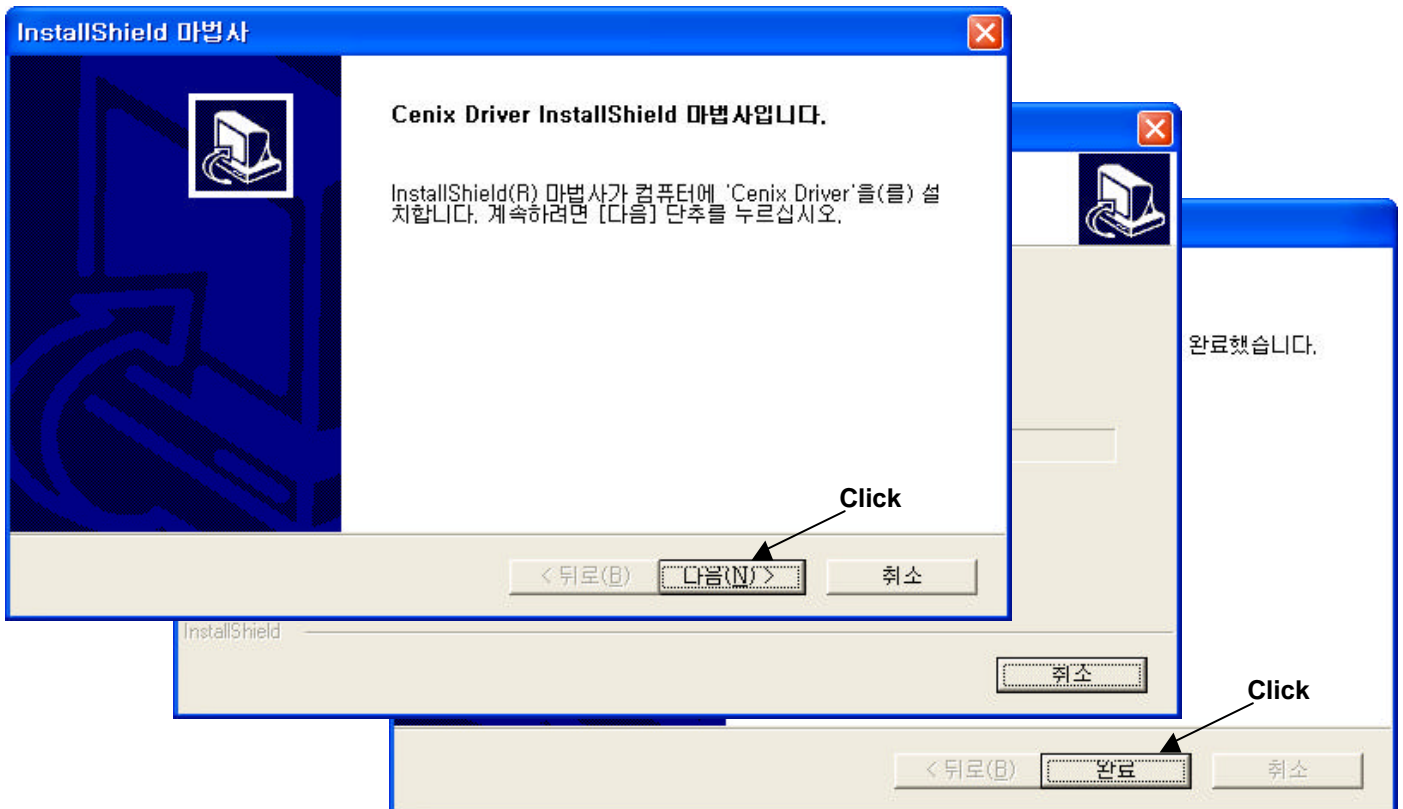
1. Insert the Driver CD on your CD Rom driver. Open the CD driver on the windows explorer.



2. Double-click the [Setup.exe] item in the right window.



3. Press the NEXT button sequentially as directed on the screen to finish the installation.



Note

Please press the [Continue Anyway] button and keep installing when the below message is shown after installing the driver on the Windows XP.



Caution

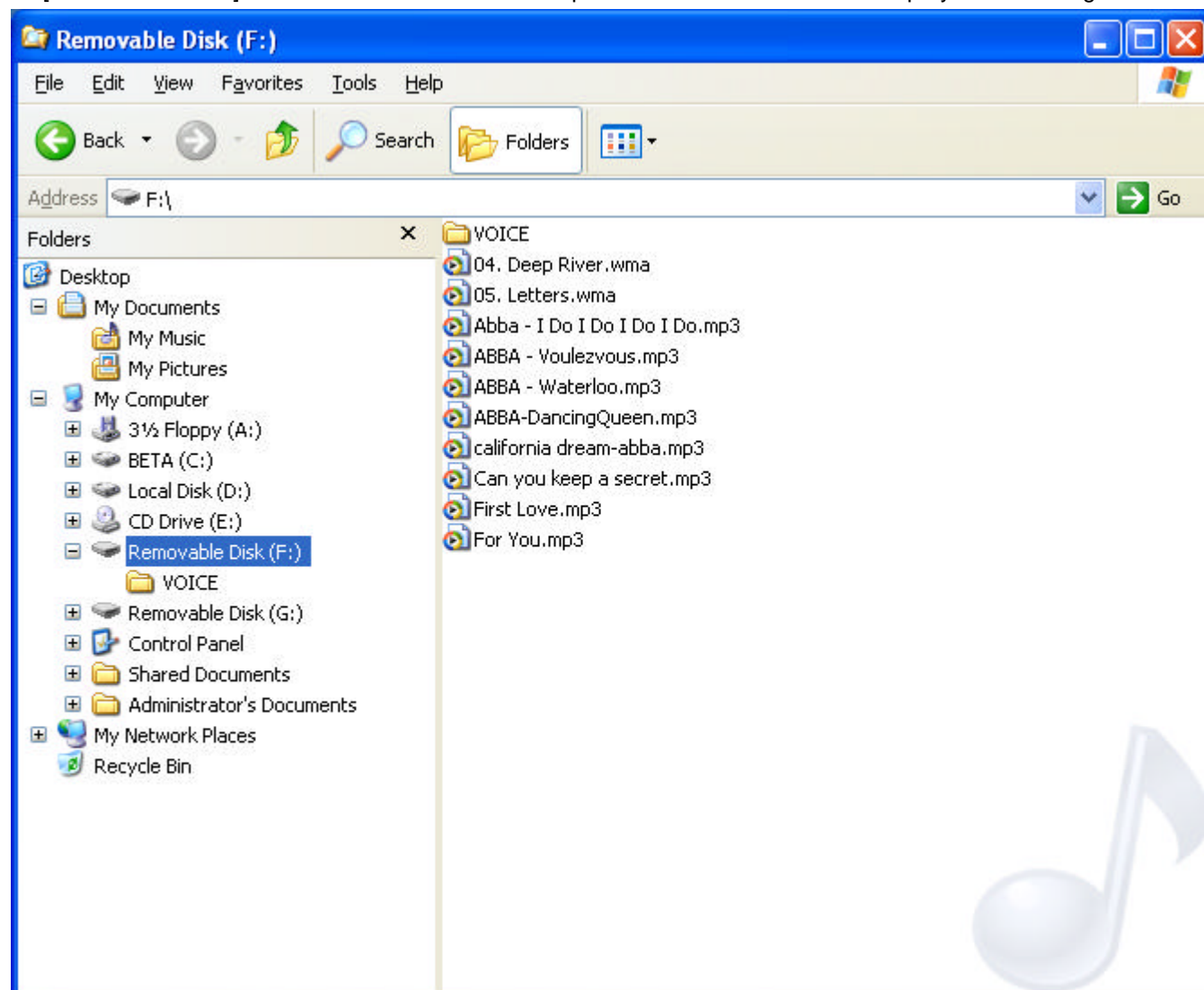
Do not connect the product to the PC before installing the driver.

Downloading

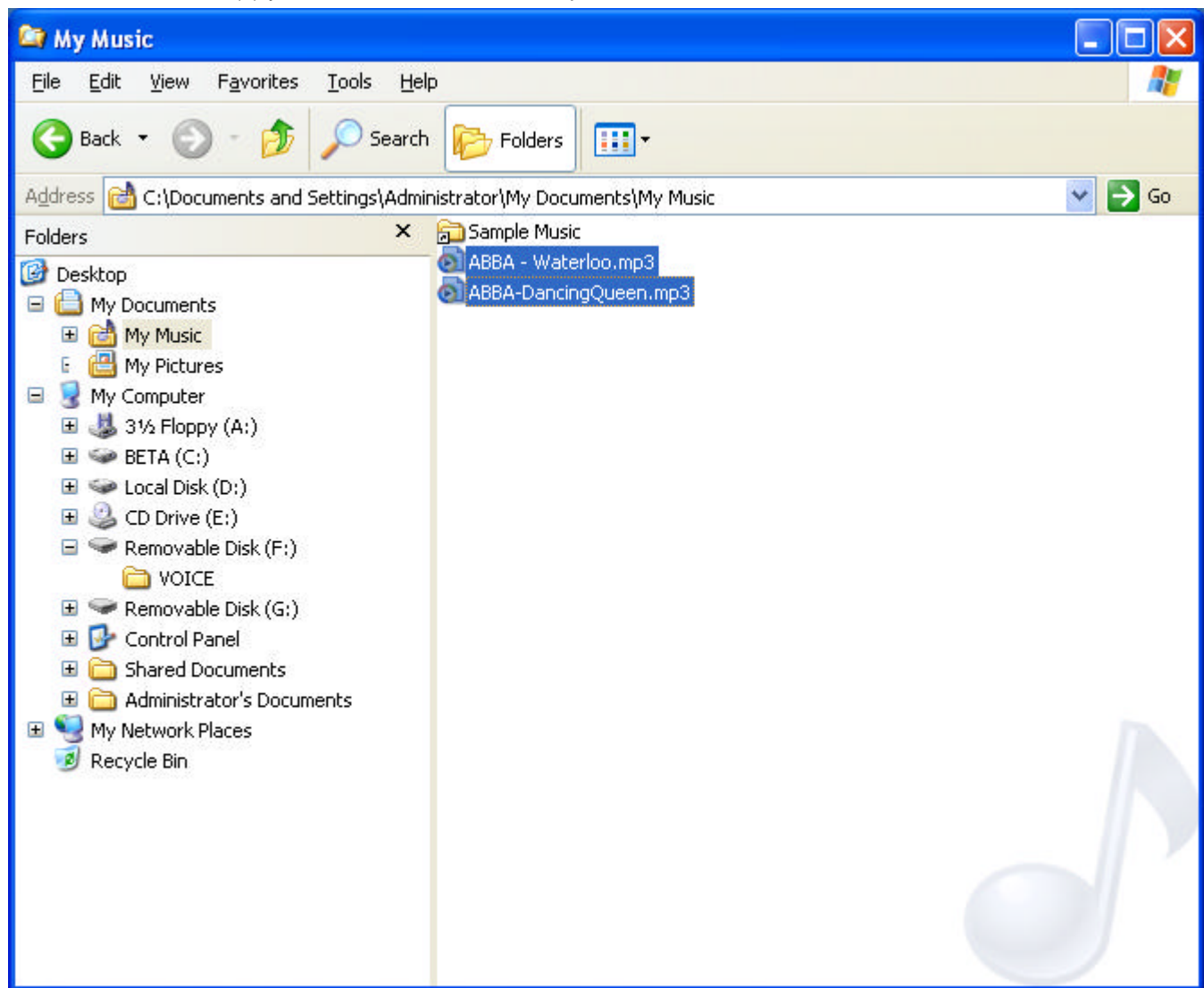
1. Turn the power on and connect the product to the PC after installing the driver using USB cable.



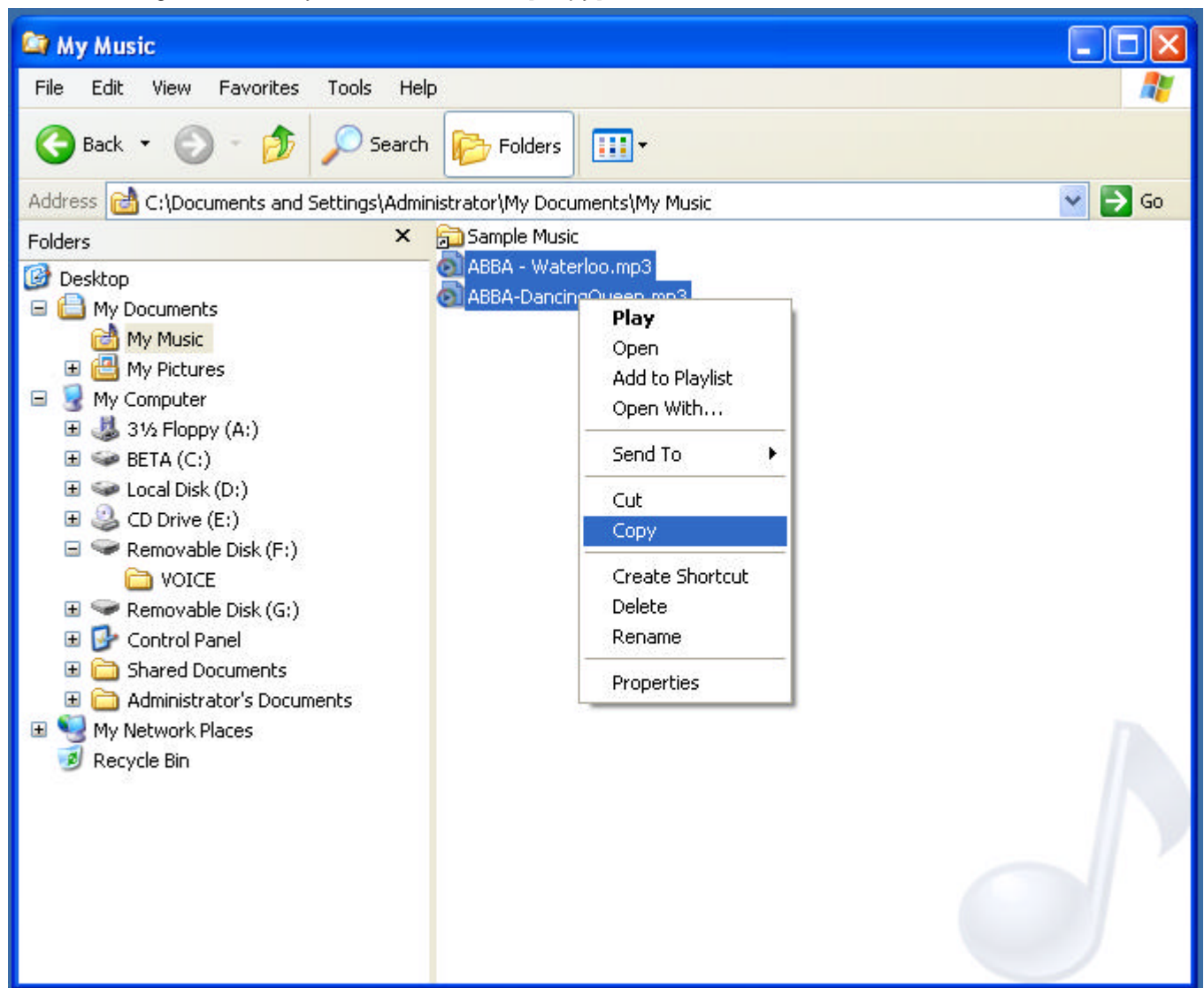
2. [Removable Disk] is created in the windows explorer. The saved files are displayed on the right window.



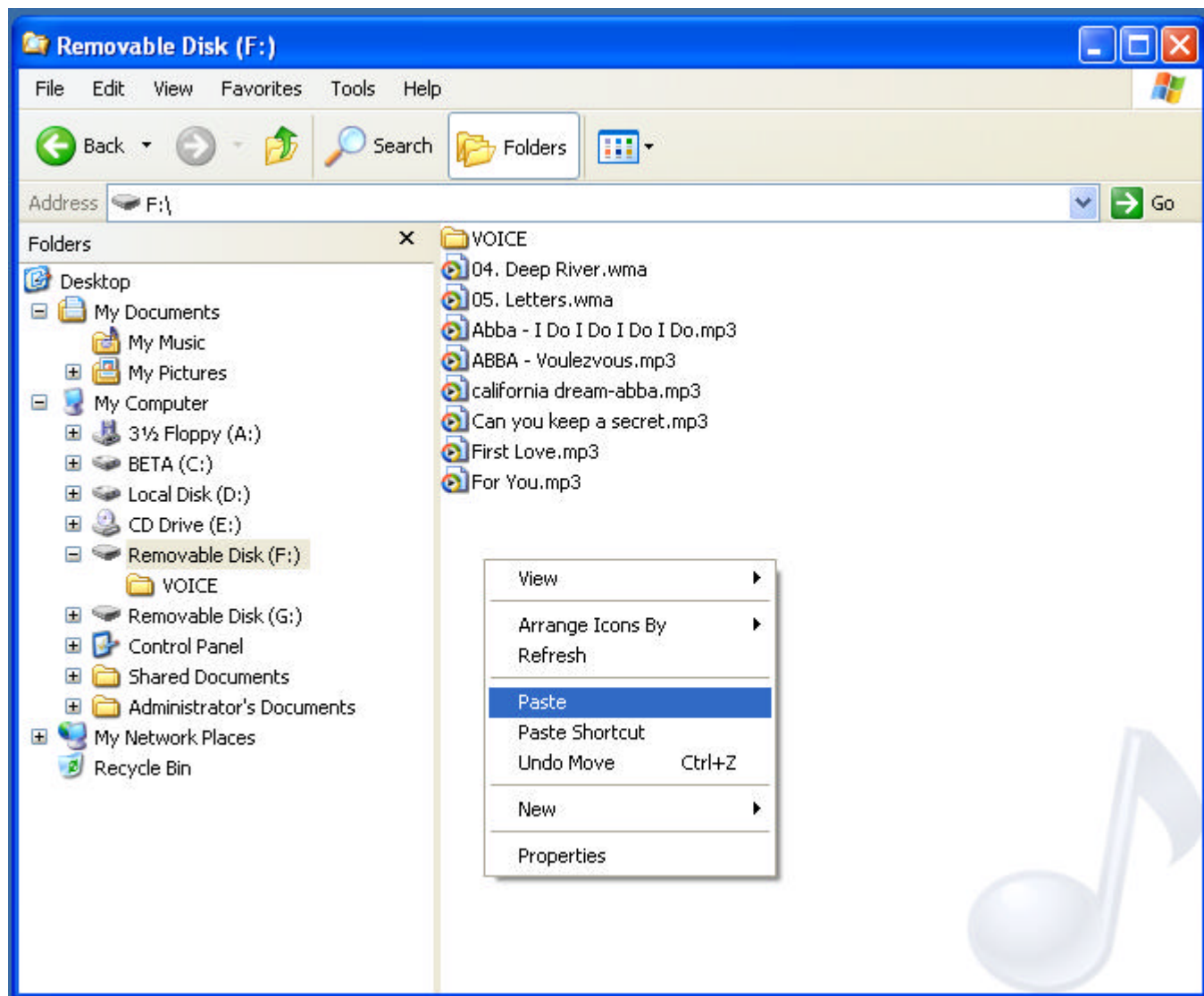
3. Select the MP3 file(s) you wish to download to the product.



4. Click the right button of your mouse. Select [Copy] item.



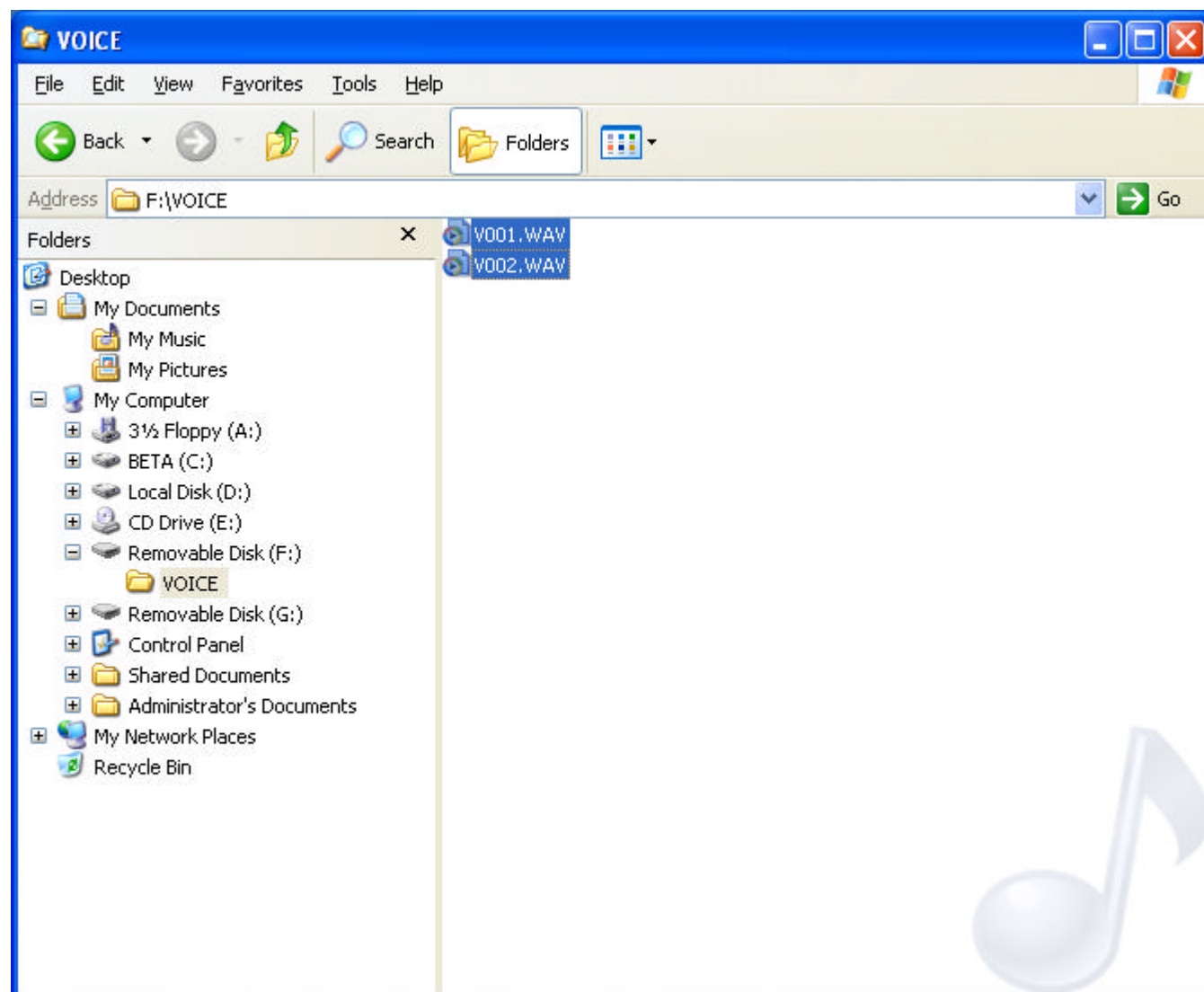
5. Select the [Removable Disk] on the left window and click the [Paste]. Or drag and drop to the [Removable Disk].



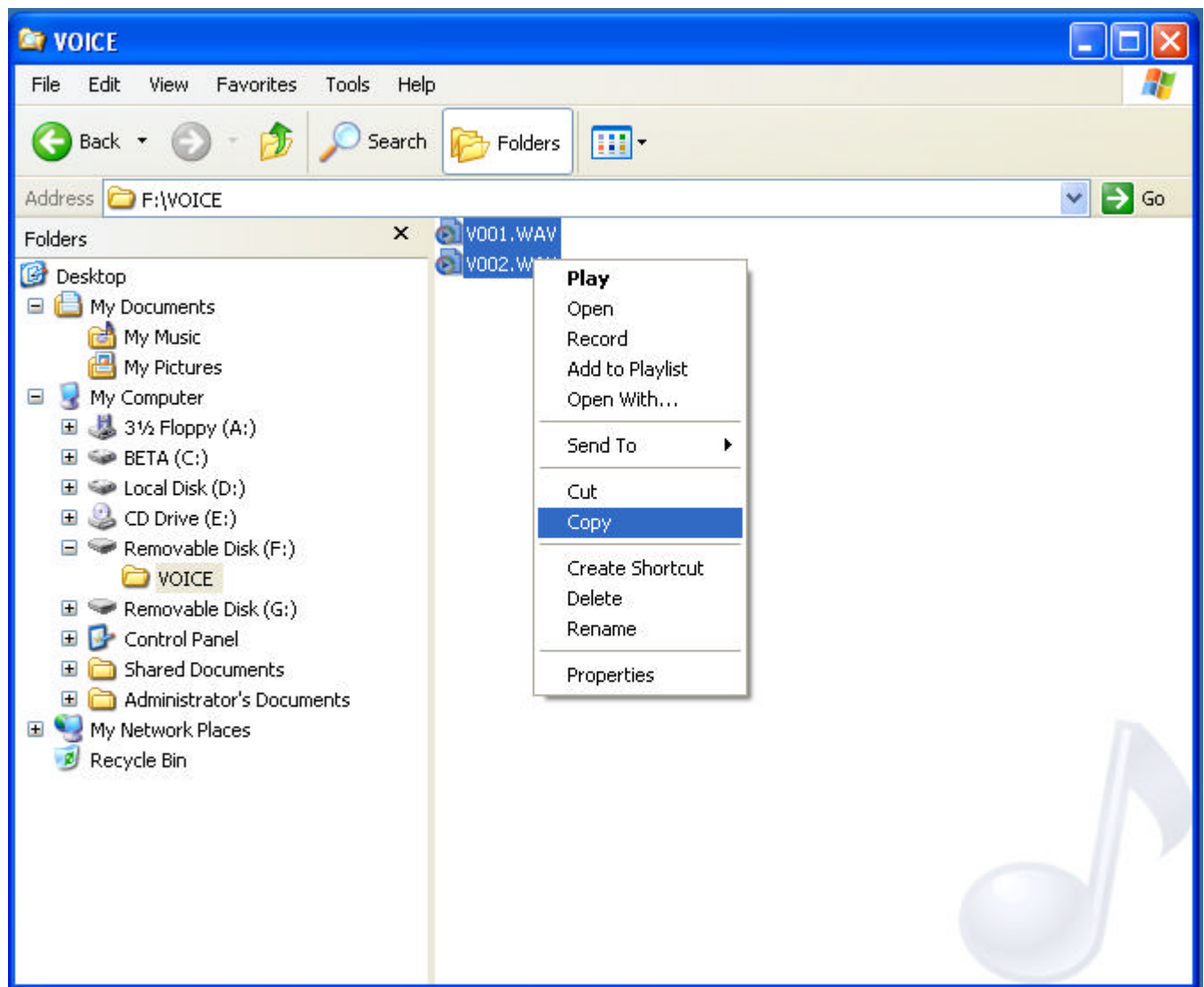
Uploading

You cannot upload MP3 files to the PC.

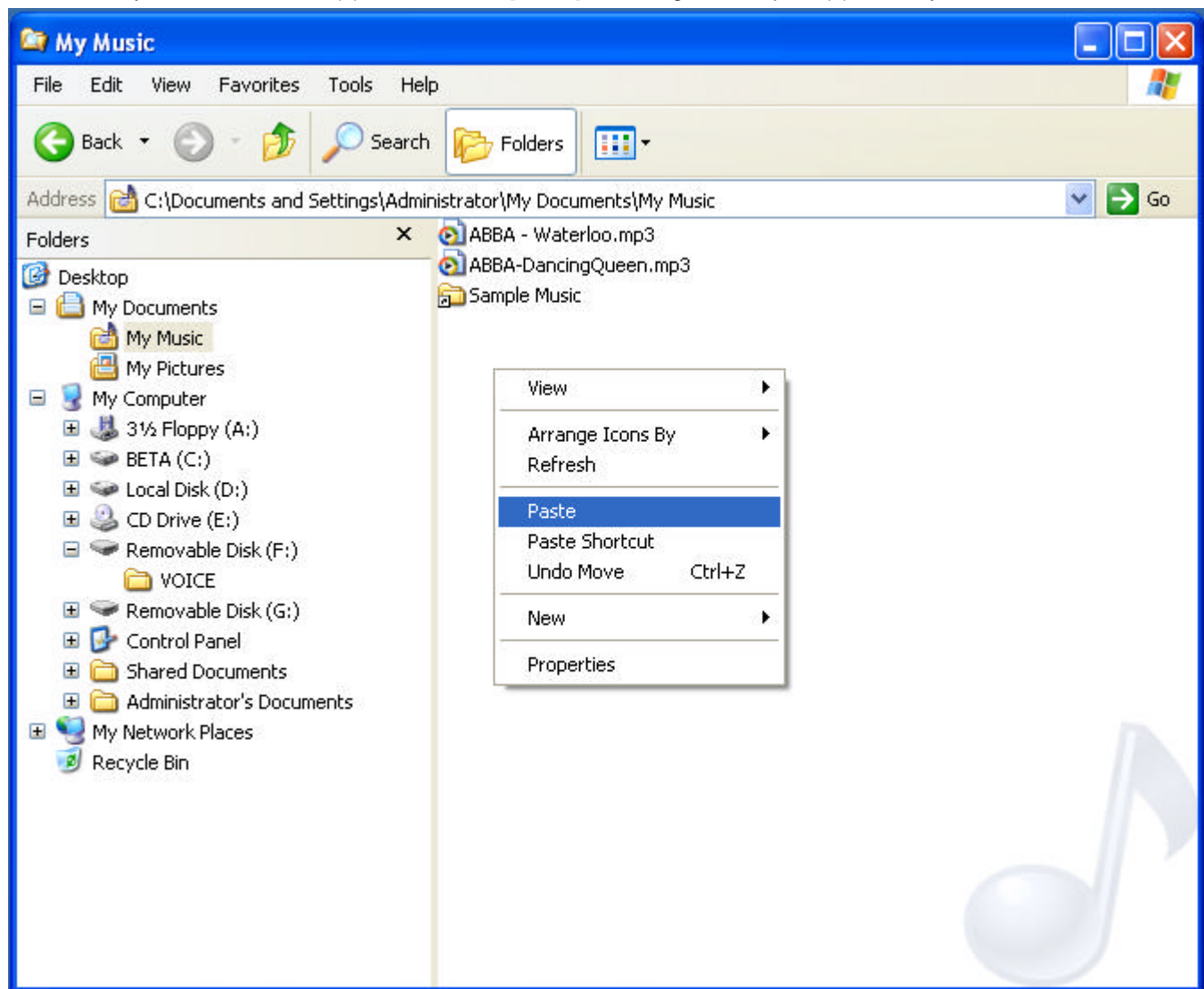
1. Select file(s) you wish to upload in the right window of the windows explorer.



2. Click the right button of your mouse and select the [Copy].

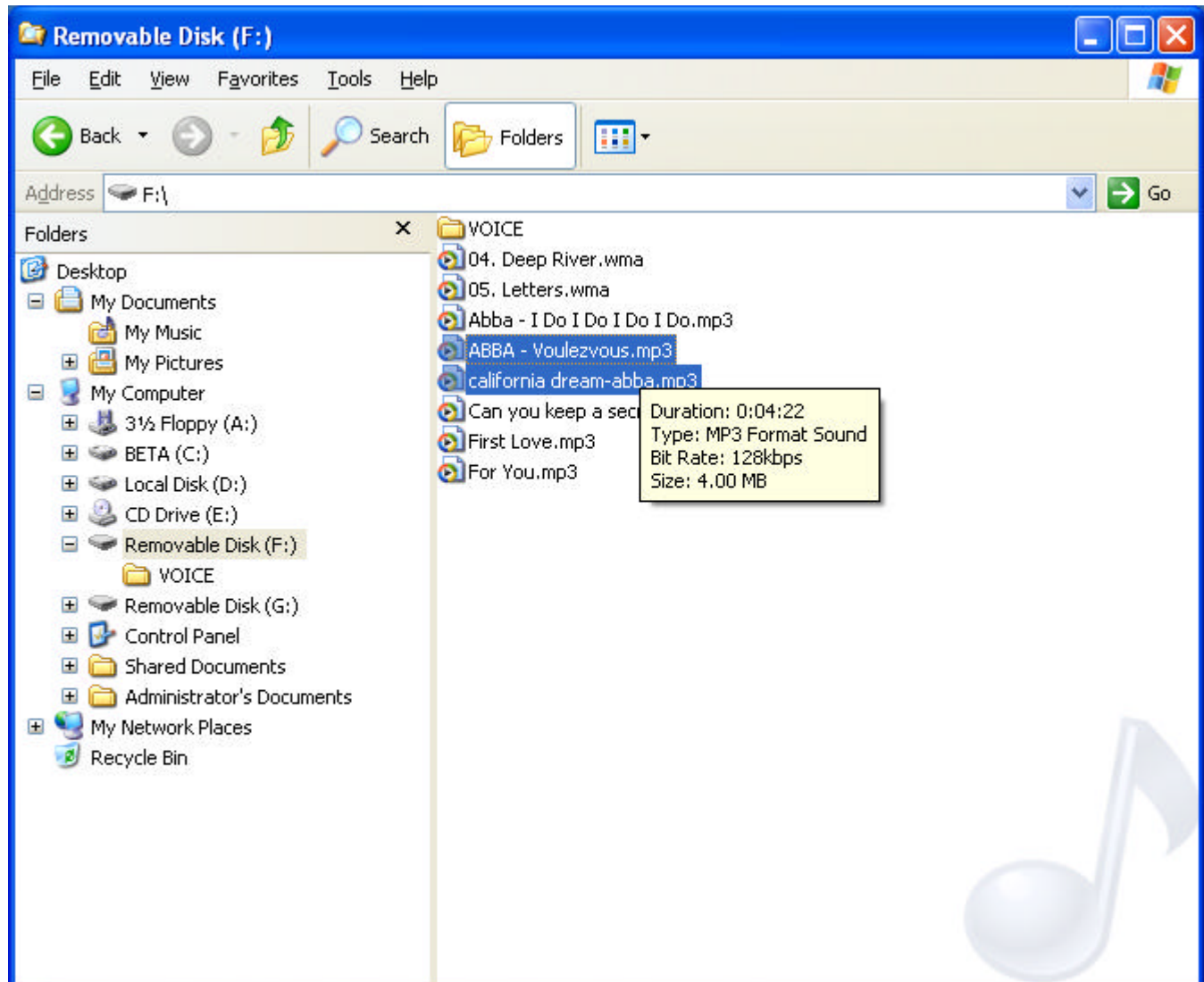


3. Select any folder to save file(s) and click the [Paste]. Or drag and drop file(s) where you want to save.

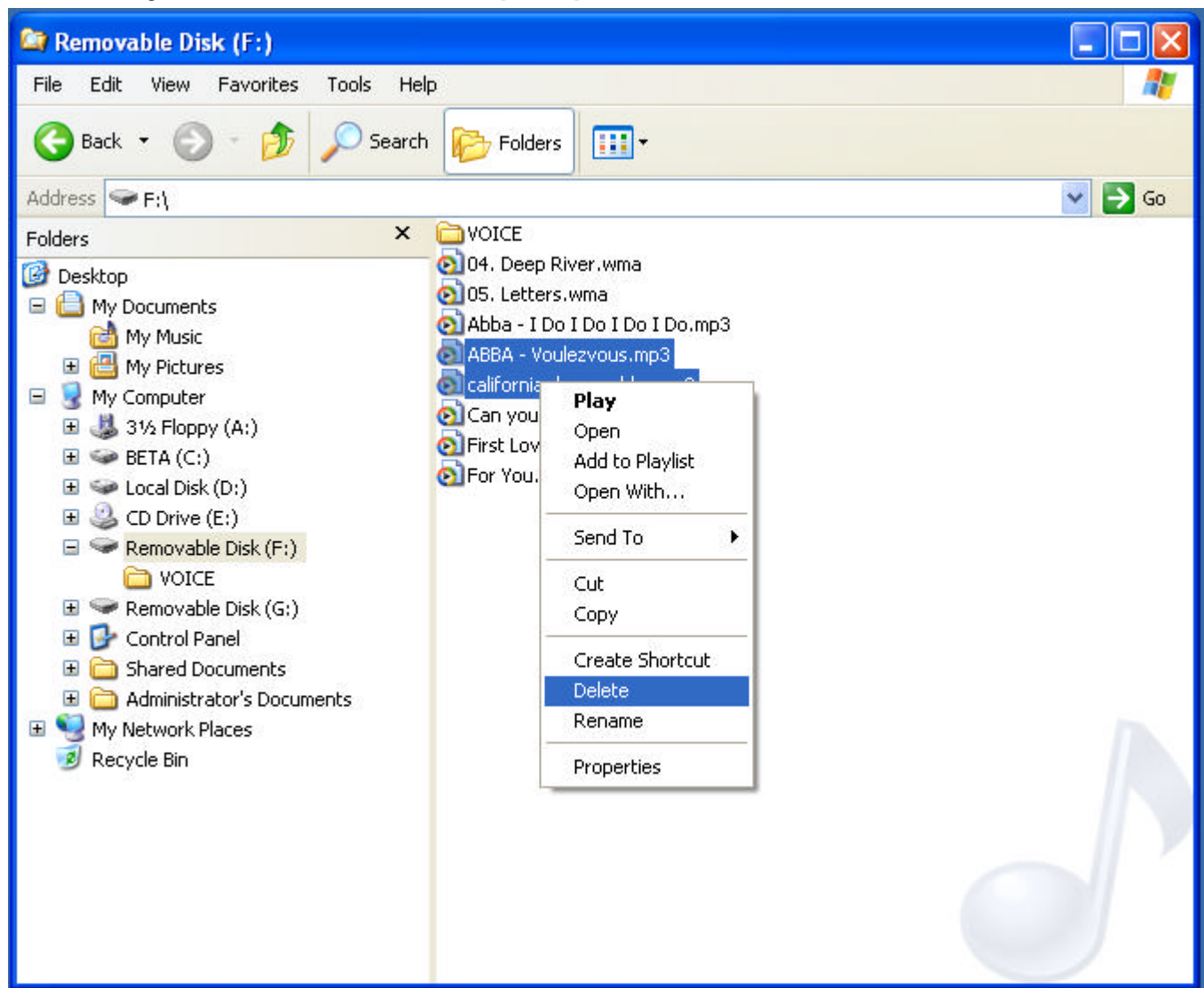


Deleting File

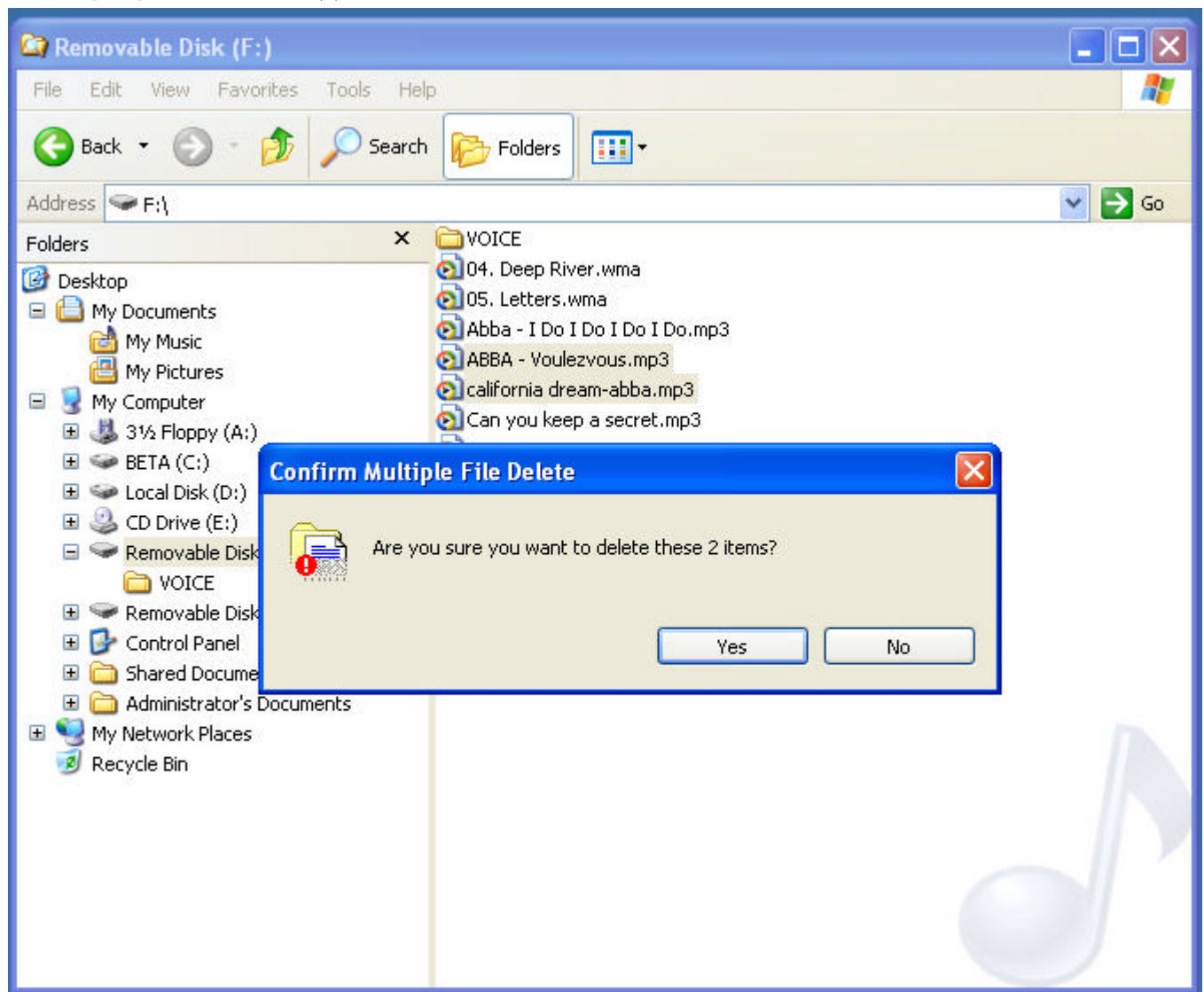
1. Select file(s) you wish to delete on the right window of the windows explorer.



2. Click the right button of the mouse and click [Delete].



3. Click [Yes] to delete the file(s).



When you encounter any problem, check the following items.

Symptom	Cause	Action
Nothing is displayed on the LCD screen.	Check whether the battery runs out.	Replace the battery with a new one.
	Check whether the polarities are correct.	Make sure that the polarities are correct.
Cannot record.	Check whether the HOLD button is set to ON.	Set the HOLD button to OFF.
	Check whether the memory is full.	Delete unnecessary files.
	Check whether the battery runs out.	Replace the battery with a new one.
Cannot playback.	Check whether the HOLD button is set to ON.	Set the HOLD button to OFF.
	Check whether the product has the saved files.	Check the file number.
	Check whether the battery runs out.	Replace the battery with a new one.
Cannot hear sound through the earphone.	Check the volume is set to 0.	Control the volume.
	Check whether the earphone is connected firmly and correctly.	Connect the earphone firmly and correctly.
Cannot download or upload files.	Check whether the power is ON.	Turn the power ON and connect to the PC.
	Check whether the driver is installed.	Install the driver.
	Check the connection between product and PC.	Connect the USB cable firmly and correctly.

Specifications

Item		Specification	
Model		MMP-R330	MMP-R630
Memory		64 MB	128 MB
Battery Life Time		MP3 playback: approx. 00 hours Voice playback: approx. 00 hours Voice recording: approx. 00 hours	
Frequency		500 Hz ~ 3500 Hz	
Bit Rate		8Kbps ~ VBR	
Codec	MP3	MPEG 1, 2, WMA, AAC	
	VOICE	ADPCM IMA	
External Input	Earphone	3mW, 160 Ohm	
	USB cable	PC Interface USB 1.1	
Dimension		31*70 *15.9 mm(W * H * D)	
Weight		About 248g(without battery)	
Storage Media		Ebeded Flash Memory	
Power Source		1.5V AAA Alkaline * 1	
Operating Temperature		0 ~ 40	
Accessories		User Manual, Earphone, AAA Alkaline Battery 1, USB Cable, Diver CD	

The specifications and appearance of the product may change without notice in order to improve the quality.

THIS DEVICE COMPLIES WITH PART 15 OF THE FCC RULES. OPERATION IS SUBJECT TO THE FOLLOWING TWO CONDITIONS: (1) THIS DEVICES MAY NOT CAUSE HARMFUL INTERFERENCE, AND (2) THIS DEVICE MUST ACCEPT ANY INTERFERENCE, RECEIVED, INCLUDING INTERFERENCE THAT MAY CAUSE UNDERSIRED OPERATION.

Note : This equipment has been tested and found to comply with the limits for a Class B digital device, pursuant to part 15 of the FCC Rules. These limits are designed to provide reasonable protection against harmful interference in a residential installation. This equipment generates, uses and can radiate radio frequency energy and, if not installed and used in accordance with the instructions, may cause harmful interference to radio communications. However, there is no guarantee that interference will not occur in a particular installation. If this equipment does cause harmful interference to radio or television reception, which can be determined by turning the equipment off and on, the user is encouraged to try to correct the interference by one or more of the following measures :

- Reorient or relocate the receiving antenna.
- Increase the separation between the equipment and receiver.
- Connect the equipment into an outlet on a circuit different from that to which the receiver is connected.
- Consult the dealer or an experienced radio/TV technician for help.

NOTE: THE MANUFACTURER IS NOT RESPONSIBLE FOR ANY RADIO OR TV INTERFERENCE CAUSED BY UNAUTHORIZED MODIFICATIONS TO THIS EQUIPMENT. SUCH MODIFICATIONS COULD VOID THE USER'S AUTHORITY TO OPERATE THE EQUIPMENT.