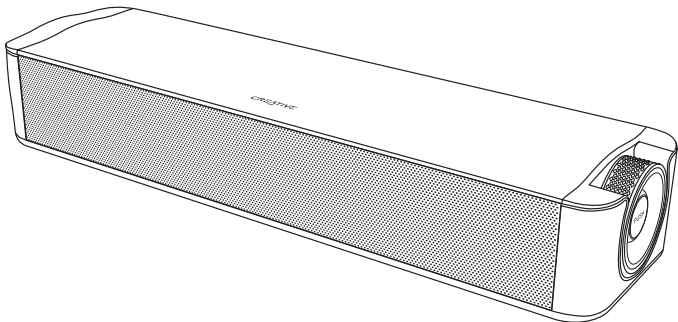


# CREATIVE® STAGE SE

Under-monitor Soundbar With *Bluetooth®*  
And USB Digital Audio



## QUICK START GUIDE

使用产品前请阅读使用说明  
MODEL NO / 型号/ 型號: MF8410

PN: 03MF841000000 Rev A



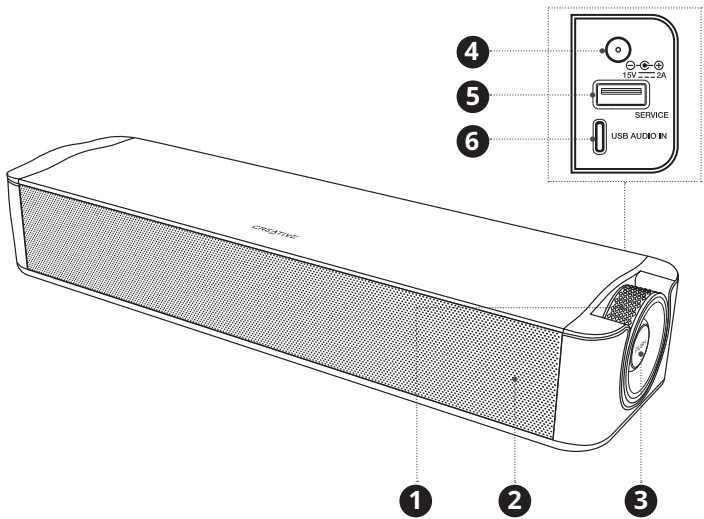
**MULTI-LANGUAGE QUICK START GUIDE DOWNLOAD**  
[creative.com/support/StageSE](https://creative.com/support/StageSE)

- [FR] TÉLÉCHARGEMENT DU GUIDE DE DÉMARRAGE RAPIDE MULTI-LANGUES  
[DE] MEHRSPRACHIGE SCHNELLSTARTANLEITUNG HERUNTERLADEN  
[ES] DESCARGA DE LA GUÍA DE INICIO RÁPIDO EN MÚLTIPLES IDIOMAS  
[IT] DOWNLOAD DELLA GUIDA DI AVVIO RAPIDO MULTILINGUA  
[NL] MEERTALIGE SNELSTARTGIDS DOWNLOAD  
[RU] МНОГОЯЗЫЧНОЕ КРАТКОЕ РУКОВОДСТВО ЗАГРУЗИТЬ  
[PL] POBIERZ PRZEWODNIK SZYBKIEGO STARTU W WIELU JĘZYKU  
[CZ] STÁHNOUT VÍCEJAZYKOVÝ RYCHLÝ NÁVOD K POUŽITÍ  
[SK] STIAHNUŤ SI RÝCHLY NÁVOD NA ŠTARTOVANIE VIAC JAZYKOV  
[JP] 多言語クイックスタートガイドのダウンロード  
[CS] 下载多语言快速使用指南  
[CT] 下载多语言快速使用指南  
[KO] 다국어 빠른 시작 가이드 다운로드  
[NO] NEDLASTING AV HURTIGSTARTVEILEDNING FOR FLERE SPRÅK  
[FI] MONIKIELINEN PIKA-ALOITUSOPPAAN LATAUS  
[SV] FLERSPRÅKIG SNABBSTARTSGUIDE LADDA NER  
[DA] DOWNLOAD AF HURTIG STARTVEJLEDNING PÅ FLERE SPROG

REGISTER  
YOUR PRODUCT  
[creative.com/register](https://creative.com/register)

TECHNICAL SUPPORT  
[creative.com/support](https://creative.com/support)

### OVERVIEW



- 1 Volume Control Knob  
2 LED Indicator  
3 Multifunction Button (Power, Source Selection, *Bluetooth®*)  
4 DC-in Power Port  
5 USB-A Port (For Firmware Updates Only)  
6 USB-C Port (For USB Audio Playback)

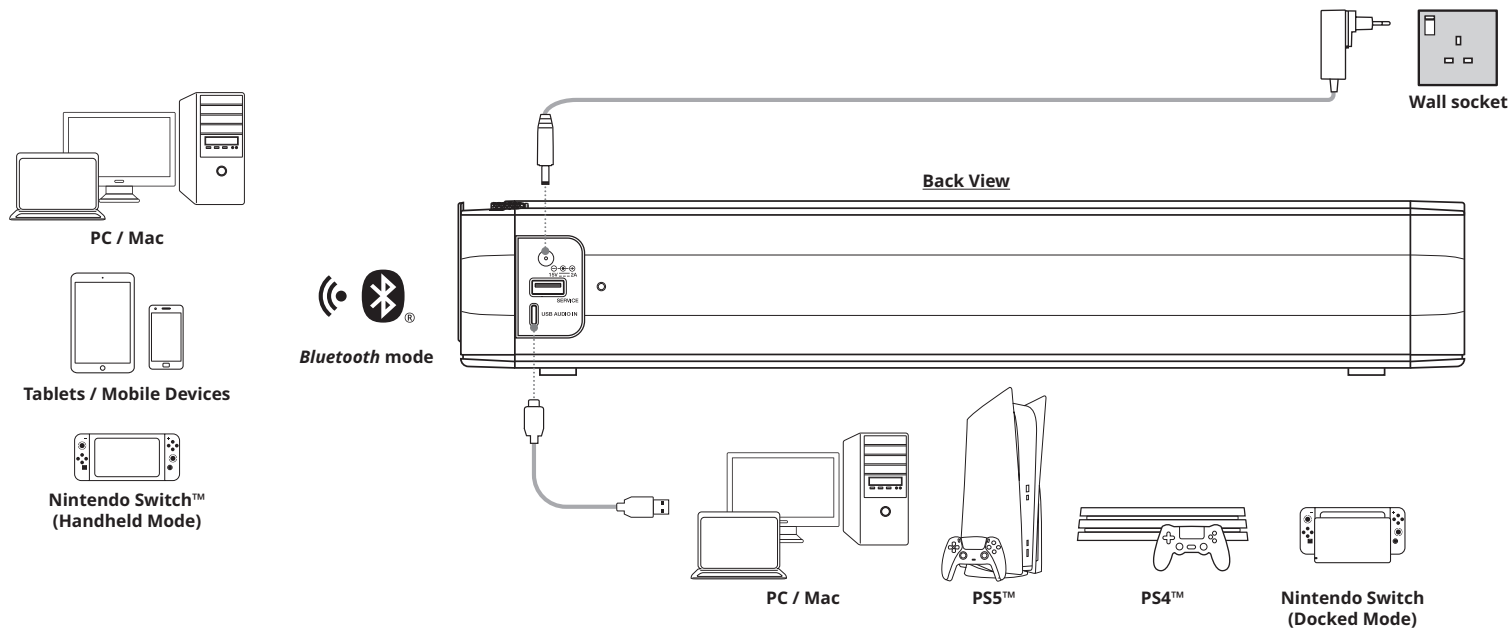
### CONTROLS

Button	Action	Function
	 2s	 ON / OFF
	 x1	 USB AUDIO ↔ <i>Bluetooth®</i>
	 x2	 VOICE PROMPT ON / VOICE PROMPT OFF
		 +
		 -

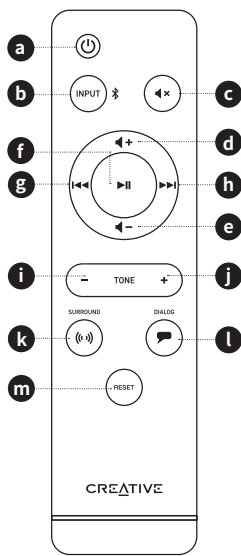
**Note:** Creative Stage SE will automatically initiate *Bluetooth* pairing when it's powered on and the source input is switched to *Bluetooth*. By default, the soundbar's source input is USB audio. The soundbar will remain in the last used source input subsequently.

LED Indicator	Soundbar State
 Solid Red	Standby
 Solid Purple	USB Audio
 Blinking Blue	<i>Bluetooth</i> Pairing Mode
 Solid Blue	<i>Bluetooth</i> Paired
 Blinking LED (Source Color)	Volume Adjustment

CONNECTIVITY



IR REMOTE CONTROL

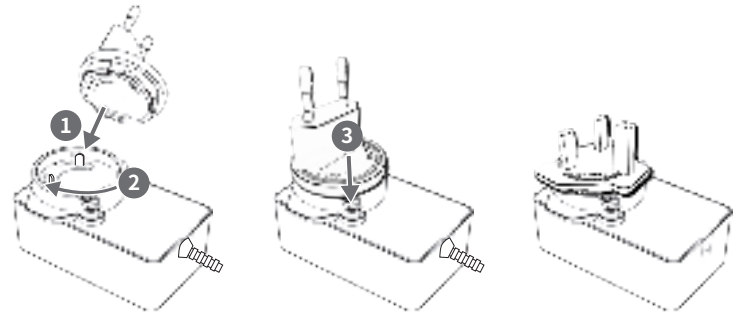


- a Power Button**  
Press once to turn on the soundbar.  
Press once again to turn it off.
- b Input Selection Button**  
Press once to switch between USB Audio mode and Bluetooth mode.  
Press and hold for 2s to initiate Bluetooth pairing mode.
- c Mute Button**  
Press once to mute the soundbar.  
Press once again to unmute.
- d Volume + Button**  
Press once to increase volume.  
Press and hold to incrementally increase volume.
- e Volume - Button**  
Press once to decrease volume.  
Press and hold to incrementally decrease volume.
- f Play / Pause Button**  
Press once to play / pause audio playback.
- g Previous Track Button**  
Press once to return to previous track.
- h Next Track Button**  
Press once to skip to next track.
- i Tone - Button**  
Press to increase audio warmth, this will increase the prominence of bass reproduction and vocals.
- j Tone + Button**  
Press to increase audio brilliance, this will increase the prominence of high and upper mid frequencies, making the audio crisper.
- k Surround Button**  
Press once to activate Surround mode.  
Press once again to turn it off.
- l Dialog Button**  
Press once to activate Dialog Plus mode.  
Press once again to turn it off.
- m Reset Button**  
Press once to revert all changes made, including Tone, Surround, and Dialog settings.

INTERCHANGEABLE AC PLUGS

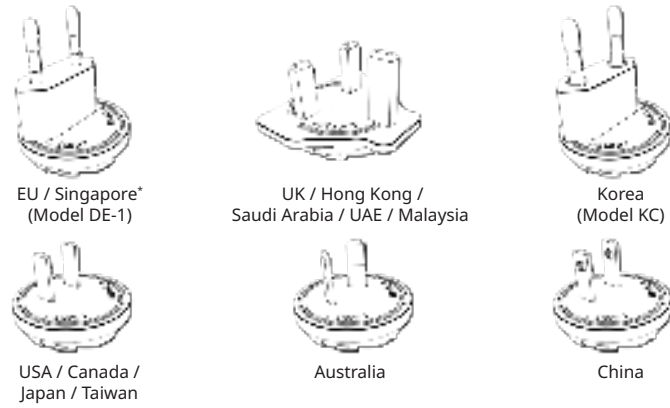
Creative Stage SE features a power adapter with interchangeable AC plugs, suitable for use in multiple regions. Refer to the instructions below for more information.

Replacing Interchangeable AC Plugs



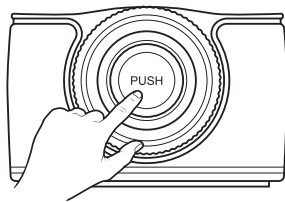
- i) Place the AC plug on the power adapter, then push it down and turn clockwise direction to lock it
- ii) Press to release the AC plug from its attachment
- iii) To replace or reattach the AC plug, refer to the initial steps given

**Note:** Interchangeable AC plug(s) are bundled based on the requirements in their respective countries and are suitable for use in regions using the same AC plugs.



\*For Singapore, only bundled EU AC plug is available.

MASTER RESET



8s

Press and hold the Multifunction button for 8s to perform a Master Reset. Upon completion, a voice prompt will trigger with the prompt "Reset To Factory Default" and the soundbar will revert to its default state. Master Reset is reserved for cases where users encounter issues while the soundbar is in use or during situations such as: Bluetooth Pairing failure, random LED blinks, or to reset all data.

TECHNICAL SPECIFICATIONS

- Power Output:** 12W RMS x 2  
**Total System Peak Power:** 48W  
**Frequency Range:** 50-20,000 Hz  
**SNR:** ≥ 85 dB  
**Operating Frequency:** 2402-2480 MHz  
**Operating Range:** Up to 10m / 33 ft, measured in open space. Walls and structures may affect range of device  
**Maximum RF Output Power:** 7 dBm  
**Bluetooth Version:** Bluetooth 5.3  
**Supported Bluetooth Profiles:** A2DP (Advanced Audio Distribution Profile), AVRCP (Audio / Video Remote Control Profile)  
**Supported Codec:** SBC  
**Soundbar Input Rating:** 15V  $\pm$  2.0A  
**Max Operating Temperature:** 45°C  
**Power Adapter Model:** GJ30WD-1500200DP  
**Input:** 100-240V~, 50/60 Hz 0.8A  
**Output:** 15V  $\pm$  2.0A, 30.0W  
**For CS (China):** 频率范围: 2400-2483.5 MHz  
**Note:** Compliance marking are located at the bottom of this product

## SAFETY & REGULATORY INFORMATION

The following sections contain notices for various countries.

### CAUTION:

This product is intended for use with FCC/CE certified computer equipment. Please check the equipment operating/installation manual and/or with the equipment manufacturer to verify/confirm if your equipment is suitable prior to the installation or use of the product.

## Notice for USA

### Federal Communication Commission (FCC) Interference Statement

**FCC Part 15:** This equipment has been tested and found to comply with the limits for a Class B digital device, pursuant to Part 15 of the FCC Rules. These limits are designed to provide reasonable protection against harmful interference in a residential installation. This equipment generates, uses and can radiate radio frequency energy and, if not installed and used in accordance with instructions, may cause harmful interference to radio communications. However, there is no guarantee that interference will not occur in a particular installation. If this equipment does cause harmful interference to radio or television reception, which can be determined by turning the equipment off and on, the user is encouraged to try to correct the interference by one or more of the following measures:

- Reorient or relocate the receiving antenna.
- Increase the separation between the equipment and receiver.
- Connect the equipment to an outlet on a circuit different from that to which the receiver is connected.
- Consult the dealer or an experienced radio/TV technician for help.

This device complies with part 15 of the FCC Rules. Operation is subjected to the following two conditions:

1. This device may not cause harmful interference, and
2. This device must accept any interference received, including interference that may cause undesired operation.

**CAUTION:** To comply with the limits of the Class B digital device, pursuant to Part 15 of the FCC Rules, this device must be installed with computer equipment certified to comply with Class B limits.

All cables used to connect to the computer and peripherals must be shielded and grounded. Operation with non-certified computers or non-shielded cables may result in interference to radio or television reception.

**MODIFICATION:** Any changes or modifications not expressly approved by the grantee of this device could void the user's authority to operate the device.

### Federal Communication Commission (FCC) Radiation Exposure Statement

This equipment complies with FCC radiation exposure limits set forth for an uncontrolled environment.

This equipment should be installed and operated with minimum distance 20cm between the radiator and your body. This transmitter must not be co-located or operating in conjunction with any other antenna or transmitter.

### Notice for Canada

This device contains licence-exempt transmitter(s)/receiver(s) that comply with Innovation, Science and Economic Development Canada's licence-exempt RSS(s). Operation is subject to the following two conditions:

1. This device may not cause interference.
2. This device must accept any interference, including interference that may cause undesired operation of the device.

L'émetteur/récepteur exempt de licence contenu dans le présent appareil est conforme aux CNR d'Innovation, Sciences et Développement économique Canada applicables aux appareils radio exempts de licence. L'exploitation est autorisée aux deux conditions suivantes:

1. L'appareil ne doit pas produire de brouillage;
2. L'appareil doit accepter tout brouillage radioélectrique subi, même si le brouillage est susceptible d'en compromettre le fonctionnement.

To comply with RSS 102 RF exposure compliance requirements, a separation distance of at least 20cm must be maintained between the antenna of this device and all persons.

Pour se conformer aux exigences de conformité CNR 102 RF exposition, une distance de séparation d'au moins 20 cm doit être maintenue entre l'antenne de cet appareil et toutes les personnes.

**MODIFICATION:** Any changes or modification not expressly approved by the grantee of this device could void the user's authority to operate the device.

Toute modification non approuvée explicitement par le fournisseur de licence de l'appareil peut entraîner l'annulation du droit de l'utilisateur à utiliser l'appareil.