

SAR Test Report - New Application

Applicant:



Uniden America Corporation
6225 N. State Highway 161
Suite 300
Irving, Tx, 75038, USA

FCC ID:

AMWUT664

Product Model Number / HVIN

UT664

Maximum Reported 1g SAR

FCC	FACE:	1.10	W/kg
	BODY:	1.37	
ISED	BODY:	1.10	
	BODY:	1.37	
General Pop. Limit:		1.60	

IC Registration Number

513C-UT664

Product Name / PMN

MHS75

In Accordance With:

FCC 47 CFR §2.1093

Radiofrequency Radiation Exposure Evaluation: Portable Devices

IC RSS-102 Issue 5

Radio Frequency Exposure Compliance of Radiocommunication Apparatus (All Frequency Bands)

Approved By:



Ben Hewson, President

Celltech Labs Inc.
21-364 Lougheed Rd.
Kelowna, BC, V1X 7R8
Canada



Test Lab Certificate: 2470.01



**Industry
Canada**

IC Registration 3874A



FCC Registration: CA3874

This report shall not be reproduced in any form without the expressed written consent of Celltech Labs Inc.

Table of Contents

1.0 DOCUMENT CONTROL	4
2.0 CLIENT AND DEVICE INFORMATION	5
3.0 SCOPE OF EVALUATION	6
4.0 NORMATIVE REFERENCES	7
5.0 STATEMENT OF COMPLIANCE	8
6.0 SAR MEASUREMENT SYSTEM	9
7.0 RF CONDUCTED POWER MEASUREMENT	10
TABLE 7.1 CONDUCTED POWER MEASUREMENTS	10
8.0 NUMBER OF TEST CHANNELS (N_C)	11
TABLE 8.1 NUMBER OF TEST CHANNELS	11
9.0 ACCESSORIES EVALUATED	12
TABLE 9.1 MANUFACTURER'S ACCESSORY LIST	12
10.0 SAR MEASUREMENT SUMMARY	13
TABLE 10.1: MEASURED RESULTS – BODY/FACE	13
11.0 SCALING OF MAXIMUM MEASURE SAR	14
TABLE 11.1 SAR SCALING	14
12.0 SAR EXPOSURE LIMITS	16
TABLE 12.1 EXPOSURE LIMITS	16
13.0 DETAILS OF SAR EVALUATION	17
13.1 DAY LOG	17
13.2 DUT SETUP AND CONFIGURATION	18
13.3 DUT POSITIONING	18
13.4 GENERAL PROCEDURES AND REPORT	19
13.5 FLUID DIELECTRIC AND SYSTEMS PERFORMANCE CHECK	20
13.6 SCAN RESOLUTION 100MHz TO 2GHz	20
13.7 SCAN RESOLUTION 2GHz TO 3GHz	21
13.8 SCAN RESOLUTION 5GHz TO 6GHz	21
14.0 MEASUREMENT UNCERTAINTIES	22
TABLE 14.1 MEASUREMENT UNCERTAINTY	22
TABLE 14.2 CALCULATION OF DEGREES OF FREEDOM	23
15.0 FLUID DIELECTRIC PARAMETERS	24
TABLE 15.1 FLUID DIELECTRIC PARAMETERS 150MHz HEAD TSL	24
16.0 SYSTEM VERIFICATION TEST RESULTS	25
TABLE 16.1 SYSTEM VERIFICATION RESULTS 150MHz HEAD TSL	25
17.0 SYSTEM VALIDATION SUMMARY	26
TABLE 17.1 SYSTEM VALIDATION SUMMARY	26
18.0 MEASUREMENT SYSTEM SPECIFICATIONS	27
TABLE 18.1 MEASUREMENT SYSTEM SPECIFICATIONS	27

19.0 TEST EQUIPMENT LIST	29
TABLE 19.1 EQUIPMENT LIST AND CALIBRATION	29
20.0 FLUID COMPOSITION	30
TABLE 20.1 FLUID COMPOSITION 150MHz HEAD TSL	30
APPENDIX A – SYSTEM VERIFICATION PLOTS.....	31
APPENDIX B – MEASUREMENT PLOTS OF MAXIMUMUM MEASURED SAR	33
APPENDIX C – PROBE CALIBRATION.....	37
APPENDIX D – DIPOLE CALIBRATION	38
APPENDIX E - PHANTOM	39

1.0 DOCUMENT CONTROL

Revision History				
Samples Tested By:		Ben Hewson		Date(s) of Evaluation: 8 - 9 November 2021
Report Prepared By:		Art Voss, P.Eng.		Report Reviewed By: Ben Hewson
Report Revision	Description of Revision		Revised Section	Revised By
1.0	Initial Release		n/a	Art Voss
				Revision Date
				10 December 2021

2.0 CLIENT AND DEVICE INFORMATION

Client Information	
Applicant Name	Uniden America Corporation
Applicant Address	6225 N. State Highway 161, Suite 300
	Irving, TX, 75038
	USA
DUT Information	
Device Identifier(s):	FCC ID: AMWUT664
	ISED ID: 513C-UT664
Device Type:	Portable FM VHF PTT Transceiver
Type of Equipment:	Analog FM Transceiver
Device Model(s) / HVIN:	UT664
Device Marketing Name / PMN:	MHS75
Firmware Version ID Number / FVIN:	-
Host Marketing Name / HMN:	-
Test Sample Serial No.:	T/A Sample - Identical Prototype
Transmit Frequency Range:	Tx: 156.05 - 157.425MHz, Rx: 156.05 - 162.55MHz
Number of Channels:	60 Channel Programmable
Manuf. Max. Rated Output Power:	30dBm (1W), 34dBm, (2.5W), 37 dBm +/- .5dB, (5W)
Manuf. Max. Rated BW/Data Rate:	n/a
Antenna Make and Model:	1/4 Wavelength Stub
Antenna Type and Gain:	-2 dBi
Modulation:	FM
Mode:	Simplex/Duplex
DUT Power Source:	7.4V Li-Ion Rechargeable
DUT Dimensions [LxWxH] (mm)	110 (230w/Antenna) x 70 x 45
Deviation(s) from standard/procedure:	None
Modification of DUT:	None

3.0 SCOPE OF EVALUATION

This Certification Report was prepared on behalf of:

Uniden America Corporation

,(the '*Applicant*'), in accordance with the applicable Federal Communications Commission (FCC) CFR 47 and Innovation, Scientific and Economic Development (ISED) Canada rules parts and regulations (the '*Rules*'). The scope of this investigation was limited to only the equipment, devices and accessories (the '*Equipment*') supplied by the *Applicant*. The tests and measurements performed on this *Equipment* were only those set forth in the applicable *Rules* and/or the Test and Measurement Standards they reference. The *Rules* applied and the Test and Measurement Standards used during this evaluation appear in the Normative References section of this report. The limits set forth in the technical requirements of the applicable *Rules* were applied to the measurement results obtained during this evaluation and ,unless otherwise noted, these limits were used as the Pass/Fail criteria. The Pass/Fail statements made in this report apply to only the tests and measurements performed on only the *Equipment* tested during this evaluation. Where applicable and permissible, information including test and measurement data and/or results from previous evaluations of same or similar equipment, devices and/or accessories may be cited in this report.

Device Description:

The UT664 is a 5W, FM, portable handheld Maritime Services Push-To-Talk (PTT) transceiver operating in the 156.05MHz - 157.425MHz VHF band. It contains the FM transceiver and no other transmitters.

Regulatory Requirement:

As per FCC 47 CFR Part §2.1093 and Health Canada Safety Code 6, an RF Exposure evaluation report is required for this *Equipment* and the results of the RF Exposure evaluation appear in this report.

Filing:

This is an application for new certification.

Scope:

The scope of this evaluation is to evaluate the SAR for intended use applications. It will include evaluation of the VHF band transmitter for all required RF exposure configurations and accessories types. The Test Plan developed for this evaluation is based on the required test channels and configurations wproducing the highest worst case SAR. Where applicable, SAR test reduction and/or SAR test exclusion may be utilized. Test procedures are based on the requirements IEEE 1528-62209, IEC 62209-2, FCC KDB 865646, 447498, 643646 and RSS 102.

4.0 NORMATIVE REFERENCES

Normative References*	
ANSI / ISO 17025:2005	General Requirements for competence of testing and calibration laboratories
FCC CFR Title 47 Part 2 Title 47: Part 2.1093:	Code of Federal Regulations Telecommunication Radiofrequency Radiation Exposure Evaluation: Portable Devices
Health Canada Safety Code 6 (2015)	Limits of Human Exposure to Radiofrequency Electromagnetic Energy in the Frequency Range from 3kHz to 300GHz
Industry Canada Spectrum Management & Telecommunications Policy RSS-102 Issue 5:	Radio Frequency Exposure Compliance of Radiocommunication Apparatus (All Frequency Bands)
IEEE International Committee on Electromagnetic Safety IEEE 1528-2013:	IEEE Recommended Practice for Determining the Peak Spatial-Average Specific Absorption Rate (SAR) in the Human Head from Wireless Communications Devices: Measurement Techniques
IEC International Standard IEC 62209-2 2010	Human exposure to radio frequency fields from hand-held and body-mounted wireless communication devices - Part 2
IEC International Standard /IEEE International Committee on Electromagnetic Safety IEC/IEEE 62209-1528	Measurement procedure for the assessment of specific absorption rate of human exposure to radio frequency fields from hand-held and body-mounted wireless communication devices - Part 1528; Human models, instrumentation, and procedures (Frequency range of 4 MHz to 10 GHz)
FCC KDB KDB 865664 D01v01r04	SAR Measurement Requirements for 100MHz to 6GHz
FCC KDB KDB 447498 D01v06	Mobile and Portable Devices RF Exposure Procedures and Equipment Authorization Policies
* When the issue number or issue date is omitted, the latest version is assumed.	

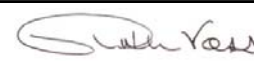
5.0 STATEMENT OF COMPLIANCE

This measurement report demonstrates that samples of the product model(s) were evaluated for Specific Absorption Rate (SAR) on the date(s) shown, in accordance with the Measurement Procedures cited and were found to comply with the Standard(s) Applied based on the Exposure Limits of the Use Group indicated for which the product is intended to be used.

Applicant:	Date(s) Evaluated:
Uniden America Corporation	8 - 9 November 2021
Module Product Name / PMN:	Module Product Model Number / HVIN:
MHS75	UT664
Standard(s) Applied:	
FCC 47 CFR §2.1093	
Health Canada's Safety Code 6	
Measurement Procedures:	
FCC KDB 865664, FCC KDB 447498, FCC KDB 247228	
Industry Canada RSS-102 Issue 5	
IEEE Standard 1528-2013, IEC 62209-2	
Use Group:	Limits Applied:
<input checked="" type="checkbox"/> General Population / User Unaware	<input checked="" type="checkbox"/> 1.6W/kg - 1g Volume - Body/Head/Face
<input type="checkbox"/> Occupational / User Aware	<input type="checkbox"/> 8.0W/kg - 1g Volume - Body/Head/Face
	<input type="checkbox"/> 4.0W/kg - 10g Volume - Extremity
Reason for Issue:	
<input checked="" type="checkbox"/> New Certification	<input type="checkbox"/> Class II Permissive Change
Reason for Change:	

The results of this investigation are based solely on the test sample(s) provided by the applicant which was not adjusted, modified or altered in any manner whatsoever except as required to carry out specific tests or measurements. A description of the device, operating configuration, detailed summary of the test results, methodologies and procedures used during this evaluation, the equipment used and the various provisions of the rules are included in this test report.

I attest that the data reported herein is true and accurate within the tolerance of the Measurement Instrument Uncertainty; that all tests and measurements were performed in accordance with accepted practices or procedures; and that all tests and measurements were performed by me or by trained personnel under my direct supervision. The results of this investigation are based solely on the test sample(s) provided by the client which were not adjusted, modified or altered in any manner whatsoever, except as required to carry out specific tests or measurements. This test report has been completed in accordance with ISO/IEC 17025.


Art Voss, P.Eng.
Technical Manager
Celltech Labs Inc.
10 December 2021
Date



6.0 SAR MEASUREMENT SYSTEM

SAR Measurement System

Celltech Labs Inc. SAR measurement facility employs a Dosimetric Assessment System (DASY™) manufactured by Schmid & Partner Engineering AG (SPEAG™) of Zurich, Switzerland. The DASY6 measurement system is comprised of the measurement server, a robot controller, a computer, a near-field probe, a probe alignment sensor, an Elliptical Planar Phantom (ELI) phantom and a specific anthropomorphic mannequin (SAM) phantom for Head and/or Body SAR evaluations. The robot is a six-axis industrial robot performing precise movements to position the probe to the location (points) of maximum electromagnetic field (EMF). A cell controller system contains the power supply, robot controller and a teach pendant (Joystick) to control the robot's servo motors. The Staubli robot is connected to the cell controller to allow software manipulation of the robot. A data acquisition electronic (DAE) circuit performs the signal amplification, signal multiplexing, AD-conversion, offset measurements, mechanical surface detection, collision detection, etc. is connected to the Electro-optical coupler (EOC). The EOC performs the conversion from the optical form the DAE to digital electronic signal and transfers data to the DASY6 measurement server. The DAE4 utilizes a highly sensitive electrometer-grade preamplifier with auto-zeroing, a channel and gain-switching multiplexer, a fast 16-bit AD-converter, a command decoder and a control logic unit. Transmission to the DASY6 measurement server is accomplished through an optical downlink for data and status information and an optical uplink for commands and clock lines. The mechanical probe-mounting device includes two different sensor systems for frontal and sidewise probe contacts. The sensor systems are also used for mechanical surface detection and probe collision detection. The robot utilizes a controller with built in VME-bus computer.



DASY 6 SAR System



DASY 6 Measurement Controller

7.0 RF CONDUCTED POWER MEASUREMENT

Table 7.1 Conducted Power Measurements

Conducted Power Measurement Results:								
Power Setting	Channel Number	Frequency (MHz)	Modulation	Measured Power [P _{Meas}] (dBm)	Measured Power [P _{Meas}] (W)	Limit [P _{Lim}] (dBm)	Limit [P _{Lim}] (W)	Margin (dB)
5W	1	156.05	CW	36.60	4.57	37.8	6.0	1.2
	74	156.73		36.53	4.50			1.3
	88	157.43		36.54	4.51			1.3
2.5W	1	156.05		33.62	2.30			4.2
	74	156.73		33.64	2.31			4.2
	88	157.43		33.68	2.33			4.1
1W	1	156.05		28.91	0.78			8.9
	74	156.73		28.81	0.76			9.0
	88	157.43		28.92	0.78			8.9
Result:								Complies

Conducted Margin = $P_{\text{Limit}} - P_{\text{Meas}}$

*The rated power and tolerance are stated for typical transmission modes and data rates. Some modes and data rates may produce lower than rated conducted power levels. Continuous Wave (CW) mode is a test mode not typical with normal transmission modes and may produce higher than rated conducted power levels. Power measurements taken across the various channels, modes and data rates did not produce levels in excess of the Rated Power plus Tolerance. SAR was evaluated using .CW mode at the Maximum output power level setting and produced the most conservative SAR. The reported SAR was not scaled down.

8.0 NUMBER OF TEST CHANNELS (N_C)

Table 8.1 Number of Test Channels

Number of Required Test Channels						
Frequency			Number of Channels		Spacing	
f_{LOW} (MHz)	f_{HIGH} (MHz)	f_C (MHz)	KDB 447498 (N_C)	IEC 62209 (N_C)	KDB 447498 (MHz)	IEC 62209 (MHz)
156.05	157.425	156.7375	2	3	1.4	0.7
KDB 447498: $N_C = \text{RoundUp} \{ [100 (F_{HIGH} - F_{LOW}) / F_C]^{0.5} \times (F_C / 100)^{0.2} \}$ IEC 62209-1: $N_C = 2 \times \{ \text{RoundUp} [10 (F_{HIGH} - F_{LOW}) / F_C] \} + 1$						
Notes:						
Per FCC KDB 643646 D01v01r03 (A1)(A2) I) When the Head/Body SAR of an antenna tested in A) is: a) ≤ 3.5 W/kg, testing of all other required channels is not necessary for that antenna b) > 3.5 W/kg and ≤ 4.0 W/kg, testing of the required immediately adjacent channel(s) is not necessary; 3 testing of the other required channels may still be required c) > 4.0 W/kg and ≤ 6.0 W/kg, Head/Body SAR should be measured for that antenna on the required immediately adjacent channels; testing of the other required channels still needs consideration d) > 6.0 W/kg, test all required channels for that antenna						

The number of channels tested was based on Low, Mid and High VHF Channels.

9.0 ACCESSORIES EVALUATED

Table 9.1 Manufacturer's Accessory List

Manufacturer's Accessories Tested - See Addendums for Complete Manufacturer's List			
Test Report ID Number	Manufacturer's Part Number	Description	SAR Evaluated
Antenna			
T1	n/a	Supplied Flexible Whip	X
Battery			
P1	n/a	Supplied Li-Ion (7.4V, 1100mAh)	X
Body-Worn Accessory			
B1	n/a	Supplied Belt Clip	X

10.0 SAR MEASUREMENT SUMMARY

Table 10.1: Measured Results – BODY/FACE

Measured SAR Results (1g) - BODY Configuration (FCC/ISED)															
Date	Plot ID	DUT		Test Frequency (MHz)	Modulation	Accessories				DUT Spacing		Conducted Power (dBm)	Measured SAR (1g)		SAR Drift (dB)
		M/N	Type			Antenna ID	Battery ID	Body ID	Audio ID	DUT (mm)	Antenna (mm)		100% DC (W/kg)	50% DC (W/kg)	
09/11/2021	B1	MHS75	PTT	ch1 -156.050	CW	T1	P1	B1	A1	0	40	36.60	2.330	1.165	-0.600
09/11/2021	B2	MHS75	PTT	ch74-156.725	CW	T1	P1	B1	A1	0	40	36.53	1.890	0.945	-0.660
09/11/2021	B3	MHS75	PTT	ch88-157.425	CW	T1	P1	B1	A1	0	40	36.54	2.380	1.190	-0.140
09/11/2021	B4	MHS75	PTT	ch87-156.725	CW	T1	P1	B1	A1	0	40	36.54	2.330	1.165	-0.010
SAR Limit						Spatial Peak				Head/Body		RF Exposure Category			
FCC 47 CFR 2.1093				Health Canada Safety Code 6		1 Gram Average				1.6 W/kg		General Population/User Unaware			

11.0 SCALING OF MAXIMUM MEASURE SAR

Table 11.1 SAR Scaling

Scaling of Maximum Measured SAR (1g)				
Measured Parameters		Configuration		
		Face	Body	Head
Plot ID		F4	B3	
Maximum Measured SAR _M		0.940	1.190	
Frequency		156.15	157.425	
Power Drift		-0.260	-0.140	
Conducted Power		36.590	36.540	
Fluid Deviation from Target				
Δε	Permittivity	-3.12%	-3.46%	
Δσ	Conductivity	-7.83%	-7.82%	
Fluid Sensitivity Calculation (1g) IEC 62209-2 Annex F				
Delta SAR = Ce * Δε + Cσ * Δσ				(F.1)
Ce = (-0.0007854*f ³) + (0.009402*f ²) - (0.02742*f) - 0.2026				(F.2)
Cσ = (0.009804*f ³) - (0.08661*f ²) + (0.02981*f) + 0.7829				(F.3)
f	Frequency (GHz)	0.15615	0.157425	
	Ce	-0.207	-0.207	
	Cσ	0.785	0.785	
	Ce * Δε	0.006	0.007	
	Cσ * Δσ	-0.062	-0.061	
	ΔSAR	-0.055 (3)	-0.054 (3)	(%)
Note(3): Delta SAR is negative, SAR Adjustment for Fluid Sensitivity is not Required.				
Manufacturer's Tuneup Tolerance				
Measured Conducted Power		36.590	36.540	(dBm)
Rated Conducted Power		37.000	37.000	(dBm)
ΔP		-0.410	-0.460	(dB)
SAR Adjustment for Fluid Sensitivity				
SAR ₁ = SAR _M * ΔSAR		0.940	1.190	(W/kg)
SAR Adjustment for Tuneup Tolerance				
SAR ₂ = SAR ₁ + [ΔP]		1.033	1.323	(W/kg)
SAR Adjustment for Drift				
SAR ₃ = SAR ₂ + Drift		1.097	1.366	(W/kg)
reported SAR				
FCC/ISED = reported SAR		1.10	1.37	(W/kg)

NOTES to Table 11.1

(1) Scaling of the Maximum Measured SAR is based on the highest, 100% duty cycle for Face, Body and/or Head including ALL test channels, configurations and accessories used during THIS evaluation. The Measured Fluid Deviation parameters apply only to deviation of the tissue equivalent fluids used at the frequencies which produced the highest measured SAR. The Measured Conducted Power applies to the Conducted Power measured at the frequencies producing the highest Face and Body SAR. The Measured Drift is the SAR drift associated with that specific SAR measurement. The Reported SAR is the accumulation of all SAR Adjustments from the applicable Steps 1 through 4. The Plot ID is for identification of the SAR Measurement Plots in Annex A of this report.

NOTE: Some of the scaling factors in Steps 1 through 4 may not apply and are identified by light gray text.

Step 1

Per IEC-62209-1 and FCC KDB 865664. Scaling required only when Measured Fluid Deviation is greater than 5%. If the Measured Fluid Deviation is greater than 5%, Table 10.1 will be shown and will indicate the SAR scaling factor in percent (%). SAR is MULTIPLIED by this scaling factor only when the scaling factor is positive (+).

Step 2

Per KDB 447498. Scaling required only when the difference (Delta) between the Measured Conducted Power and the Manufacturer's Rated Conducted Power is (-) Negative. The absolute value of Delta is ADDED to the SAR.

Step 3

Per IEC 62209-1. Scaling required only when Measured Drift is (-) Negative. The absolute value of Measured Drift is added to Reported or Simultaneous Reported SAR.

Step 4

Per KDB 447498 4.3.2. The SAR, either measured or calculated, of ANY and ALL simultaneous transmitters must be added together and includes all contributors.

Step 5

The Reported SAR is the Maximum Final Adjusted Cumulative SAR from the applicable Steps 1 through 4 and are reported on Page 1 of this report.

12.0 SAR EXPOSURE LIMITS

Table 12.1 Exposure Limits

SAR RF EXPOSURE LIMITS			
FCC 47 CFR§2.1093	Health Canada Safety Code 6	General Population / Uncontrolled Exposure ⁽⁴⁾	Occupational / Controlled Exposure ⁽⁵⁾
Spatial Average ⁽¹⁾ (averaged over the whole body)		0.08 W/kg	0.4 W/kg
Spatial Peak ⁽²⁾ (Head and Trunk averaged over any 1 g of tissue)		1.6 W/kg	8.0 W/kg
Spatial Peak ⁽³⁾ (Hands/Wrists/Feet/Ankles averaged over 10 g)		4.0 W/kg	20.0 W/kg
(1) The Spatial Average value of the SAR averaged over the whole body.			
(2) The Spatial Peak value of the SAR averaged over any 1 gram of tissue, defined as a tissue volume in the shape of a cube and over the appropriate averaging time.			
(3) The Spatial Peak value of the SAR averaged over any 10 grams of tissue, defined as a tissue volume in the shape of a cube and over the appropriate averaging time.			
(4) Uncontrolled environments are defined as locations where there is potential exposure to individuals who have no knowledge or control of their potential exposure.			
(5) Controlled environments are defined as locations where there is potential exposure to individuals who have knowledge of their potential exposure and can exercise control over their exposure.			

13.0 DETAILS OF SAR EVALUATION

13.1 Day Log

DAY LOG					Fluid Dielectric	SPC	Test	Task
Date	Ambient Temp (°C)	Fluid Temp (°C)	Relative Humidity (%)	Barometric Pressure (kPa)				
08 Nov 2021	23.5	21.7	22%	102.1	X	X		150H Fluid, SPC
09 Nov 2021	23.8	22.0	23%	100.3			X	150H SAR testing

13.2 DUT Setup and Configuration

DUT Setup and Configuration	
Overview	<p>The UT664 was evaluated for <i>Body</i> and <i>Face</i> SAR at the maximum conducted output power level, preset by the manufacturer, with a fully charged battery in unmodulated continuous transmit operation (FM mode at 100% duty cycle) with the transmit key continuously depressed. For a Push-To-Talk (PTT) device with a manually operated transmit pushbutton, a 50% duty cycle compensation for the <u>reported SAR</u> was used, as per FCC KDB 447498 (6.1).</p> <p>The test procedures outlined in FCC KDB 447498 " General SAR Test Reduction Considerations for " as well as FCC KDB 865664, ISED RSS-102 and IEEE 1528 were used throughout the evaluation of this device in the LMR bands.</p>

13.3 DUT Positioning

DUT Positioning	
Positioning	<p>The DUT Positioner was securely fastened to the Phantom Platform. Registration marks were placed on the DUT and the Positioner to ensure consistent positioning of the DUT for each test evaluation.</p>
FACE Configuration	<p>The DUT was securely clamped into the device holder with the surface of the DUT normally held to the user's face facing the phantom. The device holder was adjusted to ensure that the horizontal axis of the DUT was parallel to the bottom of the phantom. A 25mm spacer block was used to set the separation distance between the DUT and the phantom to 25mm. When applicable and unless by design, the antenna of the DUT was prevented from sagging away from the phantom. The spacer block was removed before testing.</p>
BODY Configuration	<p>Body-Worn and Audio Accessories were affixed to the DUT in the manner in which they are intended to be used. The DUT, with its accessories, were securely clamped into the device holder with the surface of the DUT normally in contact with the body in direct contact with the bottom of the phantom, or 0mm separation from the DUT's accessory to the phantom. Body-Worn Accessory straps, linkages, etc. were positioned in a fashion resembling that for which they were intended to be used. Audio Accessory cables, etc., were positioned in a fashion resembling that for which they were intended to be used.</p>
HEAD Configuration	<p>This device is not intended to be held to the ear and was not tested in the HEAD configuration.</p>

13.4 General Procedures and Report

General Procedures and Reporting	
General Procedures	<p>The fluid dielectric parameters of the Active Tissue Simulating Liquid (TSL) were measured as described in this Section, recorded and entered into the DASY Measurement Server. Active meaning the TSL used during the SAR evaluation of the DUT. The temperature of the Active TSL was measured and recorded prior to performing a System Performance Check (SPC). An SPC was performed with the Active TSL prior to the start of the test series. The temperature of the Active TSL was measured throughout the day and the Active TSL temperature was maintained to $\pm 0.5^{\circ}\text{C}$. The Active TSL temperature was maintained to within $\pm 2.0^{\circ}\text{C}$ throughout the test series. The liquid parameters shall be measured within 24 hours before the start of a test series and if it takes longer than 48 hours, the liquid parameters shall also be measured at the end of the test series.</p> <p>An Area Scan exceeding the length and width of the DUT projection was performed and the locations of all maximas within 2dB of the Peak SAR recorded. A Zoom Scan centered over the Peak SAR location(s) was performed and the 1g and 10g SAR values recorded. The resolutions of the Area Scan and Zoom Scan are described in the Scan Resolution table(s) in this Section. A Power Reference Measurement was taken at the phantom reference point immediately prior to the Area Scan. A Power Drift measurement was taken at the phantom reference point immediately following the Zoom Scan to determine the power drift. A Z-Scan from the <u>Maximum Distance to Phantom Surface</u> to the fluid surface was performed following the power drift measurement.</p>
Reporting	<p>The 1g SAR, 10g SAR and power drift measurements are recorded in the SAR Measurement Summary tables in the SAR Measurement Summary Section of this report. The SAR values shown in the 100% DC (Duty Cycle) column are the SAR values reported by the SAR Measurement Server with the DUT operating at 100% transmit duty cycle. These tables also include other information such as transmit channel and frequency, modulation, accessories tested and DUT-phantom separation distance.</p> <p>In the Scaling of Maximum Measured SAR Section of this report, the highest measured SAR in the BODY configuration, within the entire scope of this assessment, are, when applicable, scaled for Fluid Sensitivity, Manufacturer's Tune-Up Tolerance, Simultaneous Transmission and Drift. With the exception of Duty Cycle correction/compensation, SAR values are <u>ONLY</u> scaled up, not down. The final results of this scaling is the <u>reported SAR</u> which appears on the Cover Page of this report.</p>

13.5 Fluid Dielectric and Systems Performance Check

Fluid Dielectric and Systems Performance Check	
Fluid Dielectric Measurement Procedure	<p>The fluid dielectric parameters of the Tissue Simulating Liquid (TSL) are measured using the Open-Ended Coax Method connected to an Agilent 8753ET Network Analyzer connected to a measurement server running April Dielectric Property Measurement System. A frequency range of $\pm 100\text{MHz}$ for frequencies $> 300\text{MHz}$ and $\pm 50\text{MHz}$ for frequencies $\leq 300\text{MHz}$ with frequency step size of 10MHz is used. The center frequency is centered around the SAR measurement probe's calibration point for that TSL frequency range. A calibration of the setup is performed using a short-open-deionized water (at 23°C in a 300ml beaker) method. A sample of the TSL is placed in a 300ml beaker and the open-ended coax is submerged approximately 8mm below the fluid surface in the approximate center of the beaker. A check of the setup is made to ensure no air is trapped under the open-ended coax. The sample of TSL is measured and compared to the FCC KDB 865664 targets for HEAD or BODY for the entire fluid measurement range. Fluid adjustment are made if the dielectric parameters are $> 5\%$ in range that the DUT is to be tested. If the adjustments fail to bring the parameters to $\leq 5\%$ but are $< 10\%$, the SAR Fluid Sensitivity as per IEC 62201-1 and FCC KDB 865664 are applied to the highest measured SAR. A TSL with dielectric parameters $> 10\%$ in the DUT test frequency range are not used.</p>
Systems Performance Check	<p>The fluid dielectric parameters of the Active TSL are entered into the DASY Measurement Server at each of the 10MHz step size intervals. Active meaning the TSL used during the SAR evaluation of the DUT. The DASY Measurement System will automatically interpolate the dielectric parameters for DUT test frequencies that fall between the 10MHz step intervals.</p> <p>A Systems Performance Check (SPC) is performed in accordance with IEEE 1528 "System Check" and FCC KDB 865664 "System Verification". A validation source, dipole or Confined Loop Antenna (CLA), is placed under the geometric center of the phantom and separated from the phantom in accordance to the validation source's Calibration Certificate data. A CW signal set to the frequency of the validate source's and SAR measurement probe's calibration frequency with a forward power set to the validation source's Calibration Certificate data power setting is applied to the validation source. An Area Scan is centered over the projection of the validation source's feed point and an Area Scan is taken. A Zoom Scan centered over the Peak SAR measurement of the Area Scan and the 1g and 10g SAR is measured. The measured 1g and 10g SAR is compared to the 1g and 10g SAR measurements from the validation source's Calibration Certificate. When required, the measured SAR is normalized to 1.0W and compared to the normalized SAR indicated on the validation source's Calibration Certificate. The SPC is considered valid when the measured and normalized SAR is $\leq 10\%$ of the measured and normalize SAR of the validation source's Calibration Certificate.</p> <p>The fluid dielectric parameters of the Active TSL and SPC are repeated when the Active TSL has been in use for greater than 84 hours or if the Active TSL temperature has exceed $\pm 1^{\circ}\text{C}$ of the initial fluid analysis.</p>

13.6 Scan Resolution 100MHz to 2GHz

Scan Resolution 100MHz to 2GHz	
Maximum distance from the closest measurement point to phantom surface: (Geometric Center of Probe Center)	$4 \pm 1 \text{ mm}$
Maximum probe angle normal to phantom surface. (Flat Section ELI Phantom)	$5^{\circ} \pm 1^{\circ}$
Area Scan Spatial Resolution $\Delta X, \Delta Y$	15 mm
Zoom Scan Spatial Resolution $\Delta X, \Delta Y$	7.5 mm
Zoom Scan Spatial Resolution ΔZ (Uniform Grid)	5 mm
Zoom Scan Volume X, Y, Z	30 mm
Phantom	ELI
Fluid Depth	$150 \pm 5 \text{ mm}$
An Area Scan with an area extending beyond the device was used to locate the candidate maximas within 2dB of the global maxima.	
A Zoom Scan centered over the peak SAR location(s) determined by the Area Scan was used to determine the 1-gram and 10-gram peak spatial-average SAR	

13.7 Scan Resolution 2GHz to 3GHz

Scan Resolution 2GHz to 3GHz	
Maximum distance from the closest measurement point to phantom surface: (Geometric Center of Probe Center)	4 ± 1 mm
Maximum probe angle normal to phantom surface. (Flat Section ELI Phantom)	5° ± 1°
Area Scan Spatial Resolution $\Delta X, \Delta Y$	12 mm
Zoom Scan Spatial Resolution $\Delta X, \Delta Y$	5 mm
Zoom Scan Spatial Resolution ΔZ (Uniform Grid)	5 mm
Zoom Scan Volume X, Y, Z	30 mm
Phantom	ELI
Fluid Depth	150 ± 5 mm
An Area Scan with an area extending beyond the device was used to locate the candidate maximas within 2dB of the global maxima.	
A Zoom Scan centered over the peak SAR location(s) determined by the Area Scan was used to determine the 1-gram and 10-gram peak spatial-average SAR	

13.8 Scan Resolution 5GHz to 6GHz

Scan Resolution 5GHz to 6GHz	
Maximum distance from the closest measurement point to phantom surface: (Geometric Center of Probe Center)	4 ± 1 mm
Maximum probe angle normal to phantom surface. (Flat Section ELI Phantom)	5° ± 1°
Area Scan Spatial Resolution $\Delta X, \Delta Y$	10 mm
Zoom Scan Spatial Resolution $\Delta X, \Delta Y$	4 mm
Zoom Scan Spatial Resolution ΔZ (Uniform Grid)	2 mm
Zoom Scan Volume X, Y, Z	22 mm
Phantom	ELI
Fluid Depth	100 ± 5 mm
An Area Scan with an area extending beyond the device was used to locate the candidate maximas within 2dB of the global maxima.	
A Zoom Scan centered over the peak SAR location(s) determined by the Area Scan was used to determine the 1-gram and 10-gram peak spatial-average SAR	

14.0 MEASUREMENT UNCERTAINTIES

Table 14.1 Measurement Uncertainty

UNCERTAINTY BUDGET FOR DEVICE EVALUATION (IEEE 1528-2013 Table 9)									
Source of Uncertainty	IEEE 1528 Section	Toler ±%	Prob Dist	Div	c _i	c _i	Stand Unct ±%	Stand Unct ±%	V _i or V _{eff}
Measurement System					(1g)	(10g)	(1g)	(10g)	
EX3DV4 Probe Calibration** (k=1)	E.2.1	6.7	N	1	1	1	6.7	6.7	∞
Axial Isotropy** (k=1)	E.2.2	0.6	R	√3	0.7	0.7	0.2	0.2	∞
Hemispherical Isotropy** (k=1)	E.2.2	3.2	R	√3	0.7	0.7	1.3	1.3	∞
Boundary Effect*	E.2.3	1.0	R	√3	1	1	0.6	0.6	∞
Linearity** (k=1)	E.2.4	0.5	R	√3	1	1	0.3	0.3	∞
System Detection Limits*	E.2.4	1.0	R	√3	1	1	0.6	0.6	∞
Modulation Response** (k=1)	E.2.5	8.3	R	√3	1	1	4.8	4.8	∞
Readout Electronics*	E.2.6	0.3	N	1	1	1	0.3	0.3	∞
Response Time*	E.2.7	0.8	R	√3	1	1	0.5	0.5	∞
Integration Time*	E.2.8	2.6	R	√3	1	1	1.5	1.5	∞
RF Ambient Conditions - Noise	E.6.1	0.0	R	√3	1	1	0.0	0.0	10
RF Ambient Conditions - Reflection	E.6.1	0.0	R	√3	1	1	0.0	0.0	10
Probe Positioner Mechanical Tolerance*	E.6.2	0.0	R	√3	1	1	0.0	0.0	∞
Probe Positioning wrt Phantom Shell*	E.6.3	0.4	R	√3	1	1	0.2	0.2	∞
Post-processing*	E.5	2.0	R	√3	1	1	1.2	1.2	∞
Test Sample Related									
Test Sample Positioning	E.4.2	2.2	N	1	1	1	2.2	2.2	5
Device Holder Uncertainty*	E.4.1	3.6	N	1	1	1	3.6	3.6	∞
SAR Drift Measurement ⁽²⁾	E.2.9	0.0	R	√3	1	1	0.0	0.0	∞
SAR Power Scaling ⁽³⁾	E.6.5	0.0	R	√3	1	1	0.0	0.0	∞
Phantom and Tissue Parameters									
Phantom Uncertainty*	E.3.1	6.1	R	√3	1	1	3.5	3.5	∞
SAR Correction Uncertainty	E.3.2	1.6	N	1	1	0.84	1.6	1.3	∞
Liquid Conductivity (measurement)	E.3.3	5.0	N	1	0.78	0.71	3.9	3.6	10
Liquid Permittivity (measurement)	E.3.3	5.0	N	1	0.23	0.26	1.2	1.3	10
Liquid Conductivity (Temperature)	E.3.2	0.4	R	√3	0.78	0.71	0.2	0.2	10
Liquid Permittivity Temperature	E.3.2	0.2	R	√3	0.23	0.26	0.0	0.0	10
Effective Degrees of Freedom⁽¹⁾								V_{eff} =	1141
Combined Standard Uncertainty			RSS				11.1	11.0	
Expanded Uncertainty (95% Confidence Interval)			k=2				22.2	21.9	
Measurement Uncertainty Table in accordance with IEEE Standard 1528-2003									

(1) The Effective Degrees of Freedom is > 30

Therefore a coverage factor of k=2 represents an approximate confidence level of 95%.

(2) The SAR Value is compensated for Drift

(3) SAR Power Scaling not Required

* Provided by SPEAG for DASY4

Table 14.2 Calculation of Degrees of Freedom

Calculation of the Degrees and Effective Degrees of Freedom	
$v_i = n - 1$	$v_{\text{eff}} = \frac{u_c^4}{m \sum_{i=1} \frac{c_i^4 u_i^4}{v_i}}$

15.0 FLUID DIELECTRIC PARAMETERS

Table 15.1 Fluid Dielectric Parameters 150MHz HEAD TSL

Aprel Laboratory
Test Result for UIM Dielectric Parameter
Fri 08/Nov/2021 16:48:30
Freq Frequency(GHz)
FCC_eHFCC OET 65 Supplement C (June 2001) Limits for Head Epsilon
FCC_sHFCC OET 65 Supplement C (June 2001) Limits for Head Sigma
Test_e Epsilon of UIM
Test_s Sigma of UIM

Freq	FCC_eHFCC	sHFCC	Test_e	Test_s
0.1000	54.63	0.72	56.02	0.67
0.1100	54.17	0.73	53.84	0.68
0.1200	53.70	0.74	51.89	0.68
0.1300	53.23	0.75	53.32	0.67
0.1400	52.77	0.75	49.52	0.70
0.1500	52.30	0.76	51.54	0.70
0.1600	51.83	0.77	49.67	0.71
0.1700	51.37	0.77	49.27	0.71
0.1800	50.90	0.78	47.53	0.72
0.1900	50.43	0.79	48.23	0.74
0.2000	49.97	0.80	48.46	0.76

FLUID DIELECTRIC PARAMETERS							
Date:	8 Nov 2021	Fluid Temp:	21.7	Frequency:	150MHz	Tissue:	Head
Freq (MHz)	Test_e	Test_s	Target_e	Target_s	Deviation Permittivity	Deviation Conductivity	
100.0000	56.0200	0.6700	54.6300	0.72	2.54%	-6.94%	
110.0000	53.8400	0.6800	54.1700	0.73	-0.61%	-6.85%	
120.0000	51.8900	0.6800	53.7000	0.74	-3.37%	-8.11%	
130.0000	53.3200	0.6700	53.2300	0.75	0.17%	-10.67%	
140.0000	49.5200	0.7000	52.7700	0.75	-6.16%	-6.67%	
150.0000	51.5400	0.7000	52.3000	0.76	-1.45%	-7.89%	
156.0500	50.4087	0.7061	52.0157	0.7661	-3.09%	-7.83%	
156.1500	50.3900	0.7062	52.0110	0.7662	-3.12%	-7.83%	
156.7250	50.2824	0.7067	51.9839	0.7667	-3.27%	-7.83%	
157.4250	50.1515	0.7074	51.9510	0.7674	-3.46%	-7.82%	
160.0000	49.6700	0.7100	51.8300	0.77	-4.17%	-7.79%	
170.0000	49.2700	0.7100	51.3700	0.77	-4.09%	-7.79%	
180.0000	47.5300	0.7200	50.9000	0.78	-6.62%	-7.69%	
190.0000	48.2300	0.7400	50.4300	0.79	-4.36%	-6.33%	
200.0000	48.4600	0.7600	49.9700	0.80	-3.02%	-5.00%	

*Channel Frequency Tested

16.0 SYSTEM VERIFICATION TEST RESULTS

Table 16.1 System Verification Results 150MHz HEAD TSL

System Verification Test Results					
Date		Frequency (MHz)	Validation Source		
			P/N	S/N	
08 Nov 2021		150	CLA-150	4007	
Fluid Type	Fluid Temp °C	Ambient Temp °C	Ambient Humidity (%)	Forward Power (mW)	Source Spacing (mm)
Head	21.7	24	22%	1000	0
Fluid Parameters					
Permittivity			Conductivity		
Measured	Target	Deviation	Measured	Target	Deviation
51.54	52.30	-1.45%	0.70	0.76	-7.89%
Measured SAR					
1 gram			10 gram		
Measured	Target	Deviation	Measured	Target	Deviation
3.64	3.89	-6.43%	2.41	2.57	-6.23%
Measured SAR Normalized to 1.0W					
1 gram			10 gram		
Normalized	Target	Deviation	Normalized	Target	Deviation
3.64	3.87	-5.94%	2.41	2.56	-5.86%
<p>Prior to the SAR evaluations, system checks were performed on the planar section of the phantom and a SPEAG validation dipole in accordance with the procedures described in IEEE 1528-2013, FCC KDB 846224 and IEC 62209-1.</p> <p>The dielectric parameters of the simulated tissue mixture were measured prior to the system performance check using a Dielectric Probe Kit and a Network Analyzer.</p> <p>The forward power was applied to the dipole and the system was verified to a tolerance of +10% from the system manufacturer's dipole calibration target SAR value.</p> <p>The forward power applied was same forward power applied by the calibration lab during the calibration of this validation source.</p>					

17.0 SYSTEM VALIDATION SUMMARY




Table 17.1 System Validation Summary

System Validation Summary											
Frequency (MHz)	Validation Date	Probe Model	Probe S/N	Validation Source	Source S/N	Tissue	Tissue Dielectrics		Validation Results		
							Permittivity	Conductivity	Sensitivity	Linearity	Isotropy
30	31-May-19	EX3DV4	3600	CLA-30	1005	Head	52.40	0.75	Pass	Pass	Pass
150	6-Nov-21	EX3DV4	3600	CLA-150	4007	Head	52.59	0.76	Pass	Pass	Pass
450	12-Aug-20	EX3DV4	3600	D450V3	1068	Head	43.64	0.84	Pass	Pass	Pass
750	20-Jun-19	EX3DV4	3600	D750V3	1061	Head	44.27	0.83	Pass	Pass	Pass
835	17-Aug-20	EX3DV4	3600	D835V2	4d075	Head	40.60	0.87	Pass	Pass	Pass
900	20-Aug-20	EX3DV4	3600	D900V2	045	Head	39.09	0.94	Pass	Pass	Pass
1640	5-Jul-18	EX3DV4	3600	1620-S-2	207-00102	Head	39.87	1.27	Pass	Pass	Pass
1800	18-Jun-19	EX3DV4	3600	D1800V2	247	Head	54.77	1.53	Pass	Pass	Pass
2450	29-Jun-21	EX3DV4	3600	D2450V2	825	Head	38.53	1.85	Pass	Pass	Pass
5250	25-May-21	EX3DV4	3600	D5GHzV2	1031	Head	33.74	4.9	Pass	Pass	Pass
5750	28-May-21	EX3DV4	3600	D5GHzV2	1031	Head	34.99	5.10	Pass	Pass	Pass

18.0 MEASUREMENT SYSTEM SPECIFICATIONS

Table 18.1 Measurement System Specifications

Measurement System Specification	
Specifications	
Positioner	Stäubli Unimation Corp. Robot Model: TX90XL
Repeatability	+/- 0.035 mm
No. of axis	6.0
Data Acquisition Electronic (DAE) System	
Cell Controller	
Processor	Intel(R) Core(TM) i7-7700
Clock Speed	3.60 GHz
Operating System	Windows 10 Professional
Data Converter	
Features	Signal Amplifier, multiplexer, A/D converter, and control logic
Software	Measurement Software: DASY6, V 6.4.0.12171 / DASY52 V52.10.0.1446
	Postprocessing Software: SEMCAD X, V14.6.10(Deployment Build)
Connecting Lines	Optical downlink for data and status info., Optical uplink for commands and clock
DASY Measurement Server	
Function	Real-time data evaluation for field measurements and surface detection
Hardware	Intel ULV Celeron CPU 400 MHz; 128 MB chip disk; 128 MB RAM
Connections	COM1, COM2, DAE, Robot, Ethernet, Service Interface
E-Field Probe	
Model	EX3DV4
Serial No.	3600
Construction	Triangular core fiber optic detection system
Frequency	10 MHz to 6 GHz
Linearity	±0.2 dB (30 MHz to 3 GHz)
Phantom	
Type	ELI Elliptical Planar Phantom
Shell Material	Fiberglass
Thickness	2mm +/- .2mm
Volume	> 30 Liter

Measurement System Specification		
Probe Specification		
Construction:	Symmetrical design with triangular core; Built-in shielding against static charges PEEK enclosure material (resistant to organic solvents, glycol)	
Calibration:	In air from 10 MHz to 2.5 GHz In head simulating tissue at frequencies of 900 MHz and 1.8 GHz (accuracy $\pm 8\%$)	
Frequency:	10 MHz to > 6 GHz; Linearity: ± 0.2 dB (30 MHz to 3 GHz)	
Directivity:	± 0.2 dB in head tissue (rotation around probe axis) ± 0.4 dB in head tissue (rotation normal to probe axis)	
Dynamic Range:	5 μ W/g to > 100 mW/g; Linearity: ± 0.2 dB	
Surface Detect:	± 0.2 mm repeatability in air and clear liquids over diffuse reflecting surfaces	
Dimensions:	Overall length: 330 mm; Tip length: 16 mm; Body diameter: 12 mm; Tip diameter: 6.8 mm Distance from probe tip to dipole centers: 2.7 mm	
Application:	General dosimetry up to 3 GHz; Compliance tests of mobile phone	EX3DV4 E-Field Probe
Phantom Specification		
<p>The ELI V5.0 phantom is an elliptical planar fiberglass shell phantom with a shell thickness of 2.0mm +/- .2mm at the planar area. This phantom conforms to OET Bulletin 65, Supplement C, IEEE 1528-2013, IEC 62209-1 and IEC 62209-2.</p>		
		ELI Phantom
Device Positioner Specification		
<p>The DASY device positioner has two scales for device rotation (with respect to the body axis) and the device inclination (with respect to the line between the ear openings). The plane between the ear openings and the mouth tip has a rotation angle of 65°. The bottom plate contains three pair of bolts for locking the device holder. The device holder positions are adjusted to the standard measurement positions in the three sections.</p>		
		Device Positioner

19.0 TEST EQUIPMENT LIST

Table 19.1 Equipment List and Calibration

Test Equipment List				
DESCRIPTION	ASSET NO.	SERIAL NO.	DATE CALIBRATED	CALIBRATION DUE
Schmid & Partner DASY 6 System	-	-	-	-
-DASY Measurement Server	00158	1078	CNR	CNR
-Robot	00046	599396-01	CNR	CNR
-DAE4	00019	353	22-Apr-21	22-Apr-22
-EX3DV4 E-Field Probe	00213	3600	20-Apr-21	20-Apr-22
-CLA 30 Validation Dipole	00300	1005	18-Mar-20	18-Mar-23
-CLA150 Validation Dipole	00251	4007	18-Mar-20	18-Mar-23
-D450V3 Validation Dipole	00221	1068	27-Apr-21	27-Apr-24
-D750V3 Validation Dipole	00238	1061	21-Mar-19	21-Mar-22
-D835V2 Validation Dipole	00217	4D075	27-Apr-21	27-Apr-24
-D900V2 Validation Dipole	00020	54	16-Mar-20	16-Mar-23
ALS-D-01640-S-2	00299	207-00102	15-Dec-20	15-Dec-23
-D1800V2 Validation Dipole	00222	247	16-Mar-20	16-Mar-23
-D1900V2 Validation Dipole	00218	5d107	16-Mar-20	16-Mar-23
ALS-D-2300-S-2	00328	218-00201	26-Feb-19	26-Feb-22
-D2450V2 Validation Dipole	00219	825	24-Apr-21	24-Apr-24
ALS-D-2600-S-2	00327	225-00926	26-Feb-19	26-Feb-22
-D5GHzV2 Validation Dipole	00126	1031	27-Apr-21	27-Apr-24
ELI Phantom	00247	1234	CNR	CNR
SAM Phantom	00154	1033	CNR	CNR
HP 85070C Dielectric Probe Kit	00033	none	CNR	CNR
Gigatronics 8652A Power Meter	00007	1835801	26-Mar-19	26-Mar-22
Gigatronics 80701A Power Sensor	00186	1837002	COU	COU
Gigatronics 80334A Power Sensor	00237	1837001	26-Mar-19	26-Mar-22
HP 8753ET Network Analyzer	00134	US39170292	6-Jan-21	6-Jan-24
Rohde & Schwarz SMR20 Signal Generator	00006	100104	11-Aug-20	11-Aug-23
Amplifier Research 10W1000C Power Amplifier	00041	27887	CNR	CNR
Amplifier Research 5S1G4 Power Amplifier	00106	26235	CNR	CNR
Narda Directional Coupler 3020A	00064	-	CNR	CNR
Kangaroo VWR Humidity/Thermometer	00334	192385455	5-Aug-19	6-Aug-22
Digital Multi Meter DMR-1800	00250	TE182	23-Jun-20	23-Jun-23
Bipolar Power Supply 6299A	00086	1144A02155	CNR	CNR
DC-18G 10W 30db Attenuator	00102	-	COU	COU
R&S FSP40 Spectrum Analyzer	00241	100500	9-Aug-21	9-Aug-24
HP 8566B Spectrum Analyzer	00051	2747A055100	29-Jun-20	29-Jun-23
RF Cable-SMA	00311	-	CNR	CNR
HP Calibration Kit	00145	-	CNR	CNR

CNR = Calibration Not Required

COU = Calibrate on Use

20.0 FLUID COMPOSITION

Table 20.1 Fluid Composition 150MHz HEAD TSL

				150MHz Head
Tissue Simulating Liquid (TSL) Composition				
Component by Percent Weight				
Water	Sugar	Salt ⁽¹⁾	HEC ⁽²⁾	Bacteriacide ⁽³⁾
38.35	55.5	5.15	0.9	0.1

(1) Non-Iodinized

(2) **H**ydroxy**E**thyl-**C**ellulose: Sigma-Aldrich P/N 54290-500g

(3) Dow Chemical Dowicil 75 Antimicrobial Perservative

Note: 150MHz HEAD TSL formulation was used during this evaluation.

APPENDIX A – SYSTEM VERIFICATION PLOTS

DUT: CLA-150; Type: CLA-150; Serial: 4007

Procedure Name: SPC 150H Input=1.0W, Target[3.5][3.89][4.3]W/kg 2 2 2

Communication System: UID 0, CW (0); Frequency: 150 MHz; Duty Cycle: 1:1
Medium parameters used: $f = 150$ MHz; $\sigma = 0.7$ S/m; $\epsilon_r = 51.54$; $\rho = 1000$ kg/m³
Phantom section: Flat Section

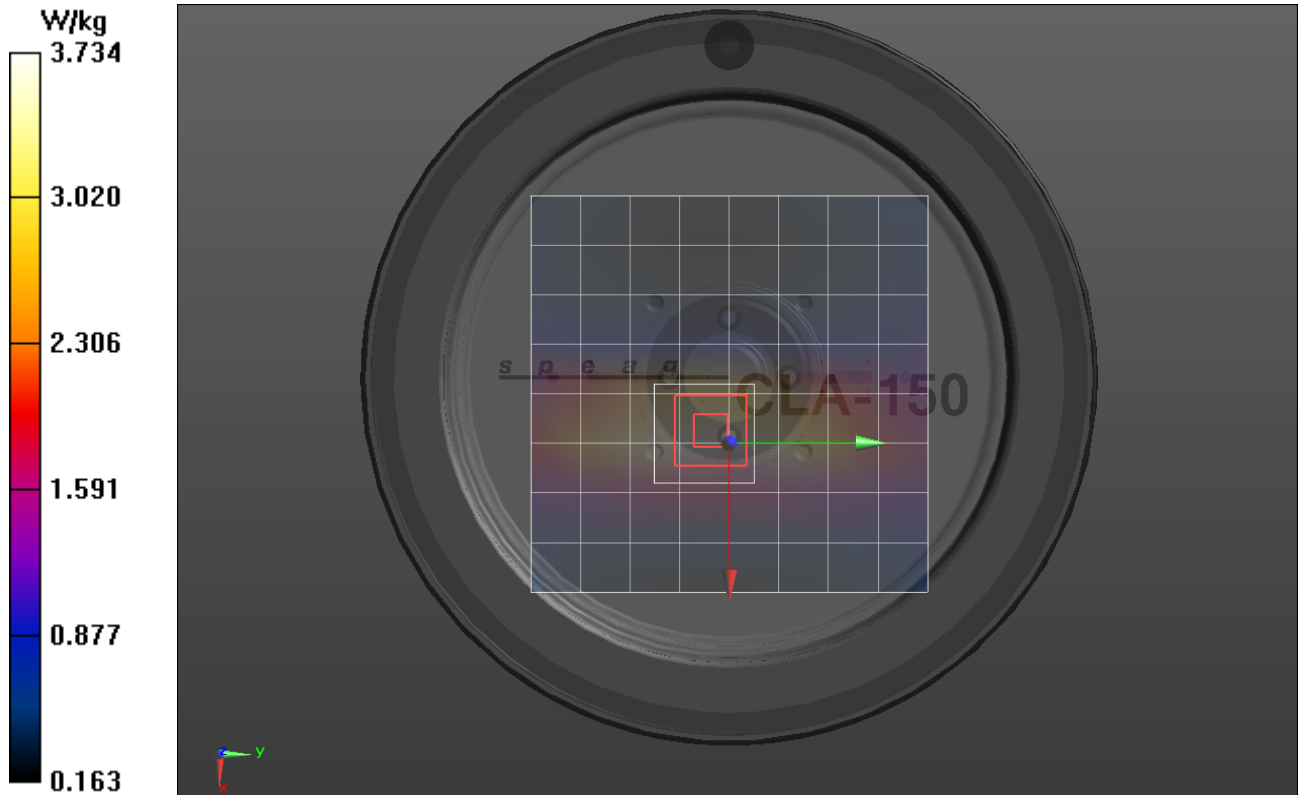
Date/Time: 11/8/2021 11:08:31 AM

DASY5 Configuration:

- Probe: EX3DV4 - SN3600; ConvF(9.45, 9.45, 9.45) @ 150 MHz; Calibrated: 4/28/2021
- Sensor-Surface: 4mm (Mechanical Surface Detection)
- Electronics: DAE4 Sn353; Calibrated: 4/22/2021
- Phantom: ELI V5.0 (20deg probe tilt); Type: QD OVA 002 Ax; Serial: 1234
- Measurement SW: DASY52, Version 52.10 (3); SEMCAD X Version 14.6.13 (7474)

SPC/SPC 150H Input=1.0W, Target[3.5][3.89][4.3]W/kg 2 2 2/Area Scan (9x9x1): Measurement grid: dx=15mm, dy=15mm
Maximum value of SAR (measured) = 3.73 W/kg

SPC/SPC 150H Input=1.0W, Target[3.5][3.89][4.3]W/kg 2 2 2/Zoom Scan (5x5x7)/Cube 0: Measurement grid: dx=7.5mm, dy=7.5mm, dz=5mm
Reference Value = 73.56 V/m; Power Drift = -0.06 dB
Peak SAR (extrapolated) = 5.60 W/kg
SAR(1 g) = 3.64 W/kg; SAR(10 g) = 2.41 W/kg
Ratio of SAR at M2 to SAR at M1 = 67.6%
Maximum value of SAR (measured) = 3.91 W/kg



APPENDIX B – MEASUREMENT PLOTS OF MAXIMUM MEASURED SAR

Plot B3

DUT: MHS75 - UT664ZV; Type: Sample; Serial: IMEI Number
Procedure Name: B3-UT664ZV, Body Config- Back Side (Belt Clip), Pwr 6W,157.425MHz

Communication System: UID 0, FM (0); Frequency: 157.425 MHz; Duty Cycle: 1:1
Medium parameters used (interpolated): $f = 157.425$ MHz; $\sigma = 0.707$ S/m; $\epsilon_r = 50.152$; $\rho = 1000$ kg/m³
Phantom section: Flat Section

Date/Time: 11/9/2021 5:18:34 PM

DASY5 Configuration:

- Probe: EX3DV4 - SN3600; ConvF(9.45, 9.45, 9.45) @ 157.425 MHz; Calibrated: 4/28/2021
- Sensor-Surface: 1.4mm (Mechanical Surface Detection (Locations From Previous Scan Used)), Sensor-Surface: 4mm (Mechanical Surface Detection)
- Electronics: DAE4 Sn353; Calibrated: 4/22/2021
- Phantom: ELI V5.0 (20deg probe tilt); Type: QD OVA 002 Ax; Serial: 1234
- Measurement SW: DASY52, Version 52.10 (3); SEMCAD X Version 14.6.13 (7474)

150B/B3-UT664ZV, Body Config- Back Side (Belt Clip), Pwr 6W,157.425MHz/Area Scan (8x18x1): Measurement grid: dx=15mm, dy=15mm

[Info: Interpolated medium parameters used for SAR evaluation.](#)

Maximum value of SAR (measured) = 2.63 W/kg

150B/B3-UT664ZV, Body Config- Back Side (Belt Clip), Pwr 6W,157.425MHz/Zoom Scan (5x5x7)/Cube 0:

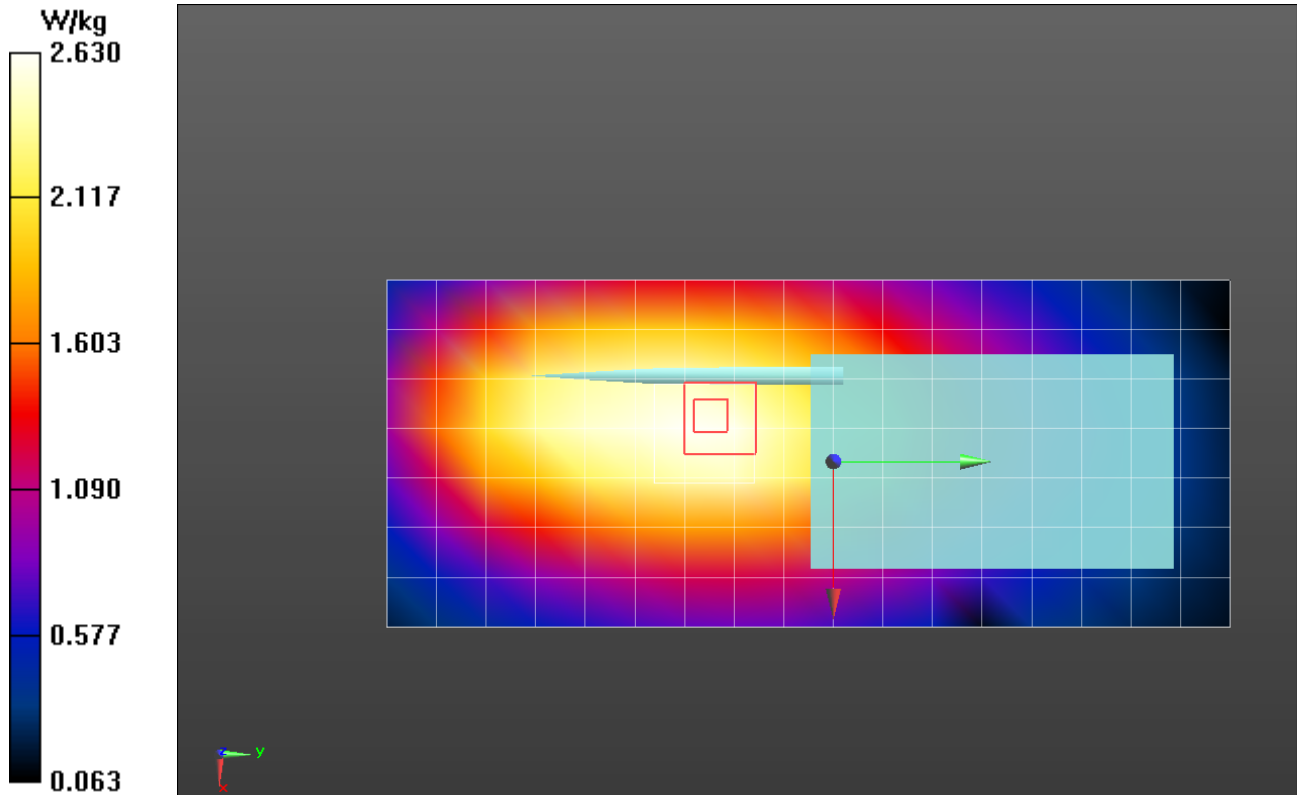
Measurement grid: dx=7.5mm, dy=7.5mm, dz=5mm
Reference Value = 50.06 V/m; Power Drift = -0.14 dB
Peak SAR (extrapolated) = 3.13 W/kg

SAR(1 g) = 2.38 W/kg; SAR(10 g) = 1.72 W/kg

Smallest distance from peaks to all points 3 dB below = 22.5 mm
Ratio of SAR at M2 to SAR at M1 = 78.7%

[Info: Interpolated medium parameters used for SAR evaluation.](#)

Maximum value of SAR (measured) = 2.44 W/kg



Plot F4

DUT: MHS75 - UT664ZV; Type: Sample; Serial: IMEI Number

Procedure Name: F4-UT664ZV, Face Config- Front Side(25mm), Pwr 6W,156.15MHz

Communication System: UID 0, FM (0); Frequency: 156.15 MHz; Duty Cycle: 1:1

Medium parameters used (interpolated): $f = 156.15$ MHz; $\sigma = 0.706$ S/m; $\epsilon_r = 50.39$; $\rho = 1000$ kg/m³

Phantom section: Flat Section

Date/Time: 11/9/2021 7:21:07 PM

DASY5 Configuration:

- Probe: EX3DV4 - SN3600; ConvF(9.45, 9.45, 9.45) @ 156.15 MHz; Calibrated: 4/28/2021
- Sensor-Surface: 1.4mm (Mechanical Surface Detection (Locations From Previous Scan Used)), Sensor-Surface: 4mm (Mechanical Surface Detection)
- Electronics: DAE4 Sn353; Calibrated: 4/22/2021
- Phantom: ELI V5.0 (20deg probe tilt); Type: QD OVA 002 Ax; Serial: 1234
- Measurement SW: DASY52, Version 52.10 (3); SEMCAD X Version 14.6.13 (7474)

150B/F4-UT664ZV, Face Config- Front Side(25mm), Pwr 6W,156.15MHz/Area Scan (8x18x1): Measurement grid: dx=15mm, dy=15mm

[Info: Interpolated medium parameters used for SAR evaluation.](#)

Maximum value of SAR (measured) = 2.65 W/kg

150B/F4-UT664ZV, Face Config- Front Side(25mm), Pwr 6W,156.15MHz/Zoom Scan (5x5x7)/Cube 0: Measurement grid: dx=7.5mm, dy=7.5mm, dz=5mm

Reference Value = 53.90 V/m; Power Drift = -0.26 dB

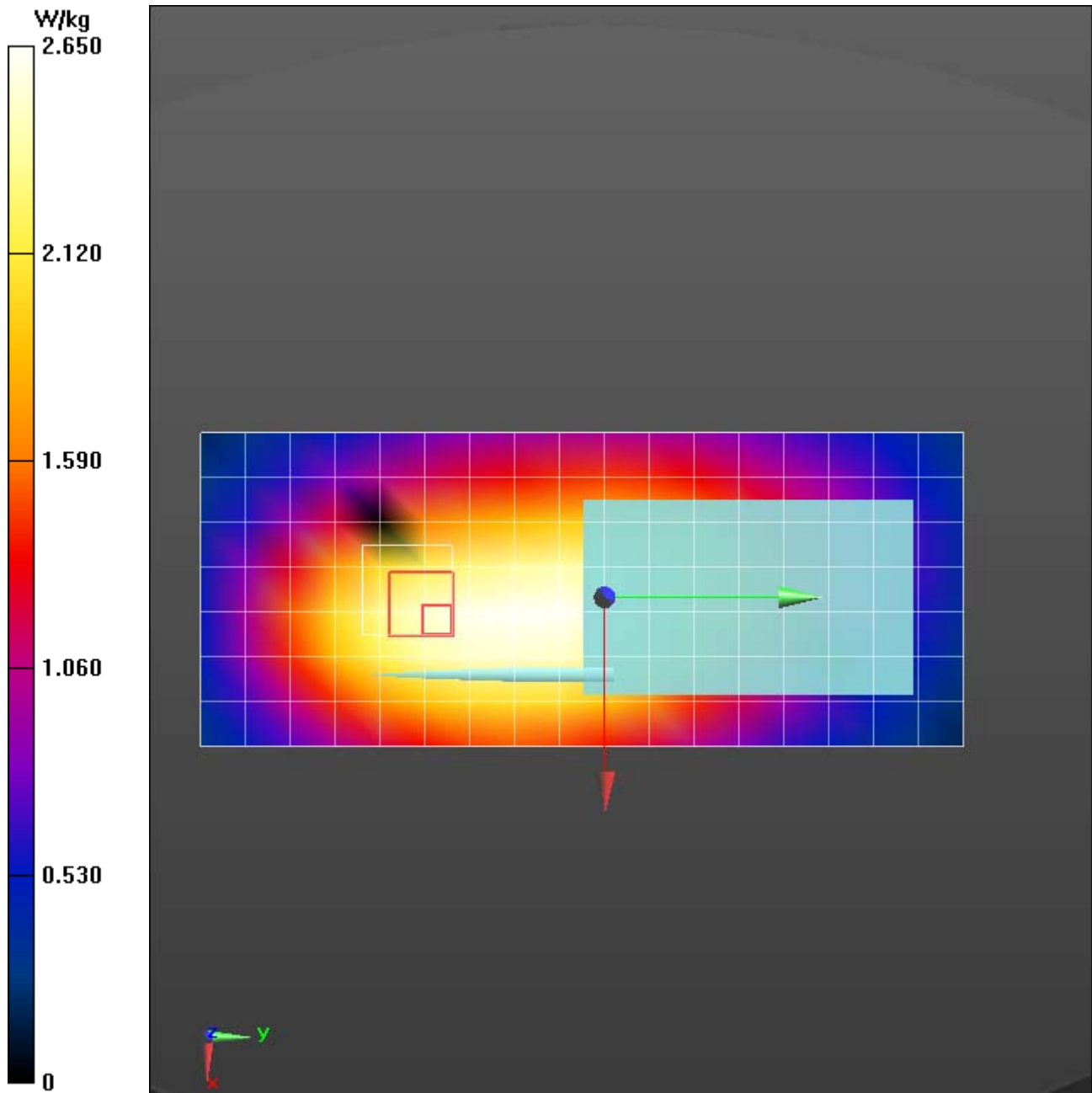
Peak SAR (extrapolated) = 2.42 W/kg

SAR(1 g) = 1.88 W/kg; SAR(10 g) = 1.42 W/kg

Ratio of SAR at M2 to SAR at M1 = 79.5%

[Info: Interpolated medium parameters used for SAR evaluation.](#)

Maximum value of SAR (measured) = 1.99 W/kg



APPENDIX C – PROBE CALIBRATION

APPENDIX D – DIPOLE CALIBRATION

APPENDIX E - PHANTOM