



8690i

RFID Mini Wearable Mobile Computer

Quick Start Guide

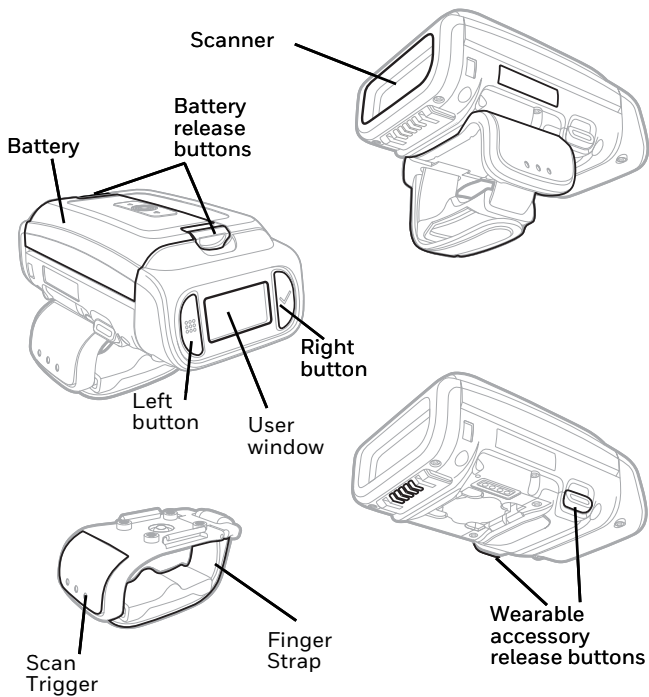
Out of the Box

Make sure that your shipping box contains these items:

- Honeywell 8690i Mini Wearable Mobile Computer
- Rechargeable battery
- Product Documentation

If you ordered accessories for your device, verify that they are also included with the order. Be sure to keep the original packaging in case you need to return the device for service.

Device Features



Charging the Battery

The 8690i mini wearable mobile computer ships with a partially charged battery. The battery must be fully charged before first use. The following charging stations are available for the device and must be purchased separately:

- MB4-BAT-SCN07
- MB4-SCN07
- MB4A-SCN07
- MB12-BAT-SCN07
- MB12-SCN07
- MB12A-SCN07



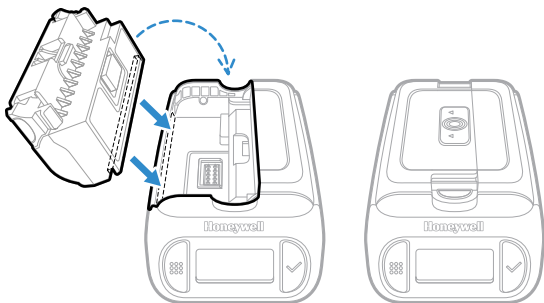
We recommend the use of Honeywell accessories and power adapters. Use of non-Honeywell accessories or power adapters may cause damage not covered by the warranty.



Ensure all components are dry prior to mating the computers and batteries with peripheral devices. Mating wet components may cause damage not covered by the warranty.

Install the Battery

The device ships with a 3.7V, 3400 mAh battery manufactured by Honeywell International Inc.

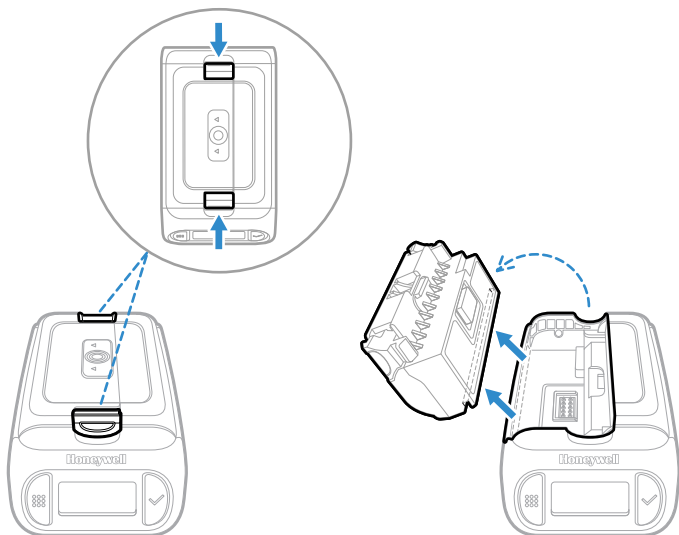


Use only Honeywell battery model BAT-SCN07.

Replace the Battery

Note: *The battery should be replaced in an environment free from excessive dust or particulate to avoid an internal buildup of dust in the unit.*

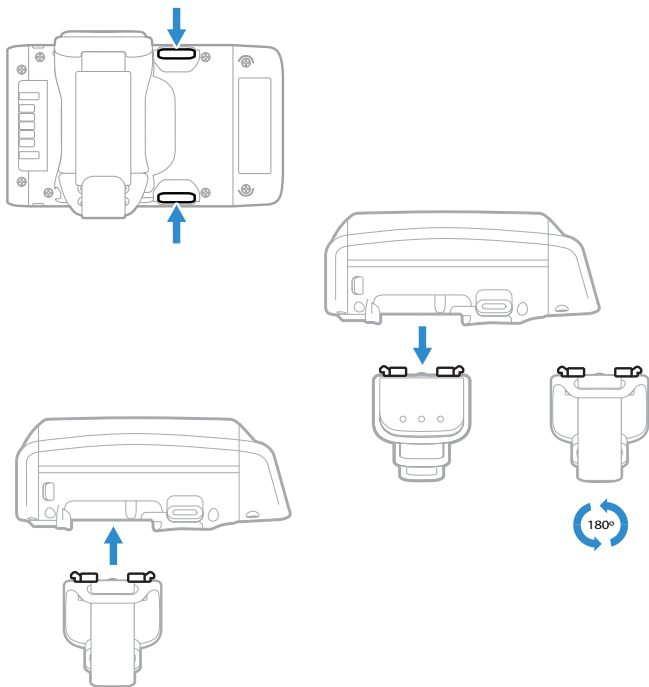
When the battery is low, the 8690i beeps and vibrates and the window shows a **Battery Low** warning. You can also press both the right and left buttons at any time to view the battery's charge status. To replace the battery, squeeze the battery latch and lift up on the battery.



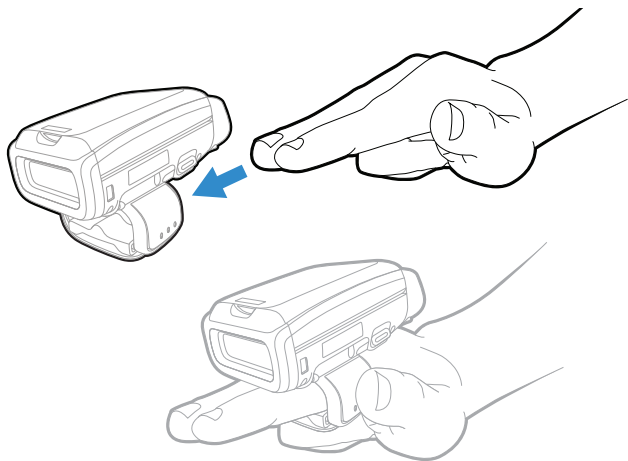
Replace the battery by aligning with the side of device and snapping it in to the device.

Right or Left Handed Operation

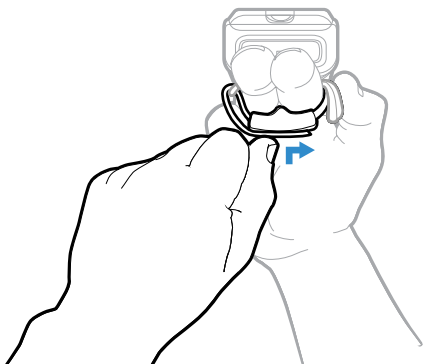
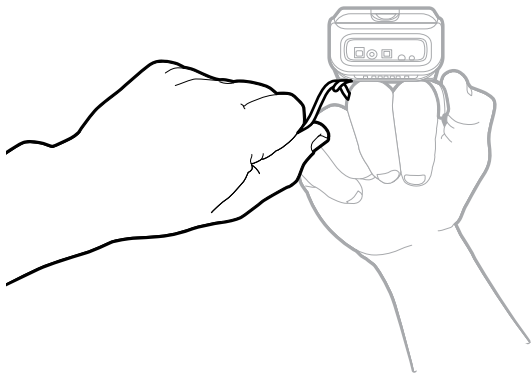
To release the finger trigger, turn over the device. Press the two release buttons on either side of the trigger. Rotate the trigger and snap it into place to change the operation to the correct hand.



Attach the Device to Your Fingers



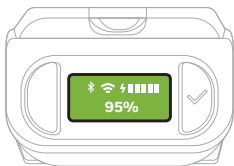
Pull the free end through the loop the press the excess down to secure the strap.



Power Up the Device

Press the trigger to power up the device. The battery, WiFi, and Bluetooth status appear in the window.

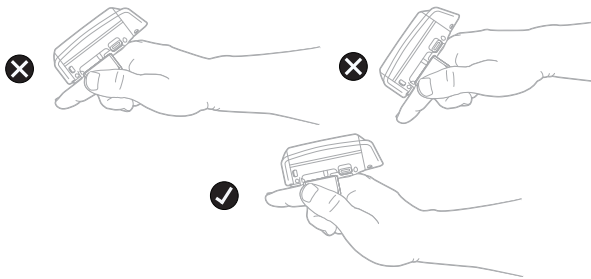
User Window



The user window displays prompts for using the device in your environment. The buttons to the left and right of the window are used to scroll through the windows or to enter responses to screen prompts.

- Press both the right and left buttons at the same time to view the WiFi, Bluetooth, and battery status.
- Press and hold the left button for 6 seconds to restart the device.

Wrist Position When Scanning



Warning: Do not stare directly into the laser beam.

How to Scan a Bar Code

The 8690i scanner has a view finder that projects a bright aiming pattern. This aiming pattern should be centered over the bar code, but it can be positioned in any direction for a good read.

Connect the Device via Bluetooth®

Pair with a PC or Laptop Bluetooth Serial Port: Host Reconnect Mode

The 8690i can pair with host Bluetooth devices such as personal computers, laptops, and tablets. In this mode, the host will continually attempt to connect with the device. If the device and the host become disconnected, the host will manage the reconnection.

1. Scan the **Host Reconnect Mode** bar code, below.



PAPSPP;BT_DNG1.

Host Reconnect Mode

2. Set your host device so it searches for other Bluetooth devices. (Refer to your host device's User's Guide for pairing instructions.)
3. When your host device has located the 8690i, you can select it from the list displayed.

Note: Refer to the 8690i User's Guide if your host device displays a PIN.

The Bluetooth symbol appears in the device window when the device pairs with a host.

Pair with a PC or Laptop Bluetooth: HID Keyboard Mode

In this mode, the 8690i pairs with a Bluetooth device using a HID keyboard.

1. Scan the **Bluetooth HID Keyboard Connect** bar code below.



Bluetooth HID Keyboard Connect

2. Set your host device so it searches for other Bluetooth devices. (Refer to your host device's User's Guide for pairing instructions.)
3. When your host device has located the 8690i, you can select it from the list displayed.

Note: Refer to the 8690i User's Guide if your host device displays a PIN.

The Bluetooth symbol appears in the device window when the device pairs with a host.

Disconnect from the Host

Once your device has been connected to a host, you must disconnect it in order to communicate with a different device. Scan the **Bluetooth Disconnect** bar code to unlink the device from the currently linked host.



BT_DNG4,ADR.

Bluetooth Disconnect

Pair with an Android™ Mobile Device

Tap and Pair

You can pair your Android™ phone with the 8690i by touching the devices together.

1. Make sure the NFC setting is **On** in your phone.
2. Touch the Android phone to the device.
3. The phone recognizes the device and prompts you to pair.
4. Verify the pairing of the 8690i in your phone's Bluetooth settings.

Pair with an Android, Apple™ or Windows® Mobile Device

The 8690i can pair with Android, Apple, and Windows mobile devices, excluding Windows CE and Mobile.

1. Set your mobile device so it searches for other Bluetooth devices. (Refer to your mobile device's User's Guide for pairing instructions.)
2. Scan the **Bluetooth HID Keyboard Connect** bar code below.



PAPBTH.

Bluetooth HID Keyboard Connect

3. On the mobile device, the 8690i device is shown as a keyboard. Click on it to pair.

The Bluetooth symbol appears in the device window when the device pairs with a mobile device.

Pair with a Honeywell Vehicle Mount Computer

The 8690i can pair with Honeywell vehicle mount computers, such as the Thor VM1 or VM2, or with Tecton mobile computers.

1. Scan the **Bluetooth HID Keyboard Disconnect** bar code below.



Bluetooth HID Keyboard Disconnect

2. Use the 8690i to scan the EZPairing bar code that is either supplied with the device, attached to the device, or displayed on the screen. The EZPairing bar code begins with {FNC3}LnkB, followed by 10 digits, like the sample below.



The Bluetooth symbol appears in the user window when the 8690i pairs with a host.

Reset Custom Defaults

If you want the custom default settings restored to your 8690i, scan the **Activate Custom Defaults** bar code below. This is the recommended default bar code for most users. It resets the 8690i to the custom default settings. If there are no custom defaults, it resets the 8690i to the factory default settings. Any settings that have not been specified through the custom defaults are defaulted to the factory default settings.



Activate Custom Defaults

Note: *Scanning the Defaults bar code also causes both the 8690i and the host to perform a reset and become unlinked. You must relink (pair) the 8690i to the host.*

Support

To search our knowledge base for a solution or to log into the Technical Support portal and report a problem, go to www.hsmcontactsupport.com.

User Documentation

For the user guide and other documentation, go to www.honeywellaidc.com.

Limited Warranty

For warranty information, go to www.honeywellaidc.com and click **Resources > Product Warranty**.

Patents

For patent information, see www.hsmpats.com.

Disclaimer

Honeywell International Inc. (“HII”) reserves the right to make changes in specifications and other information contained in this document without prior notice, and the reader should in all cases consult HII to determine whether any such changes have been made. The information in this publication does not represent a commitment on the part of HII.

HII shall not be liable for technical or editorial errors or omissions contained herein; nor for incidental or consequential damages resulting from the furnishing, performance, or use of

this material. HII disclaims all responsibility for the selection and use of software and/or hardware to achieve intended results.

This document contains proprietary information that is protected by copyright. All rights are reserved. No part of this document may be photocopied, reproduced, or translated into another language without the prior written consent of HII.

Copyright © 2020 Honeywell International Inc. All rights reserved.

Microsoft® Windows®, Windows NT®, Windows 2000, Windows ME, Windows XP, and the Windows logo are trademarks or registered trademarks of Microsoft Corporation.

The Bluetooth® word mark and logos are owned by Bluetooth SIG, Inc.

Android™ is a trademark of Google Inc.

Apple is a trademark of Apple Inc., registered in the U.S. and other countries.



8690i-ML-RS-01 Rev (a)

Preliminary Draft 10/23/20

Agency Model: 8690i

Table with 8 columns for product documentation availability in various languages: English, French, Italian, German, Spanish, Chinese, Hebrew, and Portuguese.

FCC Part 15 Subpart B Class B. This device complies with part 15 of the FCC Rules. Operation is subject to the following two conditions: 1. This device may not cause harmful interference. 2. This device must accept any interference received...

Table with 8 columns for FCC Part 15 Subpart B Class B compliance information in various languages.

Para su uso en México, la operación de este equipo está sujeta a las siguientes dos condiciones: 1. Es posible que este equipo o dispositivo no cause interferencia perjudicial. 2. Este equipo o dispositivo debe aceptar cualquier interferencia...

Table with 2 columns for Canadian Compliance and RF Radiation Exposure Statement in English.

RF Exposure. The equipment complies with FCC RF exposure limits set forth for an uncontrolled environment. The equipment must not be co-located or operating in conjunction with any other antenna or transmitter.

Table with 8 columns for technical specifications and safety warnings in various languages.

Table with 8 columns for CE mark compliance information in various languages.

Table with 8 columns for battery safety warnings in various languages.

Table with 8 columns for safety statements including LED Safety, CB Scheme, and other regulatory information in various languages.

Preliminary Draft 10/23/20

Table with 6 columns and 2 rows containing patent information in various languages (English, French, Spanish, German, Italian, Japanese).

Table with 6 columns and 2 rows containing safety statements and laser warnings in various languages (English, French, Spanish, German, Italian, Japanese).

Table with 6 columns and 2 rows containing safety notices and laser warnings in various languages (English, French, Spanish, German, Italian, Japanese).

Table with 6 columns and 2 rows containing environmental information in various languages (English, French, Spanish, German, Italian, Japanese).

Table with 6 columns and 2 rows containing technical specifications like TÜV R Statement, Normes TÜV R, and Operating Frequency Ranges.

Table with 6 columns and 2 rows containing hazardous substances information in various languages (English, French, Spanish, German, Italian, Japanese).

Table with 6 columns and 2 rows containing warranty and support information in various languages (English, French, Spanish, German, Italian, Japanese).