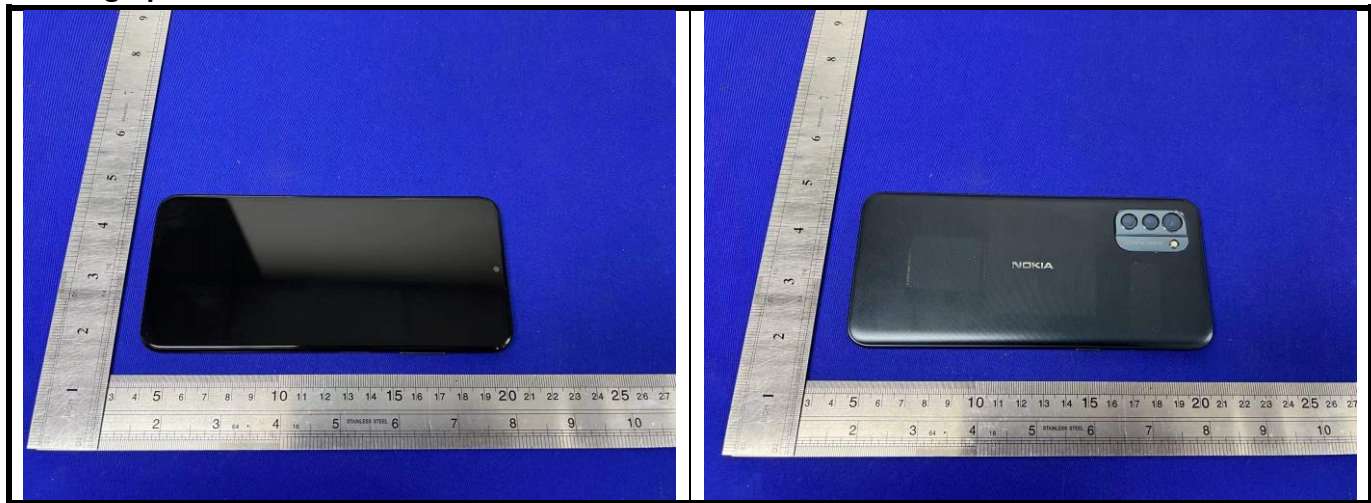
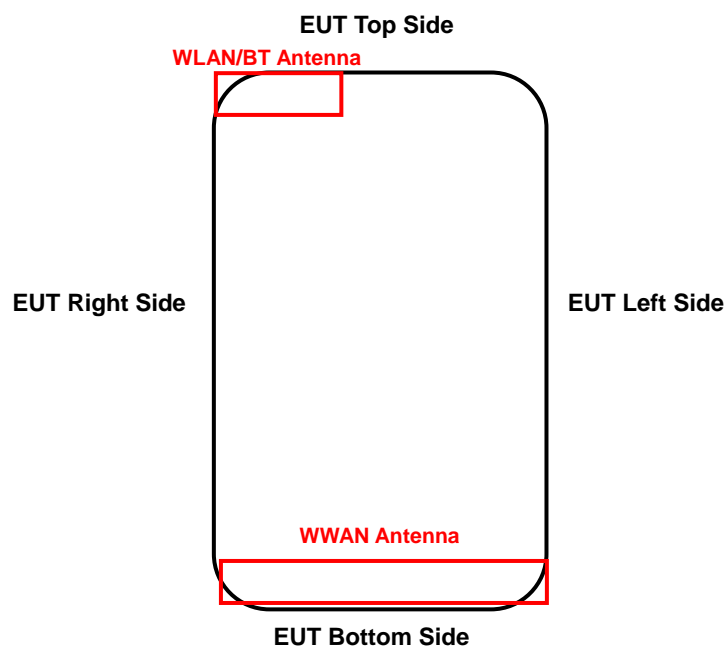


FCC SAR Test Report

<Photographs of EUT>



<Antenna Location>



<EUT Back View>

The separation distance for antenna to edge:

Antenna	Overall diagonal(mm)	Display diagonal(mm)	To Left Side (mm)	To Right Side (mm)	To Top Side (mm)	To Bottom Side (mm)
WWAN	174	162	0	0	154	0
WLAN/BT			50	0	0	152

FCC SAR Test Report

<Photographs of SAR Setup>



Right Cheek



Left Cheek



Right Tilted



Left Tilted

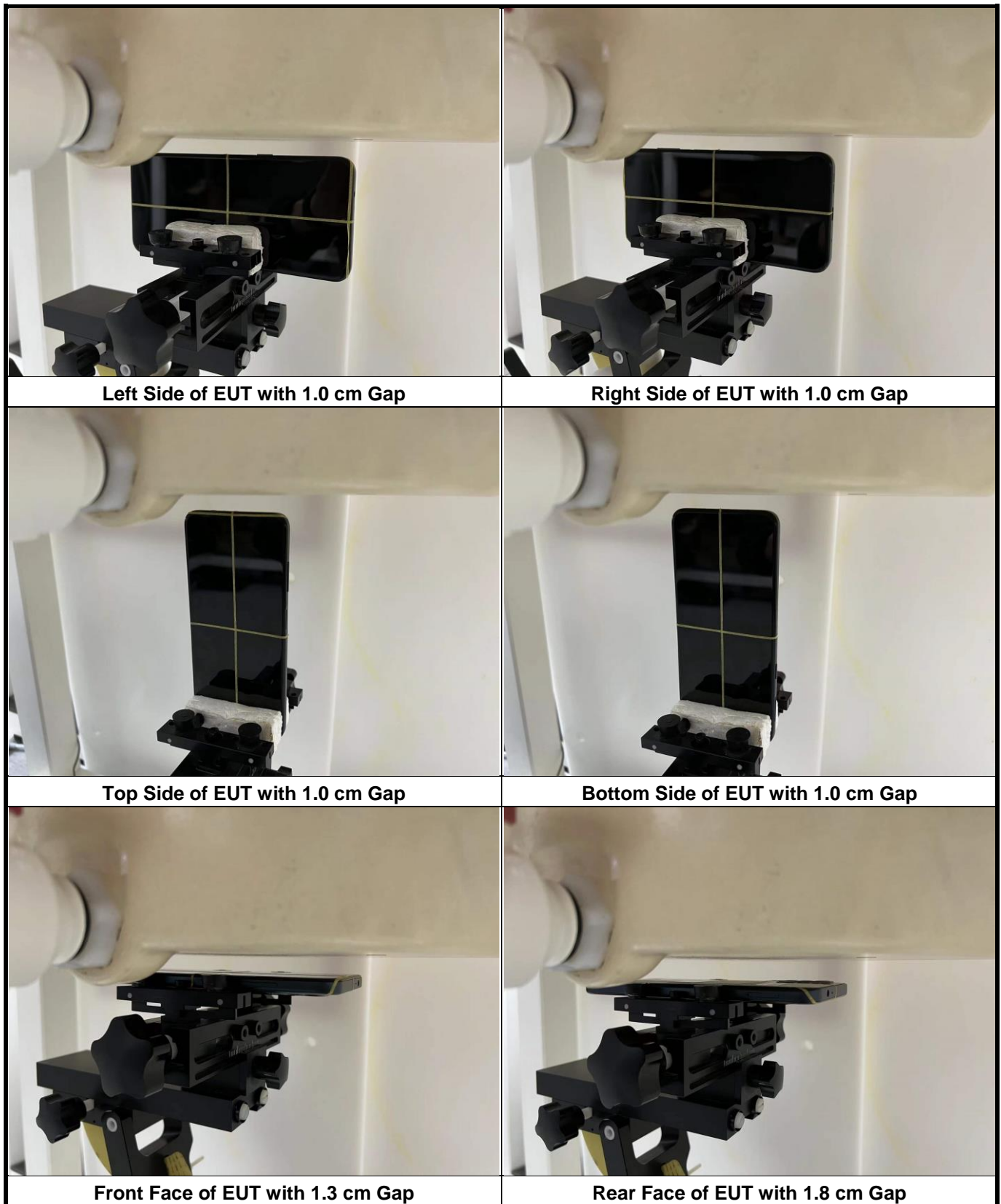


Front Face of EUT with 1.0 cm Gap



Rear Face of EUT with 1.0 cm Gap

FCC SAR Test Report



FCC SAR Test Report

