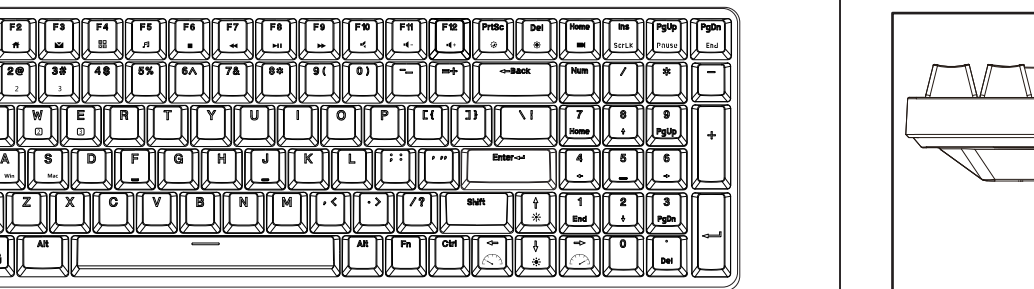




RK71

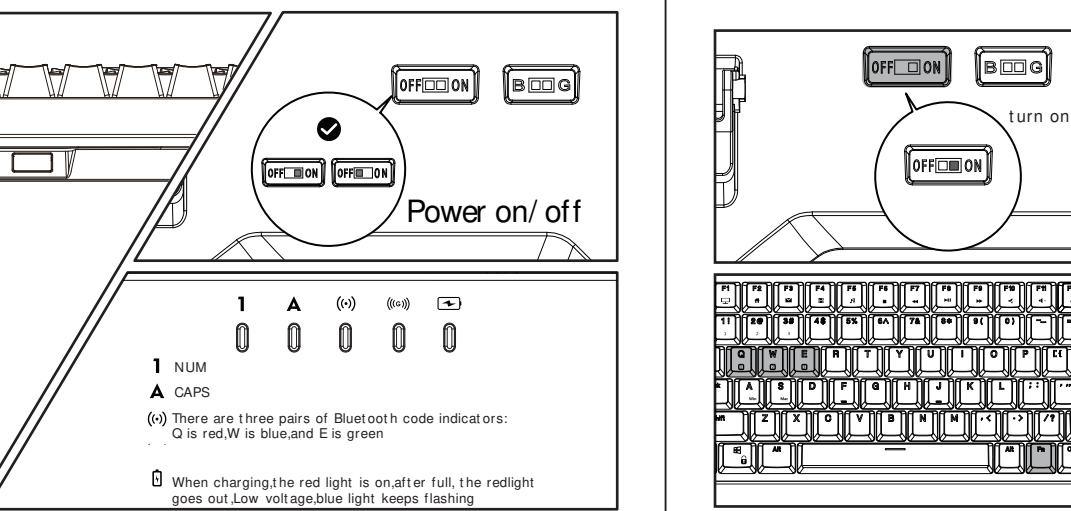
Mechanical keyboard user manual

## Product base

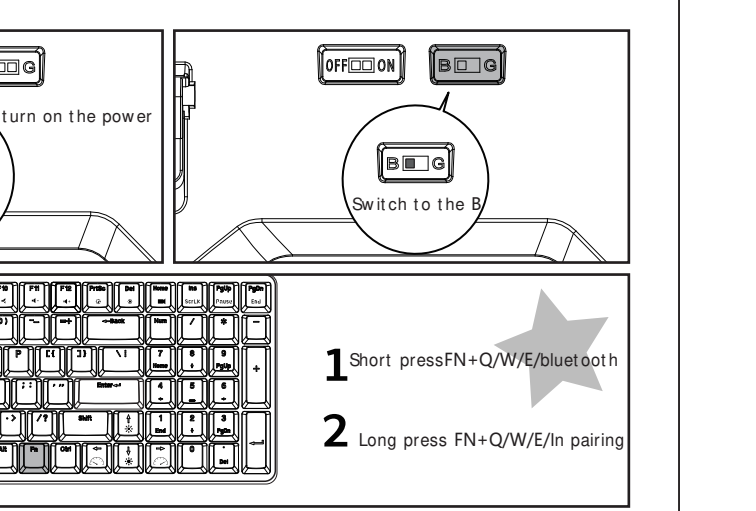


keyboard

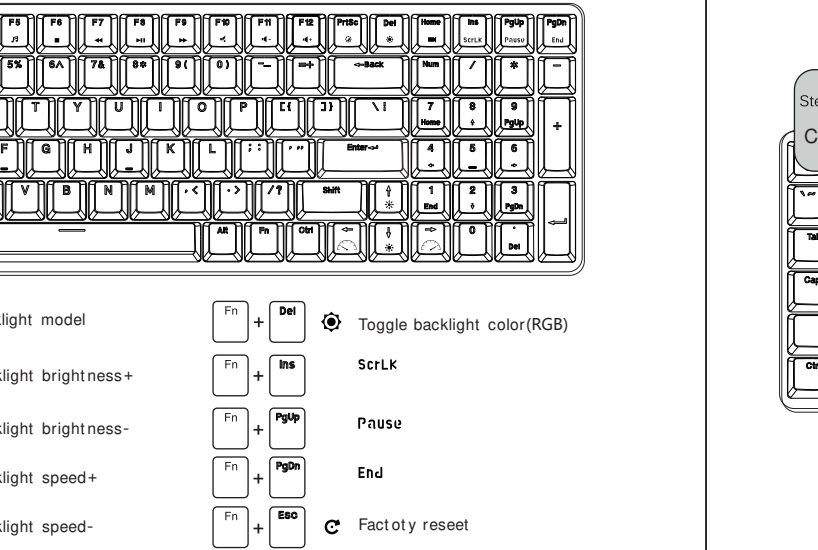
## Wired mode and charging



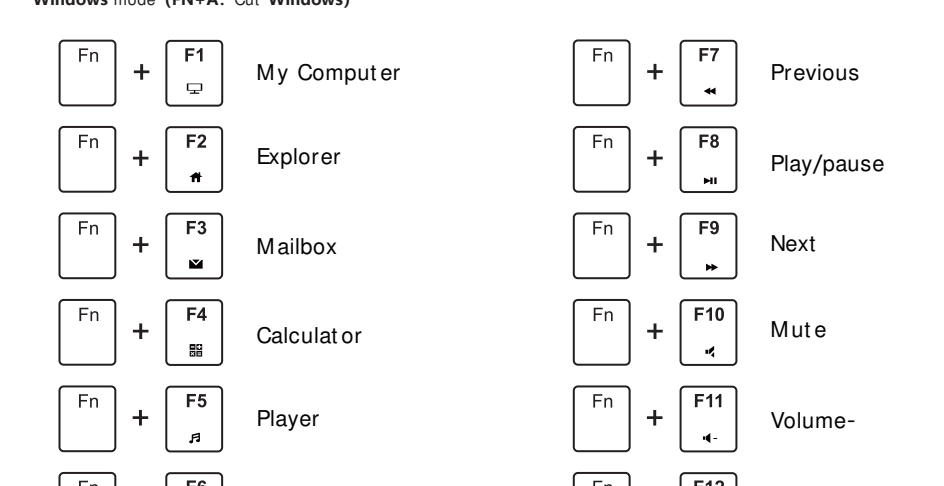
## bluetooth connection



## Backlight contrl



## Backlight control method



## WINDOWS Multimedia key

Windows mode (FN+A: Cut Windows)

Fn + F1	My Computer	Fn + F7	Previous
Fn + F2	Explorer	Fn + F8	Play/pause
Fn + F3	Mailbox	Fn + F9	Next
Fn + F4	Calculator	Fn + F10	Mute
Fn + F5	Player	Fn + F11	Volume-
Fn + F6	停止	Fn + F12	Volume+

## MAC Multimedia eky

MAC OS (FN+s: CUT MAC OS) MAC OS AND ALT Key seap

Fn + F7	Previous	Fn + F10	Mute
Fn + F8	Play/pause	Fn + F11	Volume-
Fn + F9	Mute	Fn + F12	Volume+

## System requirement

Bluetooth mode

- bluetooth3.0,bluetooth5.1 or a later version of the device
- PC:Windows 7 or higher
- Mac:macos X 10.6 Snow Leopard or higher
- ios: iPad/iphone 5 or higher
- Android:5.0 or higher

This device complies with Part 15 of the FCC Rules. Operation is subject to the following two conditions: (1) this device may not cause harmful interference, and (2) this device must accept any interference received, including interference that may cause undesired operation

NOTE: This equipment has been tested and found to comply with the limits for a Class B digital device, pursuant to Part 15 of the FCC Rules. These limits are designed to provide reasonable protection against harmful interference in a residential installation. This equipment generates, uses and can radiate radio frequency energy and, if not installed and used in accordance with the instructions, may cause harmful interference to radio communications. However, there is no guarantee that

interference will not occur in a particular installation.

If this equipment does cause harmful interference to radio or television reception, which can be determined by turning the equipment off and on, the user is encouraged to try to correct the interference by one or more of the following measures:

- Reorient or relocate the receiving antenna.
- Increase the separation between the equipment and receiver.
- Connect the equipment into an outlet on a circuit different from that to which the receiver is connected.
- Consult the dealer or an experienced radio/TV technician for help.

Warning: changes or modifications not expressly approved by the party responsible for compliance could void the user's authority to operate the equipment

The device has been evaluated to meet general RF exposure requirements, the device can be used in portable exposure conditions without restriction