

## Catalogue

<b>1. The document overview.....</b>	<b>3</b>
1.1 About User Manual.....	3
1.2 Driving Risk.....	3
1.3 Preparation before Driving.....	3
1.4 Related Instructions.....	3
<b>2. Product Introduction.....</b>	<b>4</b>
2.1 Description of BALANCE OF THE CAR.....	4
2.2 Description of parts.....	5
2.3 Working Principles.....	6
<b>3. Control and Information Display Device.....</b>	<b>7</b>
3.1 Remote Controller.....	7
3.2 Pedal Sensor.....	8
3.3 Display Board.....	8
<b>4. Safe-using of BALANCE OF THE CAR.....</b>	<b>9</b>
4.1 Weight Limit.....	9
4.2 Maximum Driving Range.....	10
4.3 Speed Limit.....	10
<b>5. Learn driving.....</b>	<b>11</b>
5.1 Operation Procedure.....	12-13
5.2 Protection Function.....	14
5.3 Practice Driving.....	15

1/27

<b>6. Safe Driving.....</b>	<b>16-18</b>
<b>7. Usage of Battery.....</b>	<b>19</b>
7.1 Battery Power.....	19
7.2 Charging process.....	20
7.3 Temperature.....	21
7.4 Description of Battery.....	21
7.5 Shipping Notes.....	22
<b>8. Shipping and Maintenance.....</b>	<b>23</b>
8.1 Clean BALANCE OF THE CAR.....	24
8.2 Store BALANCE OF THE CAR.....	24
<b>9. BALANCE OF THE CAR Parameters.....</b>	<b>25</b>
<b>10. Packing list.....</b>	<b>26</b>
<b>11. Handle Fault.....</b>	<b>27</b>
<b>Enjoy your BALANCE OF THE CAR.....</b>	<b>27</b>

2/27

## 1. The document overview

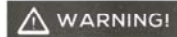
### 1.1 Description

Describe safety and warning information ensure every user can drive BALANCE OF THE CAR safely and enjoy CHIC.

- Introduce every part of BALANCE OF THE CAR Manual warning and caution help you enjoy it.
- This Manual only for BALANCE OF THE CAR
- Any questions, please contact Hangzhou Chic Intelligent Technology Co., Ltd.

### 1.2 Driving Risk

BALANCE OF THE CAR is for personal transporter, Technology and production process have strict test for every BALANCE OF THE CAR. Driving don not according Manual, may cause any danger.





Falling, out of control, collision in any place, including fail to obey BALANCE OF THE CAR Manual, may cause injury even death. In order to minimize the risk of driving, insure you must read BALANCE OF THE CAR Manual.

### 1.3 Preparation before Driving

Before driving, please check level of battery, using details check fifth chapter. Fail to obey BALANCE OF THE CAR Manual, may cause injury.

### 1.4 Related Instructions

Instruction below adapt to all BALANCE OF THE CAR Manual. Please give special attention to related WARNING and NOTE.

 <b>WARNING!</b>	Warning: Any improper action will bring dangers on your personal safety.
 <b>NOTE:</b>	Notes: Users should pay attention to the matters and the relevant usage.

3/27

## 2. Product Introduction

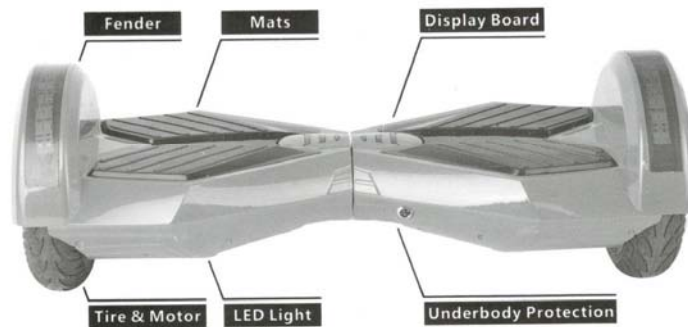
### 2.1 Description of BALANCE OF THE CAR

BALANCE OF THE CAR is a high-tech electric car, which based on dynamic balance principle can control forward, backward, and stop. Easy Operation, flexible control low carbon, green environmental protection and suitable for the road are BALANCE OF THE CAR's advantages. BALANCE OF THE CAR is widely used in leisure walking, scenic tours, security patrol and other fields.



4/27

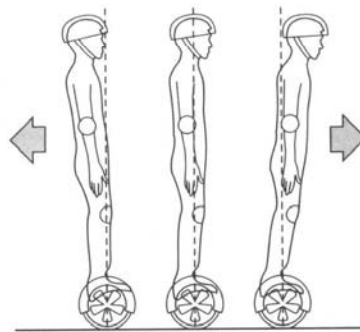
## 2.2 Description of parts



5/27

## 2.3 Working Principles

- BALANCE OF THE CAR uses gyroscope and acceleration sensor to control balance intelligently depend on center of gravity. BALANCE OF THE CAR also use servo-control system to drive motor accurately. It likes a human body, when you stand on the BALANCE OF THE CAR, body forward or backward, power plant will control the wheels forward or backward movement to keep balance. When you turn, need to slow down and move body left or right.
- Built-in inertia dynamic stabilization system can keep the direction of front and back, however, it cannot guarantee the stability of left and right. When you drive BALANCE OF THE CAR, please shift your weight in order to overcome the centrifugal force and improve the turning of security.



6/27

## Remote control

It is equipped with remote control which could control the car operation with 5 meters



Switch Off: If **Car** isn't on riding situation when power on, long press will turn off power.

Lock: If **Car** isn't on riding situation when power on, long press will lock any operation; press again in unlock situation with DUDU alert, then **Car** enter the standby statue in red lights.

Switching Modes: Two driving modes, press this button to switch.

**Outdoor mode system:** Square wave drive, large torque, fast speed, strong climbing ability

**Indoor mode system:** Sine wave drive, mute, sensitive reaction,

Note: Remote controller distance will be decreased gradually along with its battery. **Car** will be shut off automatically after 10 minutes non operation situation; It will not be shut off automatically under lock condition; still in power consumption, If long time not using, please switch it off to reduce power consumption.

7/27

## Pedal Sensors

Car equipped with four sensors under foot pedal, it will adjust to equilibrium situation automatically while stepping on foot pad.

- Do not step beyond foot pad edge, please ensure your foot is right stand on the pedal while driving.
- Do not load any luggage on the pedal, the sensor will keep recognized **Car** power on, it will increases the probability of collision, resulting in injury or damage to drive or scooter itself.

### Display Panel

Display panel is located in the middle of **Car** which be used to display running information.

• A Power display area: it shows full power when blue light turns on three lattice ; It shows 50%power available when blue light turns on two lattice; It shows 20%power available when blue light turns on one lattice. The user need charge **Car**.

- B Running display area: when drive stand on the pedal and trigger sensors, running indicator lights turn on in operation status. If an error occurred in running system, the indicator lights will be into red light.



8/27

## 4. Safe-using of BALANCE OF THE CAR

### About safe-using

We hope every user can drive BALANCE OF THE CAR safely and enjoy the fun. You can recall the memories of learning how to ride a bicycle, drive a car, ski or use other similar means of transportation; all these experiences can be applied to our products.

- Please follow the related content in "Product Manual". We strongly recommend that you should read the "Product Manual" carefully before riding at the first time. Checking whether tires are damaged, parts are loose before driving. If there is any abnormal situation, please contact local dealer for repair.
- Please carefully read the "Product Manual", that will help you to get a lot of important safety information such as speed limits, vibration alert and safety shutdown, etc.
- Do not make any use of BALANCE OF THE CAR to endanger the safety of persons or property.
- Do not modify the parts of BALANCE OF THE CAR randomly, it will affect the performance of BALANCE OF THE CAR, even cause serious injury.

### 4.1 User's Weight Limit

- The following two points are the reason of weight limit:
  1. Ensure the safety of user.
  2. Reduce the damage due to overload.
- Maximum Load: 100 kg.
- Minimum Load: 20 kg.



**WARNING!**

- Overweight may make you in a danger of tumble.

9/27

### 4.2 Maximum Range

There are a lot of factors that will affect drive distance, such as:

- Landform: A smooth, flat surface will increase the driving distance, on the contrary, it will reduce the distance.
- Weight: The weight of the driver can affect driving distance.
- Ambient temperature: Please ride and store BALANCE OF THE CAR under recommended temperature, which will increase driving distance; on the contrary, it will reduce the distance.
- Maintenance: Reasonable battery charging and maintenance will increase the distance.
- Speed and Driving Style: Maintain a moderate speed will increase distance, on the contrary, frequent start, stop, acceleration and deceleration will reduce the distance.

### 4.3 Speed Limit

- BALANCE OF THE CAR's maximum speed is 10 km/h.
- When the speed close to the maximum allowable speed, the buzzer alarm will ring.
- BALANCE OF THE CAR can keep the user in balance within the specified speed. If the speed exceeds the specified speed; BALANCE OF THE CAR will take the initiative to tilt the driver so as to make the speed in a safe range.

10/27

## 5. Learn driving

It is important to learn and remember the related security matters and notes before driving BALANCE OF THE CAR.

### 5.1 Operation Procedure

- Step 1: Start BALANCE OF THE CAR  
Open the charger port of vehicle, press the power button.
- Step 2: Prepare driving
  1. Put BALANCE OF THE CAR on the flat ground.
  2. Put one foot on pad that will trigger pedal switch to run indicator light, after the system enters the self-balancing, then put the other foot on the pad.
- Step 3: Control BALANCE OF THE CAR  
After standing up successfully, keeping the balance of the center of gravity can maintain BALANCE OF THE CAR stationary state. Small forward or backward through body, remember that do not moves large extent.

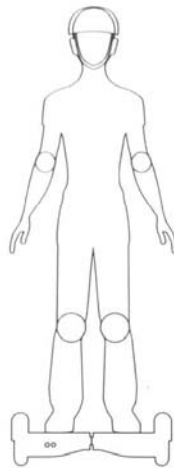


#### NOTE:

If user stands BALANCE OF THE CAR, platform is not at the level state, the buzzer will alarm and warning indicator will light up. At that time the system cannot enter self-balancing status, users are forbidden to operate BALANCE OF THE CAR

11/27

- Step 4: Control Turning  
Learn your body, BALANCE OF THE CAR will turn to the left; rightward, it will turn to the right.
- Step 5: Get off  
Keep BALANCE OF THE CAR balance, get one foot down, then the other foot left mat quickly.

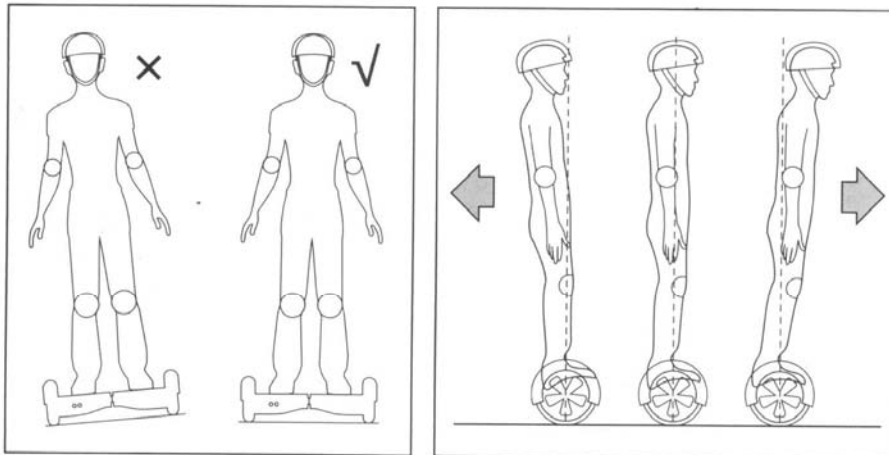


The right foot forward turn left

The left foot forward turn right

12/27





Driving Schematic



- Do not turn sharply in the case of high speed to avoid dangerous situations.
- Do not drive and turn round quickly on slopes, it may cause dangerous issues.

13/27

## 5.2 Protection Function

During operation, if there is a system error or illegal operations, **BALANCE OF THE CAR** will prompt drivers in different ways.

- When you get on the vehicle, the surface forward or backward more than 10 degrees.
- Battery voltage is too low.
- In charging
- Riding process, the following is forbidden in uphill.
- Over-speed.
- Battery is shortage.
- Car body rocking back and forth over 30S.
- System enters protection mode, alarm indicator will be lighted up, buzzer will alarm.
- Platform forward or backward more than 35 degrees, vehicle will engine off.
- Tire blocked, **BALANCE OF THE CAR** will halt after 2 seconds.
- Battery is insufficient below protection, **BALANCE OF THE CAR** will engine off after 15 seconds.
- Sustained high discharge current performance (such as long time drive at long steep slope), **BALANCE OF THE CAR** will engine off after 15 seconds.

14/27

## WARNING!

When BALANCE OF THE CAR engine off, system will halt, press Battery Display to unlock. Do not continue driving BALANCE OF THE CAR when the battery is exhausted or the system issues the stop information, it may lead you in trouble. Continue driving under low power will affect battery life.

### 5.3 Practice Driving

Learn how to ride BALANCE OF THE CAR in an open field until you can get on, off the vehicle, forward and backward, turn and stop easily.

- Dress in casual clothes and flat shoes.
- You can drive BALANCE OF THE CAR in outdoor space until you can easy control. Get on, forward, backward, turning, get off.
- Drive in flat ground.
- You can drive BALANCE OF THE CAR in different terrain, please slow down in an unfamiliar terrain.
- BALANCE OF THE CAR is design to be a personal transporter drive in flat ground, if you drive in different terrain, please slow down in an unfamiliar terrain.
- If you are not skilled at driving BALANCE OF THE CAR, please avoid driving it in crowded place. When you go through a door, please make sure BALANCE OF THE CAR can pass normally.

15/27

## 6. Safe Driving

This section provides some safety knowledge and cautionary statements, letting you learn about the safety precautions before using the BALANCE OF THE CAR

To ensure that you can safely drive BALANCE OF THE CAR, please be sure to read product manuals and comply with the relevant safety instructions. Please note all the safety warnings and safety cautions that are mentioned in the product manuals, which can make drive BALANCE OF THE CAR safer and get more pleasure.

## WARNING!

- At any time using the BALANCE OF THE CAR, it may cause injury due to loss of control, collision and falling down. To avoid injuring, you must carefully read the user manual and drive the BALANCE OF THE CAR referring to the manual description. Please make sure to use products in good condition and carefully read and well-known all users materials provided by our company before using the product.
- When you are driving BALANCE OF THE CAR, make sure to take all the safety measures, such as: wear a helmet, knee pads, elbow pads and other protective gear.
- BALANCE OF THE CAR is only used for personal entertainment use.
- It is prohibited to use on motorway.
- Do not allow children, the elderly, pregnant women drive it.
- Do not drive after drinking or using drugs.
- Do not carry items when you are driving it.
- When driving BALANCE OF THE CAR, please comply with local traffic laws, give way to pedestrians.
- Please be alert to things in front or far away from you, keeping good vision will help you drive BALANCE OF THE CAR safer.

16/27



- Hands clench the handle, legs relax, knees slightly bent, which would help you keep balance when you encounter uneven ground.
- Make sure the feet are always riding on the pads.
- Please wear suitable sports apparel to drive BALANCE OF THE CAR, so that you can deal with emergencies better.
- BALANCE OF THE CAR can only be driven by one person, it cannot be driven by two or more people.
- Users and their belongings should not exceed the maximum load (100kg), or it would make users more easily to fall or get injured during the course of driving, and even cause BALANCE OF THE CAR functional damage. In addition, the driver should not be less than 20kg, which will cause driver cannot operate BALANCE OF THE CAR, especially on the downhill the driver can't reduce or stop safely.
- Ensure the speed within a safety range.
- If accident happens, please stay in place and wait for relevant departments to deal with events.
- When you drive BALANCE OF THE CAR along with other users, please keep a certain distance between each other to avoid a collision.
- You should always keep in mind your height has increased 10 centimeters, be carefully when you pass doors.
- When turning, please keep balance.
- Do not distract when driving BALANCE OF THE CAR, such as answer the phone, listen to music, or engage in any other activities.
- Do not allow to drive on slippery road in rainy day, reverse turning with a high-speed and long range high-speed.

17/27

- The personal transport is not in order to design, test, or relevant proof way to become medical equipment. Therefore, the user must use it without external force to help BALANCE OF THE CAR
- Do not drive in a dark place.
- Avoid driving in impediment and smooth surface, such as: snow, ice, and slippery floor.
- Do not drive in road with obstacles, such as twigs, litter or small stones, etc.
- Avoid driving in narrow space.
- Avoid driving on a steep slope.
- Avoid driving unsafe place, including Inflammable gas, steam, liquid, dust, fiber which could cause fire and explosion accidents.

18/27

## 7. Usage of Battery

This section mainly describe the charging method of BALANCE OF THE CAR, how to maintain the battery, some security issues, and battery specifications. For users' safety and the maximum extent of prolonging the battery life and improve battery performance, please follow the following operations using the battery.

### 7.1 Battery Power

You must stop driving if BALANCE OF THE CAR displays low power, or it may affect lifetime and cause dangerous problems. Don't use the battery if the following occurs.

- Emit odor or overheat.
- Don't touch any leaking materials.
- Children and animals are forbidden to touch battery.
- The charger must be taken out before installing or driving or it may cause danger.
- Battery contains dangerous substances, do not open the battery, do not insert anything into the battery.
- Please use the charger provided by BALANCE OF THE CAR
- Don't charge the battery that has over discharged. It should be abandoned for safety.
- BALANCE OF THE CAR battery should be used obey local law.

19/27

### 7.2 Charging process

- Ensure charging port is dry.
- Open the charging port.
- Plug the charging cable into the BALANCE OF THE CAR, make sure green indicate light up, then connect the cable with the power supply (100V ~ 240V; 50, 60 Hz).
- The red light indicates that it begins to charge, otherwise check whether the cable is connected.
- When the indicator light from red to green, it indicates that power is fully charged. At this time, please stop charging, over-charging will affect lifetime.
- Use local standard plug.
- Charge and store battery as suggested, otherwise it will damage the battery. The charging time is about 2-3 hours.
- Keep the charged environment clean and dry.



20/27

### 7.3 Temperature

- The best charge temperature is 0°C~40°C. Over cold and over heat will not completely full of battery.

### 7.4 Description of Battery

Contents	Parameters
Battery	Lithium Battery
Charging time	2-3h
Voltage	36V
Initial Capacity	2-4Ah
Working Temperature	-15°C~50°C
Charging Temperature	0°C~40°C
Storage Time ( -20°C~ 25°C)	12months
Storage Humidity	5%-95%

21/27

### 7.5 Shipping Notes



Lithium battery is dangerous articles. Shipping lithium should be allowed by local law.



Please contact **BALANCE OF THE CAR** or our authorized agent, and then **BALANCE OF THE CAR** can be send to you according to your requirement.

22/27

## 8. Shipping and Maintenance

BALANCE OF THE CAR requires the user to do routine maintenance. This chapter describes maintenance steps and important operating tips. Before you perform the following operations, ensure the power and charging cable is disconnected. If the power or the battery is charging, the operation is not allowed.

### 8.1 Clean BALANCE OF THE CAR

- Disconnect the charger and turn off BALANCE OF THE CAR
- Wipe the cover.
- **⚠ WARNING!**
- Avoid using water or other liquids on the BALANCE OF THE CAR for cleaning. The IP is 54. If water or other liquids seep into the car, it will cause permanent damage to the internal electronics.

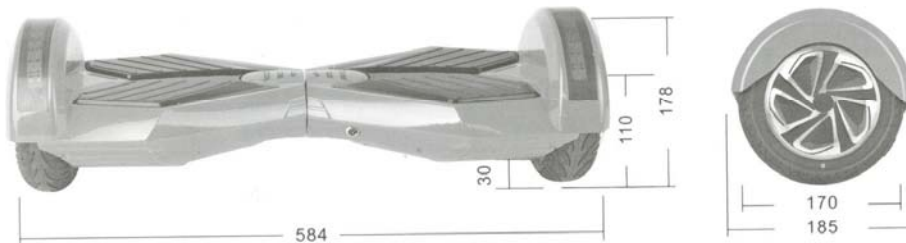
### 8.2 Store BALANCE OF THE CAR

- Fully charge your battery before storing.
- If you store BALANCE OF THE CAR more than one month, please remove the battery and charge it at least every three month.
- If the storage ambient temperature is below 0 °C, please do not charge. You can bring the vehicle into a warm environment (above 10 °C) for charging.
- To prevent dust coming, you can cover BALANCE OF THE CAR
- Store BALANCE OF THE CAR indoors, a dry and suitable temperature. If you do not use it for a long time, please do not connect the power.
- **⚠ WARNING!**
- Users who disassemble BALANCE OF THE CAR without permission will regard as giving up the right of warranty.

23/27

## 9. BALANCE OF THE CAR Parameters

Units of measurement : mm



24/27

Condiciones de carga de Batería en alta temperatura o baja temperatura.

ESPECIFICACION	PARAMETROS
Tipo de Batería	Batería de Litio
Tiempo de carga	2-3 Horas
Voltaje	36V
Capacidad inicial	2-4ah
Tempreatrura de Trabajo	-15°C~50°C
Temperatura de carga	0°C~40°C
Temperatura de almacenaje(-20°C~25°C)	12 meses
Humedad relativa	5%-95%

25/27

Especificaciones técnicas de VELOX

ESPECIFICACION	PARAMETROS
Peso Neto / Bruto	10kg/13kg
Carga Mínima	20kg
Carga maxima	100kg
Velocidad maxima por Hr	10km/h
Maxima distancia recorrida	15-20km
Maximo ngulo de accionamiento	15 degree
Radio de giro	0
Poder	Batería de Litio recargable
Voltaje	100-240V
Tamaño	L584mm*W220mm*H178mm
Tamaño de la caja	L660mm*W290mm*H250mm
Altura de chasis	25MM
Altura de plataforma	120MM
Llantas	No inflables
Diametro de Llantas	8.6 inch
Batería	36V,4.4AH

26/27

## 11. Handle Fault

BALANCE OF THE CAR has self-examination function, such as sensors, the system static current, system dynamic current, motor speed fluctuation, etc. You can contact our service department to solve problems.

## Enjoy your BALANCE OF THE CAR

**FCC Caution:** Any changes or modifications not expressly approved by the party responsible for compliance could void the user's authority to operate this equipment. This device complies with Part 15 of the FCC Rules. Operation is subject to the following two conditions: (1) This device may not cause harmful interference, and (2) this device must accept any interference received, including interference that may cause undesired operation.

**NOTE:** This equipment has been tested and found to comply with the limits for a Class B digital device, pursuant to Part 15 of the FCC Rules.

These limits are designed to provide reasonable protection against harmful interference in a residential installation. This equipment generates, uses and can radiate radio frequency energy and, if not installed and used in accordance with the instructions, may cause harmful interference to radio communications.

However, there is no guarantee that interference will not occur in a particular installation. If this equipment does cause harmful interference to radio or television reception, which can be determined by turning the equipment off and on, the user is encouraged to try to correct the interference by one or more of the following measures.

The device has been evaluated to meet general RF exposure requirement. The device can be Used in portable exposure condition without restriction.