



Nightingale Antenna Report



Report No.: Nightingale_Ant_Rev.01
Date: June 18, 2024

Copyright © ARLO Technologies All rights reserved.
Test Report shall not be reproduced except in full

This document contains information which is proprietary and confidential to ARLO Technologies. Disclosure to persons other than the officers, employees, agents, or subcontractors of the Company or licensee of this document without the prior written permission of ARLO Technologies is strictly prohibited.

Table of Contents

| | | |
|----------|--|----------|
| 1 | Summation Test Report | 3 |
| 1.1 | <i>EUT Information.....</i> | 3 |
| 1.2 | <i>Antenna Pictures.....</i> | 3 |
| 2 | Test Results..... | 4 |
| 2.1 | <i>Gain dBi 2.4GHz WiFi.....</i> | 4 |
| 2.2 | <i>2.4GHz WiFi PHI / THETA Radiation Patterns.....</i> | 5 |
| 3 | Report Modifications | 5 |

| | Name | Date |
|--------------|---|--------------|
| Prepared by: | Alan Pasion RF Engineer | June 18,2024 |
| Signature: |  | |
| Reviewed by: | Todd Van Cleave Director, Hardware | June 18,2024 |
| Signature: |  | |
| | | |

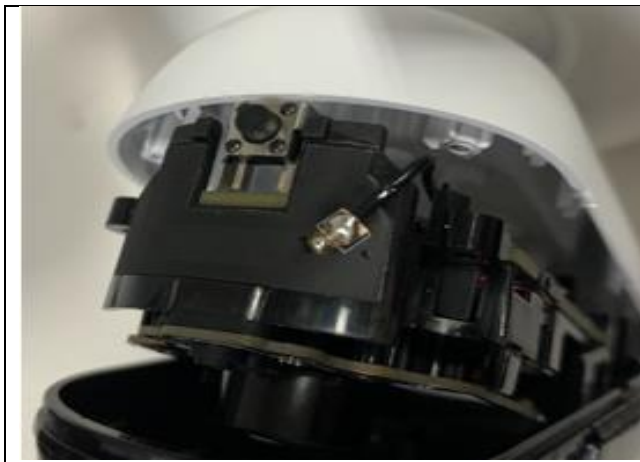
The contents of this page are subject to the confidentiality information on page one.

1 Summation Test Report

1.1 EUT Information

| | |
|--|---|
| Date of Measurements: | June 14, 2024 |
| Device Manufacturer: | ARLO Technologies |
| Device Model: | FLW2001 / FLW1001 |
| Device Description: | WIFI Spotlight Camera |
| Device S/N: | N/A |
| Device Bands: | WiFi 2.4 GHz |
| Device Hardware Revision: | DV2 |
| Device Software Revision: | N/A |
| IMEI: | N/A |
| FCC ID: | N/A |
| Antenna Description | Internal, PIFA |
| Antenna Model Name/PN | C107-512112-A |
| Antenna Manufacturer | WHAYU Industrial Co. LTD |
| Antenna Brand | WHAYU |
| Antenna Mfg. Address | No. 326, Sec. 2, Gongdao 5th Rd., East Dist., Hsinchu City 300042 , Taiwan |
| Configuration of Primary Mechanical Mode | Device is configured in the preferred mode per manufacturer instructions |
| Comments: | 1. Single antenna for WiFi operation. 2. DUT centered in the test plane. |

1.2 Internal Antenna Picture



The contents of this page are subject to the confidentiality information on page one.

2 Antenna Gain Results

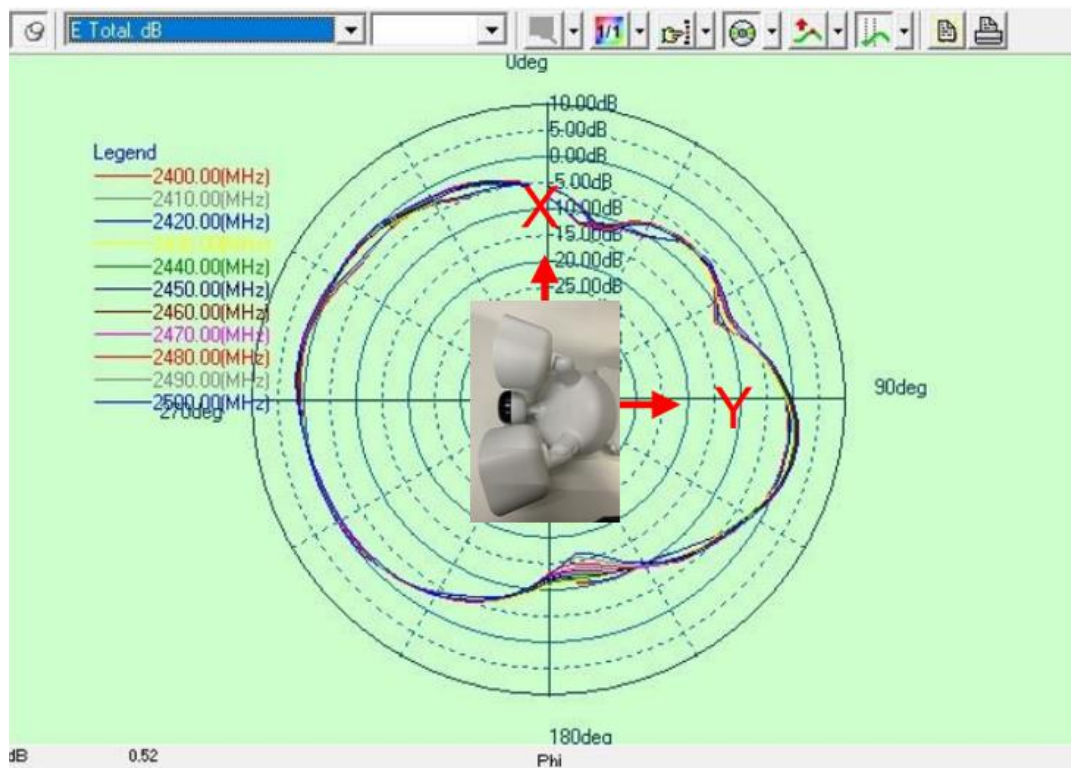
Note:

- Free Space – Antenna Fixed Internal

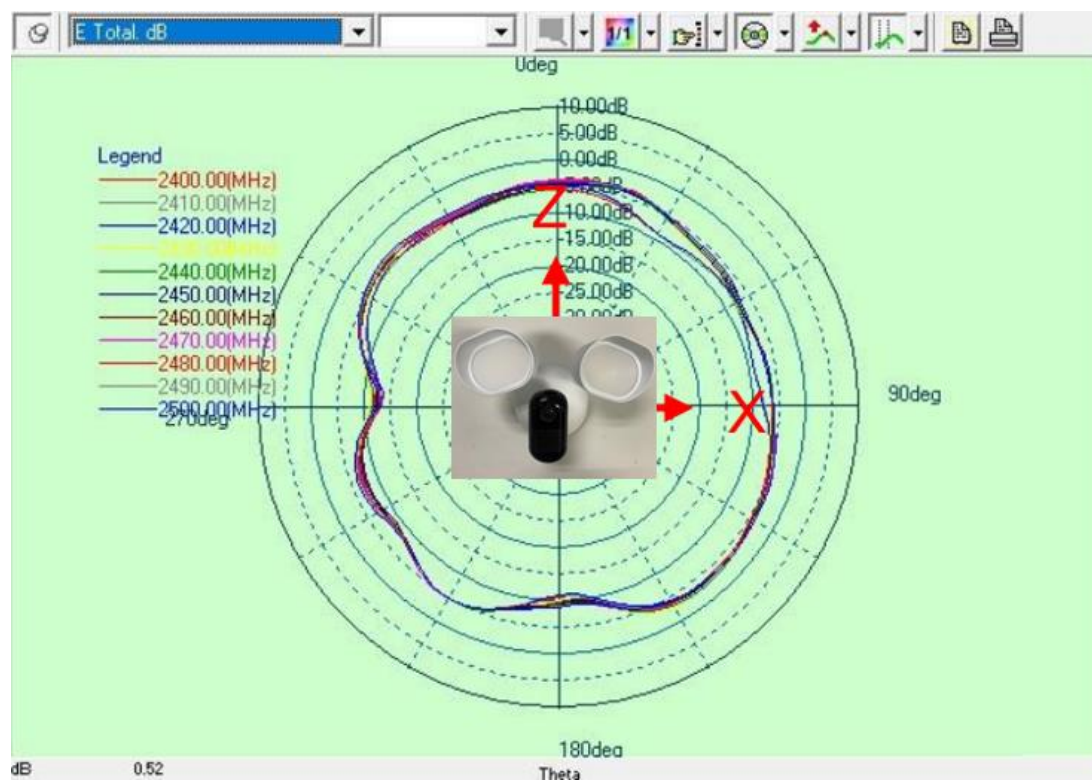
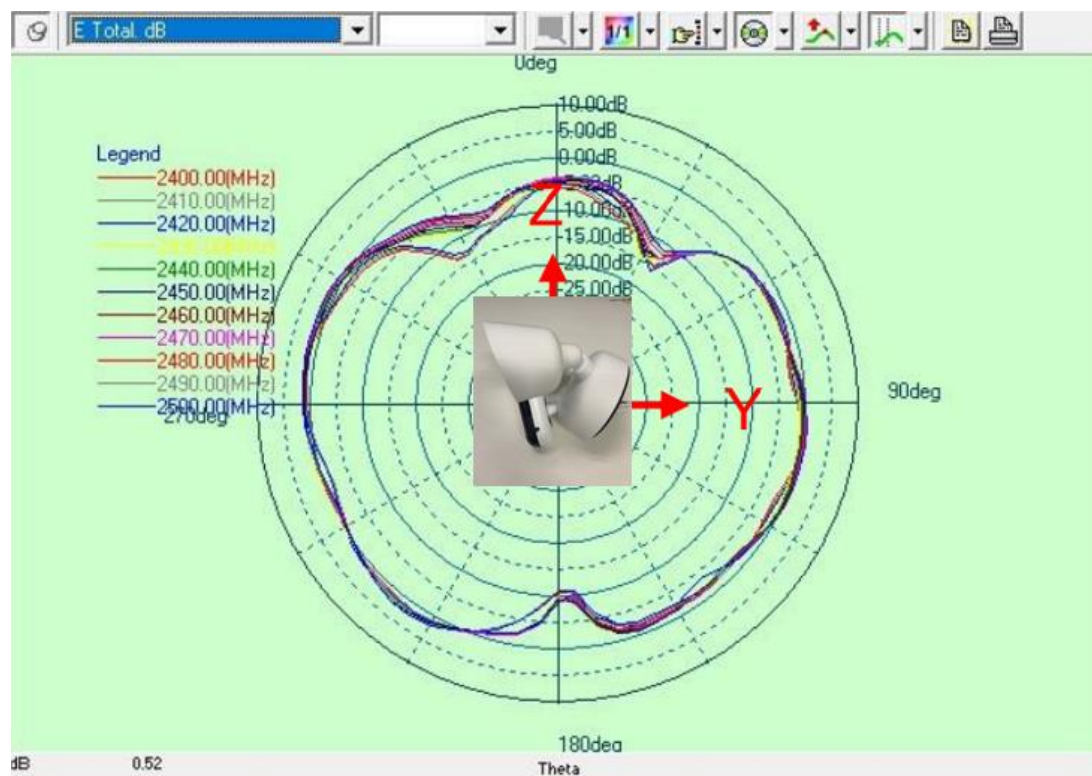
2.1 2.4 GHz Gain [dBi]

| | |
|-----------------|-----------|
| Frequency [MHz] | 2400-2500 |
| Peak gain [dBi] | 2.6 |

2.2 2.4 GHz Radiation Plots



The contents of this page are subject to the confidentiality information on page one.



23

The contents of this page are subject to the confidentiality information on page one.

3 Report Modifications

| Record of Modification | | |
|------------------------|------------|-----------------------------|
| Issue | Date | Modifications/Pages changed |
| 1.0 | 06/18/2024 | Arlo initial release |
| | | |
| | | |
| | | |
| | | |

End of Report

23

The contents of this page are subject to the confidentiality information on page one.