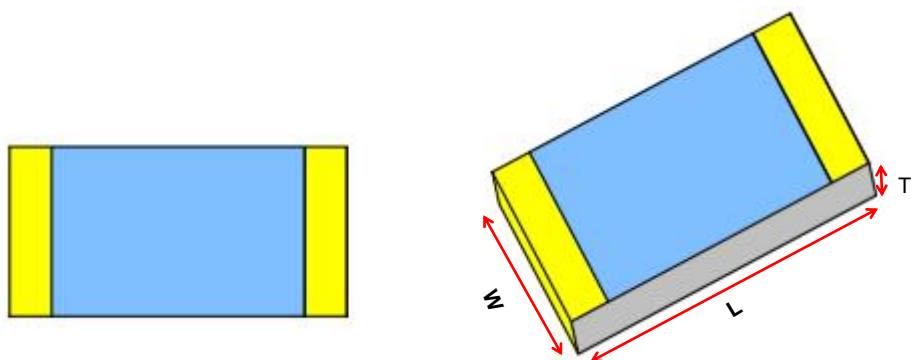


3216 Chip Antenna

For Bluetooth / WLAN Applications



	Dimension (mm)
L	3.2 ± 0.20
W	1.6 ± 0.20
T	0.5 ± 0.05

Manufacturer: Zhuhai Lexia Intelligent Technology Co., LTD
Add: B203, Building 15, No. 1, Hagongda Road, Tangjiawan Town, High-tech Zone, Zhuhai City

东莞市鑫巢电子科技有限公司

Dongguan Xinchao Electronic Technology Co., Ltd

P/N:XC-WIBL3216DB-X86

1. Electrical Specification

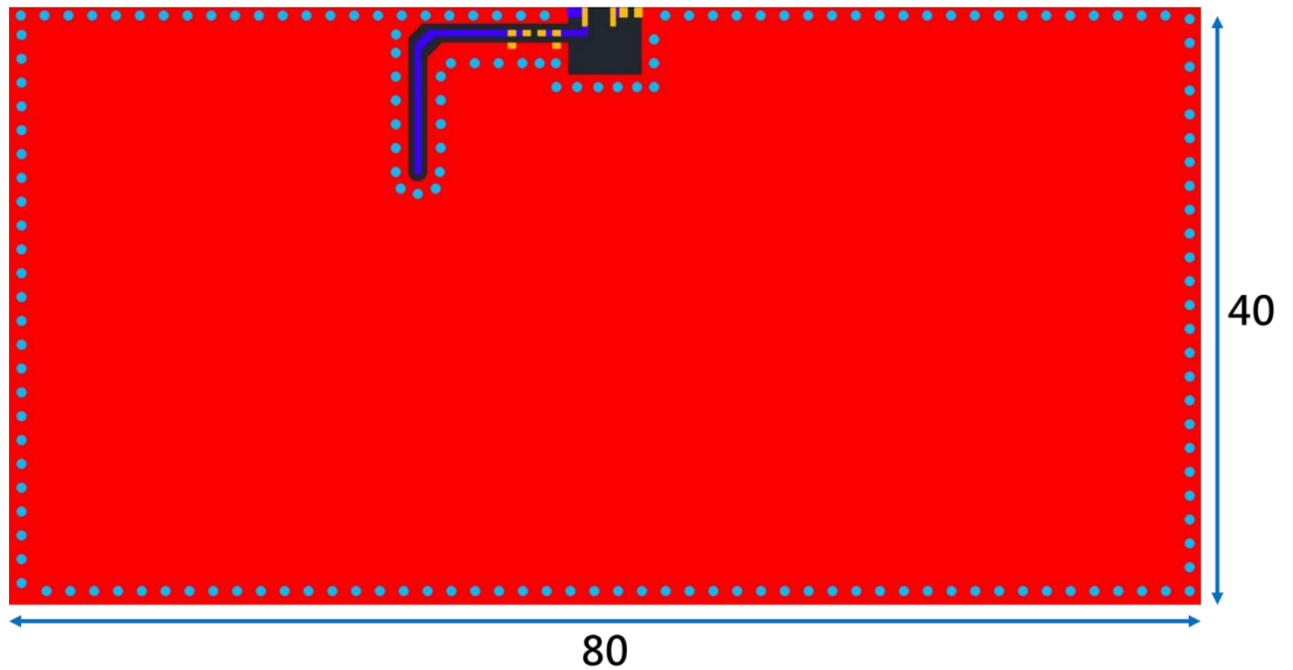
Specification		
Part Number	XC-WIBL3216DB-X86	
Central Frequency	2450	MHz
Bandwidth	90 (Min.)	MHz
Return Loss	-10 (Max)	dB
Peak Gain	2.76	dBi
Impedance	50	Ω
Operating Temperature	-40~+85	°C
Maximum Power	1	W
Resistance to Soldering Heats	10 (@ 260°C)	sec.
Polarization	Linear	
Azimuth Beamwidth	Omni-directional	
Termination	Cu / Sn (Leadless)	

2. Recommended PCB Pattern (Unit : mm)

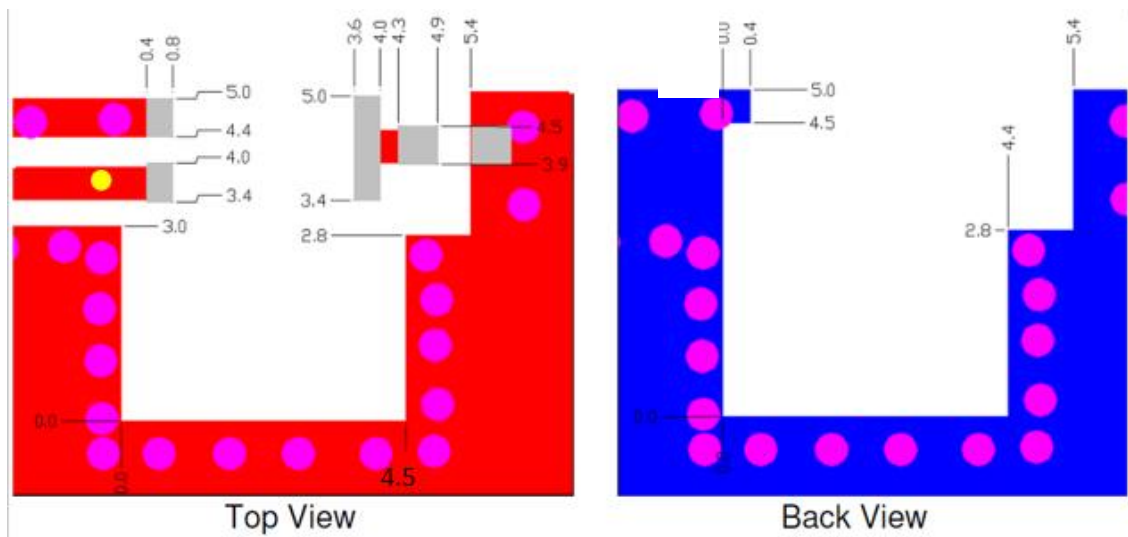
a.Evaluation Board Dimension

东莞市鑫巢电子科技有限公司

Dongguan Xinchao Electronic Technology Co., Ltd



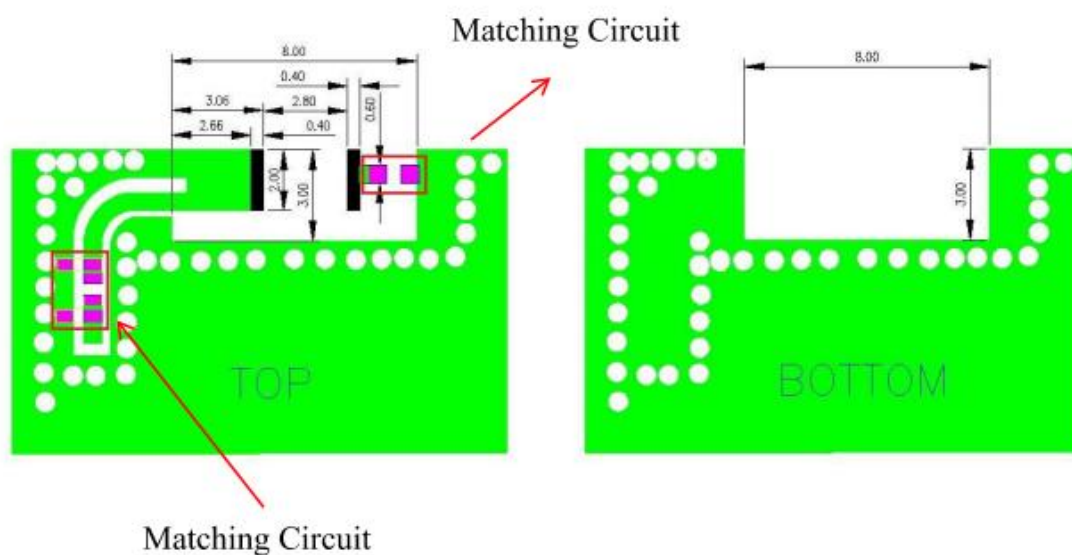
b.Layout Dimensions in Clearance area--1 (Size=5.0*4.0mm)



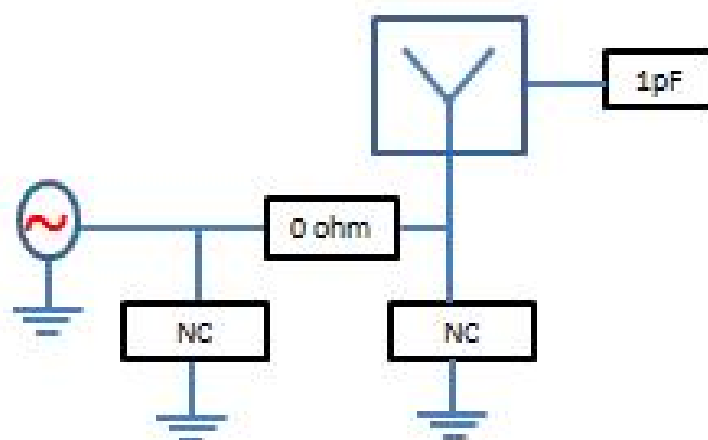
C.Layout Dimensions in Clearance area--2 (Size=8.0*3.0mm)

东莞市鑫巢电子科技有限公司

Dongguan Xinchao Electronic Technology Co., Ltd



3. Suggested Matching Circuit

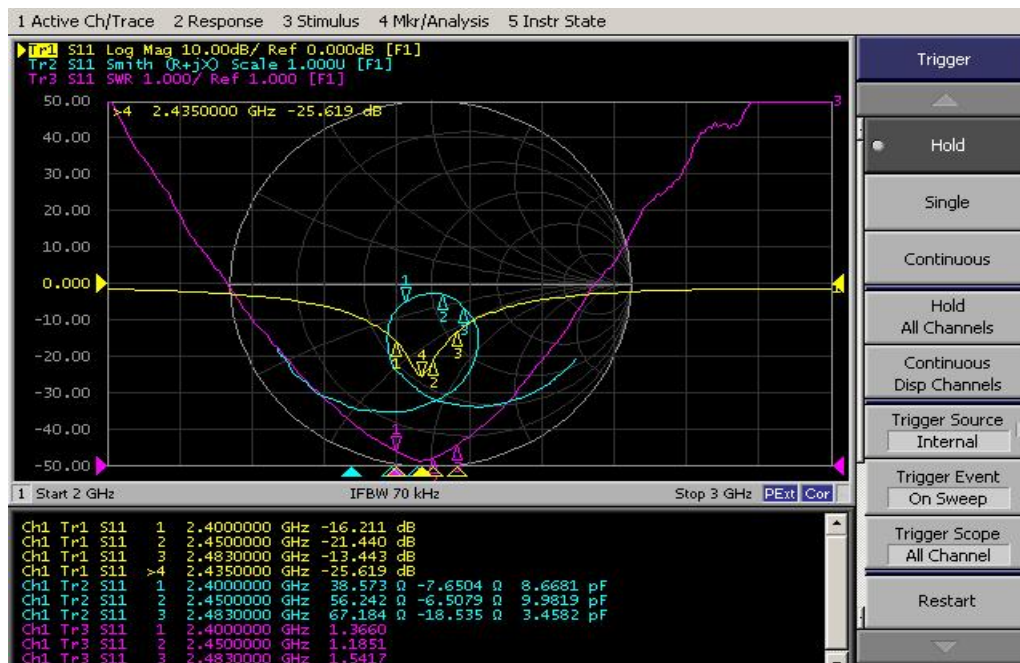


4. Measurement Results

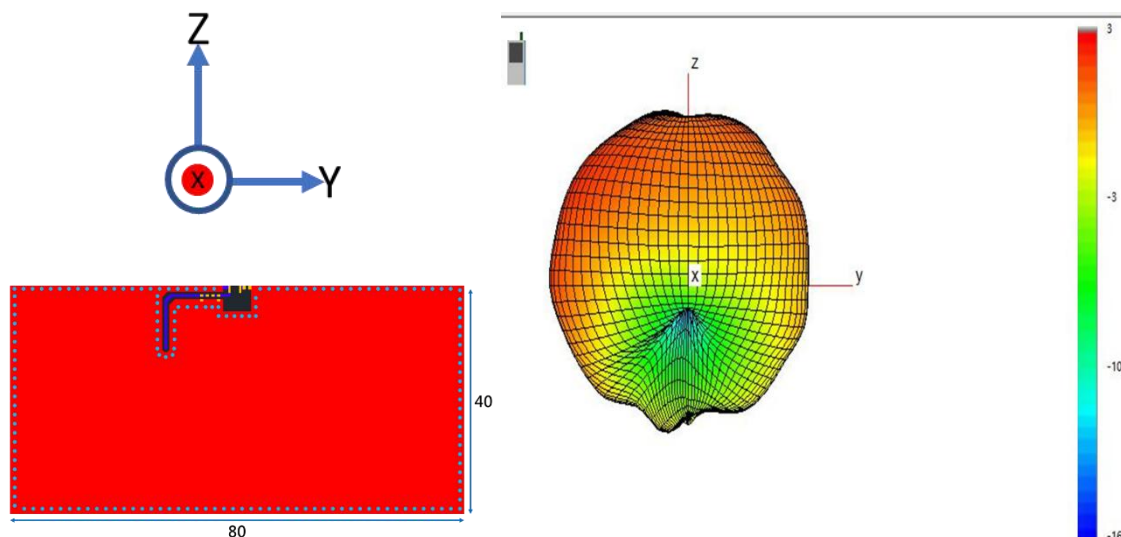
东莞市鑫巢电子科技有限公司

Dongguan Xinchao Electronic Technology Co., Ltd

a. Return Loss



b. Radiation Pattern



XY-Plane Total

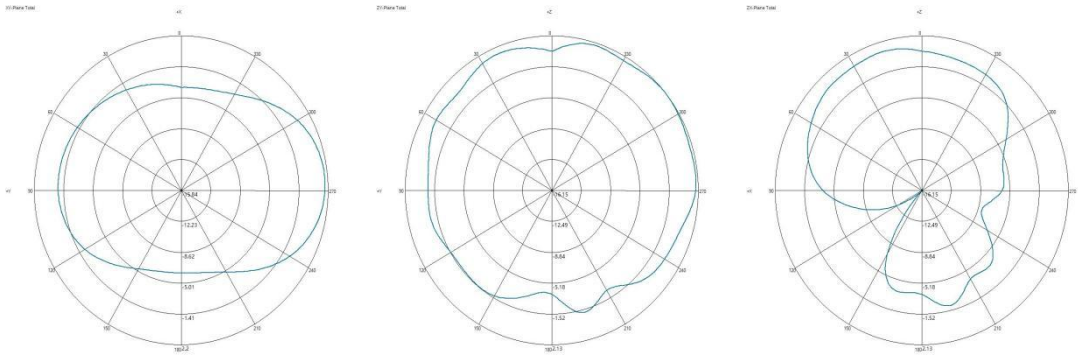
ZY-Plane Total

ZX-Plane Total

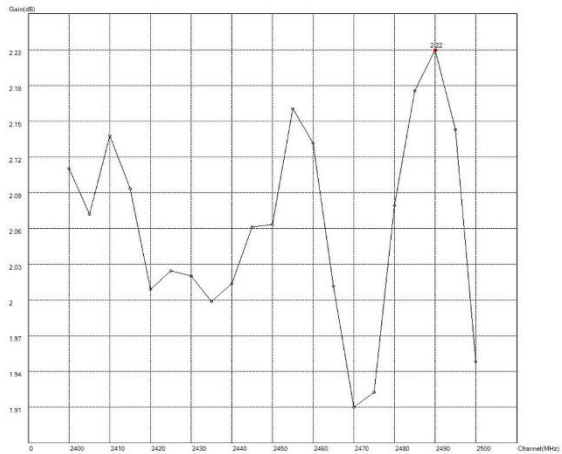
Add: 东莞市东城街道莞龙路东城段78号3栋290 电话: 17688737278

东莞市鑫巢电子科技有限公司

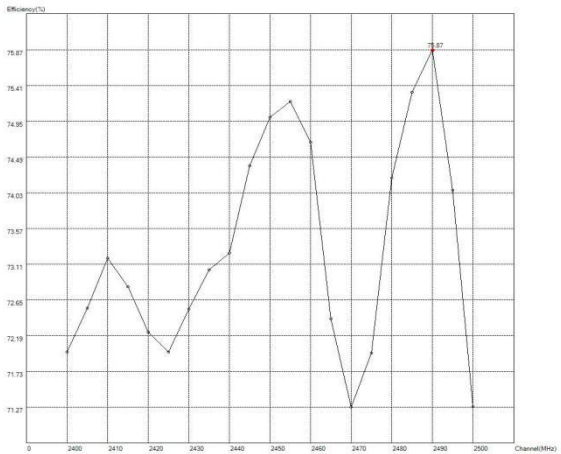
Dongguan Xinchao Electronic Technology Co., Ltd



Gain-Plane



Efficiency-Plane



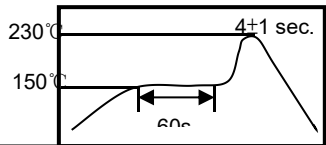
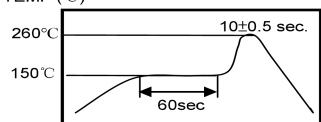
Frequency (MHz)	2400	2450	2500
Efficiency (dB)	-1.42	-1.24	-1.47
Efficiency (%)	71	75	71
Peak Gain (dBi)	2.31	2.76	2.34

5.Reliability and Test Condictions

ITEM	REQUIREMENTS	TEST CONDITION
------	--------------	----------------

东莞市鑫巢电子科技有限公司

Dongguan Xinchao Electronic Technology Co., Ltd

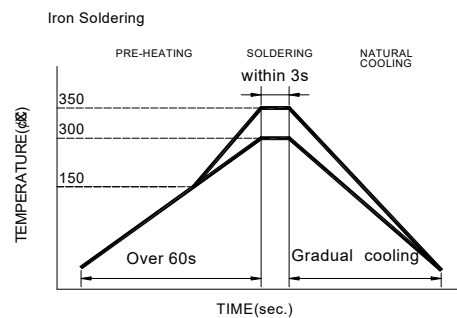
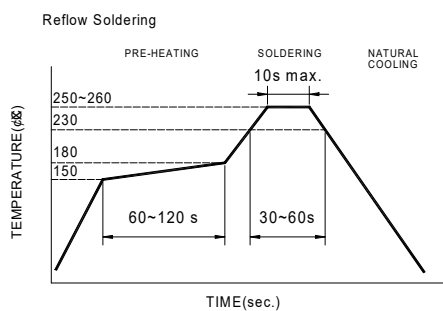
Solderability	1. Wetting shall exceed 90% coverage 2. No visible mechanical damage TEMP 	Pre-heating temperature:150℃/60sec. Solder temperature:230±5℃ Duration:4±1sec. Solder:Sn-Ag3.0-Cu0.5 Flux for lead free: rosin															
Solder heat Resistance	1. No visible mechanical damage 2. Central Freq. change :within ± 6% TEMP (℃) 	Pre-heating temperature:150℃/60sec. Solder temperature:260±5℃ Duration:10±0.5sec. Solder:Sn-Ag3.0-Cu0.5 Flux for lead free: rosin															
Component Adhesion (Push test)	1. No visible mechanical damage	The device should be reflow soldered(230±5℃ for 10sec.) to a tinned copper substrate A dynameter force gauge should be applied the side of the component. The device must with-ST-F 0.5 Kg without failure of the termination attached to component.															
Component Adhesion (Pull test)	1. No visible mechanical damage	Insert 10cm wire into the remaining open eye bend ,the ends of even wire lengths upward and wind together. Terminal shall not be remarkably damaged.															
Thermal shock	1. No visible mechanical damage 2. Central Freq. change :within ±6% <table border="1" data-bbox="383 1249 842 1482"> <thead> <tr> <th>Phase</th><th>Temperature(℃)</th><th>Time(min)</th></tr> </thead> <tbody> <tr> <td>1</td><td>+85±5℃</td><td>30±3</td></tr> <tr> <td>2</td><td>Room Temperature</td><td>Within 3sec</td></tr> <tr> <td>3</td><td>-40±2℃</td><td>30±3</td></tr> <tr> <td>4</td><td>Room Temperature</td><td>Within 3sec</td></tr> </tbody> </table>	Phase	Temperature(℃)	Time(min)	1	+85±5℃	30±3	2	Room Temperature	Within 3sec	3	-40±2℃	30±3	4	Room Temperature	Within 3sec	+85℃=>30±3min -40℃=>30±3min Test cycle:10 cycles The chip shall be stabilized at normal condition for 2~3 hours before measuring.
Phase	Temperature(℃)	Time(min)															
1	+85±5℃	30±3															
2	Room Temperature	Within 3sec															
3	-40±2℃	30±3															
4	Room Temperature	Within 3sec															
Resistance to High Temperature	1. No visible mechanical damage 2. Central Freq. change :within ±6% 3. No disconnection or short circuit.	Temperature: 85±5℃ Duration: 1000±12hrs The chip shall be stabilized at normal condition for 2~3 hours before measuring.															
Resistance to Low Temperature	1. No visible mechanical damage 2. Central Freq. change :within ±6% 3. No disconnection or short circuit.	Temperature:-40±5℃ Duration: 1000±12hrs The chip shall be stabilized at normal condition for 2~3 hours before measuring.															
Humidity	1. No visible mechanical damage 2. Central Freq. change :within ±6% 3. No disconnection or short circuit.	Temperature: 40±2℃ Humidity: 90% to 95% RH Duration: 1000±12hrs The chip shall be stabilized at normal condition for 2~3 hours before measuring.															

东莞市鑫巢电子科技有限公司

Dongguan Xinchao Electronic Technology Co., Ltd

6.Soldering and Mounting

Mildly activated rosin fluxes are preferred. The minimum amount of solder can lead to damage from the stresses caused by the difference in coefficients of expansion between solder, chip and substrate. The terminations are suitable for all wave and re-flow soldering systems. If hand soldering cannot be avoided, the preferred technique is the utilization of hot air soldering tools.



Recommended temperature profiles for re-flow soldering in Figure 1.

Products attachment with a soldering iron is discouraged due to the inherent process control limitations. In the event that a soldering iron must be employed the following precautions are recommended.

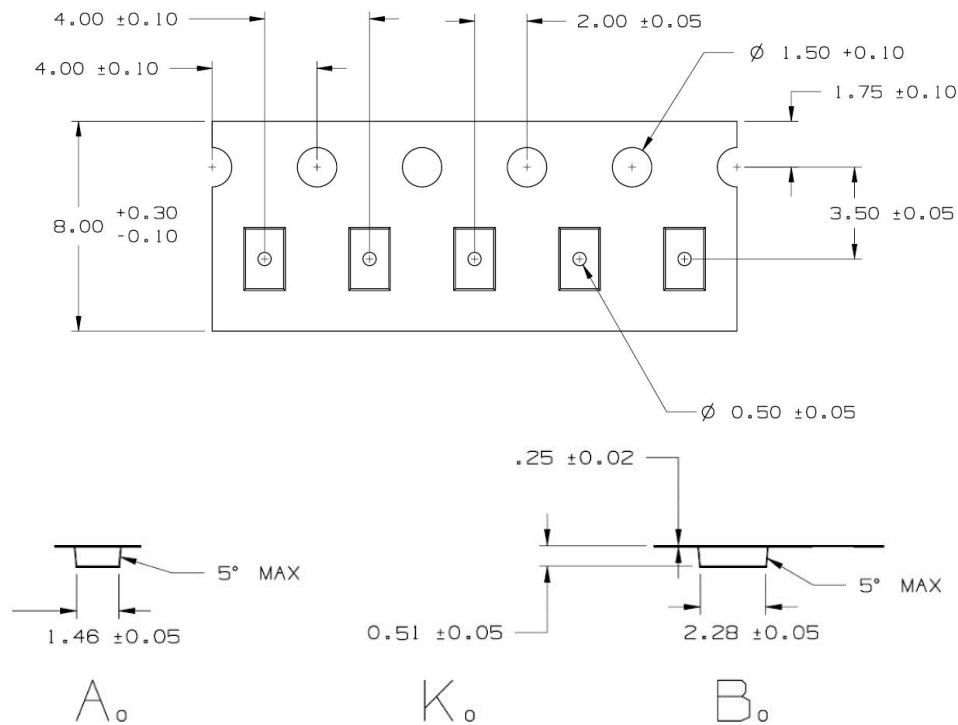
- Preheat circuit and products to 150°C
- Never contact the ceramic with the iron tip
- Use a 20 watt soldering iron with tip diameter of 1.0mm
- 280°C tip temperature (max)
- 1.0mm tip diameter (max)
- Limit soldering time to 3 sec.

东莞市鑫巢电子科技有限公司

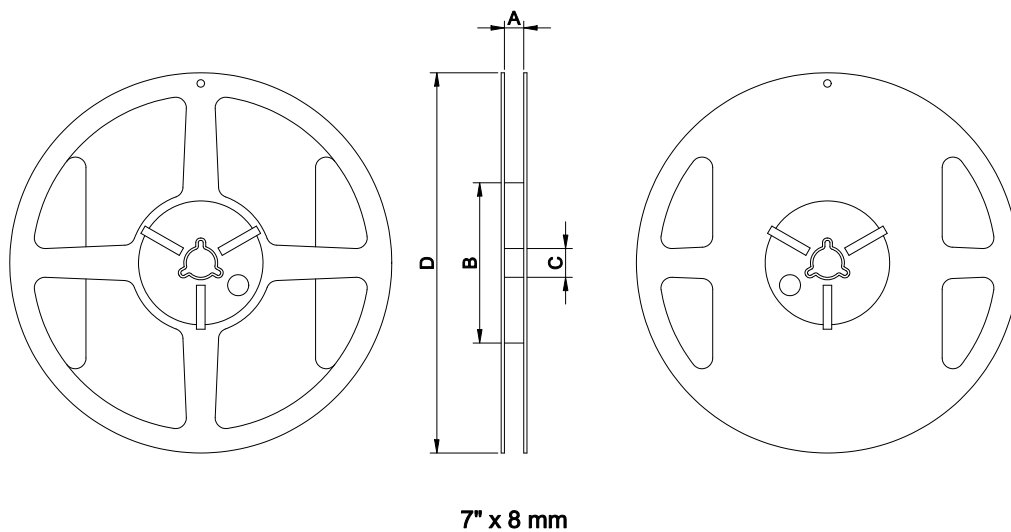
Dongguan Xinchao Electronic Technology Co., Ltd

7.Packaging Information

◆Tape Specification:



◆Reel Specification: (7", $\phi 180$ mm)



东莞市鑫巢电子科技有限公司

Dongguan Xinchao Electronic Technology Co., Ltd

Tape Width(mm)	A(mm)	B(mm)	C(mm)	D(mm)	Chip/Reel(pcs)
8	9.0±0.5	60±2	13.5±0.5	178±2	6000

8.Storage and Transportation Information

Storage Conditions

To maintain the solderability of terminal electrodes:

1. Temperature and humidity conditions: -10~ 40℃ and 30~70% RH.
2. Recommended products should be used within 6 months from the time of delivery.
3. The packaging material should be kept where no chlorine or sulfur exists in the air.

Transportation Conditions

1. Products should be handled with care to avoid damage or contamination from perspiration and skin oils.
2. The use of tweezers or vacuum pick up is strongly recommended for individual components.
3. Bulk handling should ensure that abrasion and mechanical shock are minimized.

9.EUT Photo

