

Photo 1

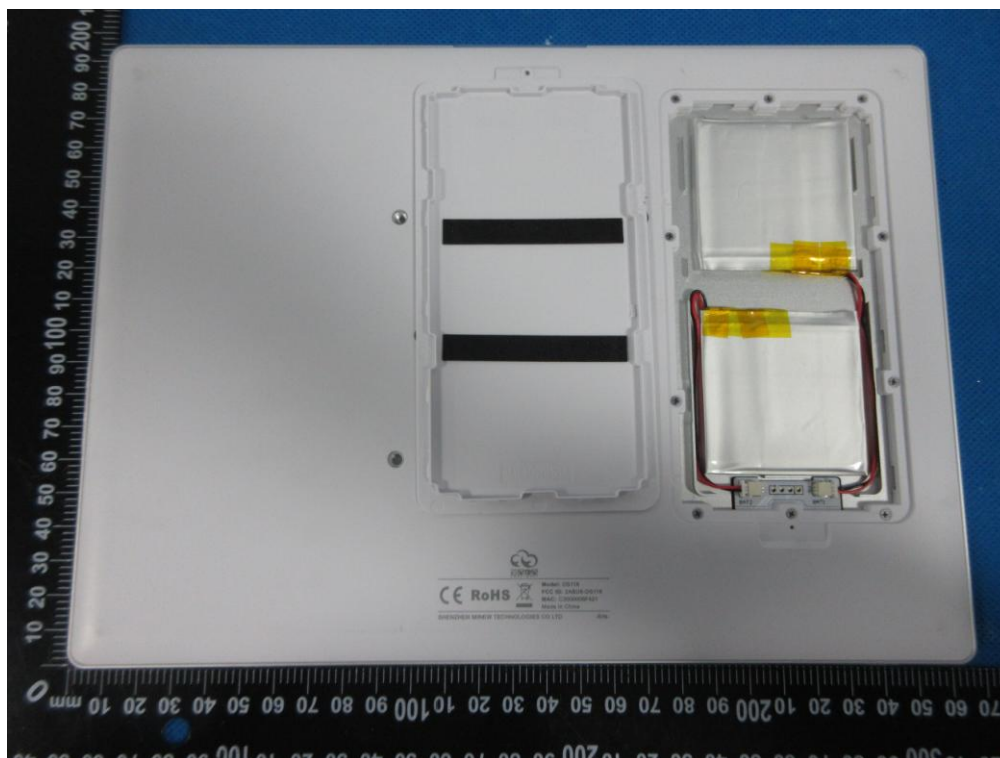


Photo 2

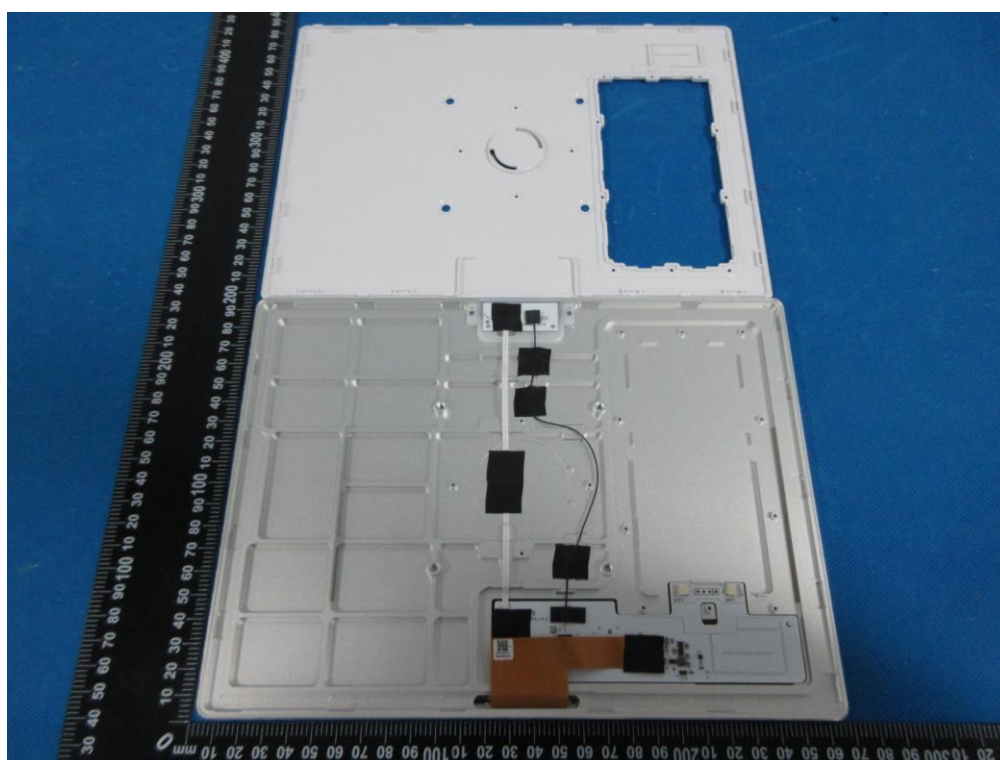


Photo 3

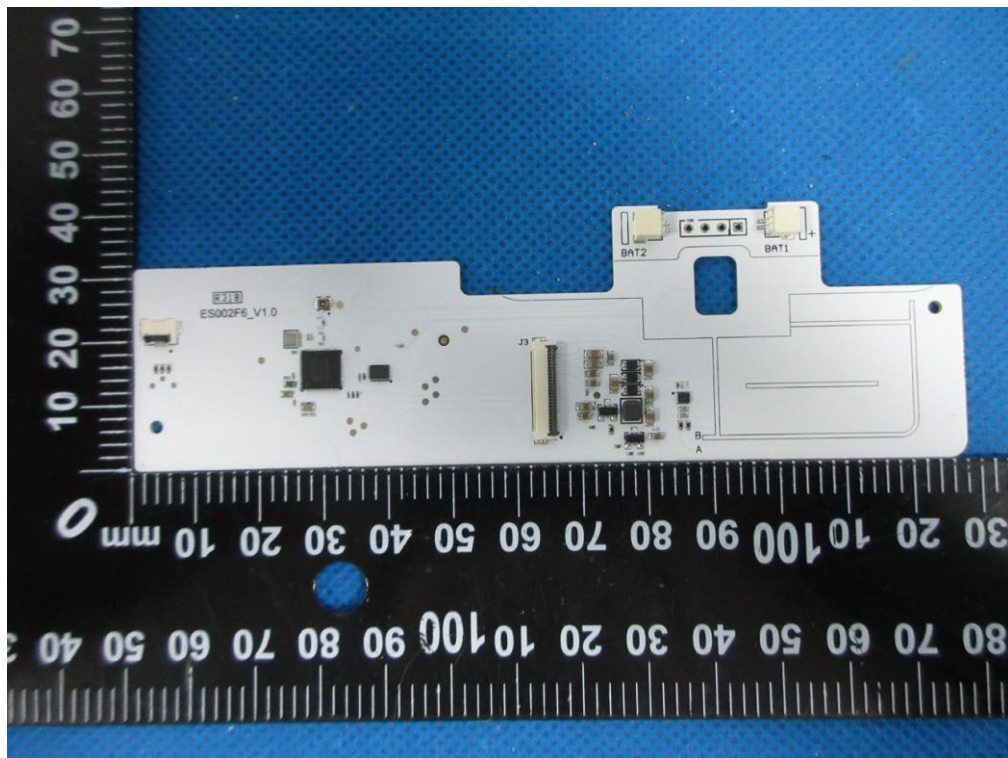


Photo 4

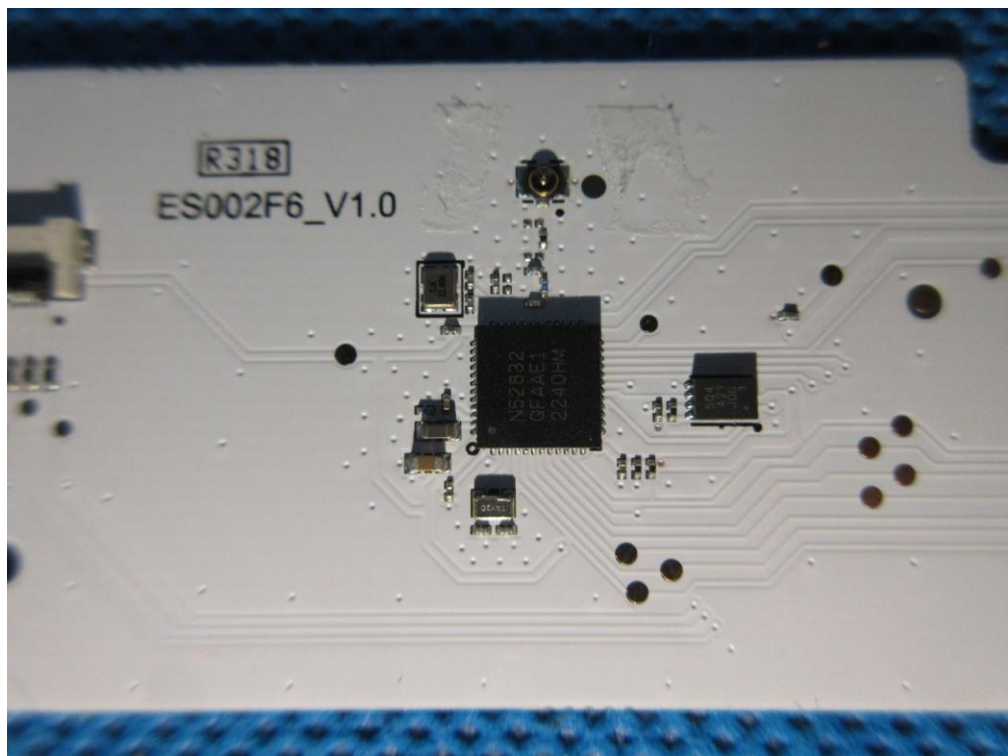


Photo 5

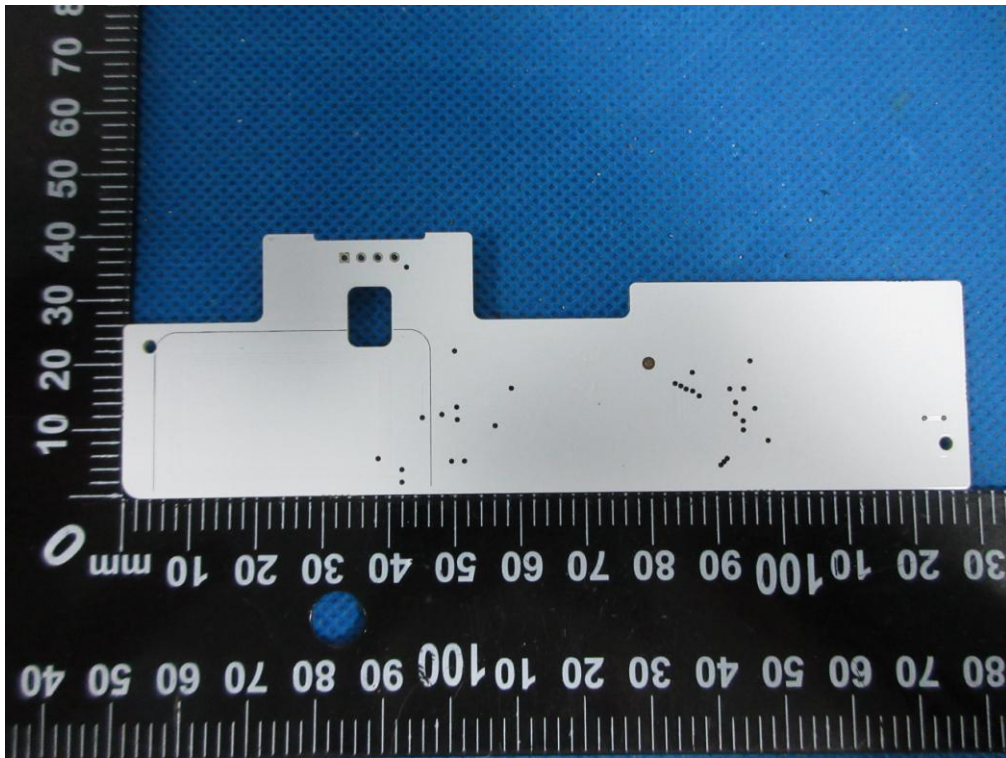


Photo 6

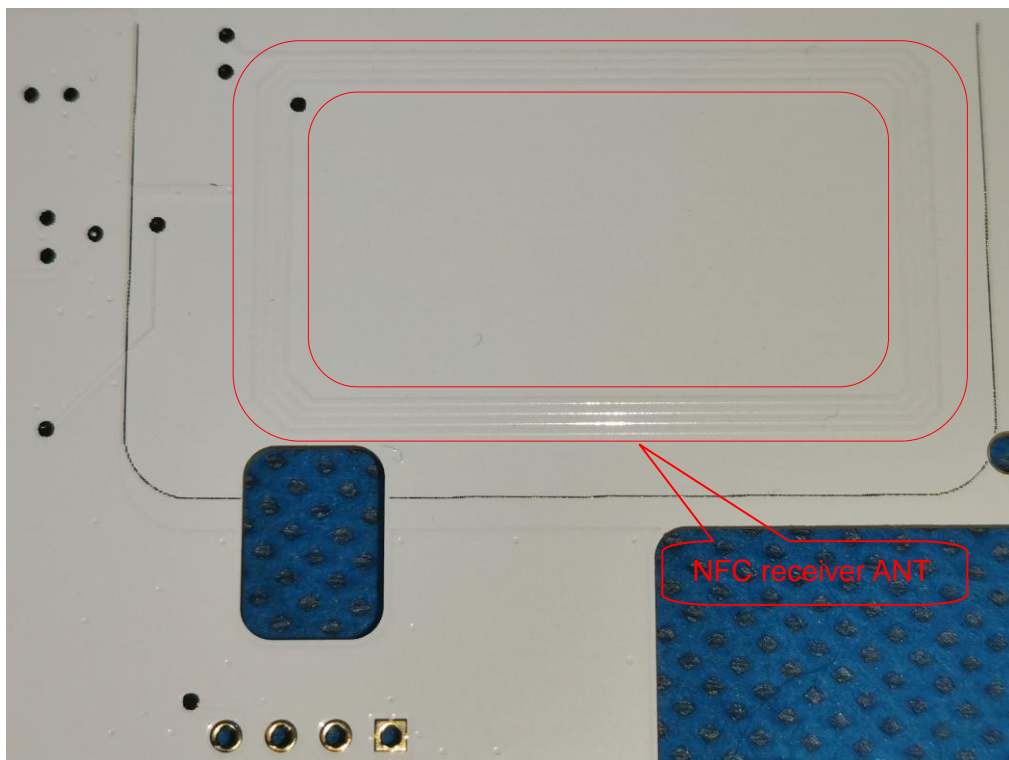




Photo 7

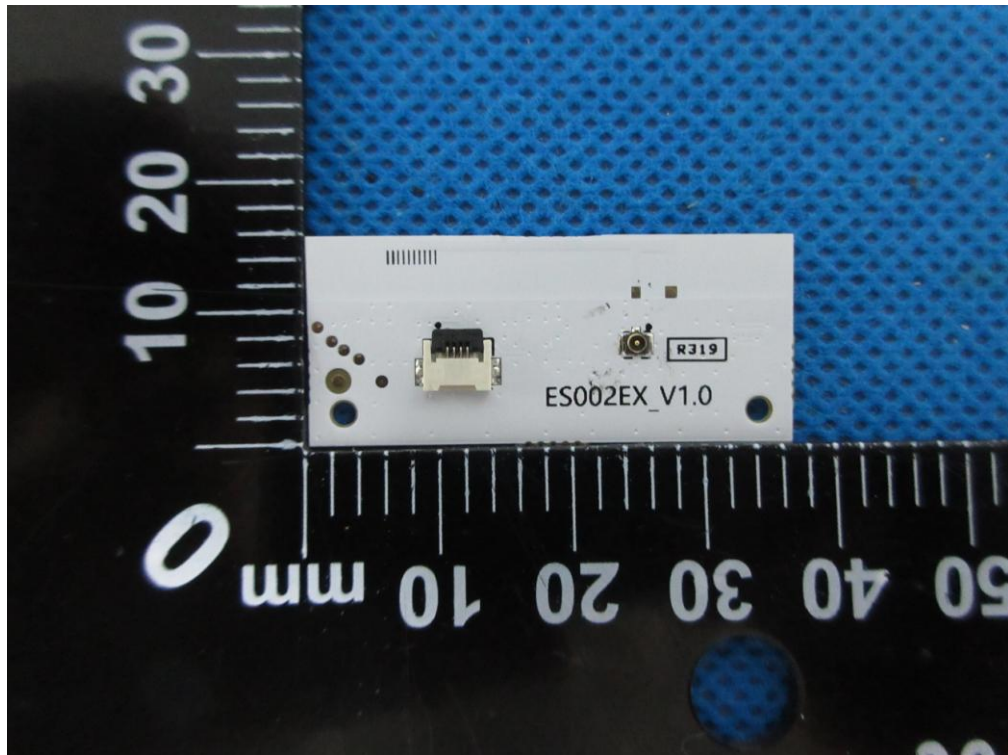


Photo 8

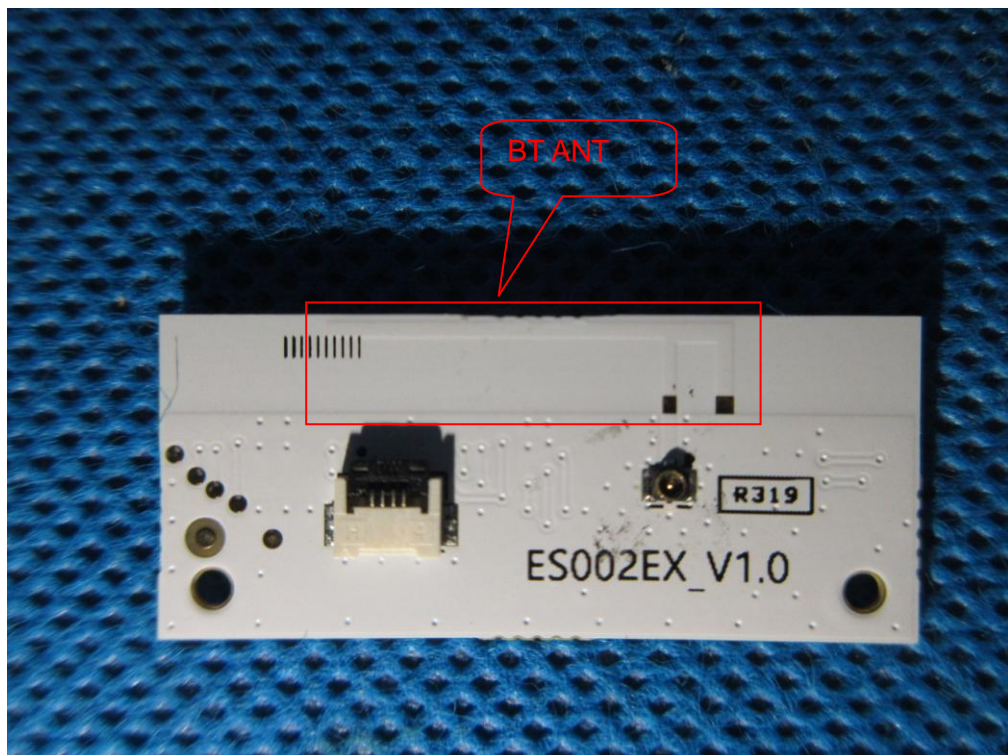


Photo 9

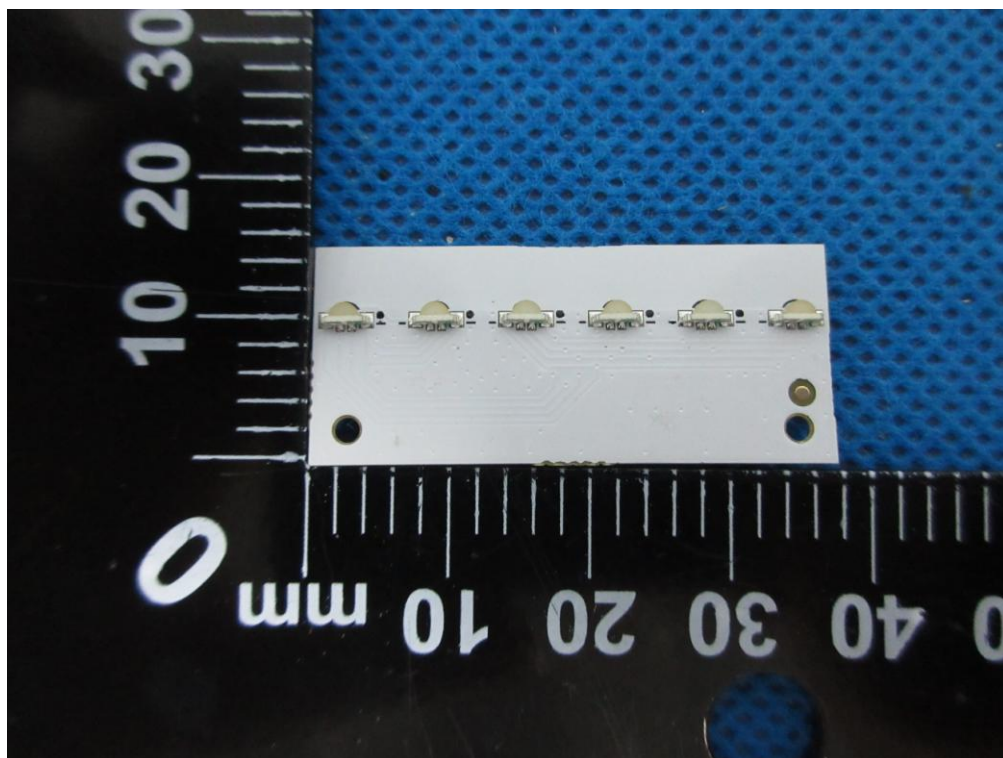


Photo 10

Two white, rectangular Li-ion batteries are shown side-by-side on a blue textured surface. Each battery has a yellow adhesive strip on its top edge. The left battery has a red and black wire connected to its top, which is terminated in a white two-pin connector. The right battery has a red and black wire connected to its top, which is terminated in a white two-pin connector. A black ruler is placed vertically to the left of the batteries, showing measurements in millimeters (0 to 100 mm) and centimeters (0 to 10 cm). The batteries are approximately 50 mm long and 20 mm wide. The text on the batteries is printed vertically: FRISO, CP305050, 3.0V, 280mAh.