

Phomemo



Label Printer

Quick Start Guide

CONTENT

Quick Start Video	01
Product Overview	02
Step 1: Get your printer started	03
Step 2: Label Loading	05
Step 3: Download the Driver	07
Step 4: Driver Installation	08
For macOS	
Step 4-1: macOS: Security & Privacy Setting	09
Step 4-2: macOS: Driver Installation	12
Step 4-3: macOS: Printer Setup	15
For Windows	
Step 4-1: Windows: Driver Installation	19
Step 4-2: Windows: Printer Setup	21
Introduction of Status Light	26
Introduction of Feed Button	27
Maintenance	28
Tips for Preparation	29
Safety Notices	30

Quick Start Video

Important Tip:

Please watch the short setup video for a fast and easy setup. Visit <https://phomemo.com/pages/pm246s> or watch the Getting Started Video on the USB driver attached



The Phomemo printer is a very capable printer. You can print barcodes, shipping labels, name badges, warehouse labels, food nutrition labels, amazon FBA labels and labels of all sizes with it. It prints without the need of ink or cartridges. It's the perfect partner for your business with its economical, reliable and high-efficient features.

Please take a short time to watch the setup video. It will guide you through the setup process step by step.

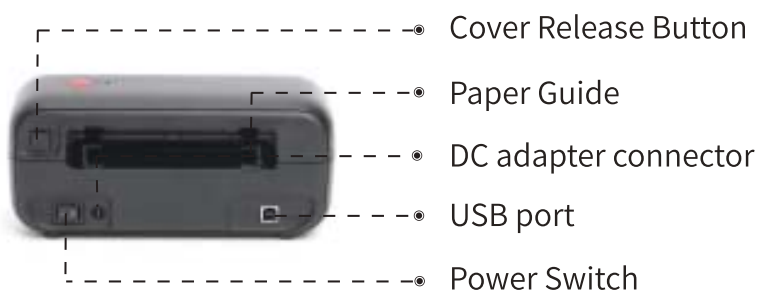
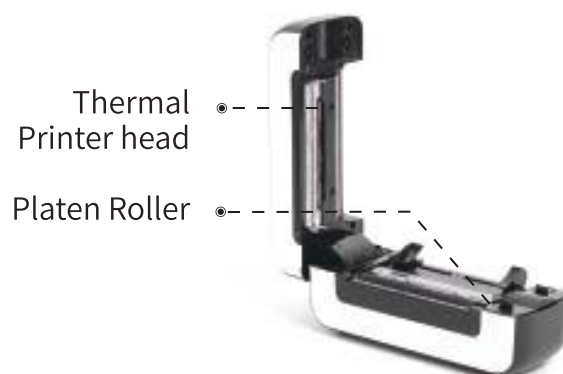
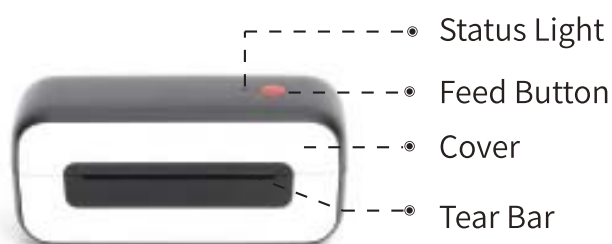


Product Overview

Package contents

Printer*1, Power Cord*1, Power Adapter*1, USB Cable*1, USB Driver*1, Quick Start Guide*1, Start Label*1, TC Adapter*1

Printer components



- > **Please take a moment to thoroughly read this user guide.**
Incorrect operation may result in damage to the printer or your physical injury.

STEP 1 Get the printer started



- 1.** Ensure that the printer is OFF. The power switch is switched to O. (I:On; O:Off)



- 2.** Attach the power cord to the adapter.



- 3.** Plug the adapter cable into Circular DC adapter connector of the printer.



4. Plug the power cord into socket.



5. Connect the USB cable to the printer.



6. Connect the other end of the USB cable to the computer.



7. Turn the printer ON with the power switch. (I:On; O:Off)

STEP 2 Label Loading

The Phomemo printer is capable of working with label width range from 1" to 4.6"(25.4 to 117 mm). To print on different labels correctly, the printer needs to identify your label size before it starts printing.

> To run the automatic label identification, please follow these steps:



1. Turn on the printer. (I:On; O:Off)



2. Adjust the paper guide to match the label size.



3. Insert label and ensure it is straight and smooth as shown.
Note: The print side should face up.



4. Make sure the label is automatically caught by the printer.



5. Press and hold Feed Button. After the blue light flashes 2 times, release the Feed Button.



6. The printer will move the label back and forth to learn the gap size and other properties of your label.

NOTE: Please run the label size identification every time you change your label. (See picture 5 & 6)

> Continue to Driver Installation

STEP 3 Download the Driver

Method 1:

Download the latest printer driver from the USB driver attached.



- 1. PM-246S--Getting Started Video
- 2. PM-246S--Driver
- 3. Labelife PC Label Editor For Win 7 & 8 & 10
- 4. PM-246S--Support & How-Tos & Platform Setup
- 5. PM-246S--Setting tool

Method 2:

Download the latest driver from
www.phomemo.com -> Shipping Label Printer -> PM-246S Printer Driver

Shipping Label Printer ▾

PM-246S Series

PM-246S Shipping Label Printer

PM-246S Printer Driver

PM-246S Printer Setup Guide

【Win】 Labelife Label Editor For PM-246S

STEP 4 Driver Installation

> Please run the downloaded software and follow the hints to complete the installation.



(Mac Driver Installer)



(Win Driver Installer)

Note: Before the installation, please ensure the printer is connected and turned on!

▶ **If the installation is not successful, please contact us.**

TEL: +1 855 957 5321 (US ONLY)

Service time: Mon-Fri 9AM-5PM (US EST)

Email: support@phomemo.com

WhatsApp: +86 13928088284 / +86 15338193665

Skype : **Phomemo Team-Jessie / Phomemo Team-Helen**

Contact us via live chat or WhatsApp by scanning the QR codes below:

For more videos, please visit:

www.youtube.com

- Search for "Phomemo" and go to the home page
- Search for the printer model you purchased (i.e PM-246S)
- Find the tutorial videos for an easy setup



Phomemo Team-Jessie



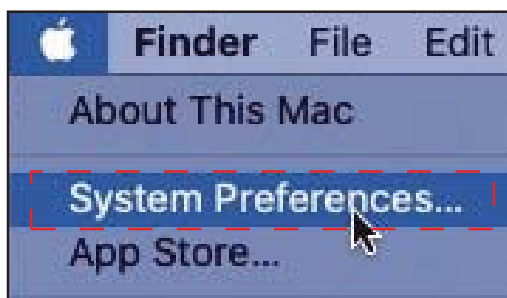
Phomemo Team-Helen

STEP 4.1 Security & Privacy Setting for macOS

- (1) Click on the "pkg" installer to begin.
- (2) If the driver can not be opened, please give permission to it first. Click "OK" and follow the steps below to allow the macOS system to process the installation.



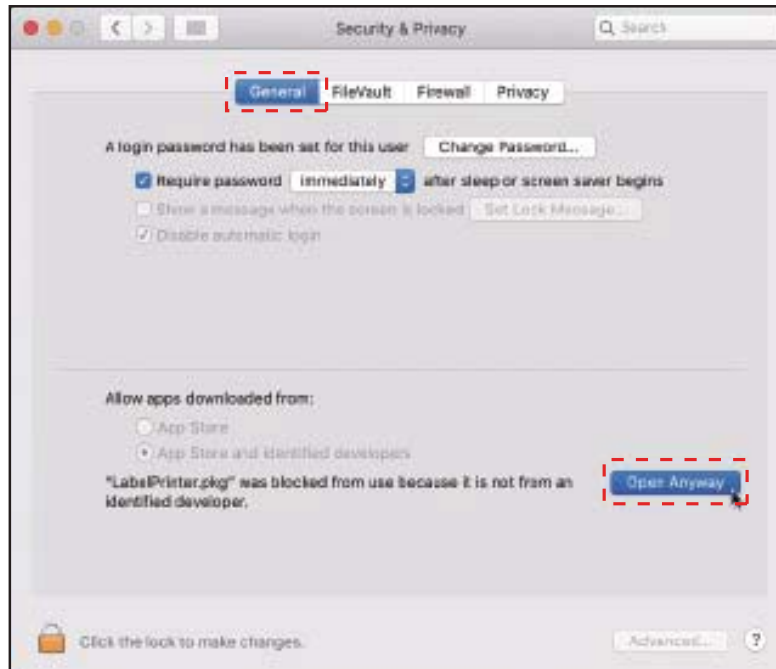
- (3) Click "🍏" and go to "System Preferences".



- (4) Select "Security&Privacy".



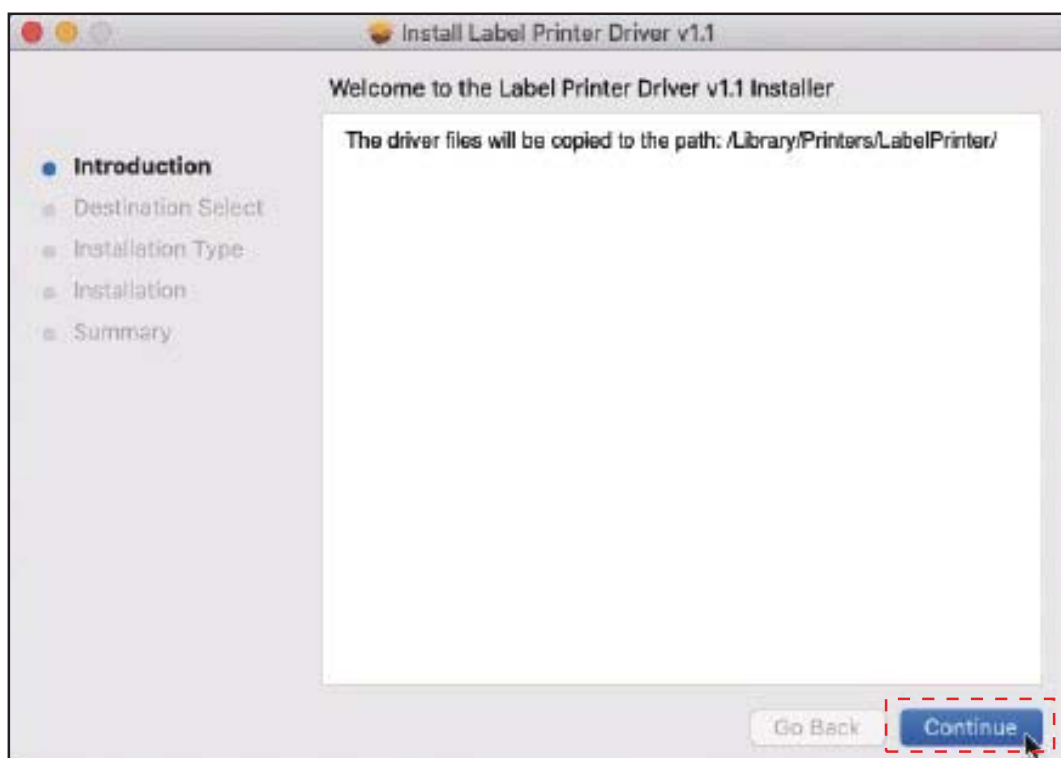
(5) Under "General", click "Open Anyway" to set up.



(6) Input the password of your Mac. Then click "Modify Settings".
Note: If you didn't set a password, please skip this step.

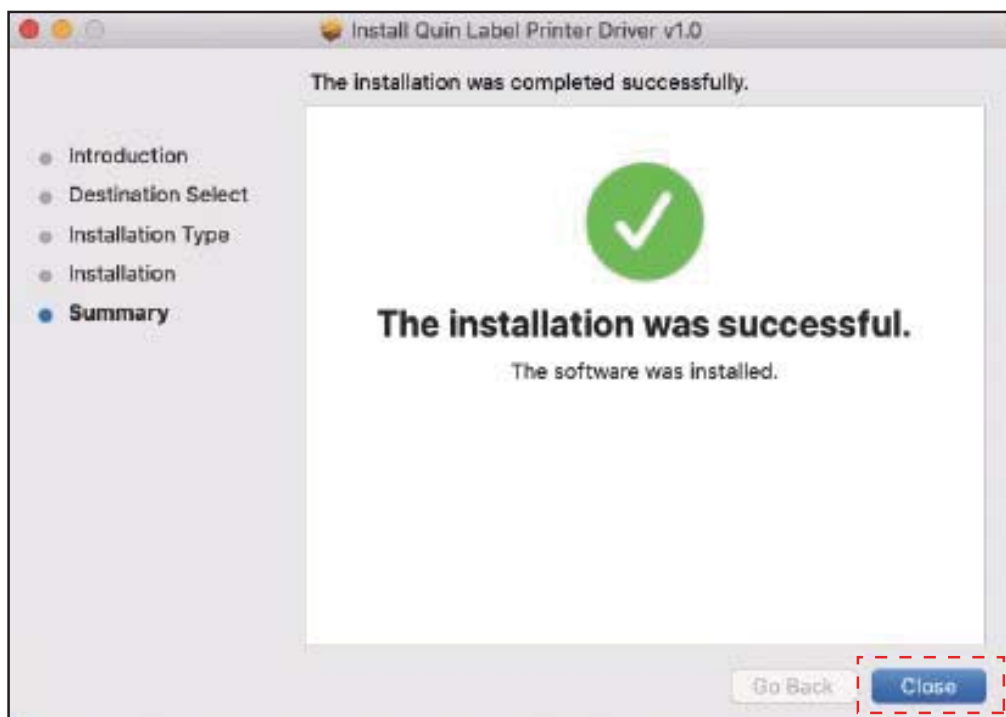


(7) Click "Open" and continue to install the driver.

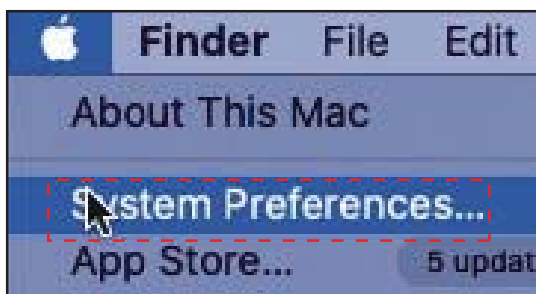


STEP 4.2 Driver Installation for macOS

- (1) Follow the installation steps until you receive the "Installation was successful" message.



- (2) Click "" and go to "System Preferences".



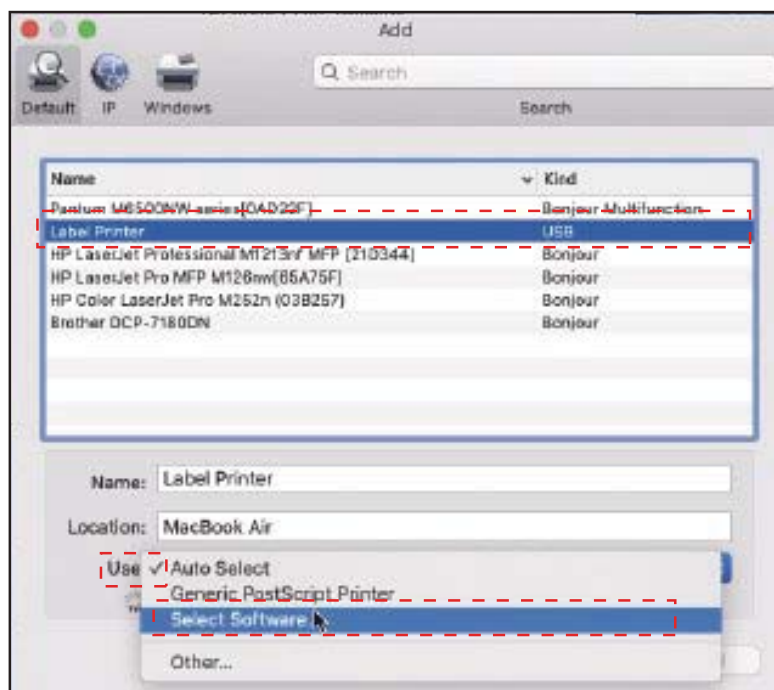
- (3) Select "Printer & Scanners".



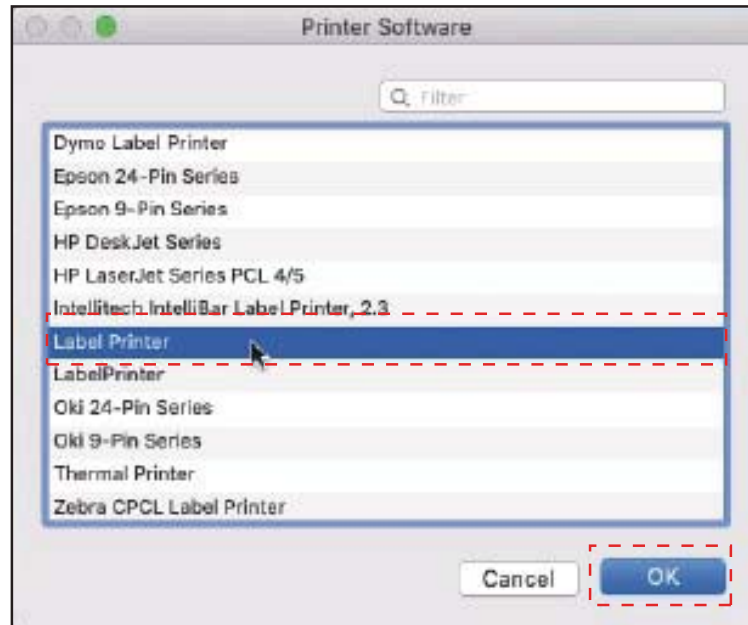
(4) Click "+" to add a printer .



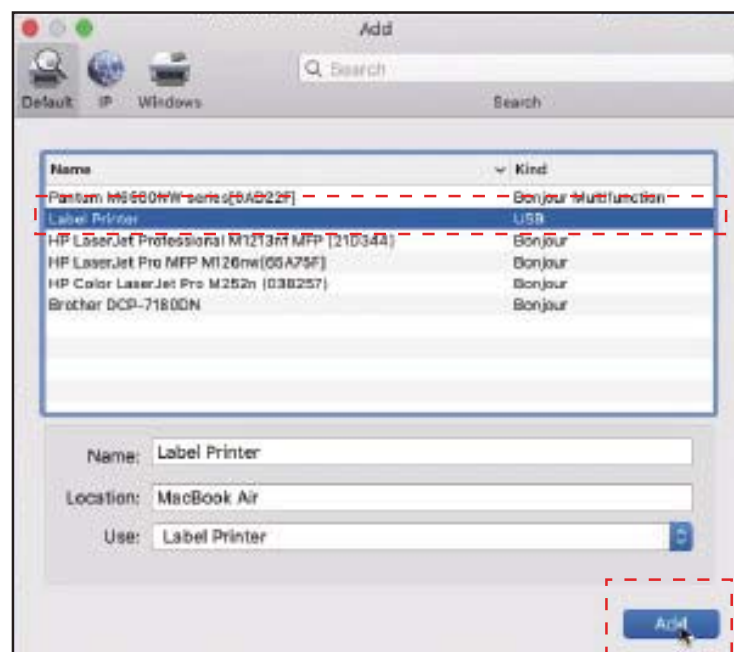
(5) Select "Label Printer" -> Click "Select Software" under "Use".



(6) Select "Label Printer" and click "OK".

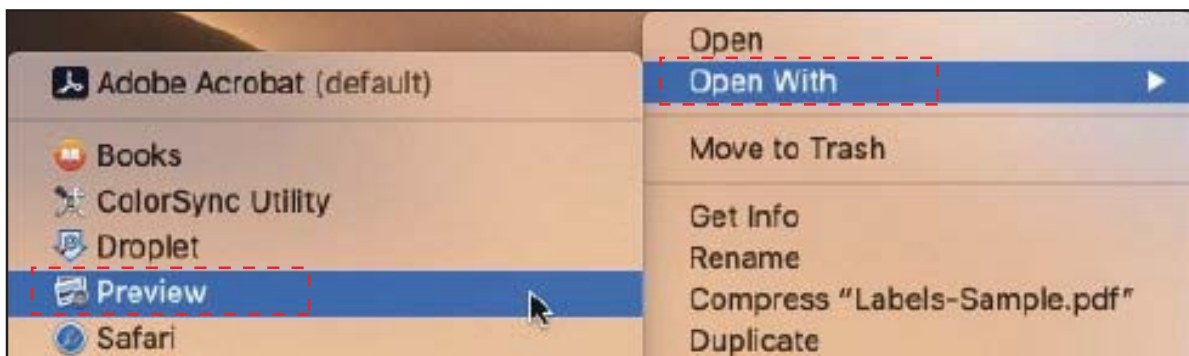


(7) Click "Add".



STEP 4.3 Printer Setup for macOS

(1) Print a sample label: Open a desired file (e.g. a PDF) through Preview .



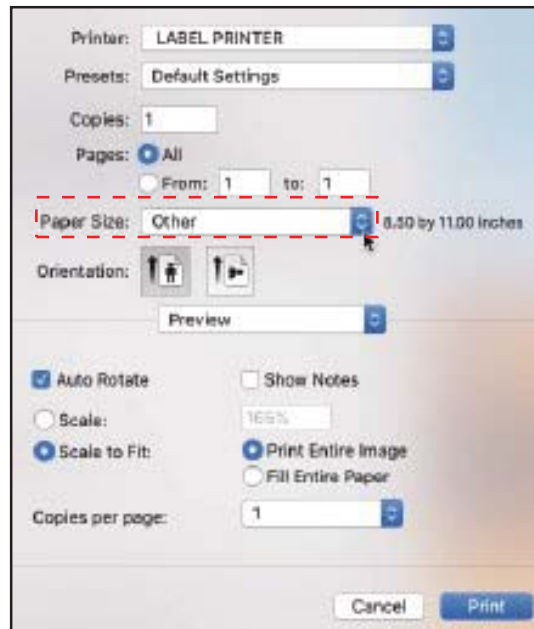
(2) Click "File" and choose "Print".



(3) Select "Show Details".

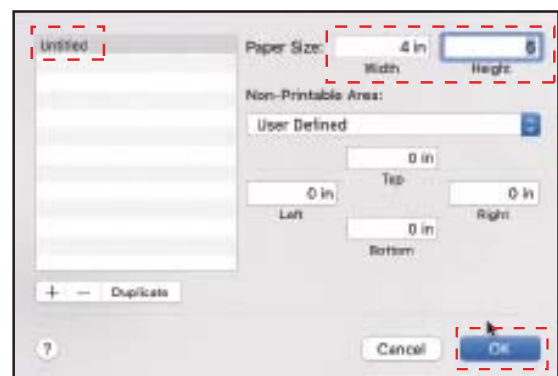
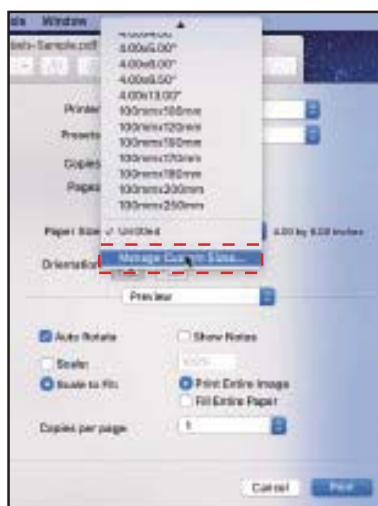


(4) Choose a paper size from "Paper Size".

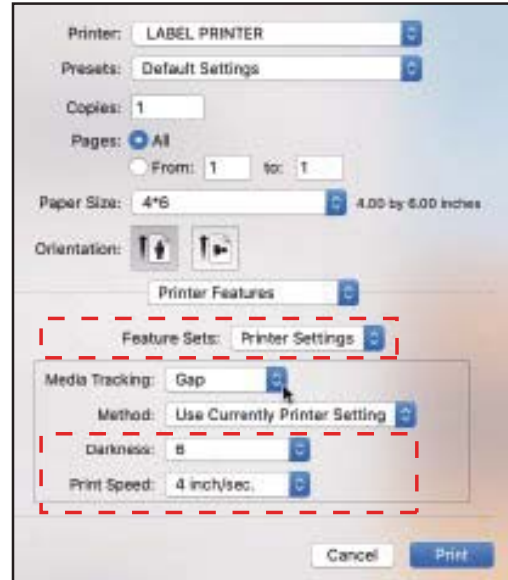
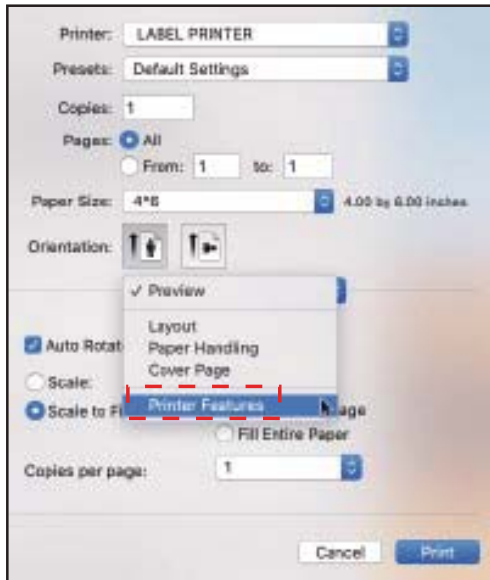


① If there is no suitable label size for you, please click "Manage Custom Sizes" to add the size.

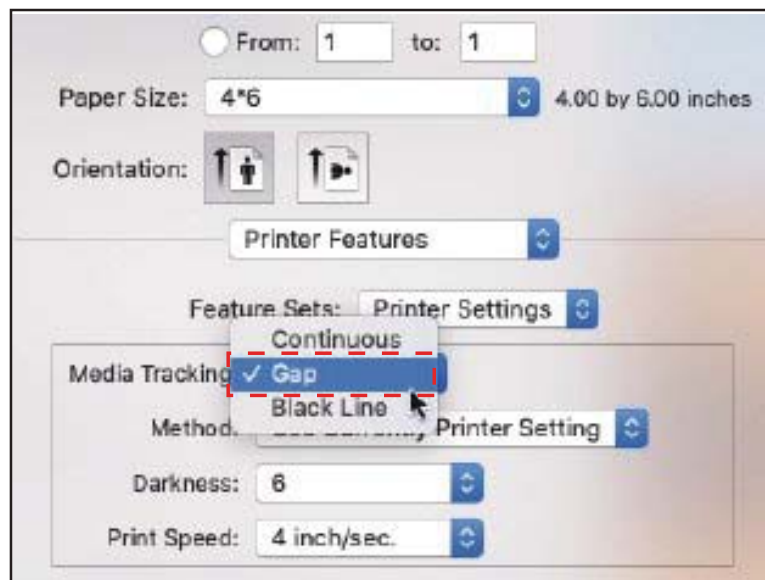
② Input width and height, then click "OK".



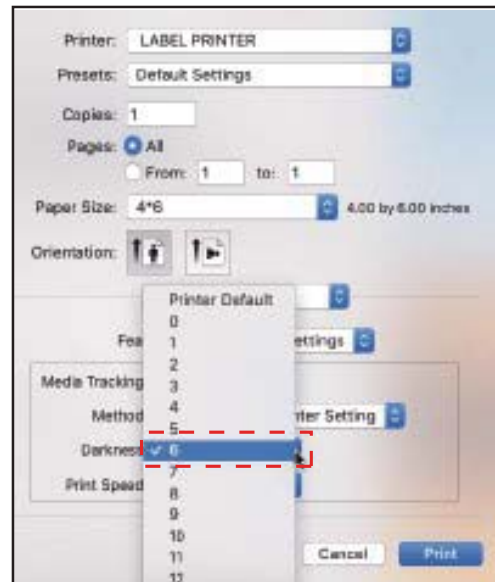
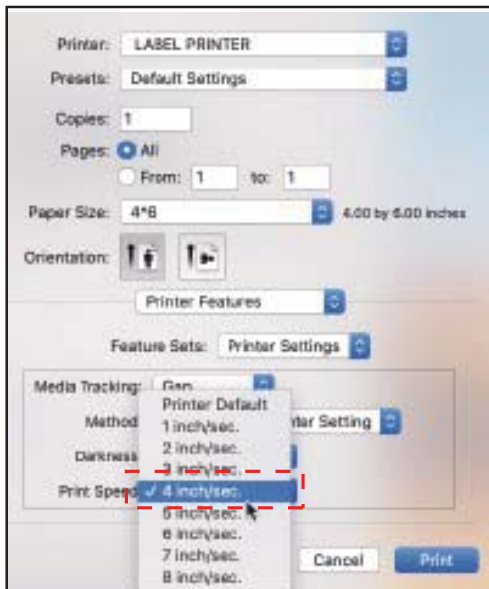
(5) Select "Printer Features" in "Preview", you can set up the printer properties here, such as "Media Tracking", "Darkness" and "Print speed".



① Select paper type in "Media Tracking". Choose among "Continuous", "Gap" or "Black Line".



- ② You can change the Printing Speed and the Darkness of your printing (Larger number means higher Darkness).



- (6) After setup, click "Print".



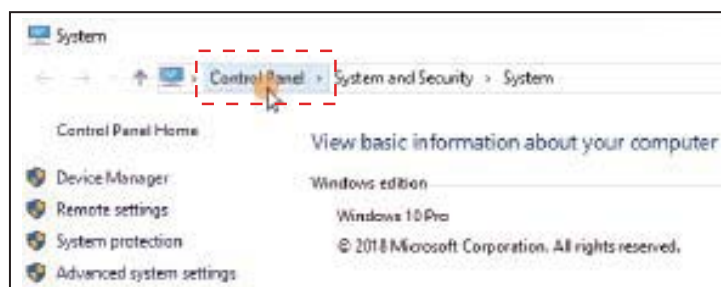
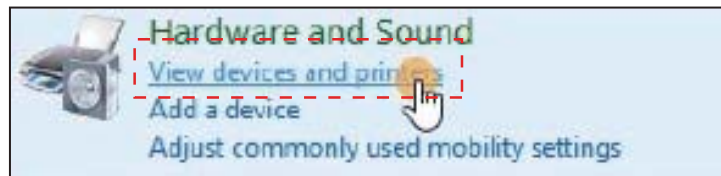
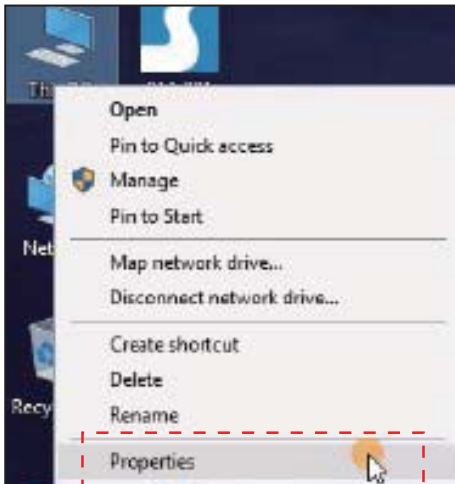
STEP 4.1 Driver Installation for Windows

(1) Double click on the installer to begin. Follow the installation steps until finish.

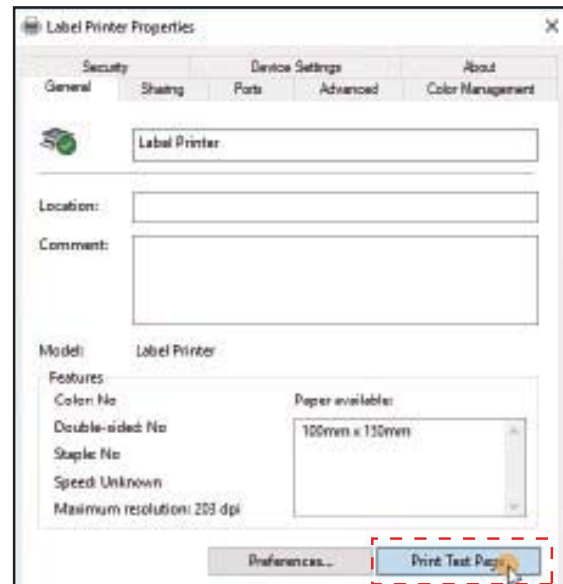
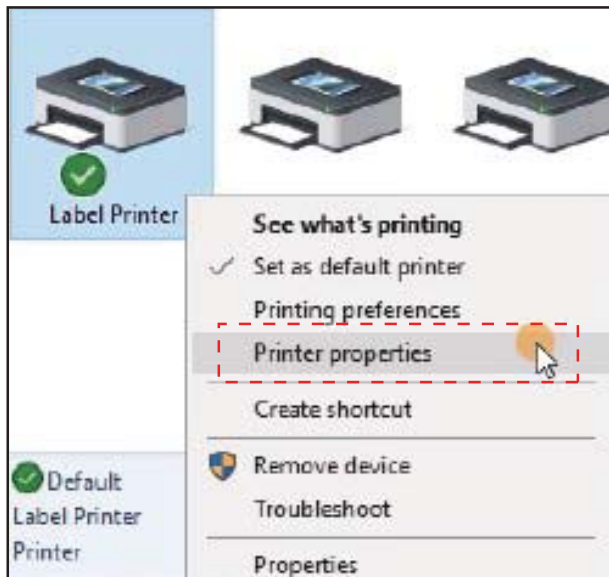


(2) To check if the printer is connected successfully:

- ① Right click on "This PC", choose "Properties", then click on "Control panel" -> "Devices and Printers".



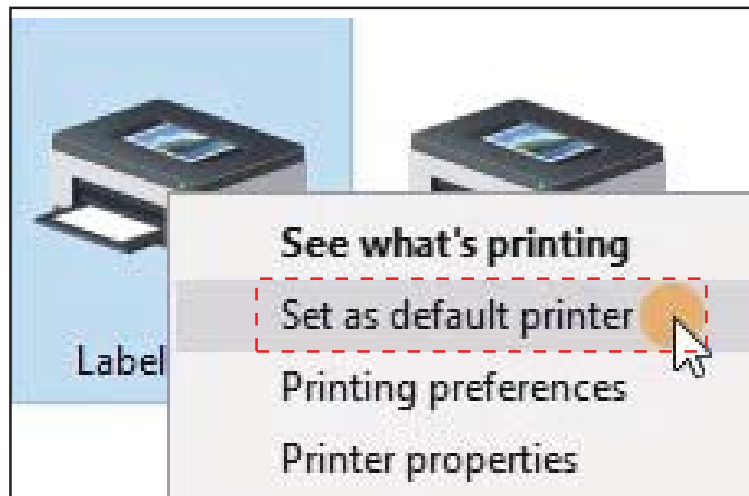
- ② Right click on "Label Printer" -> "Printer Properties" -> Click on "Print Test Page".



STEP 4.2 Printer Setup for Windows

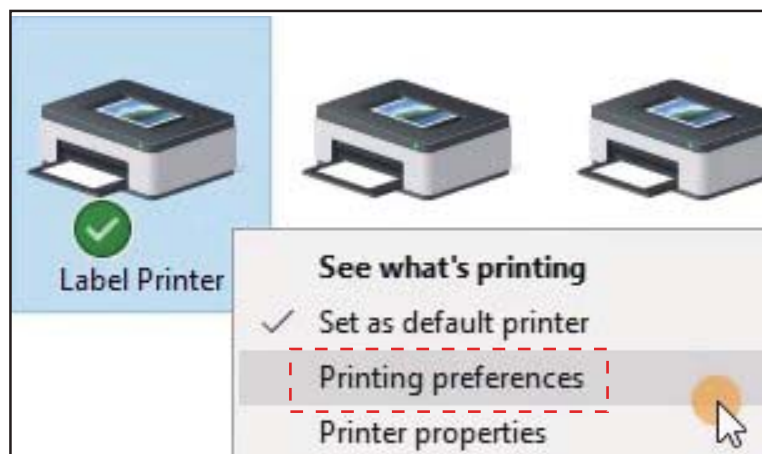
(1) Set as default printer

Right click on "Label Printer" -> "Set as default printer".

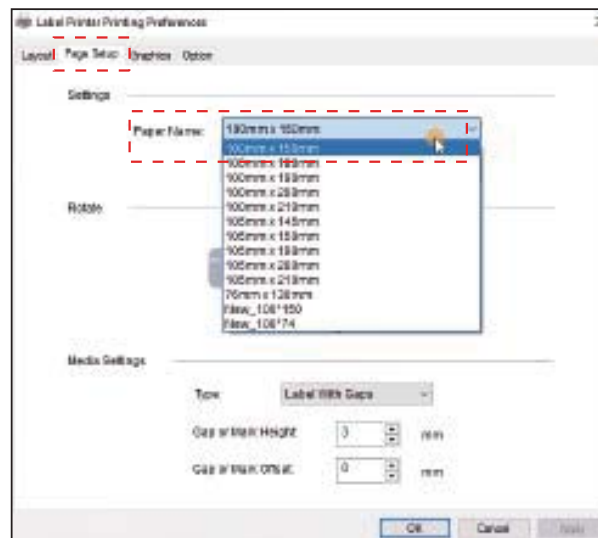


(2) Select a paper type

① Right click on "Label Printer" -> choose "Printer Preferences" .



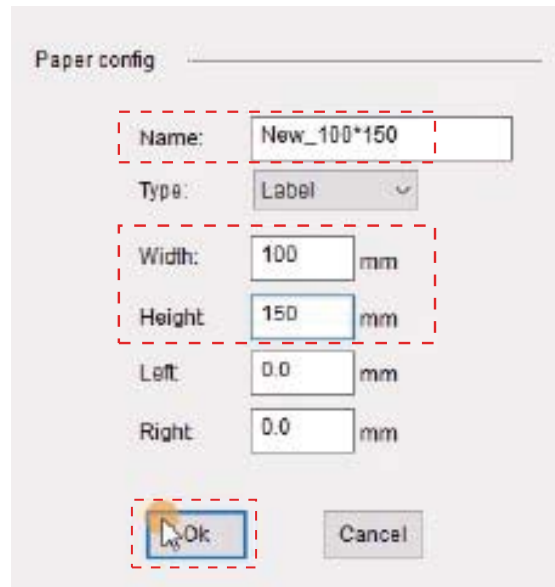
- ② Go to the "Page Setup".
You can choose the size you need in "Paper Name".



- ③ If there is no suitable label size for you, please click on "New" to create the needed size.



- ④ Change Paper name and input the width and the height, click "OK".



The 'Paper config' dialog box is shown with the following fields and values:

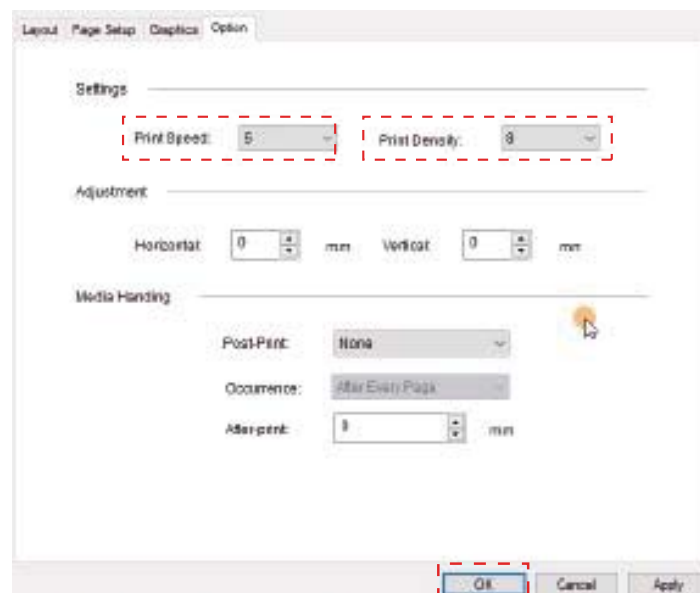
Field	Value	Unit
Name	New_100*150	
Type	Label	
Width	100	mm
Height	150	mm
Left	0.0	mm
Right	0.0	mm

The 'Ok' button is highlighted with a red dashed box, and a mouse cursor is pointing at it. The 'Cancel' button is also visible.

(3) Set up Print speed and Darkness

Go to "Option"

You can change the printing speed and the Darkness of your printer (Larger number means higher Darkness) and click "OK".



The 'Option' dialog box is shown with the following settings:

Section	Field	Value
Settings	Print Speed	5
	Print Density	8
Adjustment	Horizontal	0 mm
	Vertical	0 mm
Media Handling	Post-Print	None
	Occurrence	After Every Page
	After print	0 min

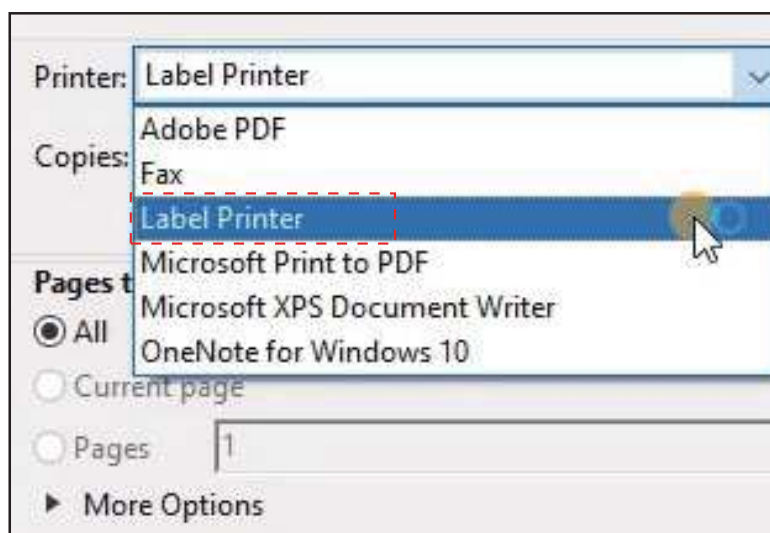
The 'Ok' button is highlighted with a red dashed box, and a mouse cursor is pointing at it. The 'Cancel' and 'Apply' buttons are also visible.

(4) Print a sample label: Open a desired file (e.g. a PDF).

① Click on "  "



② Select the printer "Label Printer".



③ Preview and check the print size, then click "Print".



LED STATUS LIGHT



Light	Printer status
Solid blue	Standby and Ready
Blue flashing slowly	Label jams or label detection error
Blue flashing quickly	Wrong media tracking
Solid red	Printer head is over-heated
Red flashing slowly	Paper shortage
Red flashing quickly	Cover is not closed
Solid purple	Printing
Purple flashing quickly	Pause printing

FEED BUTTON



Desired Action	Execution
Skip a label	When the printer is standby and ready (not in the middle of printing), press the Feed Button once.
Restore factory setting	Insert the label, ensure it is straight and smooth. When the printer is standby and ready, press and hold the Feed Button for about 10 seconds while the blue light flashes 4 times, then release the Feed Button.
Run the automatic label identification (for labels with black marks)	Insert the label, ensure it is straight and smooth. When the printer is standby and ready, press and hold the Feed Button for about 8 seconds while the blue light flashes 3 times, then release the Feed Button.
Run the automatic label identification (for labels with gaps)	Insert the label, ensure it is straight and smooth. When the printer is standby and ready, press and hold the Feed Button for about 6 seconds while the blue light flashes 2 times, then release the Feed Button.
Print test page	Insert the label, ensure it is straight and smooth. When the printer is standby and ready, press and hold the Feed Button for about 4 seconds while the blue light flashes 1 times, then release the Feed Button.
Pause printing	When the printer is printing, press the Feed Button once.
Resume printing	When the printer pauses printing, press the Feed Button once to resume printing.
Clear printing data	When the printer pauses printing, press the Feed Button twice to clear the printing data.

Maintenance

► Printer head Cleaning Steps

1. **Turn the printer off** , remove the power cord and open the cover.
(See picture 1)
2. **Wait until the Printer head cools down** . (The printer head may be very hot after printing)
3. Completely **clean the Printer head using an alcohol swap (NOT with WATER)**.
(See picture 2)
4. Wait **until the alcohol has completely vaporized**, then close the cover.
5. Connect the power cord and **print a test page** to check if it is clean.



Picture 1



Picture 2

NOTICE

Ensure power is off when performing maintenance.

Do not touch or scratch the printer head, the roller or the sensors.

Tips for Preparation

1. **Avoid using poor quality labels** as they may damage the printer.
2. **Clean the printer head** regularly.
3. Connect the Printer to the **same USB port on your computer every time.** This can avoid creating duplicate copies on the printer.
4. **.If paper is jammed**, please refer to "Printer head Cleaning Steps" in "Maintenance".

Safety Notices

1. Do not bend the power cord excessively or place objects on the cord.
2. Keep the printer **out of reach of children**.
3. Use only approved accessories and **do not try to disassemble or repair the unit by yourself**.
4. **Keep the printer away from water** and other objects that could penetrate the components.
5. **Unplug the printer when it is not in use for long periods**.
6. **Do not use the printer if you find any irregularities** as these could result in fire or electrocution.
7. **Do not touch the printer head**. The printer head can be over-heated after printing.

FCC STATEMENT

1. This device complies with Part 15 of the FCC Rules. Operation is subject to the following two conditions: (1) This device may not cause harmful interference, and (2) This device must accept any interference received, including interference that may cause undesired operation.
2. Changes or modifications not expressly approved by the party responsible for compliance could void the user's authority to operate the equipment.

NOTE: This equipment has been tested and found to comply with the limits for a Class B digital device, pursuant to Part 15 of the FCC Rules. These limits are designed to provide reasonable protection against harmful interference in a residential installation. This equipment generates uses and can radiate radio frequency energy and, if not installed and used in accordance with the instructions, may cause harmful interference to radio communications. However, there is no guarantee that interference will not occur in a particular installation. If this equipment does cause harmful interference to radio or television reception, which can be determined by turning the equipment off and on, the user is encouraged to try to correct the interference by one or more of the following measures:

Reorient or relocate the receiving antenna.

Increase the separation between the equipment and receiver.

Connect the equipment into an outlet on a circuit different from that to which the receiver is connected.

Consult the dealer or an experienced radio/TV technician for help.

FCC RF exposure statement:

To maintain compliance with FCC's RF Exposure guidelines, This equipment should be installed and operated with minimum distance between 20cm the radiator your body.

FCC ID: 2ASRB-B246D

Phomemo is a registered trademark of Quin Technology Co.,Ltd
©2021 Quin Technology Co.,Ltd.All Rights Reserved.