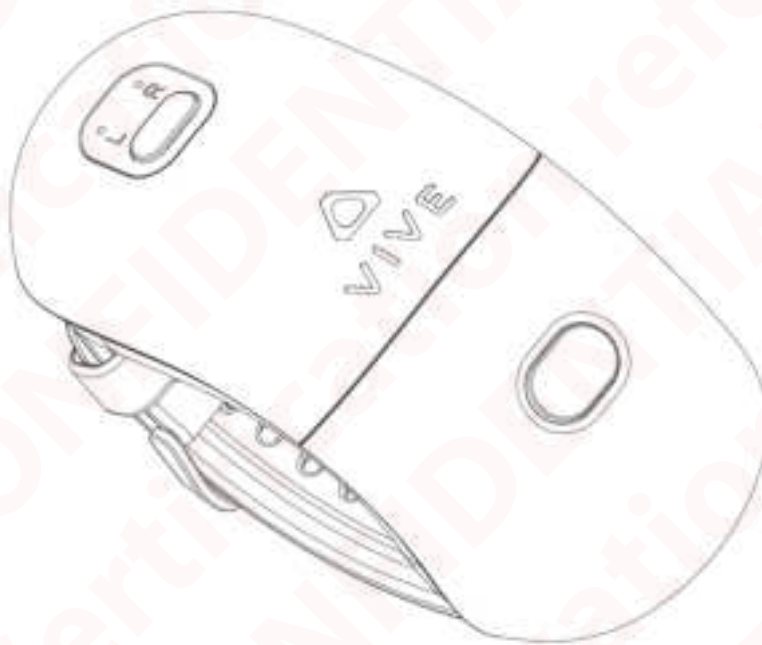




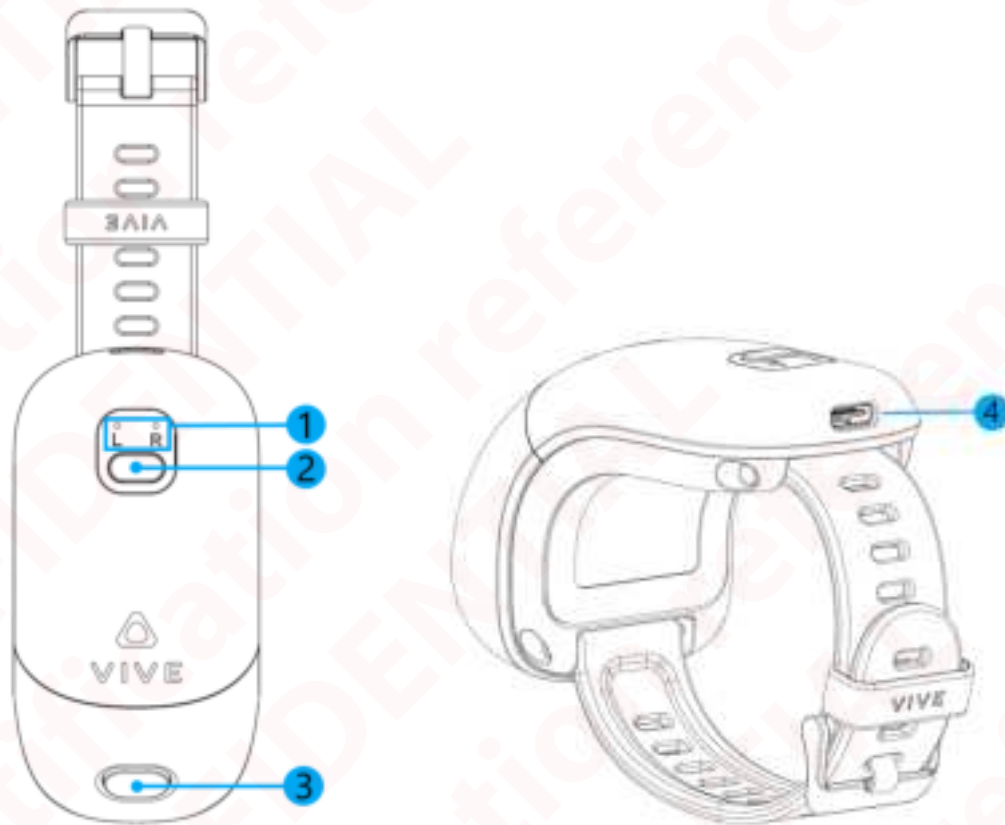
2QB9100



Inside the box

- 2QB9100
- USB-C charging cable

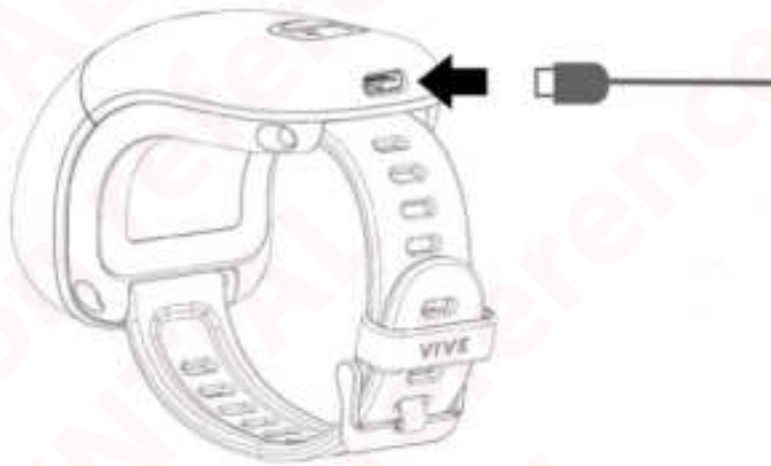
Components



- 1 LEDs
- 2 Power button
- 3 App button
- 4 USB-C charging port

Charging the 2QB9100

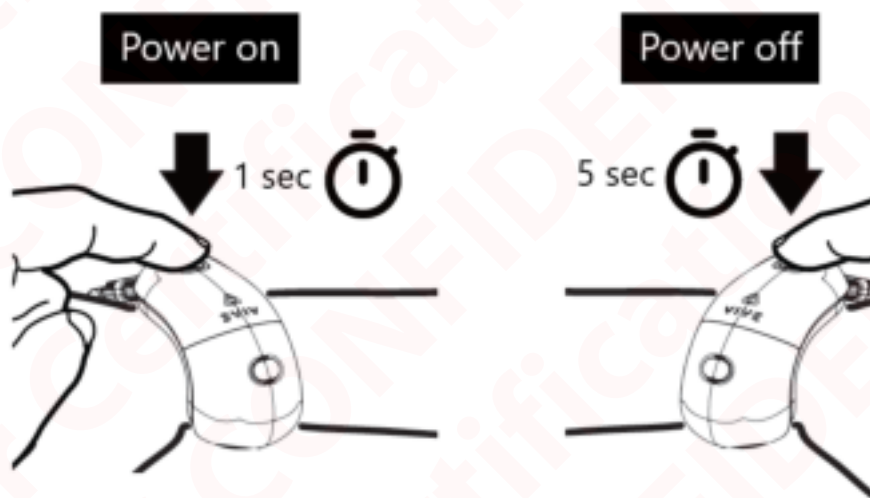
Connect one end of the USB-C charging cable to the 2QB9100 and the other end to a power source.



The status LED will change from amber to blue when the 2QB9100 is fully charged.

Powering the 2QB9100 on and off

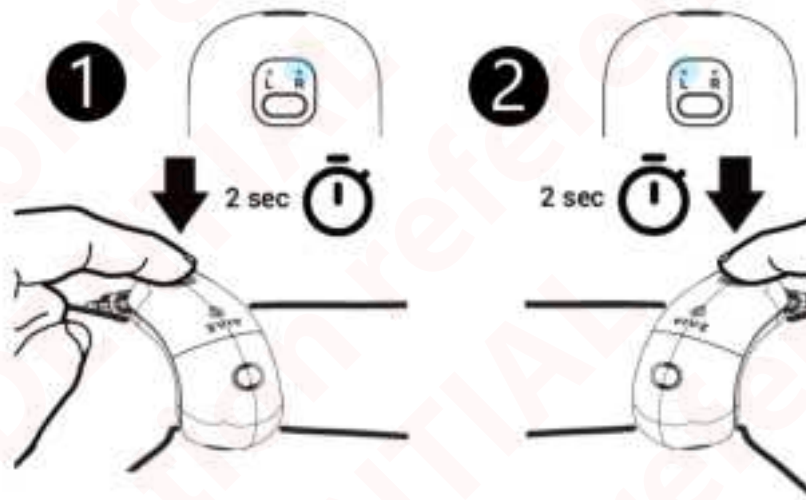
- To power on, press and hold the Power button for 1 second.
- To power off, press and hold the Power button for 5 seconds.



Pairing the 2QB9100 with VIVE Focus 3

1. In VIVE Focus 3, go to **Settings > Connectivity > Controllers**.
2. Select **Pair new** under each controller.
 - When prompted to pair, press and hold the power button for 2 seconds. The LED will start blinking blue.

The first 2QB9100 will be paired with your right hand, and the second 2QB9100 will be paired with your left hand.



LEDs

The left and right LEDs indicate the status of the 2QB9100 and which hand it's paired with. The left or right LED lights up when the 2QB9100 is paired with the left or right hand, respectively.