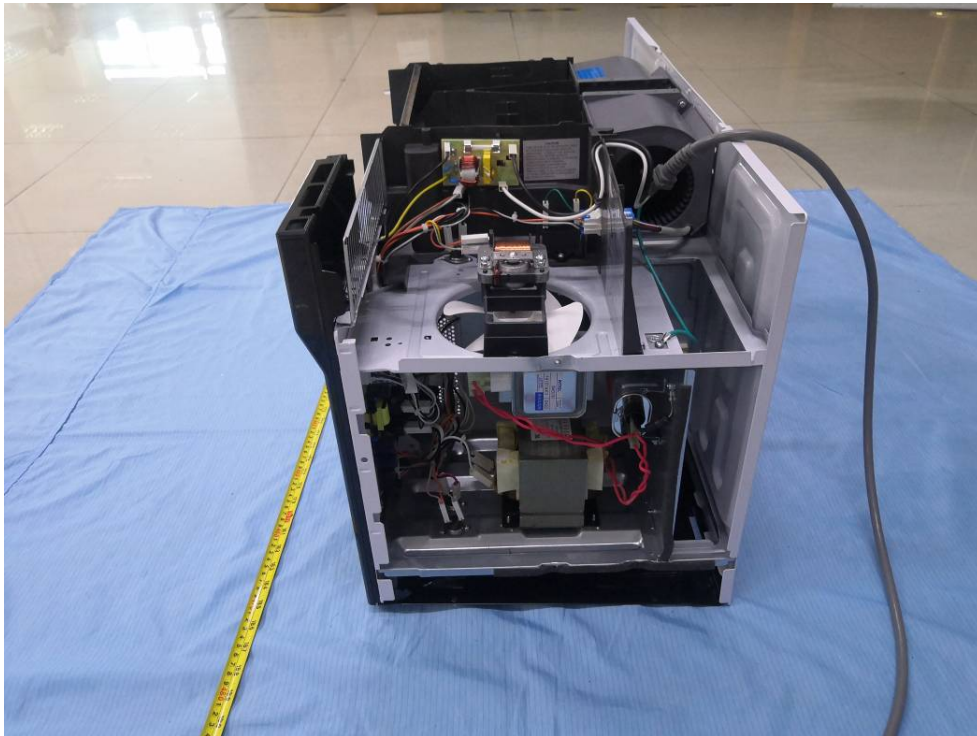


EXHIBIT C - EUT INTERNAL PHOTOGRAPHS

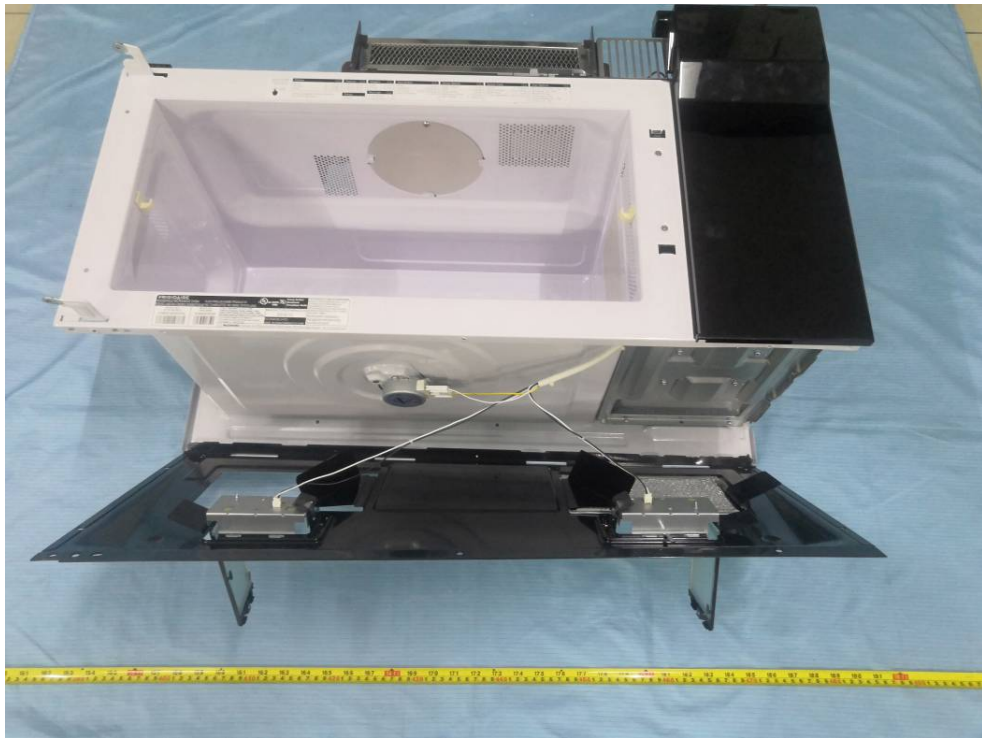
Uncovered view1



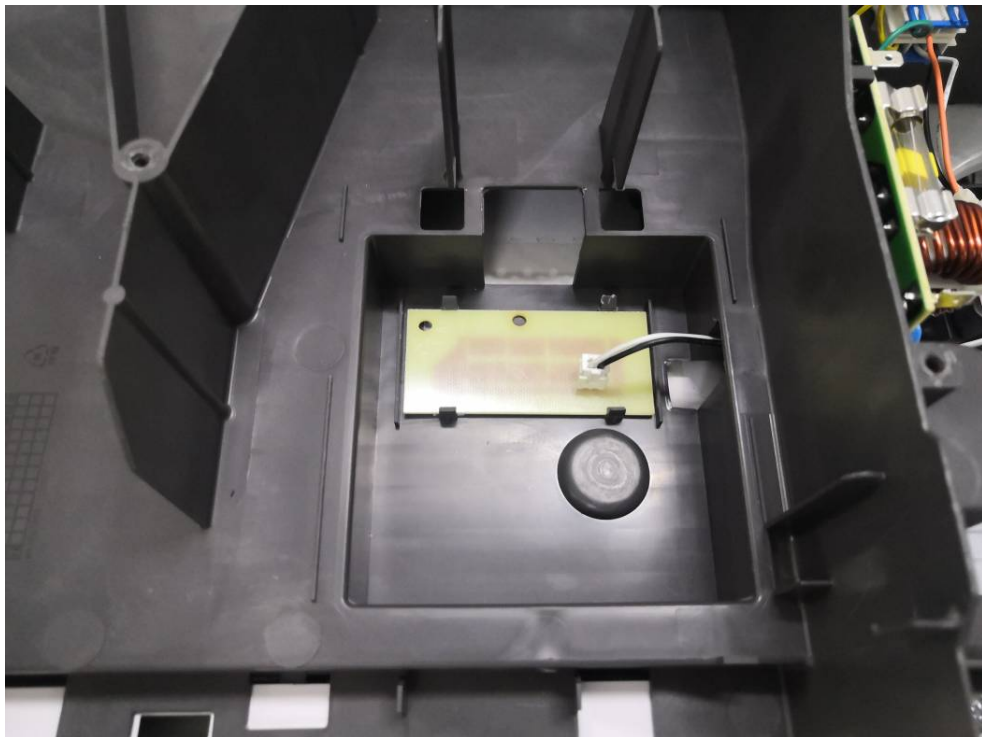
Uncovered view2



Bottom uncovered view



Top LED uncovered view



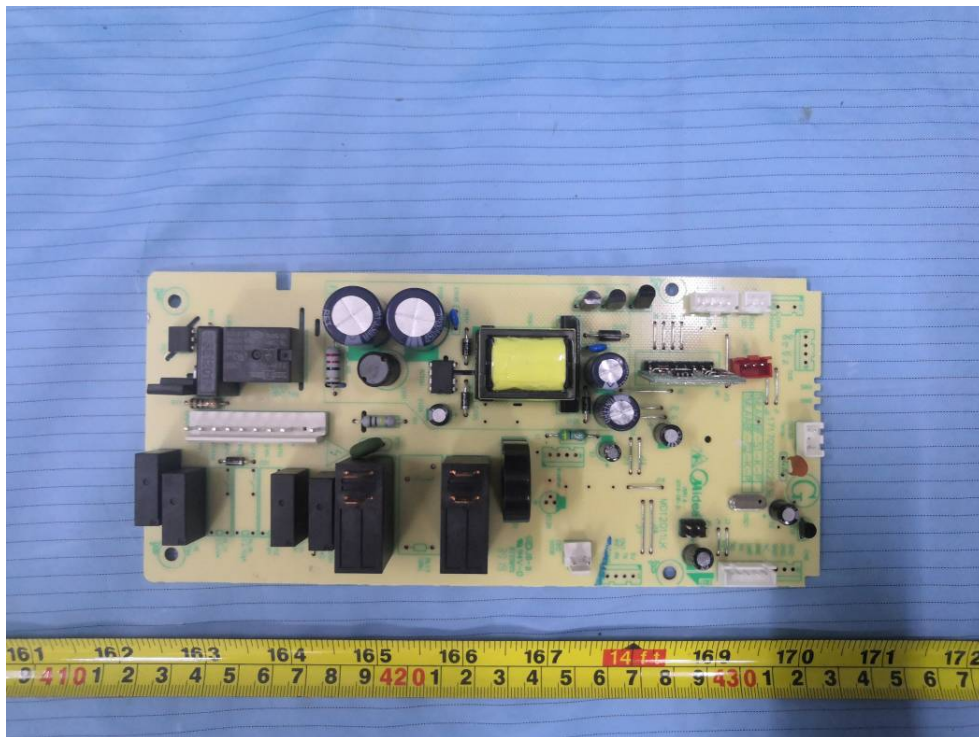
Bottom left LED uncovered view



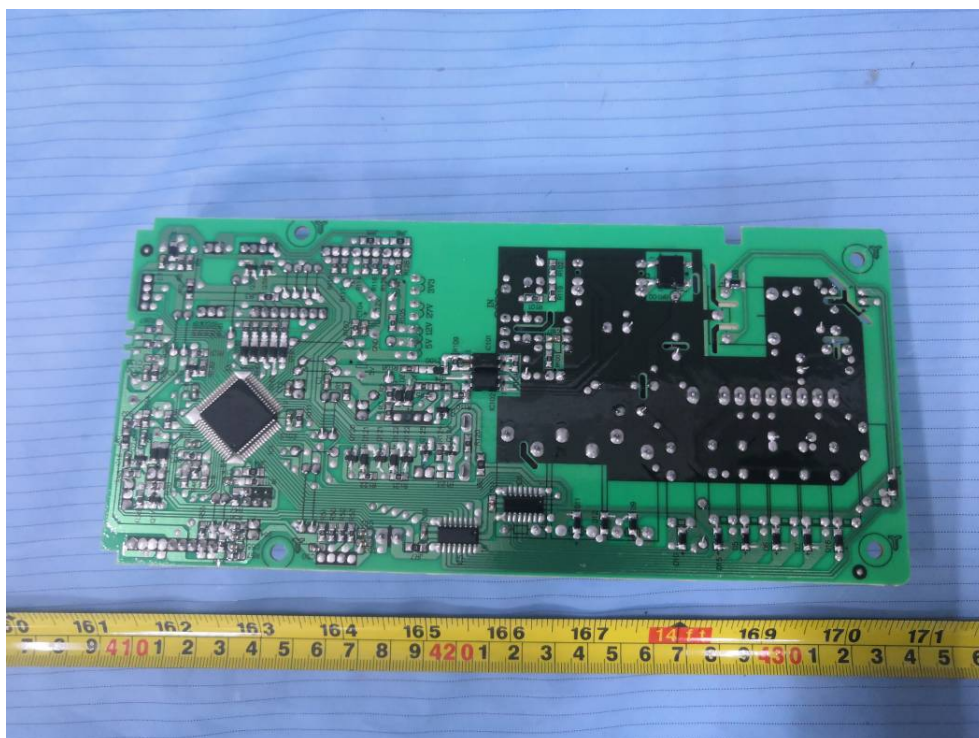
Bottom right LED uncovered view



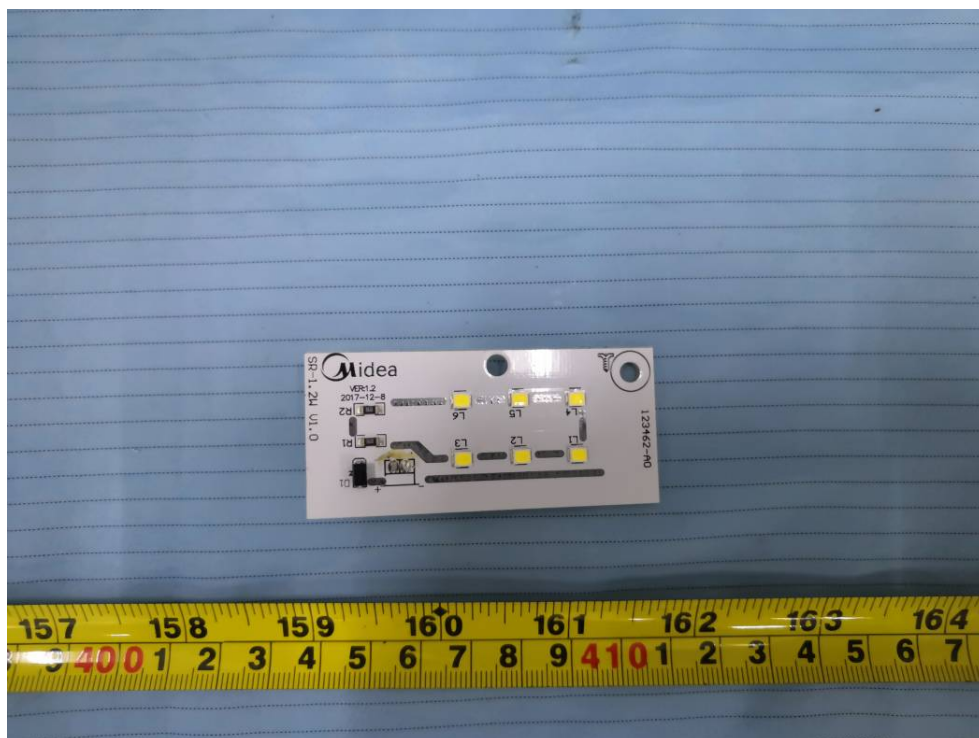
Main board top view



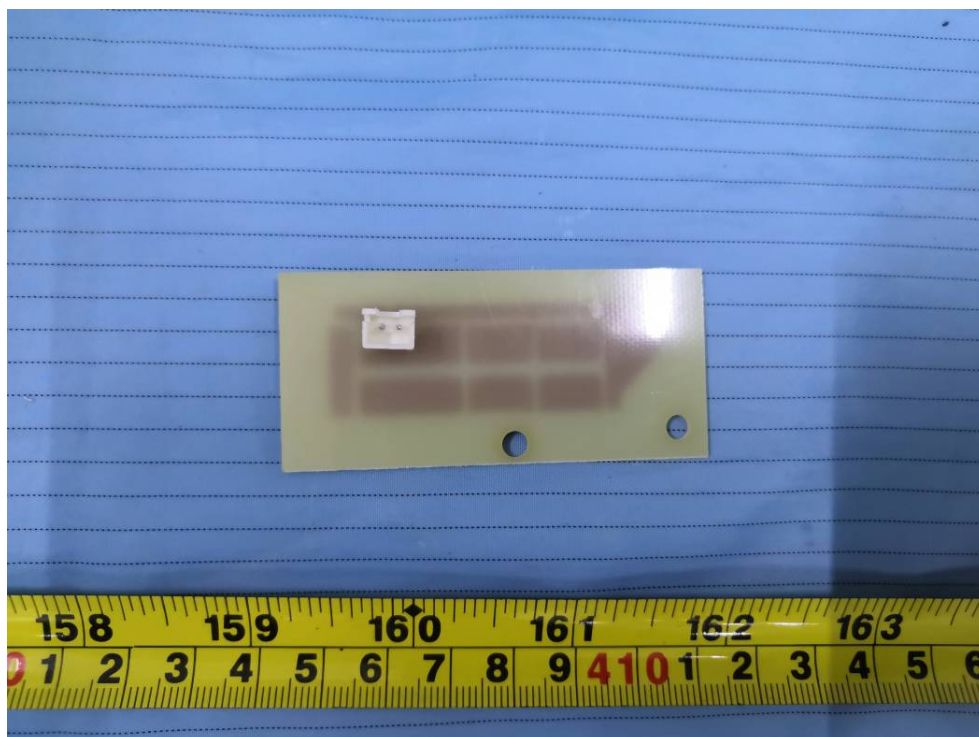
Main board bottom view



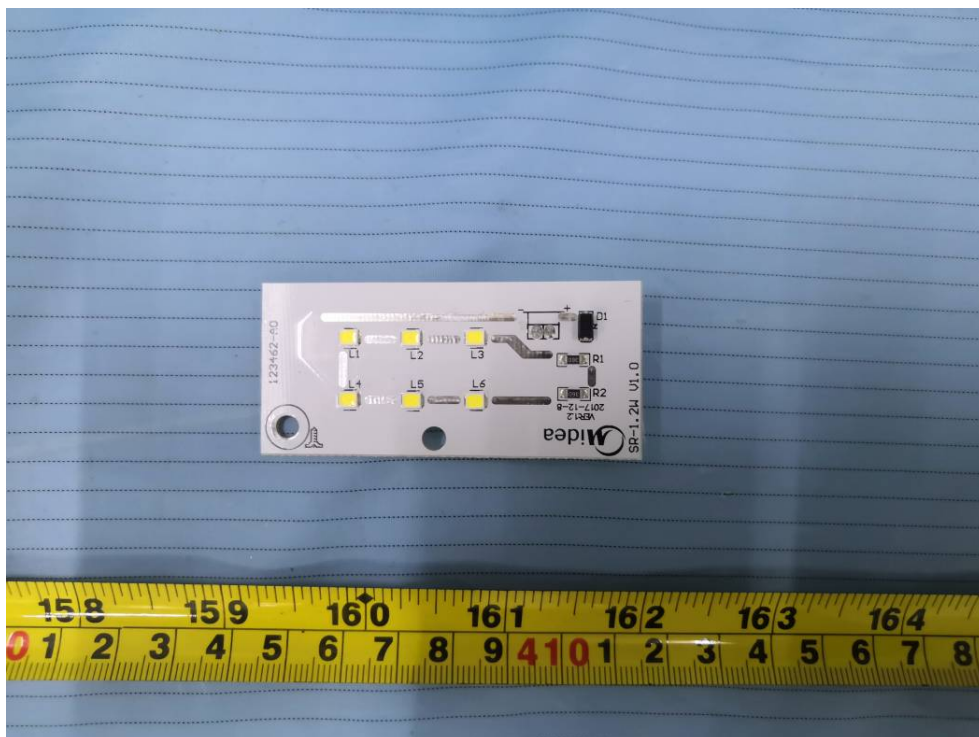
TOP LED front view



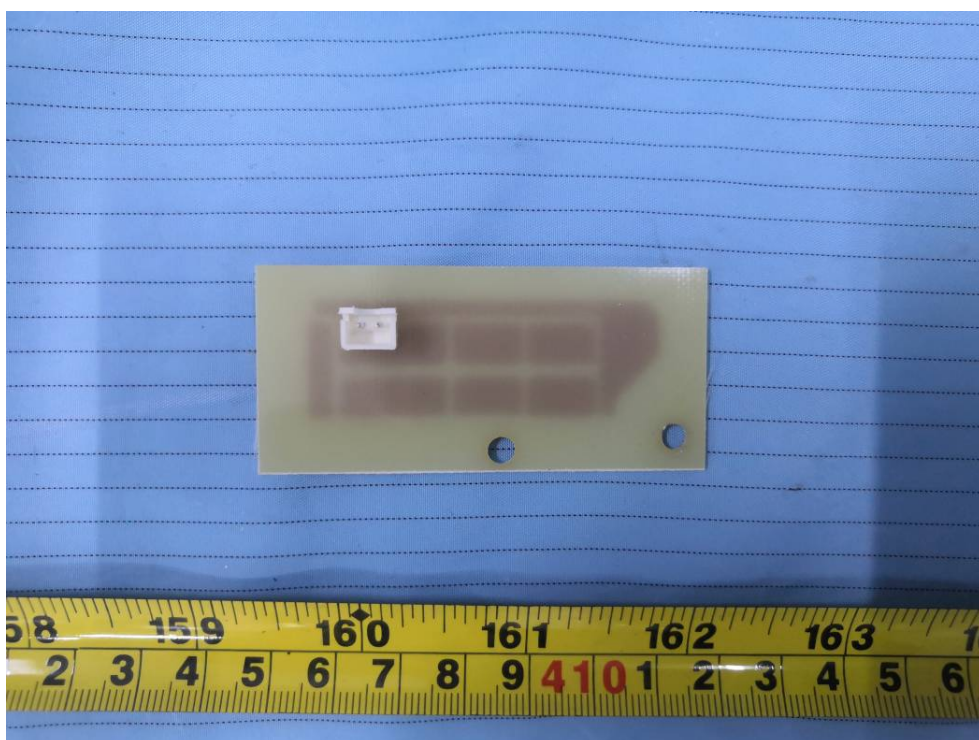
TOP LED back view



Bottom LED front view



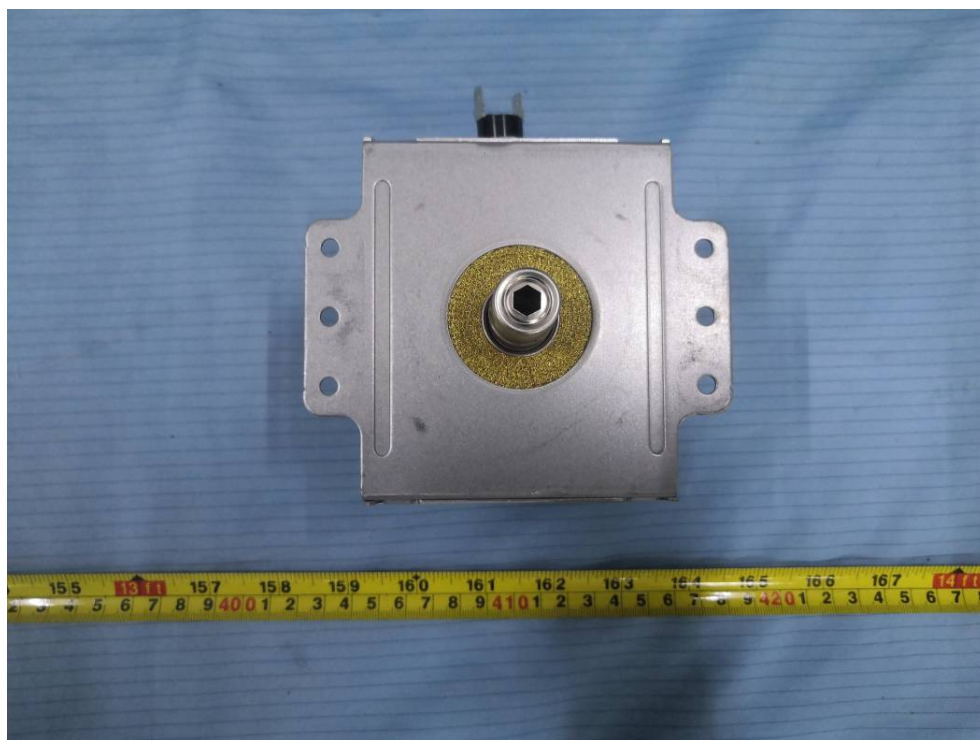
Bottom LED back view




Magnetron front view



Magnetron back view




Magnetron label view



A photograph of a square, metallic magnetron component with a label. The label is divided into several sections: the top left contains 'WITOL' in blue; the top right contains 'MADE IN CHINA' in blue; the center contains '2M319J' in blue; the bottom left contains '191014X3' in blue; the bottom right contains 'D622' in blue; and the bottom center contains 'CAUTION HIGH VOLTAGE MICROWAVE RADIATION' in blue, with '高电压危险' (High Voltage Danger) in Chinese characters to its right. The magnetron is set against a blue background.


Moter view



A photograph of a circular synchronous motor mounted on a white plastic housing. The motor's label is white with black and blue text. It includes the text 'SYNCHRONOUS MOTOR' at the top, a blue gear logo with 'H' inside, 'TYJ50-8A2' in a black box, 'Z.P' in a blue box, 'NO:E19932A', 'CLASS:F', '3W', '60Hz', 'CW/CCW', '120V~', '5r/min', 'FOSHAN SHUNDE HENGXING MICRO MOTOR CO.,LTD.', and '2019 10 10'. A white electrical plug with a yellow wire is connected to the motor. The motor is set against a white background.




Magnetron label view



A photograph of a square, metallic magnetron component with a label. The label is divided into several sections: the top left contains 'WITOL' in blue; the top right contains 'MADE IN CHINA' in blue; the center contains '2M319J' in blue; the bottom left contains '191014X3' in blue; the bottom right contains 'D622' in blue; and the bottom center contains 'CAUTION HIGH VOLTAGE MICROWAVE RADIATION' in blue, with '高电压危险' (High Voltage Danger) in Chinese characters to its right. The magnetron is set against a blue background.

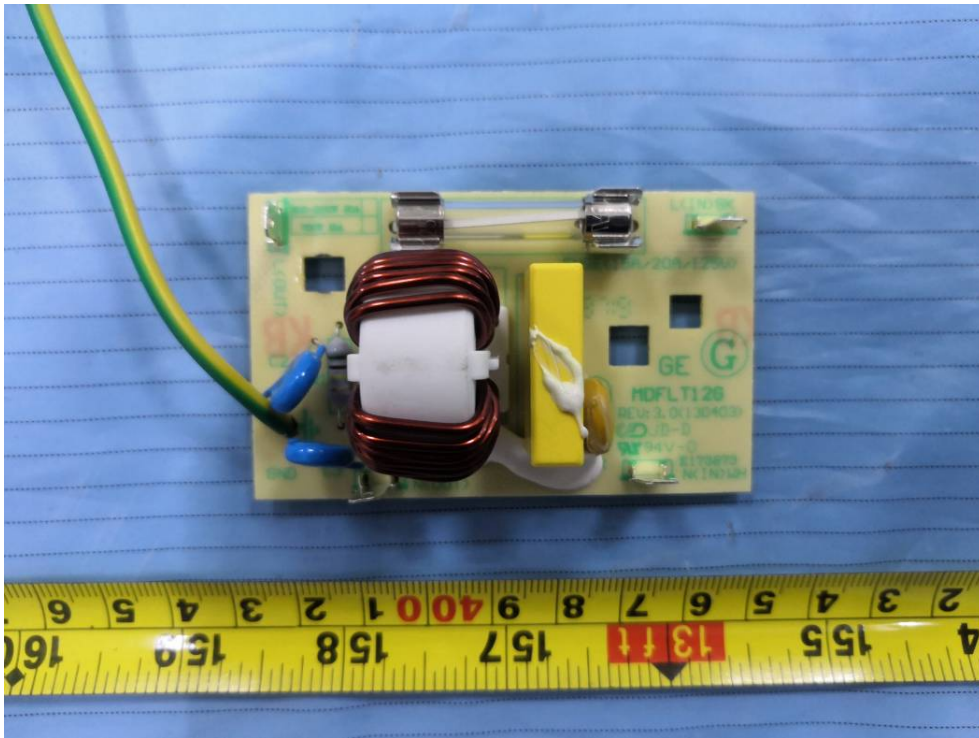
Moter view



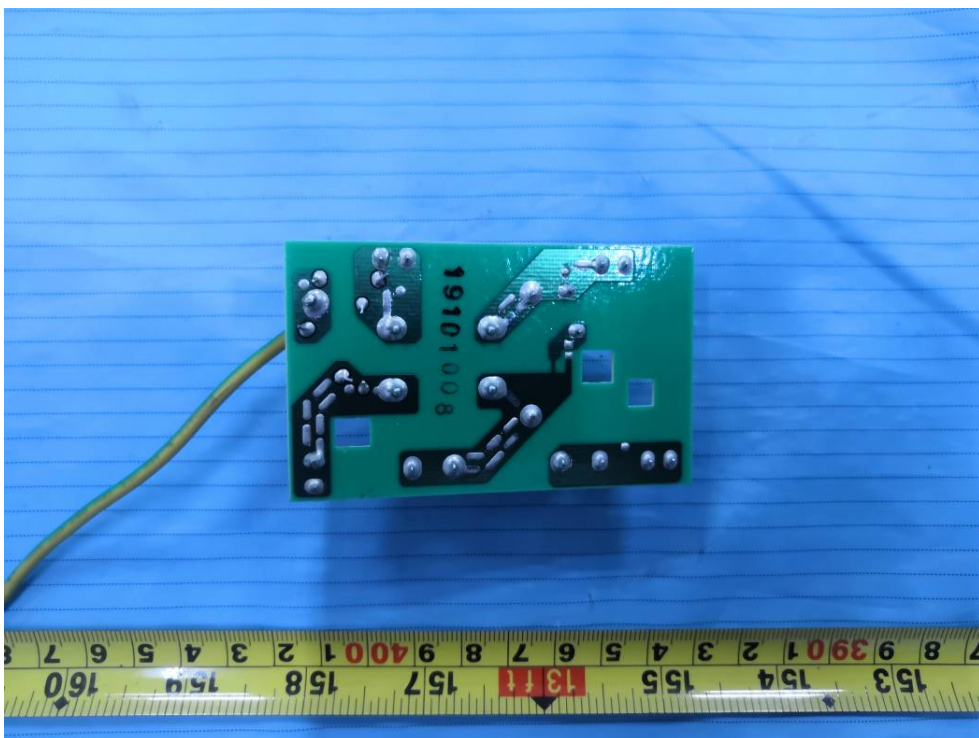
A photograph of a circular synchronous motor mounted on a white plastic housing. The motor's label is white with black and blue text. It includes the text 'SYNCHRONOUS MOTOR' at the top, a blue gear logo with 'H' inside, 'TYJ50-8A2' in a black box, 'Z.P' in a blue box, 'NO:E19932A', 'CLASS:F', '3W', '60Hz', 'CW/CCW', '120V~', '5r/min', 'FOSHAN SHUNDE HENGXING MICRO MOTOR CO.,LTD.', and '2019 10 10'. A white plastic connector with a yellow wire is attached to the motor's side. The motor is set against a white background.



Power supply board top view



Power supply board bottom view



Transformer view



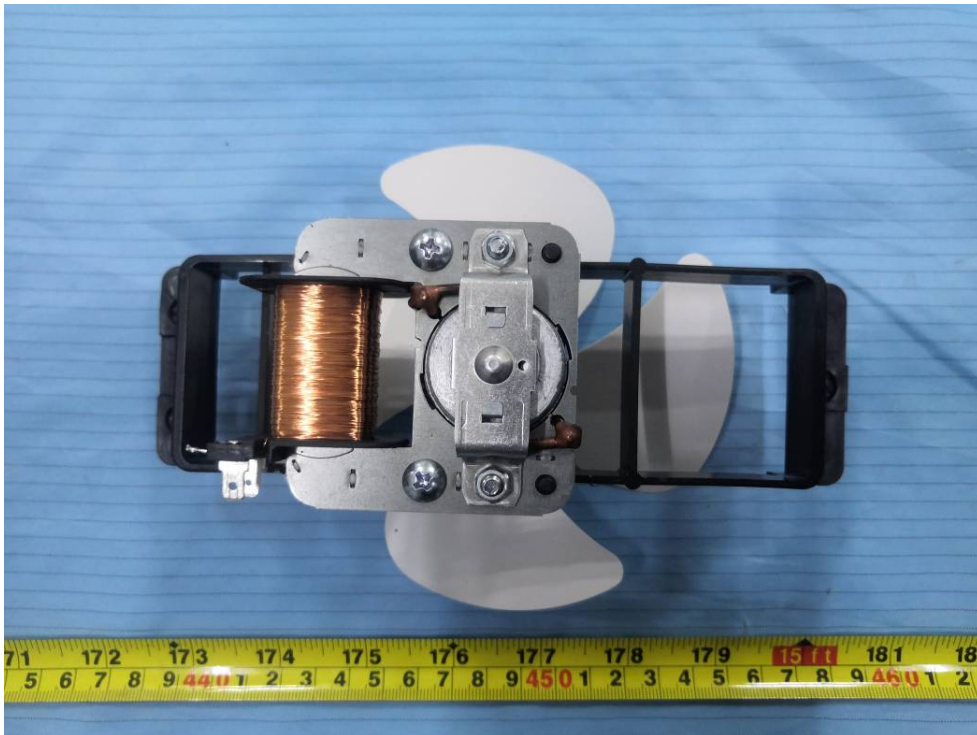
Transformer label view



Fan front view



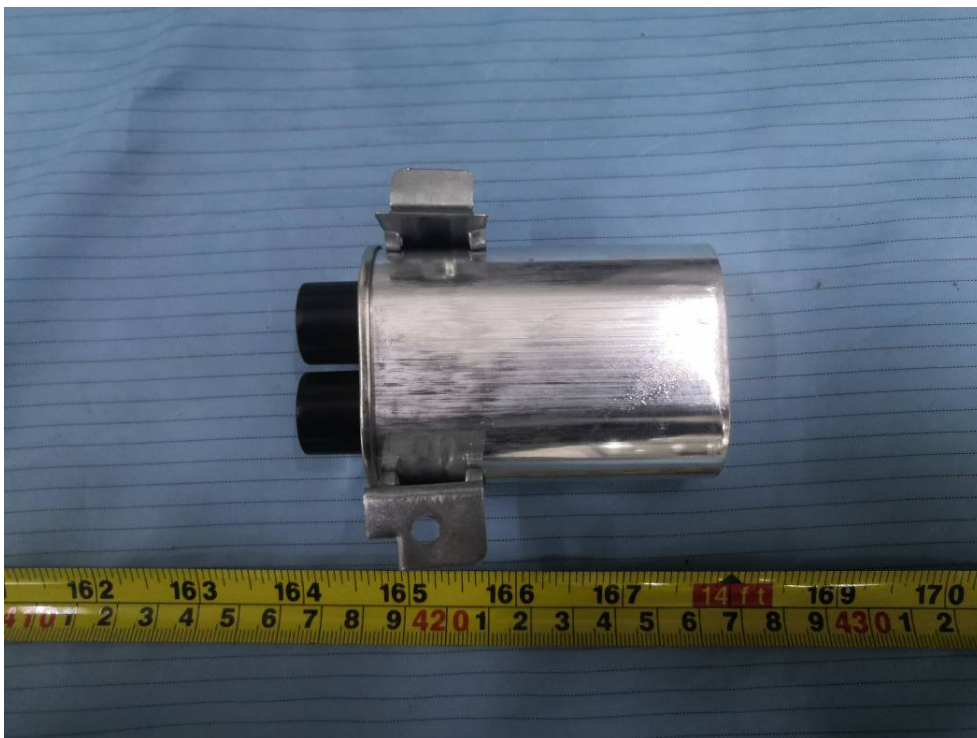
Fan back view



H.V.Capacitor front view



H.V.Capacitor back view



H.V.Capacitor label view



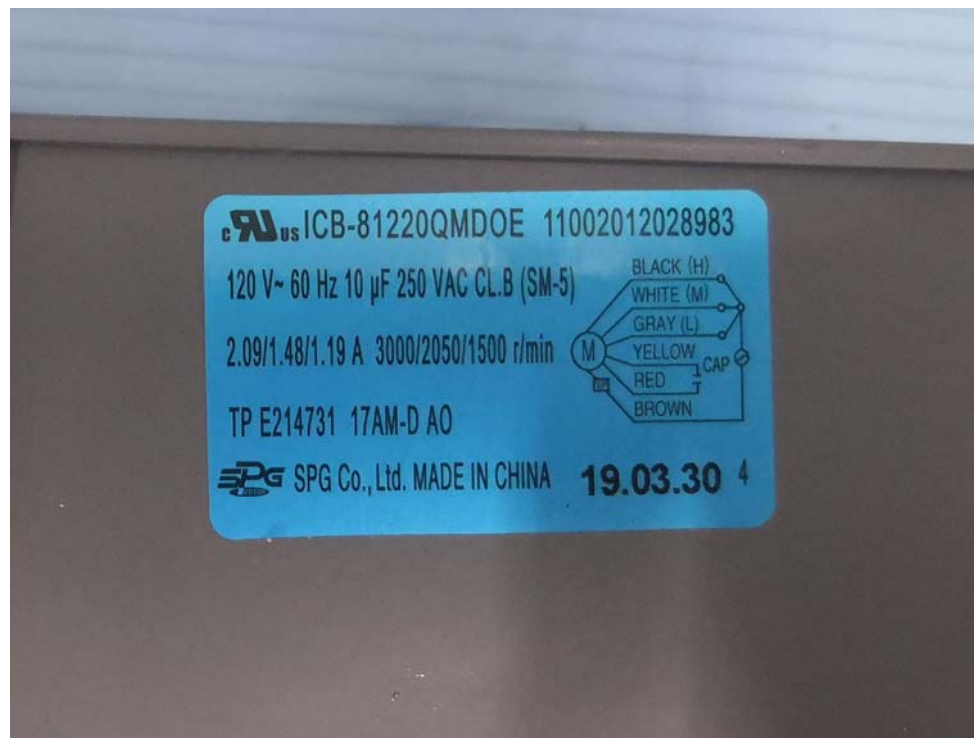
Exhaust fan front view



Exhaust fan back view



Exhaust fan label view



Doide view

