

Shenzhen Chuangkehua Technology Co., Ltd

SPECIFICATION FOR
APPROVAL

CUSTOMER Jiangxi Xingtai Technology Co., Ltd

Product Name XET-1634

material code:
PART NO

Material Description:
SPECIFICATIO

APPROVED BY	SIGNATURE	DATE
Mechanical Engineer:	Zhou	2023-05-31
RF Engineer:	Chen	2023-05-31
Engineering Manager:	Wang	2023-05-31
Approved By Customer (as required):		

1.0 DESCRIPTIONS AND PART NUMBER:

1.1 DESCRIPTION;
The antenna mounts to the housing of the cellular phone. And after that, the feed point on the prolongation of metal plate should firmly touch the contact provided on the PCB in the respective area.

1.2 PART NUMBER

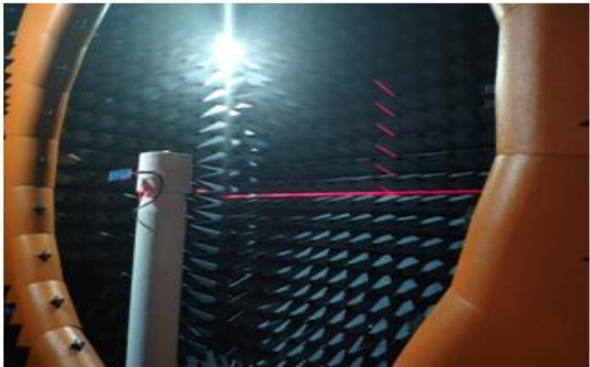
Part number	Frequency Band	HH Part Number
-------------	----------------	----------------

	2.4GBT	
--	--------	--

2.0FREQUENCY BAND

2.4GBT

2.1 ACTIVE TEST REPORT



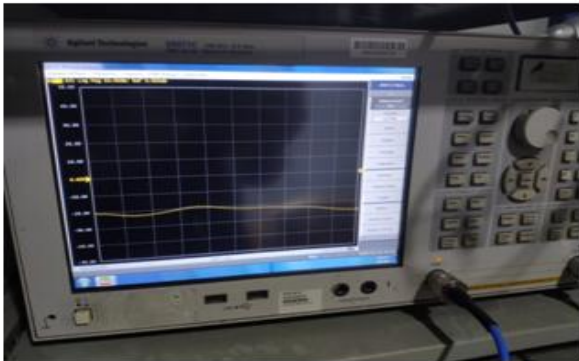
7*4*3M 3D microwave chamber



MT8820C



Agilent 8960

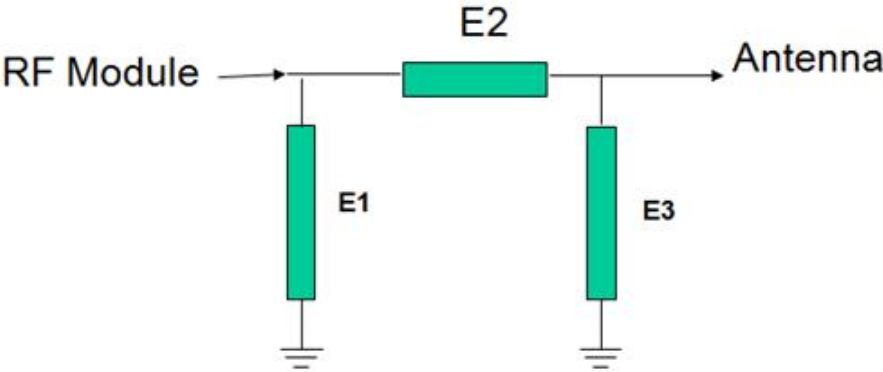


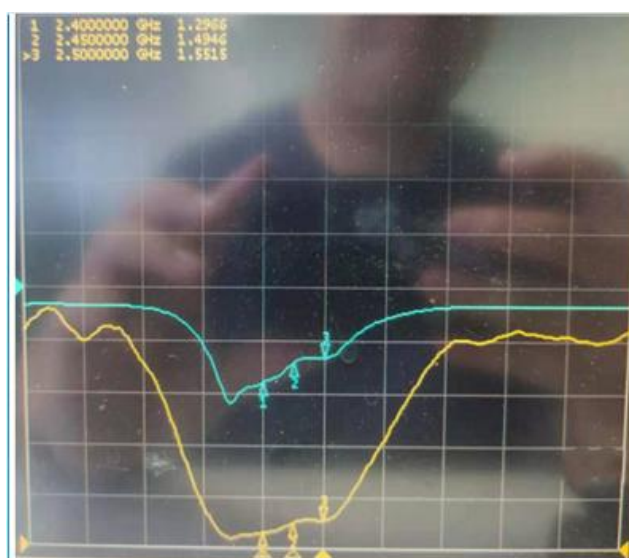
Agilent E5071C

3D microwave chamber

Matching (no changes)

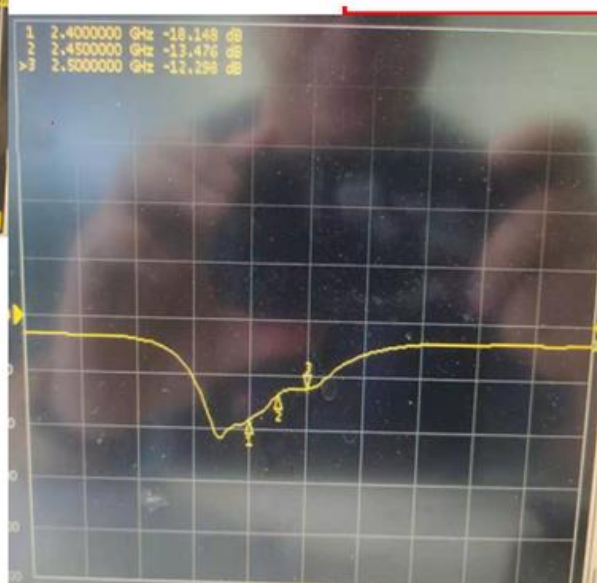
Element	E1	E2	E3
Value	/	/	/





Standing wave diagram:

Standing wave return loss diagram:

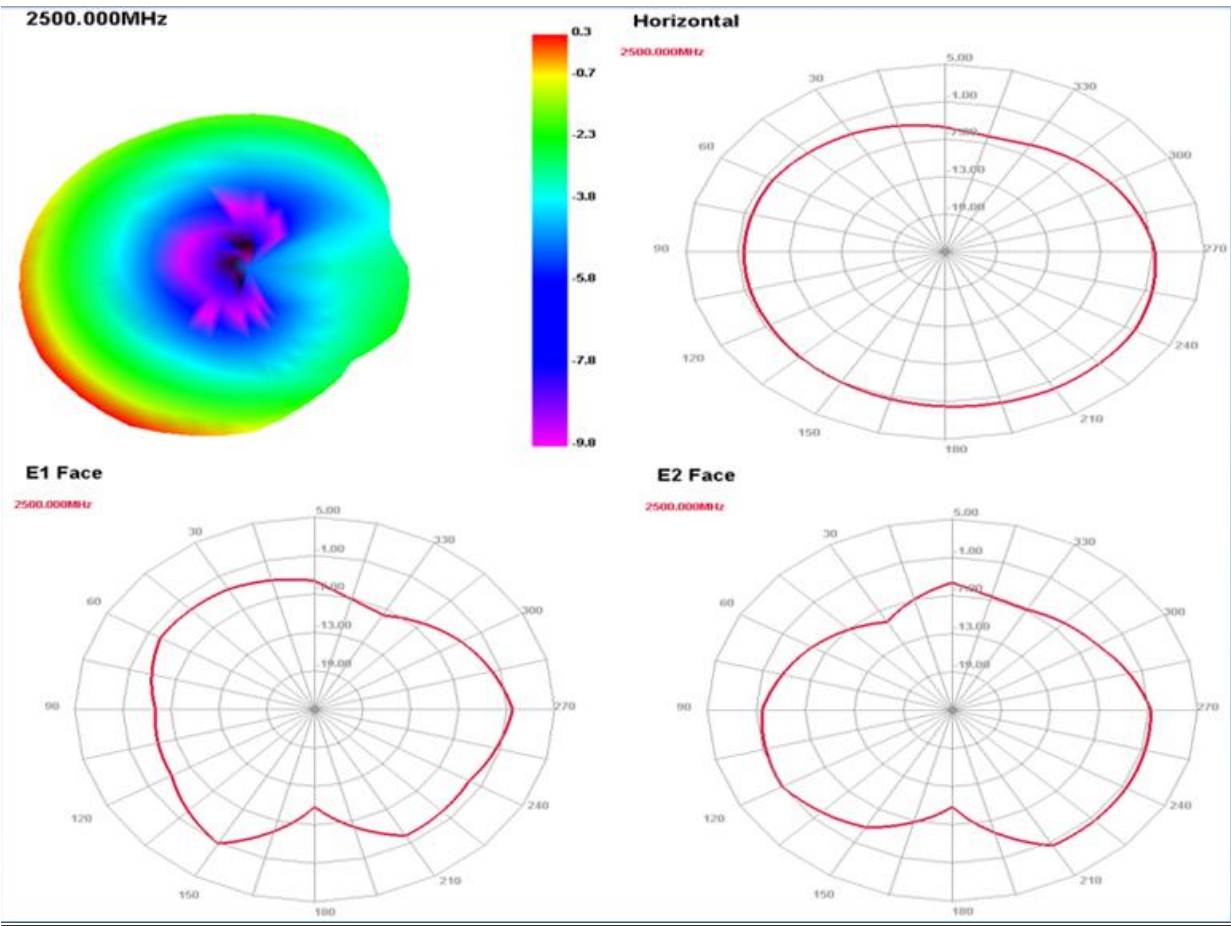
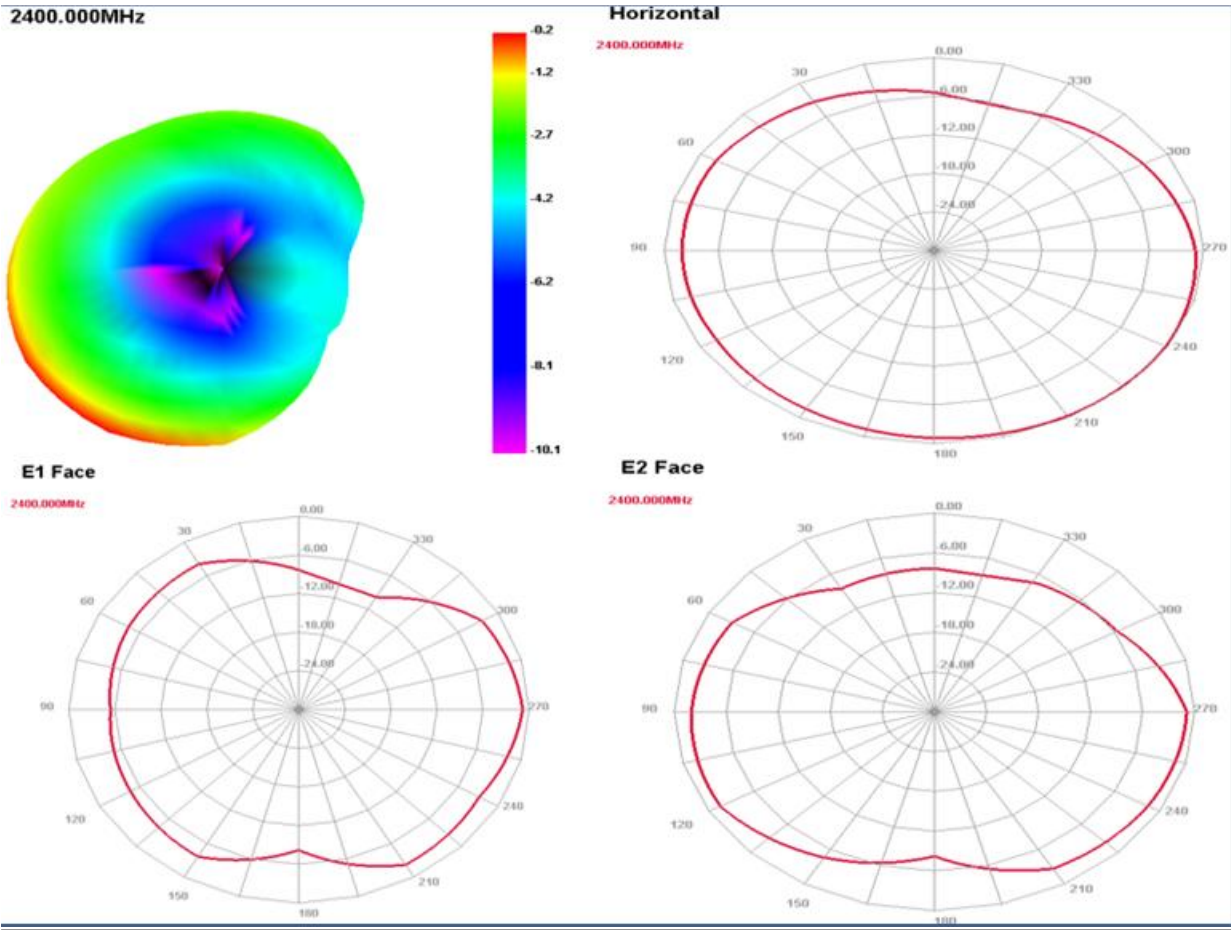


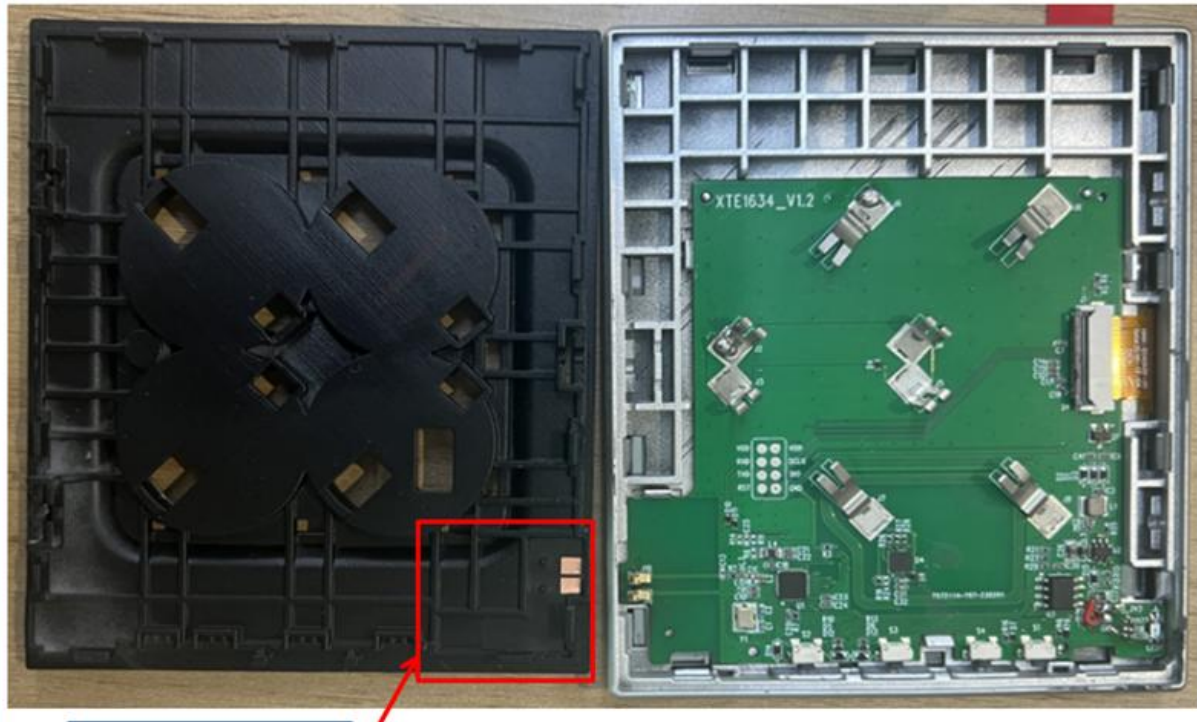
Standing wave return loss diagram:

Standing wave diagram:

3.0 MECHANICAL SPECIFICATIONS:

Passive Test For WIFI2.4										
Freq (MHz)	Effi (%)	Effi (dB)	Gain (dBi)	Gain (dBd)	UHS (%)	DHIS (%)	Max (dB)	Min (dB)	Attenut Hor	Attenut Ver
2400	48.19	-3.17	-0.2	-2.35	20.781	27.411	-0.2	-10.14	47.51	47.63
2410	48.73	-3.12	-0.16	-2.31	20.848	27.877	-0.16	-10.08	47.34	47.64
2420	47.35	-3.25	-0.33	-2.48	20.056	27.298	-0.33	-9.98	47.27	47.45
2430	45.09	-3.46	-0.67	-2.82	18.884	26.208	-0.67	-9.82	47.09	47.44
2440	47.04	-3.27	-0.58	-2.73	19.481	27.563	-0.58	-9.21	47.25	47.56
2450	48.82	-3.11	-0.52	-2.67	19.922	28.9	-0.52	-8.98	47.42	47.77
2460	51.85	-2.85	-0.14	-2.29	20.915	30.939	-0.14	-8.78	47.67	47.91
2470	52.61	-2.79	0.01	-2.14	20.997	31.617	0.01	-9.12	47.7	48.04
2480	54.64	-2.62	0.37	-1.78	21.711	32.934	0.37	-9.34	47.89	48.23
2490	56.46	-2.48	0.46	-1.69	22.295	34.162	0.46	-9.59	48.1	48.34
2500	54.06	-2.67	0.27	-1.88	21.357	32.704	0.27	-9.81	47.94	48.19





As shown in the figure: Inside the wire frame is the position map of the main antenna

3.1 MECHANICAL CONFIGURATION

The appearance of the antenna is in accordance with drawing 40-SZ2618Q-01

3.2 CONNECTOR TYPE

The connector type is an embedded type.

FIGURE 2:Antenna Configuration

4.0 ENVIRONMENTAL SPECIFICATIONS

Environmental treatment:NO

4.1 TEMPERATURE

Operating Temperature Range: -40°C~ +85°C

Storage Temperature Range: -40°C~ +120°C

4.2 SALT SPRAY TEST

Antenna be exposed in a 35°C, 5% salt fog chamber for 24 hours then check the appearance and performance against the specifications in normal temperature.

4.3 STATIC HUMIDITY TEST

The antenna is subjected to the following test:

Temperatures: +70°C and 90%--95%RH

Test Duration: 24 Hours

The antenna should not undergo any structural or functional change and remain within the electrical/mechanical specification.

5.0 PACKAGING

The antennas will be packed in bags, There are 100 or 200 antennas per bag. The bags are packed in corrugated fibreboard over box.

Antenna drawings:

