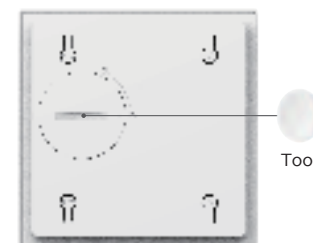
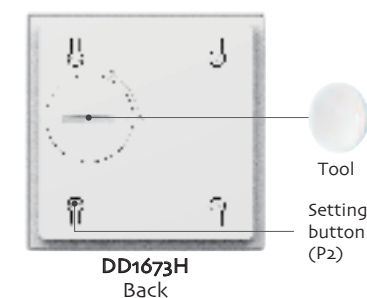
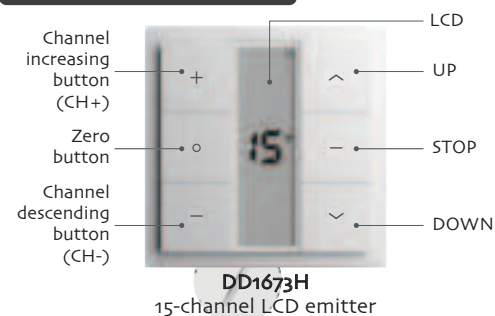


# DD1673H

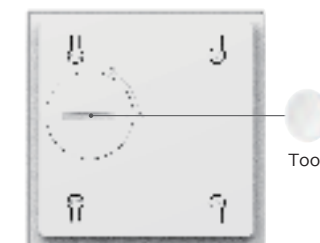
## Emitter Instruction

Version: A/05

### Instruction Of Buttons



With tools such as coin or round flake (thickness  $\leq 2.5\text{mm}$ ), press the battery cover down to the bottom and rotate at counterclockwise, when the arrow of battery cover turns to "🔓", the battery cover is opened



First align the arrow of battery cover to "🔓", with tools such as coin or round flake (thickness  $\leq 2.5\text{mm}$ ), press the battery cover down to the bottom and rotate at clockwise, when the arrow turns to "🔒", the battery cover is closed

### Technical specification

Battery: 3V DC (CR2430)	Battery life: >2 years
Radio frequency: 433.92MHz	Working temperature: $-10^{\circ}\text{C} \sim 50^{\circ}\text{C}$
	Radio range: 200 meters outdoor, 35 meters indoor



### INGESTION HAZARD: This product contains a button cell or coin battery.

- 1, Remove and immediately recycle or dispose of used batteries according to local regulations and keep away from children. Do NOT dispose of batteries in household trash or incinerate.
- 2, Even used batteries may cause severe injury or death.
- 3, Call a local poison control center for treatment information.
- 4, Non-rechargeable batteries are not to be recharged.
- 5, Do not force discharge, recharge, disassemble, heat above  $(40^{\circ}\text{C})$  or incinerate. Doing so may result in injury due to venting, leakage or explosion resulting in chemical burns.
- 6, Ensure the batteries are installed correctly according to polarity (+ and -).
- 7, Do not mix old and new batteries, different brands or types of batteries, such as alkaline, carbon-zinc, or rechargeable batteries.
- 8, Remove and immediately recycle or dispose of batteries from equipment not used for an extended period of time according to local regulations.
- 9, Always completely secure the battery compartment. If the battery compartment does not close securely, stop using the product, remove the batteries, and keep them away from children.
- 10, Emitter couldn't expose to moisture or be struck heavily, or else the emitter life will be affected.
- 11, If the emitter is not so sensitive or the radio range becomes shorter, pls check whether to change the battery.
- 12, If the voltage is less than 2.6V, there will be a low voltage indication.
- 13, Under uni-directional mode, if you press any button more than 20S, while under bi-directional mode, you press any button 5S, the emitter will stop sending radio signals.



### RF exposure statement

This equipment complies with the FCC radiation exposure limits set forth for an uncontrolled environment. This transmitter must not be co-located or operating in conjunction with any other antenna or transmitter.

### FCC Warning

This device complies with Part 15 of the FCC Rules.

Operation is subject to the following two conditions:

(1) This device may not cause harmful interference, and (2) this device must accept any interference received, including interference that may cause undesired operation.

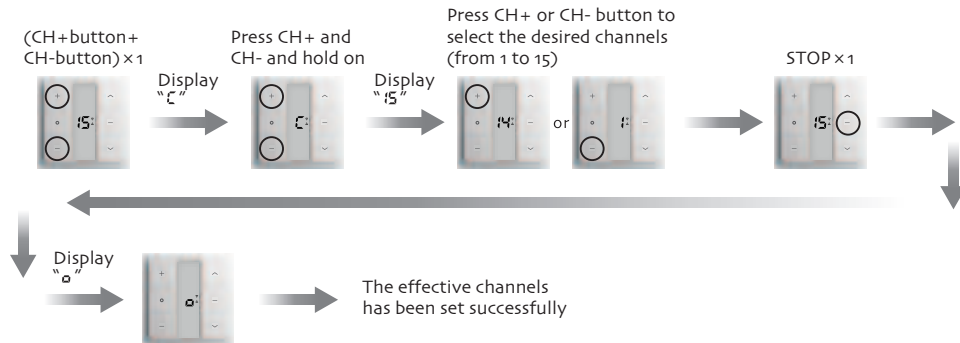
Note 1: This equipment has been tested and found to comply with the limits for a Class B digital device, pursuant to part 15 of the FCC Rules. These limits are designed to provide reasonable protection against harmful interference in a residential installation. This equipment generates, uses and can radiate radio frequency energy and, if not installed and used in accordance with the instructions, may cause harmful interference to radio communications. However, there is no guarantee that interference will not occur in a particular installation. If this equipment does cause harmful interference to radio or television reception, which can be determined by turning the equipment off and on, the user is encouraged to try to correct the interference by one or more of the following measures:

- Reorient or relocate the receiving antenna.
- Increase the separation between the equipment and receiver.
- Connect the equipment into an outlet on a circuit different from that to which the receiver is connected.
- Consult the dealer or an experienced radio/TV technician for help.

NOTE 2: Any changes or modifications to this unit not expressly approved by the party responsible for compliance could void the user's authority to operate the equipment.

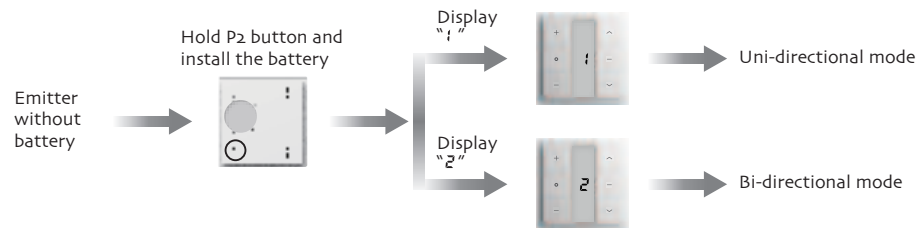
## Set Number of Channels

Note: 1, In the setting status, press UP or DOWN button to exit quickly.  
2, Repeat the same process if you want to adjust the number of channels.



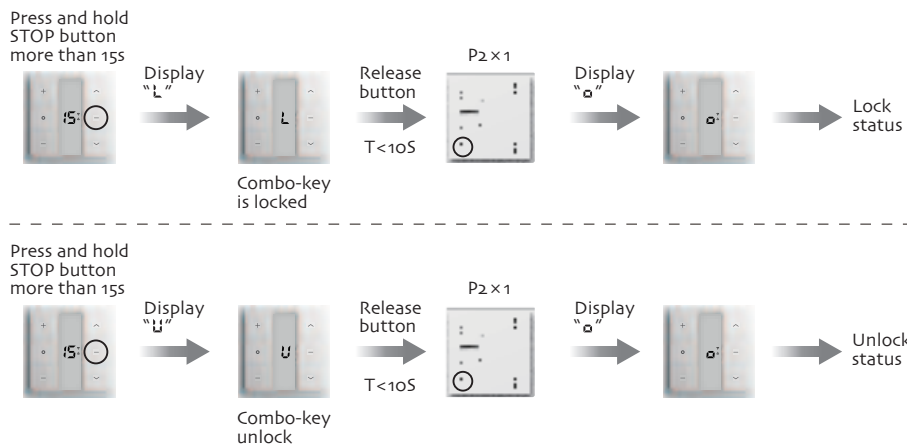
## Switch Between Uni-directional and Bi-directional Mode

Note: The factory default mode is Bi-directional mode, repeat the same operation to switch the mode circularly.



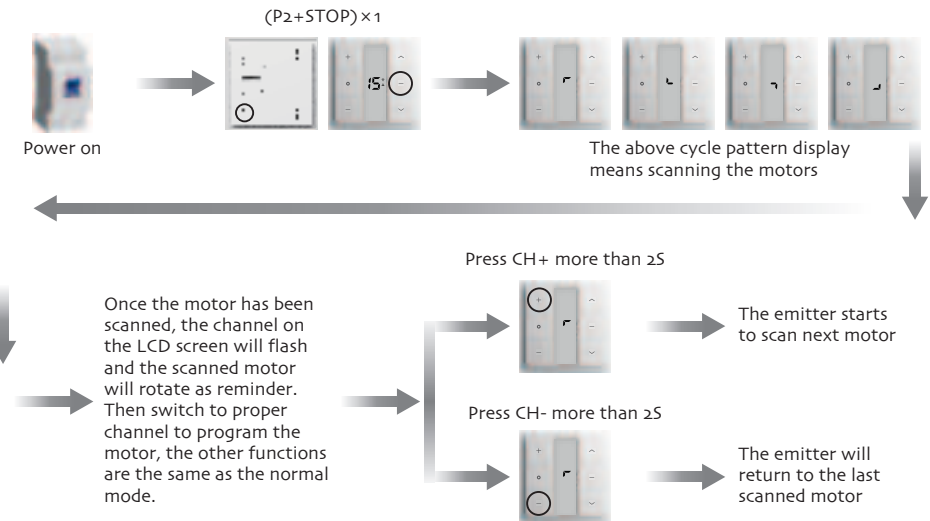
## Lock / Unlock Combo-key Operation

Note: 1, If there is no operation for 10 seconds, it will automatically exit the setting status.  
2, The factory default is unlock status, repeat same operation to switch status circularly.  
3, Under lock status, the combo-keys don't work; Under unlock status, the combo-keys will work normally.  
4, Only the transmitting code will be affected if the combo-keys are locked.



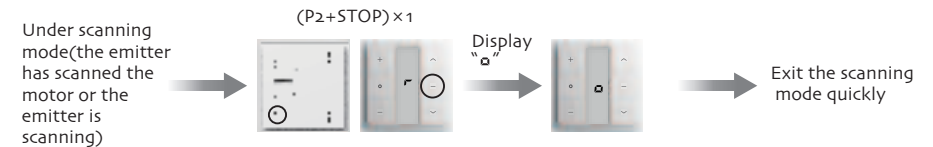
## Scanning And Programming Operation

Note: 1, Only available under bi-directional mode.  
2, Even the combo-keys are locked, the scanning still works.  
3, One remote can scan max. 15pcs motors.  
4, If more than 90s, the remote doesn't search any motors, it will exit the scanning operation automatically.  
5, If one motor has been searched but without any valid operation within 90s, it will exit this motor and scan next motor automatically.



## Exit Scanning And Programming Operation

### Method one



### Method two

