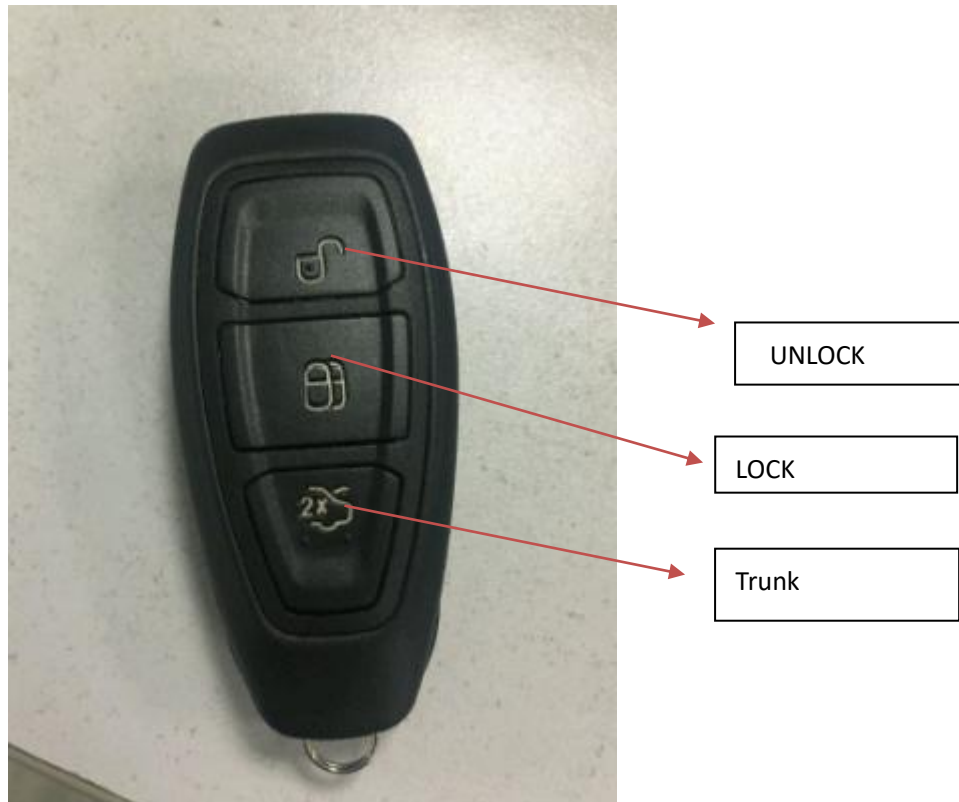


Company: Remote Tech LLC

Address: 310 ALDER RD,Dover,DE 19904,USA

Name:Remote Key

Model: RT-FD601



### Operation instructions

1. After matching the key to the car, press 1 the unlock key for 2 seconds to open the door and press 2 the lock key for 2 seconds to close the door.
2. The ignition key is used to manually unlock and start the car.

### Product parameters

Rated voltage	DC 3V
Working current	<12mA
Operating voltage	DC 3.3V-2.2V
Transmit power	>-8dbm
Key operation force	200±50g
Operating temperature	-5° C +45° C
Stand-by current	<7uA
transmitting frequency	433.92MHZ±75KHZ

Modulation	ASK
Battery	CR2032
Key durability	More than 70,000 times

This device complies with Part 15 of the FCC Rules. Operation is subject to the following two conditions: (1) this device may not cause harmful interference, and (2) this device must accept any interference received, including interference that may cause undesired operation.

Changes or modifications not expressly approved by the party responsible for compliance could void the user's authority to operate the equipment.

NOTE: This equipment has been tested and found to comply with the limits for a Class B digital device, pursuant to Part 15 of the FCC Rules. These limits are designed to provide reasonable protection against harmful interference in a residential installation. This equipment generates, uses instructions, may cause harmful interference to radio communications. However, there is no guarantee that interference will not occur in a particular installation. If this equipment does cause harmful interference to radio or television reception, which can be determined by turning the equipment off and on, the user is encouraged to try to correct the interference by one or more of the following measures:

- Reorient or relocate the receiving antenna.
- Increase the separation between the equipment and receiver.
- Connect the equipment into an outlet on a circuit different from that to which the receiver is connected.
- Consult the dealer or an experienced radio/TV technician for help.

The distance between user and products should be no less than 20cm

-English Warning Statement:

“This device complies with Industry Canada licence-exempt RSS standard(s). Operation is subject to the following two conditions: (1) this device may not cause interference, and (2) this device must accept any interference, including interference that may cause undesired operation of the device.”

The digital apparatus complies with Canadian CAN ICES-3 (B)/NMB-3(B).

-French Warning Statement:

“Le présent appareil est conforme aux CNR d'Industrie Canada applicables aux appareils radio exempts de licence. L'exploitation est autorisée aux deux conditions suivantes : (1) l'appareil ne doit pas produire de brouillage, et (2) l'utilisateur de l'appareil doit accepter tout brouillage radioélectrique subi, même si le brouillage est susceptible d'en compromettre le fonctionnement.”

Cet appareil numérique de la classe B est conforme à la norme NMB-003 du Canada.

This equipment complies with IC radiation exposure limits set forth for an uncontrolled environment and meets RSS-102 of the IC radio frequency (RF) Exposure rules. This equipment has very low levels of RF energy that are deemed to comply without testing of specific absorption ratio (SAR). Cet équipement est conforme aux limites d'exposition aux rayonnements énoncées pour un environnement non contrôlé et respecte les règles d'exposition aux fréquences radioélectriques (RF) CNR-102 de l'IC. Cet équipement émet une énergie RF très faible qui est considérée conforme sans évaluation du débit d'absorption spécifique (DAS).