

FCC statement:

This device complies with Part 15 of the FCC rules. Operation is subject to the following two conditions:
1) this device may not cause harmful interference, and 2) this device must accept any interference received, including interference that may cause undesired operation.

Note: This equipment has been tested and found to comply with the limits for a Class B digital device, pursuant to part 15 of the FCC Rules. These limits are designed to provide reasonable protection against harmful interference in a residential installation.

This equipment generates uses and can radiate radio frequency energy and, if not installed and used in accordance with the instructions, may cause harmful interference to radio communications.

However, there is no guarantee that interference will not occur in particular installation. If this equipment does cause harmful interference to radio or television reception, which can be determined by turning the equipment off and on, the user is encouraged to try to correct the interference by one or more of the following measures:

- Reorient or relocate the receiving antenna.
- Increase the separation between the equipment and receiver.
- Connect the equipment into an outlet on a circuit different from that to which the receiver is connected.
- Consult the dealer or an experienced radio/TV technician for help.

Changes or modifications not expressly approved by the party responsible for compliance could void the user's authority to operate the equipment.

Radiation Exposure Statement

This device complies with FCC RF radiation exposure limits set forth for an uncontrolled environment. This transmitter must not be co-located or operating in conjunction with any other antenna or transmitter. During the operation of device a distance of 15 cm surrounding the device and 20 cm above the top surface of the device must be respected.

AK03

3 in 1
Wireless Charging Station

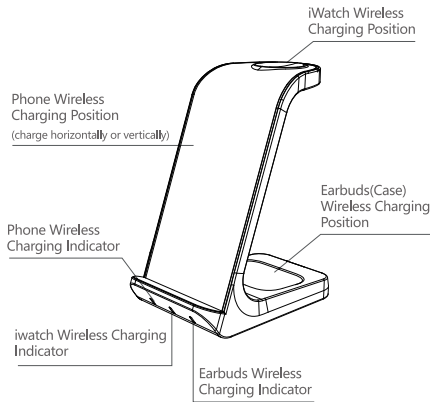
Product Manual

CE FC RoHS
MADE IN CHINA

Product Introduction

Thanks for choosing us!

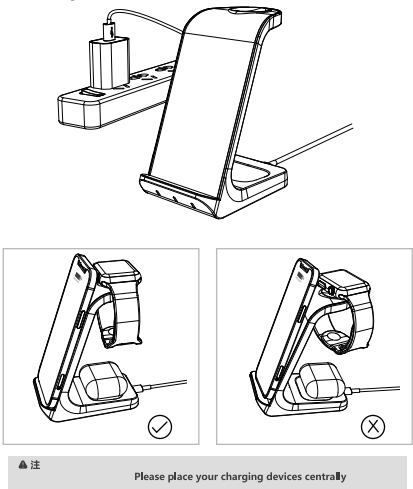
This product is a 3 in 1 fast wireless charging Station that can simultaneously support wireless charging of iwatch, Qi standard phones, Earbuds. It is a convenient and practical smart electronic device. Please read the manual carefully before using the product, and keep properly for checking.



Using Methods

1 Connect The Power

Connect one end of the USB-C data cable to product input port, the other end to the power supply, then the product enters into standby state. The indicator status is: the left and right indicator are shown as blue light and keep on; the middle indicator shown as blue&green indicator flashing twice and then goes off.

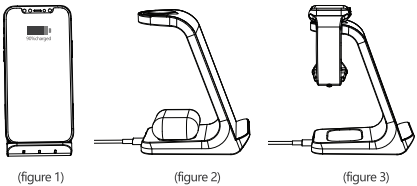


2 Three Device Charging Models

* 5W/7.5W/10W/15W—After place the mobile phone(with wireless charging function) on the phone charging position,the phone starts to charge,the corresponding left indicator shown as green and keep on. When it fully charged, the left green light will flash 3 seconds and goes off; (As Shown figure 1)

* 5W—After place the earbuds(with wireless charging case) on the earbuds charging position,the earbuds starts to charge,the corresponding right indicator shown as green and keep on. (As Shown figure 2)

* 3W—After place the iwatch on the watch charging position,the watch starts to charge,the corresponding middle right shown as green and keep on. (As Shown figure 3)



▲ Note
At present, only Samsung mobile phones support full charge feedback, the indicator light does not give any hint when the other mobile phones are fully charged!

3 Foreign Object Detection Function

When a wireless charging area senses a metal foreign object or the position of the mobile phone is misplaced, it will start the FOD warning function, and the corresponding indicator will shown as blue light flashes continuously. After placing the phone in the correct position or removing the metal foreign objects, the normal charging state can be restored.

Product Specification

Input	5.0V=2.0A 9.0V=2.2A
Output	5W/7.5W/10W/15W
Frequency	110-205KHz
Efficiency	≥ 82%
Product Size	67.5mm*132mm*104mm

Note

1. Do not hit this product, throw it into fire or water to avoid short
2. Do not place this product in a high or low temperature, or humid environment (temperature range -10°C—+40°C)
3. Please keep wireless charger away from implanted medical equipment (pacemaker, implantable cochlea, etc.) at least 20cm to avoid potential interference to medical equipment.
4. Please keep the product away from children reachment to avoid accidents.
5. Please use the standard accessories of this product. If this product is damaged due to the use of non-standard accessories, it is not covered by the warranty.
6. Do not disassemble the product without permission. If the product is damaged, it will not be covered by the warranty.