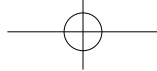




# 1080p Panoramic Camera

## Quick Setup Guide





# What's in the Box

## Package Contents

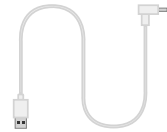
**Note:** Images and quantities may vary depending on your model number.



1 x 1080p Panoramic Camera  
(Model #: WCM-2FEIN)



1 x Power Supply  
5V 1.0 Amp



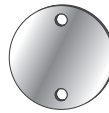
1 x 90°  
Flat Cable



3 x Mounting  
Hardware  
(includes extra screw)



Night Owl  
Security Sticker(s)



1 x Magnetic  
Mounting Bracket



1 x Adhesive  
Mounting Tape

## Testing with a Smart Device

**Note:** For **OPTION #2** setup, Night Owl recommends using your Smart Device to test the location for your Wi-Fi signal strength before installing the camera.



## Status Light Key



**Quickly Flashing** - Pairing Mode (default)

**Slowly Flashing** - Camera is not connected to your Wireless Device or Wi-Fi network

**Solid Light** - Camera is connected to a network and functional



## Add-On or Standalone

Night Owl gives you options!

Your camera can be used as an add-on to an existing Night Owl Wireless NVR or Hybrid DVR system or as a standalone camera that records to a microSD card.

**Note:** The camera is compatible with Night Owl's Wireless NVR (WNVRC20 Series) and Hybrid DVR (HC20X Series).

### OPTION #1: Pairing to your Existing System



When used as an add-on to your existing Wireless NVR **A** or Hybrid DVR **B**, the camera can be viewed using your Night Owl Connect App.

Please follow the **OPTION #1** setup instructions (pg. 3) to add your camera.

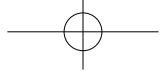
**Note:** You must complete add-on camera setup in the same room as the existing system.

### OPTION #2: Standalone Camera Pairing to your Router



To use as a standalone camera, please follow the **OPTION #2** setup instructions found on page 7. You will need to download and install the Night Owl Connect App to view and control the camera. A microSD card (not included) will be required to use the recording function.

**Note:** Camera will be in pairing mode when first powered on. If the camera is not in pairing mode, please follow pairing instructions found on page 10.



## OPTION #1: A Pairing to existing Wireless NVR

By default, the camera will be in pairing mode when it's first powered on. Pairing allows for the wireless transmission coming from the camera to be detected by the Wireless NVR.

To pair an add-on camera to your Night Owl Wireless NVR, please use the following steps:

**Note:** When pairing the camera to your NVR make sure you are in the same room as the NVR. ALWAYS test the camera locally before installing.

- 1 Power on the add-on camera using the camera power adapter. You will hear the camera say, "Camera is in pairing mode," and the status light flashes quickly. If the camera is not in pairing mode, please refer to page 10 for pairing instructions.

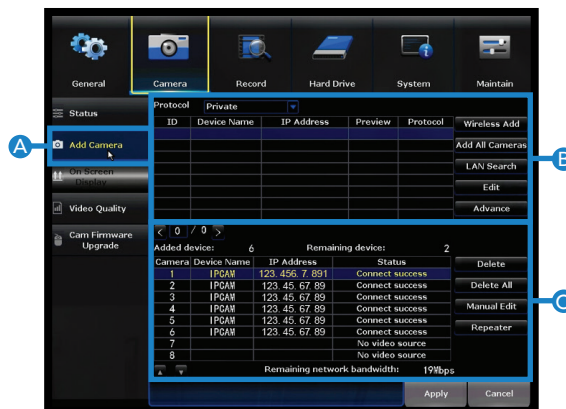


- 2 With the NVR connected to a TV/Monitor, login, then right click on your mouse and navigate to the Main Menu using the options bar.



- 3
  - A Go to the Camera Menu and select the "Add Camera" tab on the left side of the menu.
  - B The top portion of the screen lists cameras that have been found but not yet paired.
  - C The bottom portion of the screen shows all cameras that are currently paired to the NVR.

**Note:** Please be patient as the NVR locates the add-on camera. May take up to 3 minutes.





- 4 **A** With the camera in pairing mode, click on “Wireless Add” located on the Add Camera screen. Your NVR will now search for new cameras.

**B Note:** The add-on camera will not appear in the bottom screen with the other paired cameras until the NVR finds and pairs the new camera.

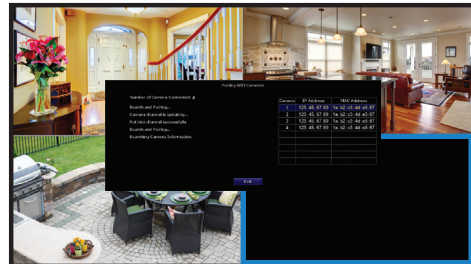


- 5 Within the Wireless Add screen, the “Number of Cameras Connected” signifies those cameras that are already paired to the Wireless NVR and will not immediately reflect this new camera.

**Note:** You cannot exceed the number of Wireless NVR channels you have. If you have a 4 channel system, the maximum number of cameras you can have paired is 4.



- 6 If you have not exceeded the channel limitation, the new camera appears in a vacant video field once paired.



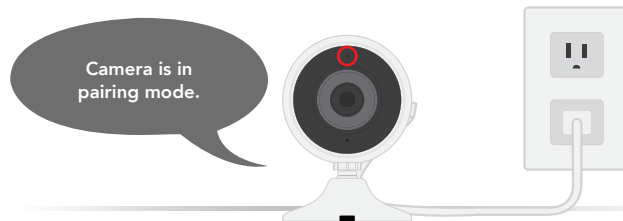
- 7 **WooHoo!** Your add-on camera has now been paired to the Wireless NVR using the Wireless NVR's built-in Wi-Fi.





## OPTION #1: B Pairing to existing Hybrid DVR System

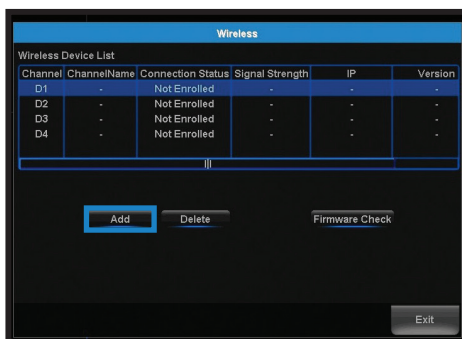
- 1 Power on the add-on camera using the camera power adapter. You will hear the camera say, "Camera is in pairing mode," and the status light flashes quickly. If the camera is not in pairing mode, please refer to page 10 for pairing instructions.



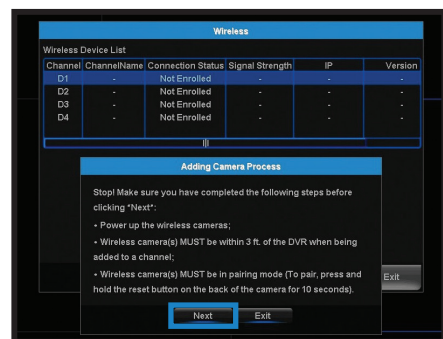
- 2 With the Hybrid DVR connected to a TV/Monitor, login, then left click on the "+" sign in one of the available wireless channels [D1-D4]. Notice that you will only see the "+" sign if there are wireless channels available.



- 3 When the following pop-up window opens, click "Add."

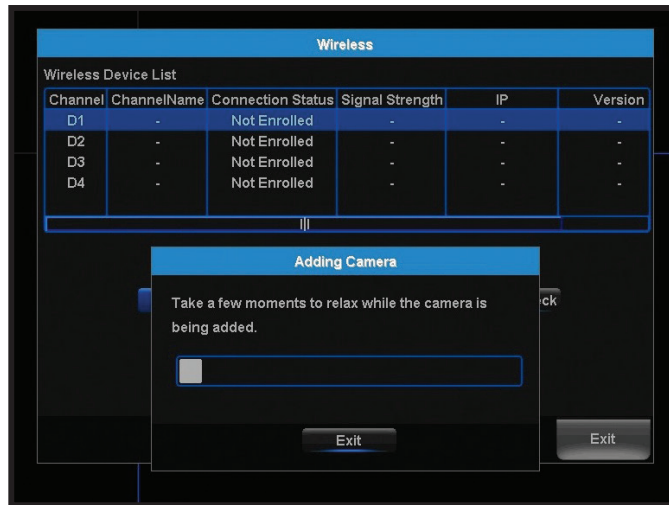


- 3A The following message appears with some additional pairing tips. Once you have checked everything is okay, choose "Next."

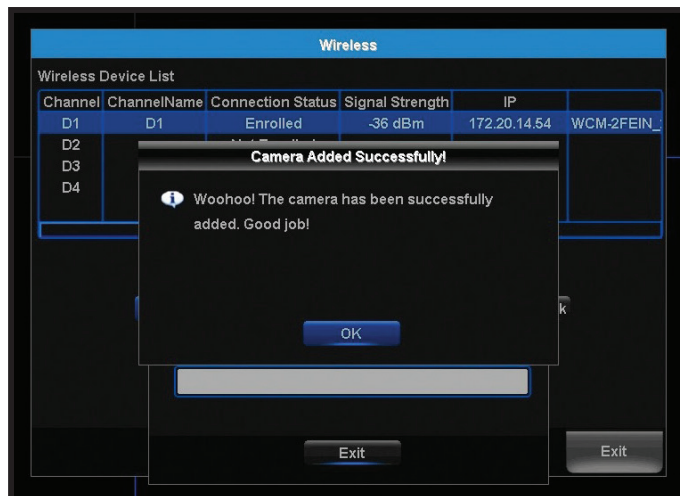




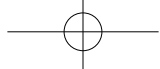
- 4 Please be patient while the camera is added to your Hybrid DVR.



- 5 Once the pairing process is complete, you will be notified the camera was successfully added. Choose "OK."







## OPTION #2: Standalone Camera Setup

---



Don't have a compatible system or want to use the camera on its own? No problem!

To use as a standalone camera, the following technical requirements must be met.

### Requirements

- Wi-Fi 2.4 GHz Router compatible with 802.11 b/g/n.
- High Speed Internet Connection with a minimum of 4 Mbps upload speed.
- Optional microSD Card needed to record (not included).

### To Use as a Standalone Camera:

- 1 Be in the same room as the router during setup, if possible.
- 2 Power on the camera using the camera power adapter.
- 3 Camera will be in pairing mode:
  - A Status light will flash quickly.
  - B Camera will say, "Camera is in pairing mode."

**Note:** If the camera is not in pairing mode, please refer to page 10 for pairing instructions.

- 4 Know the name and password of the Wi-Fi network being used.

**Note:** If you don't know your Wi-Fi password, please contact your Internet Service Provider (ISP). Night Owl will not be able to provide this information.





# Meet Night Owl Connect

## Download and Install Application

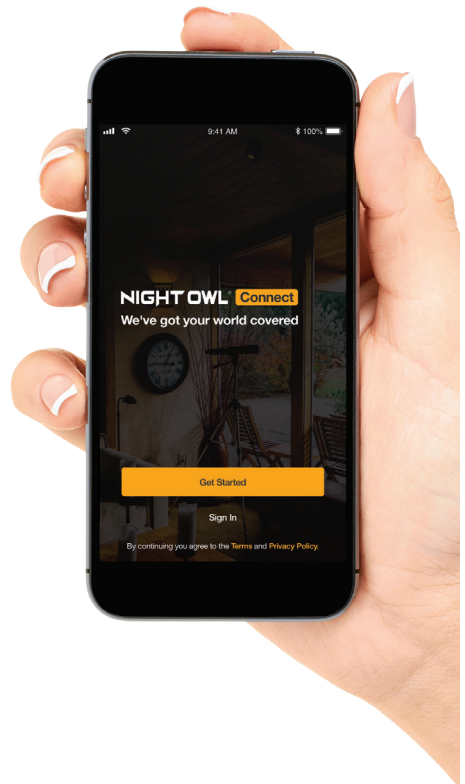
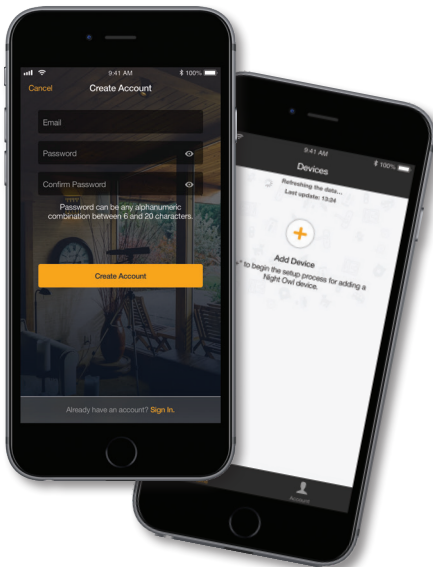
- 1 Download the Night Owl Connect Application from the "App Store" for iOS® devices or "Play Store" for Android™ devices.



- 2 Create a new account or login if you already have an existing account.

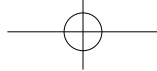
- 3 After completing the account setup and verification process, sign into the app and tap the + symbol to add a device.

**Note:** Setup is the same for Smartphone and Tablet.



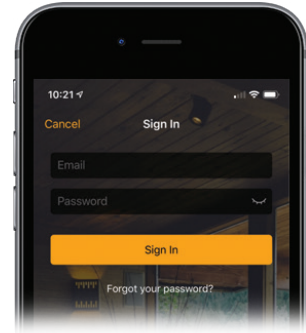
- 4 The Night Owl Connect App will guide you through the rest of the setup process.

**Note:** Need more help? Check out the Night Owl Support Site for videos and tutorials on setting up the Night Owl Panoramic Camera.

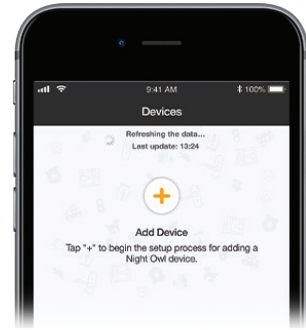


## Log into Night Owl Connect

- 1 Log into the App to complete the setup process. Camera should be in pairing mode (default mode). If the camera is not in pairing mode, please refer to page 10 for pairing instructions.



- 2 Click the plus symbol to begin setup. The App leads you through the rest of the setup process.

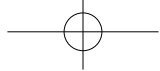


### Night Owl Connect CMS Software

The Night Owl Connect CMS Software allows you to view your Night Owl Security system remotely from a PC or Mac®. Additionally, you can playback recorded video, save video and images directly to your PC or Mac®, configure numerous settings such as channel names, and set record preferences.

#### To Download the CMS Software:

- 1 Go to **www.NightOwlSP.com**.
- 2 Click on the **Support** tab.
- 3 In the search bar, type "**Connect CMS**".
- 4 Download the **Night Owl Connect CMS** software.
- 5 Once downloaded, select **PC** or **Mac®**.



## Quick Tips

### To Pair the Camera:

Press and hold the "Sync/Reset" button until you hear the camera say, "Please be patient. Camera is resetting." Once the camera resets, the voice prompt says, "Camera is in pairing mode," and the Status light flashes quickly.



### Using a microSD Card:

#### Recommended Compatibility:

- Class 10, maximum space 128GB.
  - If a microSD card is used, video files will be stored on the microSD card (not included).



Slide microSD card into the camera.



## Need Help?

For system manuals, troubleshooting guides, FAQs, video tutorials and more:

- 1 Please visit [www.NightOwlSP.com](http://www.NightOwlSP.com).
- 2 Click the **Support** tab.
- 3 Enter your product's model number in the search bar.
- 4 Access the support material needed.

## Contact Us

### PHONE (English, Spanish & French)

Technical Support

1.866.390.1303

Live Chat 24/7, 365 days a year

Pre-Sales Support

1.866.979.0580

### EMAIL

Technical Support

[Support@NightOwlSP.com](mailto:Support@NightOwlSP.com)

Sales Support

[Sales@NightOwlSP.com](mailto:Sales@NightOwlSP.com)

### WEBSITE

24/7 Product Support

- How-To Videos
- Manuals

[www.NightOwlSP.com](http://www.NightOwlSP.com)



iPhone, iPad, Mac and Mac OS X are registered trademarks of Apple Inc.  
Windows, Windows XP, Windows Vista, Windows 7, Windows 8 and  
Windows 10 are registered trademarks of Microsoft Corporation in the  
United States and/or other countries.

### FCC RADIATION NORM

#### FCC

This device complies with Part 15 of the FCC Rules. Operation is subject to the following two conditions: (1) this device may not cause harmful interference, and (2) this device must accept any interference received, including interference that may cause undesired operation.

#### FCC Compliance Statement

These limits are designed to provide reasonable protection against frequency interference in residential installation. This equipment generates, uses, and can radiate radio frequency energy, and if not installed or used in accordance with the instructions, may cause harmful interference to radio communication. However, there is no guarantee that interference will not occur in television reception, which can be determined by turning the equipment off and on. The user is encouraged to try and correct the interference by one or more of the following measures:

- Reorient or relocate the receiving antenna.
- Increase the separation between the equipment and the receiver.
- Connect the equipment into an outlet on a circuit different from that to which the receiver is connected.
- Consult the dealer or an experienced radio/TV technician for help.

#### CAUTION!

The Federal Communications Commission warns the user that changes or modifications to the unit not expressly approved by the party responsible for compliance could void the user's authority to operate the equipment.

This equipment should be installed and operated with a minimum distance of 8 inches between the radiator and your body.

Rev 190625