

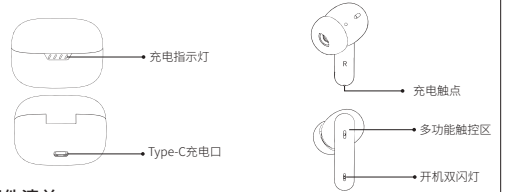
无线立体声耳机

使用说明书



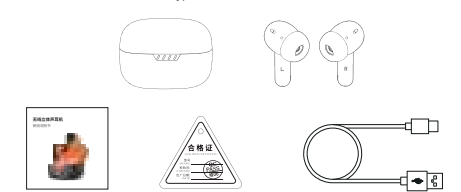
产品介绍

使用产品前请仔细阅读使用说明书。



配件清单

包装内含耳机一对、充电盒、合格证、Type-C充电线和说明书。



佩戴

将耳机从充电盒取出,按照耳机左右标识进行佩戴。

提示:使用完,请及时将耳机放回充电盒,以延长耳机使用寿命及防止丢失。

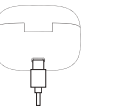
充电

• 为耳机充电:

将耳机放入充电盒,耳机自动进入充电状态。

• 为充电盒充电:

插入Type-C充电线,可同时给耳机和充电盒充电。充电时 LED 橙灯闪烁,充满橙灯常亮。



开机

确保充电盒有电并且耳机在充电盒内,打开充电盒将耳机取出,耳机会自动开机。

关机

- 耳机放入充电盒,关闭盒盖,耳机自动断连并开始充电,充满电后自动关机。
- 耳机进入配对状态且不在充电盒内,若5分钟内未连接到设备,耳机自动关机。

连接

首次连接

1. 请将蓝牙耳机和手机(或其他连接设备)的距离在1米的范围内,越近越好;
2. 打开充电盒,取出耳机自动开机并进入配对模式;
3. 开启手机蓝牙功能(或其他蓝牙设备),并进行搜索或扫描,此时手机会搜索到附近所有的蓝牙设备,点选搜索到的耳机名称:L11,成功配对连接后,此时可以进行手机电话、听歌。

连接其他设备

1. 耳机重置,可连接新设备。
2. 关闭当前连接设备的蓝牙,耳机放入充电盒内关盖重新开盖后,可在新设备(无配对记录)上搜索并连接耳机。

自动回连

在连接范围内,开机后自动连接已配对过的蓝牙设备。

连接断连

在连接设备的情况下,当设备关闭蓝牙、超出耳机连接范围或将左右耳机入盒并关盖,耳机即断连。

基本参数

产品型号:L11	产品名称:无线立体声耳机
耳机基本参数	充电盒基本参数
通讯距离:10米(无障碍空旷环境)	充电接口:Type-C
无线连接:蓝牙™5.4	输入参数:DC5V 300mA

功能介绍

提示: 1. 户外天气寒冷手变干燥后,触摸耳机可能会失灵。
2. 由于设备多功能触控区感应灵敏,取放耳机过程中如误触该区域,可能触发已配对的蓝牙设备执行播放/暂停功能。



- **通话**
接听来电:来电时双击多功能键(任意一个耳机)
挂断电话:通话中双击多功能键(任意一个耳机)
拒接电话:来电时长按任意耳机多功能键2秒
- **音乐**
上一曲:三击左耳机多功能键
下一曲:三击右耳机多功能键
播放/暂停:播放音乐时,双击任意耳机多功能键暂停,再次双击播放。
音量减:单机左耳多功能键
音量加:单机右耳多功能键
- **其他**
语音助手:四击任意一侧多功能键

安全信息

使用和操作设备前,请阅读并遵守以下注意事项,确保设备性能最优化,避免出现危险或非法情况。

- 产品信息和认证标志位于充电盒内和耳机上。
- 为了防止可能出现的听力损伤,请勿长时间用高音量使用本产品。
- 为避免干扰医疗仪器工作,使用本设备时,请与植入式医疗设备或个人医疗设备(如起搏器,植入耳蜗、助听器等)保持至少15厘米的距离,并向医师或其制造商咨询本设备的限制条件。
- 请使用产品随附的充电线进行充电。若使用电源适配器充电时,应使用满足相应安全标准要求的电源适配器或是获得 CCC 认证的电源适配器。
- 请勿将产品拆解、撞击、挤压或投入火中,可能会导致爆炸。
- 产品内含不可拆卸的锂电池,请勿自行更换电池,以免损坏电池或设备。电池只能由授权服务中心更换且必须更换相同型号的电池,更换不正确型号的电池,会破坏防护措施(如起火、爆炸、电池漏液等)。若电池出现严重鼓胀,请勿继续使用。
- 请勿将电池投入火中或高温烤箱中,或以机械方式碾压或切割电池,可能会导致电池爆炸。
- 请勿将电池暴露在诸如日照、火烤或烤箱类似过热环境中,可能会导致电池起火、爆炸。
- 请勿将电池置于极高温或极低气压环境下,可能会导致爆炸或易燃液体或气体泄漏。
- 请勿将旧电池扔进生活垃圾中,应按当地法律法规要求处理本设备及废旧电池。
- 本产品并非玩具,产品本体及配件内含小部件可能会造成孩童窒息或导致其他伤害,请将产品放置在孩童接触不到的地方。
- 如接触部位皮肤出现红肿等症状时,请立即停止使用并咨询医生。
- 符号表示直流电压。

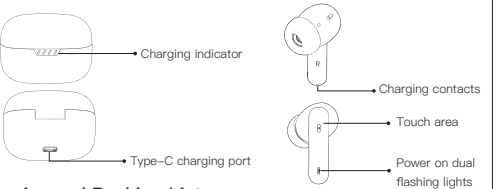
TWS EARPHONES

User's Guide



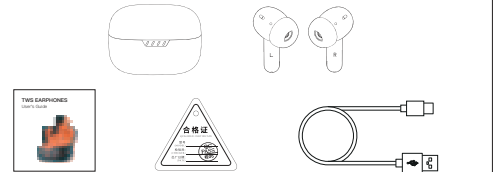
Product description

Please read the instruction manual carefully before using the product.



Overview and Packing List

The package includes a pair of headphones, a charging box, certificate, Type-C charging cable and instructions.



Wear

Take the earphones out of the charging box and put them on according to the left and right marks on the earphones.

Tip: After use, please put the earphones back into the charging box in time to extend the service life of the earphones and prevent loss.

Charge

• To charge your headphones:

Put the earphones into the charging box and automatically enter the charging state.

• To charge the charging case:

Plug in the Type-C charging cable to charge the earphones and charging box at the same time. When charging, the LED orange light flashes and remains on when fully charged.



Power on

Make sure the charging box has power and the earphones are in the charging box. Open the charging box and take out the earphones. The earphones will turn on automatically.

Shut down

- Put the earphones into the charging box and close the lid. The earphones will automatically disconnect and start charging. They will automatically shut down when fully charged.
- The headset enters the pairing state and is not in the charging box. If it is not connected to the device within 3 minutes, the headset will automatically shut down.

Connect

First time connectio

- Please keep the distance between Bluetooth earphones and mobile phones (or other connecting devices) within a range of 1 meter, the closer the better;
- Open the charging case, remove the earphones and automatically turn them on and enter pairing mode;
- Turn on the Bluetooth function of the phone (or other Bluetooth devices) and search or scan. At this time, the phone will search for all nearby Bluetooth devices. Click on the name of the earbuds found: L11, and after successfully pairing and connecting, you can make phone calls and listen to music.

Connect other devices

- The headset is reset and can be connected to new devices.
- Turn off the Bluetooth of the currently connected device, put the earphones into the charging box, close the cover and reopen it, and then you can search for and connect the earphones on the new device (without pairing record).

Automatic reconnection

Within the connection range, it will automatically connect to paired Bluetooth devices after powering on.

Disconnected

When a device is connected, the headphones will be disconnected when the device turns off Bluetooth, goes beyond the headphone connection range, or puts the left and right headphones into the case and closes the cover.

Basic parameters

Product model: L11

Headphone parameters

Communication distance: 10 meters

Wireless connectivity: Bluetooth Version: 5.4

Product name: TWS Earphones

Charging box parameters

Charging interface: Type-C

Input parameters: DC5V 300mA

Features

Hint:

- The earphones may malfunction when you touch them when your hands become dry due to cold weather outdoors.
- Since the multi-function touch area of the device is sensitive, if you accidentally touch this area when picking up and placing the headphones, it may trigger the paired Bluetooth device to perform the play/pause function.

• Call

Answer an incoming call:

Double click on any multifunctional key when an incoming call comes in

Hang up the call:

Double click on any multifunctional key during a call

Reject a call:

Hold down the multifunction key on any headset for 2 seconds when an incoming call comes in

• Music

Previous song:

Three click left earphone multifunctional key

Next song:

Three click right earphone multifunctional key

Play/Pause:

When playing music, click any headset multi-function button to pause, and click again to play.

Volume reduction: Double click on the left ear

Volume increase: Double click on the right ear

• Other

Voice Assistant:

Four strikes on either side of the multifunctional key

Security Information

Before using and operating the equipment, please read and comply with the following precautions to ensure optimal equipment performance and avoid dangerous or illegal situations.

- Product information and certification marks are located inside the charging box and on the earphones.
- To prevent possible hearing damage, do not use this product at high volume for long periods of time.
- To avoid interfering with the work of medical instruments, when using this device, please keep at least 15 cm away from implanted medical devices or personal medical devices (such as pacemakers, cochlear implants, hearing aids, etc.) and inform your physician or its manufacturer Ask about the limitations of this device.
- Please use the charging cable provided with the product to charge. If you use a power adapter to charge, you should use a power adapter that meets the requirements of the corresponding safety standards or a power adapter that has obtained CCC certification.
- Do not disassemble, hit, crush or throw the product into fire, as it may cause an explosion.
- The product contains a non-removable battery. Please do not replace the battery yourself to avoid damage to the battery or equipment. The battery can only be replaced by an authorized service center and must be replaced with the same type of battery. Replacing an incorrect type of battery will destroy protective measures (such as fire, explosion, battery leakage, etc.). If the battery is severely bulging, do not continue to use it.
- Do not put the battery into fire or high-temperature oven, or mechanically crush or cut the battery, as the battery may explode.
- Do not expose the battery to overheating environments such as sunlight, fire or oven, as this may cause the battery to catch fire or explode.
- Do not expose the battery to extremely high temperatures or extremely low pressure, as this may cause explosion or leakage of flammable liquids or gases.
- Do not throw old batteries into domestic garbage. Dispose of this device and used batteries in accordance with local laws and regulations.
- This product is not a toy. The product body and accessories contain small parts that may cause suffocation or other injuries to children. Please keep the product out of the reach of children.
- If symptoms such as redness and swelling appear on the skin of the contact area, please stop using it immediately and consult a doctor.
- The symbol represents DC voltage.

FCC Statement

Changes or modifications not expressly approved by the party responsible for compliance could void the user's authority to operate the equipment.

This equipment has been tested and found to comply with the limits for a Class B digital device, pursuant to Part 15 of the FCC Rules. These limits are designed to provide reasonable protection against harmful interference in a residential installation. This equipment generates uses and can radiate radio frequency energy and, if not installed and used in accordance with the instructions, may cause harmful interference to radio communications. However, there is no guarantee that interference will not occur in a particular installation. If this equipment does cause harmful interference to radio or television reception, which can be determined by turning the equipment off and on, the user is encouraged to try to correct the interference by one or more of the following measures:

- Reorient or relocate the receiving antenna.
 - Increase the separation between the equipment and receiver.
 - Connect the equipment into an outlet on a circuit different from that to which the receiver is connected
 - Consult the dealer or an experienced radio/TV technician for help
- This device complies with part 15 of the FCC rules. Operation is subject to the following two conditions (1) this device may not cause harmful interference, and (2) this device must accept any interference received, including interference that may cause undesired operation.
- This equipment complies with FCC radiation exposure limits set forth for an uncontrolled environment.