



Figure 1: NP12 PRI/PAB/SAB RF ANT FRAME TWO HALVES

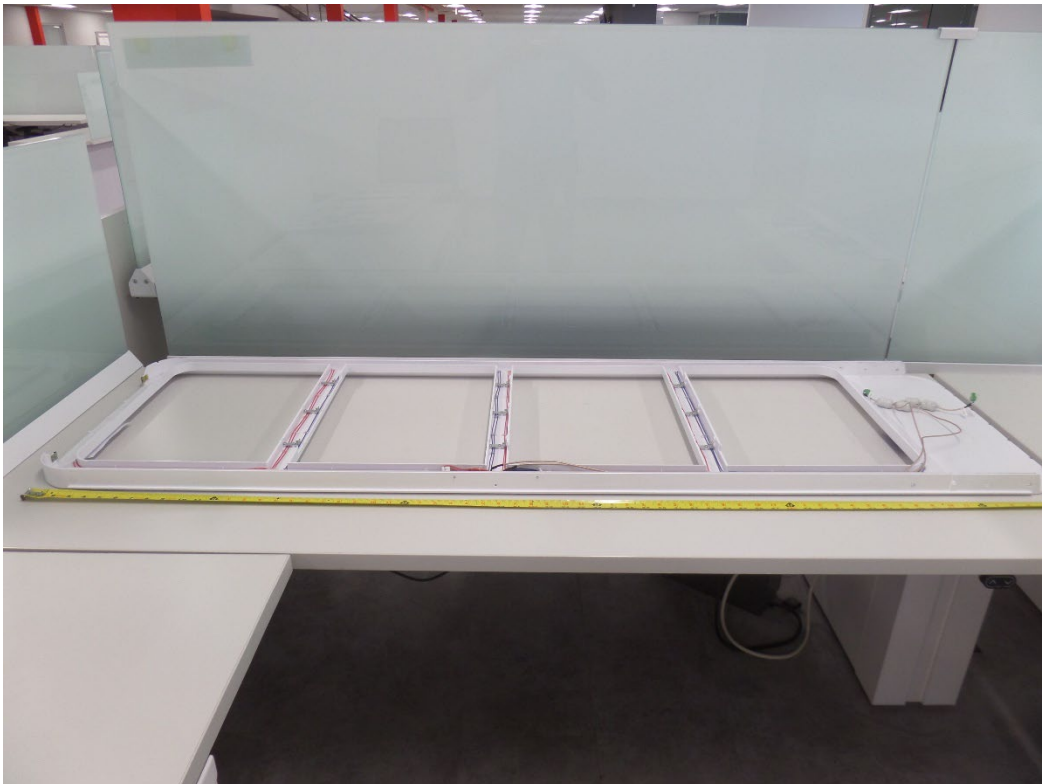


Figure 2: NP12 PRI/PAB/SAB RF ANT FRAME BACK SIDE

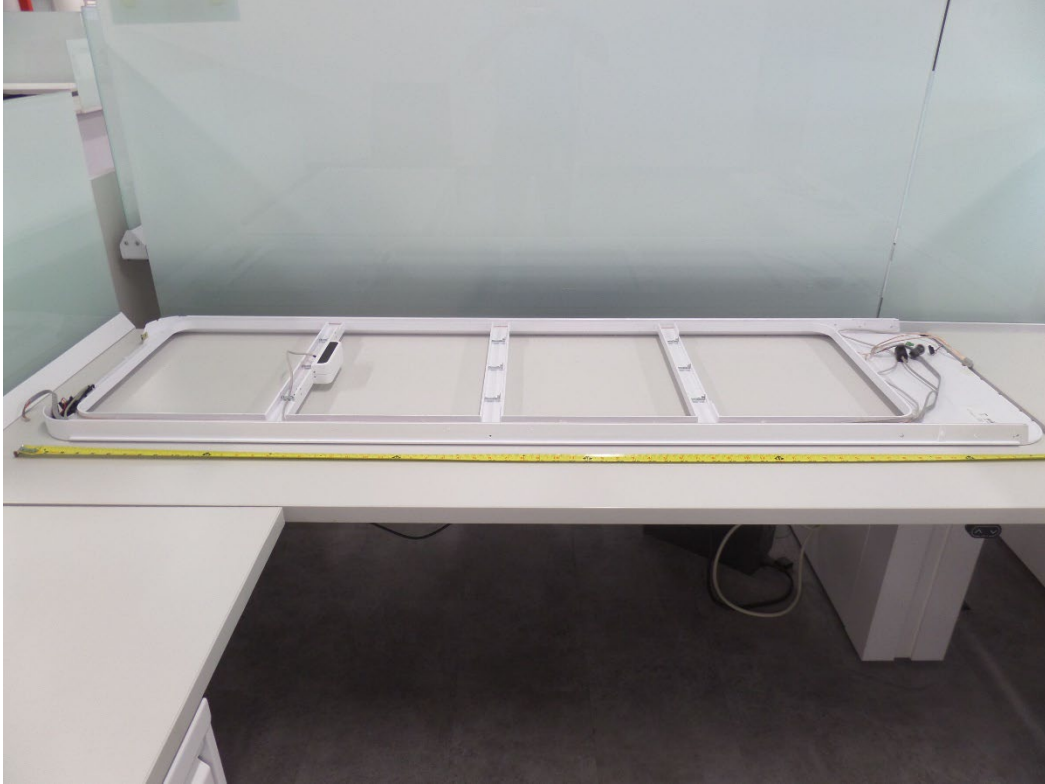


Figure 3: NP12 PRI/PAB/SAB RF ANT FRAME FRONT SIDE

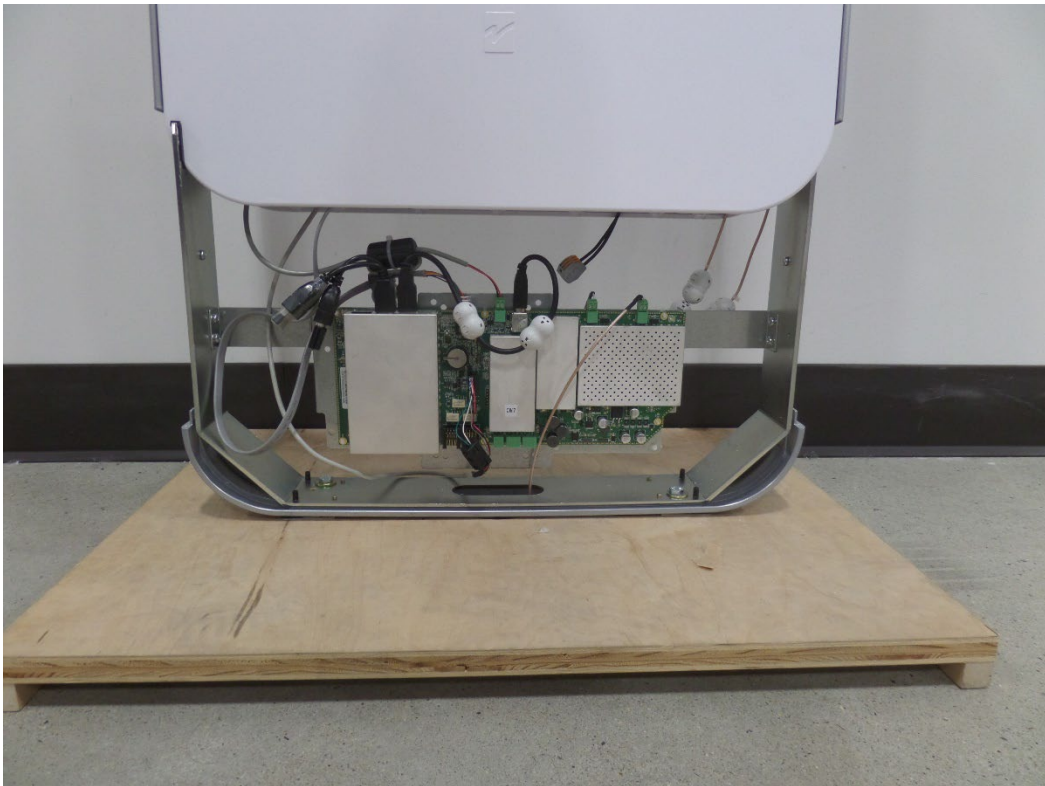


Figure 4: NP12 PRI/PAB LOWER BASE FRONT SIDE

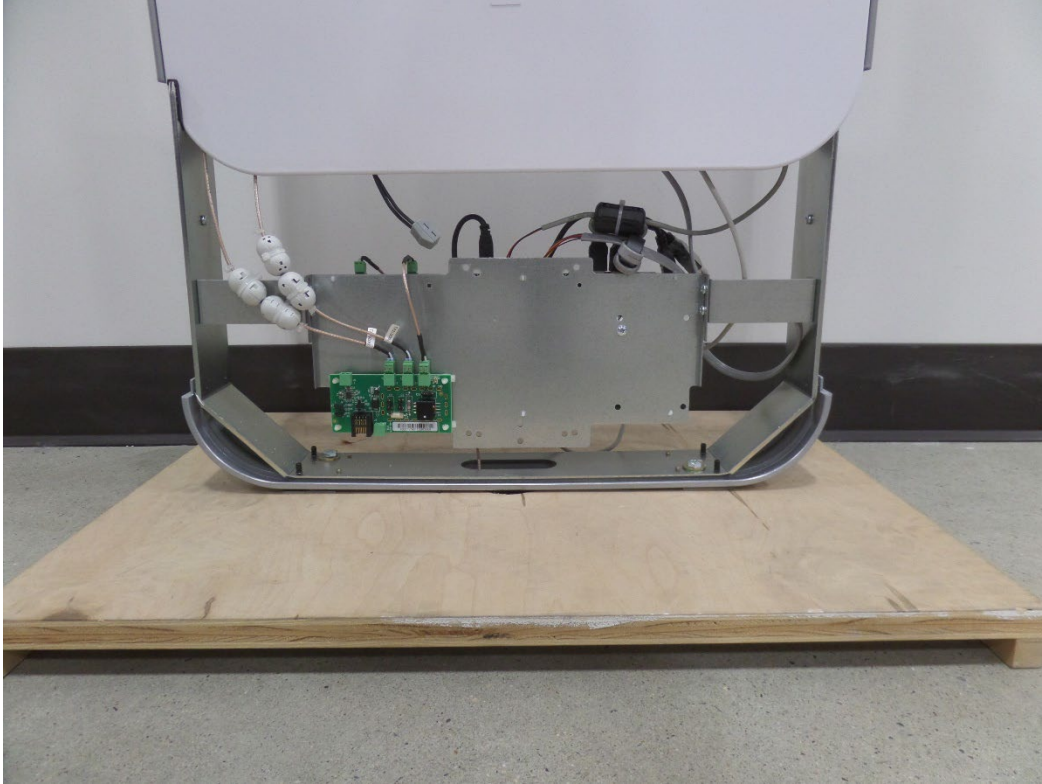


Figure 5: NP12 PRI/PAB LOWER BASE BACK SIDE

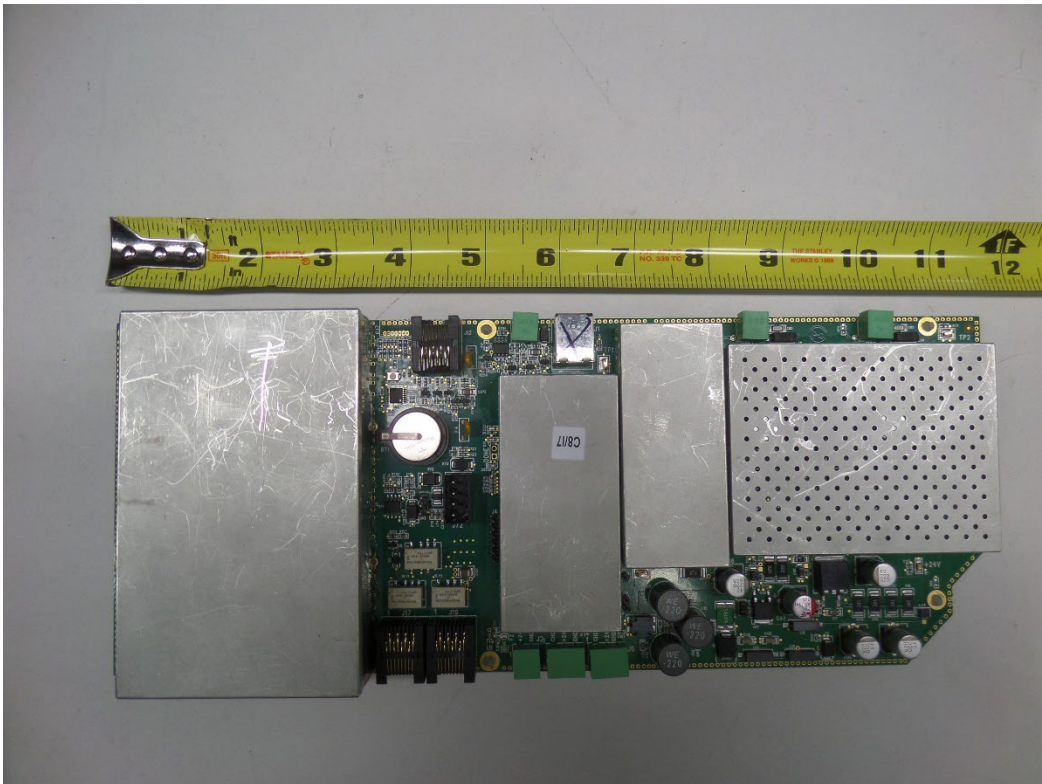


Figure 6: NP12 PRI/PAB LOWER BASE EAS RF BOARD TOP SIDE



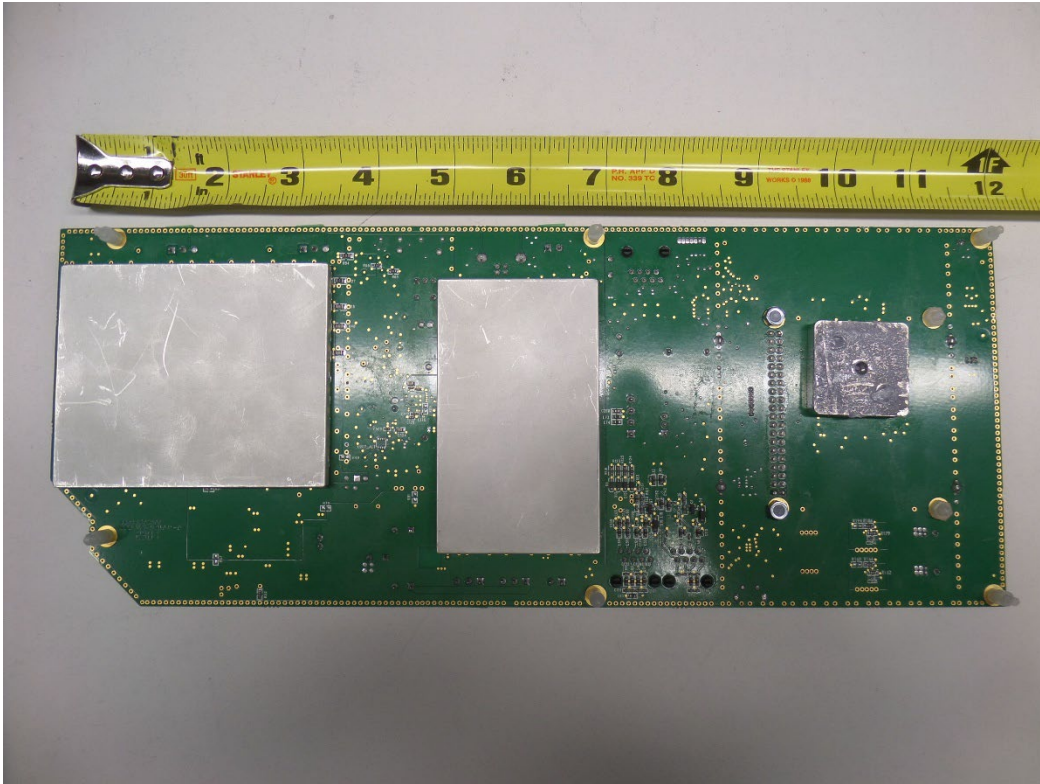


Figure 7: NP12 PRI/PAB LOWER BASE EAS RF BOARD BOTTOM SIDE

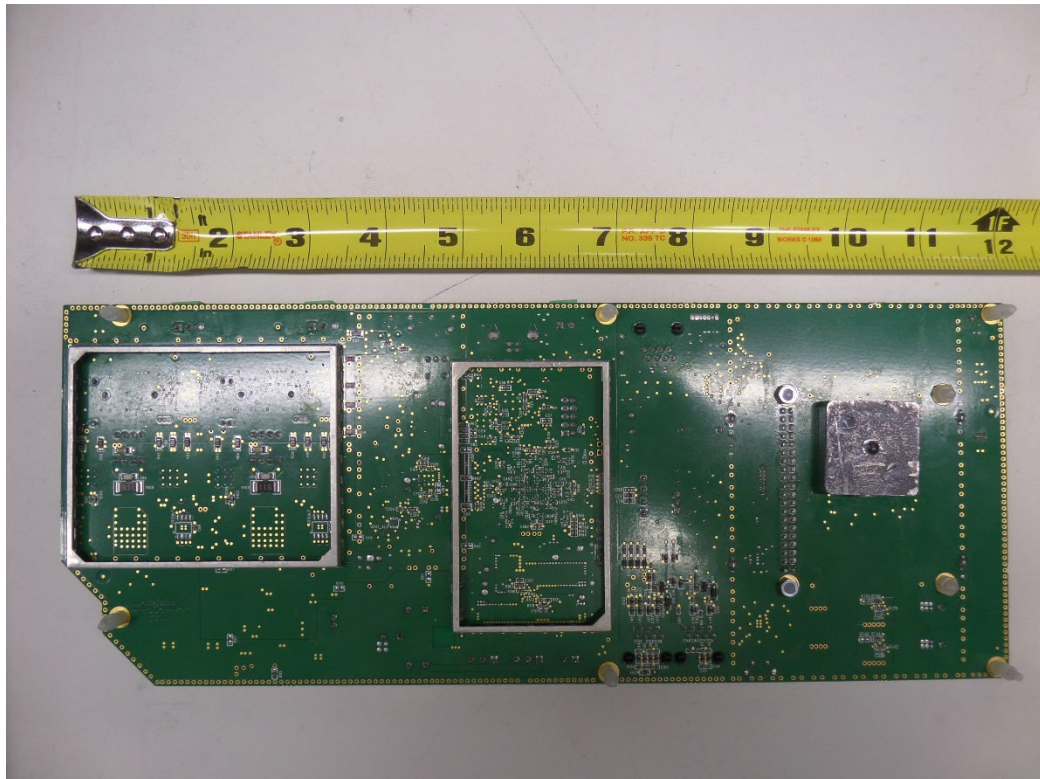


Figure 8: NP12 PRI/PAB LOWER BASE EAS RF BOARD BOTTOM SIDE WITHOUT SHIELDS

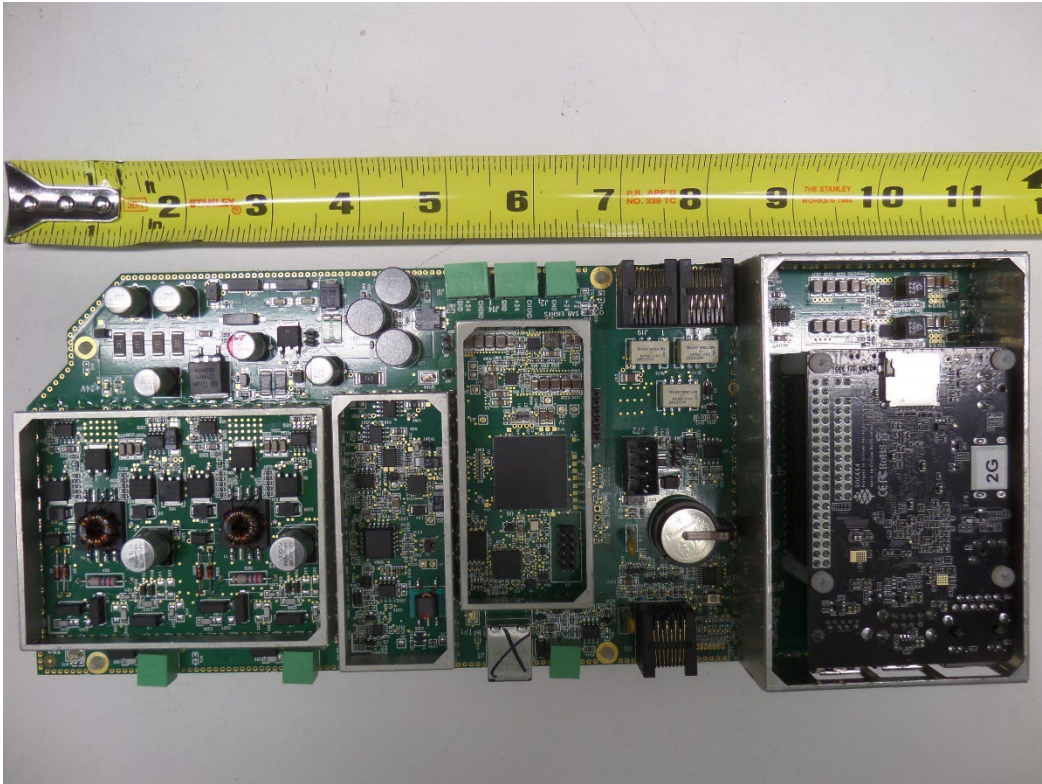


Figure 9: NP12 PRI/PAB LOWER BASE EAS RF BOARD TOP SIDE WITHOUT SHIELDS

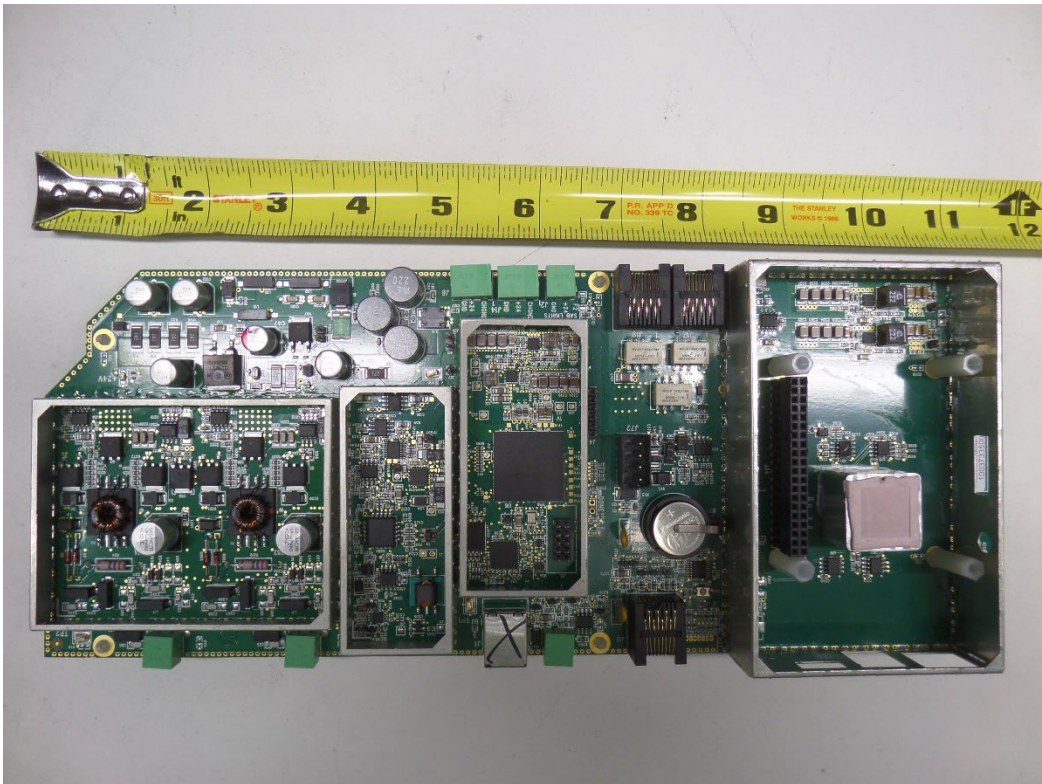


Figure 10: NP12 PRI/PAB LOWER BASE EAS RF BOARD TOP SIDE ROCK64 BOARD REMOVED



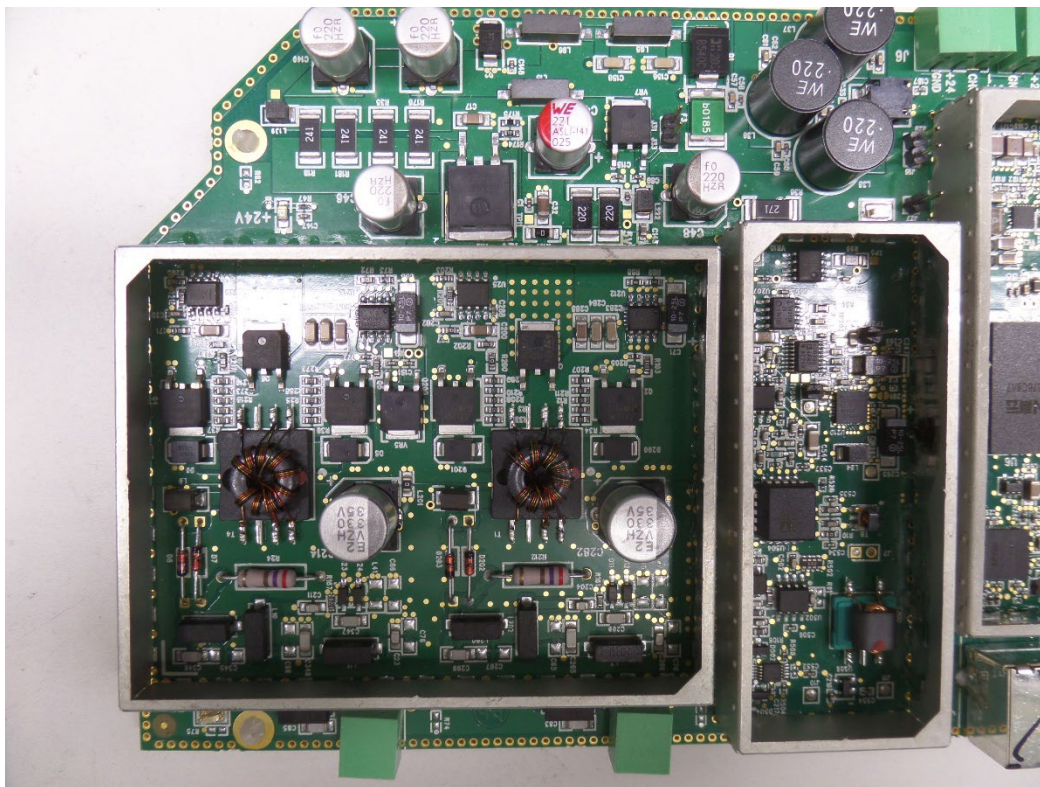


Figure 11: NP12 PRI/PAB LOWER BASE EAS RF BOARD TOP SIDE RF SECTION

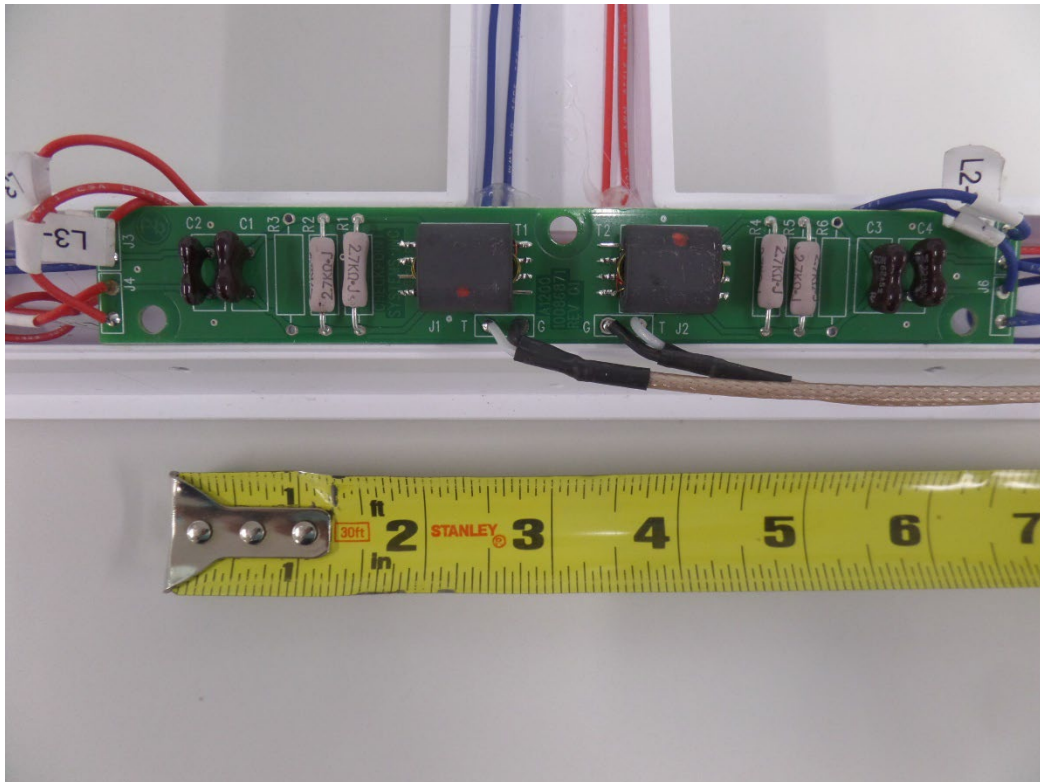


Figure 12: NP12 PRI/PAB/SAB RF ANT FRAME MATCHING BOARD TOP SIDE

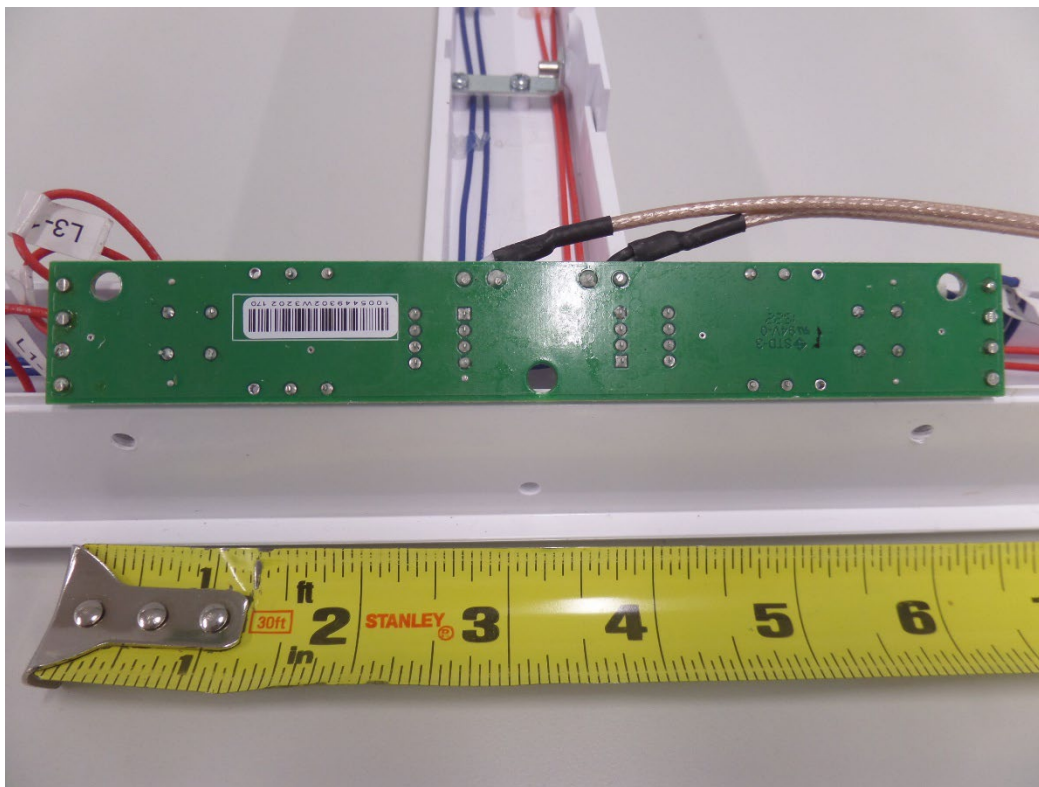


Figure 13: NP12 PRI/PAB/SAB RF ANT FRAME MATCHING BOARD BOTTOM SIDE

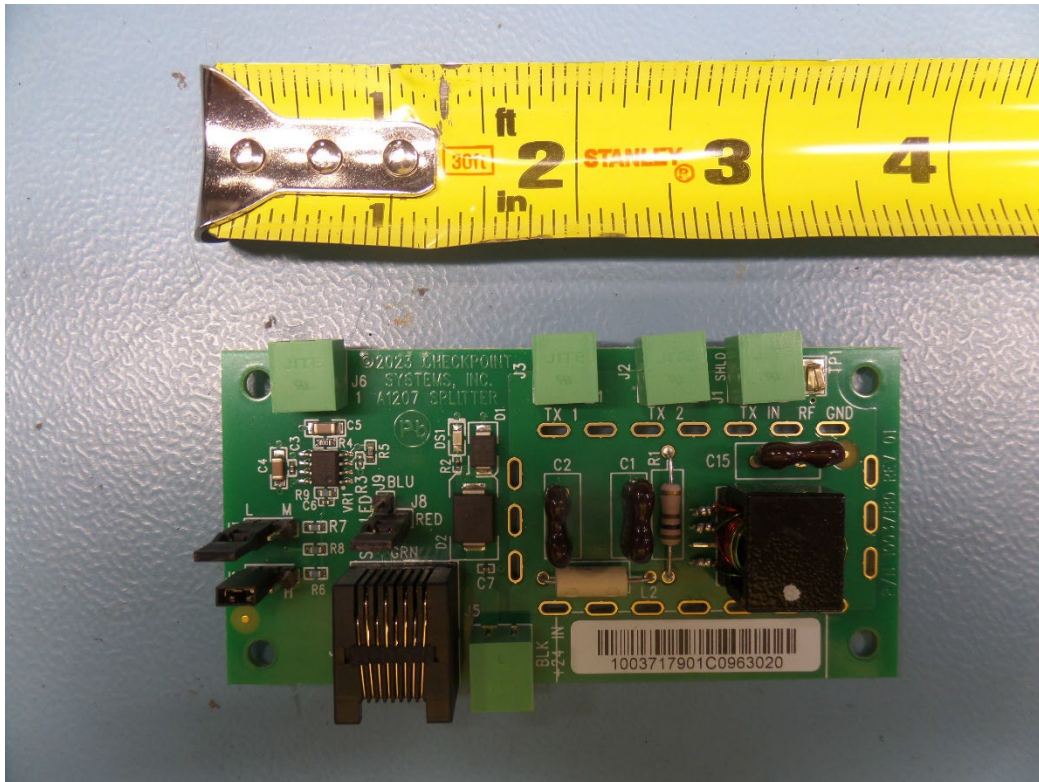


Figure 14: NP12 PRI/PAB, NP12 SAB SPLITTER BOARD TOP SIDE



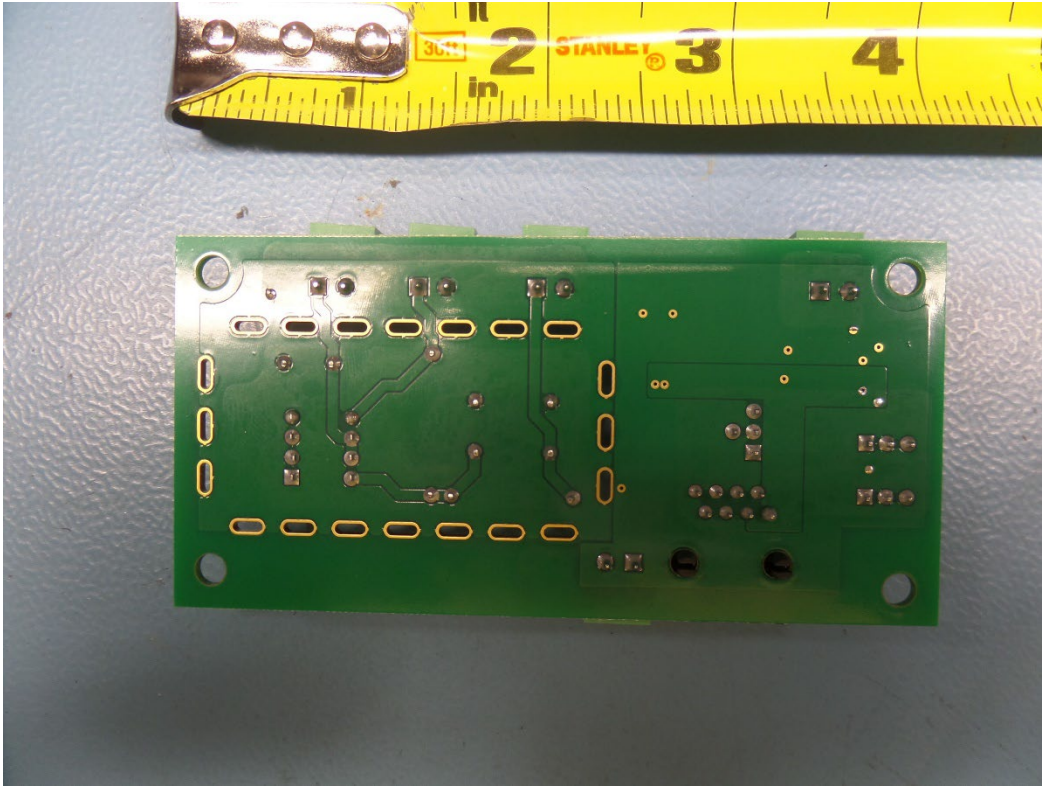


Figure 15: NP12 PRI/PAB, NP12 SAB SPLITTER BOARD BOTTOM SIDE

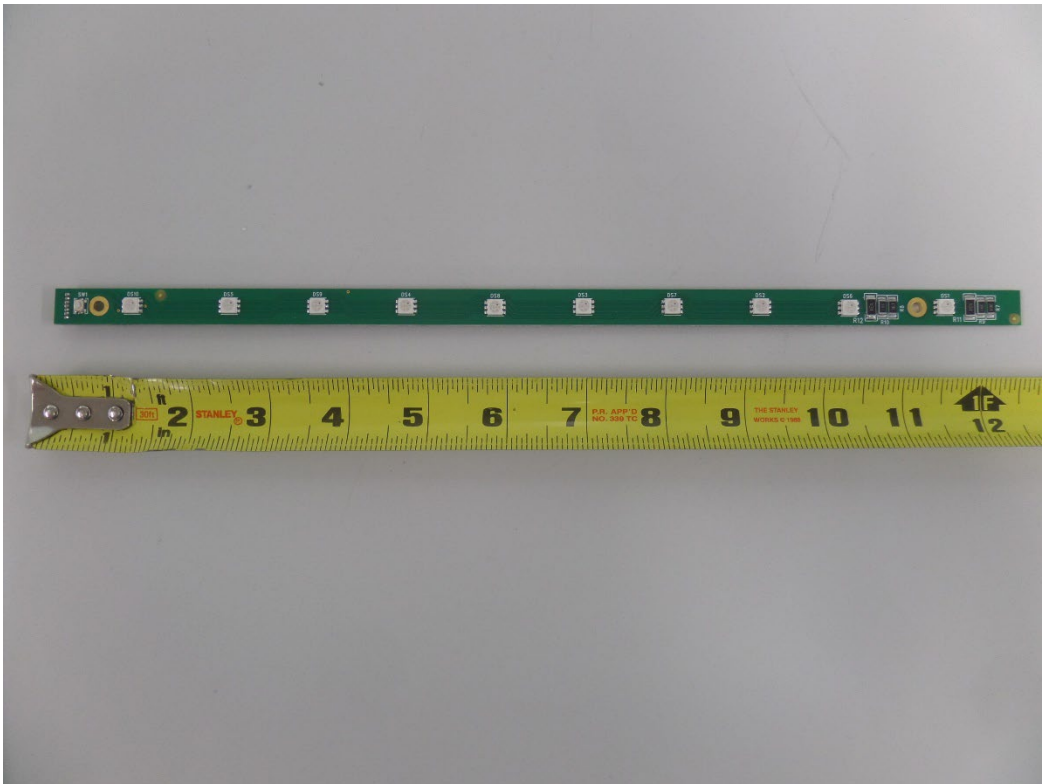


Figure 16: NP12 PRI/PAB/SAB RF ANT FRAME LED BOARD TOP SIDE



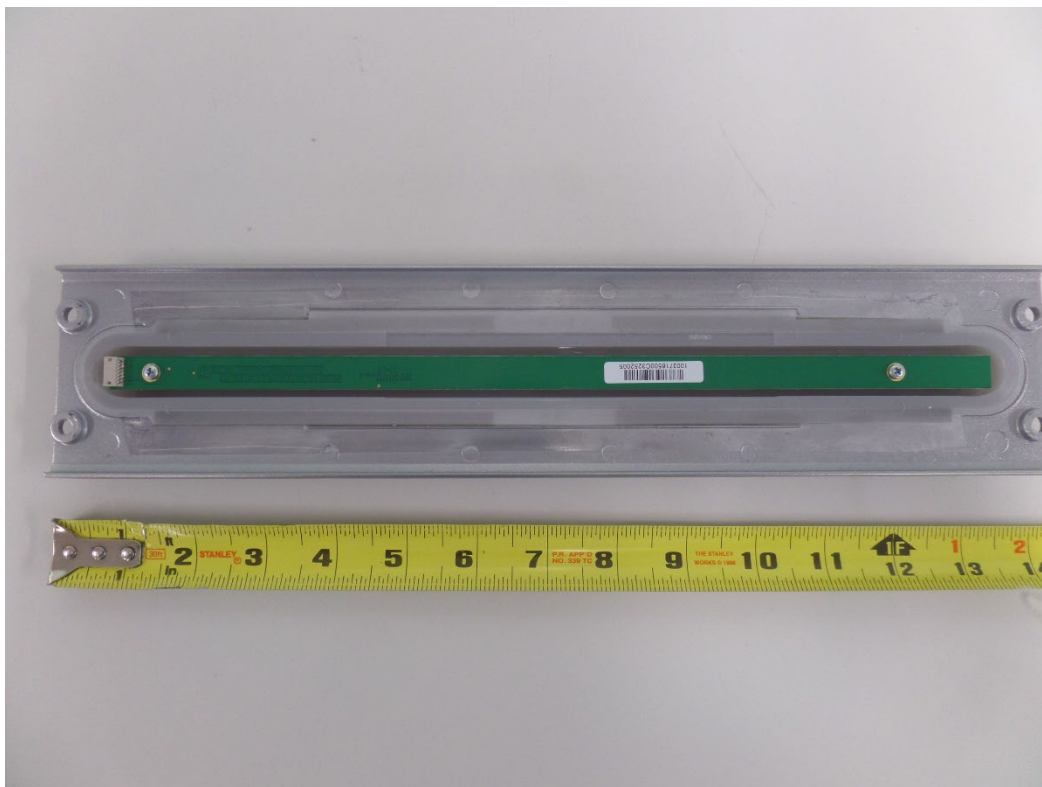


Figure 17: NP12 PRI/PAB/SAB RF ANT FRAME LED BOARD BOTTOM SIDE

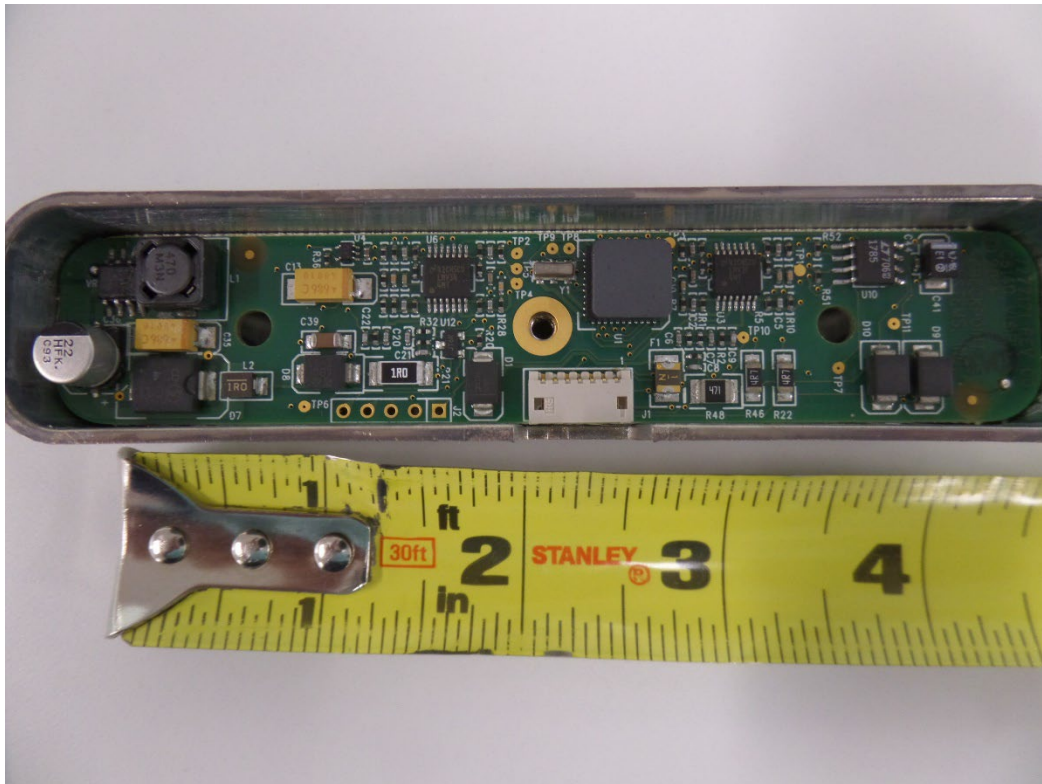


Figure 18: NP12 PRI/PAB/SAB RF ANT FRAME VISIPLUS BOARD TOP SIDE

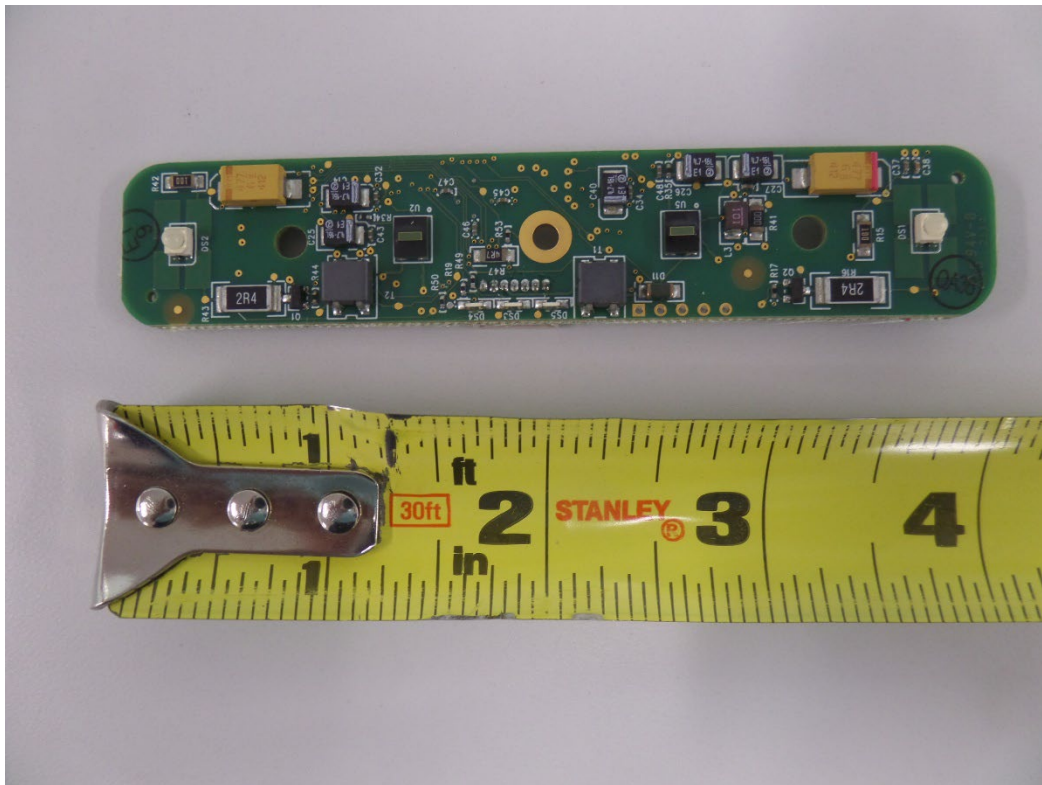


Figure 19: NP12 PRI/PAB/SAB RF ANT FRAME VISIPLUS BOARD BOTTOM SIDE

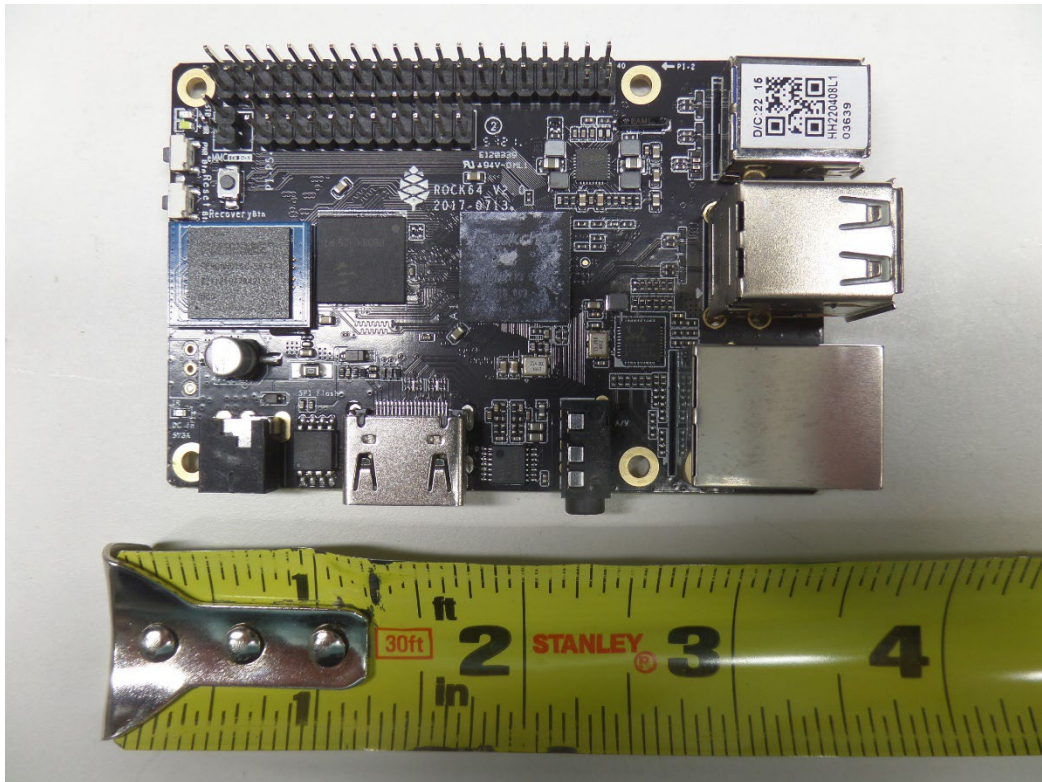


Figure 20: NP12 PRI/PAB LOWER BASE ROCK 64 BOARD TOP SIDE



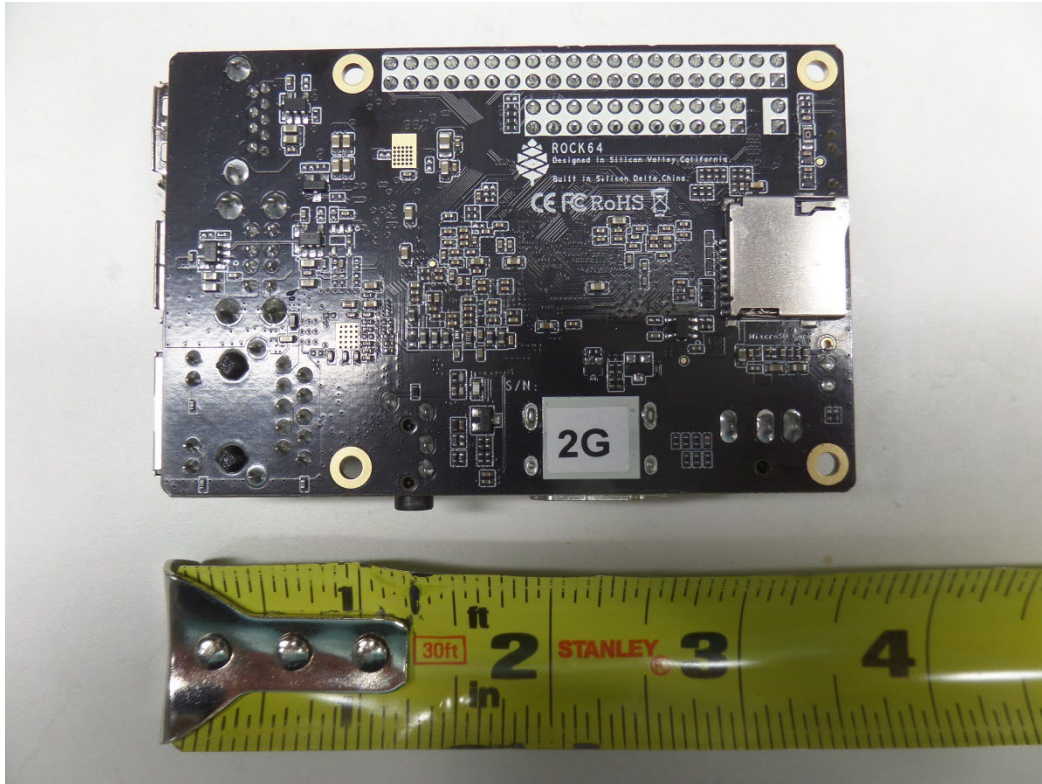


Figure 21: NP12 PRI/PAB LOWER BASE ROCK 64 BOARD BOTTOM SIDE