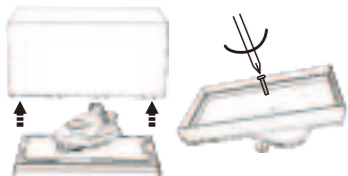




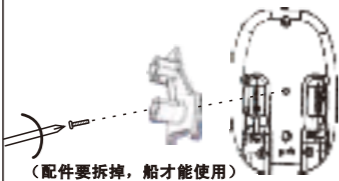
## 使用说明书

请在使用前详细阅读本使用说明书。请保管好本说明书以备不时之用。

### 准备

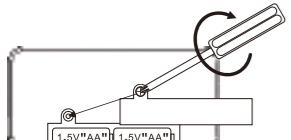


1: 撕开贴纸, 将透明盖子拿出, 用十字螺丝刀按逆时针方向拧开塑料底座螺丝, 取出赛艇。

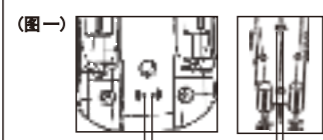


2: 用十字螺丝刀按逆时针方向拧开固定赛艇配件的螺丝, 取出配件。

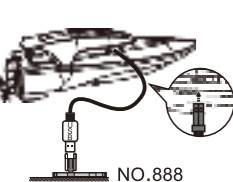
### 遥控



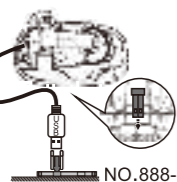
用十字螺丝刀按逆时针方向拧开电池盖螺丝, 遥控器使用2颗5号电池。



(图一)  
接触点 (放入水中通电)  
接触点 (放入水中通电)



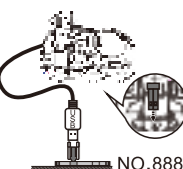
NO.888



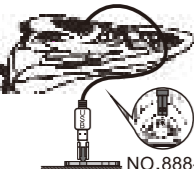
NO.888-1



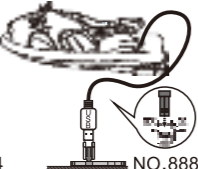
NO.888-2



NO.888-3



NO.888-4



NO.888-5

### 充电

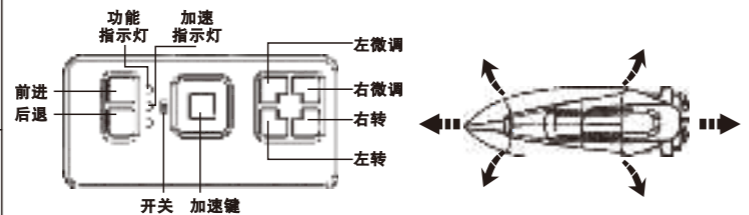
1. 取出USB充电插头, 把充电插头插进赛艇的充电接口, 充电指示灯亮, 表示充电进行中。当充电指示灯自动熄灭, 表示充电完成, 充满电后, 可以玩耍约8-12分钟。

### 操作

1: 遥控器按键功能:

- (1): 打开遥控器电源开关, 功能指示灯会一直闪烁, 处于对频状态, 赛艇通电后 (如图一), 完成对频, 对频完成后功能指示灯会熄灭。按下功能键, 指示灯会亮起, 放开功能键, 指示灯会熄灭。
- (2): 当按前进/后退按键时, 赛艇可前进/后退。
- (3): 当按前进按键, 同时按住左转/右转按键时, 赛艇可前进左/右。
- (4): 单独按左/右按键, 赛艇会左/右原地旋转。单独按右/左按键, 赛艇会右/左原地旋转。
- (5): 当按左微调/右微调按键时, 可以调节赛艇的直线行驶性能。
- (6): 当遥控器三声提示音响起, 可以按下加速键, 赛艇将激活100%动能, 直线快速冲刺。遥控器两声提示音响起, 加速功能结束, 只能等待下次提示三声提示音响起才可再次加速。
- (7): 当遥控器提示音响起警报长达10-20秒时, 船处于低电状态, 请及时给船充电。

2: 使用时, 先将遥控器电源开关打开, 再将赛艇放到水中, 接触点接触水源, 此时赛艇通电, 赛艇指示灯闪烁表示已通电, 处于对频中, 对频完成后, 指示灯长亮。手不要放在螺旋桨附近, 防止螺旋桨高速旋转时伤人, 并确认螺旋桨周围没有障碍物。如果停止使用时, 请将赛艇从水中拿出, 用布擦干放好。赛艇离开水面擦干后, 会处于断电状态, 赛艇螺旋桨停止旋转。



### 注意

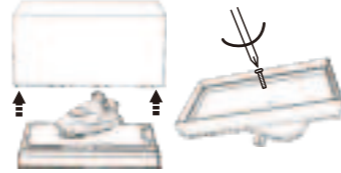
- 赛艇使用3.7V可充电锂电池 (内置电池), 遥控器使用2节1.5V "AA" 电池;
- 安装或更换电池时请注意极性;
- 非充电电池不可充电;
- 当给充电电池充电时, 需要成人监护;
- 不可使用新旧或不同类型的电池;
- 电源端子不应短路;
- 当赛艇速度减慢时, 说明赛艇电量不足, 请将赛艇按以上方法充电即可;
- 当遥控器电池电量不足, 指示灯变暗或不亮, 请更换新电池;
- 充电时请认准充电插头和充电接口方向;
- 拆包装时在成人的指导下进行;
- 保留本使用说明书以供日后参考;
- 遥控器长时间不使用时, 请取出遥控器内的电池;
- 船长时间不使用时, 请给船充电后再存放, 这样使船的电池寿命时间更持久。



## OPERATING INSTRUCTION

Please read this manual carefully before use. Please keep this manual for future use.

### PREPARE



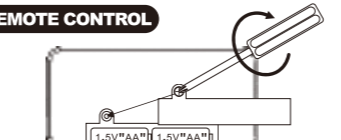
1. Tear off the sticker, take out the transparent cover, use a cross screwdriver to unscrew the plastic base screws counterclockwise, and remove the racing boat.

(the fittings have to be removed before the boat can be used)



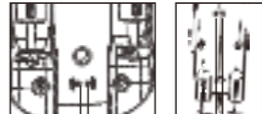
2. Use a cross screwdriver to unscrew the screws which holding the racing boat accessory counterclockwise, and remove the accessory

### REMOTE CONTROL

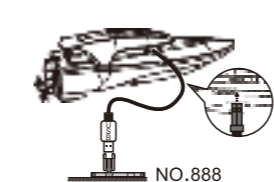


Use a cross screwdriver to unscrew the battery cover screws counterclockwise. The remote controller uses 2 pieces of 5# batteries.

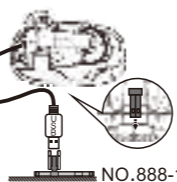
### (Chart 1)



CONTACT POINT (ELECTRIFY BY PUTTING IN WATER)  
CONTACT POINT (ELECTRIFY BY PUTTING IN WATER)



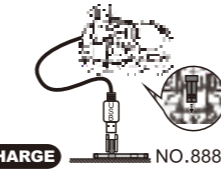
NO.888



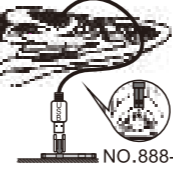
NO.888-1



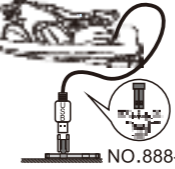
NO.888-2



NO.888-3



NO.888-4



NO.888-5

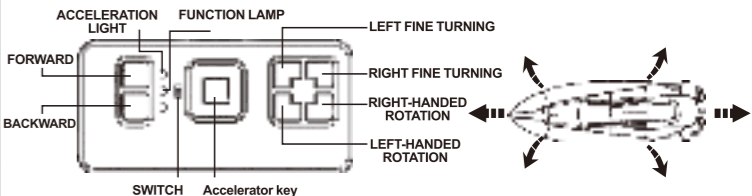
### CHARGE

Take out the USB charging plug, plug the charging plug into the charging interface of the boat, the charging indicator light is on, indicating that the charging is in progress. When the charging indicator light automatically goes off, indicating that the charging is complete, after full charge, you can play for about 8-12 minutes.

### OPERATION

1. Function of controller button
- (1) Turn on the controller, the function indicator light will keep flashing and will be in the state of frequency matching. When the boat is energized (see chart 1), the frequency matching will be completed and the function indicator light will be OFF. Press the function key, the indicator light will be ON, release the function key, the indicator light will be OFF.
- (2) The boat can go forward/backward when the forward/backward button is pressed.
- (3) When pressing the forward button and holding down the left/right turn button, the boat can make forward left/right turn.
- (4) Press the left turn button alone, the boat will turn left on the spot. Press the right turn button alone, the boat will turn right on the spot.
- (5) When pressing the left fine turning/right fine turning button, you can adjust the linear performance of the boat.
- (6) When the remote control sounds for three prompts, you can press the acceleration button, and the boat will activate 100% kinetic energy and sprint in a straight line. When the remote control sounds for two prompts, the acceleration function ends, and you can only accelerate again until the next three prompts sound.
- (7) When the remote control prompts the sound alarm for 10-20 seconds, the ship will be in low power state, please charge the ship in time.

1. When in use, turn on the power switch of the controller first, then put the boat into the water and contact the water at the contact point. At this point, the boat is energized. The indicator light of the boat flashes to indicate that it has been energized. Do not place your hands near the propeller to prevent injury when the propeller is rotating at high speed, and make sure there are no obstacles around the propeller. If not in use, take the boat out of water, dry it with a cloth and put it away. After the boat is dried off from the water, the power is cut off and the propeller stops spinning.



### CAUTION

- The boat uses 3.7V rechargeable lithium battery (built-in battery), the controller uses 2X1.5V "AA" batteries;
- Pay attention to polarity when installing or replacing batteries;
- Not recharge non-rechargeable batteries
- Adult supervision is required when recharging batteries
- Never mix different types of batteries, or new and used batteries
- Power terminals should not be short-circuited
- When the speed of boat slows down, it means that the power of the boat is insufficient, Please charge the boat according to the above methods.
- When the battery of the remote control is low and the indicator light is dark or not bright, Please replace the new battery
- When charging, please look for the charging plug and charging interface direction
- When the remote control is not in use for a long time, Please remove the batteries from the remote controller.
- When the boat is not in use for a long time, please charge the boat before storing it. This will prolong the battery life of the boat.
- Unpacking is carried out under the guidance of adults
- Keep this manual for future reference

## Federal Communication Commission Interference Statement

This device complies with Part 15 of the FCC Rules. Operation is subject to the following two conditions: (1) This device may not cause harmful interference, and (2) this device must accept any interference received, including interference that may cause undesired operation.

This equipment has been tested and found to comply with the limits for a Class B digital device, pursuant to Part 15 of the FCC Rules. These limits are designed to provide reasonable protection against harmful interference in a residential installation. This equipment generates, uses and can radiate radio frequency energy and, if not installed and used in accordance with the instructions, may cause harmful interference to radio communications. However, there is no guarantee that interference will not occur in a particular installation. If this equipment does cause harmful interference to radio or television reception, which can be determined by turning the equipment off and on, the user is encouraged to try to correct the interference by one of the following measures:

- Reorient or relocate the receiving antenna.
- Increase the separation between the equipment and receiver.
- Connect the equipment into an outlet on a circuit different from that to which the receiver is connected.
- Consult the dealer or an experienced radio/TV technician for help.

FCC Caution: Any changes or modifications not expressly approved by the party responsible for compliance could void the user's authority to operate this equipment.