



Shenzhen CTL Testing Technology Co., Ltd.
Tel: +86-755-89486194 E-mail: ctl@ctl-lab.com

FCC PART 15 SUBPART C TEST REPORT

Report Reference No..... : **CTL1908161012-WF**

Compiled by
(position+printed name+signature) Happy Guo
(File administrators)

Happy Guo

Supervised by
(position+printed name+signature) Nice Nong
(Test Engineer)

Nice Nong

Approved by
(position+printed name+signature) Ivan Xie
(Manager)

Ivan Xie

Test Firm..... : **Shenzhen CTL Testing Technology Co., Ltd.**

Address..... : Floor 1-A, Baisha Technology Park, No.3011, Shahezi Road,
Nanshan District, Shenzhen, China 518055

Applicant's name : **SHENZHEN MIFANG NETWORK TECHNOLOGY CO., LTD.**

Address..... : 305, No.8 BLDG., SUOLING INDUSTRIAL ZONE XIKENG,
GUANLAN, LONGHUA, SHENZHEN, GUANGDONG,
CHINA

Test specification:

Standard : FCC Part 15C

Master TRF : Dated 2011-01

Test item description : Wireless Charger

FCC ID : 2AR5E-SUPERP

Trade Mark..... : LETSCOM, Letsfit, ANBES

Model/Type reference : Super P, Super Z

Transmit Frequency : 115~205KHz

Antenna type..... : Loop antenna

Date of receipt of test item : Aug. 21, 2019

Date of sampling : Aug. 21, 2019

Date of Test Date : Aug. 21, 2019–Sep. 22, 2019

Data of Issue..... : Sep. 23, 2019

Result..... : **Pass**

Shenzhen CTL Testing Technology Co., Ltd. All rights reserved.

This publication may be reproduced in whole or in part for non-commercial purposes as long as the Shenzhen CTL Testing Technology Co., Ltd. is acknowledged as copyright owner and source of the material. Shenzhen CTL Testing Technology Co., Ltd. takes no responsibility for and will not assume liability for damages resulting from the reader's interpretation of the reproduced material due to its placement and context.

TEST REPORT

| | | |
|--------------------------|-------------------------|---------------|
| Test Report No. : | CTL1908161012-WF | Sep. 23, 2019 |
| | | Date of issue |

Equipment under Test : Wireless Charger

Type / Model(s) : Super P, Super Z

Applicant : **SHENZHEN MIFANG NETWORK TECHNOLOGY CO., LTD.**

Address : 305, No.8 BLDG., SUOLING INDUSTRIAL ZONE XIKENG,
GUANLAN, LONGHUA, SHENZHEN, GUANGDONG, CHINA

Manufacturer : **SHENZHEN MIFANG NETWORK TECHNOLOGY CO., LTD.**

Address : 305, No.8 BLDG., SUOLING INDUSTRIAL ZONE XIKENG,
GUANLAN, LONGHUA, SHENZHEN, GUANGDONG, CHINA

| | |
|--------------------|---------------|
| Test result | Pass * |
|--------------------|---------------|

The test results presented in this report relate only to the object tested.

This report shall not be reproduced, except in full, without the written approval of the issuing testing laboratory.

Contents

| | |
|--|------------------|
| FCC PART 15 SUBPART C TEST REPORT | 1 |
| <u>1. TEST STANDARDS</u> | <u>4</u> |
| <u>2. SUMMARY</u> | <u>5</u> |
| 2.1. General Remarks | 5 |
| 2.2. Equipment Under Test | 5 |
| 2.3. Short description of the Equipment under Test (EUT) | 5 |
| 2.4. EUT operation mode | 5 |
| 2.5. EUT configuration | 5 |
| 2.6. Related Submittal(s) / Grant (s) | 5 |
| 2.7. Modifications | 5 |
| 2.8. Summary of Test Results | 6 |
| <u>3. TEST ENVIRONMENT</u> | <u>7</u> |
| 3.1. Address of the test laboratory | 7 |
| 3.2. Test Facility | 7 |
| 3.3. Environmental conditions | 7 |
| 3.4. Statement of the measurement uncertainty | 8 |
| 3.5. Equipments Used during the Test | 8 |
| <u>4. TEST CONDITIONS AND RESULTS</u> | <u>10</u> |
| 4.1. AC Power Conducted Emission | 10 |
| 4.2. Radiated Emission | 13 |
| 4.3. 20dB Bandwidth/99% Bandwidth | 18 |
| <u>5. TEST SETUP PHOTOS OF THE EUT</u> | <u>19</u> |
| <u>6. EXTERNAL AND INTERNAL PHOTOS OF THE EUT</u> | <u>20</u> |

1. TEST STANDARDS

The tests were performed according to following standards:

[FCC Rules Part 15.207,15.209, 15.215\(c\)](#)

[ANSI C63.10-2013](#)

2. SUMMARY

2.1. General Remarks

| | | |
|--------------------------------|---|---------------|
| Date of receipt of test sample | : | Aug. 21, 2019 |
| | | |
| Testing commenced on | : | Aug. 21, 2019 |
| | | |
| Testing concluded on | : | Sep. 23, 2019 |

2.2. Equipment Under Test

Power supply system utilised

| | | | |
|----------------------|---|---|-----------------------------------|
| Power supply voltage | : | <input type="radio"/> 120V / 60 Hz | <input type="radio"/> 115V / 60Hz |
| | | <input type="radio"/> 12 V DC | <input type="radio"/> 24 V DC |
| | | <input checked="" type="radio"/> Other (specified in blank below) | |

DC 5V from USB

2.3. Short description of the Equipment under Test (EUT)

A wireless charging pad work frequency range 115-205 KHz.

For more details, refer to the user's manual of the EUT.

Serial number: Line

2.4. EUT operation mode

The charger support DC 5V/2A , DC 9V/1.67A and DC 12V/1.67A input modes, this 3 modes all have been tested, only worse case DC 5V/2A input mode was reported.

2.5. EUT configuration

The following peripheral devices and interface cables were connected during the measurement:

- ☐ - supplied by the manufacturer
- ☒ - supplied by the lab

| | | |
|---|----------------|----------------------|
| <input checked="" type="radio"/> Mobile Phone | Manufacturer : | SAMSUNG |
| | Model No. : | S7 edge |
| <input checked="" type="radio"/> AC adapter | Manufacturer : | ASUSTEK COMPUTER INC |
| | Model No. : | QCNFA335 |

2.6. Related Submittal(s) / Grant (s)

This submittal(s) (test report) is intended for **FCC ID:2AR5E-SUPERP** filing to comply with FCC Part 15, Subpart C Rules.

2.7. Modifications

No modifications were implemented to meet testing criteria.

2.8. Summary of Test Results

The EUT is wireless charging pad, The test summary of the EUT listed as below:

| | Test Standards | Test Result |
|-----------------------------------|----------------------------------|-------------|
| Electric Field Radiated Emissions | FCC Part 15 C (Section15.209) | PASS |
| 20dB Bandwidth/99% Bandwidth | FCC Part 15 C (Section15.215(c)) | PASS |
| Conducted Emissions | FCC Part 15 C (Section15.207) | PASS |

Remark: The measurement uncertainty is not included in the test result.

3. TEST ENVIRONMENT

3.1. Address of the test laboratory

Shenzhen CTL Testing Technology Co., Ltd.

Floor 1-A, Baisha Technology Park, No. 3011, Shaheji Road, Nanshan, Shenzhen 518055 China

There is one 3m semi-anechoic chamber and two line conducted labs for final test. The Test Sites meet the requirements in documents ANSI C63.4 and CISPR 32/EN 55032 requirements.

3.2. Test Facility

The test facility is recognized, certified, or accredited by the following organizations:

CNAS-Lab Code: L7497

Shenzhen CTL Testing Technology Co., Ltd. has been assessed and proved to be in compliance with CNAS-CL01 Accreditation Criteria for Testing and Calibration Laboratories (identical to ISO/IEC 17025: 2005 General Requirements) for the Competence of Testing and Calibration Laboratories.

A2LA-Lab Cert. No. 4343.01

Shenzhen CTL Testing Technology Co., Ltd, EMC Laboratory has been accredited by A2LA for technical competence in the field of electrical testing, and proved to be in compliance with ISO/IEC 17025: 2005 General Requirements for the Competence of Testing and Calibration Laboratories and any additional program requirements in the identified field of testing.

IC Registration No.: 9518B

CAB identifier: CN0041

The 3m alternate test site of Shenzhen CTL Testing Technology Co., Ltd. EMC Laboratory has been registered by Innovation, Science and Economic Development Canada to test to Canadian radio equipment requirements with Registration No.: 9518B on Jan. 22, 2019.

FCC-Registration No.: 399832

Designation No.: CN1216

Shenzhen CTL Testing Technology Co., Ltd. EMC Laboratory has been registered and fully described in a report filed with the (FCC) Federal Communications Commission. The acceptance letter from the FCC is maintained in our files. Registration 399832, December 08, 2017.

3.3. Environmental conditions

During the measurement the environmental conditions were within the listed ranges:

| | |
|-----------------------|---------------------|
| Temperature: | <u>15-35 ° C</u> |
| Humidity: | <u>30-60 %</u> |
| Atmospheric pressure: | <u>950-1050mbar</u> |

3.4. Statement of the measurement uncertainty

The data and results referenced in this document are true and accurate. The reader is cautioned that there may be errors within the calibration limits of the equipment and facilities. The measurement uncertainty was calculated for all measurements listed in this test report acc. to CISPR 16 - 4 „Specification for radio disturbance and immunity measuring apparatus and methods – Part 4: Uncertainty in EMC Measurements“ and is documented in the Shenzhen CTL Testing Technology Co., Ltd. quality system acc. to DIN EN ISO/IEC 17025. Furthermore, component and process variability of devices similar to that tested may result in additional deviation. The manufacturer has the sole responsibility of continued compliance of the device.

Hereafter the best measurement capability for CTL laboratory is reported:

| Test | Range | Measurement Uncertainty | Notes |
|-----------------------|------------|-------------------------|-------|
| Radiated Emission | 30~1000MHz | 4.10dB | (1) |
| Radiated Emission | Above 1GHz | 4.32dB | (1) |
| Conducted Disturbance | 0.15~30MHz | 3.20dB | (1) |

- (1) This uncertainty represents an expanded uncertainty expressed at approximately the 95% confidence level using a coverage factor of k=2.

3.5. Equipments Used during the Test

| Test Equipment | Manufacturer | Model No. | Serial No. | Calibration Date | Calibration Due Date |
|----------------------------|----------------------|---------------------|------------------|------------------|----------------------|
| LISN | R&S | ENV216 | 3560.6550.1 2 | 2019/05/20 | 2020/05/19 |
| LISN | R&S | ESH2-Z5 | 860014/010 | 2019/05/20 | 2020/05/19 |
| Bilog Antenna | Sunol Sciences Corp. | JB1 | A061713 | 2019/05/20 | 2020/05/19 |
| EMI Test Receiver | R&S | ESCI | 1166.5950.0 3 | 2019/05/20 | 2020/05/19 |
| Spectrum Analyzer | Agilent | E4407B | MY41440676 | 2019/05/20 | 2020/05/19 |
| Spectrum Analyzer | Agilent | N9020 | US46220290 | 2019/05/20 | 2020/05/19 |
| Controller | EM Electronics | EM 1000 | 060859 | 2019/05/20 | 2020/05/19 |
| Horn Antenna | Sunol Sciences Corp. | DRH-118 | A062013 | 2019/05/20 | 2020/05/19 |
| Active Loop Antenna | Da Ze | ZN30900A | / | 2019/05/20 | 2020/05/19 |
| Amplifier | Agilent | 8449B | 3008A02306 | 2019/05/20 | 2020/05/19 |
| Amplifier | Agilent | 8447D | 2944A10176 | 2019/05/20 | 2020/05/19 |
| Temperature/Humidity Meter | Gangxing | CTH-608 | 02 | 2019/05/20 | 2020/05/19 |
| High-Pass Filter | micro-tranics | HPM50108 | G174 | 2019/05/20 | 2020/05/19 |
| High-Pass Filter | micro-tranics | HPM50111 | G142 | 2019/05/20 | 2020/05/19 |
| Coaxial Cables | HUBER+SUHN ER | SUCOFLEX 104PEA-10M | 10m | 2019/05/20 | 2020/05/19 |
| Coaxial Cables | HUBER+SUHN | SUCOFLEX | 3m | 2019/05/20 | 2020/05/19 |

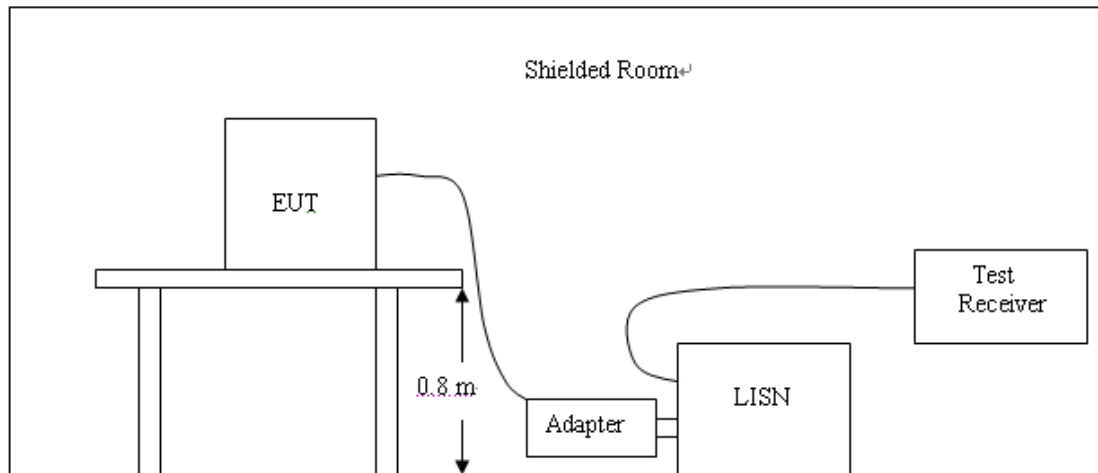
| | | | | | |
|----------------|------------------|-----------------------|-----|------------|------------|
| | ER | 104PEA-3M | | | |
| Coaxial Cables | HUBER+SUHN ER | SUCOFLEX 104PEA-3M | 3m | 2019/05/20 | 2020/05/19 |
| RF Cable | Megalon | RF-A303 | N/A | 2019/05/20 | 2020/05/19 |

The calibration interval was one year

4. TEST CONDITIONS AND RESULTS

4.1. AC Power Conducted Emission

TEST CONFIGURATION



TEST PROCEDURE

- 1 The equipment was set up as per the test configuration to simulate typical actual usage per the user's manual. The EUT is a tabletop system, a wooden table with a height of 0.8 meters is used and is placed on the ground plane as per ANSI C63.10-2013.
- 2 Support equipment, if needed, was placed as per ANSI C63.10-2013
- 3 All I/O cables were positioned to simulate typical actual usage as per ANSI C63.10-2013
- 4 The EUT received DC5V power from the adapter, the adapter received AC120V/60Hz power through a Line Impedance Stabilization Network (LISN) which supplied power source and was grounded to the ground plane.
- 5 All support equipments received AC power from a second LISN, if any.
- 6 The EUT test program was started. Emissions were measured on each current carrying line of the EUT using a spectrum Analyzer / Receiver connected to the LISN powering the EUT. The LISN has two monitoring points: Line 1 (Hot Side) and Line 2 (Neutral Side). Two scans were taken: one with Line 1 connected to Analyzer / Receiver and Line 2 connected to a 50 ohm load; the second scan had Line 1 connected to a 50 ohm load and Line 2 connected to the Analyzer / Receiver.
- 7 Analyzer / Receiver scanned from 150 KHz to 30MHz for emissions in each of the test modes.
- 8 During the above scans, the emissions were maximized by cable manipulation.
Conducted emissions were investigated over the frequency range from 0.15MHz to 30MHz using a receiver bandwidth of 9kHz.

AC Power Conducted Emission Limit

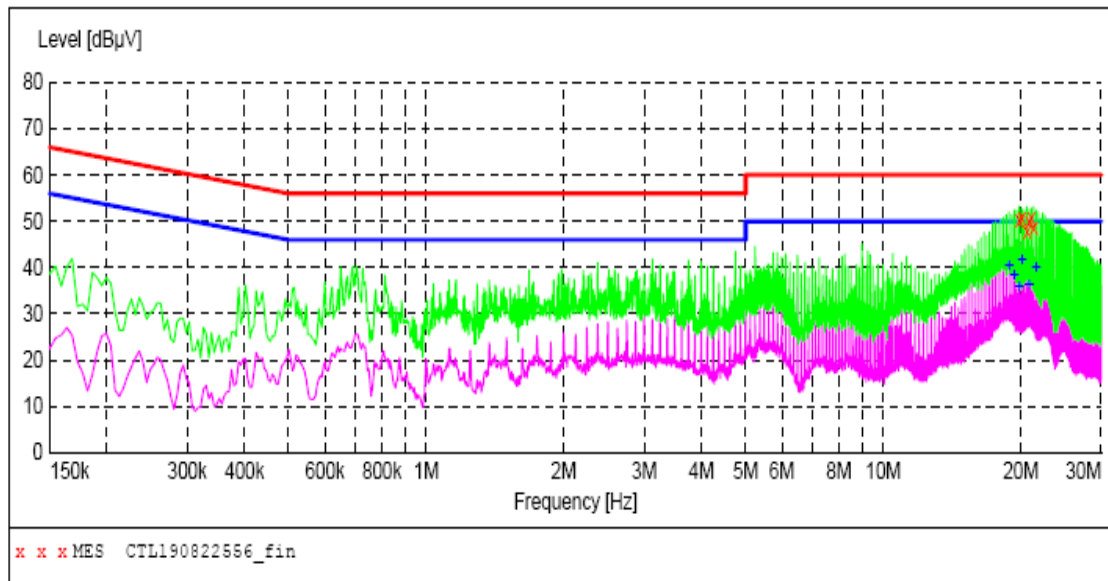
For intentional device, according to § 15.207(a) AC Power Conducted Emission Limits is as following :

| Frequency (MHz) | Maximum RF Line Voltage (dBμV) | | | |
|-----------------|--------------------------------|------|---------|--------|
| | CLASS A | | CLASS B | |
| | Q.P. | Ave. | Q.P. | Ave. |
| 0.15 - 0.50 | 79 | 66 | 66-56* | 56-46* |
| 0.50 - 5.00 | 73 | 60 | 56 | 46 |
| 5.00 - 30.0 | 73 | 60 | 60 | 50 |

* Decreasing linearly with the logarithm of the frequency

TEST RESULTS**SCAN TABLE: "Voltage (9K-30M) FIN"**

Short Description: 150K-30M Voltage

**MEASUREMENT RESULT: "CTL190822556_fin"**

2019-8-22 10:22??

| Frequency MHz | Level dBμV | Transd dB | Limit dBμV | Margin dB | Detector | Line | PE |
|------------------|---------------|--------------|---------------|--------------|----------|------|-----|
| 19.851000 | 50.40 | 11.4 | 60 | 9.6 | QP | L1 | GND |
| 20.103000 | 50.80 | 11.5 | 60 | 9.2 | QP | L1 | GND |
| 20.607000 | 47.90 | 11.5 | 60 | 12.1 | QP | L1 | GND |
| 20.854500 | 50.00 | 11.5 | 60 | 10.0 | QP | L1 | GND |
| 21.102000 | 50.70 | 11.5 | 60 | 9.3 | QP | L1 | GND |
| 21.354000 | 48.60 | 11.5 | 60 | 11.4 | QP | L1 | GND |

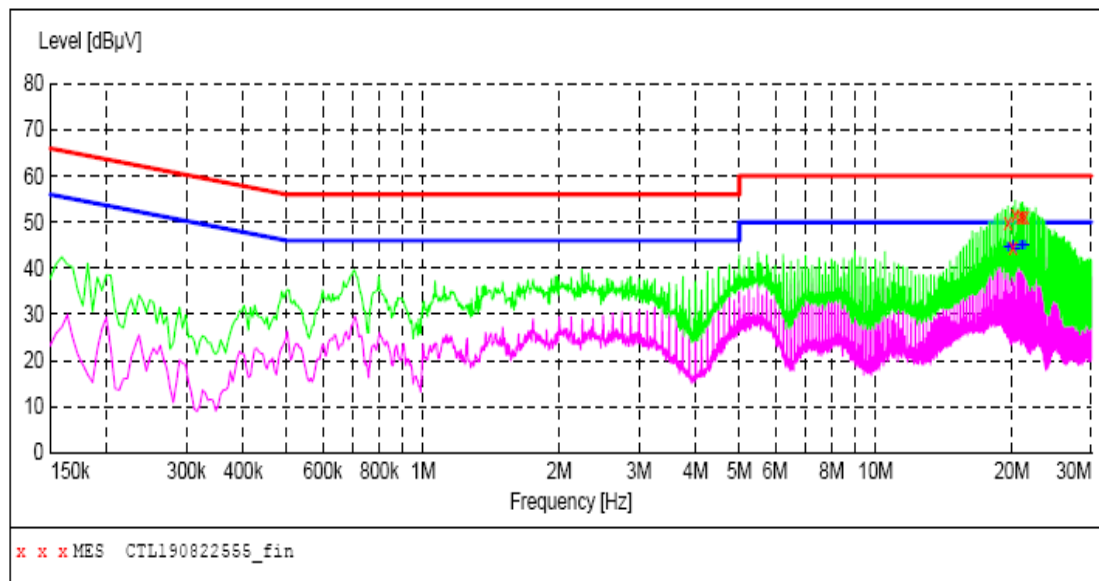
MEASUREMENT RESULT: "CTL190822556_fin2"

2019-8-22 10:22??

| Frequency MHz | Level dBμV | Transd dB | Limit dBμV | Margin dB | Detector | Line | PE |
|------------------|---------------|--------------|---------------|--------------|----------|------|-----|
| 18.856500 | 40.50 | 11.4 | 50 | 9.5 | AV | L1 | GND |
| 19.356000 | 38.40 | 11.4 | 50 | 11.6 | AV | L1 | GND |
| 19.855500 | 35.60 | 11.4 | 50 | 14.4 | AV | L1 | GND |
| 20.103000 | 41.40 | 11.5 | 50 | 8.6 | AV | L1 | GND |
| 20.854500 | 36.10 | 11.5 | 50 | 13.9 | AV | L1 | GND |
| 21.601500 | 40.00 | 11.5 | 50 | 10.0 | AV | L1 | GND |

SCAN TABLE: "Voltage (9K-30M) FIN"

Short Description: 150K-30M Voltage

**MEASUREMENT RESULT: "CTL190822555_fin"**

2019-8-22 10:19??

| Frequency MHz | Level dBμV | Transd dB | Limit dBμV | Margin dB | Detector | Line | PE |
|------------------|---------------|--------------|---------------|--------------|----------|------|-----|
| 19.617000 | 49.70 | 11.4 | 60 | 10.3 | QP | N | GND |
| 20.121000 | 44.30 | 11.5 | 60 | 15.7 | QP | N | GND |
| 20.364000 | 51.50 | 11.5 | 60 | 8.5 | QP | N | GND |
| 20.863500 | 51.30 | 11.5 | 60 | 8.7 | QP | N | GND |
| 21.111000 | 51.10 | 11.5 | 60 | 8.9 | QP | N | GND |
| 21.363000 | 51.10 | 11.5 | 60 | 8.9 | QP | N | GND |

MEASUREMENT RESULT: "CTL190822555_fin2"

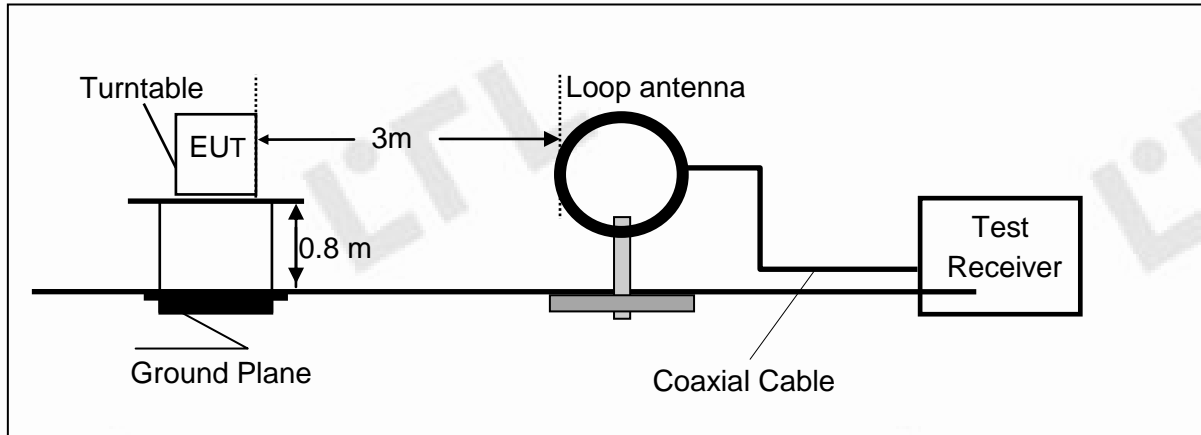
2019-8-22 10:19??

| Frequency MHz | Level dBμV | Transd dB | Limit dBμV | Margin dB | Detector | Line | PE |
|------------------|---------------|--------------|---------------|--------------|----------|------|-----|
| 19.612500 | 44.40 | 11.4 | 50 | 5.6 | AV | N | GND |
| 20.112000 | 45.00 | 11.5 | 50 | 5.0 | AV | N | GND |
| 20.364000 | 43.90 | 11.5 | 50 | 6.1 | AV | N | GND |
| 20.859000 | 44.90 | 11.5 | 50 | 5.1 | AV | N | GND |
| 21.111000 | 45.00 | 11.5 | 50 | 5.0 | AV | N | GND |
| 21.358500 | 44.80 | 11.5 | 50 | 5.2 | AV | N | GND |

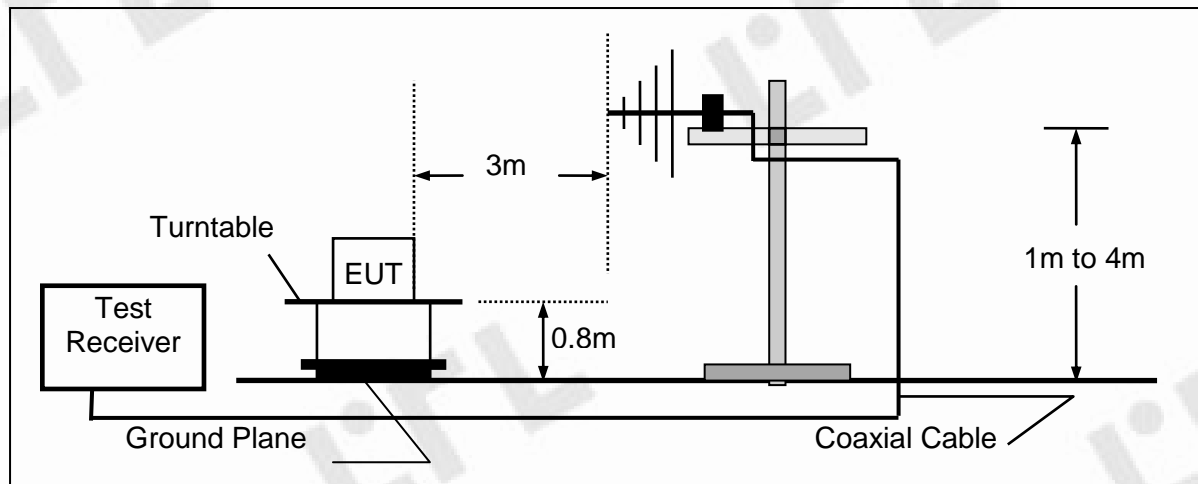
4.2. Radiated Emission

TEST CONFIGURATION

Radiated Emission Test Set-Up
Frequency range 9KHz – 30MHz



Frequency range 30MHz – 1000MHz



TEST PROCEDURE

- 1 The EUT was placed on a turn table which is 0.8m above ground plane.
- 2 Maximum procedure was performed by raising the receiving antenna from 1m to 4m and rotating the turn table from 0°C to 360°C to acquire the highest emissions from EUT
- 3 And also, each emission was to be maximized by changing the polarization of receiving antenna both horizontal and vertical.
- 4 Repeat above procedures until all frequency measurements have been completed.

Field Strength Calculation

The field strength is calculated by adding the Antenna Factor and Cable Factor and subtracting the Amplifier Gain and Duty Cycle Correction Factor(if any) from the measured reading. The basic equation with a sample calculation is as follows:

$$FS = RA + AF + CL - AG$$

| | |
|---------------------------|--|
| Where FS = Field Strength | CL = Cable Attenuation Factor (Cable Loss) |
| RA = Reading Amplitude | AG = Amplifier Gain |
| AF = Antenna Factor | |

For example

| Frequency (MHz) | FS (dBμV/m) | RA (dBμV/m) | AF (dB) | CL (dB) | AG (dB) | Transd (dB) |
|-----------------|-------------|-------------|---------|---------|---------|-------------|
| 300.00 | 40 | 58.1 | 12.2 | 1.6 | 31.90 | -18.1 |

$$\text{Transd} = \text{AF} + \text{CL} - \text{AG}$$

RADIATION LIMIT

Except as provided elsewhere in this Subpart, the emissions from an intentional radiator shall not exceed the field strength levels specified in the following table:

9k~30MHz:

| Frequency Range (MHz) | E-field Strength Limit @ 30m (mV/m) | E-field Strength Limit @ 3m (dBμV/m) |
|--|-------------------------------------|--------------------------------------|
| 0.009-0.490 | 2400/F(kHz) | 129-94 |
| 0.490-1.705 | 24000/F(kHz) | 74-63 |
| 1.705-30 | 30 | 70 |
| Note: Where the limits have been defined at one distance, and a signal level measured at another, the limits have been extrapolated using the following formula: $\text{Extrapolation(dB)} = 40\log_{10}(\text{Measurement Distance/Specification Distance})$ | | |

Note:

- (1) The tighter limit shall apply at the edge between two frequency bands.
- (2) dBuV/m = 20*log(uV/m)

30M~1GHz:

| Frequency (MHz) | Distance (Meters) | Radiated (dB μ V/m) | Radiated (μ V/m) |
|--------------------|----------------------|----------------------------|--------------------------|
| 30-88 | 3 | 40.0 | 100 |
| 88-216 | 3 | 43.5 | 150 |
| 216-960 | 3 | 46.0 | 200 |
| Above 960 | 3 | 54.0 | 500 |

Note:

- (1) The tighter limit shall apply at the edge between two frequency bands.
- (2) Distance refers to the distance in meters between the test instrument antenna and the closest point of any part of the E.U.T.

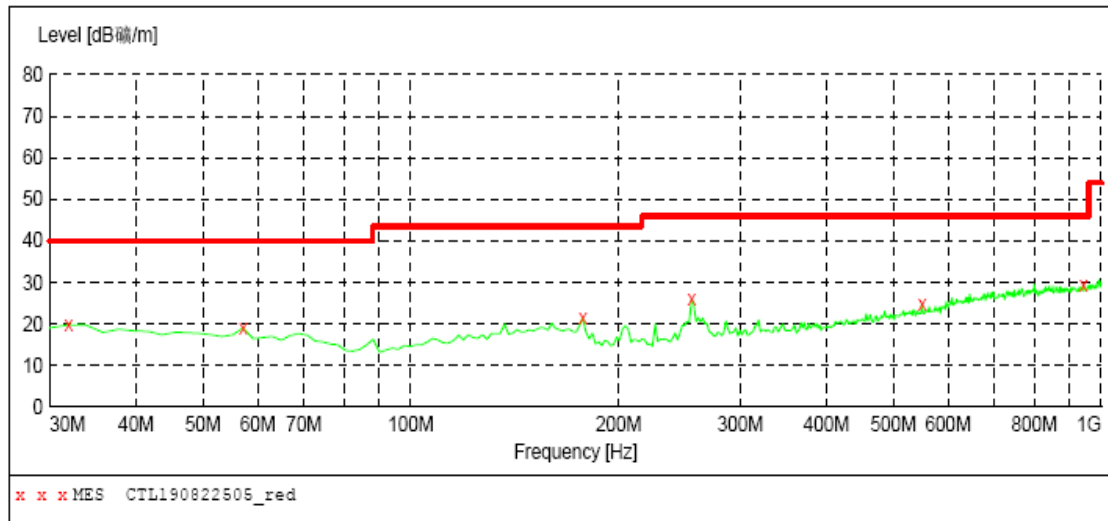
TEST RESULTS**WORST-CASE RADIATED EMISSION BELOW 30 MHz**

| Frequency (MHz) | Reading (dB μ V/m) | Polar Loop | Antenna Factor (dB/m) | Cable Loss (dB) | Emission Levels (dB μ V/m) | Limits at 3m (dB μ V/m) | Detector Mode |
|--------------------|---------------------------|---------------|-----------------------------|-----------------------|--------------------------------------|--------------------------------|------------------|
| 0.136(F) | 58.61 | Loop | 23.64 | 0.01 | 82.26 | 104.93 | PK |
| 0.136(F) | 55.18 | Loop | 23.64 | 0.01 | 78.83 | 84.93 | AV |
| 0.110 | 35.21 | Loop | 23.55 | 0.01 | 58.77 | 106.78 | PK |
| 0.110 | 31.05 | Loop | 23.55 | 0.01 | 54.61 | 86.78 | AV |
| 0.962 | 36.88 | Loop | 25.07 | 0.17 | 62.12 | 87.94 | QP |
| 1.135 | 33.31 | Loop | 27.12 | 0.25 | 60.68 | 66.50 | QP |
| 3.087 | 34.98 | Loop | 23.91 | 0.24 | 59.13 | 70.00 | QP |

- Remark:
1. Data of measurement within this frequency range shown “-” in the table above means the reading of emissions are attenuated more than 20dB below the permissible limits or the field strength is too small to be measured.
 2. The test limit distance is 3m limit.
 3. PK means Peak Value, QP means Quasi Peak Value, AV means Average Value.
 4. F means Fundamental Frequency.

Radiated Emission Test Data 30-1000MHz:***SWEEP TABLE: "test (30M-1G)"***

| Short Description: | | Field Strength | | | |
|--------------------|-----------|----------------|------------|-----------|------------|
| Start | Stop | Detector | Meas. Time | IF Bandw. | Transducer |
| Frequency | Frequency | | | | |
| 30.0 MHz | 1.0 GHz | MaxPeak | 300.0 ms | 120 kHz | VULB9168 |

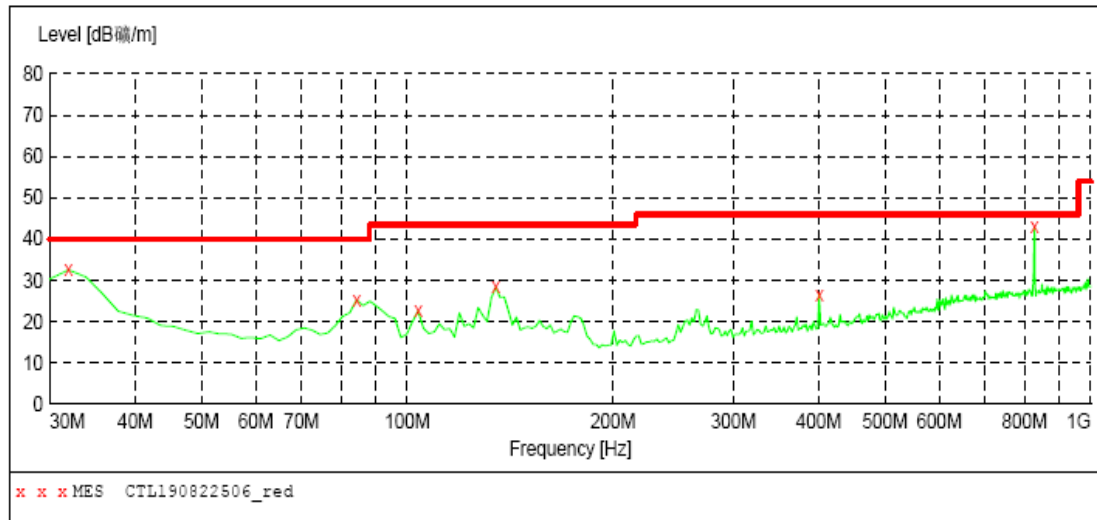
***MEASUREMENT RESULT: "CTL190822505_red"***

2019-8-22 10:05

| Frequency MHz | Level dBμV/m | Transd dB | Limit dBμV/m | Margin dB | Det. | Height cm | Azimuth deg | Polarization |
|------------------|-----------------|--------------|-----------------|--------------|------|--------------|----------------|--------------|
| 31.940000 | 19.80 | 13.9 | 40.0 | 20.2 | --- | 0.0 | 0.00 | HORIZONTAL |
| 57.160000 | 19.10 | 13.6 | 40.0 | 20.9 | --- | 0.0 | 0.00 | HORIZONTAL |
| 177.440000 | 21.50 | 13.2 | 43.5 | 22.0 | --- | 0.0 | 0.00 | HORIZONTAL |
| 255.040000 | 25.90 | 12.9 | 46.0 | 20.1 | --- | 0.0 | 0.00 | HORIZONTAL |
| 549.920000 | 24.90 | 19.1 | 46.0 | 21.1 | --- | 0.0 | 0.00 | HORIZONTAL |
| 941.800000 | 29.50 | 24.2 | 46.0 | 16.5 | --- | 0.0 | 0.00 | HORIZONTAL |

SWEEP TABLE: "test (30M-1G)"

| | | | | | |
|--------------------|-----------|----------------|----------|---------|------------|
| Short Description: | | Field Strength | | | |
| Start | Stop | Detector | Meas. | IF | Transducer |
| Frequency | Frequency | | Time | Bandw. | |
| 30.0 MHz | 1.0 GHz | MaxPeak | 300.0 ms | 120 kHz | VULB9168 |

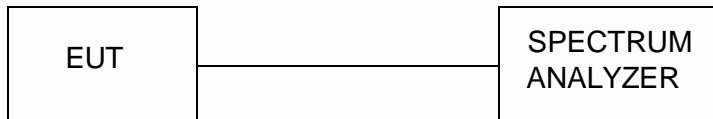
**MEASUREMENT RESULT: "CTL190822506_red"**

2019-8-22 10:07

| Frequency MHz | Level dBμV/m | Transd dB | Limit dBμV/m | Margin dB | Det. | Height cm | Azimuth deg | Polarization |
|------------------|-----------------|--------------|-----------------|--------------|------|--------------|----------------|--------------|
| 31.940000 | 32.60 | 13.9 | 40.0 | 7.4 | --- | 0.0 | 0.00 | VERTICAL |
| 84.320000 | 25.30 | 10.2 | 40.0 | 14.7 | --- | 0.0 | 0.00 | VERTICAL |
| 103.720000 | 22.60 | 11.4 | 43.5 | 20.9 | --- | 0.0 | 0.00 | VERTICAL |
| 134.760000 | 28.40 | 14.1 | 43.5 | 15.1 | --- | 0.0 | 0.00 | VERTICAL |
| 400.540000 | 26.60 | 16.2 | 46.0 | 19.4 | --- | 0.0 | 0.00 | VERTICAL |
| 827.340000 | 42.90 | 22.9 | 46.0 | 3.1 | --- | 0.0 | 0.00 | VERTICAL |

4.3. 20dB Bandwidth/99% Bandwidth

TEST CONFIGURATION



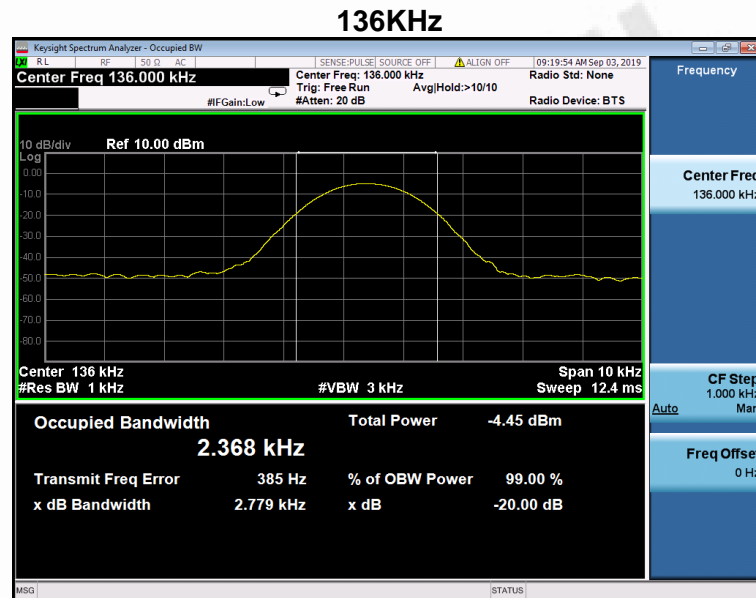
TEST PROCEDURE

The bandwidth of the fundamental frequency was measured by spectrum analyzer with 10Hz RBW and 30Hz VBW. The 20dB bandwidth is defined as the total spectrum the power of which is higher than peak power minus 20dB.

LIMIT

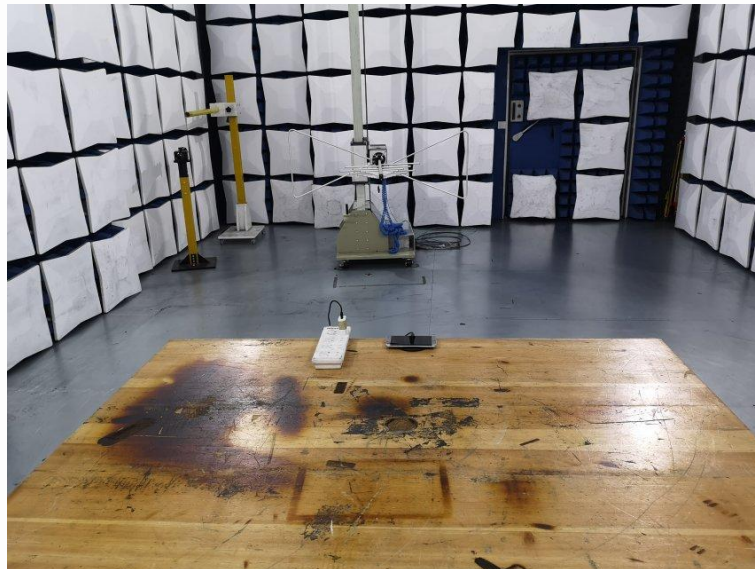
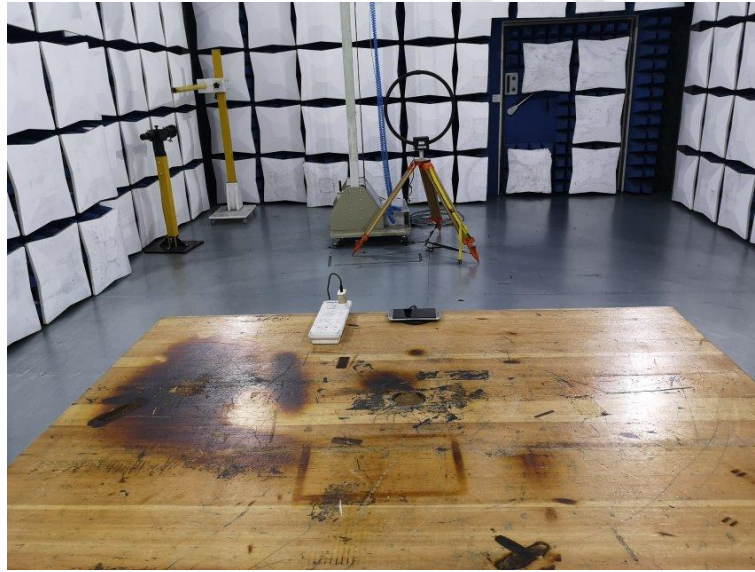
The 20dB bandwidth shall be less than 80% of the permitted frequency band.

TEST RESULTS



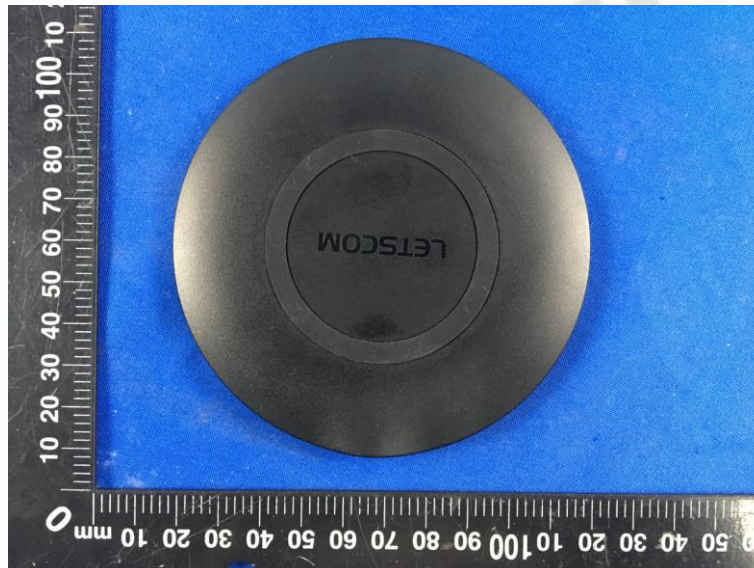
Result: 2.779 kHz for 20dB bandwidth

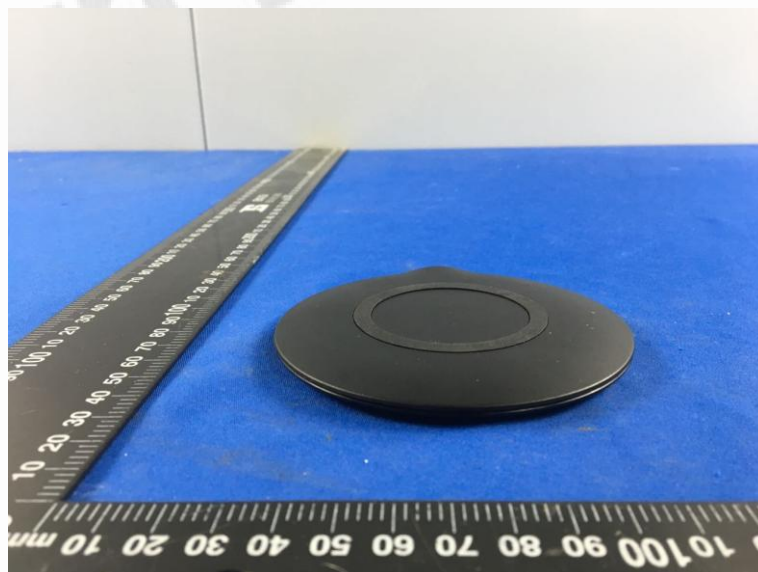
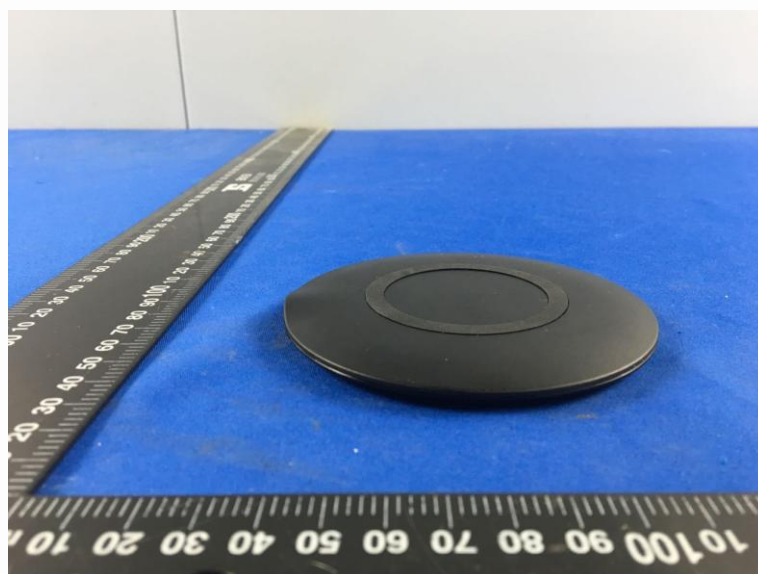
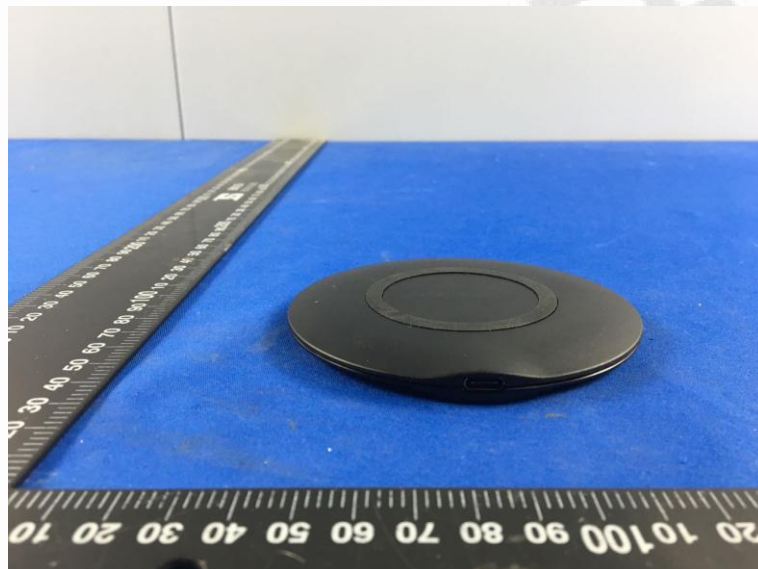
5. Test Setup Photos of the EUT

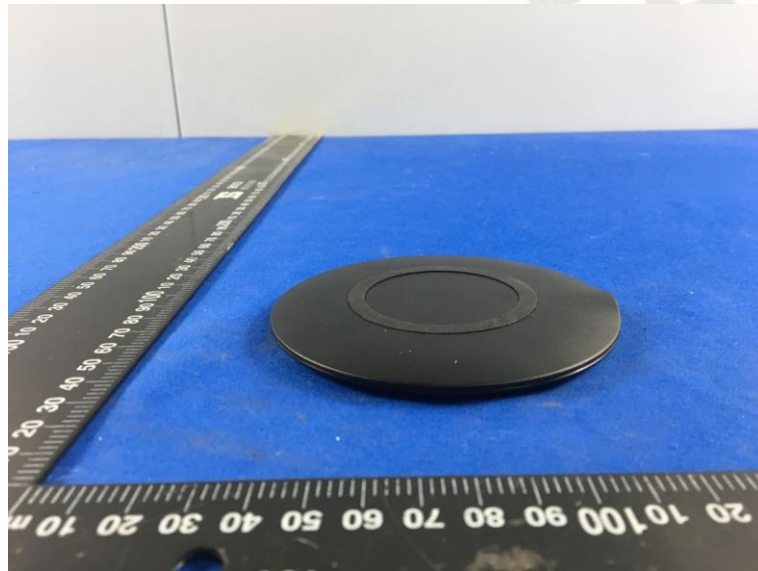


6. External and Internal Photos of the EUT

External Photos of EUT

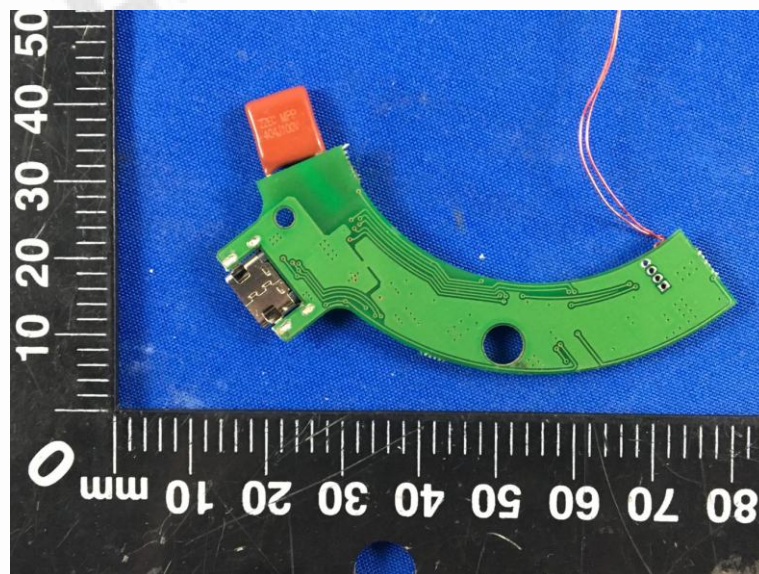
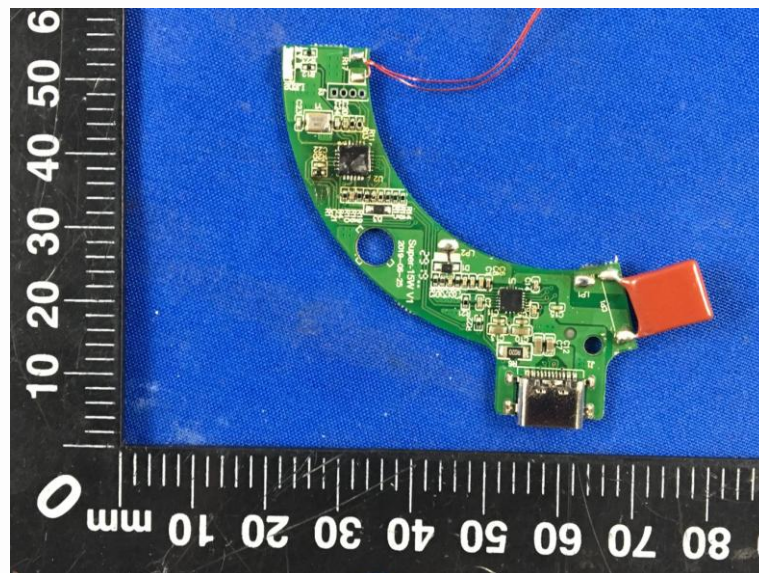
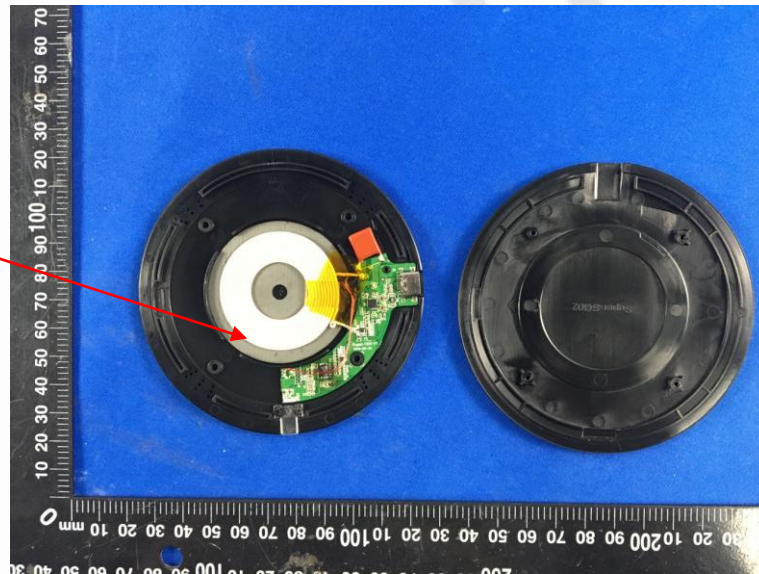






Internal Photos of EUT

Loop
Antenna



.....End of Report.....