

GSM850 4 Slots Main Ant 1

Frequency: 836.6 MHz; Duty Cycle: 1:1.99986; Room Ambient Temperature: 24.0°C; Liquid Temperature: 23.0°C
Medium parameters used (interpolated): $f = 836.6$ MHz; $\sigma = 0.933$ S/m; $\epsilon_r = 41.373$; $\rho = 1000$ kg/m³

DASY5 Configuration:

- Area Scan Setting: Find Secondary Maximum Within: 2.0 dB and with a peak SAR value greater than 0.0012W/kg
- Electronics: DAE4 Sn1540; Calibrated: 1/11/2022
- Probe: EX3DV4 - SN7585; ConvF(10.02, 10.02, 10.02) @ 836.6 MHz; Calibrated: 4/27/2021
- Sensor-Surface: 1.4mm (Mechanical Surface Detection)
- Phantom: Twin-SAM V8.0 (30deg probe tilt); Type: QD 000 P41 Ax; Serial: xxxx

RHS/Touch_GPRS 4 slots_ch 190/Area Scan (8x13x1): Measurement grid: dx=15mm, dy=15mm

[Info: Interpolated medium parameters used for SAR evaluation.](#)

Maximum value of SAR (measured) = 0.118 W/kg

RHS/Touch_GPRS 4 slots_ch 190/Zoom Scan (5x5x7)/Cube 0: Measurement grid: dx=8mm, dy=8mm, dz=5mm

Reference Value = 10.94 V/m; Power Drift = -0.03 dB

Peak SAR (extrapolated) = 0.122 W/kg

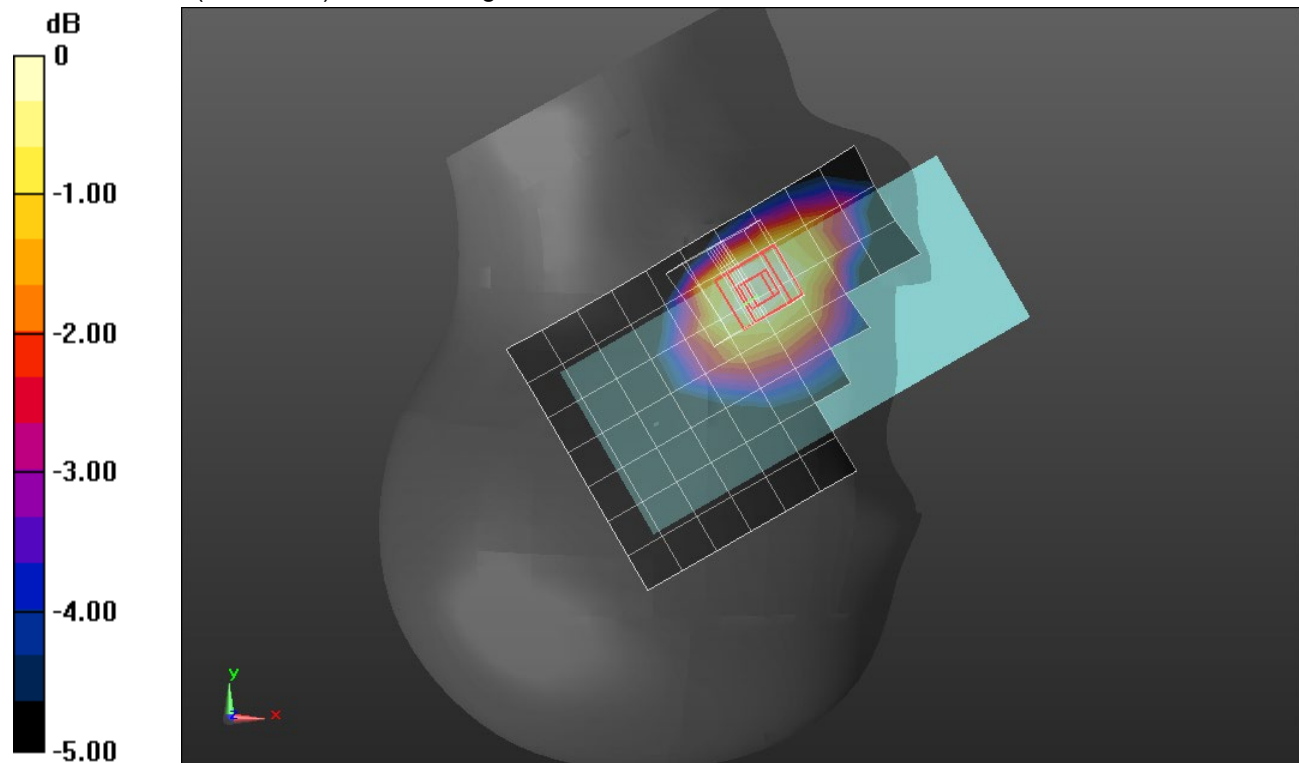
SAR(1 g) = 0.096 W/kg; SAR(10 g) = 0.074 W/kg

Smallest distance from peaks to all points 3 dB below = 19.8 mm

Ratio of SAR at M2 to SAR at M1 = 81.5%

[Info: Interpolated medium parameters used for SAR evaluation.](#)

Maximum value of SAR (measured) = 0.112 W/kg



0 dB = 0.112 W/kg = -9.51 dBW/kg

GSM850 4 Slots Main Ant 1

Frequency: 836.6 MHz; Duty Cycle: 1:4.00037; Room Ambient Temperature: 24.0°C; Liquid Temperature: 23.0°C
Medium parameters used (interpolated): $f = 836.6$ MHz; $\sigma = 0.933$ S/m; $\epsilon_r = 41.373$; $\rho = 1000$ kg/m³

DASY5 Configuration:

- Area Scan Setting: Find Secondary Maximum Within: 2.0 dB and with a peak SAR value greater than 0.0012W/kg
- Electronics: DAE4 Sn1540; Calibrated: 1/11/2022
- Probe: EX3DV4 - SN7585; ConvF(10.02, 10.02, 10.02) @ 836.6 MHz; Calibrated: 4/27/2021
- Sensor-Surface: 1.4mm (Mechanical Surface Detection)
- Phantom: Twin-SAM V8.0 (30deg probe tilt); Type: QD 000 P41 Ax; Serial: xxxx

DTM/DTM CS + 1 PS slot_ch 190_10mm/Area Scan (8x14x1): Measurement grid: dx=15mm, dy=15mm

[Info: Interpolated medium parameters used for SAR evaluation.](#)

Maximum value of SAR (measured) = 0.938 W/kg

DTM/DTM CS + 1 PS slot_ch 190_10mm/Zoom Scan (5x5x7)/Cube 0: Measurement grid: dx=8mm, dy=8mm, dz=5mm

Reference Value = 29.73 V/m; Power Drift = -0.07 dB

Peak SAR (extrapolated) = 1.10 W/kg

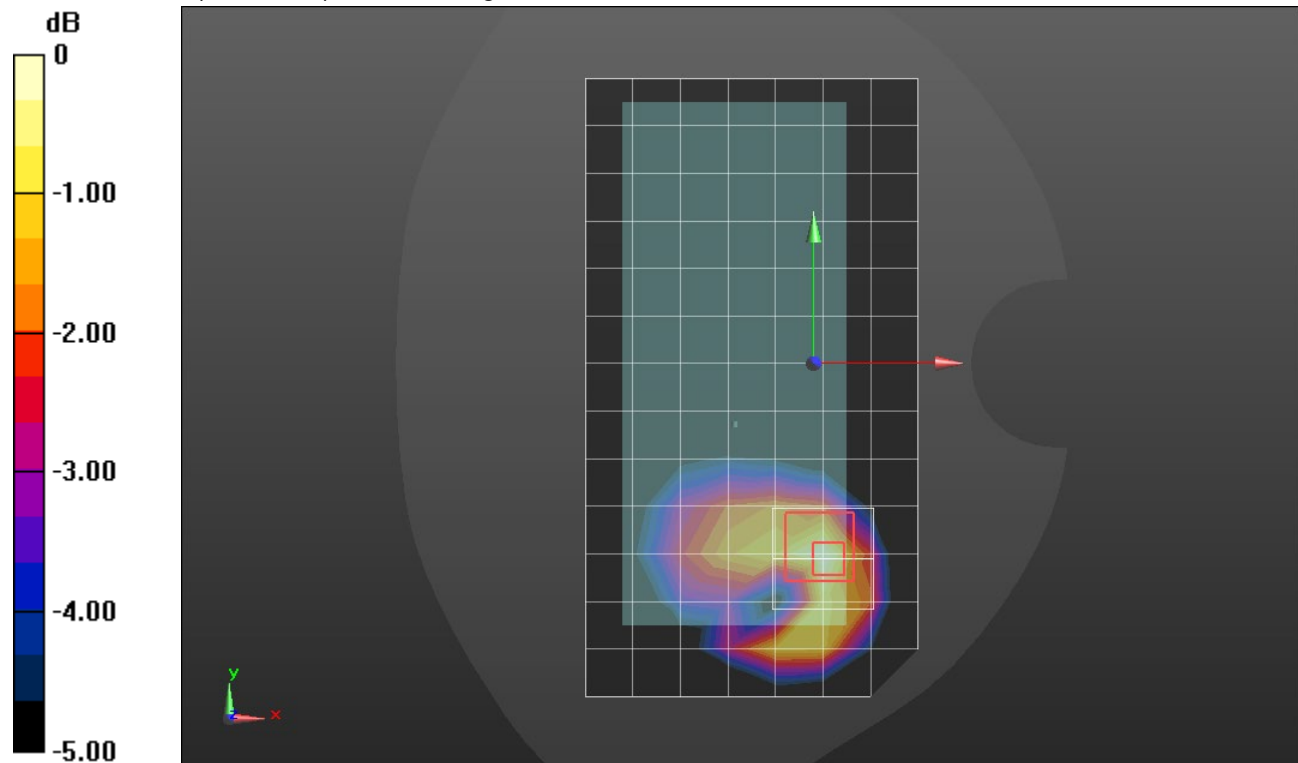
SAR(1 g) = 0.641 W/kg; SAR(10 g) = 0.383 W/kg

Smallest distance from peaks to all points 3 dB below = 15.1 mm

Ratio of SAR at M2 to SAR at M1 = 58.2%

[Info: Interpolated medium parameters used for SAR evaluation.](#)

Maximum value of SAR (measured) = 0.920 W/kg



GSM1900 4 Slots Main Ant 2

Frequency: 1880 MHz; Duty Cycle: 1:1.99986; Room Ambient Temperature: 24.0°C; Liquid Temperature: 23.0°C
Medium parameters used: $f = 1880$ MHz; $\sigma = 1.438$ S/m; $\epsilon_r = 39.708$; $\rho = 1000$ kg/m³

DASY5 Configuration:

- Area Scan Setting: Find Secondary Maximum Within: 2.0 dB and with a peak SAR value greater than 0.0012W/kg
- Electronics: DAE4 Sn1674; Calibrated: 6/4/2021
- Probe: EX3DV4 - SN3749; ConvF(7.73, 7.73, 7.73) @ 1880 MHz; Calibrated: 1/18/2022
- Sensor-Surface: 1.4mm (Mechanical Surface Detection)
- Phantom: SAM with CRP v5.0; Type: QD000P40CD; Serial: TP:xxxx

LHS/Touch_GPRS 4 slots_ch 661/Area Scan (8x13x1): Measurement grid: dx=15mm, dy=15mm
Maximum value of SAR (measured) = 0.0295 W/kg

LHS/Touch_GPRS 4 slots_ch 661/Zoom Scan (5x5x7)/Cube 0: Measurement grid: dx=8mm, dy=8mm, dz=5mm

Reference Value = 4.284 V/m; Power Drift = 0.11 dB

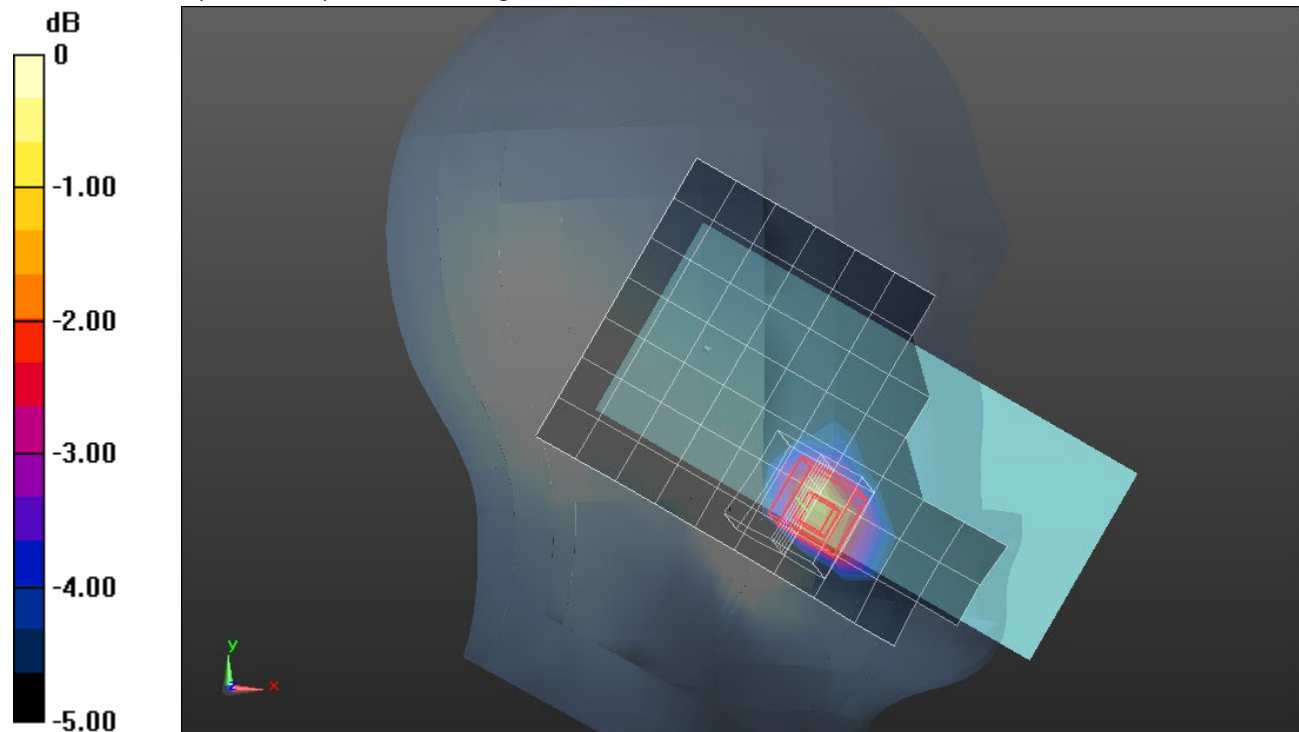
Peak SAR (extrapolated) = 0.0430 W/kg

SAR(1 g) = 0.025 W/kg; SAR(10 g) = 0.014 W/kg

Smallest distance from peaks to all points 3 dB below: Larger than measurement grid (> 16 mm)

Ratio of SAR at M2 to SAR at M1 = 60.2%

Maximum value of SAR (measured) = 0.0363 W/kg



0 dB = 0.0363 W/kg = -14.40 dBW/kg

GSM1900 4 Slots Main Ant 2

Frequency: 1880 MHz; Duty Cycle: 1:4.00037; Room Ambient Temperature: 24.0°C; Liquid Temperature: 23.0°C
Medium parameters used: $f = 1880$ MHz; $\sigma = 1.438$ S/m; $\epsilon_r = 39.708$; $\rho = 1000$ kg/m³

DASY5 Configuration:

- Area Scan Setting: Find Secondary Maximum Within: 2.0 dB and with a peak SAR value greater than 0.0012W/kg
- Electronics: DAE4 Sn1674; Calibrated: 6/4/2021
- Probe: EX3DV4 - SN3749; ConvF(7.73, 7.73, 7.73) @ 1880 MHz; Calibrated: 1/18/2022
- Sensor-Surface: 1.4mm (Mechanical Surface Detection)
- Phantom: SAM with CRP v5.0; Type: QD000P40CD; Serial: TP:xxxx

Edge 3/DTM 2 slots_ch 661/Area Scan (5x8x1): Measurement grid: dx=15mm, dy=15mm

Maximum value of SAR (measured) = 0.195 W/kg

Edge 3/DTM 2 slots_ch 661/Zoom Scan (5x5x7)/Cube 0: Measurement grid: dx=8mm, dy=8mm, dz=5mm

Reference Value = 12.02 V/m; Power Drift = 0.00 dB

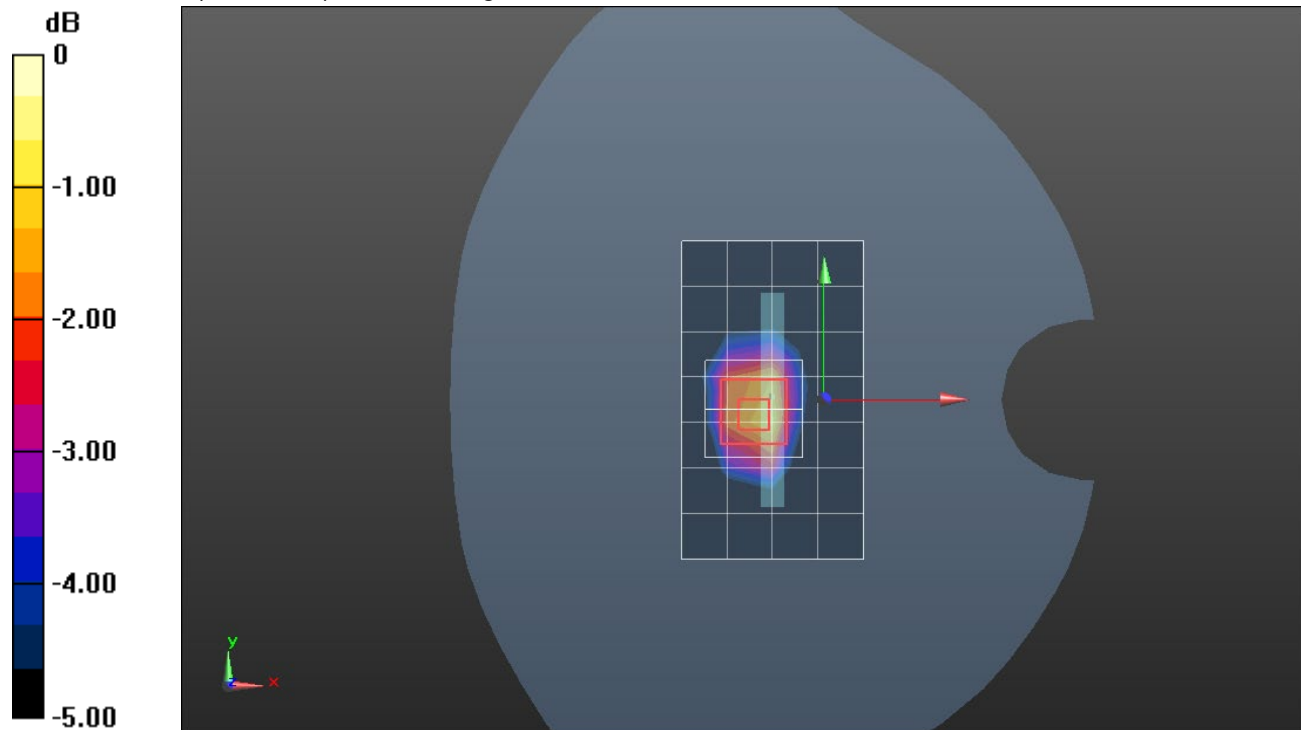
Peak SAR (extrapolated) = 0.284 W/kg

SAR(1 g) = 0.159 W/kg; SAR(10 g) = 0.088 W/kg

Smallest distance from peaks to all points 3 dB below = 12.9 mm

Ratio of SAR at M2 to SAR at M1 = 56.6%

Maximum value of SAR (measured) = 0.237 W/kg



0 dB = 0.237 W/kg = -6.25 dBW/kg

W-CDMA Band II Main Ant 2

Frequency: 1880 MHz; Duty Cycle: 1:1; Room Ambient Temperature: 24.0°C; Liquid Temperature: 23.0°C

Medium parameters used: $f = 1880$ MHz; $\sigma = 1.438$ S/m; $\epsilon_r = 39.708$; $\rho = 1000$ kg/m³

DASY5 Configuration:

- Area Scan Setting: Find Secondary Maximum Within: 2.0 dB and with a peak SAR value greater than 0.0012W/kg
- Electronics: DAE4 Sn1674; Calibrated: 6/4/2021
- Probe: EX3DV4 - SN3749; ConvF(7.73, 7.73, 7.73) @ 1880 MHz; Calibrated: 1/18/2022
- Sensor-Surface: 1.4mm (Mechanical Surface Detection)
- Phantom: SAM with CRP v5.0; Type: QD000P40CD; Serial: TP:xxxx

RHS/Touch_RMC Rel. 99_ch 9400/Area Scan (8x13x1): Measurement grid: dx=15mm, dy=15mm

Maximum value of SAR (measured) = 0.0506 W/kg

RHS/Touch_RMC Rel. 99_ch 9400/Zoom Scan (5x5x7)/Cube 0: Measurement grid: dx=8mm, dy=8mm, dz=5mm

Reference Value = 5.620 V/m; Power Drift = 0.18 dB

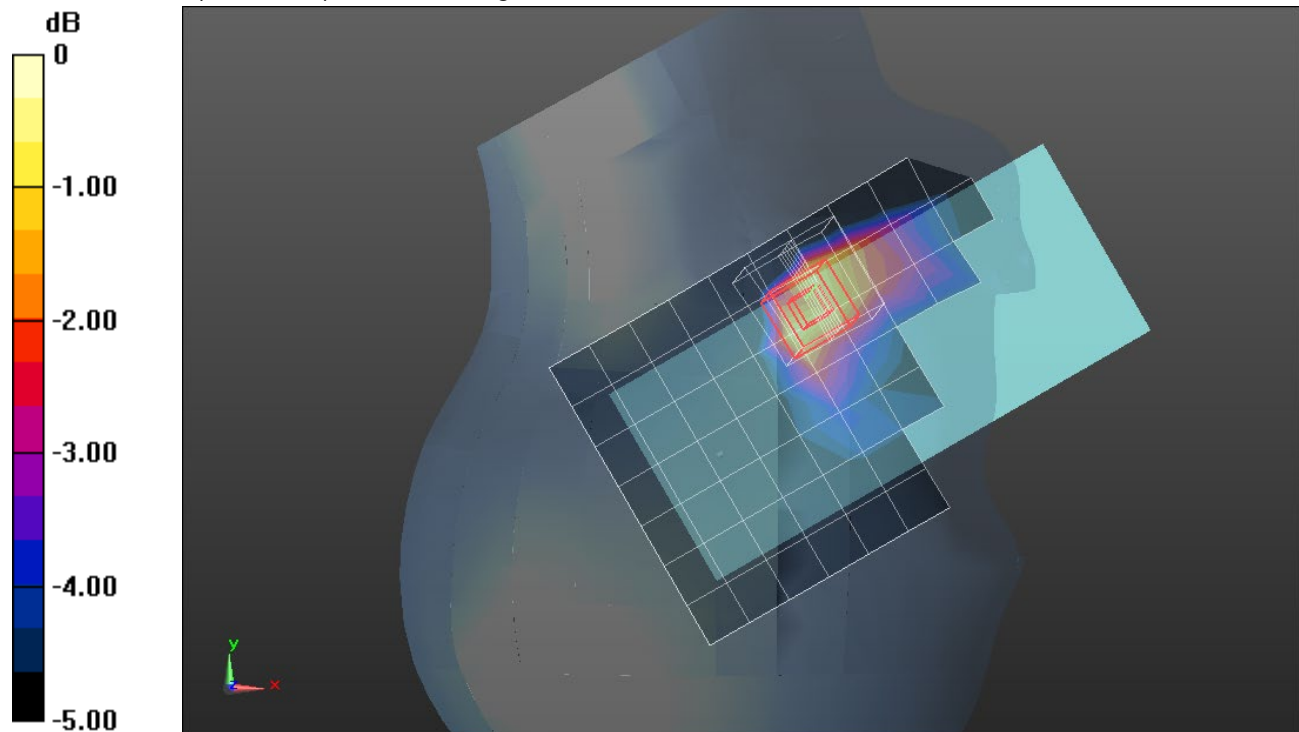
Peak SAR (extrapolated) = 0.0660 W/kg

SAR(1 g) = 0.042 W/kg; SAR(10 g) = 0.026 W/kg

Smallest distance from peaks to all points 3 dB below: Larger than measurement grid (> 16 mm)

Ratio of SAR at M2 to SAR at M1 = 62.2%

Maximum value of SAR (measured) = 0.0573 W/kg



0 dB = 0.0573 W/kg = -12.42 dBW/kg

W-CDMA Band II Main Ant 2

Frequency: 1880 MHz; Duty Cycle: 1:1; Room Ambient Temperature: 24.0°C; Liquid Temperature: 23.0°C

Medium parameters used: $f = 1880$ MHz; $\sigma = 1.438$ S/m; $\epsilon_r = 39.708$; $\rho = 1000$ kg/m³

DASY5 Configuration:

- Area Scan Setting: Find Secondary Maximum Within: 2.0 dB and with a peak SAR value greater than 0.0012W/kg
- Electronics: DAE4 Sn1674; Calibrated: 6/4/2021
- Probe: EX3DV4 - SN3749; ConvF(7.73, 7.73, 7.73) @ 1880 MHz; Calibrated: 1/18/2022
- Sensor-Surface: 1.4mm (Mechanical Surface Detection)
- Phantom: SAM with CRP v5.0; Type: QD000P40CD; Serial: TP:xxxx

Rear/RMC Rel. 99_ch 9400/Area Scan (8x14x1): Measurement grid: dx=15mm, dy=15mm

Maximum value of SAR (measured) = 0.325 W/kg

Rear/RMC Rel. 99_ch 9400/Zoom Scan (5x5x7)/Cube 0: Measurement grid: dx=8mm, dy=8mm, dz=5mm

Reference Value = 14.21 V/m; Power Drift = 0.09 dB

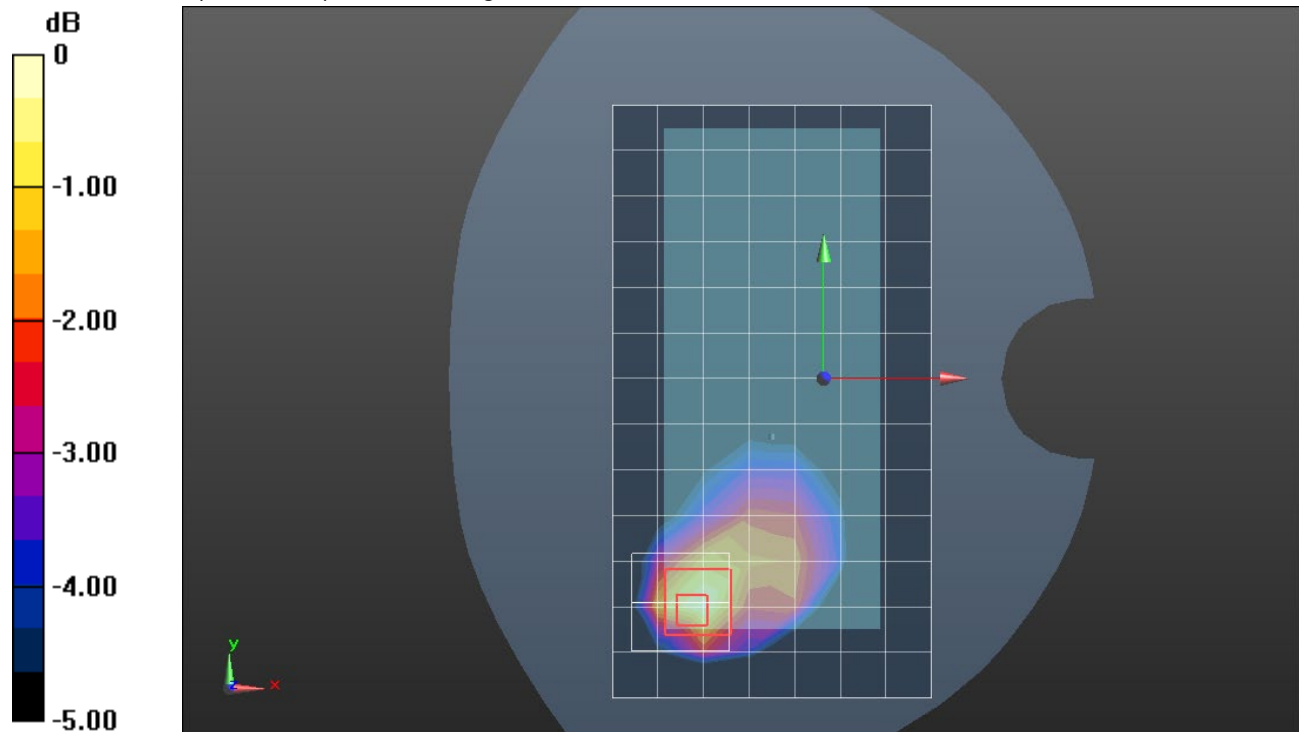
Peak SAR (extrapolated) = 0.437 W/kg

SAR(1 g) = 0.238 W/kg; SAR(10 g) = 0.133 W/kg

Smallest distance from peaks to all points 3 dB below = 11.3 mm

Ratio of SAR at M2 to SAR at M1 = 54.4%

Maximum value of SAR (measured) = 0.340 W/kg



0 dB = 0.340 W/kg = -4.69 dBW/kg

W-CDMA Band IV Main Ant 2

Frequency: 1732.6 MHz; Duty Cycle: 1:1; Room Ambient Temperature: 24.0°C; Liquid Temperature: 23.0°C

Medium parameters used (interpolated): $f = 1732.6$ MHz; $\sigma = 1.299$ S/m; $\epsilon_r = 38.625$; $\rho = 1000$ kg/m³

DASY5 Configuration:

- Area Scan Setting: Find Secondary Maximum Within: 2.0 dB and with a peak SAR value greater than 0.0012W/kg
- Electronics: DAE4 Sn1674; Calibrated: 6/4/2021
- Probe: EX3DV4 - SN3749; ConvF(7.98, 7.98, 7.98) @ 1732.6 MHz; Calibrated: 1/18/2022
- Sensor-Surface: 1.4mm (Mechanical Surface Detection)
- Phantom: SAM with CRP v5.0; Type: QD000P40CD; Serial: TP:xxxx

RHS/Touch_RMC Rel. 99_ch 1413/Area Scan (8x13x1): Measurement grid: dx=15mm, dy=15mm

[Info: Interpolated medium parameters used for SAR evaluation.](#)

Maximum value of SAR (measured) = 0.0555 W/kg

RHS/Touch_RMC Rel. 99_ch 1413/Zoom Scan (5x5x7)/Cube 0: Measurement grid: dx=8mm, dy=8mm, dz=5mm

Reference Value = 6.206 V/m; Power Drift = 0.13 dB

Peak SAR (extrapolated) = 0.0740 W/kg

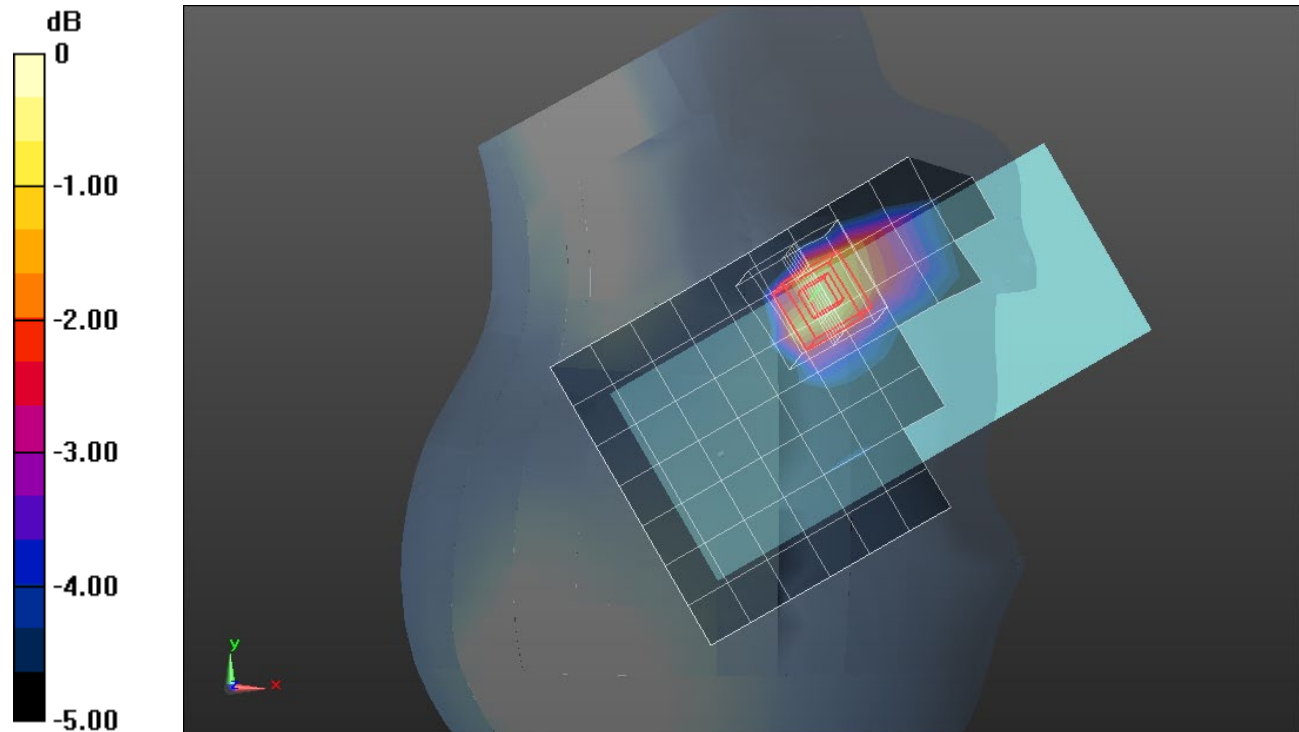
SAR(1 g) = 0.047 W/kg; SAR(10 g) = 0.029 W/kg

Smallest distance from peaks to all points 3 dB below: Larger than measurement grid (> 16 mm)

Ratio of SAR at M2 to SAR at M1 = 63.5%

[Info: Interpolated medium parameters used for SAR evaluation.](#)

Maximum value of SAR (measured) = 0.0642 W/kg



0 dB = 0.0642 W/kg = -11.92 dBW/kg

W-CDMA Band IV Main Ant 2

Frequency: 1732.6 MHz; Duty Cycle: 1:1; Room Ambient Temperature: 24.0°C; Liquid Temperature: 23.0°C
 Medium parameters used (interpolated): $f = 1732.6$ MHz; $\sigma = 1.299$ S/m; $\epsilon_r = 38.625$; $\rho = 1000$ kg/m³

DASY5 Configuration:

- Area Scan Setting: Find Secondary Maximum Within: 2.0 dB and with a peak SAR value greater than 0.0012W/kg
- Electronics: DAE4 Sn1674; Calibrated: 6/4/2021
- Probe: EX3DV4 - SN3749; ConvF(7.98, 7.98, 7.98) @ 1732.6 MHz; Calibrated: 1/18/2022
- Sensor-Surface: 1.4mm (Mechanical Surface Detection)
- Phantom: SAM with CRP v5.0; Type: QD000P40CD; Serial: TP:xxxx

Front/RMC Rel. 99_ch 1413/Area Scan (8x14x1): Measurement grid: dx=15mm, dy=15mm

[Info: Interpolated medium parameters used for SAR evaluation.](#)

Maximum value of SAR (measured) = 0.264 W/kg

Front/RMC Rel. 99_ch 1413/Zoom Scan (5x5x7)/Cube 0: Measurement grid: dx=8mm, dy=8mm, dz=5mm

Reference Value = 13.54 V/m; Power Drift = 0.11 dB

Peak SAR (extrapolated) = 0.342 W/kg

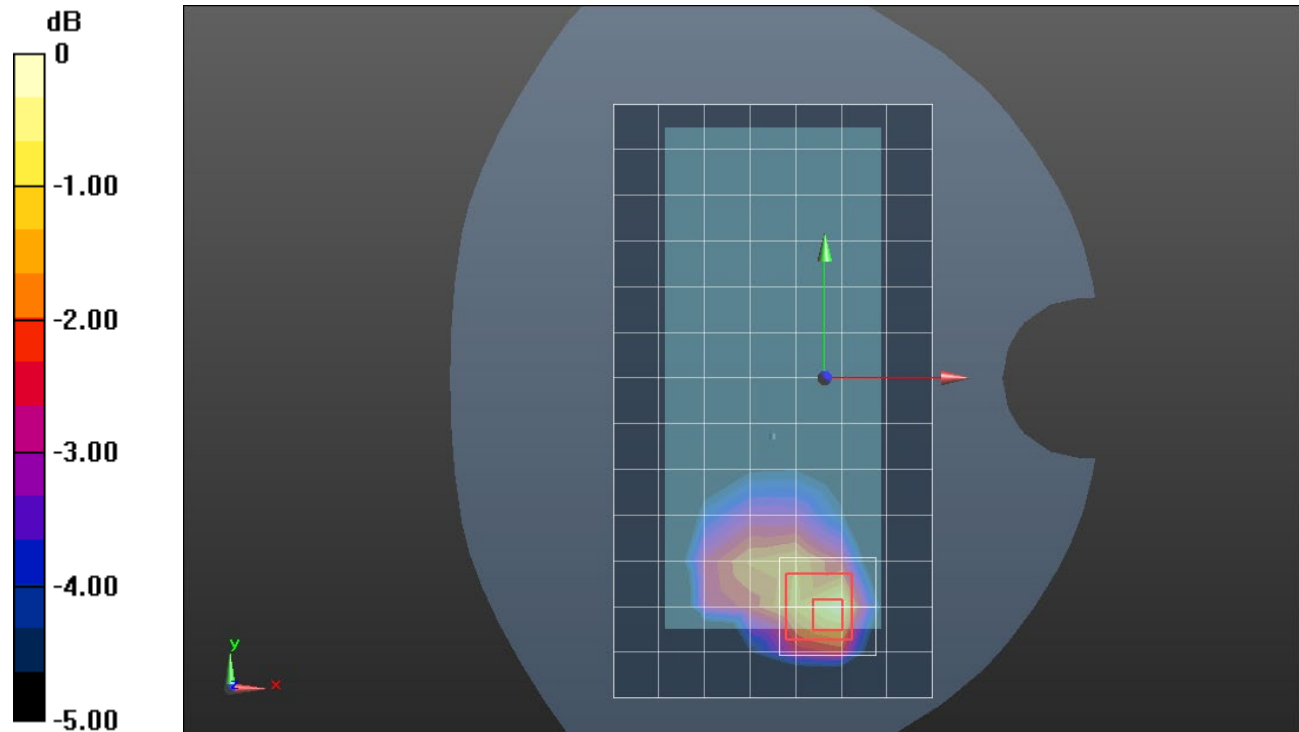
SAR(1 g) = 0.199 W/kg; SAR(10 g) = 0.113 W/kg

Smallest distance from peaks to all points 3 dB below = 12.9 mm

Ratio of SAR at M2 to SAR at M1 = 59.7%

[Info: Interpolated medium parameters used for SAR evaluation.](#)

Maximum value of SAR (measured) = 0.284 W/kg



0 dB = 0.284 W/kg = -5.47 dBW/kg

W-CDMA Band V Main Ant 1

Frequency: 836.6 MHz; Duty Cycle: 1:1; Room Ambient Temperature: 24.0°C; Liquid Temperature: 23.0°C

Medium parameters used (interpolated): $f = 836.6$ MHz; $\sigma = 0.907$ S/m; $\epsilon_r = 41.002$; $\rho = 1000$ kg/m³

DASY5 Configuration:

- Area Scan Setting: Find Secondary Maximum Within: 2.0 dB and with a peak SAR value greater than 0.0012W/kg
- Electronics: DAE4 Sn1540; Calibrated: 1/11/2022
- Probe: EX3DV4 - SN7585; ConvF(10.02, 10.02, 10.02) @ 836.6 MHz; Calibrated: 4/27/2021
- Sensor-Surface: 1.4mm (Mechanical Surface Detection)
- Phantom: Twin-SAM V8.0 (30deg probe tilt); Type: QD 000 P41 Ax; Serial: xxxx

RHS/Touch_RMC Rel. 99_ch 4183/Area Scan (7x13x1): Measurement grid: dx=15mm, dy=15mm

[Info: Interpolated medium parameters used for SAR evaluation.](#)

Maximum value of SAR (measured) = 0.0836 W/kg

RHS/Touch_RMC Rel. 99_ch 4183/Zoom Scan (5x5x7)/Cube 0: Measurement grid: dx=8mm, dy=8mm, dz=5mm

Reference Value = 9.512 V/m; Power Drift = 0.01 dB

Peak SAR (extrapolated) = 0.0940 W/kg

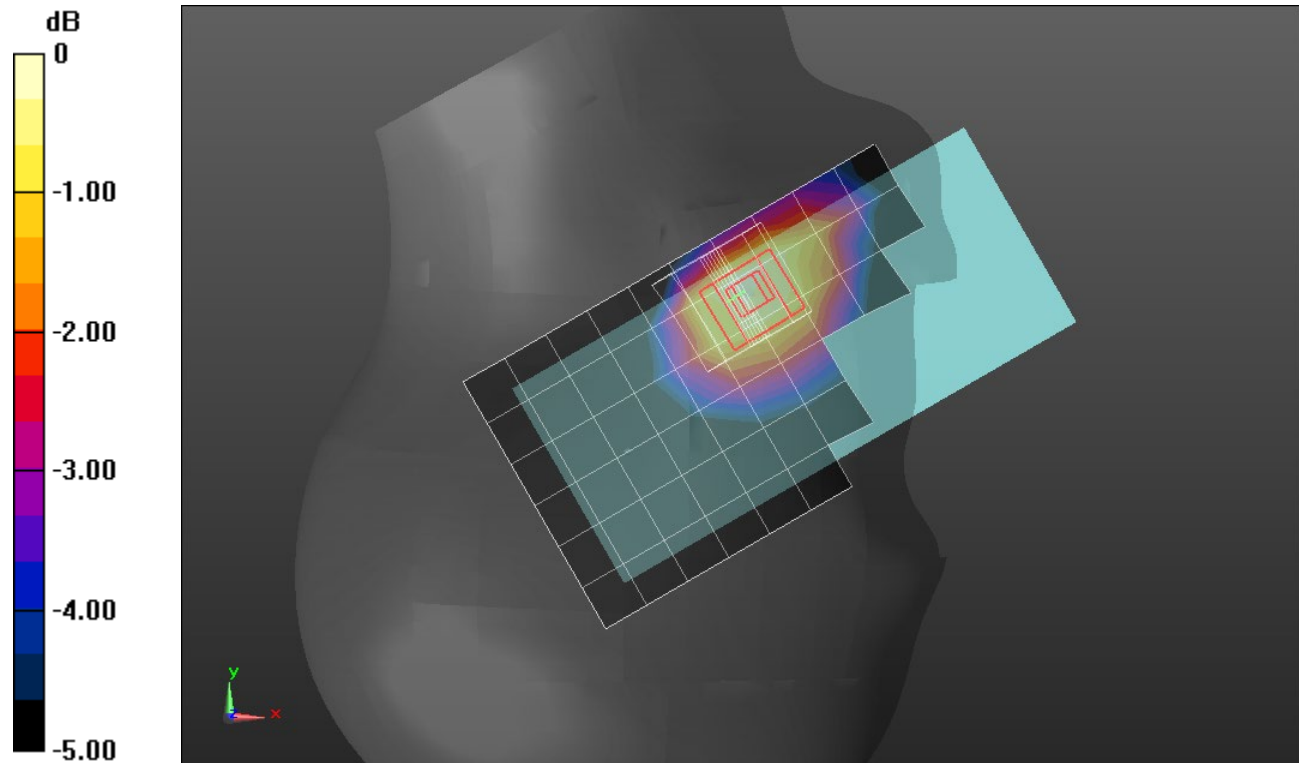
SAR(1 g) = 0.072 W/kg; SAR(10 g) = 0.055 W/kg

Smallest distance from peaks to all points 3 dB below: Larger than measurement grid (> 16 mm)

Ratio of SAR at M2 to SAR at M1 = 78.9%

[Info: Interpolated medium parameters used for SAR evaluation.](#)

Maximum value of SAR (measured) = 0.0858 W/kg



0 dB = 0.0858 W/kg = -10.67 dBW/kg

W-CDMA Band V Main Ant 1

Frequency: 836.6 MHz; Duty Cycle: 1:1; Room Ambient Temperature: 24.0°C; Liquid Temperature: 23.0°C

Medium parameters used (interpolated): $f = 836.6$ MHz; $\sigma = 0.907$ S/m; $\epsilon_r = 41.002$; $\rho = 1000$ kg/m³

DASY5 Configuration:

- Area Scan Setting: Find Secondary Maximum Within: 2.0 dB and with a peak SAR value greater than 0.0012W/kg
- Electronics: DAE4 Sn1540; Calibrated: 1/11/2022
- Probe: EX3DV4 - SN7585; ConvF(10.02, 10.02, 10.02) @ 836.6 MHz; Calibrated: 4/27/2021
- Sensor-Surface: 1.4mm (Mechanical Surface Detection)
- Phantom: Twin-SAM V8.0 (30deg probe tilt); Type: QD 000 P41 Ax; Serial: xxxx

Rear/RMC Rel. 99_ch 4183_10mm/Area Scan (8x14x1): Measurement grid: dx=15mm, dy=15mm

[Info: Interpolated medium parameters used for SAR evaluation.](#)

Maximum value of SAR (measured) = 0.492 W/kg

Rear/RMC Rel. 99_ch 4183_10mm/Zoom Scan (5x5x7)/Cube 0: Measurement grid: dx=8mm, dy=8mm, dz=5mm

Reference Value = 22.68 V/m; Power Drift = 0.00 dB

Peak SAR (extrapolated) = 0.637 W/kg

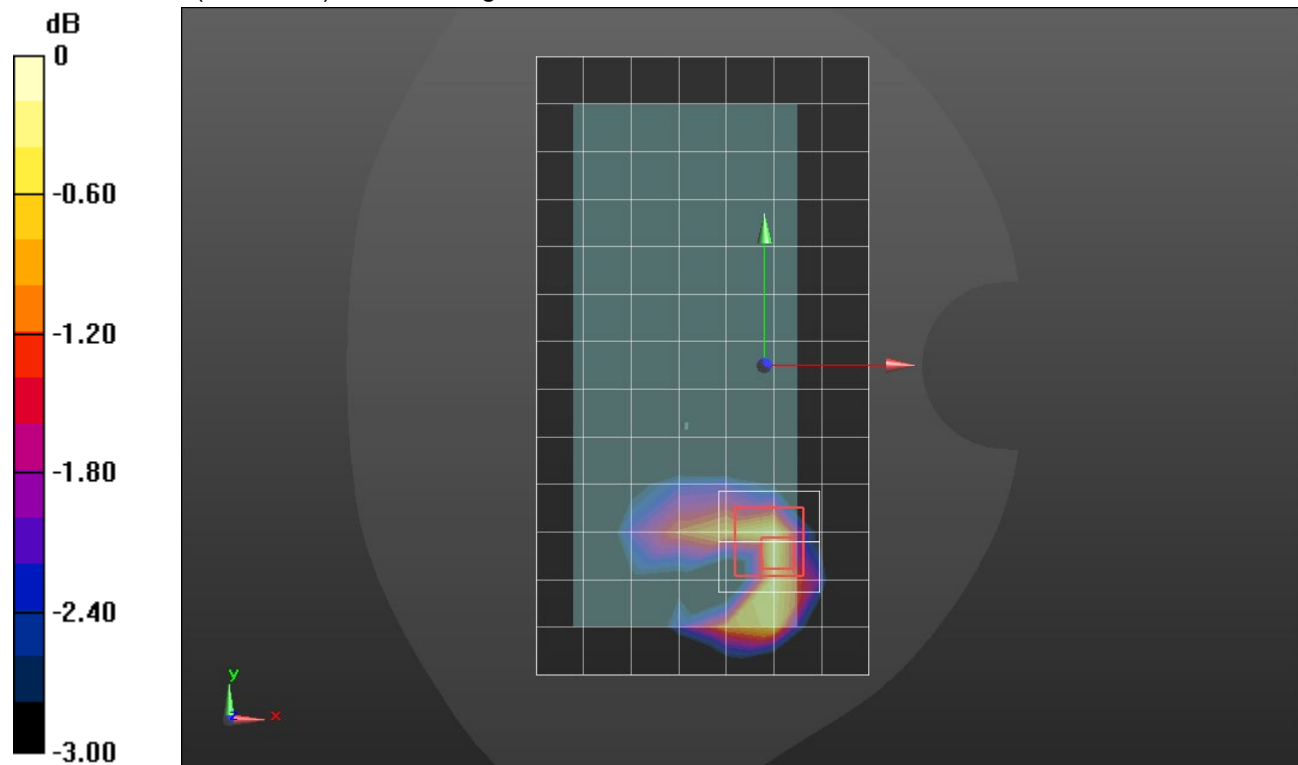
SAR(1 g) = 0.366 W/kg; SAR(10 g) = 0.220 W/kg

Smallest distance from peaks to all points 3 dB below = 13.8 mm

Ratio of SAR at M2 to SAR at M1 = 59.9%

[Info: Interpolated medium parameters used for SAR evaluation.](#)

Maximum value of SAR (measured) = 0.518 W/kg



0 dB = 0.518 W/kg = -2.86 dBW/kg

LTE Band 4 Main Ant 2

Frequency: 1732.5 MHz; Duty Cycle: 1:1; Room Ambient Temperature: 24.0°C; Liquid Temperature: 23.0°C
Medium parameters used (interpolated): $f = 1732.5$ MHz; $\sigma = 1.299$ S/m; $\epsilon_r = 38.625$; $\rho = 1000$ kg/m³

DASY5 Configuration:

- Area Scan Setting: Find Secondary Maximum Within: 2.0 dB and with a peak SAR value greater than 0.0012W/kg
- Electronics: DAE4 Sn1674; Calibrated: 6/4/2021
- Probe: EX3DV4 - SN3749; ConvF(7.98, 7.98, 7.98) @ 1732.5 MHz; Calibrated: 1/18/2022
- Sensor-Surface: 1.4mm (Mechanical Surface Detection)
- Phantom: SAM with CRP v5.0; Type: QD000P40CD; Serial: TP:xxxx

RHS/Touch_QPSK RB 50,24 Ch 20175/Area Scan (8x14x1): Measurement grid: dx=15mm, dy=15mm

[Info: Interpolated medium parameters used for SAR evaluation.](#)

Maximum value of SAR (measured) = 0.0494 W/kg

RHS/Touch_QPSK RB 50,24 Ch 20175/Zoom Scan (5x5x7)/Cube 0: Measurement grid: dx=8mm, dy=8mm, dz=5mm

Reference Value = 6.388 V/m; Power Drift = -0.02 dB

Peak SAR (extrapolated) = 0.0630 W/kg

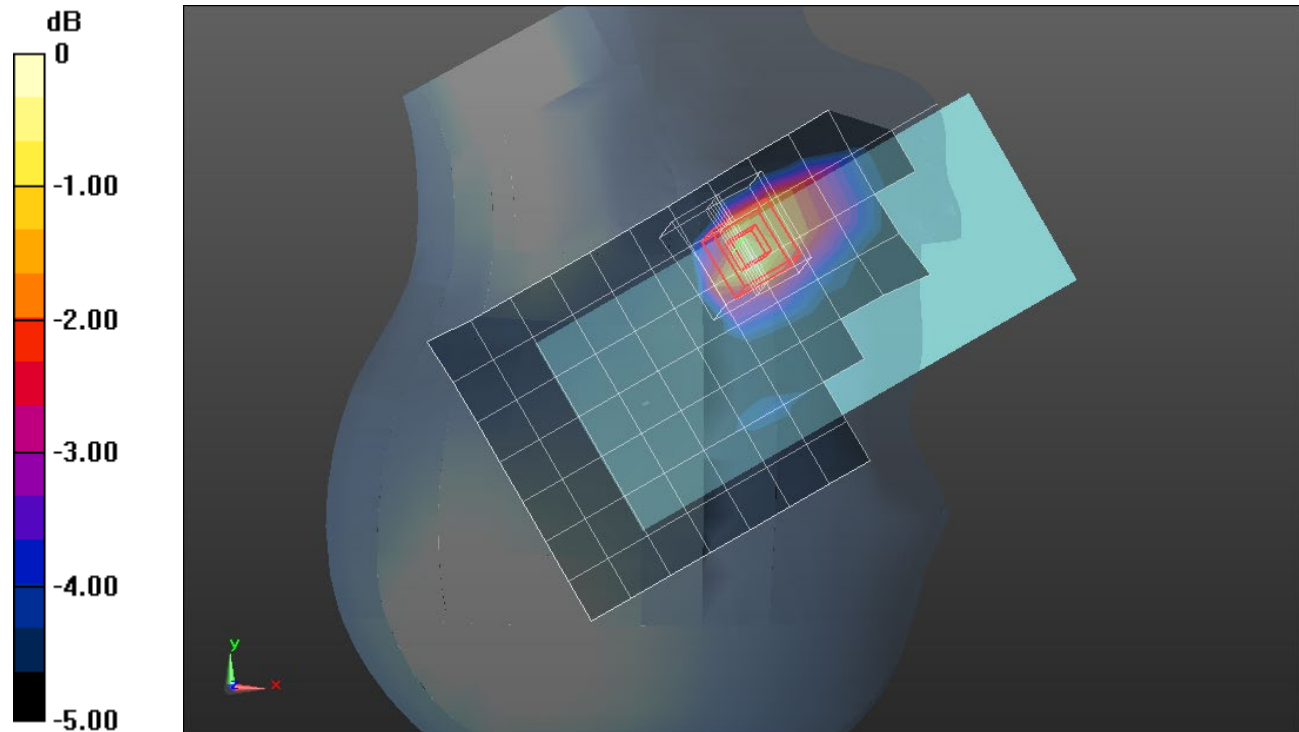
SAR(1 g) = 0.040 W/kg; SAR(10 g) = 0.025 W/kg

Smallest distance from peaks to all points 3 dB below: Larger than measurement grid (> 16 mm)

Ratio of SAR at M2 to SAR at M1 = 63.8%

[Info: Interpolated medium parameters used for SAR evaluation.](#)

Maximum value of SAR (measured) = 0.0543 W/kg



0 dB = 0.0543 W/kg = -12.65 dBW/kg

LTE Band 4 Main Ant 2

Frequency: 1732.5 MHz; Duty Cycle: 1:1; Room Ambient Temperature: 24.0°C; Liquid Temperature: 23.0°C
 Medium parameters used (interpolated): $f = 1732.5$ MHz; $\sigma = 1.298$ S/m; $\epsilon_r = 39.384$; $\rho = 1000$ kg/m³

DASY5 Configuration:

- Area Scan Setting: Find Secondary Maximum Within: 2.0 dB and with a peak SAR value greater than 0.0012W/kg
- Electronics: DAE4 Sn1674; Calibrated: 6/4/2021
- Probe: EX3DV4 - SN3749; ConvF(7.98, 7.98, 7.98) @ 1732.5 MHz; Calibrated: 1/18/2022
- Sensor-Surface: 1.4mm (Mechanical Surface Detection)
- Phantom: SAM with CRP v5.0; Type: QD000P40CD; Serial: TP:xxxx

Rear/QPSK RB 50,24 Ch 20175/Area Scan (8x14x1): Measurement grid: dx=15mm, dy=15mm

[Info: Interpolated medium parameters used for SAR evaluation.](#)

Maximum value of SAR (measured) = 0.273 W/kg

Rear/QPSK RB 50,24 Ch 20175/Zoom Scan (5x5x7)/Cube 0: Measurement grid: dx=8mm, dy=8mm, dz=5mm

Reference Value = 13.62 V/m; Power Drift = -0.03 dB

Peak SAR (extrapolated) = 0.327 W/kg

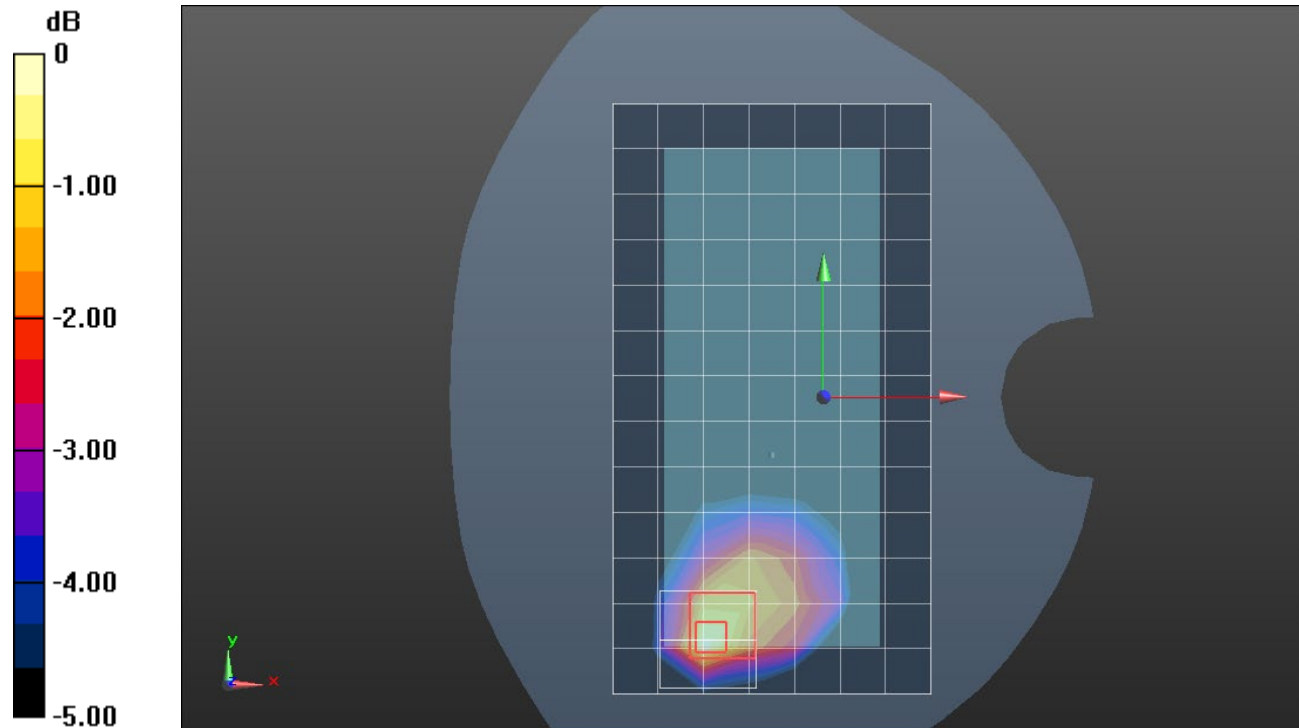
SAR(1 g) = 0.188 W/kg; SAR(10 g) = 0.110 W/kg

Smallest distance from peaks to all points 3 dB below = 15.2 mm

Ratio of SAR at M2 to SAR at M1 = 58%

[Info: Interpolated medium parameters used for SAR evaluation.](#)

Maximum value of SAR (measured) = 0.277 W/kg



0 dB = 0.277 W/kg = -5.58 dBW/kg

LTE Band 5 Main Ant 1

Frequency: 836.5 MHz; Duty Cycle: 1:1; Room Ambient Temperature: 24.0°C; Liquid Temperature: 23.0°C

Medium parameters used (interpolated): $f = 836.5$ MHz; $\sigma = 0.907$ S/m; $\epsilon_r = 41$; $\rho = 1000$ kg/m³

DASY5 Configuration:

- Area Scan Setting: Find Secondary Maximum Within: 2.0 dB and with a peak SAR value greater than 0.0012W/kg
- Electronics: DAE4 Sn1540; Calibrated: 1/11/2022
- Probe: EX3DV4 - SN7585; ConvF(10.02, 10.02, 10.02) @ 836.5 MHz; Calibrated: 4/27/2021
- Sensor-Surface: 1.4mm (Mechanical Surface Detection)
- Phantom: Twin-SAM V8.0 (30deg probe tilt); Type: QD 000 P41 Ax; Serial: xxxx

RHS/Touch_QPSK RB 25,0 Ch 20525/Area Scan (8x14x1): Measurement grid: dx=15mm, dy=15mm

[Info: Interpolated medium parameters used for SAR evaluation.](#)

Maximum value of SAR (measured) = 0.0616 W/kg

RHS/Touch_QPSK RB 25,0 Ch 20525/Zoom Scan (5x5x7)/Cube 0: Measurement grid: dx=8mm, dy=8mm, dz=5mm

Reference Value = 8.746 V/m; Power Drift = 0.05 dB

Peak SAR (extrapolated) = 0.0690 W/kg

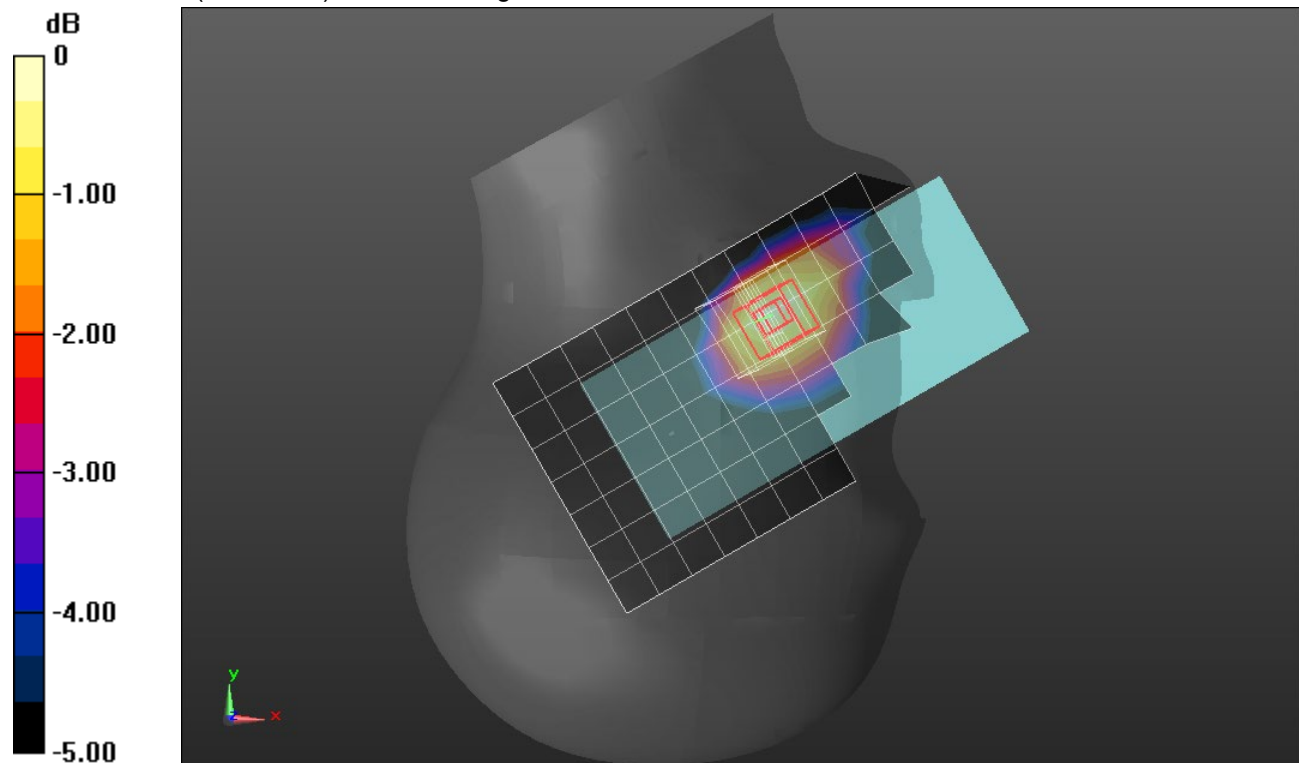
SAR(1 g) = 0.054 W/kg; SAR(10 g) = 0.042 W/kg

Smallest distance from peaks to all points 3 dB below: Larger than measurement grid (> 16 mm)

Ratio of SAR at M2 to SAR at M1 = 80.7%

[Info: Interpolated medium parameters used for SAR evaluation.](#)

Maximum value of SAR (measured) = 0.0633 W/kg



0 dB = 0.0633 W/kg = -11.99 dBW/kg

LTE Band 5 Main Ant 1

Frequency: 836.5 MHz; Duty Cycle: 1:1; Room Ambient Temperature: 24.0°C; Liquid Temperature: 23.0°C

Medium parameters used (interpolated): $f = 836.5$ MHz; $\sigma = 0.907$ S/m; $\epsilon_r = 41$; $\rho = 1000$ kg/m³

DASY5 Configuration:

- Area Scan Setting: Find Secondary Maximum Within: 2.0 dB and with a peak SAR value greater than 0.0012W/kg
- Electronics: DAE4 Sn1540; Calibrated: 1/11/2022
- Probe: EX3DV4 - SN7585; ConvF(10.02, 10.02, 10.02) @ 836.5 MHz; Calibrated: 4/27/2021
- Sensor-Surface: 1.4mm (Mechanical Surface Detection)
- Phantom: Twin-SAM V8.0 (30deg probe tilt); Type: QD 000 P41 Ax; Serial: xxxx

Rear/QPSK RB 25,0 Ch 20525/Area Scan (8x14x1): Measurement grid: dx=15mm, dy=15mm

[Info: Interpolated medium parameters used for SAR evaluation.](#)

Maximum value of SAR (measured) = 0.410 W/kg

Rear/QPSK RB 25,0 Ch 20525/Zoom Scan (5x5x7)/Cube 0: Measurement grid: dx=8mm, dy=8mm, dz=5mm

Reference Value = 19.99 V/m; Power Drift = 0.10 dB

Peak SAR (extrapolated) = 0.518 W/kg

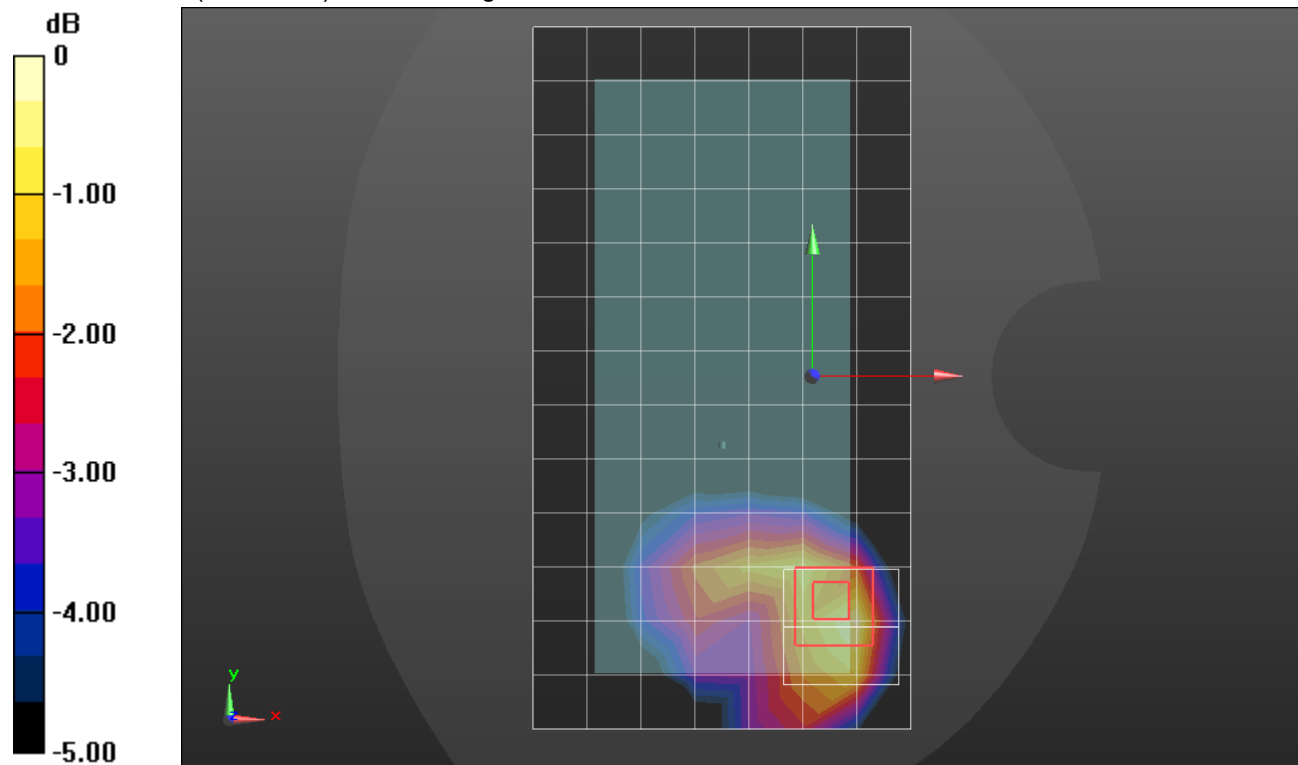
SAR(1 g) = 0.300 W/kg; SAR(10 g) = 0.178 W/kg

Smallest distance from peaks to all points 3 dB below = 14.8 mm

Ratio of SAR at M2 to SAR at M1 = 55.7%

[Info: Interpolated medium parameters used for SAR evaluation.](#)

Maximum value of SAR (measured) = 0.433 W/kg



0 dB = 0.433 W/kg = -3.64 dBW/kg

LTE Band 13 Main Ant 1

Frequency: 782 MHz; Duty Cycle: 1:1; Room Ambient Temperature: 24.0°C; Liquid Temperature: 23.0°C

Medium parameters used (interpolated): $f = 782$ MHz; $\sigma = 0.889$ S/m; $\epsilon_r = 43.466$; $\rho = 1000$ kg/m³

DASY5 Configuration:

- Area Scan Setting: Find Secondary Maximum Within: 2.0 dB and with a peak SAR value greater than 0.0012W/kg
- Electronics: DAE4 Sn1540; Calibrated: 1/11/2022
- Probe: EX3DV4 - SN7585; ConvF(10.52, 10.52, 10.52) @ 782 MHz; Calibrated: 4/27/2021
- Sensor-Surface: 1.4mm (Mechanical Surface Detection (Locations From Previous Scan Used)), Sensor-Surface: 1.4mm (Mechanical Surface Detection)
- Phantom: Twin-SAM V8.0 (30deg probe tilt); Type: QD 000 P41 Ax; Serial: xxxx

RHS/Touch_QPSK RB 25,0 Ch 23230/Area Scan (7x13x1): Measurement grid: dx=15mm, dy=15mm

[Info: Interpolated medium parameters used for SAR evaluation.](#)

Maximum value of SAR (measured) = 0.0543 W/kg

RHS/Touch_QPSK RB 25,0 Ch 23230/Zoom Scan (5x5x7)/Cube 0: Measurement grid: dx=8mm, dy=8mm, dz=5mm

Reference Value = 7.448 V/m; Power Drift = 0.15 dB

Peak SAR (extrapolated) = 0.0590 W/kg

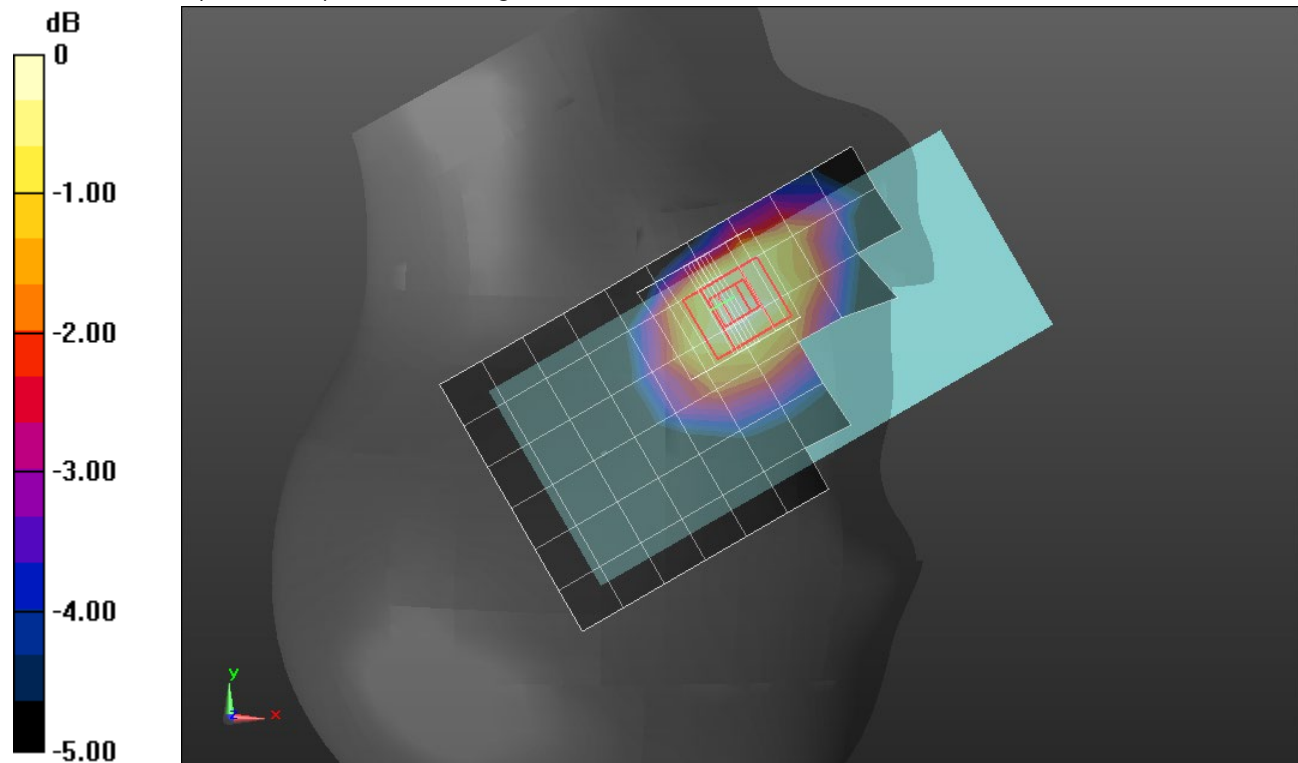
SAR(1 g) = 0.046 W/kg; SAR(10 g) = 0.035 W/kg

Smallest distance from peaks to all points 3 dB below: Larger than measurement grid (> 16 mm)

Ratio of SAR at M2 to SAR at M1 = 78.8%

[Info: Interpolated medium parameters used for SAR evaluation.](#)

Maximum value of SAR (measured) = 0.0545 W/kg



0 dB = 0.0545 W/kg = -12.64 dBW/kg

LTE Band 13 Main Ant 1

Frequency: 782 MHz; Duty Cycle: 1:1; Room Ambient Temperature: 24.0°C; Liquid Temperature: 23.0°C

Medium parameters used (interpolated): $f = 782$ MHz; $\sigma = 0.889$ S/m; $\epsilon_r = 43.466$; $\rho = 1000$ kg/m³

DASY5 Configuration:

- Area Scan Setting: Find Secondary Maximum Within: 2.0 dB and with a peak SAR value greater than 0.0012W/kg
- Electronics: DAE4 Sn1540; Calibrated: 1/11/2022
- Probe: EX3DV4 - SN7585; ConvF(10.52, 10.52, 10.52) @ 782 MHz; Calibrated: 4/27/2021
- Sensor-Surface: 1.4mm (Mechanical Surface Detection)
- Phantom: Twin-SAM V8.0 (30deg probe tilt); Type: QD 000 P41 Ax; Serial: xxxx

Rear/QPSK RB 25,0 Ch 23230/Area Scan (7x13x1): Measurement grid: dx=15mm, dy=15mm

[Info: Interpolated medium parameters used for SAR evaluation.](#)

Maximum value of SAR (measured) = 0.353 W/kg

Rear/QPSK RB 25,0 Ch 23230/Zoom Scan (5x5x7)/Cube 0: Measurement grid: dx=8mm, dy=8mm, dz=5mm

Reference Value = 18.80 V/m; Power Drift = -0.05 dB

Peak SAR (extrapolated) = 0.435 W/kg

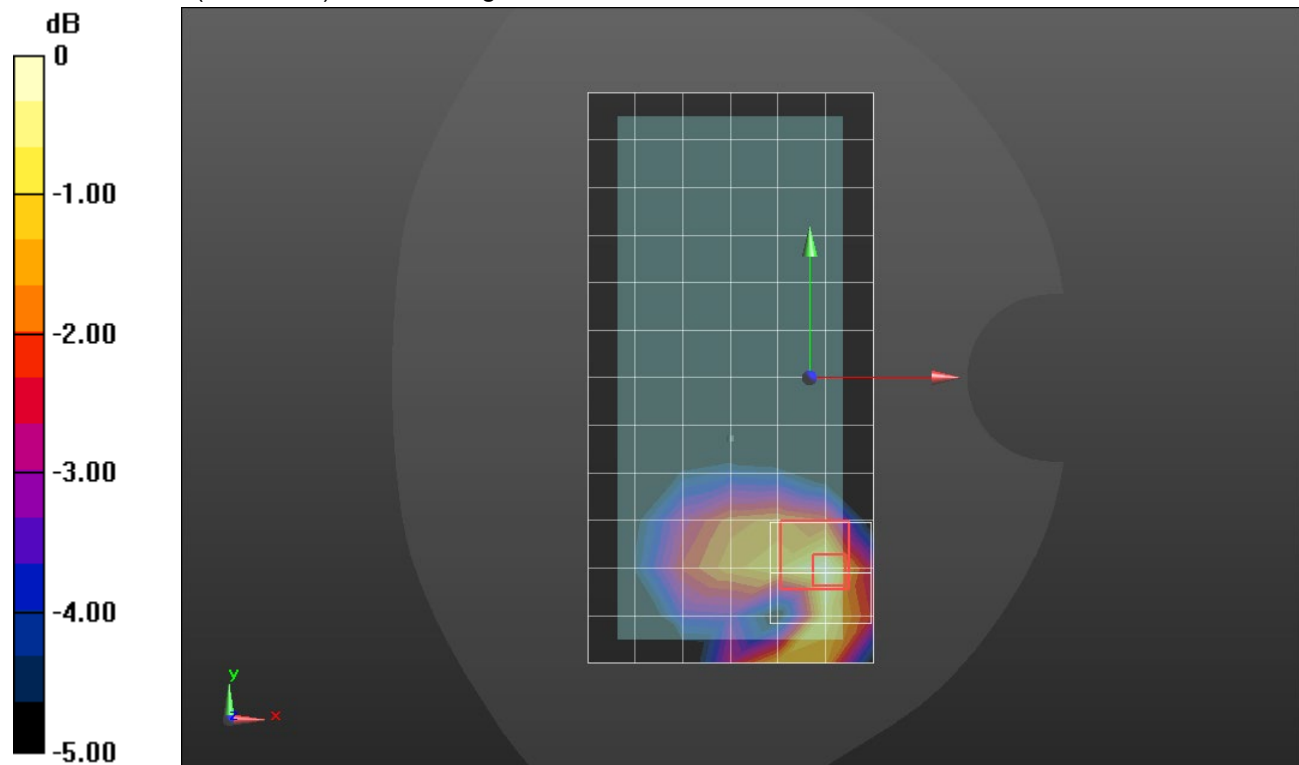
SAR(1 g) = 0.241 W/kg; SAR(10 g) = 0.142 W/kg

Smallest distance from peaks to all points 3 dB below = 13.7 mm

Ratio of SAR at M2 to SAR at M1 = 55%

[Info: Interpolated medium parameters used for SAR evaluation.](#)

Maximum value of SAR (measured) = 0.354 W/kg



LTE Band 17 Main Ant 1

Frequency: 710 MHz; Duty Cycle: 1:1; Room Ambient Temperature: 24.0°C; Liquid Temperature: 23.0°C

Medium parameters used: $f = 710$ MHz; $\sigma = 0.869$ S/m; $\epsilon_r = 43.73$; $\rho = 1000$ kg/m³

DASY5 Configuration:

- Area Scan Setting: Find Secondary Maximum Within: 2.0 dB and with a peak SAR value greater than 0.0012W/kg
- Electronics: DAE4 Sn1540; Calibrated: 1/11/2022
- Probe: EX3DV4 - SN7585; ConvF(10.52, 10.52, 10.52) @ 710 MHz; Calibrated: 4/27/2021
- Sensor-Surface: 1.4mm (Mechanical Surface Detection (Locations From Previous Scan Used)), Sensor-Surface: 1.4mm (Mechanical Surface Detection)
- Phantom: Twin-SAM V8.0 (30deg probe tilt); Type: QD 000 P41 Ax; Serial: xxxx

RHS/Touch_QPSK RB 25,0 Ch 23790/Area Scan (7x13x1): Measurement grid: dx=15mm, dy=15mm
Maximum value of SAR (measured) = 0.0165 W/kg

RHS/Touch_QPSK RB 25,0 Ch 23790/Zoom Scan (5x5x7)/Cube 0: Measurement grid: dx=8mm, dy=8mm, dz=5mm

Reference Value = 4.182 V/m; Power Drift = 0.19 dB

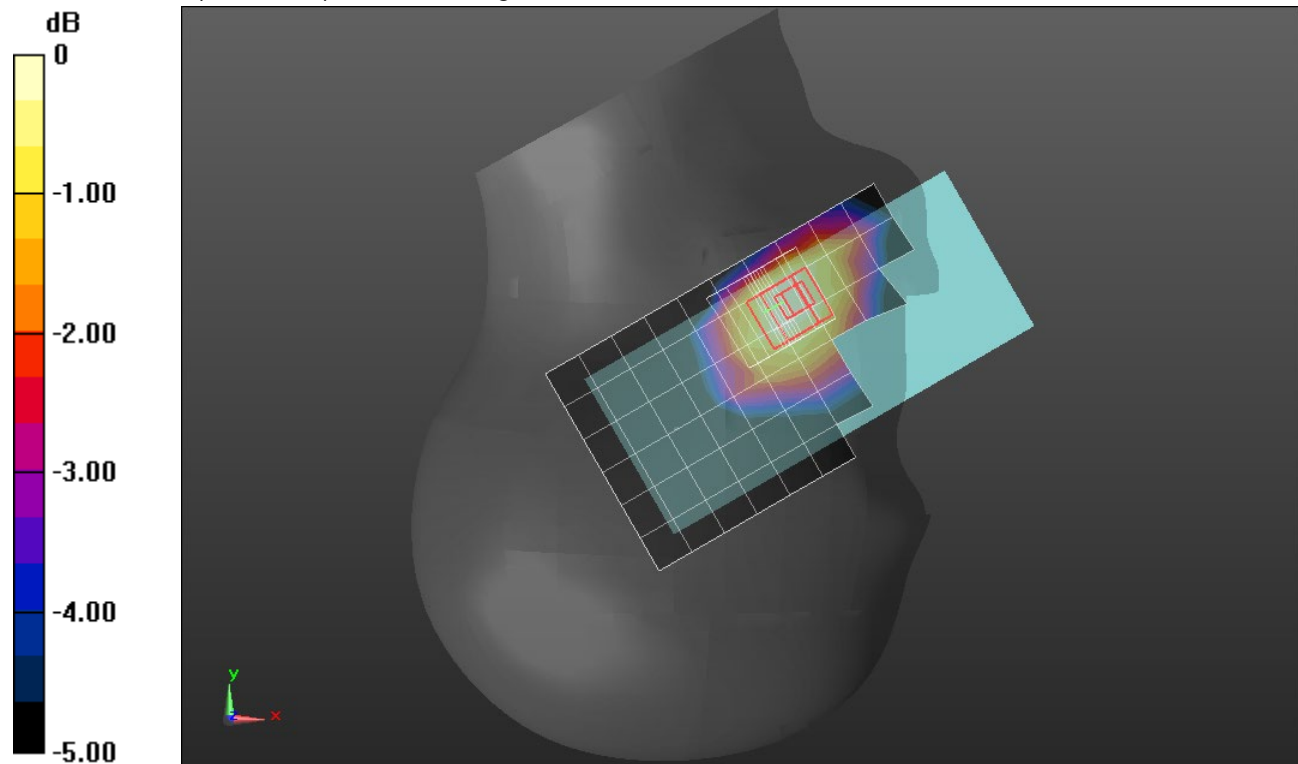
Peak SAR (extrapolated) = 0.0180 W/kg

SAR(1 g) = 0.014 W/kg; SAR(10 g) = 0.011 W/kg

Smallest distance from peaks to all points 3 dB below: Larger than measurement grid (> 16 mm)

Ratio of SAR at M2 to SAR at M1 = 78.7%

Maximum value of SAR (measured) = 0.0166 W/kg



0 dB = 0.0166 W/kg = -17.80 dBW/kg

LTE Band 17 Main Ant 1

Frequency: 710 MHz; Duty Cycle: 1:1; Room Ambient Temperature: 24.0°C; Liquid Temperature: 23.0°C

Medium parameters used: $f = 710$ MHz; $\sigma = 0.869$ S/m; $\epsilon_r = 43.73$; $\rho = 1000$ kg/m³

DASY5 Configuration:

- Area Scan Setting: Find Secondary Maximum Within: 2.0 dB and with a peak SAR value greater than 0.0012W/kg
- Electronics: DAE4 Sn1540; Calibrated: 1/11/2022
- Probe: EX3DV4 - SN7585; ConvF(10.52, 10.52, 10.52) @ 710 MHz; Calibrated: 4/27/2021
- Sensor-Surface: 1.4mm (Mechanical Surface Detection)
- Phantom: Twin-SAM V8.0 (30deg probe tilt); Type: QD 000 P41 Ax; Serial: xxxx

Rear/QPSK RB 25,0 Ch 23790/Area Scan (8x13x1): Measurement grid: dx=15mm, dy=15mm

Maximum value of SAR (measured) = 0.152 W/kg

Rear/QPSK RB 25,0 Ch 23790/Zoom Scan (5x5x7)/Cube 0: Measurement grid: dx=8mm, dy=8mm, dz=5mm

Reference Value = 12.43 V/m; Power Drift = -0.11 dB

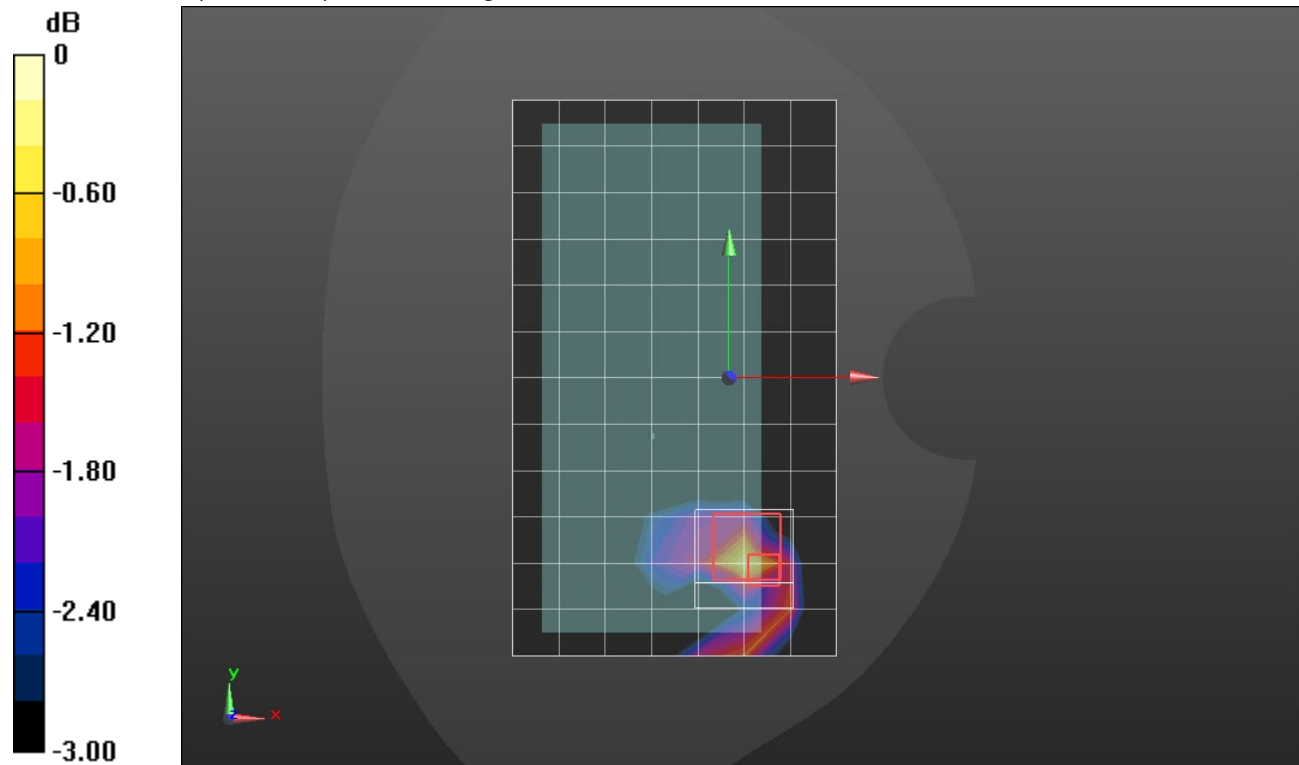
Peak SAR (extrapolated) = 0.202 W/kg

SAR(1 g) = 0.107 W/kg; SAR(10 g) = 0.063 W/kg

Smallest distance from peaks to all points 3 dB below = 12.2 mm

Ratio of SAR at M2 to SAR at M1 = 51.1%

Maximum value of SAR (measured) = 0.164 W/kg



0 dB = 0.164 W/kg = -7.85 dBW/kg

LTE Band 41 Main Ant 2

Frequency: 2593 MHz; Duty Cycle: 1:1.59956; Room Ambient Temperature: 24.0°C; Liquid Temperature: 23.0°C
Medium parameters used (interpolated): $f = 2593$ MHz; $\sigma = 1.974$ S/m; $\epsilon_r = 37.937$; $\rho = 1000$ kg/m³

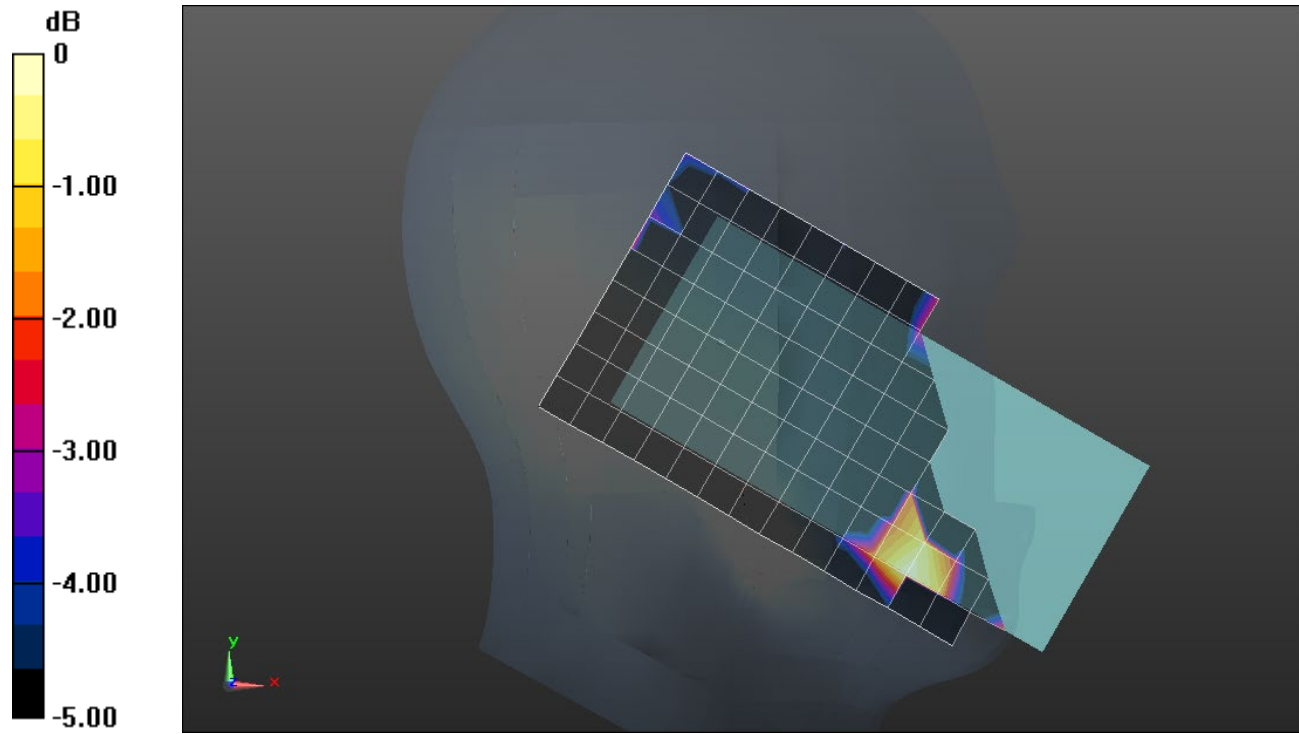
DASY5 Configuration:

- Area Scan Setting: Find Secondary Maximum Within: 2.0 dB and with a peak SAR value greater than 0.0012W/kg
- Electronics: DAE4 Sn1674; Calibrated: 6/4/2021
- Probe: EX3DV4 - SN3749; ConvF(6.93, 6.93, 6.93) @ 2593 MHz; Calibrated: 1/18/2022
- Sensor-Surface: 1.4mm (Mechanical Surface Detection)
- Phantom: SAM with CRP v5.0; Type: QD000P40CD; Serial: TP:xxxx

LHS/Touch_QPSK RB 1,0 Ch 40620/Area Scan (9x17x1): Measurement grid: dx=12mm, dy=12mm

[Info: Interpolated medium parameters used for SAR evaluation.](#)

Maximum value of SAR (measured) = 0.00283 W/kg



0 dB = 0.00283 W/kg = -25.48 dBW/kg

LTE Band 41 Main Ant 2

Frequency: 2593 MHz; Duty Cycle: 1:1.59956; Room Ambient Temperature: 24.0°C; Liquid Temperature: 23.0°C
Medium parameters used (interpolated): $f = 2593$ MHz; $\sigma = 1.974$ S/m; $\epsilon_r = 37.937$; $\rho = 1000$ kg/m³

DASY5 Configuration:

- Area Scan Setting: Find Secondary Maximum Within: 2.0 dB and with a peak SAR value greater than 0.0012W/kg
- Electronics: DAE4 Sn1674; Calibrated: 6/4/2021
- Probe: EX3DV4 - SN3749; ConvF(6.93, 6.93, 6.93) @ 2593 MHz; Calibrated: 1/18/2022
- Sensor-Surface: 1.4mm (Mechanical Surface Detection)
- Phantom: SAM with CRP v5.0; Type: QD000P40CD; Serial: TP:xxxx

Rear/QPSK RB 1,0 Ch 40620/Area Scan (9x17x1): Measurement grid: dx=12mm, dy=12mm

[Info: Interpolated medium parameters used for SAR evaluation.](#)

Maximum value of SAR (measured) = 0.244 W/kg

Rear/QPSK RB 1,0 Ch 40620/Zoom Scan (7x7x7)/Cube 0: Measurement grid: dx=5mm, dy=5mm, dz=5mm

Reference Value = 9.851 V/m; Power Drift = -0.13 dB

Peak SAR (extrapolated) = 0.355 W/kg

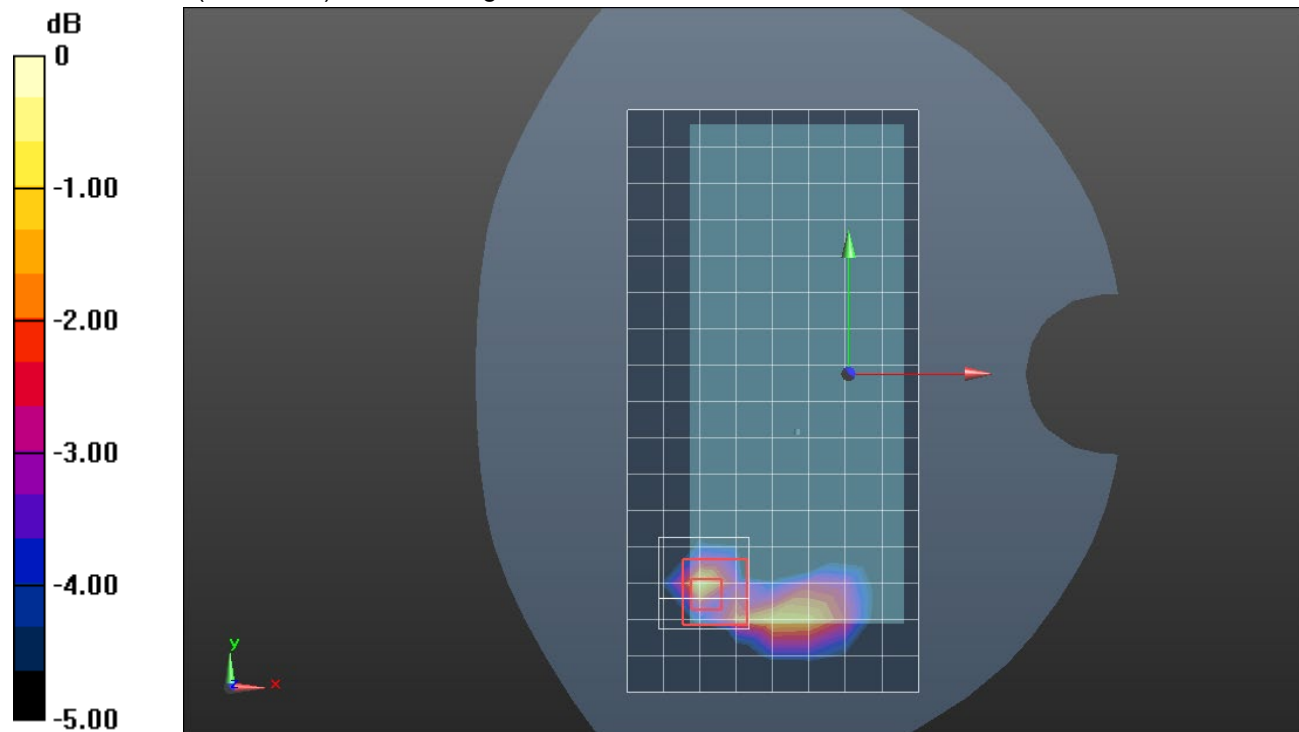
SAR(1 g) = 0.156 W/kg; SAR(10 g) = 0.069 W/kg

Smallest distance from peaks to all points 3 dB below = 6.4 mm

Ratio of SAR at M2 to SAR at M1 = 45.7%

[Info: Interpolated medium parameters used for SAR evaluation.](#)

Maximum value of SAR (measured) = 0.278 W/kg



0 dB = 0.278 W/kg = -5.56 dBW/kg

LTE Band 41 Main Ant 2

Frequency: 2593 MHz; Duty Cycle: 1:1.59956; Room Ambient Temperature: 24.0°C; Liquid Temperature: 23.0°C
Medium parameters used (interpolated): $f = 2593$ MHz; $\sigma = 1.974$ S/m; $\epsilon_r = 37.937$; $\rho = 1000$ kg/m³

DASY5 Configuration:

- Area Scan Setting: Find Secondary Maximum Within: 2.0 dB and with a peak SAR value greater than 0.0012W/kg
- Electronics: DAE4 Sn1674; Calibrated: 6/4/2021
- Probe: EX3DV4 - SN3749; ConvF(6.93, 6.93, 6.93) @ 2593 MHz; Calibrated: 1/18/2022
- Sensor-Surface: 1.4mm (Mechanical Surface Detection)
- Phantom: SAM with CRP v5.0; Type: QD000P40CD; Serial: TP:xxxx

Edge 2/QPSK RB 1,0 Ch 40620/Area Scan (6x17x1): Measurement grid: dx=12mm, dy=12mm

[Info: Interpolated medium parameters used for SAR evaluation.](#)

Maximum value of SAR (measured) = 0.0675 W/kg

Edge 2/QPSK RB 1,0 Ch 40620/Zoom Scan (7x7x7)/Cube 0: Measurement grid: dx=5mm, dy=5mm, dz=5mm

Reference Value = 5.334 V/m; Power Drift = 0.08 dB

Peak SAR (extrapolated) = 0.0890 W/kg

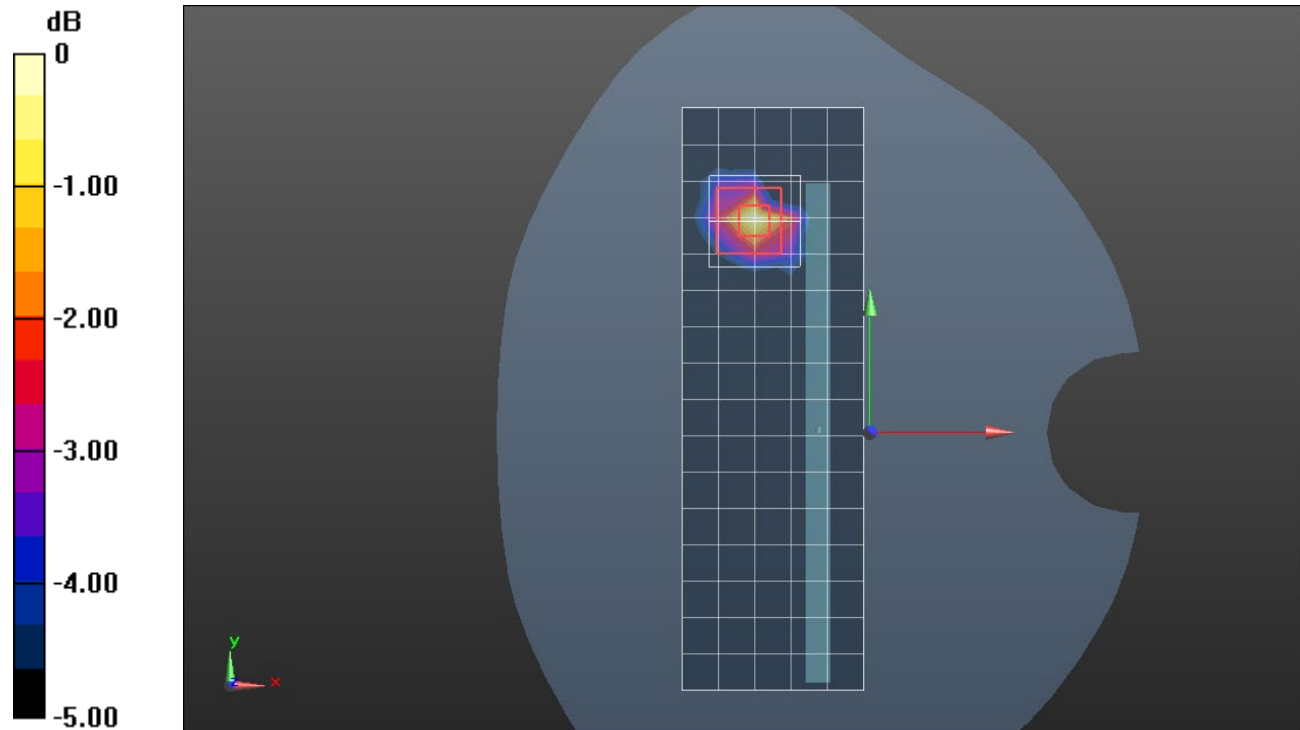
SAR(1 g) = 0.040 W/kg; SAR(10 g) = 0.018 W/kg

Smallest distance from peaks to all points 3 dB below: Larger than measurement grid (> 15 mm)

Ratio of SAR at M2 to SAR at M1 = 45.5%

[Info: Interpolated medium parameters used for SAR evaluation.](#)

Maximum value of SAR (measured) = 0.0685 W/kg



Wi-Fi 2.4GHz Chain 0

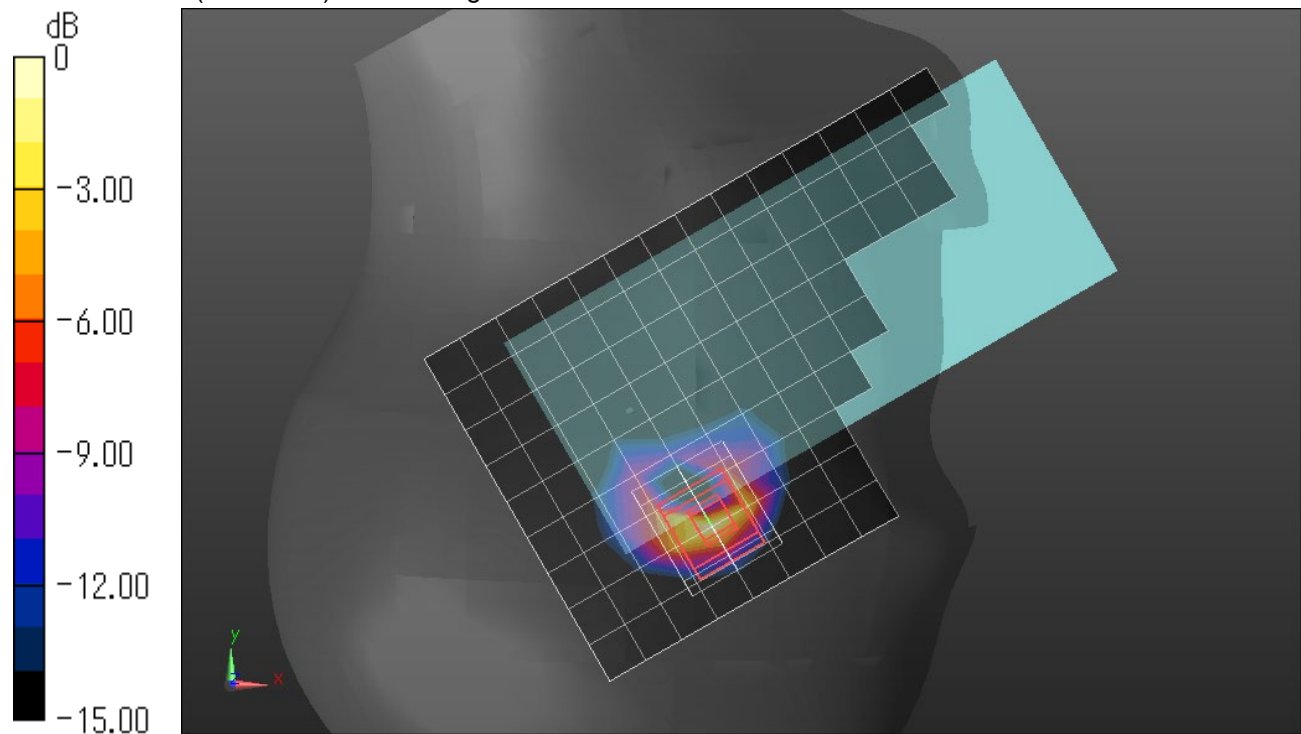
Frequency: 2462 MHz; Duty Cycle: 1:1; Room Ambient Temperature: 24.0°C; Liquid Temperature: 23.0°C
Medium parameters used (interpolated): $f = 2462$ MHz; $\sigma = 1.86$ S/m; $\epsilon_r = 37.983$; $\rho = 1000$ kg/m³

DASY5 Configuration:

- Area Scan Setting: Find Secondary Maximum Within: 2.0 dB and with a peak SAR value greater than 0.0012W/kg
- Electronics: DAE4ip Sn1619; Calibrated: 04/20/2021
- Probe: EX3DV4 - SN7335; ConvF(7.88, 7.88, 7.88) @ 2462 MHz; Calibrated: 01/20/2022
- Sensor-Surface: 1.4mm (Mechanical Surface Detection)
- Phantom: Twin-SAM V8.0 (20deg probe tilt); Type: QD 000 P41 Ax; Serial: xxxx

RHS/Touch_802.11b_ch 11/Area Scan (10x17x1): Measurement grid: dx=12mm, dy=12mm
Maximum value of SAR (measured) = 1.13 W/kg

RHS/Touch_802.11b_ch 11/Zoom Scan (7x7x7)/Cube 0: Measurement grid: dx=5mm, dy=5mm, dz=5mm
Reference Value = 22.40 V/m; Power Drift = 0.08 dB
Peak SAR (extrapolated) = 1.95 W/kg
SAR(1 g) = 0.636 W/kg; SAR(10 g) = 0.218 W/kg
Smallest distance from peaks to all points 3 dB below = 3.2 mm
Ratio of SAR at M2 to SAR at M1 = 44.8%
Maximum value of SAR (measured) = 1.16 W/kg



0 dB = 1.16 W/kg = 0.64 dBW/kg

Wi-Fi 5.3 GHz Chain 0

Frequency: 5250 MHz; Duty Cycle: 1:1; Room Ambient Temperature: 24.0°C; Liquid Temperature: 23.0°C

Medium parameters used: $f = 5250$ MHz; $\sigma = 4.613$ S/m; $\epsilon_r = 36.295$; $\rho = 1000$ kg/m³

DASY5 Configuration:

- Area Scan Setting: Find Secondary Maximum Within: 2.0 dB and with a peak SAR value greater than 0.0012W/kg
- Electronics: DAE4ip Sn1619; Calibrated: 04/20/2021
- Probe: EX3DV4 - SN7335; ConvF(5.39, 5.39, 5.39) @ 5250 MHz; Calibrated: 01/20/2022
- Sensor-Surface: 1.4mm (Mechanical Surface Detection)
- Phantom: Twin-SAM V8.0 (20deg probe tilt); Type: QD 000 P41 Ax; Serial: xxxx

RHS/Touch_802.11ac_VHT160_Ch 50/Area Scan (11x20x1): Measurement grid: dx=10mm, dy=10mm
Maximum value of SAR (measured) = 0.844 W/kg

RHS/Touch_802.11ac_VHT160_Ch 50/Zoom Scan (8x9x12)/Cube 0: Measurement grid: dx=4mm, dy=4mm, dz=2mm

Reference Value = 11.99 V/m; Power Drift = 0.09 dB

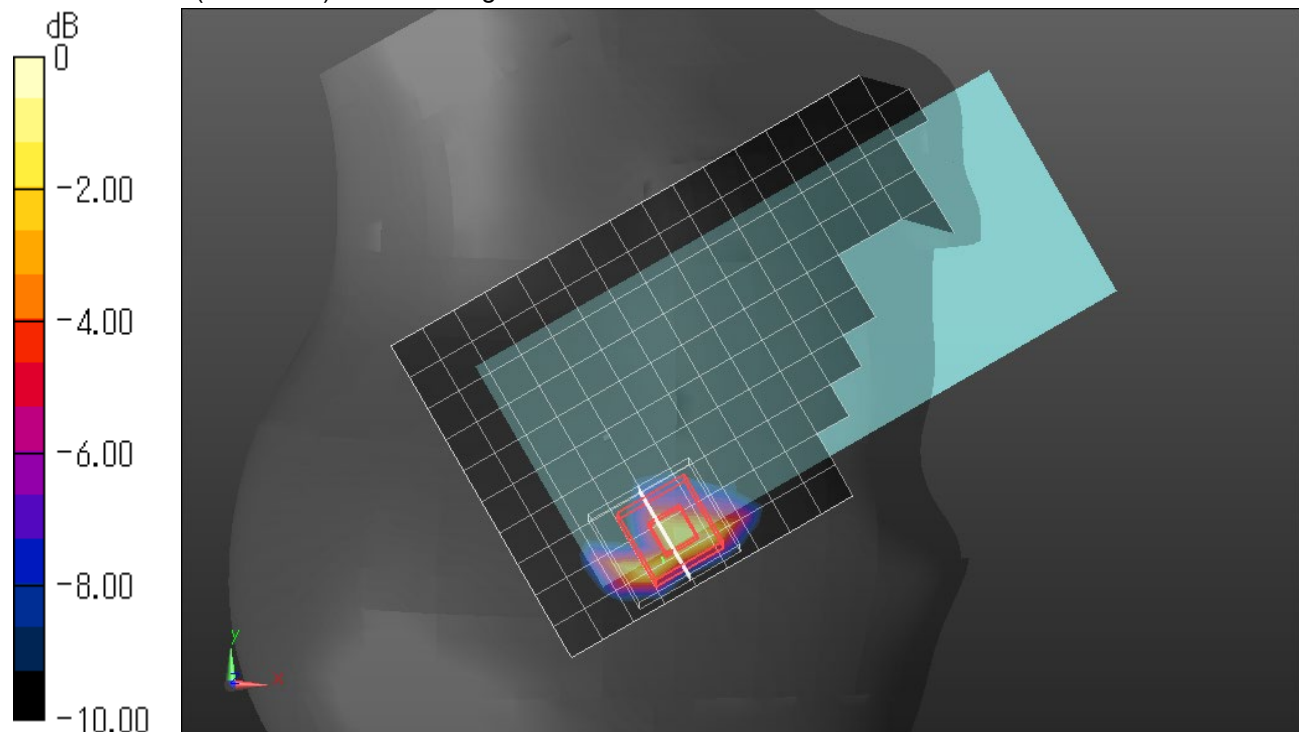
Peak SAR (extrapolated) = 1.69 W/kg

SAR(1 g) = 0.323 W/kg; SAR(10 g) = 0.102 W/kg

Smallest distance from peaks to all points 3 dB below = 4.1 mm

Ratio of SAR at M2 to SAR at M1 = 52.5%

Maximum value of SAR (measured) = 0.951 W/kg



0 dB = 0.951 W/kg = -0.22 dBW/kg

Bluetooth Chain 0

Frequency: 2480 MHz; Duty Cycle: 1:1; Room Ambient Temperature: 24.0°C; Liquid Temperature: 23.0°C

Medium parameters used: $f = 2480$ MHz; $\sigma = 1.867$ S/m; $\epsilon_r = 37.879$; $\rho = 1000$ kg/m³

DASY5 Configuration:

- Area Scan Setting: Find Secondary Maximum Within: 2.0 dB and with a peak SAR value greater than 0.0012W/kg
- Electronics: DAE4ip Sn1619; Calibrated: 04/20/2021
- Probe: EX3DV4 - SN7335; ConvF(7.88, 7.88, 7.88) @ 2480 MHz; Calibrated: 01/20/2022
- Sensor-Surface: 1.4mm (Mechanical Surface Detection)
- Phantom: Twin-SAM V8.0 (20deg probe tilt); Type: QD 000 P41 Ax; Serial: xxxx

RHS/Touch_GFSK DH5_ch78/Area Scan (10x17x1): Measurement grid: dx=12mm, dy=12mm
Maximum value of SAR (measured) = 0.330 W/kg

RHS/Touch_GFSK DH5_ch78/Zoom Scan (7x7x7)/Cube 0: Measurement grid: dx=5mm, dy=5mm, dz=5mm

Reference Value = 11.83 V/m; Power Drift = -0.11 dB

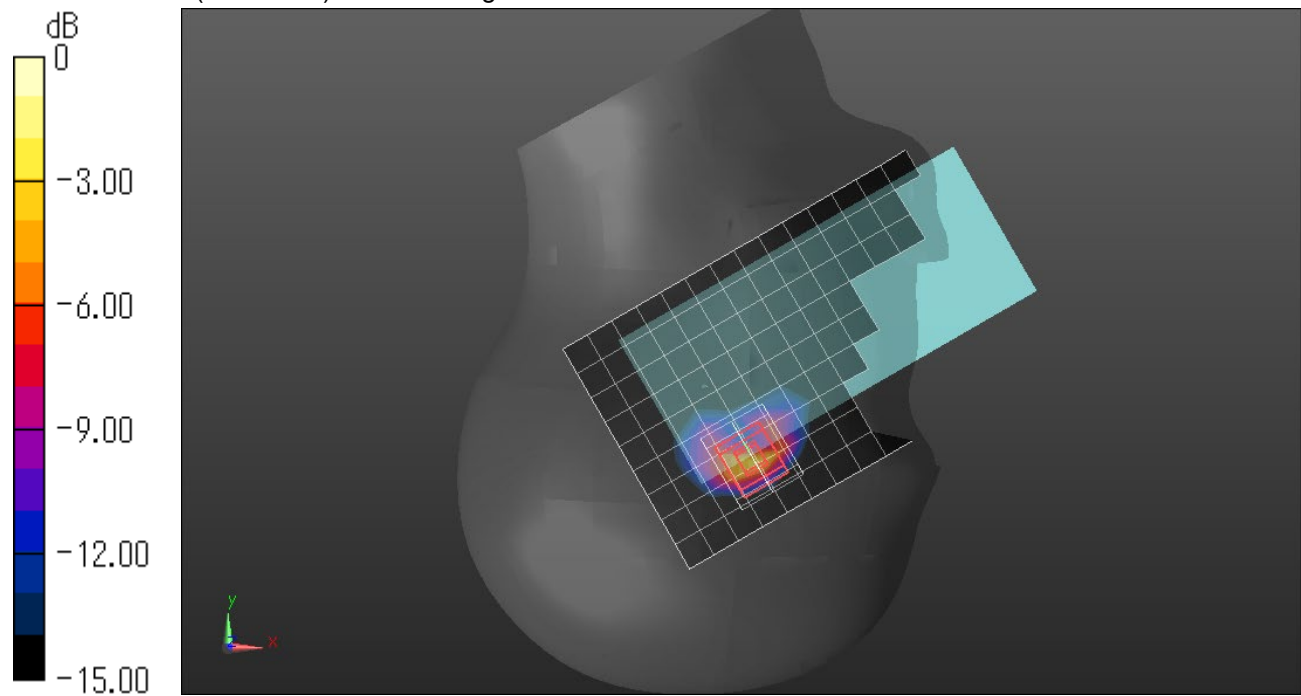
Peak SAR (extrapolated) = 0.772 W/kg

SAR(1 g) = 0.252 W/kg; SAR(10 g) = 0.088 W/kg

Smallest distance from peaks to all points 3 dB below = 4.1 mm

Ratio of SAR at M2 to SAR at M1 = 33.1%

Maximum value of SAR (measured) = 0.495 W/kg



0 dB = 0.495 W/kg = -3.05 dBW/kg

Wi-Fi 5.3 GHz Chain 0 Extremity

Frequency: 5250 MHz; Duty Cycle: 1:1; Room Ambient Temperature: 24.0°C; Liquid Temperature: 23.0°C

Medium parameters used: $f = 5250$ MHz; $\sigma = 4.587$ S/m; $\epsilon_r = 34.641$; $\rho = 1000$ kg/m³

DASY5 Configuration:

- Area Scan Setting: Find Secondary Maximum Within: 2.0 dB and with a peak SAR value greater than 0.0012W/kg
- Electronics: DAE4ip Sn1619; Calibrated: 04/20/2021
- Probe: EX3DV4 - SN7335; ConvF(5.39, 5.39, 5.39) @ 5250 MHz; Calibrated: 01/20/2022
- Sensor-Surface: 1.4mm (Mechanical Surface Detection)
- Phantom: Twin-SAM V8.0 (20deg probe tilt); Type: QD 000 P41 Ax; Serial: xxxx

Edge 4/802.11ac_VHT160_Ch 50/Area Scan (8x21x1): Measurement grid: dx=10mm, dy=10mm
Maximum value of SAR (measured) = 2.66 W/kg

Edge 4/802.11ac_VHT160_Ch 50/Zoom Scan (9x9x12)/Cube 0: Measurement grid: dx=4mm, dy=4mm, dz=2mm

Reference Value = 20.72 V/m; Power Drift = -0.19 dB

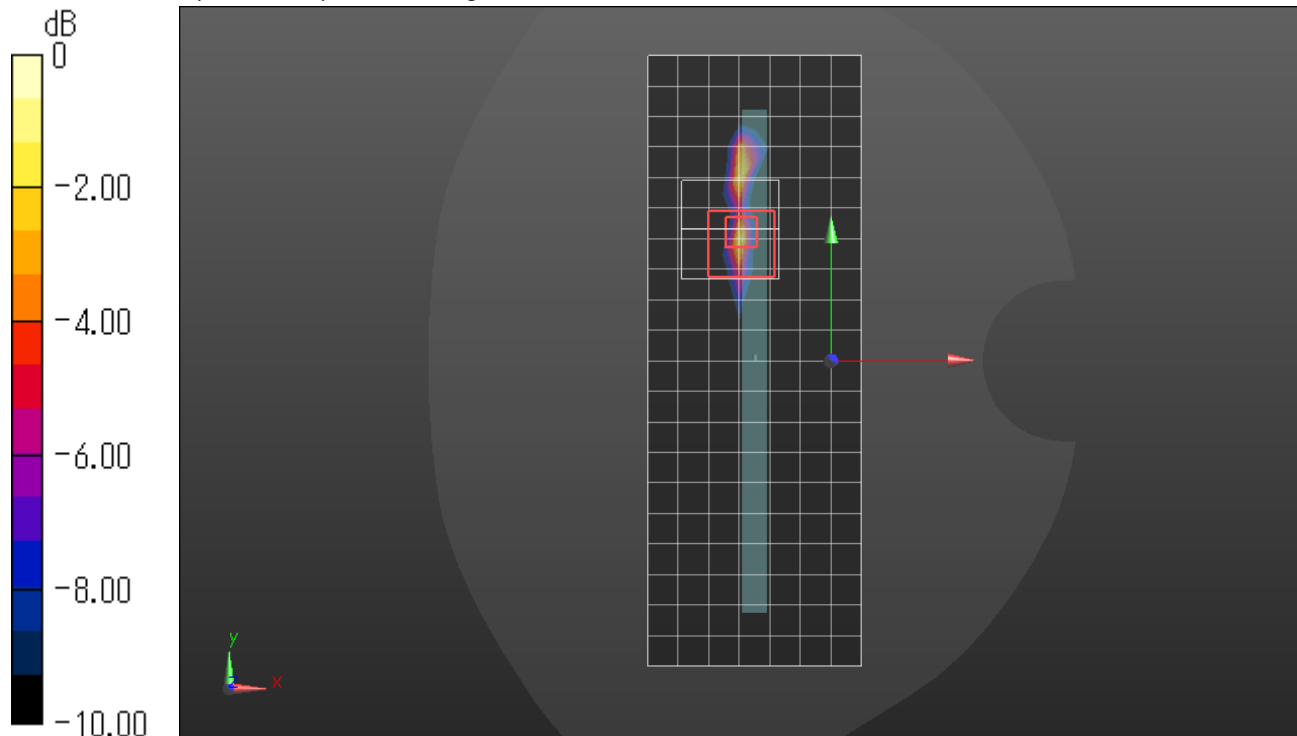
Peak SAR (extrapolated) = 5.77 W/kg

SAR(1 g) = 0.934 W/kg; SAR(10 g) = 0.196 W/kg

Smallest distance from peaks to all points 3 dB below = 3.6 mm

Ratio of SAR at M2 to SAR at M1 = 52.7%

Maximum value of SAR (measured) = 3.03 W/kg



0 dB = 3.03 W/kg = 4.81 dBW/kg