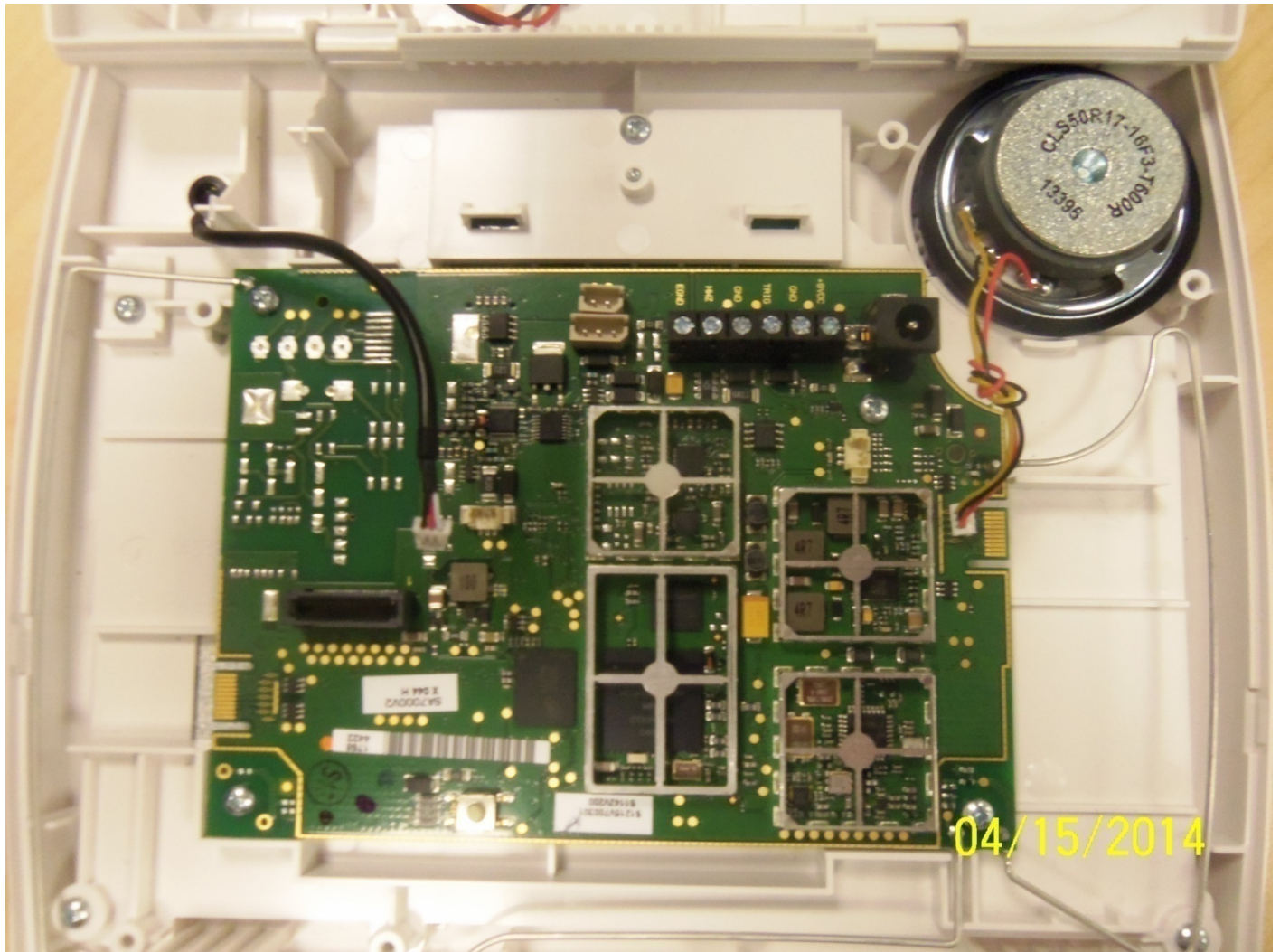


LYNXTOUCH3 INTERNAL PHOTOS

CASE OPEN



NOTES:

- 1: GSM Module not installed.
- 2: WiFi Module not installed.
- 3: Z-Wave Module not installed.

LYNXTOUCH3 INTERNAL PHOTOS CONT.

CASE OPEN



NOTES:
Main Security PCB Assembly un-mounted

LYNXTOUCH3 INTERNAL PHOTOS CONT.

INTERIOR PLASTIC INSERT, LCD, & PCA

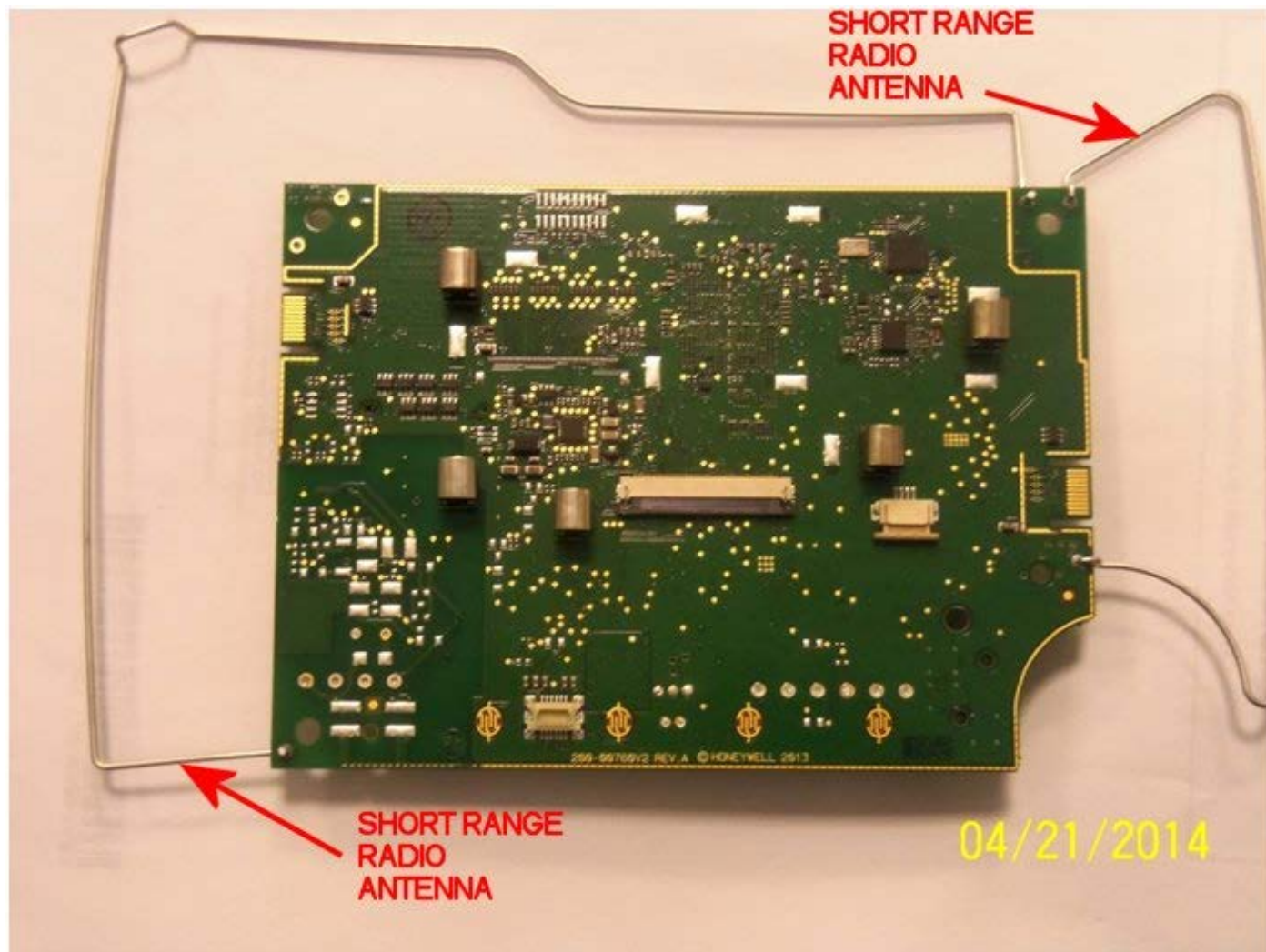


NOTES:

- 1: Main Security PCB Assembly removed from case
- 2: This is a back view of the display.

LYNXTOUCH3 INTERNAL PHOTOS CONT.

PCA BOTTOM SIDE

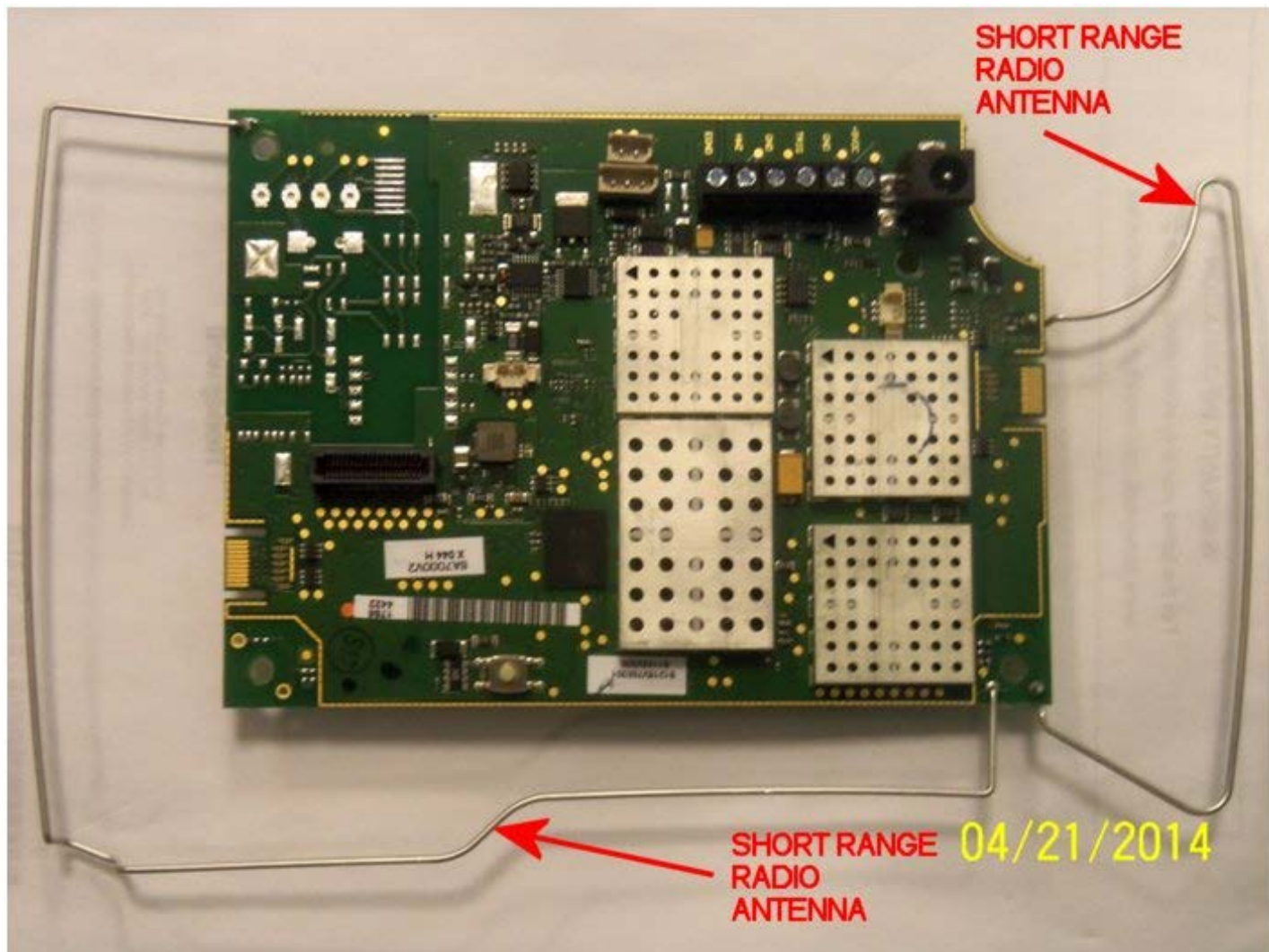


NOTES:

- 1: Main Security PCB Assembly removed from case (Bottom side view, from display side).

LYNXTOUCH3 INTERNAL PHOTOS CONT.

PCA TOP SIDE

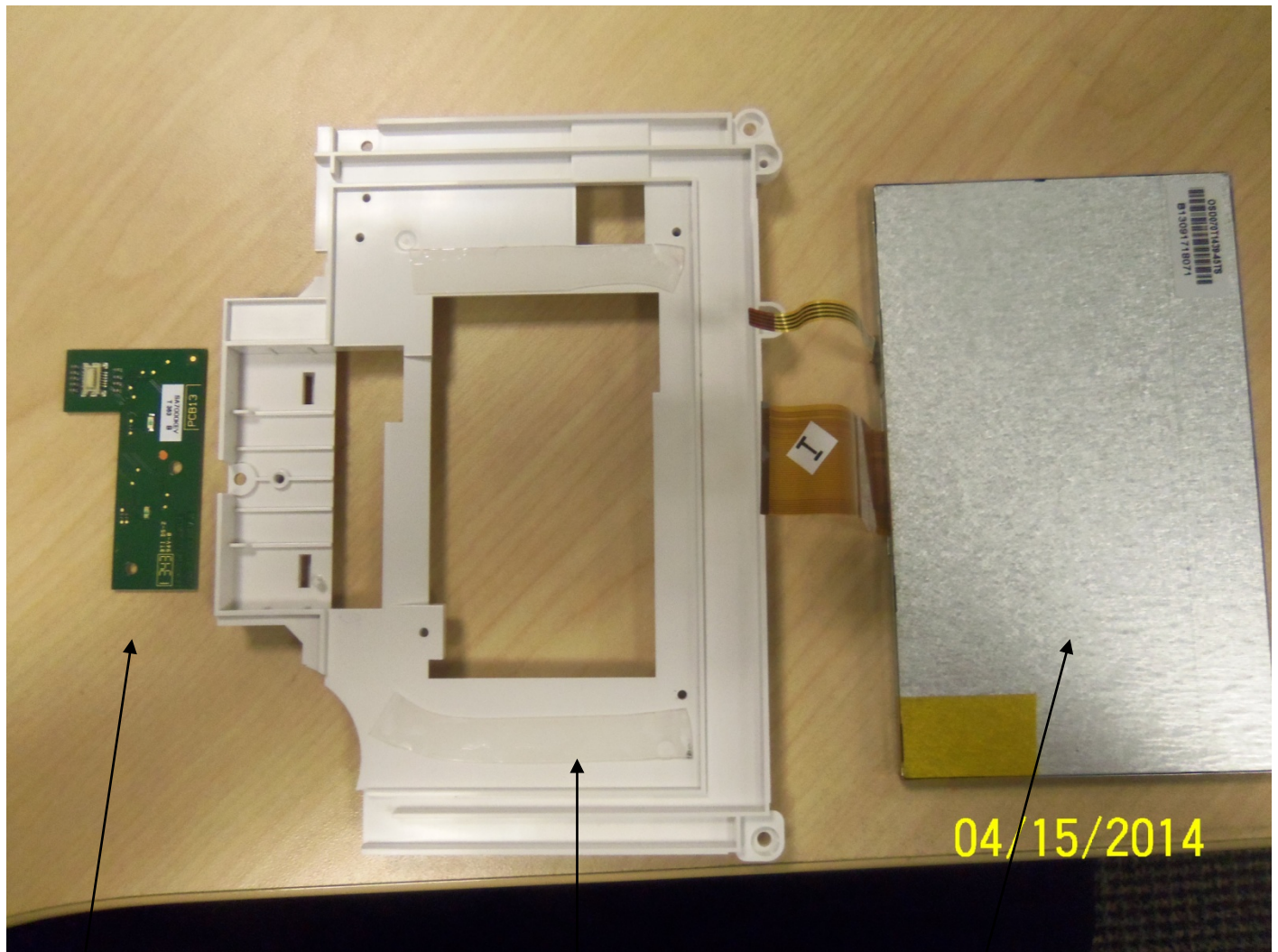


NOTES:

- 1: Main Security PCB Assembly removed from case
(Closer view of top side).

LYNXTOUCH3 INTERNAL PHOTOS CONT.

KEYPAD PCA PLASTIC INSERT, LCD



Keypad & LED PCB
Assembly/

Main Security Assembly/ Display
Mounting bracket

Display, rear view

NOTES:

- 1: Main Security PCB Assembly removed from case
(Closer view of top side).