




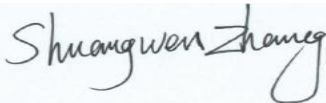

FCC SAR TEST REPORT

Report No.: SET2015-14025
Product: Mobile phone
Brand Name: Haier
Model No.: G31
FCC ID: SG720151015G31
Applicant: Haier Telecom (Qingdao) Co.,Ltd.
Address: No.1 Haier Road, Hi-tech Zone, Qingdao, China
Issued by: CCIC-SET
Lab Location: Electronic Testing Building, Shahe Road, Xili, Nanshan District, Shenzhen, 518055, P. R. China
Tel: 86 755 26627338 **Fax:** 86 755 26627238
Mail: manager@ccic-set.com **Website:** <http://www.ccic-set.com>

This test report consists of **123** pages in total. It may be duplicated completely for legal use with the approval of the applicant. It should not be reproduced except in full, without the written approval of our laboratory. The client should not use it to claim product endorsement by CCIC-SET. The test results in the report only apply to the tested sample. The test report shall be invalid without all the signatures of testing engineers, reviewer and approver. Any objections must be raised to CCIC-SET within 15 days since the date when the report is received. It will not be taken into consideration beyond this limit.



Test Report

Product.: Mobile phone
Model No.: G31
Brand Name.....: Haier
FCC ID.....: SG720151015G31
Applicant.....: Haier Telecom (Qingdao) Co.,Ltd.
Applicant Address.....: No.1 Haier Road, Hi-tech Zone, Qingdao, China
Manufacturer.....: Haier Telecom (Qingdao) Co.,Ltd.
Manufacturer Address: No.1 Haier Road, Hi-tech Zone, Qingdao, China
Test Standards.....: **47CFR § 2.1093-** Radiofrequency Radiation Exposure Evaluation: Portable Devices;
ANSI C95.1-1992: Safety Levels with Respect to Human Exposure to Radio Frequency Electromagnetic Fields, 3 kHz – 300 GHz.(IEEE Std C95.1-1991)
IEEE 1528-2013: IEEE Recommended Practice for Determining the Peak Spatial-Average Specific Absorption Rate (SAR) in the Human Body Due to Wireless Communications Devices: Experimental Techniques;
Test Result.....: Pass
Tested by:  2015-10-08
Chun Mei, Test Engineer
Reviewed by.....:  2015-10-08
Shuangwen Zhang, Senior Engineer
Approved by.....:  2015-10-08
Wu Lian, Manager

Contents

1. GENERAL CONDITIONS	4
2. ADMINISTRATIVE DATA	5
2.1. Identification of the Responsible Testing Laboratory	5
2.2. Identification of the Responsible Testing Location(s)	5
2.3. Organization Item	5
2.4. Identification of Applicant	5
2.5. Identification of Manufacture	5
3. EQUIPMENT UNDER TEST (EUT)	6
4. SAR SUMMAY	7
5. Specific Absorption Rate(SAR)	8
5.1. Introduction	8
5.2. SAR Definition	8
5.3. Phantoms	9
5.4. Device Holder	9
5.5. Probe Specification	10
6. OPERATIONAL CONDITIONS DURING TEST	11
6.1. Schematic Test Configuration	11
6.2. SAR Measurement System	11
6.3. Equipments and results of validation testing	14
6.4. SAR measurement procedure	16
6.5. Antennas position and test position	17
7. CHARACTERISTICS OF THE TEST	18
7.1. Applicable Limit Regulations	18
7.2. Applicable Measurement Standards	18
8. LABORATORY ENVIRONMENT	19
9. CONDUCTED RF OUTPUT POWER	19
10. TEST RESULTS	27
11. MEASUREMENT UNCERTAINTY	31
12. MAIN TEST INSTRUMENTS	34

This Test Report consists of the following Annexes:

Annex A: Test Layout	35
Annex B: Sample Photographs	42
Annex C: System Performance Check Data and Highest SAR Plots	44
Annex D: Calibration Certificate of Probe and Dipoles	76

1. GENERAL CONDITIONS

1.1 This report only refers to the item that has undergone the test.

1.2 This report standalone does not constitute or imply by its own an approval of the product by the certification Bodies or competent Authorities.

1.3 This document is only valid if complete; no partial reproduction can be made without written approval of CCIC-SET

1.4 This report cannot be used partially or in full for publicity and/or promotional purposes without previous written approval of CCIC-SET and the Accreditation Bodies, if it applies.



2. Administrative Date

2.1. Identification of the Responsible Testing Laboratory

Company Name: CCIC-SET

Department: EMC & RF Department

Address: Electronic Testing Building, Shahe Road, Nanshan District,
ShenZhen, P. R. China

Telephone: +86-755-26629676

Fax: +86-755-26627238

Responsible Test Lab Managers: Mr. Wu Li'an

2.2. Identification of the Responsible Testing Location(s)

Company Name: CCIC-SET

Address: Electronic Testing Building, Shahe Road, Nanshan District,
Shenzhen, P. R. China

2.3. Organization Item

CCIC-SET Report No.: SET2015-14025

CCIC-SET Project Leader: Mr. Li Sixiong

CCIC-SET Responsible for accreditation scope: Mr. Wu Li'an

Start of Testing: 2015-09-21

End of Testing: 2015-09-25

2.4. Identification of Applicant

Company Name: Haier Telecom (Qingdao) Co.,Ltd.

Address: No.1 Haier Road, Hi-tech Zone, Qingdao, China

2.5. Identification of Manufacture

Company Name: Haier Telecom (Qingdao) Co.,Ltd.

Address: No.1 Haier Road, Hi-tech Zone, Qingdao, China

Notes: This data is based on the information by the applicant.

3. Equipment Under Test (EUT)

3.1. Identification of the Equipment under Test

Sample Name: G31

Type Name: G31

Brand Name: Haier

General description:	Support Band	GSM850MHz/1900MHz/900MHz/1800MHz WCDMA 850MHz/1900MHz,WIFI, BT
	Test Band	GSM 850MHz/ GSM 1900MHz, GPRS 850MHz/ GPRS 1900MHz, WCDMA 850MHz/ WCDMA 1900MHz WIFI 802.11b
	Multislot Class	GPRS: Class 12 ; EDGE: Class 12
	GPRS Class	Class B
	Development Stage	Identical Prototype
	Accessories	Power Supply
	Battery type	3.8V 2000mAh
	Antenna type	Inner Antenna
	Operation mode	GSM / GPRS /WCDMA/WIFI
	Modulation mode	GSM(GMSK),UMTS(QPSK),WIFI(OFDM/DSSS)
	Max. RF Power	32.57dBm
	Max. SAR Value	Head: 1.139 W/kg; Body: 0.986 W/kg; Hotspot: 1.083 W/kg

NOTE:

- The above EUT's information was declared by manufacturer. Please refer to the specifications or user's manual for more detailed description.
- This device supports GPRS operation up to class12 (max.uplin:4, max.downlink:4, total timeslots:5). This device supports EDGE operation up to class12(max.uplin:4, max.downlink:4, total timeslots:5)

4 SAR SUMMARY

Highest Standalone SAR Summary

Exposure Position	Frequency Band	Scaled 1g-SAR(W/kg)	Highest Scaled 1g-SAR(W/kg)
Head	GSM850	0.198	1.139
	GSM1900	0.135	
	WCDMA Band II	0.338	
	WCDMA Band V	0.182	
	WIFI	1.139	
Body-worn Accessory (10mm Gap)	GSM850	0.354	0.986
	GSM1900	0.986	
	WCDMA Band II	0.671	
	WCDMA Band V	0.362	
	WIFI	0.244	
Hotspot Accessory (10mm Gap)	GSM850	0.269	1.083
	GSM1900	0.900	
	WCDMA Band II	1.083	
	WCDMA Band V	0.362	
	WIFI	0.383	

Highest Simultaneous SAR Summary

Exposure Position	Frequency Band	Scaled 1g-SAR(W/kg)	Highest Scaled 1g-SAR(W/kg)
Head	GSM850&WIFI	0.138+1.139	1.283
	GSM1900&WIFI	0.056+1.139	
	WCDMA Band II &WIFI	0.080+1.139	
	WCDMA Band V &WIFI	0.144+1.139	
Body-worn Accessory (10mm Gap)	GSM850&WIFI	0.354+0.244	1.230
	GSM1900&WIFI	0.986+0.244	
	WCDMA Band II &WIFI	0.671+0.244	
	WCDMA Band V &WIFI	0.362+0.244	
Hotspot Accessory (10mm Gap)	GSM850&WIFI	0.269+0.221	1.083
	GSM1900&WIFI	0.721+0.194	
	WCDMA Band II &WIFI	1.083	
	WCDMA Band V &WIFI	0.362+0.244	

5 Specific Absorption Rate (SAR)

5.1 Introduction

SAR is related to the rate at which energy is absorbed per unit mass in an object exposed to a radio field. The SAR distribution in a biological body is complicated and is usually carried out by experimental techniques or numerical modeling. The standard recommends limits for two tiers of groups, occupational/controlled and general population/uncontrolled, based on a person's awareness and ability to exercise control over his or her exposure. In general, occupational/controlled exposure limits are higher than the limits for general population/uncontrolled.

5.2 SAR Definition

The SAR definition is the time derivative (rate) of the incremental energy (dW) absorbed by (dissipated in) an incremental mass (dm) contained in a volume element (dv) of a given density (ρ). The equation description is as below:

$$\text{SAR} = \frac{d}{dt} \left(\frac{dW}{dm} \right) = \frac{d}{dt} \left(\frac{dW}{\rho dv} \right)$$

SAR is expressed in units of Watts per kilogram (W/kg)

SAR measurement can be either related to the temperature elevation in tissue by

$$\text{SAR} = C \frac{\delta T}{\delta t}$$

where C is the specific heat capacity, δT is the temperature rise and δt the exposure duration, or related to the electrical field in the tissue by

$$\text{SAR} = \frac{\sigma |E|^2}{\rho}$$

where σ is the conductivity of the tissue, ρ is the mass density of the tissue and E is the rms electrical field strength.

However for evaluating SAR of low power transmitter, electrical field measurement is typically applied.

5.3 Phantoms

The phantom used for all tests i.e. for both system checks and device testing, was the twin-headed "SAM Phantom", manufactured by SATIMO. The SAM twin phantom is a fiberglass shell phantom with 2mm shell thickness (except the ear region, where shell thickness increases to 6mm).

System checking was performed using the flat section, whilst Head SAR tests used the left and right head profile sections. Body SAR testing also used the flat section between the head profiles.

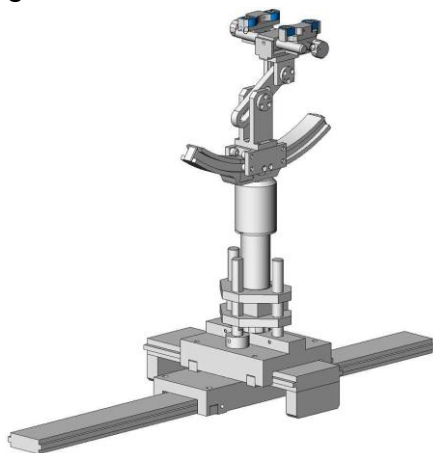


SAM Twin Phantom

5.4 Device Holder

The device was placed in the device holder (illustrated below) that is supplied by SATIMO as an integral part of the COMOSAR test system.

The device holder is designed to cope with the different positions given in the standard. It has two scales for device rotation (with respect to the body axis) and device inclination (with respect to the line between the ear reference points). The rotation centers for both scales is the ear reference point (ERP). Thus the device needs no repositioning when changing the angles.



Device holder

5.5 Probe Specification

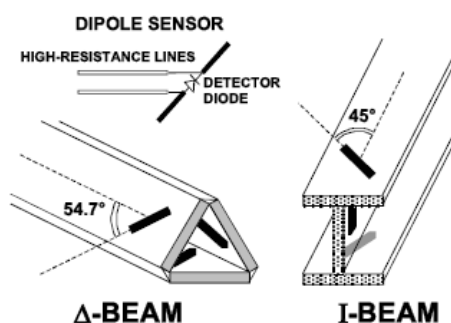


Construction	Symmetrical design with triangular core Interleaved sensors Built-in shielding against static charges PEEK enclosure material (resistant to organic solvents, e.g., DGBE)
Calibration	ISO/IEC 17025 calibration service available.
Frequency	700 MHz to 3 GHz; Linearity: ± 0.5 dB (700 MHz to 3 GHz)
Directivity	± 0.25 dB in HSL (rotation around probe axis) ± 0.5 dB in tissue material (rotation normal to probe axis)
Dynamic Range	1.5 μ W/g to 100 mW/g; Linearity: ± 0.5 dB
Dimensions	Overall length: 330 mm (Tip: 20 mm) Tip diameter: 5 mm Distance from probe tip to dipole centers: <2.7 mm
Application	General dosimetry up to 3 GHz Dosimetry in strong gradient fields Compliance tests of mobile phones
Compatibility	COMOSAR

Isotropic E-Field Probe

The isotropic E-Field probe has been fully calibrated and assessed for isotropicity, and boundary effect within a controlled environment. Depending on the frequency for which the probe is calibrated the method utilized for calibration will change.

The E-Field probe utilizes a triangular sensor arrangement as detailed in the diagram below:



6 OPERATIONAL CONDITIONS DURING TEST

6.1 Schematic Test Configuration

During SAR test, EUT was operating in Traffic Mode (Channel Allocated) at Normal Voltage Condition. A communication link is set up with a System Simulator (SS) by air link, and a call is established.

The Absolute Radio Frequency Channel Number (ARFCN) was allocated to 128, 189 and 251 respectively in the case of GSM 850MHz, or to 512, 661 and 810 respectively in the case of PCS 1900MHz, or to 4132, 4182 and 4233 respectively in the case of WCDMA 850MHz, or to 9262, 9400 and 9538 respectively in the case of WCDMA 1900MHz, and WIFI 802.11b. The EUT was commanded to operate at maximum transmitting power.

The EUT should use its internal transmitter. The antenna(s), battery and accessories shall be those specified by the manufacturer. The EUT battery must be fully charged and checked periodically during the test to ascertain uniform power output. If a wireless link was used, the antenna connected to the output of the base station simulator shall be placed at least 50 cm away from the handset.

The signal transmitted by the simulator to the antenna feeding point should be lower than the output power level of the handset by at least 35 dB

6.2 SAR Measurement System

The SAR measurement system being used is the SATIMO system, the system is controlled remotely from a PC, which contains the software to control the robot and data acquisition equipment. The software also displays the data obtained from test scans.

In operation, the system first does an area (2D) scan at a fixed depth within the liquid from the inside wall of the phantom. When the maximum SAR point has been found, the system will then carry out a 3D scan centred at that point to determine volume averaged SAR level.

6.2.1 Tissue Dielectric Parameters for Head and Body Phantoms

The head tissue dielectric parameters recommended by the IEEE SCC-34/SC-2 in P1528 have been incorporated in the following table. These head parameters are derived from planar layer models simulating the highest expected SAR for the dielectric properties and tissue thickness Power drifts in a human head. Other head and body tissue parameters that have not been specified in P1528 are derived from the tissue dielectric parameters computed from the 4-Cole-Cole equations described in Reference [12] and extrapolated according to the head parameters specified in P1528.

Table 1: Recommended Dielectric Performance of Tissue

Ingredients (% by weight)	Frequency (MHz)									
	450		835		915		1900		2450	
Tissue Type	Head	Body	Head	Body	Head	Body	Head	Body	Head	Body
Water	38.56	51.16	41.46	52.4	41.05	56.0	54.9	40.4	62.7	73.2
Salt (Nacl)	3.95	1.49	1.45	1.4	1.35	0.76	0.18	0.5	0.5	0.04
Sugar	56.32	46.78	56.0	45.0	56.5	41.76	0.0	58.0	0.0	0.0
HEC	0.98	0.52	1.0	1.0	1.0	1.21	0.0	1.0	0.0	0.0
Bactericide	0.19	0.05	0.1	0.1	0.1	0.27	0.0	0.1	0.0	0.0
Triton x-100	0.0	0.0	0.0	0.0	0.0	0.0	0.0	0.0	36.8	0.0
DGBE	0.0	0.0	0.0	0.0	0.0	0.0	44.92	0.0	0.0	26.7
Dielectric Constant	43.42	58.0	42.54	56.1	42.0	56.8	39.9	54.0	39.8	52.5
Conductivity (s/m)	0.85	0.83	0.91	0.95	1.0	1.07	1.42	1.45	1.88	1.78

Table 2 Recommended Tissue Dielectric Parameters

Frequency (MHz)	Head Tissue		Body Tissue	
	ϵ_r	$\sigma(S/m)$	ϵ_r	$\sigma(S/m)$
150	52.3	0.76	61.9	0.80
300	45.3	0.87	58.2	0.92
450	43.5	0.87	56.7	0.94
835	41.5	0.90	55.2	0.97
900	41.5	0.97	55.0	1.05
915	41.5	0.98	55.0	1.06
1450	40.5	1.20	54.0	1.30
1610	40.3	1.29	53.8	1.40
1800-2000	40.0	1.40	53.3	1.52
2450	39.2	1.80	52.7	1.95
3000	38.5	2.40	52.0	2.73
5800	35.3	5.27	48.2	6.00

6.2.2 Stimulant liquids

For measurements against the phantom head, the “cheek” and “tilt” position on both the left hand and the right hand sides of the phantom. For body-worn measurements, the EUT was tested against flat phantom representing the user body. The EUT was put on in the belt holder. Stimulant liquids that are used for testing at frequencies of GSM 850MHz/1900MHz, WCDMA850MHz/1900MHz and Wi-Fi 2.4GHz, which are made mainly of sugar, salt and water solutions may be left in the phantoms.

Table 3: Dielectric Performance of Head Tissue Simulating Liquid

Temperature: 23.2°C; Humidity: 64%;			
/	Frequency	Permittivity ϵ	Conductivity σ (S/m)
Target value	835MHz	$41.5 \pm 5\%$	$0.90 \pm 5\%$
Validation value (Sep. 21th, 2015)	835MHz	41.32	0.88
Target value	1900MHz	$40.0 \pm 5\%$	$1.40 \pm 5\%$
Validation value (Sep. 23th, 2015)	1900MHz	39.84	1.39
Target value	2450MHz	$39.2 \pm 5\%$	$1.80 \pm 5\%$
Validation value (Sep. 25th, 2015)	2450MHz	38.96	1.80

Table 4: Dielectric Performance of Body Tissue Simulating Liquid

Temperature: 23.2°C; Humidity: 64%;			
/	Frequency	Permittivity ϵ	Conductivity σ (S/m)
Target value	835MHz	$55.2 \pm 5\%$	$0.97 \pm 5\%$
Validation value (Sep.22th, 2015)	835MHz	54.82	0.95
Target value	1900MHz	$53.3 \pm 5\%$	$1.52 \pm 5\%$
Validation value (Sep. 24th, 2015)	1900MHz	52.87	1.50
Target value	2450MHz	$52.7 \pm 5\%$	$1.95 \pm 5\%$
Validation value (Sep. 25th, 2015)	2450MHz	52.47	1.94

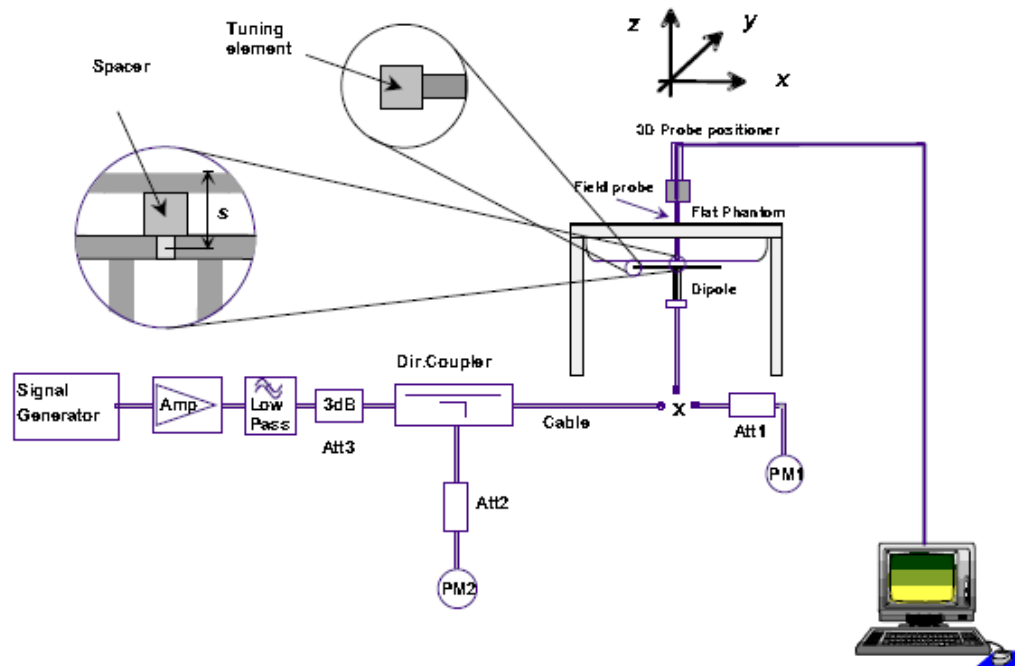


Fig. 1 Configuration of body tissue

6.3 Results of validation testing

Prior to the assessment, the system validation kit was used to test whether the system was operating within its specifications of $\pm 10\%$. The validation results are tabulated below. And also the corresponding SAR plot is attached as well in the SAR plots files.

The following procedure, recommended for performing validation tests using box phantoms is based on the procedures described in the IEEE standard P1528. Setup according to the setup diagram below :



With the SG and Amp and with directional coupler in place, set up the source signal at the relevant frequency and use a power meter to measure the power at the end of the SMA cable that you intend to connect to the balanced dipole. Adjust the SG to make this, say, 0.25W (24 dBm). If this level is too high to read directly with the power meter sensor, insert a calibrated attenuator (e.g. 10 or 20 dB) and make a suitable correction to the power meter reading.

Note 1: In this method, the directional coupler is used for monitoring rather than setting the exact feed power level. If, however, the directional coupler is used for power measurement, you should check the frequency range and power rating of the coupler and measure the coupling factor (referred to output) at the test frequency using a VNA.

Note 2: Remember that the use of a 3dB attenuator (as shown in Figure 8.1 of P1528) means that you need an RF amplifier of 2 times greater power for the same feed power. The other issue is the cable length. You might get up to 1dB of loss per meter of cable, so the cable length after the coupler needs to be quite short.

Note 3: For the validation testing done using CW signals, most power meters are suitable. However, if you are measuring the output of a modulated signal from either a signal generator or a handset, you must ensure that the power meter correctly reads the modulated signals.

The measured 1-gram averaged SAR values of the device against the phantom are provided in Tables 5 and Table 6. The humidity and ambient temperature of test facility were 64% and 23.2°C respectively. The body phantom were full of the body tissue simulating liquid. The EUT was supplied with full-charged battery for each measurement.

The distance between the back of the EUT and the bottom of the flat phantom is 10 mm (taking into account of the IEEE 1528 and the place of the antenna).

Table 5: Head SAR system validation (1g)

Frequency	Duty cycle	Target value (W/kg)	Test value (W/kg)	
			250 mW	1W
835MHz(Sep. 21th, 2015)	1:1	$9.77 \pm 10\%$	2.41	9.64
1900MHz(Sep. 23th, 2015)	1:1	$40.37 \pm 10\%$	9.87	39.48
2450MHz(Sep. 25th, 2015)	1:1	$53.60 \pm 10\%$	13.18	52.72

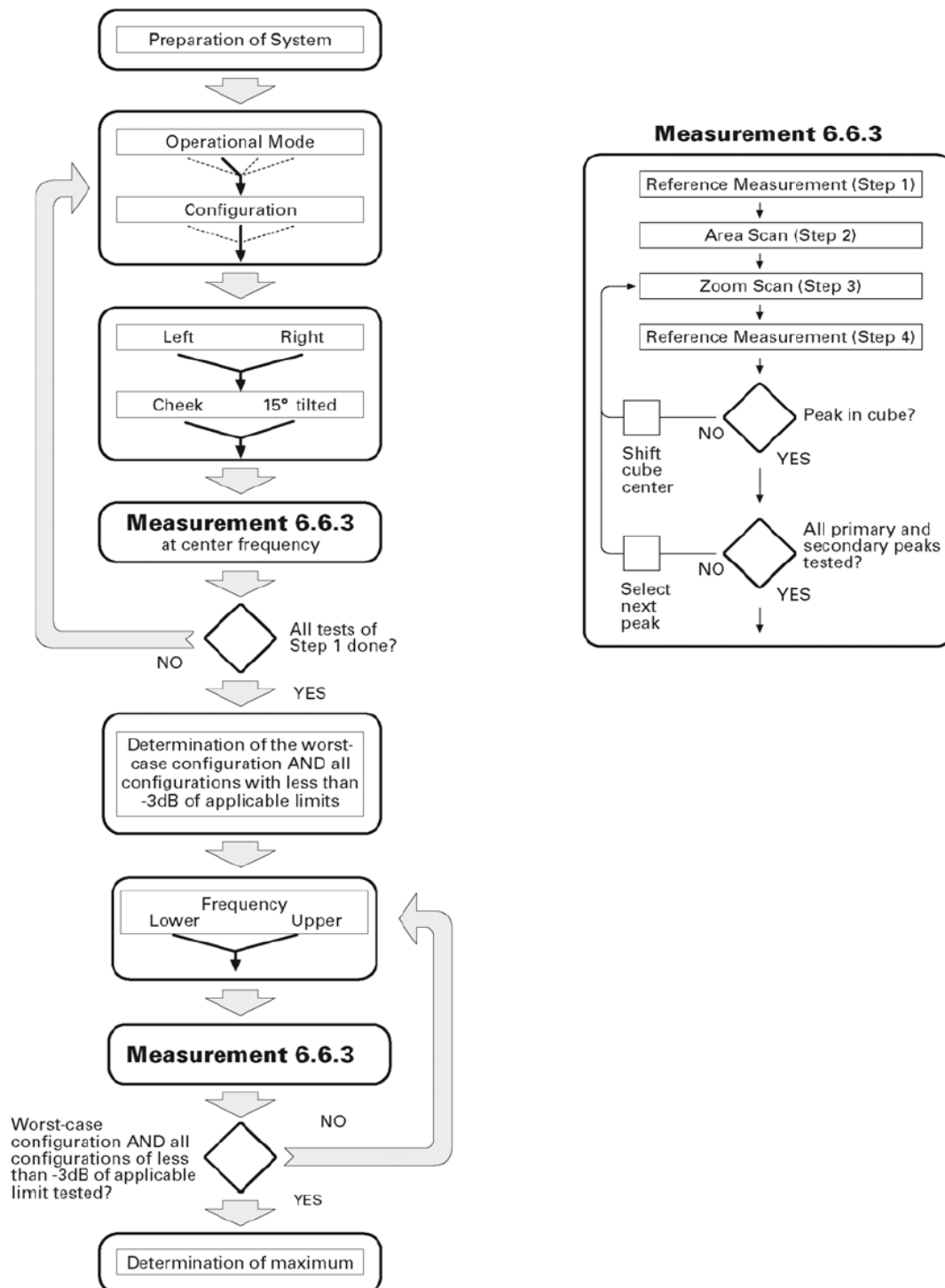
Table 6: Body SAR system validation (1g)

Frequency	Duty cycle	Target value (W/kg)	Test value (W/kg)	
			250 mW	1W
835MHz(Sep. 22th, 2015)	1:1	$10.31 \pm 10\%$	2.54	10.16
1900MHz(Sep. 24th, 2015)	1:1	$40.81 \pm 10\%$	10.13	40.52
2450MHz(Sep. 25th, 2015)	1:1	$52.66 \pm 10\%$	13.07	52.28

* Note: Target value was referring to the measured value in the calibration certificate of reference dipole.
Note: All SAR values are normalized to 1W forward power.

6.4 SAR measurement procedure

The SAR test against the head phantom was carried out as follow:



Establish a call with the maximum output power with a base station simulator, the connection between the EUT and the base station simulator is established via air interface.

After an area scan has been done at a fixed distance of 2mm from the surface of the phantom on the source side, a 3D scan is set up around the location of the maximum spot SAR. First, a point within the scan area is visited by the probe and a SAR reading taken at the start of testing. At the end of testing, the probe is returned to the same point and a

second reading is taken. Comparison between these start and end readings enables the power drift during measurement to be assessed.

Above is the scanning procedure flow chart and table from the IEEE p1528 standard. This is the procedure for which all compliant testing should be carried out to ensure that all variations of the device position and transmission behavior are tested.

For body-worn measurement, the EUT was tested under two position: face upward and back upward.

6.5 Transmitting antenna information

The GSM&WCDMA&BT&GPS antenna inside the EUT is the only transmitting source, and it's a type of PIFA antenna.

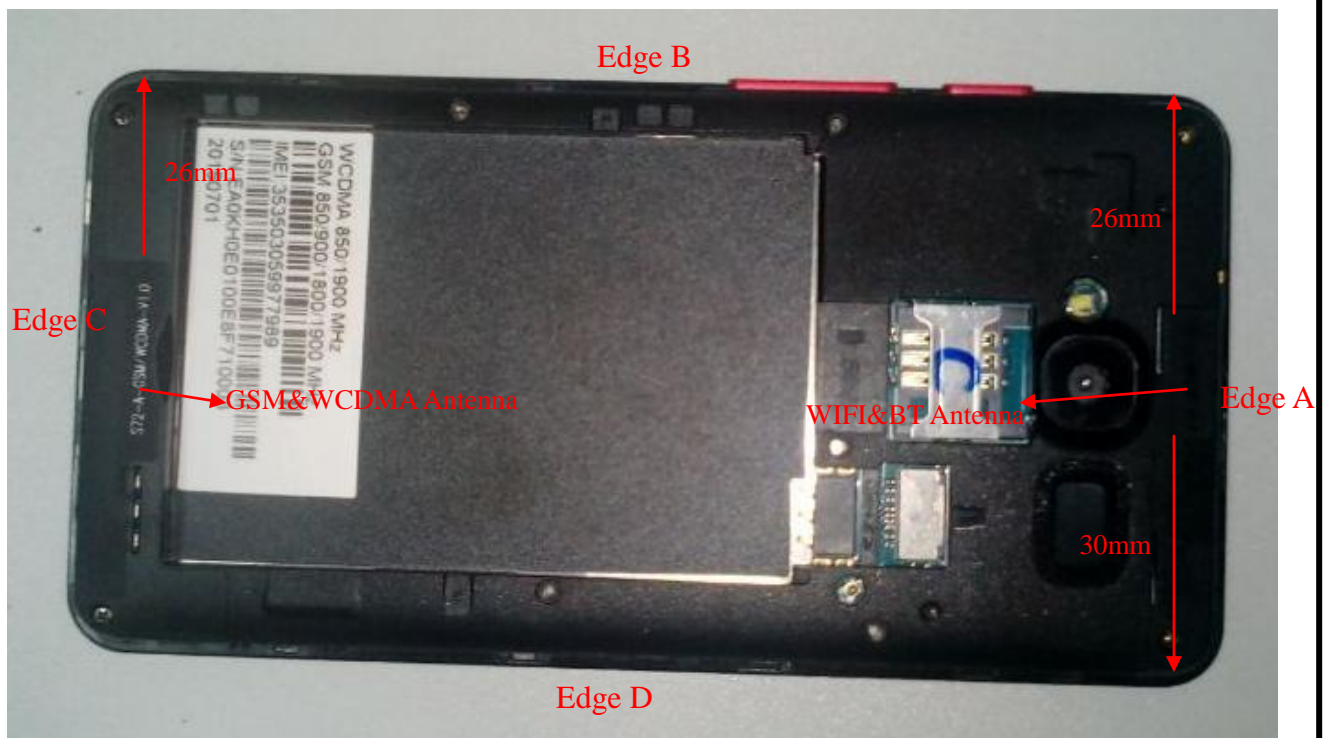


Fig. 3 Position of the antennas



The Body SAR measurement positions of each band are as below:

Antenna	Front	Back	Edge A	Edge B	Edge C	Edge D
2G 3G Antenna Body-worn	Yes	Yes	No	No	No	No
2G 3G Antenna hotspot	Yes	Yes	No	No	Yes	Yes
WIFI Antenna Body-worn	Yes	Yes	No	No	No	No
WIFI Antenna hotspot	Yes	Yes	Yes	No	No	Yes

Note: According to KDB941225 antenna-to-edge>2.5cm, SAR is not required.

7 CHARACTERISTICS OF THE TEST

7.1 Applicable Limit Regulations

47CFR § 2.1093- Radiofrequency Radiation Exposure Evaluation: Portable Devices;

ANSI C95.1–1992: Safety Levels with Respect to Human Exposure to Radio Frequency Electromagnetic Fields, 3 kHz – 300 GHz.(IEEE Std C95.1-1991)

IEEE 1528–2013: IEEE Recommended Practice for Determining the Peak Spatial-Average Specific Absorption Rate (SAR) in the Human Body Due to Wireless Communications Devices: Experimental Techniques;

It specifies the maximum exposure limit of **1.6 W/kg** as averaged over any 1 gram of tissue for portable devices being used within 20 cm of the user in the uncontrolled environment.

7.2 Applicable Measurement Standards

The Specific Absorption Rate (SAR) testing specification, method, and procedure for this is in accordance with the following standards:

FCC 47 CFR Part2 (2.1093)

ANSI/IEEE C95.1-1992

IEEE 1528-2013

FCC KDB 248227 D01 802.11 Wi-Fi SAR v02r01

FCC KDB 447498 D01 v05r02 General RF Exposure Guidance

FCC KDB 648474 D04 v01r02 Handset SAR

FCC KDB 865664 D01 v01r03 SAR Measurement 100MHz to 6GHz

FCC KDB 865664 D02 v01r01 SAR Exposure Reporting

FCC KDB 941225 D01 v03 3G SAR Procedures

FCC KDB 941225 D06 v02 Hotspot Mode

8 LABORATORY ENVIRONMENT

Table 9: The Ambient Conditions during SAR Test

Temperature	Min. = 22 ° C, Max. = 25 ° C
Atmospheric pressure	Min.=86 kPa, Max.=106 kPa
Relative humidity	Min. = 45%, Max. = 75%
Ground system resistance	< 0.5 Ω
Ambient noise is checked and found very low and in compliance with requirement of standards. Reflection of surrounding objects is minimized and in compliance with requirement of standards.	

9. Conducted RF Output Power

9.1 GSM Conducted Power

Table 10: GSM Conducted Power

Band		Burst Average Power (dBm)			Frame-Average Power (dBm)		
GSM850	TX Channel	128	190	251	128	190	251
	Frequency(MHz)	824.2	836.4	848.8	824.2	836.4	848.8
	GSM	32.54	32.46	32.57	23.51	23.43	23.54
	GPRS (Slot 1)	32.37	32.40	32.35	23.34	23.37	23.32
	GPRS (Slot 2)	29.75	29.71	29.63	23.73	23.69	23.61
	GPRS (Slot 3)	27.65	27.68	27.61	23.39	23.42	23.35
	GPRS (Slot 4)	25.97	25.92	25.88	22.96	22.91	22.87
	EDGE (Slot 1)	31.86	31.91	31.74	22.83	22.88	22.71
	EDGE (Slot 2)	28.82	28.79	28.80	22.8	22.77	22.78
	EDGE (Slot 3)	26.78	26.72	26.68	22.52	22.46	22.42
	EDGE (Slot 4)	24.86	24.81	24.79	21.85	21.8	21.78
GSM1900	TX Channel	512	661	810	512	661	810
	Frequency(MHz)	1850.2	1880	1909.8	1850.2	1880	1909.8
	GSM	29.10	29.08	28.98	20.07	20.05	19.95
	GPRS (Slot 1)	28.87	28.91	28.80	19.84	19.88	19.77
	GPRS (Slot 2)	27.11	27.05	27.07	21.09	21.03	21.05
	GPRS (Slot 3)	25.98	25.92	25.89	21.72	21.66	21.63
	GPRS (Slot 4)	24.04	24.11	24.02	21.03	21.1	21.01
	EDGE (Slot 1)	28.57	28.62	28.53	19.54	19.59	19.5

	EDGE (Slot 2)	26.91	26.89	26.95	20.89	20.87	20.93
	EDGE (Slot 3)	25.32	25.35	25.26	21.06	21.09	21
	EDGE (Slot 4)	23.82	23.71	23.75	20.81	20.7	20.74

Note: Per KDB 447498 D01 v05r02, the maximum output power channel is used for SAR testing and for further SAR test reduction.

For Head SAR testing, GSM should be evaluated, therefore the EUT was set in GSM Voice for GSM850 and GSM1900 due to its highest frame-average power.

For Body worn SAR testing, GSM should be evaluated, therefore the EUT was set in GSM Voice for GSM850 and GSM 1900 due to its highest frame-average power.

For hotspot mode SAR testing, GPRS and EDGE should be evaluated, therefore the EUT was set in GPRS850 (2Tx slots) and GPRS1900 (3Tx slots) due to its highest frame-average power.

Table 11: Timeslot consignations

No. Of Slots	Slot 1	Slot 2	Slot 3	Slot 4
Slot Consignation	1Up4Down	2Up3Down	3Up2Down	4Up1Down
Duty Cycle	1:8	1:4	1:2.67	1:2
Crest Factor	-9.03dB	-6.02dB	-4.26dB	-3.01dB

9.2 WCDMA Conducted peak output Power

Table 12: WCDMA conducted peak output power

Item	band	WCDMA 850			WCDMA 1900		
	ARFCN	4132	4183	4233	9262	9400	9538
	subtest	dBm			dBm		
RMC 12.2kbps	non	23.25	23.36	23.34	23.15	23.07	23.23
HSDPA	1	22.65	22.51	22.61	22.58	22.51	22.46
	2	22.42	22.45	22.35	22.49	22.53	22.47
	3	22.48	22.37	22.46	22.36	22.47	22.32
	4	22.11	22.17	22.09	22.17	22.09	22.08
HSUPA	1	22.19	22.16	22.15	22.17	22.23	22.15
	2	22.31	22.37	22.24	22.24	22.31	22.28
	3	21.81	21.75	21.83	21.85	21.87	21.91
	4	22.16	22.12	22.23	22.18	22.24	22.20
	5	21.91	22.04	21.93	22.01	21.94	21.08
Note:	The Conducted RF Output Power test of WCDMA /HSDPA /HSUPA were tested by power meter.						

HSUPA Setup Configuration:

- The EUT was connected to Base Station Agilent E5515C referred to the Setup Configuration.
- The RF path losses were compensated into the measurements.
- A call was established between EUT and Base Station with following setting *:
 - Call Configs = 5.2B, 5.9B, 5.10B, and 5.13.2B with QPSK
 - Set the Gain Factors (β_c and β_d) and parameters (AG Index) were set according to each specific sub-test in the following table, C11.1.3, quoted from the TS 34.121
 - Set Cell Power = -86 dBm
 - Set Channel Type = 12.2k + HSPA
 - Set UE Target Power
 - Power Ctrl Mode= Alternating bits
 - Set and observe the E-TFCI
 - Confirm that E-TFCI is equal to the target E-TFCI of 75 for sub-test 1, and other subtest's E-TFCI
- The transmitted maximum output power was recorded.

Table C.11.1.3: β values for transmitter characteristics tests with HS-DPCCH and E-DCH

Sub-test	β_c	β_d	β_d (SF)	β_c/β_d	β_{HS} (Note 1)	β_{EC}	β_{ED} (Note 5) (Note 6)	β_{ED} (SF)	β_{ED} (Codes)	CM (dB) (Note 2)	MPR (dB) (Note 2)	AG Index (Note 6)	E-TFCI
1	11/15 (Note 3)	15/15 (Note 3)	64	11/15 (Note 3)	22/15	209/25	1309/225	4	1	1.0	0.0	20	75
2	6/15	15/15	64	6/15	12/15	12/15	94/75	4	1	3.0	2.0	12	67
3	15/15	9/15	64	15/9	30/15	30/15	β_{ED1} : 47/15 β_{ED2} : 47/15	4	2	2.0	1.0	15	92
4	2/15	15/15	64	2/15	4/15	2/15	56/75	4	1	3.0	2.0	17	71
5	15/15 (Note 4)	15/15 (Note 4)	64	15/15 (Note 4)	30/15	24/15	134/15	4	1	1.0	0.0	21	81

Note 1: Δ_{ACK} , Δ_{NACK} and $\Delta_{CQI} = 30/15$ with $\beta_{HS} = 30/15 * \beta_c$.

Note 2: CM = 1 for $\beta_c/\beta_d=12/15$, $\beta_{HS}/\beta_c=24/15$. For all other combinations of DPDCCH, DPCCH, HS-DPCCH, E-DPCCH and E-DPCCH the MPR is based on the relative CM difference.

Note 3: For subtest 1 the β_c/β_d ratio of 11/15 for the TFC during the measurement period (TF1, TF0) is achieved by setting the signalled gain factors for the reference TFC (TF1, TF1) to $\beta_c = 10/15$ and $\beta_d = 15/15$.

Note 4: For subtest 5 the β_c/β_d ratio of 15/15 for the TFC during the measurement period (TF1, TF0) is achieved by setting the signalled gain factors for the reference TFC (TF1, TF1) to $\beta_c = 14/15$ and $\beta_d = 15/15$.

Note 5: In case of testing by UE using E-DPCCH Physical Layer category 1, Sub-test 3 is omitted according to TS25.306 Table 5.1g.

Note 6: β_{ED} can not be set directly, it is set by Absolute Grant Value.

Setup Configuration

HSDPA Setup Configuration:

- The EUT was connected to Base Station Agilent E5515C referred to the Setup Configuration.
- The RF path losses were compensated into the measurements.
- A call was established between EUT and Base Station with following setting:
 - Set Gain Factors (β_c and β_d) and parameters were set according to each
 - Specific sub-test in the following table, C10.1.4, quoted from the TS 34.121
 - Set RMC 12.2Kbps + HSDPA mode.
 - Set Cell Power = -86 dBm
 - Set HS-DSCH Configuration Type to FRC (H-set 1, QPSK)
 - Select HSDPA Uplink Parameters
 - Set Delta ACK, Delta NACK and Delta CQI = 8
 - Set Ack-Nack Repetition Factor to 3
 - Set CQI Feedback Cycle (k) to 4 ms
 - Set CQI Repetition Factor to 2
 - Power Ctrl Mode = All Up bits
- The transmitted maximum output power was recorded.

Table C.10.1.4: β values for transmitter characteristics tests with HS-DPCCH

Sub-test	β_c	β_d	β_d (SF)	β_c/β_d	β_{hs} (Note 1, Note 2)	CM (dB) (Note 3)	MPR (dB) (Note 3)
1	2/15	15/15	64	2/15	4/15	0.0	0.0
2	12/15 (Note 4)	15/15 (Note 4)	64	12/15 (Note 4)	24/15	1.0	0.0
3	15/15	8/15	64	15/8	30/15	1.5	0.5
4	15/15	4/15	64	15/4	30/15	1.5	0.5

Note 1: Δ_{ACK} , Δ_{NACK} and $\Delta_{CQI} = 30/15$ with $\beta_{hs} = 30/15 \cdot \beta_c$.

Note 2: For the HS-DPCCH power mask requirement test in clause 5.2C, 5.7A, and the Error Vector Magnitude (EVM) with HS-DPCCH test in clause 5.13.1A, and HSDPA EVM with phase discontinuity in clause 5.13.1AA, Δ_{ACK} and $\Delta_{NACK} = 30/15$ with $\beta_{hs} = 30/15 \cdot \beta_c$, and $\Delta_{CQI} = 24/15$ with $\beta_{hs} = 24/15 \cdot \beta_c$.

Note 3: CM = 1 for $\beta_c/\beta_d = 12/15$, $\beta_{hs}/\beta_c = 24/15$. For all other combinations of DPDCH, DPCCH and HS-DPCCH the MPR is based on the relative CM difference. This is applicable for only UEs that support HSDPA in release 6 and later releases.

Note 4: For subtest 2 the β_c/β_d ratio of 12/15 for the TFC during the measurement period (TF1, TF0) is achieved by setting the signalled gain factors for the reference TFC (TF1, TF1) to $\beta_c = 11/15$ and $\beta_d = 15/15$.

Note:

- WCDMA SAR was tested under PMC 12.2kbps with HSPA Inactive per KDB Publication 941225 D01.HSPA SAR was not requires since the average output power of the HSPA subtests was not more than 0.25dB higher than the RMC level and SAR was less than 1.2W/kg.
- It is expected by the manufacturer that MPR for some HSPA subtests may be up to 2dB more than specified by 3GPP, but also as low as 0dB according to the chipset implementation in this model.

WLAN 2.4GHz Band Conducted Power

For the 802.11b/g SAR tests, a communication link is set up with the test mode software for WiFi mode test. The Absolute Radio Frequency Channel Number(ARFCN) is allocated to 1 ,6 and 11 respectively in the case of 2450 MHz.During the test,at the each test frequency channel, the EUT is operated at the RF continuous emission mode. Each channel should be tested at the lowest data rate.

802.11b/g operating modes are tested independently according to the service requirements in each frequency band. 802.11b/g modes are tested on channel 1, 6, 11; however,if output power reduction is necessary for channels 1 and/or 11 to meet restricted band requirements the highest output channel closest to each of these channels must be tested instead.

SAR is not required for 802.11g/n channels when the maximum average output power is less than 0.25dB higher than that measured on the corresponding 802.11b channels.

Wi-Fi 2450MHz	Channel/F req.(MHz)	Average Power (dBm) for Data Rates (Mbps)							
		1	2	5.5	11	/	/	/	/
802.11b	1(2412)	16.60	16.54	16.49	16.52	/	/	/	/
	6(2437)	16.88	16.75	16.82	15.82	/	/	/	/
	11(2462)	16.80	16.75	16.69	16.70	/	/	/	/

802.11g	Channel	6	9	12	18	24	36	48	54
	1(2412)	15.49	15.42	15.40	15.45	15.46	15.38	15.42	15.44
	6(2437)	15.54	15.49	15.50	15.45	15.53	15.47	15.50	15.48
	11(2462)	15.91	15.84	15.71	15.79	15.86	15.77	15.88	15.82
802.11n (HT20)	Channel	MCS0	MCS1	MCS2	MCS3	MCS4	MCS5	MCS6	MCS7
	1(2412)	15.40	15.32	15.35	15.29	15.33	15.37	15.32	15.36
	6(2437)	15.72	15.67	15.70	15.62	15.59	15.65	15.61	15.68
	11(2462)	15.77	15.67	15.72	15.69	15.75	15.62	15.71	15.69
802.11n (HT40)	Channel	MCS0	MCS1	MCS2	MCS3	MCS4	MCS5	MCS6	MCS7
	3(2422)	14.62	14.58	14.60	14.55	14.58	14.57	14.52	14.50
	6(2437)	14.82	14.68	14.72	14.78	14.80	14.76	14.74	14.80
	9(2452)	15.25	15.15	15.20	15.18	15.22	15.19	15.23	15.18

Note:

1. Per KDB 248227 D01 v02r01, choose the highest output power channel to test SAR and determine further SAR exclusion
2. For each frequency band, testing at higher data rates and higher order modulations is not required when the maximum average output power for each of these configurations is less than 1/4dB higher than those measured at lowest data rate
3. Per KDB 248227 D01 v02r01, 802.11g /11n-HT20/11n-HT40 is not required. . When the highest reported SAR for DSSS is adjusted by the ratio of OFDM to DSSS specified maximum output power and the adjusted SAR is $\leq 1.2\text{W/Kg}$. Thus the SAR can be excluded.

Bluetooth Conducted Power

Channel	Frequency (MHz)	BT3.0 Output Power(dBm)		
		GFSK	$\pi/4$ -DQPSK	8-DPSK
CH 0	2402	1.22	0.46	0.45
CH 39	2441	1.43	0.68	0.71
CH 78	2480	1.17	0.62	0.61
Channel	Frequency (MHz)	BT3.0 Output Power(dBm)		
		GFSK		
CH 0	2402	-6.17		
CH 39	2441	-6.39		
CH 78	2480	-5.53		

Note:

1. Per KDB 447498 D01v05r02, the 1-g and 10-g SAR test exclusion thresholds for 100MHz to 6GHz at test

separation distances $\leq 50\text{mm}$ are determined by: $[(\text{max. power of channel, including tune-up tolerance, mW})/(\text{min. test separation distance, mm})] \cdot [\sqrt{f} \text{ (GHz)}] \leq 3.0$ for 1-g SAR and ≤ 7.5 for 10-g extremity SAR

(1) $f(\text{GHz})$ is the RF channel transmit frequency in GHz

(2) Power and distance are round to the nearest mW and mm before calculation

(3) The result is rounded to one decimal place for comparison

(4) If the test separation distance(antenna-user) is $< 5\text{mm}$, 5mm is used for excluded SAR calculation

Bluetooth Max Power (dBm)	mW	Test Distance (mm)	Frequency(GHz)	Exclusion Thresholds
2	1.585	5	2.4	0.491

Per KDB 447498 D01v05r02 exclusion thresholds is $0.491 < 3$, RF exposure evaluation is not required.
BT estimated SAR value=Exclusion Thresholds/7.5= $0.491/7.5=0.065\text{W/Kg}$

Bluetooth Max Power (dBm)	mW	Test Distance (mm)	Frequency(GHz)	Exclusion Thresholds
2	1.585	10	2.4	0.347

Per KDB 447498 D01v05r02 exclusion thresholds is $0.246 < 3$, RF exposure evaluation is not required.
BT estimated SAR value=Exclusion Thresholds/7.5= $0.246/7.5=0.033\text{W/Kg}$

The estimated SAR value is used for simultaneous transmission analysis.

General Note:

- Per KDB 447498 D01v05r02, the reported SAR is the measured SAR value adjusted for maximum tune-up tolerance.
- Per KDB447498 D01v05r02, testing of other required channels within the operating mode of a frequency band is not required when the reported 1-g or 10-g SAR for the mid-band or highest output power channel is: $\leq 0.8 \text{ W/kg}$ or 2.0 W/kg , for 1-g or 10-g respectively, when the transmission band is $\leq 100 \text{ MHz}$. When the maximum output power variation across the required test channels is $> \frac{1}{2} \text{ dB}$, instead of the middle channel, the highest output power channel must be used.
- Per KDB941225 D06v02, the DUT Dimension is bigger than $9 \text{ cm} \times 5 \text{ cm}$, so 10mm is chosen as the test separation distance for Hotspot mode. When the antenna-to-edge distance is greater than 2.5cm, such position does not need to be tested. As the manufacture required, the separation distance use 5mm for Hotspot mode.
- Per KDB 865664 D01v01r03,for each frequency band,repeated SAR measurement is required only when the measured SAR is $\geq 0.8\text{W/Kg}$; if the deviation among the repeated measurement is $\leq 20\%$,and the measured SAR $< 1.45\text{W/Kg}$,only one repeated measurement is required.
- Per KDB865664 D02v01r01, SAR plot is only required for the highest measured SAR in each exposure configuration, wireless mode and frequency band combination; Plots are also required when the measured SAR is $> 1.5 \text{ W/kg}$, or $> 7.0 \text{ W/kg}$ for occupational exposure. The published RF exposure KDB procedures may require additional plots; for example, to support SAR to peak location separation ratio test exclusion and/or volume scan post-processing(Refer to appendix D for details).

6. Per KDB941225 D01v03, when multiple slots can be used, the GPRS/EDGE slot configuration with the highest frame-averaged output power was selected for SAR testing.
7. Per KDB941225 D01v03, when the maximum output power and tune-up tolerance specified for production units in a secondary mode is $\leq \frac{1}{4}$ dB higher than the primary mode or when the highest reported SAR of the primary mode is scaled by the ratio of specified maximum output power and tune-up tolerance of secondary to primary mode and the adjusted SAR is ≤ 1.2 W/kg, SAR measurement is not required for the secondary mode.
8. Per KDB 248227 D01 v02r01, 802.11g /11n-HT20/11n-HT40 is not required. When the highest reported SAR for DSSS is adjusted by the ratio of OFDM to DSSS specified maximum output power and the adjusted SAR is ≤ 1.2 W/Kg. Thus the SAR can be excluded.

9.3. Scaling Factor calculation

Operation Mode	Channel	Output Power(dBm)	Tune up Power in tolerance(dBm)	Scaling Factor
GSM 850	128	32.54	32.5 ± 0.5	1.112
	190	32.46	32.5 ± 0.5	1.132
	251	32.57	32.5 ± 0.5	1.104
GPRS 850(2Tx)	128	29.75	29.5 ± 0.5	1.059
	190	29.71	29.5 ± 0.5	1.069
	251	29.63	29.5 ± 0.5	1.089
GSM1900	512	29.10	29.0 ± 0.5	1.096
	661	29.08	29.0 ± 0.5	1.102
	810	28.98	29.0 ± 0.5	1.127
GPRS1900(3Tx)	512	25.98	26.0 ± 0.5	1.127
	661	25.92	26.0 ± 0.5	1.143
	810	25.89	26.0 ± 0.5	1.151
WCDMA850	4132	23.25	23.0 ± 0.5	1.059
	4183	23.36	23.0 ± 0.5	1.033
	4233	23.34	23.0 ± 0.5	1.038
WCDMA1900	9262	23.15	23.0 ± 0.5	1.084
	9400	23.07	23.0 ± 0.5	1.104
	9538	23.23	23.0 ± 0.5	1.064
WIFI 802.11b	1	16.60	16.5 ± 0.5	1.096
	6	16.88	16.5 ± 0.5	1.028
	11	16.80	16.5 ± 0.5	1.047
BT	39	1.43	1.0 ± 1.0	1.140

Simultaneous SAR

No.	Transmitter Combinations	Scenario Supported or not	Supported for Mobile Hotspot or not
1	GSM(Voice)+GSM(Data)	No	No
2	WCDMA(Voice)+WCDMA(Data)	Yes	No
3	GSM(Voice)+ WCDMA(Data)	No	No
4	WCDMA(Voice)+GSM(Data)	No	No
5	GSM(Voice)+ WCDMA(Voice)	No	No
6	GSM(Voice)+Wifi	Yes	No
7	WCDMA(Voice) +Wifi	Yes	No
8	GSM(Voice)+ BT	Yes	No
9	WCDMA(Voice) + BT	Yes	No
10	GSM(Data)+wifi	Yes	Yes
11	WCDMA(Data) +wifi	Yes	Yes

10 TEST RESULTS

10.1 Summary of SAR Measurement Results

Table 7: SAR Values of GSM 850MHz Band

Temperature: 23.0~23.5°C, humidity: 62~64%.					
Test Positions		Channel /Frequency (MHz)	SAR(W/Kg), 1.6 (1g average)		Plot No.
			SAR(W/Kg), 1g	Scaled SAR(W/Kg),1g	
Right Side of Head	Cheek	251/848.8	0.165	0.182	-
	Tilt 15 degrees	251/848.8	0.125	0.138	-
Left Side of Head	Cheek	251/848.8	0.179	0.198	1
	Tilt 15 degrees	251/848.8	0.130	0.144	-
Body-worn (10mm Separation)	GSM	Face Upward	0.229	0.253	-
		Back Upward	0.321	0.354	2
Hotspot (10mm Separation)	GPRS (2Tx)	Face Upward	0.179	0.190	-
		Back Upward	0.254	0.269	3
		Edge C	0.060	0.064	-
		Edge D	0.134	0.142	-

Table 8: SAR Values of GSM1900 MHz Band

Temperature: 23.0~23.5°C, humidity: 62~64%.					
Test Positions		Channel /Frequency (MHz)	SAR(W/Kg), 1.6 (1g average)		Plot No.
			SAR(W/Kg), 1g	Scaled SAR(W/Kg),1g	
Right Side of Head	Cheek	512/1850.2	0.119	0.130	-
	Tilt 15 degrees	512/1850.2	0.051	0.056	-
Left Side of Head	Cheek	512/1850.2	0.123	0.135	4
	Tilt 15 degrees	512/1850.2	0.063	0.069	-
Body-worn (10mm Separation)	GSM	Face Upward	0.458	0.502	-
		Back Upward	0.900	0.986	5
		512/1850.2 Repeat	0.881	0.966	-
		661/1880.0	0.847	0.928	-
		810/1909.8	0.875	0.959	-
Hotspot (10mm Separation)	GPRS (3Tx)	Face Upward	0.311	0.350	-
		Back Upward	0.640	0.721	-
		Edge C	0.799	0.900	6
		661/1880.0	0.738	0.832	-
		810/1909.8	0.764	0.861	-
		Edge D	0.045	0.051	-

Table 9: SAR Values of WCDMA850

Temperature: 23.0~23.5°C, humidity: 62~64%.					
Test Positions		Channel /Frequency (MHz)	SAR(W/Kg), 1.6 (1g average)		Plot No.
			SAR(W/Kg) ,1g	Scaled SAR(W/Kg),1g	
Right Side of Head	Cheek	4183/836.6	0.150	0.155	-
	Tilt 15 degrees	4183/836.6	0.139	0.144	-
Left Side of Head	Cheek	4183/836.6	0.176	0.182	7
	Tilt 15 degrees	4183/836.6	0.144	0.149	-
Body-worn (10mm Separation)	Face Upward	4183/836.6	0.259	0.268	-
	Back Upward	4183/836.6	0.350	0.362	8
Hotspot (10mm Separation)	Face Upward	4183/836.6	0.259	0.268	-
	Back Upward	4183/836.6	0.350	0.362	-
	Edge C	4183/836.6	0.104	0.107	-
	Edge D	4183/836.6	0.174	0.180	-

Table 10: SAR Values of WCDMA1900

Temperature: 23.0~23.5°C, humidity: 62~64%.					
Test Positions		Channel /Frequency (MHz)	SAR(W/Kg), 1.6 (1g average)		Plot No.
			SAR(W/Kg)1g Peak)	Scaled SAR(W/Kg),1g	
Right Side of Head	Cheek	9538/1907.6	0.212	0.226	-
	Tilt 15 degrees	9538/1907.6	0.075	0.080	-
Left Side of Head	Cheek	9538/1907.6	0.318	0.338	9
	Tilt 15 degrees	9538/1907.6	0.207	0.220	-
Body-worn (10mm Separation)	Face Upward	9538/1907.6	0.386	0.411	-
	Back Upward	9538/1907.6	0.631	0.671	-
Hotspot (10mm Separation)	Face Upward	9538/1907.6	0.386	0.411	-
	Back Upward	9538/1907.6	0.631	0.671	-
	Edge C	9262/1852.4	0.982	1.064	-
		9400/1880.0	0.964	1.064	-
		9538/1907.6	1.018	1.083	10
		9538/1907.6Repeat	1.018	1.083	-
	Edge D	9538/1907.6	0.144	0.153	-

Table 11: SAR Values of Wi-Fi 802.11b

Temperature: 23.0~23.5°C, humidity: 62~64%.					
Test Positions		Channel /Frequency (MHz)	SAR(W/Kg), 1.6 (1g average)		Plot No.
			SAR(W/Kg)1g Peak	Scaled SAR(W/Kg),1g	
Right Side of Head	Cheek	6/2437	0.545	0.560	-
	Tilt 15 degrees	1/2412	0.985	1.080	-
		6/2437	1.108	1.139	11
		6/2437 Repeat	1.096	1.127	-
		11/2462	1.032	1.081	-
Left Side of Head	Cheek	6/2437	0.519	0.534	-
	Tilt 15 degrees	1/2412	0.981	1.075	-
		6/2437	1.010	1.038	-
		6/2437 Repeat	0.993	1.021	-
		11/2462	0.964	1.009	-
Body-worn (10mm Separation)	Face Upward	6/2437	0.170	0.175	-
	Back Upward	6/2437	0.237	0.244	-
Hotspot (10mm Separation)	Face Upward	6/2437	0.170	0.175	-
	Back Upward	6/2437	0.237	0.244	-
	Edge A	6/2437	0.373	0.383	12

Note: When the 1-g SAR for the mid-band channel or the channel with the Highest output power satisfy the following conditions, testing of the other channels in the band is not required.(Per KDB 447498 D01 General RF Exposure Guidance v05r02)

- ≤ 0.8 W/kg, when the transmission band is ≤ 100 MHz
- ≤ 0.6 W/kg, when the transmission band is between 100 MHz and 200 MHz
- ≤ 0.4 W/kg, when the transmission band is ≥ 200 MHz

10.2 Conclusion

Localized Specific Absorption Rate (SAR) of this portable wireless device has been measured in all cases requested by the relevant standards cited in Clause 6 of this report. Maximum localized SAR is **below** exposure limits specified in the relevant standards.

SIMULTANEOUS TRANSMISSION ANALYSIS

Test Position		Right Cheek	Right Title	Left Cheek	Left Tilt
Head MAX 1-g SAR(W/Kg)	GSM850	0.182	0.138	0.198	0.144
	GSM1900	0.130	0.056	0.135	0.069
	WCDMA850	0.155	0.144	0.182	0.149
	WCDMA1900	0.226	0.080	0.338	0.220
	WIFI 802.11b	0.560	1.139	0.534	1.038
	BT	*0.065	*0.065	*0.065	*0.065
BT Simultaneous Σ 1-g SAR(W/Kg)		0.291	0.209	0.413	0.285
WiFi Simultaneous Σ 1-g SAR(W/Kg)		0.786	1.283	0.872	1.258

Simultaneous Tx Combination of GSM/WCDMA and BT/WIFI (Head).

Test Position		Face	Back	Edge A	Edge B	Edge C	Edge D
Body-worn 10mm separation MAX 1-g SAR(W/Kg)	GSMS850	0.253	0.354	--	--	--	--
	GSM1900	0.502	0.986	--	--	--	--
	WCDMA850	0.268	0.362	--	--	--	--
	WCDMA1900	0.411	0.671	--	--	--	--
	WIFI 802.11b	0.175	0.244	--	--	--	--
	BT	*0.033	*0.033	--	--	--	--
BT Simultaneous Σ 1-g SAR(W/Kg)		0.535	1.019	--	--	--	--
WiFi Simultaneous Σ 1-g SAR(W/Kg)		0.677	1.230	--	--	--	--

Simultaneous Tx Combination of GSM/WCDMA and BT/WIFI (Body).

Test Position		Face	Back	Edge A	Edge B	Edge C	Edge D
Hotspot 10mm separation MAX 1-g SAR(W/Kg)	GPRS850	0.190	0.269	--	--	0.064	0.142
	GPRS1900	0.350	0.721	--	--	0.900	0.051
	WCDMA 850	0.268	0.362	--	--	0.107	0.180
	WCDMA 1900	0.411	0.671	--	--	1.083	0.153
	WIFI 802.11b	0.175	0.244	0.383	--	--	--
	BT	*0.033	*0.033	*0.033	--	--	--
BT Simultaneous Σ 1-g SAR(W/Kg)		0.444	0.754	0.033	--	1.083	0.180
WiFi Simultaneous Σ 1-g SAR(W/Kg)		0.586	0.965	0.383	--	1.083	0.180

Simultaneous Tx Combination of GSM/WCDMA and WIFI (Body).

The estimated SAR value with * Signal

SAR to Peak Location Separation Ratio (SPLSR)

As the Sum of the SAR is not greater than 1.6 W/kg SPLSR assessment is not required

11 Measurement Uncertainty

No.	Uncertainty Component	Type	Uncertainty Value (%)	Probability Distribution	k	ci	Standard Uncertainty (%) $u_i(\%)$	Degree of freedom v_{eff} or v_i
Measurement System								
1	—Probe Calibration	B	5.8	N	1	1	5.8	∞
2	—Axial isotropy	B	3.5	R	$\sqrt{3}$	0.5	1.43	∞
3	—Hemispherical Isotropy	B	5.9	R	$\sqrt{3}$	0.5	2.41	∞
4	—Boundary Effect	B	1	R	$\sqrt{3}$	1	0.58	∞
5	—Linearity	B	4.7	R	$\sqrt{3}$	1	2.71	∞
6	—System Detection Limits	B	1.0	R	$\sqrt{3}$	1	0.58	∞
7	Modulation response	B	3	N	1	1	3.00	
8	—Readout Electronics	B	0.5	N	1	1	0.50	∞
9	—Response Time	B	1.4	R	$\sqrt{3}$	1	0.81	∞
10	—Integration Time	B	3.0	R	$\sqrt{3}$	1	1.73	∞
11	—RF Ambient Conditions	B	3.0	R	$\sqrt{3}$	1	1.73	∞
12	—Probe Position Mechanical tolerance	B	1.4	R	$\sqrt{3}$	1	0.81	∞
13	—Probe Position with respect to Phantom Shell	B	1.4	R	$\sqrt{3}$	1	0.81	∞
14	—Extrapolation, Interpolation and Integration Algorithms for Max. SAR evaluation	B	2.3	R	$\sqrt{3}$	1	1.33	∞
Uncertainties of the DUT								
15	—Position of the DUT	A	2.6	N	$\sqrt{3}$	1	2.6	5
16	—Holder of the DUT	A	3	N	$\sqrt{3}$	1	3.0	5

17	–Output Power Variation –SAR drift measurement	B	5.0	R	$\sqrt{3}$	1	2.89	∞
Phantom and Tissue Parameters								
18	– Phantom Uncertainty(shape and thickness tolerances)	B	4	R	$\sqrt{3}$	1	2.31	∞
19	Uncertainty in SAR correction for deviation(in permittivity and conductivity)	B	2	N	1	1	2.00	
20	–Liquid Conductivity Target –tolerance	B	2.5	R	$\sqrt{3}$	0.6	1.95	∞
21	–Liquid Conductivity –measurement Uncertainty)	B	4	N	$\sqrt{3}$	1	0.92	9
22	–Liquid Permittivity Target tolerance	B	2.5	R	$\sqrt{3}$	0.6	1.95	∞
23	–Liquid Permittivity –measurement uncertainty	B	5	N	$\sqrt{3}$	1	1.15	∞
Combined Standard Uncertainty				RSS			10.63	
Expanded uncertainty (Confidence interval of 95 %)				K=2			21.26	

System Check Uncertainty

No.	Uncertainty Component	Type	Uncertainty Value (%)	Probability Distribution	k	ci	Standard Uncertainty (%) $u_i(\%)$	Degree of freedom V_{eff} or v_i
Measurement System								
1	–Probe Calibration	B	5.8	N	1	1	5.8	∞
2	–Axial isotropy	B	3.5	R	$\sqrt{3}$	0.5	1.43	∞
3	–Hemispherical Isotropy	B	5.9	R	$\sqrt{3}$	0.5	2.41	∞
4	–Boundary Effect	B	1	R	$\sqrt{3}$	1	0.58	∞
5	–Linearity	B	4.7	R	$\sqrt{3}$	1	2.71	∞
6	–System Detection Limits	B	1	R	$\sqrt{3}$	1	0.58	∞
7	Modulation response	B	0	N	1	1	0.00	

8	— Readout Electronics	B	0.5	N	1	1	0.50	∞
9	— Response Time	B	0.00	R	$\sqrt{3}$	1	0.00	∞
10	— Integration Time	B	1.4	R	$\sqrt{3}$	1	0.81	∞
11	— RF Ambient Conditions	B	3.0	R	$\sqrt{3}$	1	1.73	∞
12	— Probe Position Mechanical tolerance	B	1.4	R	$\sqrt{3}$	1	0.81	∞
13	— Probe Position with respect to Phantom Shell	B	1.4	R	$\sqrt{3}$	1	0.81	∞
14	— Extrapolation, Interpolation and Integration Algorithms for Max. SAR evaluation	B	2.3	R	$\sqrt{3}$	1	1.33	∞
Uncertainties of the DUT								
15	Deviation of experimental source from numerical source	A	4	N	1	1	4.00	5
16	Input Power and SAR drift measurement	A	5	R	$\sqrt{3}$	1	2.89	5
17	Dipole Axis to Liquid Distance	B	2	R	$\sqrt{3}$	1	1.2	∞
Phantom and Tissue Parameters								
18	— Phantom Uncertainty(shape and thickness tolerances)	B	4	R	$\sqrt{3}$	1	2.31	∞
19	Uncertainty in SAR correction for deviation(in permittivity and conductivity)	B	2	N	1	1	2.00	
20	— Liquid Conductivity Target –tolerance	B	2.5	R	$\sqrt{3}$	0.6	1.95	∞
21	— Liquid Conductivity –measurement Uncertainty)	B	4	N	$\sqrt{3}$	1	0.92	9
22	— Liquid Permittivity Target tolerance	B	2.5	R	$\sqrt{3}$	0.6	1.95	∞
23	— Liquid Permittivity –measurement uncertainty	B	5	N	$\sqrt{3}$	1	1.15	∞
Combined Standard Uncertainty				RSS			10.15	
Expanded uncertainty (Confidence interval of 95 %)				K=2			20.29	

**12 MAIN TEST INSTRUMENTS**

EQUIPMENT	TYPE	Series No.	Calibration Date	calibration period
System Simulator	E5515C	GB 47200710	2015/06/10	1 Year
SAR Probe	SATIMO	SN_0413_EP166	2015/08/10	1 Year
Dipole	SID835	SN09/13 DIP0G835-217	2014/08/28	2 Year
Dipole	SID1900	SN09/13 DIP1G900-218	2014/08/28	2 Year
Dipole	SID2450	SN09/13 DIP2G450-220	2014/08/28	2 Year
Vector Network Analyzer	ZVB8	A0802530	2015/06/08	1 Year
Signal Generator	SMR27	A0304219	2015/06/08	1 Year
Power Meter	NRP2	A140401673	2015/03/27	1 Year
Power Sensor	NPR-Z11	1138.3004.02-114072-nq	2015/03/27	1 Year
Amplifier	Nucletudes	143060	2015/03/27	1 Year
Directional Coupler	DC6180A	305827	2015/03/27	1 Year
Power Meter	NRVS	A0802531	2015/03/27	1 Year
Power Sensor	NRV-Z4	100069	2015/03/27	1 Year
Multimeter	Keithley-2000	4014020	2015/03/27	1 Year



ANNEX A

of

CCIC-SET

CONFORMANCE TEST REPORT FOR

HUMAN EXPOSURE TO ELECTROMAGNETIC FIELDS

SET2015-14025

G31

Type Name: G31

Hardware Version: H01

Software Version: V17_S72B_H01_S001

TEST SETUP

This Annex consists of 7 pages

Date of Report: 2015-10-08

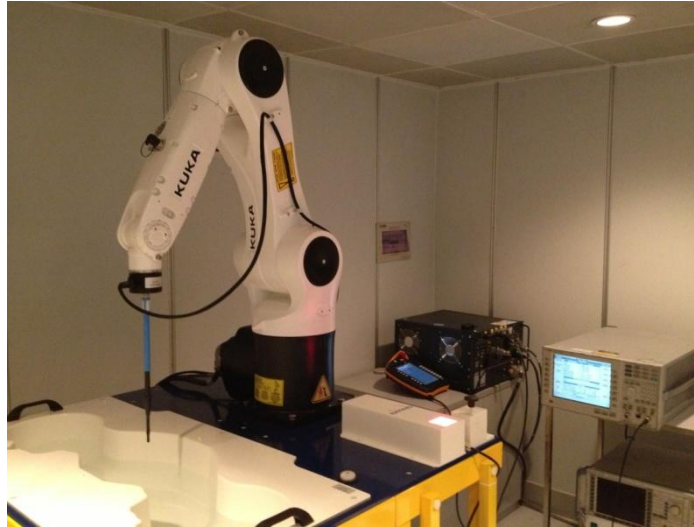


Fig.1 COMO SAR Test System

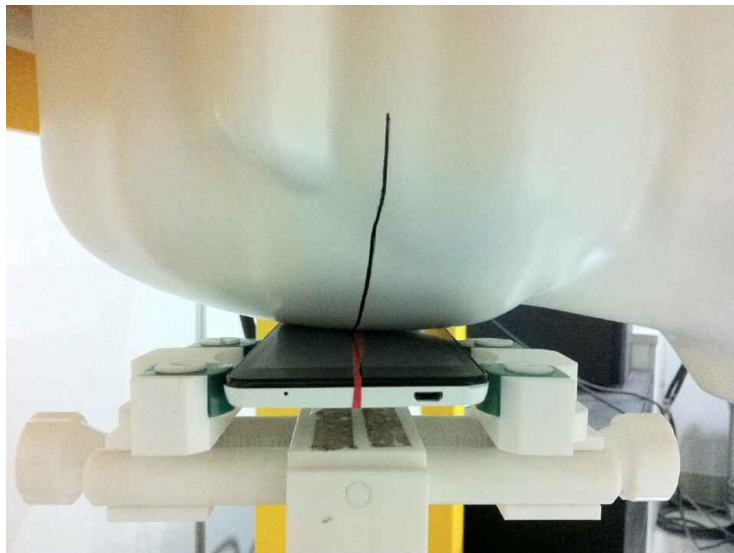


Fig.2 Right_Cheek

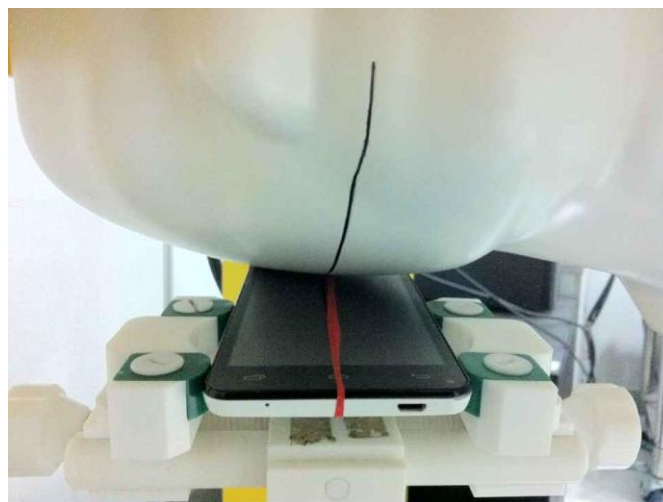


Fig.3 Right_Tilt

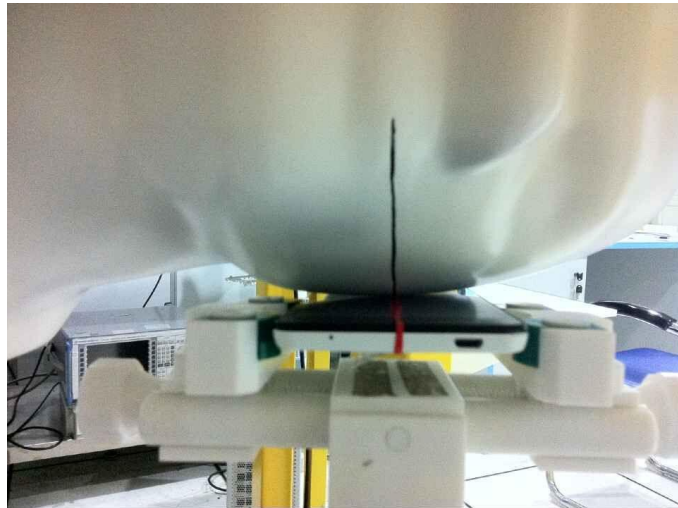


Fig.4 Left Cheek

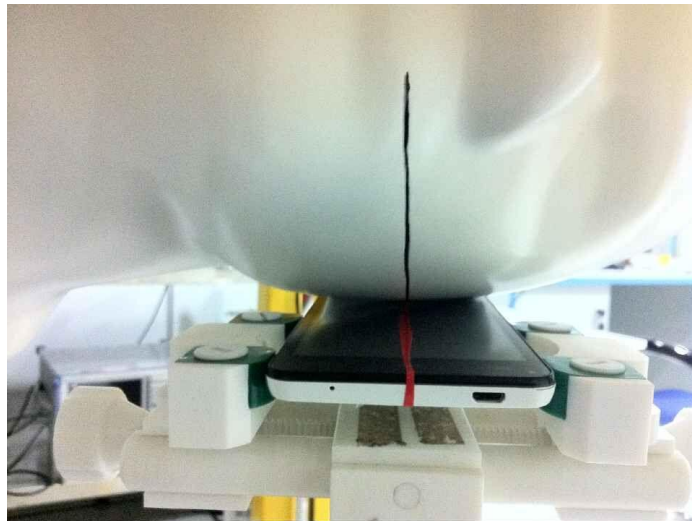


Fig.5 Left_Tilt



Fig.6 Body (Back upside,10mm separation)

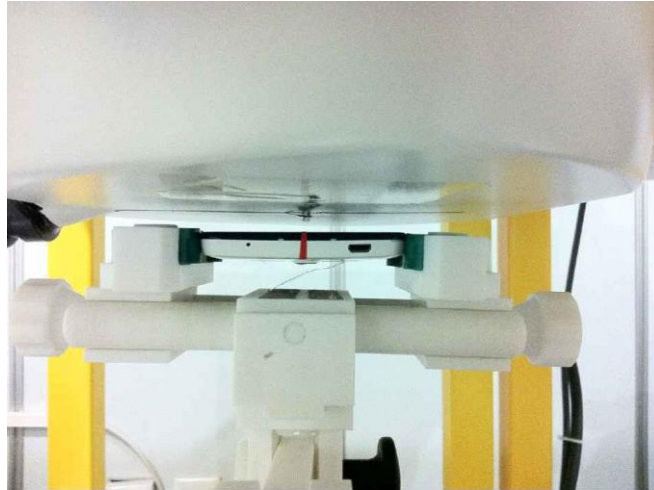


Fig.7 Body (Face upside, 10mm separation)



Fig.8 Body Edge A (UP, 10mm separation)



Fig.9 Body Edge C (UP, 10mm separation)



Fig.10 Body Edge D(Right upside,10mm separation)



Fig.11 Head Liquid of 835MHz(15cm)



Fig.12 Body Liquid of 835MHz(15cm)



Fig.13 Head Liquid of 1900MHz(15cm)



Fig.14 Body Liquid of 1900MHz(15cm)



Fig.15 Head Liquid of 2450MHz(15cm)



Fig.16 Body Liquid of 2450MHz(15cm)



ANNEX B

of

CCIC-SET

CONFORMANCE TEST REPORT FOR

HUMAN EXPOSURE TO ELECTROMAGNETIC FIELDS

SET2015-14025

G31

Type Name: G31

Hardware Version: H01

Software Version: V17_S72B_H01_S001

Sample Photographs

This Annex consists of 2 pages

Date of Report: 2015-10-08

1. Appearance



Appearance and size (obverse)



Appearance and size (reverse)



ANNEX C

of

CCIC-SET

CONFORMANCE TEST REPORT FOR

HUMAN EXPOSURE TO ELECTROMAGNETIC FIELDS

SET2015-14025

G31

Type Name: G31

Hardware Version: H01

Software Version: V17_S72B_H01_S001

System Performance Check Data and Highest SAR Plots

This Annex consists of 32 pages

Date of Report: 2015-10-08

System Performance Check (Head, 835MHz)

Type: Validation measurement

Area scan resolution: dx=8mm,dy=8mm

Zoom scan resolution: dx=8mm, dy=8mm, dz=5mm

Date of measurement:21/09/2015

Measurement duration: 21 minutes 24 seconds

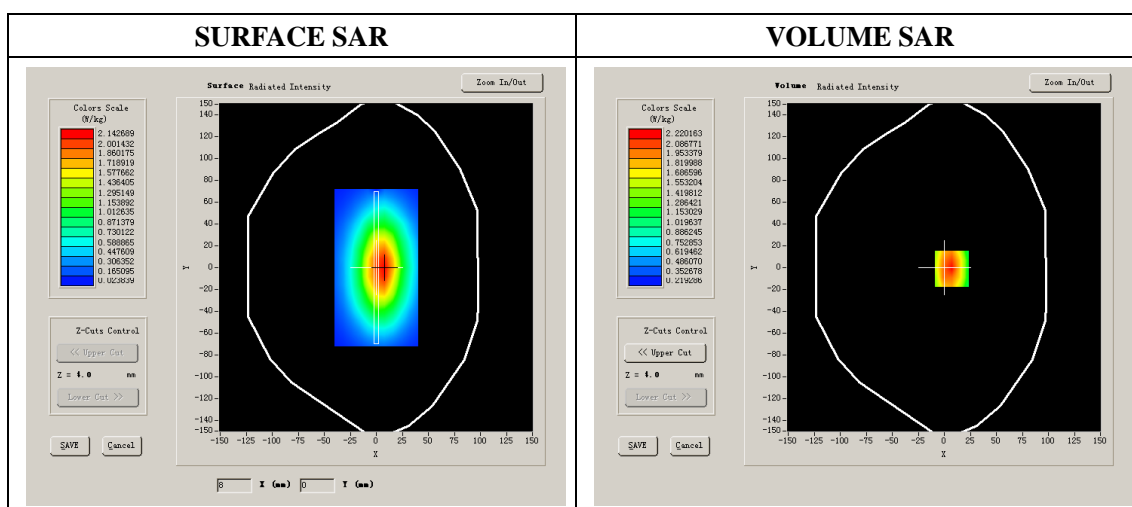
A. Experimental conditions.

Phantom File	surf_sam_plan.txt
Phantom	Flat Plane
Device Position	
Band	835MHz
Channels	
Signal	CW

B. SAR Measurement Results

Band SAR

E-Field Probe	SATIMO SN_04/13_EP166
Frequency (MHz)	835
Relative permittivity (real part)	41.32
Relative permittivity	18.97
Conductivity (S/m)	0.88
Power drift (%)	0.68
Ambient Temperature:	23.2 °C
Liquid Temperature:	23.5 °C
ConvF:	5.69
Duty factor:	1:1



Maximum location: X=7.00, Y=-1.00

SAR 10g (W/Kg)	1.820542
SAR 1g (W/Kg)	2.413845

System Performance Check (Head, 1900MHz)

Type: Validation measurement

Area scan resolution: dx=8mm,dy=8mm

Zoom scan resolution: dx=8mm, dy=8mm, dz=5mm

Date of measurement: 23/09/2015

Measurement duration: 22 minutes 32 seconds

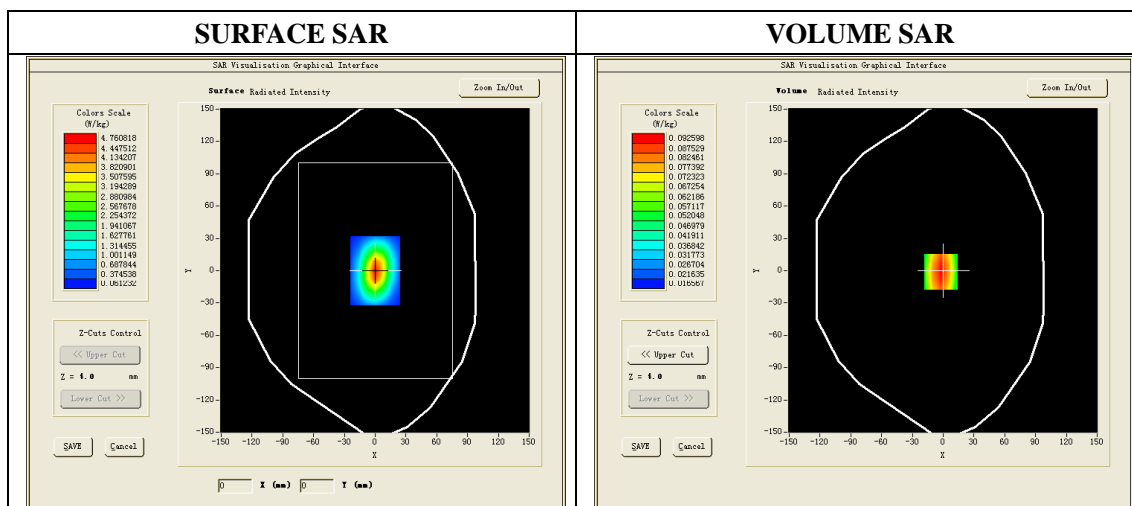
A. Experimental conditions.

Phantom File	surf_sam_plan.txt
Phantom	Flat Plane
Device Position	
Band	1900MHz
Channels	
Signal	CW

B. SAR Measurement Results

Band SAR

E-Field Probe	SATIMO SN_04/13_EP166
Frequency (MHz)	1900.000000
Relative permittivity (real part)	39.84
Relative permittivity	13.17
Conductivity (S/m)	1.39
Power drift (%)	-0.51
Ambient Temperature:	22.2 °C
Liquid Temperature:	22.5 °C
ConvF:	5.25
Duty factor:	1:1



Maximum location: X=6.00, Y=0.00

SAR 10g (W/Kg)	5.153458
SAR 1g (W/Kg)	9.867282

System Performance Check (Head, 2450MHz)

Type: Phone measurement (Complete)

Area scan resolution: dx=8mm,dy=8mm

Zoom scan resolution: dx=8mm, dy=8mm, dz=5mm

Date of measurement:25/09/2015

Measurement duration: 21 minutes 24 seconds

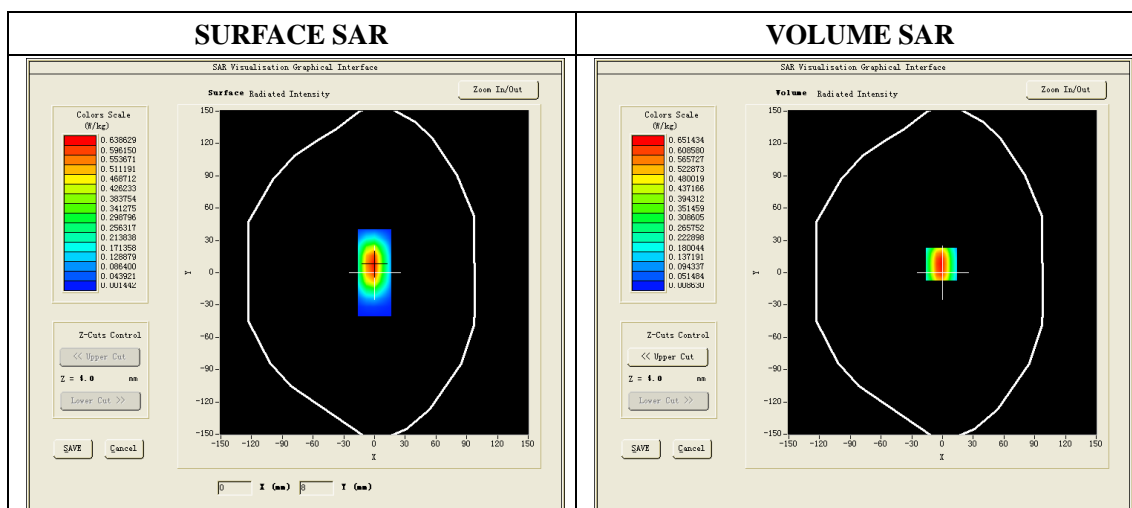
A. Experimental conditions.

Phantom File	surf_sam_plan.txt
Phantom	Validation plane
Device Position	Dipole
Band	2450MHz
Channels	
Signal	CW

B. SAR Measurement Results

Band SAR

E-Field Probe	SATIMO SN_04/13_EP166
Frequency (MHz)	2450
Relative permittivity (real part)	38.96
Relative permittivity	13.22
Conductivity (S/m)	1.80
Power Drift (%)	-1.52
ConvF:	4.93
Duty factor:	1:1



Maximum location: X=0.00, Y=8.00

SAR 10g (W/Kg)	5.916247
SAR 1g (W/Kg)	13.183472

System Performance Check (Body, 835MHz)

Type: Validation measurement

Area scan resolution: dx=8mm,dy=8mm

Zoom scan resolution: dx=8mm, dy=8mm, dz=5mm

Date of measurement: 22/09/2015

Measurement duration: 20 minutes 12 seconds

A. Experimental conditions.

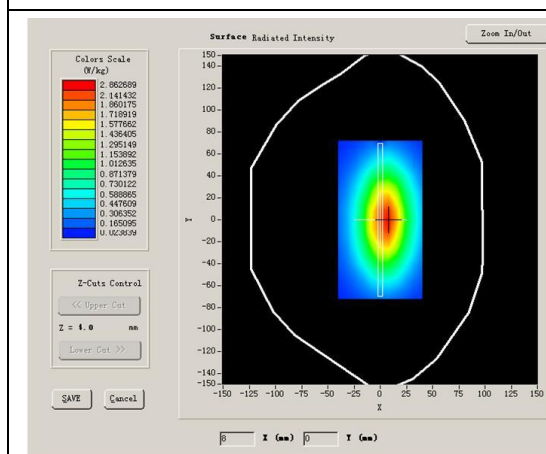
Phantom File	surf_sam_plan.txt
Phantom	Flat Plane
Device Position	Dipole
Band	835MHz
Channels	
Signal	CW

B. SAR Measurement Results

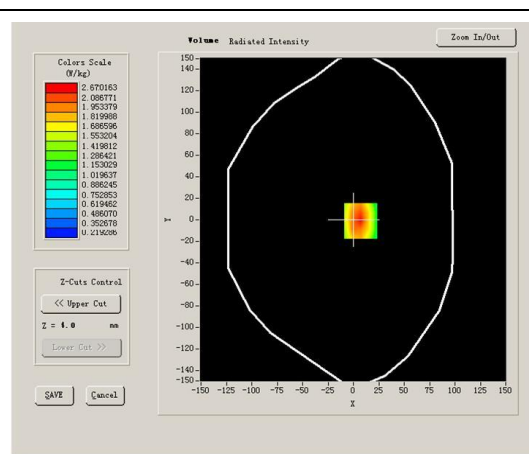
Band SAR

E-Field Probe	SATIMO SN_04/13_EP166
Frequency (MHz)	835
Relative permittivity (real part)	54.82
Relative permittivity	20.48
Conductivity (S/m)	0.95
Power drift (%)	2.30
Ambient Temperature:	22.2 °C
Liquid Temperature:	22.5 °C
ConvF:	5.82
Duty factor:	1:1

SURFACE SAR



VOLUME SAR



Maximum location: X=7.00, Y=-1.00

SAR 10g (W/Kg)	1.632514
SAR 1g (W/Kg)	2.542683

System Performance Check (Body, 1900MHz)

Type: Validation measurement

Area scan resolution: dx=8mm,dy=8mm

Zoom scan resolution: dx=8mm, dy=8mm, dz=5mm

Date of measurement: 24/09/2015

Measurement duration: 21 minutes 34 seconds

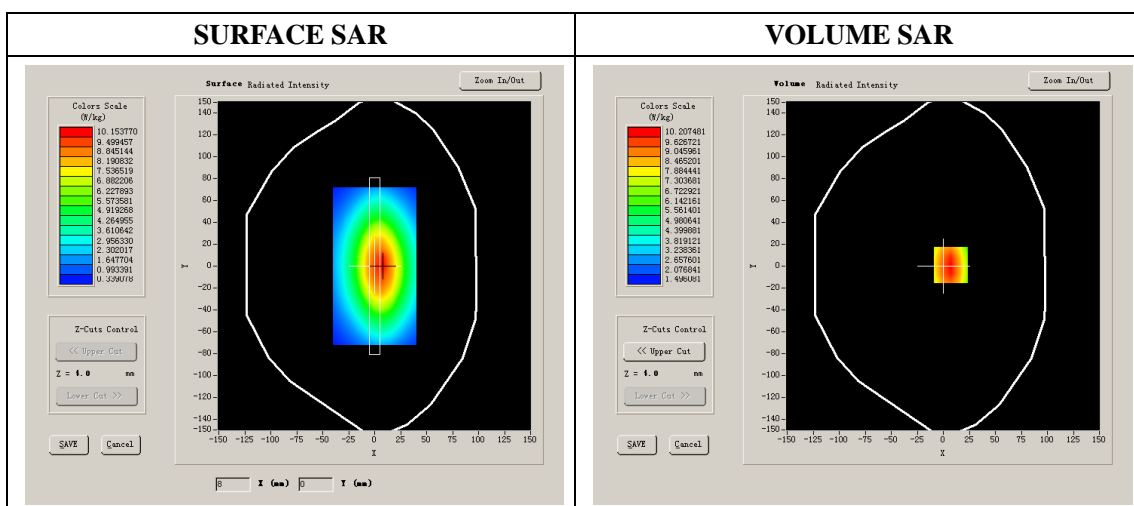
A. Experimental conditions.

Phantom File	surf_sam_plan.txt
Phantom	Validation plane
Device Position	Dipole
Band	1900MHz
Channels	
Signal	CW

B. SAR Measurement Results

Band SAR

E-Field Probe	SATIMO SN_04/13_EP166
Frequency (MHz)	1900
Relative permittivity (real part)	52.87
Relative permittivity	14.21
Conductivity (S/m)	1.50
Power Drift (%)	3.21
Ambient Temperature:	22.1 °C
Liquid Temperature:	22.6 °C
ConvF:	5.43
Duty factor:	1:1



Maximum location: X=1.00, Y=6.00

SAR 10g (W/Kg)	5.284627
SAR 1g (W/Kg)	10.128426

System Performance Check (Body, 2450MHz)

Type: Phone measurement (Complete)

Area scan resolution: dx=8mm,dy=8mm

Zoom scan resolution: dx=5mm, dy=5mm, dz=5mm

Date of measurement: 25/09/2015

Measurement duration: 22 minutes 21 seconds

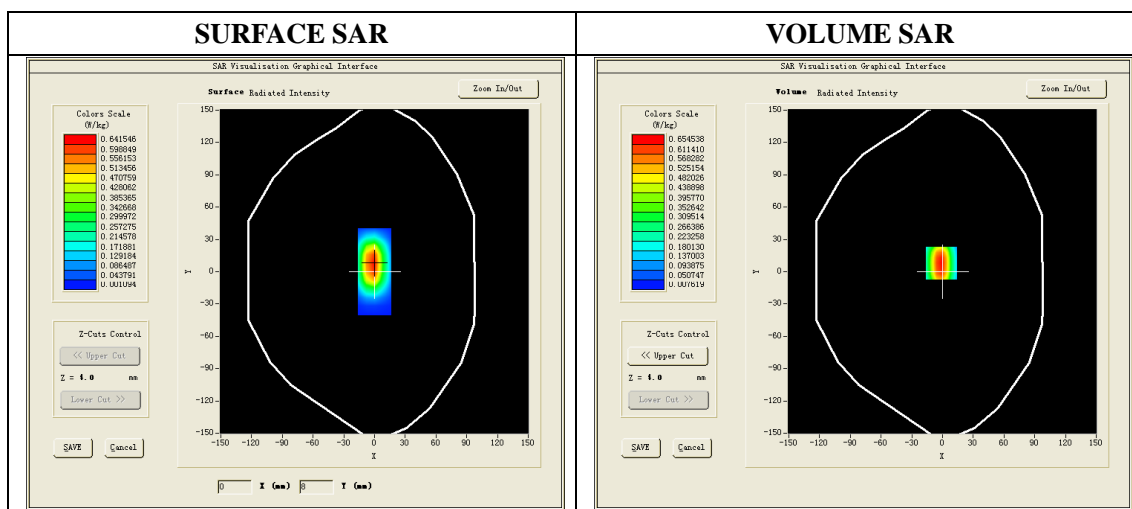
A. Experimental conditions.

Phantom File	surf_sam_plan.txt
Phantom	Validation plane
Device Position	Dipole
Band	2450MHz
Channels	
Signal	CW

B. SAR Measurement Results

Band SAR

E-Field Probe	SATIMO SN_04/13_EP166
Frequency (MHz)	2450
Relative permittivity (real part)	52.47
Relative permittivity	14.25
Conductivity (S/m)	1.94
Power Drift (%)	-0.31
Duty factor:	1:1
ConvF:	5.09



Maximum location: X=0.00, Y=8.00

SAR 10g (W/Kg)	6.046258
SAR 1g (W/Kg)	13.074232

Plot 1: GSM850, Left Cheek, High

Type: Phone measurement

Date of measurement: 21/09/2015

Measurement duration: 6 minutes 37 seconds

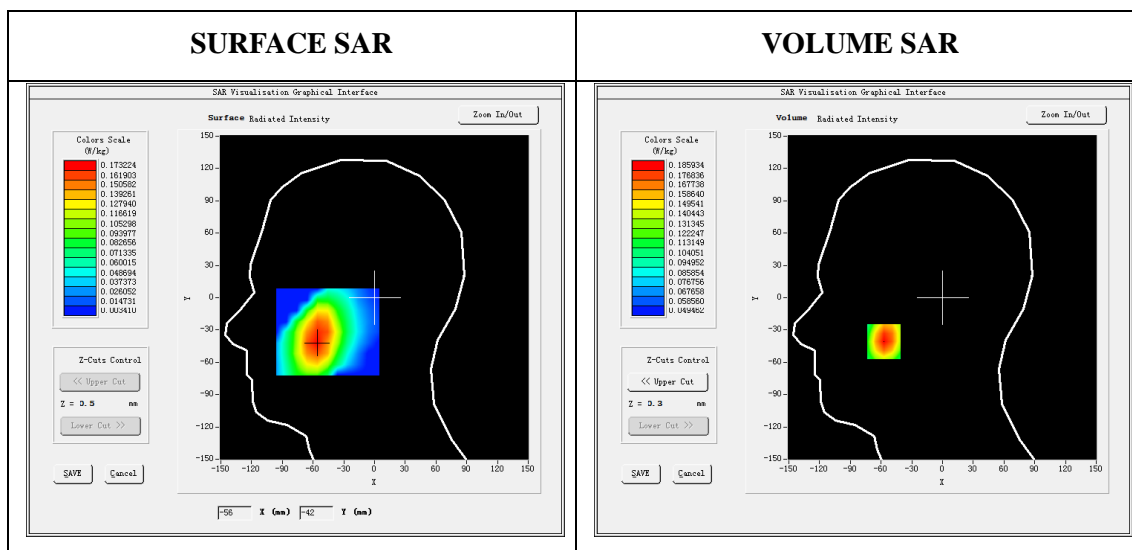
Mobile Phone IMEI number: --

A. Experimental conditions.

Area Scan	dx=8mm dy=8mm
ZoomScan	5x5x7,dx=8mm dy=8mm dz=5mm
Phantom	Left head
Device Position	Cheek
Band	GSM850
Channels	251
Signal	GSM (Duty cycle: 1:8)

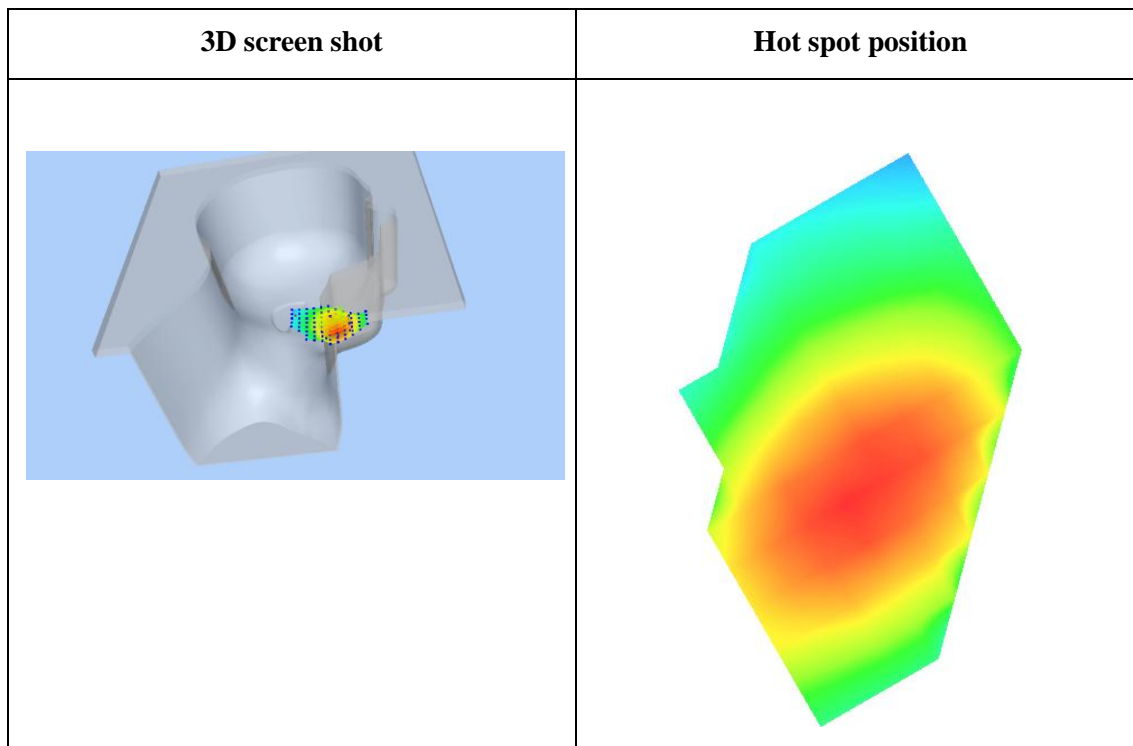
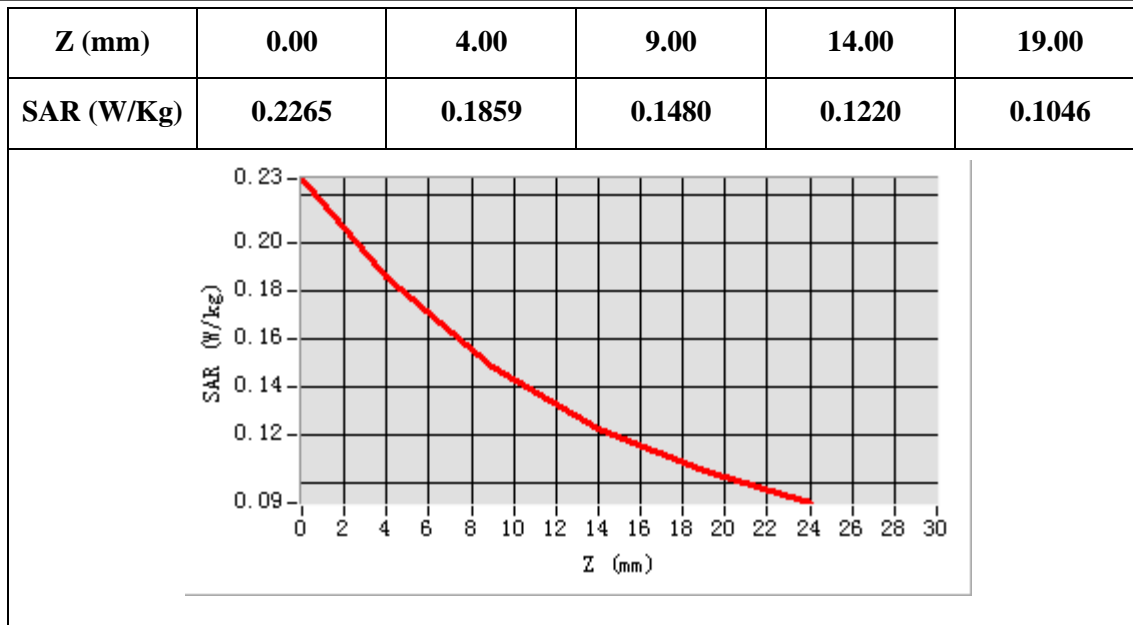
B. SAR Measurement Results

E-Field Probe	SATIMO SN_04/13_EP166
Frequency (MHz)	848.8
Relative permittivity (real part)	41.32
Relative permittivity (imaginary part)	18.97
Conductivity (S/m)	0.88
Variation (%)	-0.03
ConvF:	5.69



Maximum location: X=-57.00, Y=-41.00

SAR 10g (W/Kg)	0.135727
SAR 1g (W/Kg)	0.179129



Plot 2: GSM850, Back, High

Type: Phone measurement

Date of measurement: 22/09/2015

Measurement duration: 7 minutes 12 seconds

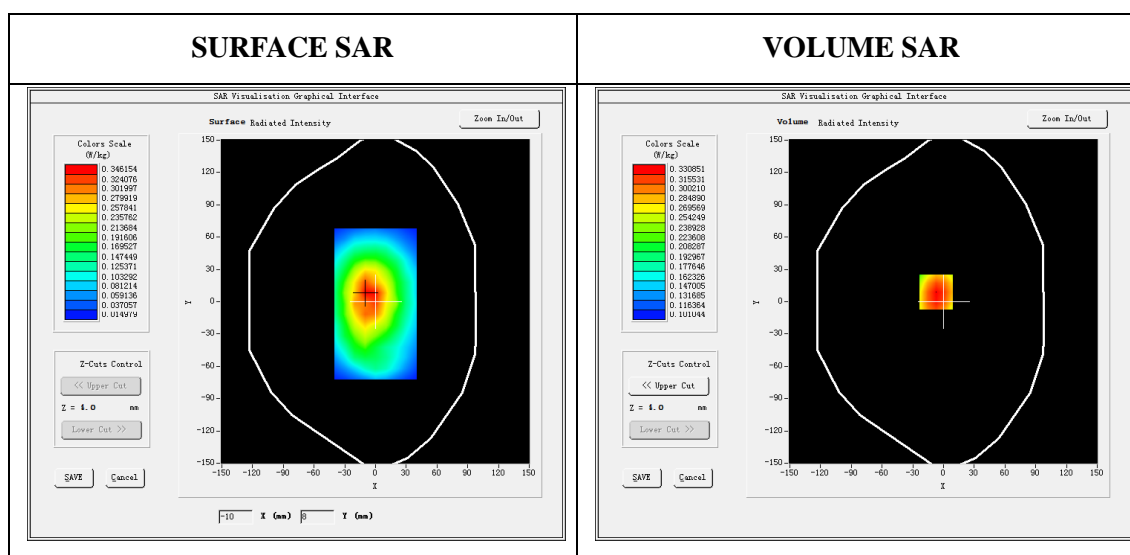
Mobile Phone IMEI number: --

A. Experimental conditions.

Area Scan	dx=8mm dy=8mm
ZoomScan	5x5x7,dx=8mm dy=8mm dz=5mm
Phantom	Validation plane
Device Position	Back
Band	GSM850
Channels	251
Signal	GSM(Duty cycle: 1:8)

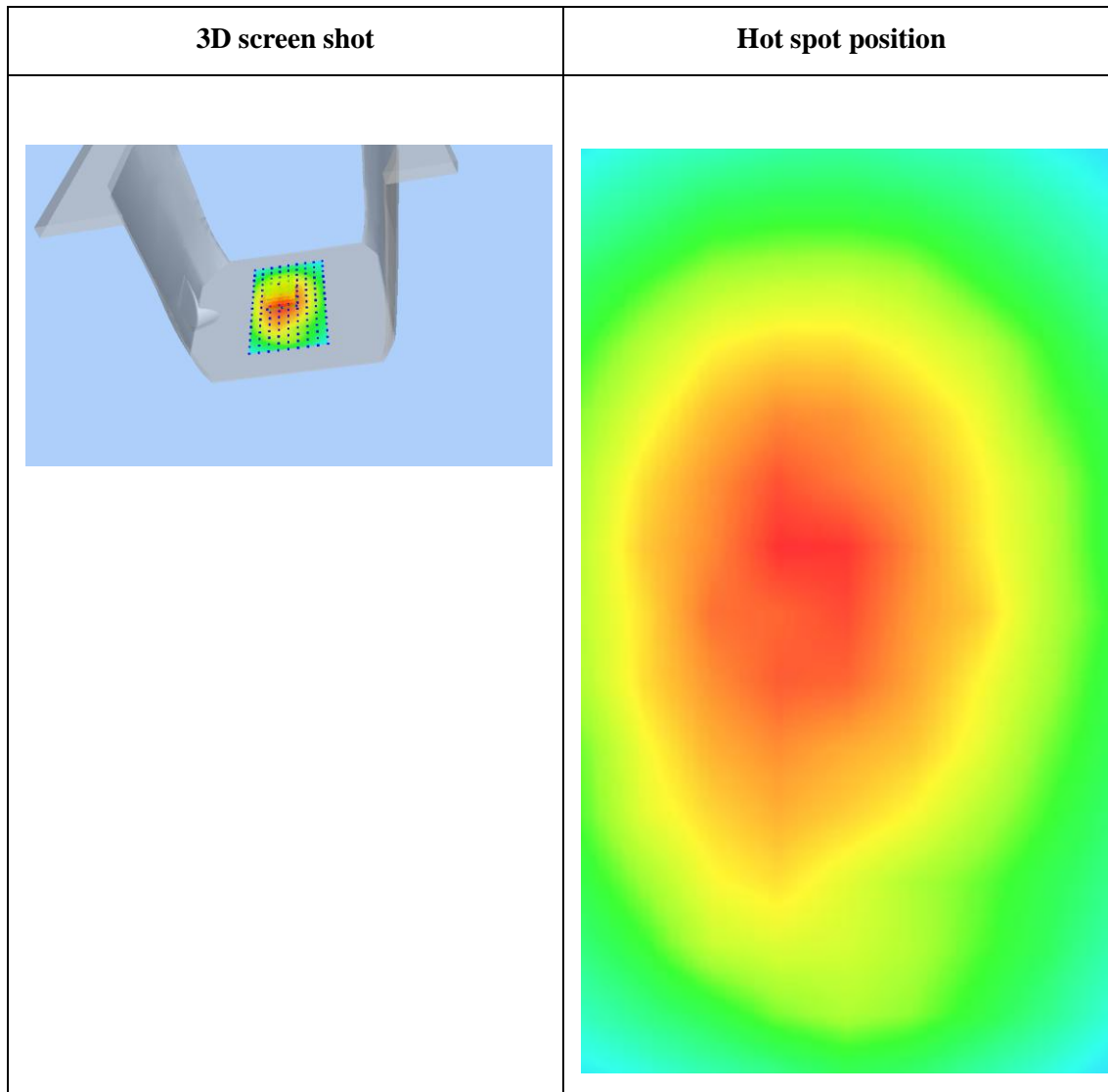
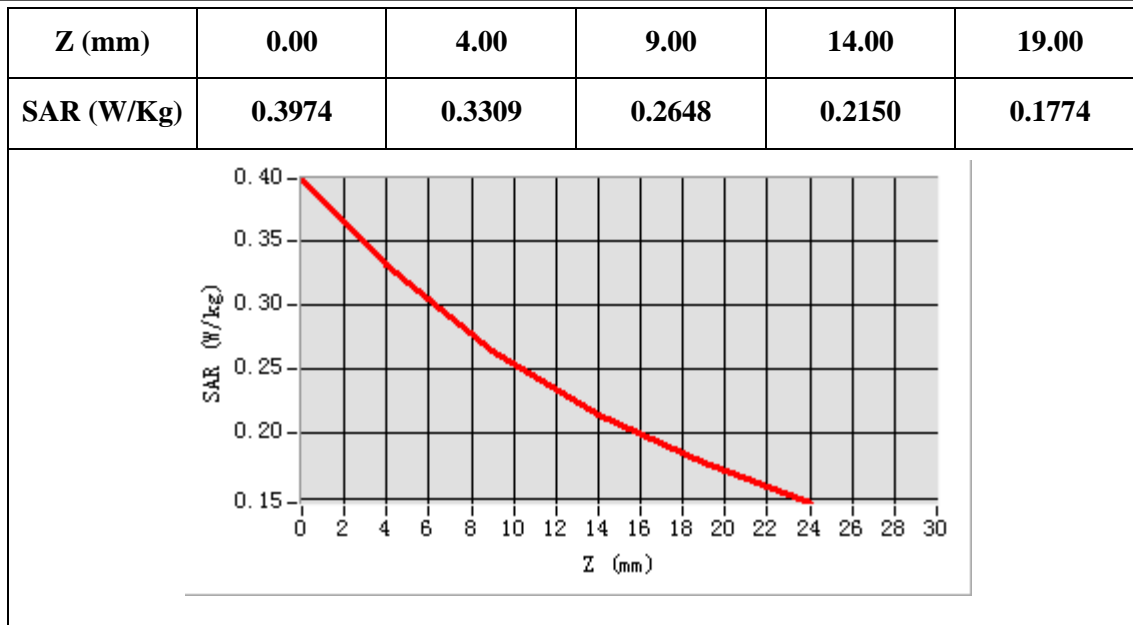
B. SAR Measurement Results

E-Field Probe	SATIMO SN_04/13_EP166
Frequency (MHz)	848.8
Relative permittivity (real part)	54.82
Relative permittivity (imaginary part)	20.48
Conductivity (S/m)	0.95
Variation (%)	-1.97
ConvF:	5.82



Maximum location: X=-7.00, Y=9.00

SAR 10g (W/Kg)	0.247457
SAR 1g (W/Kg)	0.321271



Plot 3: GPRS850, Back, Low

Type: Phone measurement

Date of measurement: 22/09/2015

Measurement duration: 7 minutes 09seconds

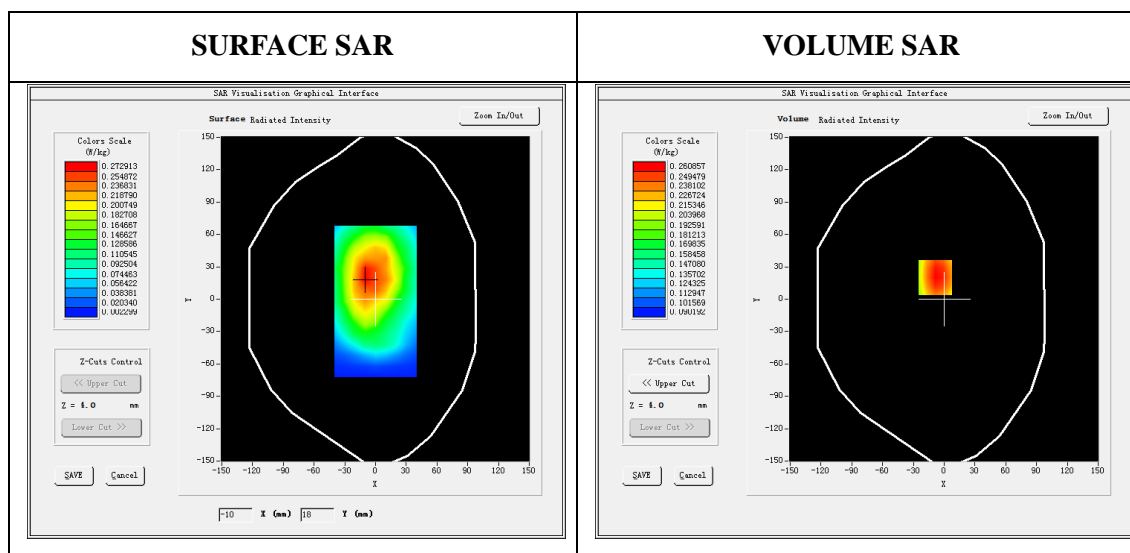
Mobile Phone IMEI number: --

A. Experimental conditions.

Area Scan	dx=8mm dy=8mm
ZoomScan	5x5x7,dx=8mm dy=8mm dz=5mm
Phantom	Validation plane
Device Position	Back
Band	GPRS850
Channels	128
Signal	GPRS(Duty cycle: 1:4)

B. SAR Measurement Results

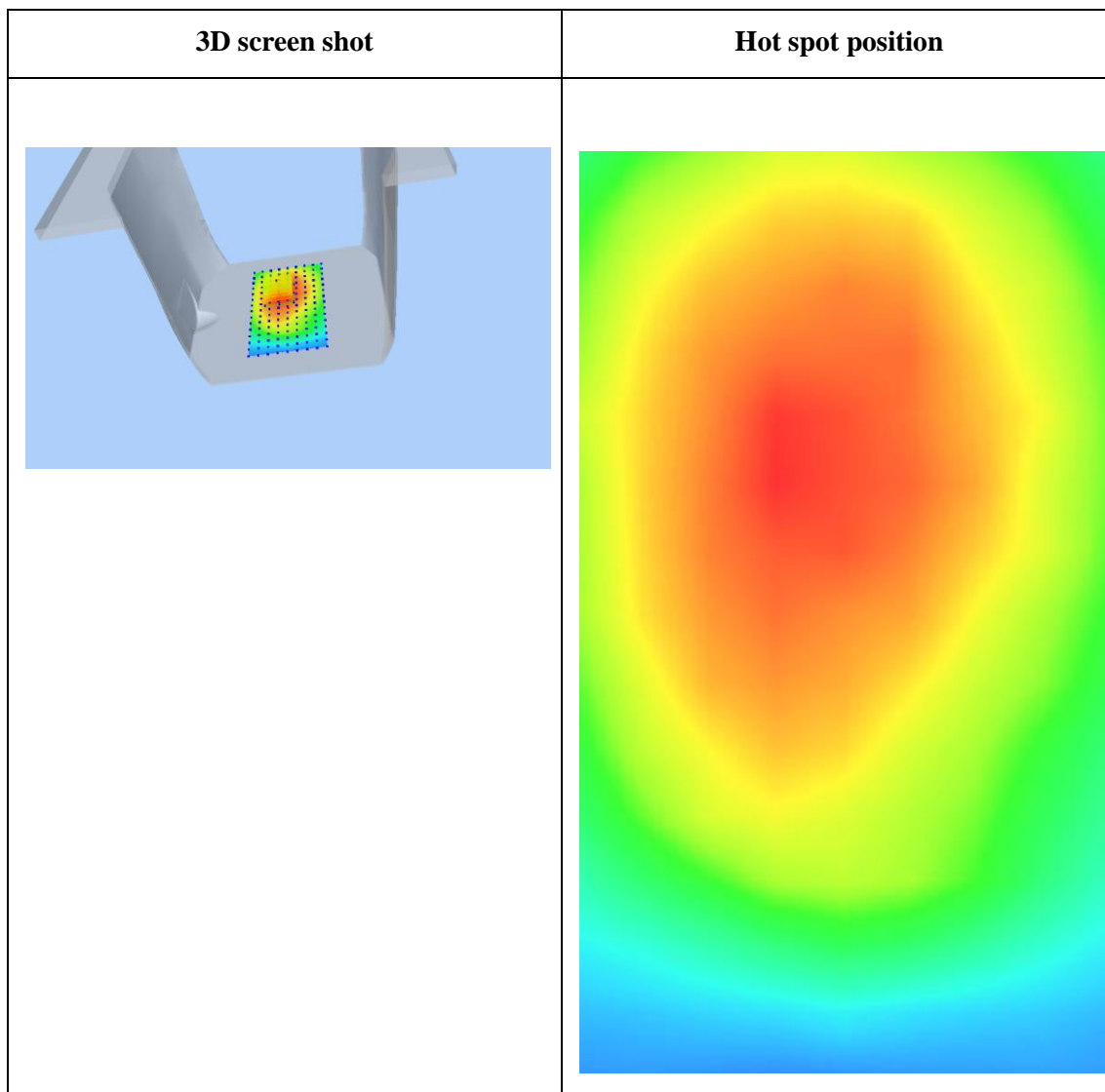
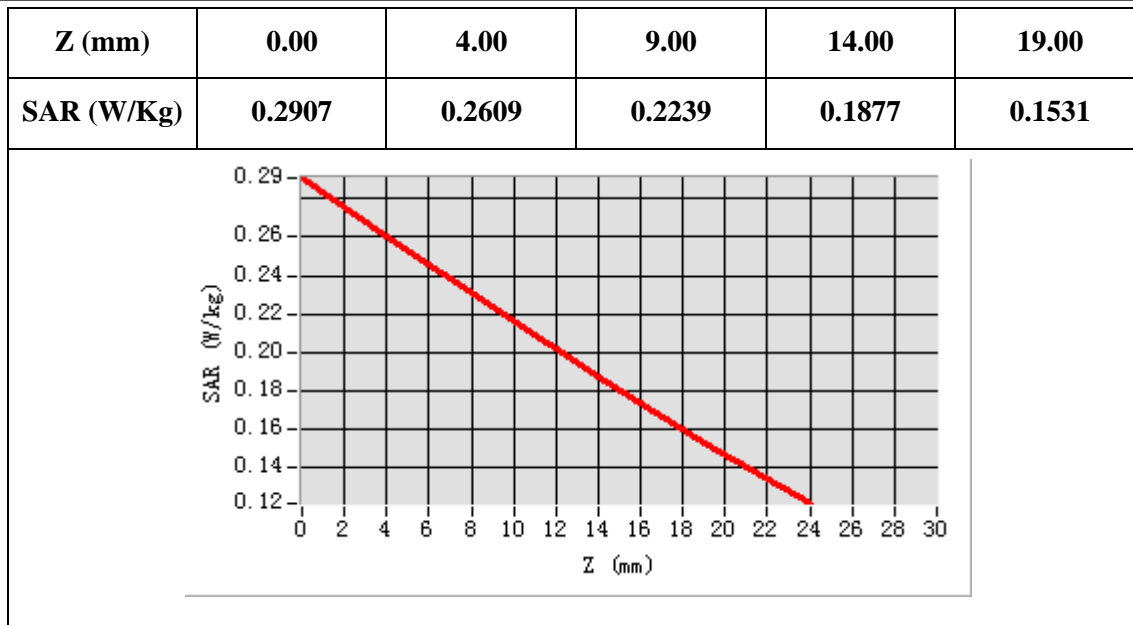
E-Field Probe	SATIMO SN_04/13_EP166
Frequency (MHz)	848.8
Relative permittivity (real part)	54.82
Relative permittivity (imaginary part)	20.48
Conductivity (S/m)	0.95
Variation (%)	-1.06
ConvF:	5.82



Maximum location: X=-9.00, Y=20.00

SAR Peak: 0.29 W/kg

SAR 10g (W/Kg)	0.202987
SAR 1g (W/Kg)	0.254476



Plot 4: GSM1900, Left Cheek, Low

Type: Phone measurement

Date of measurement: 23/09/2015

Measurement duration: 7 minutes 03 seconds

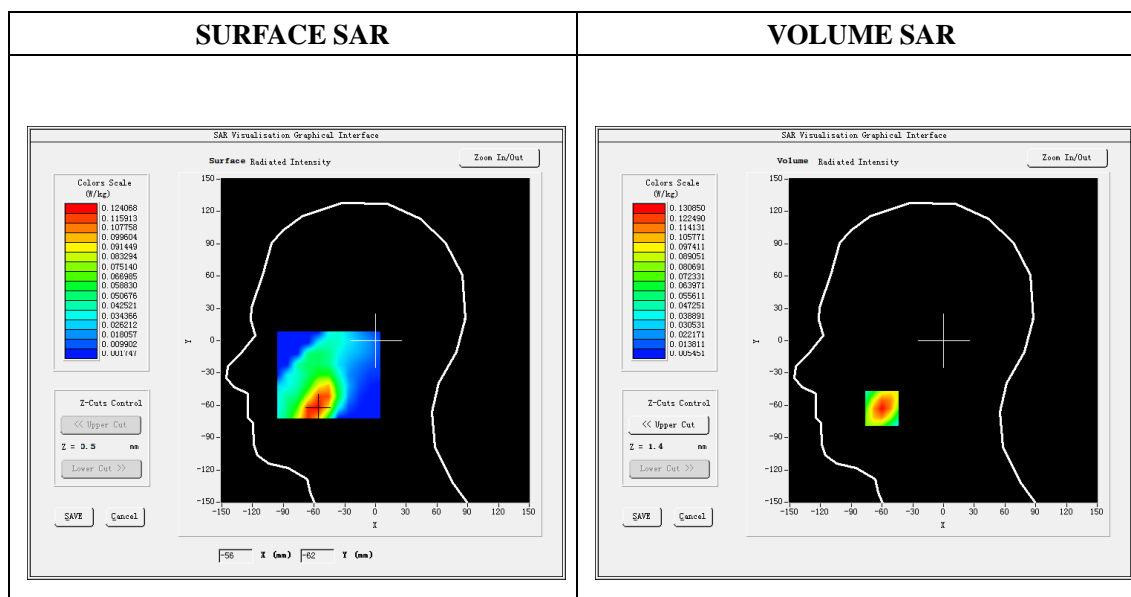
Mobile Phone IMEI number: --

A. Experimental conditions.

Area Scan	dx=8mm dy=8mm
ZoomScan	5x5x7,dx=8mm dy=8mm dz=5mm
Phantom	Left head
Device Position	Cheek
Band	GSM1900
Channels	512
Signal	GSM (Duty cycle: 1:8)

B. SAR Measurement Results

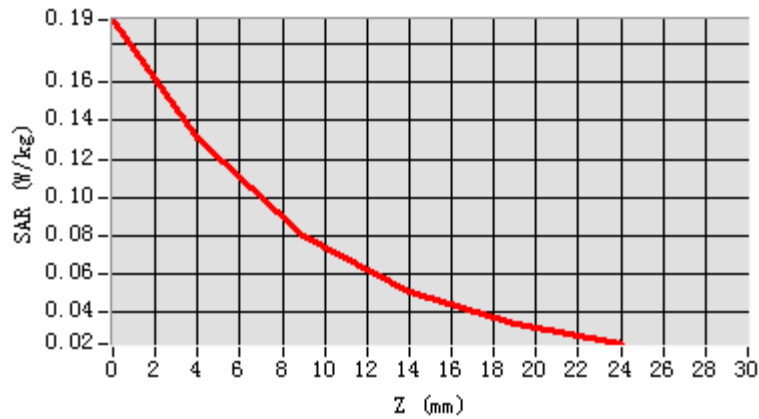
E-Field Probe	SATIMO SN_04/13_EP166
Frequency (MHz)	1850.2
Relative permittivity (real part)	39.84
Relative permittivity (imaginary part)	13.17
Conductivity (S/m)	1.39
Variation (%)	-4.71
ConvF:	5.25

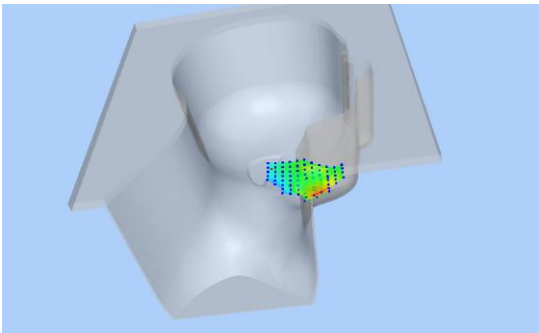
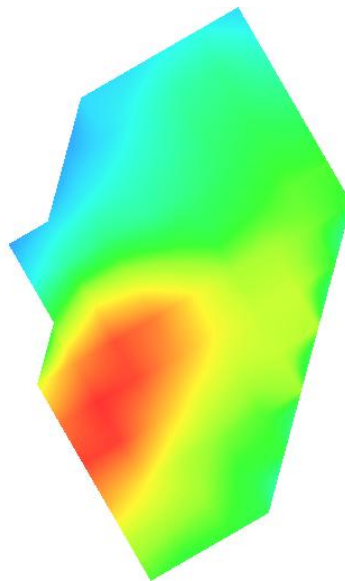


Maximum location: X=-60.00, Y=-63.00

SAR 10g (W/Kg)	0.072303
SAR 1g (W/Kg)	0.122873

Z (mm)	0.00	4.00	9.00	14.00	19.00
SAR (W/Kg)	0.1927	0.1308	0.0803	0.0507	0.0340



3D screen shot	Hot spot position
	

Plot 5: GSM1900, Back, Low

Type: Phone measurement

Date of measurement: 24/09/2015

Measurement duration: 6 minutes 52 seconds

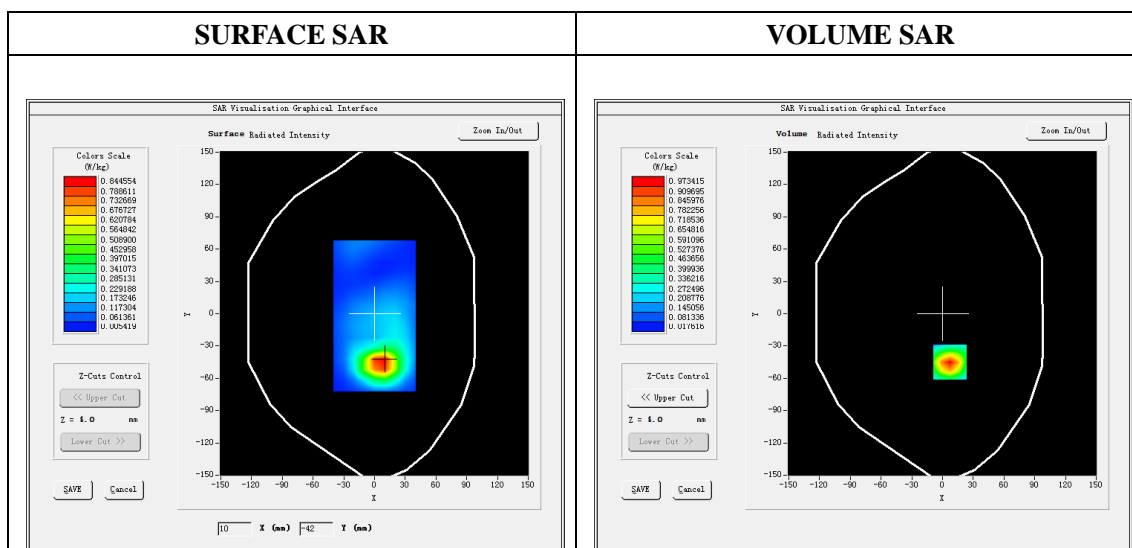
Mobile Phone IMEI number: --

A. Experimental conditions.

Area Scan	dx=8mm dy=8mm
ZoomScan	5x5x7, dx=8mm dy=8mm dz=5mm
Phantom	Validation plane
Device Position	Back
Band	GSM1900
Channels	512
Signal	GSM (Duty cycle: 1:8)

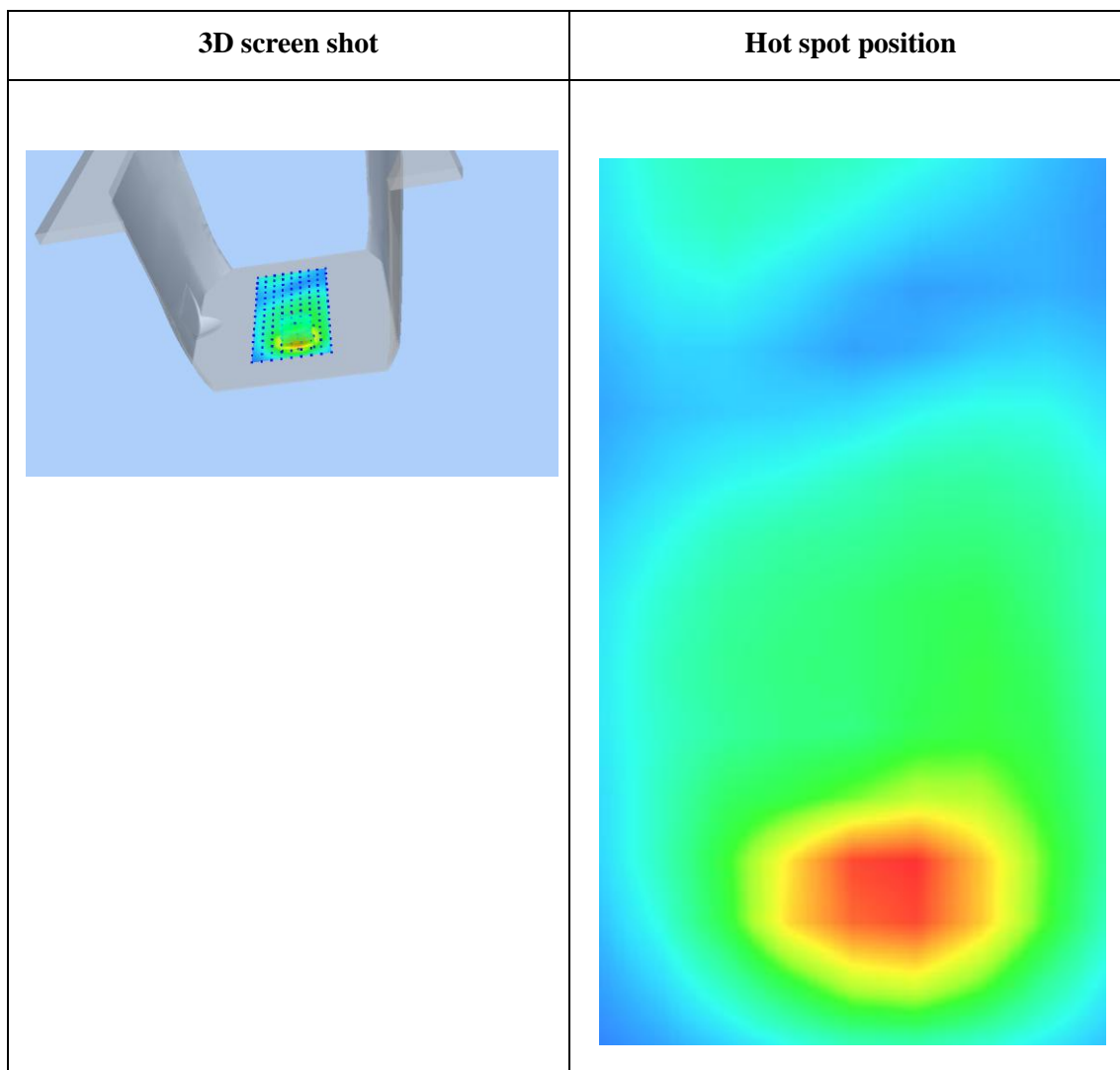
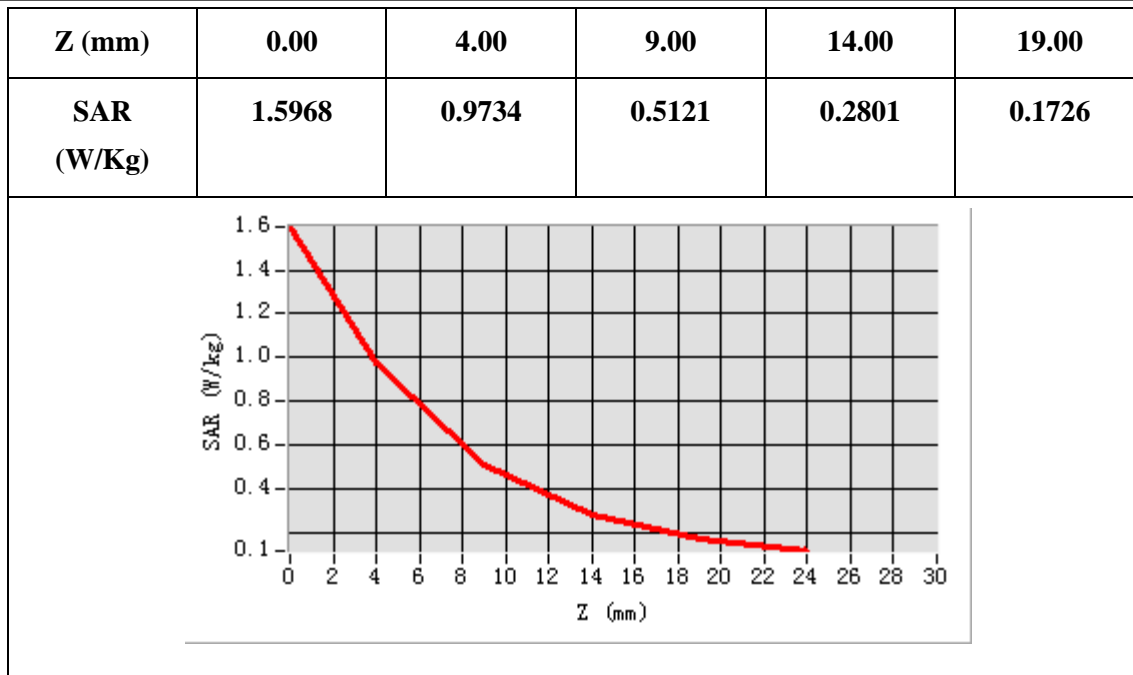
B. SAR Measurement Results

E-Field Probe	SATIMO SN_04/13_EP166
Frequency (MHz)	1850.2
Relative permittivity (real part)	52.87
Relative permittivity (imaginary part)	14.21
Conductivity (S/m)	1.50
Variation (%)	3.77
ConvF:	5.43



Maximum location: X=7.00, Y=-45.00

SAR 10g (W/Kg)	0.449838
SAR 1g (W/Kg)	0.900166



Plot 6: GPRS1900, Edge C, Low

Type: Phone measurement

Date of measurement: 24/09/2015

Measurement duration: 6 minutes 52 seconds

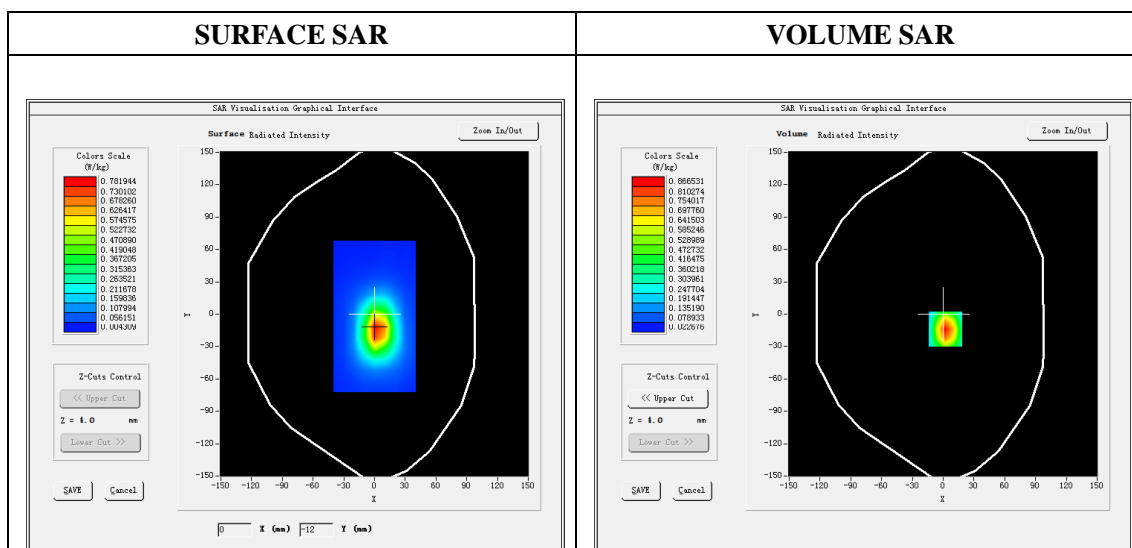
Mobile Phone IMEI number: --

A. Experimental conditions.

Area Scan	dx=8mm dy=8mm
ZoomScan	5x5x7, dx=8mm dy=8mm dz=5mm
Phantom	Validation plane
Device Position	Edge C
Band	GPRS1900
Channels	512
Signal	GPRS (Duty cycle: 1:2.67)

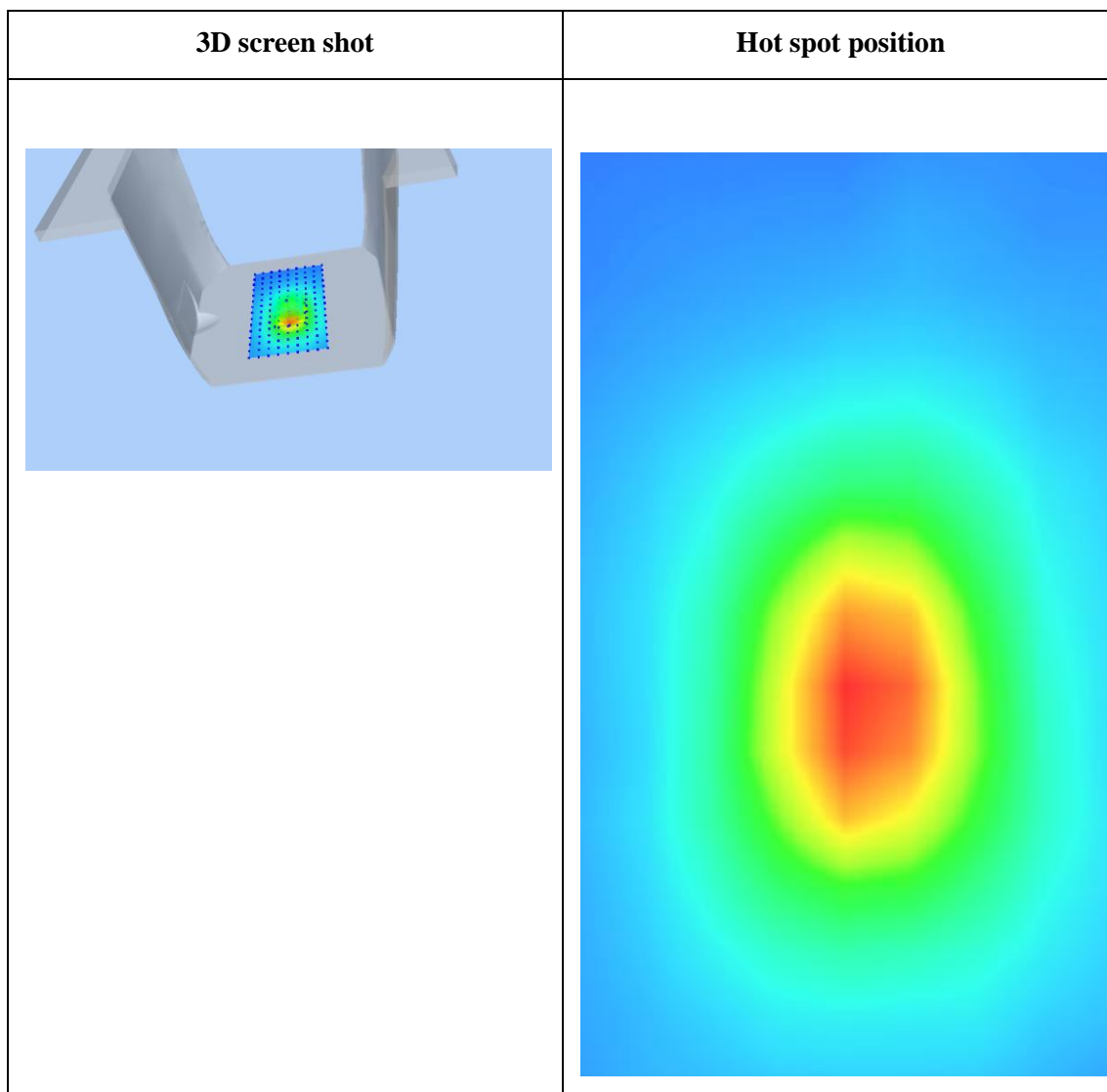
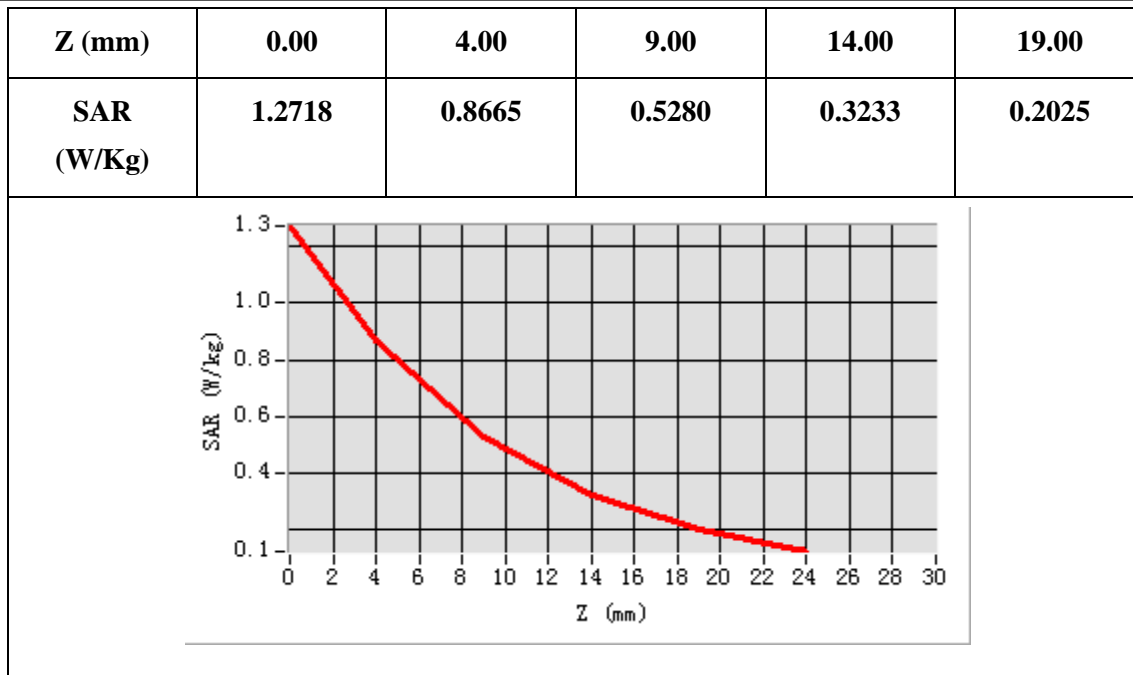
B. SAR Measurement Results

E-Field Probe	SATIMO SN_04/13_EP166
Frequency (MHz)	1850.2
Relative permittivity (real part)	52.87
Relative permittivity (imaginary part)	14.21
Conductivity (S/m)	1.50
Variation (%)	1.73
ConvF:	5.43



Maximum location: X=2.00, Y=-14.00

SAR 10g (W/Kg)	0.428425
SAR 1g (W/Kg)	0.798648



Plot 7: WCDMA850, Left Cheek, Middle

Type: Phone measurement

Date of measurement: 21/09/2015

Measurement duration: 6 minutes 53 seconds

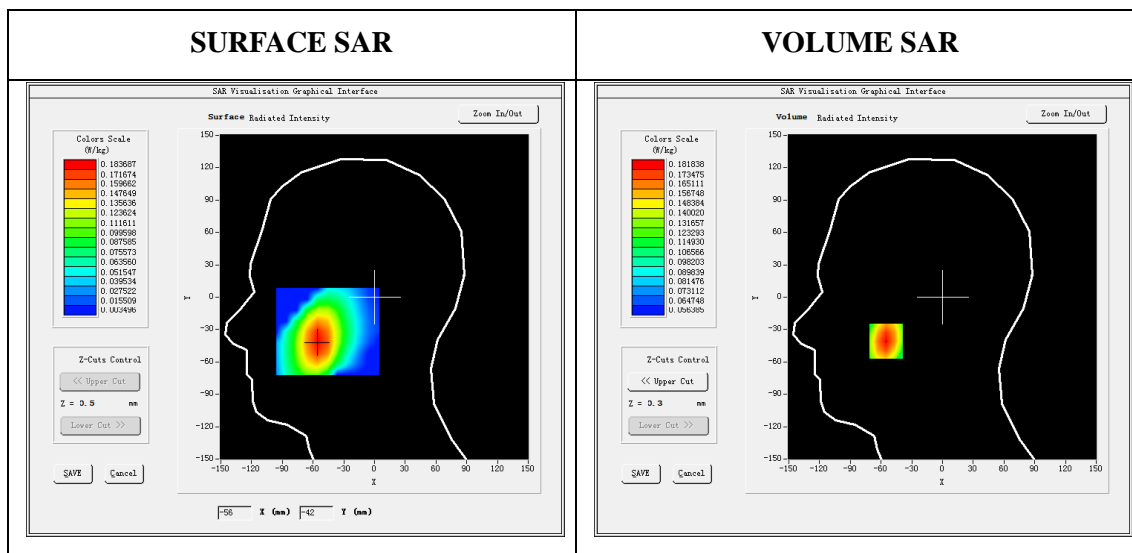
Mobile Phone IMEI number: --

A. Experimental conditions.

Area Scan	dx=8mm dy=8mm
ZoomScan	5x5x7, dx=8mm dy=8mm dz=5mm
Phantom	Left head
Device Position	Cheek
Band	Band5_WCDMA850
Channels	4183
Signal	WCDMA (Duty cycle: 1:1)

B. SAR Measurement Results

E-Field Probe	SATIMO SN_04/13_EP166
Frequency (MHz)	836.6
Relative permittivity (real part)	41.32
Relative permittivity (imaginary part)	18.97
Conductivity (S/m)	0.88
Variation (%)	0.38
ConvF:	5.69

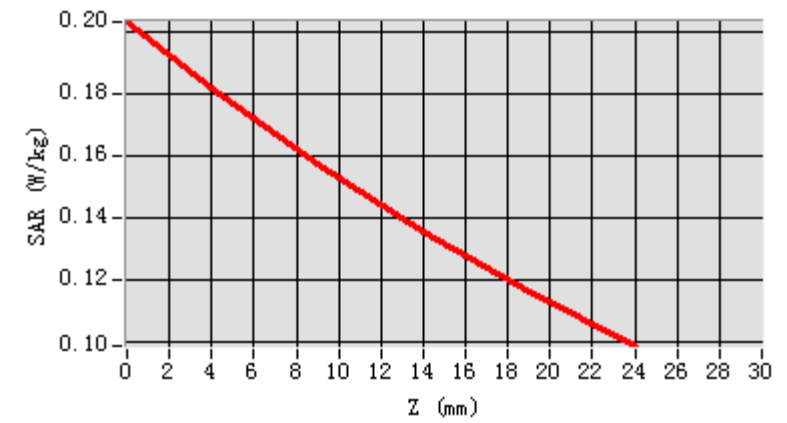


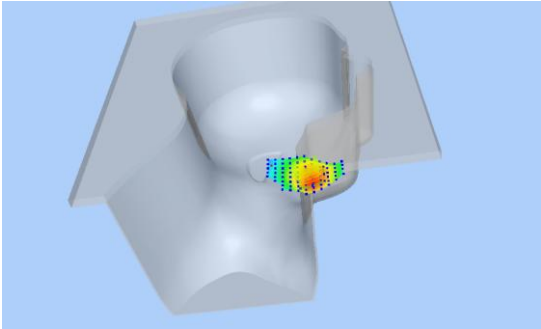
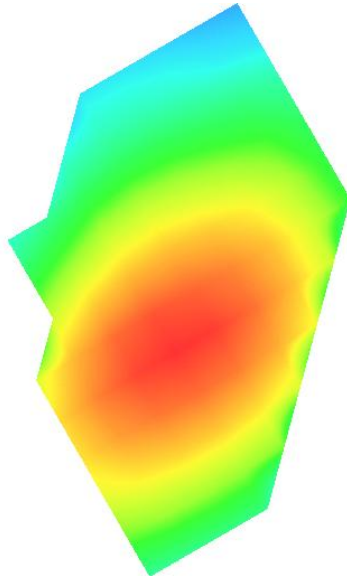
Maximum location: X=-55.00, Y=-41.00

SAR Peak: 0.20 W/kg

SAR 10g (W/Kg)	0.140671
SAR 1g (W/Kg)	0.175839

Z (mm)	0.00	4.00	9.00	14.00	19.00
SAR (W/Kg)	0.2033	0.1818	0.1575	0.1357	0.1163



3D screen shot	Hot spot position
	

Plot 8:WCDMA850, Back, Middle

Type: Phone measurement

Date of measurement:22/09/2015

Measurement duration: 7 minutes 29 seconds

Mobile Phone IMEI number: --

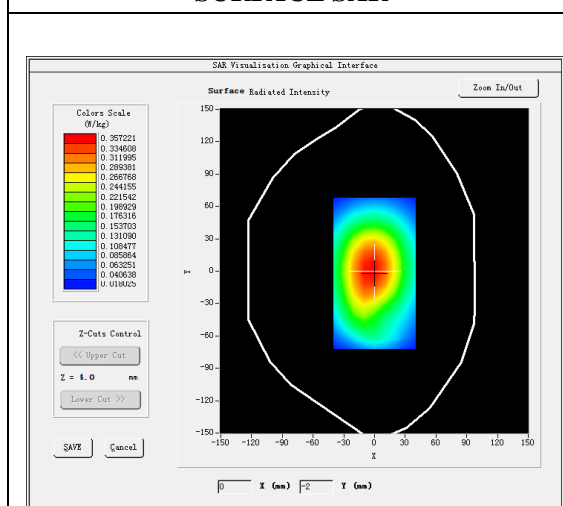
A. Experimental conditions.

Area Scan	dx=8mm dy=8mm
ZoomScan	5x5x7,dx=8mm dy=8mm dz=5mm
Phantom	Validation plane
Device Position	Back
Band	Band5_WCDMA850
Channels	4183
Signal	WCDMA (Duty cycle: 1:1)

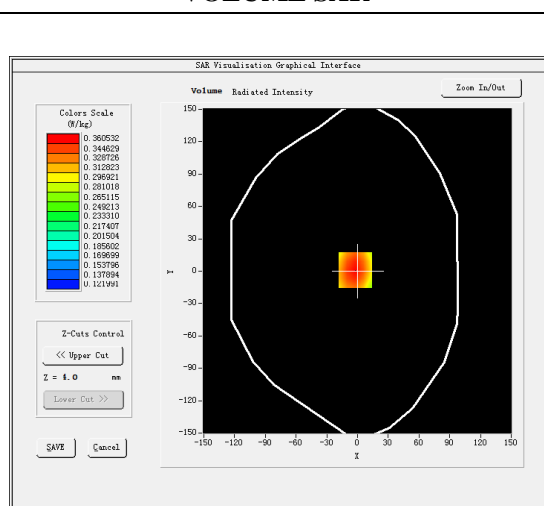
B. SAR Measurement Results

E-Field Probe	SATIMO SN_04/13_EP166
Frequency (MHz)	836.6
Relative permittivity (real part)	54.82
Relative permittivity (imaginary part)	20.48
Conductivity (S/m)	0.95
Variation (%)	-0.31
ConvF:	5.82

SURFACE SAR

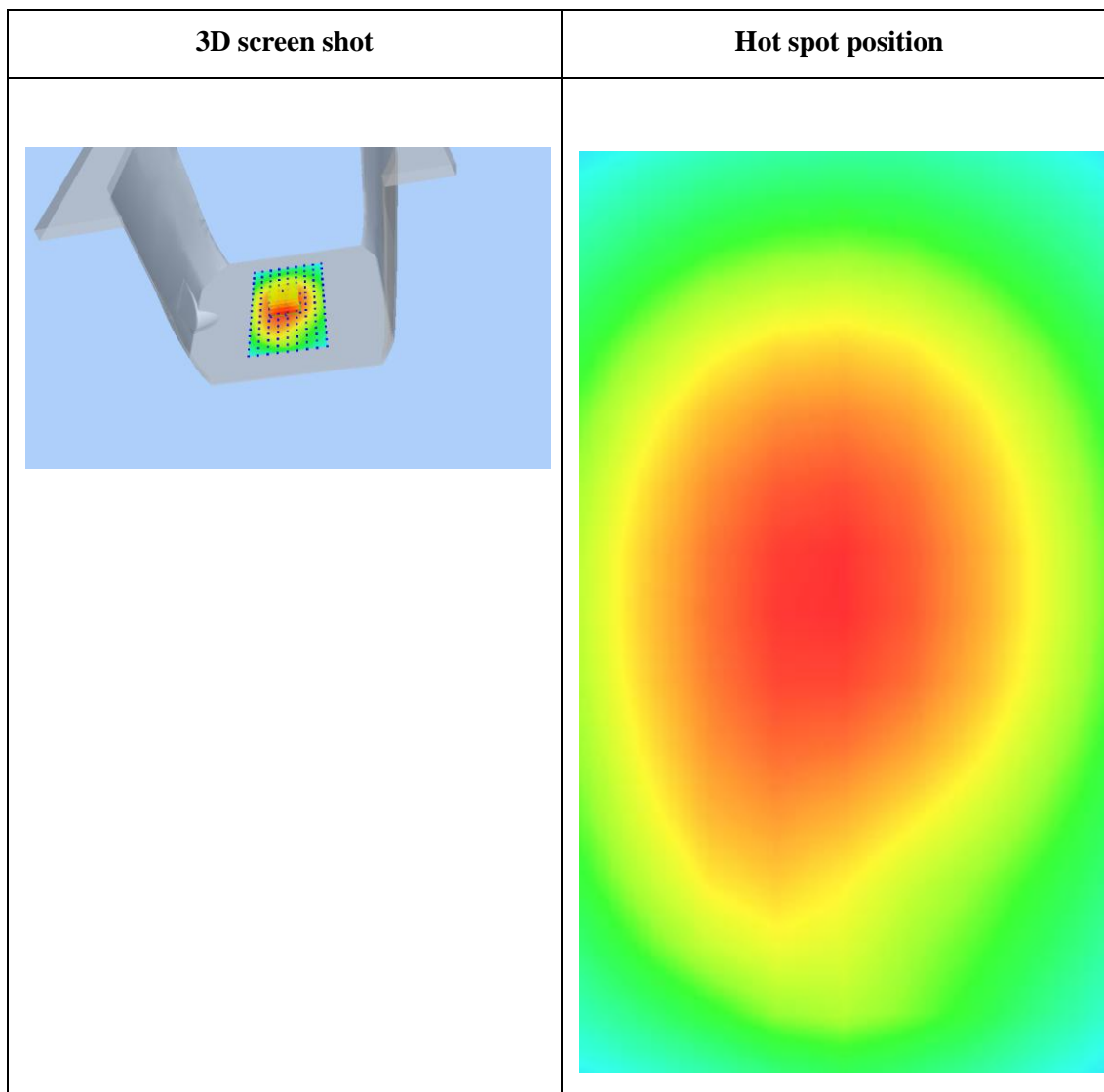
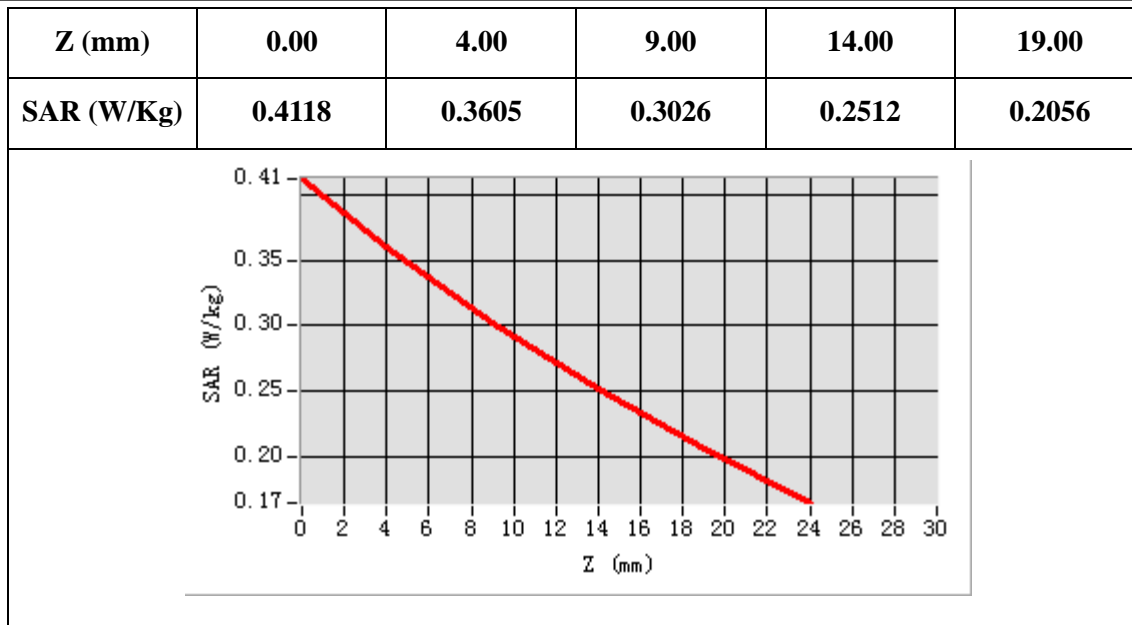


VOLUME SAR



Maximum location: X=-2.00, Y=1.00

SAR 10g (W/Kg)	0.276562
SAR 1g (W/Kg)	0.350016



Plot 9: WCDMA1900, Left Cheek, High

Type: Phone measurement

Date of measurement: 23/09/2015

Measurement duration: 7 minutes 31 seconds

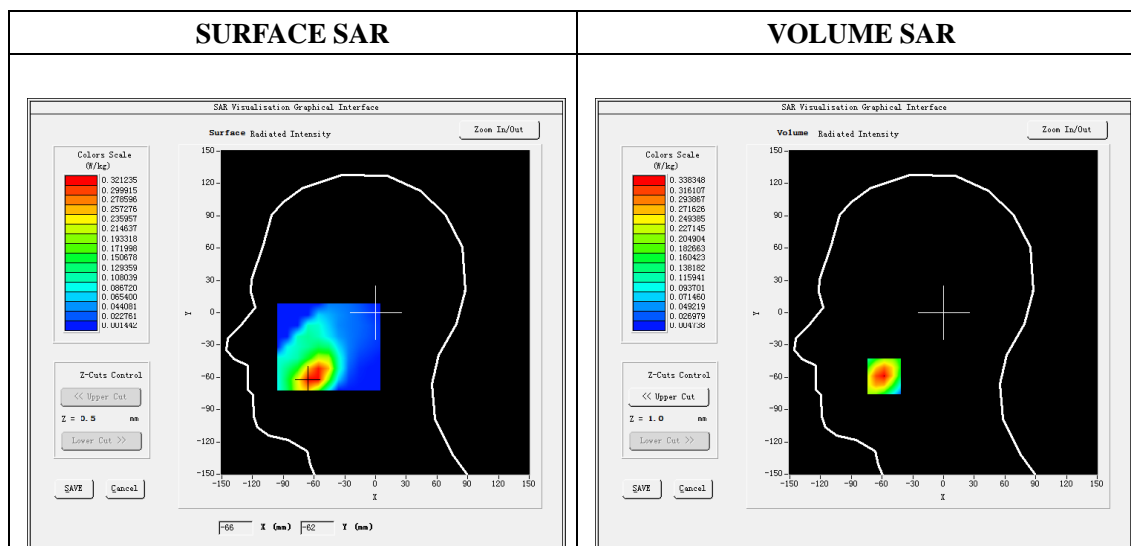
Mobile Phone IMEI number: --

A. Experimental conditions.

Area Scan	dx=8mm dy=8mm
ZoomScan	5x5x7, dx=8mm dy=8mm dz=5mm
Phantom	Validation plane
Device Position	Left head
Band	Cheek
Channels	9538
Signal	WCDMA (Duty cycle: 1:1)

B. SAR Measurement Results

E-Field Probe	SATIMO SN_04/13_EP166
Frequency (MHz)	1907.6
Relative permittivity (real part)	39.84
Relative permittivity (imaginary)	13.17
Conductivity (S/m)	1.39
Variation (%)	4.93
ConvF:	5.25

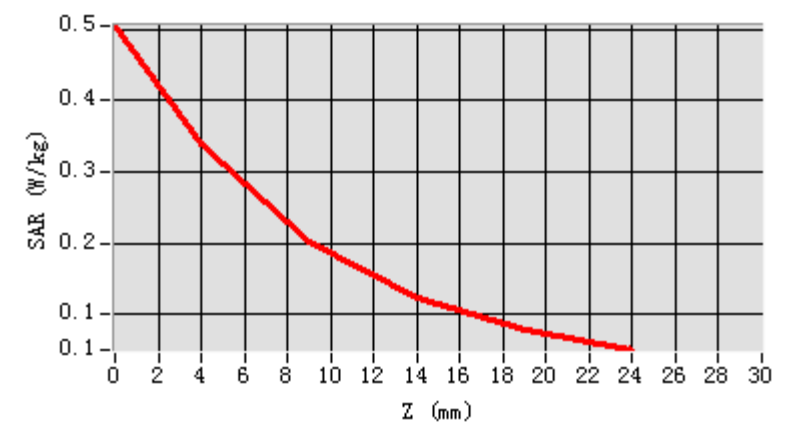


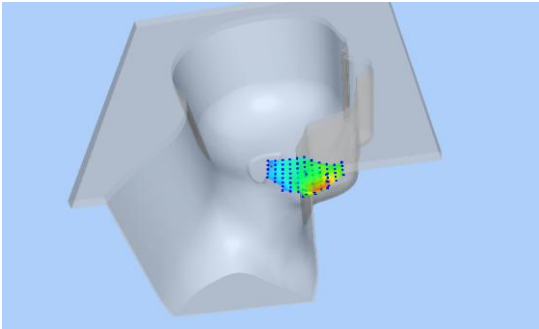
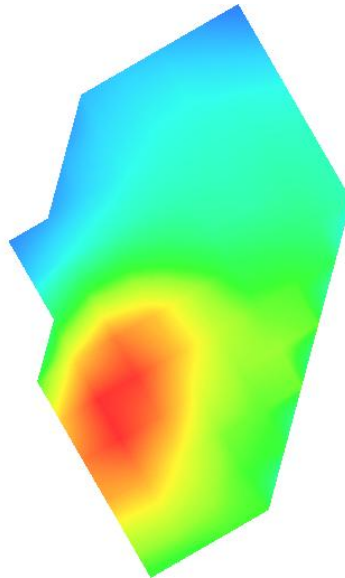
Maximum location: X=-58.00, Y=-59.00

SAR Peak: 0.51W/kg

SAR 10g (W/Kg)	0.180228
SAR 1g (W/Kg)	0.318188

Z (mm)	0.00	4.00	9.00	14.00	19.00
SAR (W/Kg)	0.5046	0.3383	0.2028	0.1238	0.0792



3D screen shot	Hot spot position
	

Plot 10:WCDMA1900, Edge C, High

Type: Phone measurement

Date of measurement: 24/09/2015

Measurement duration: 7 minutes 37 seconds

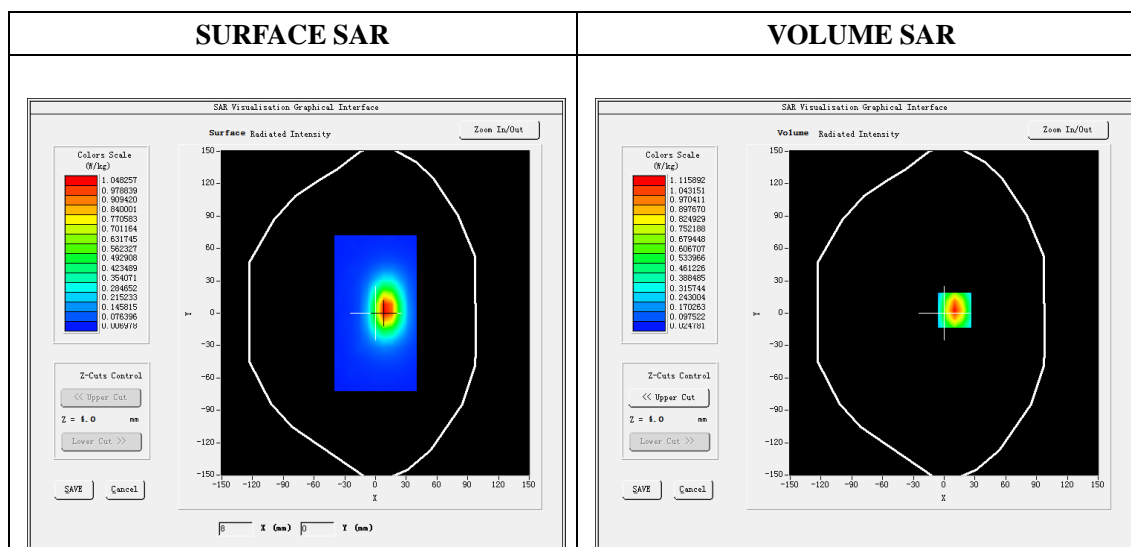
Mobile Phone IMEI number: --

A. Experimental conditions.

Area Scan	dx=8mm dy=8mm
ZoomScan	5x5x7,dx=8mm dy=8mm dz=5mm
Phantom	Validation plane
Device Position	Edge C
Band	Band2_WCDMA1900
Channels	9538
Signal	WCDMA (Duty cycle: 1:1)

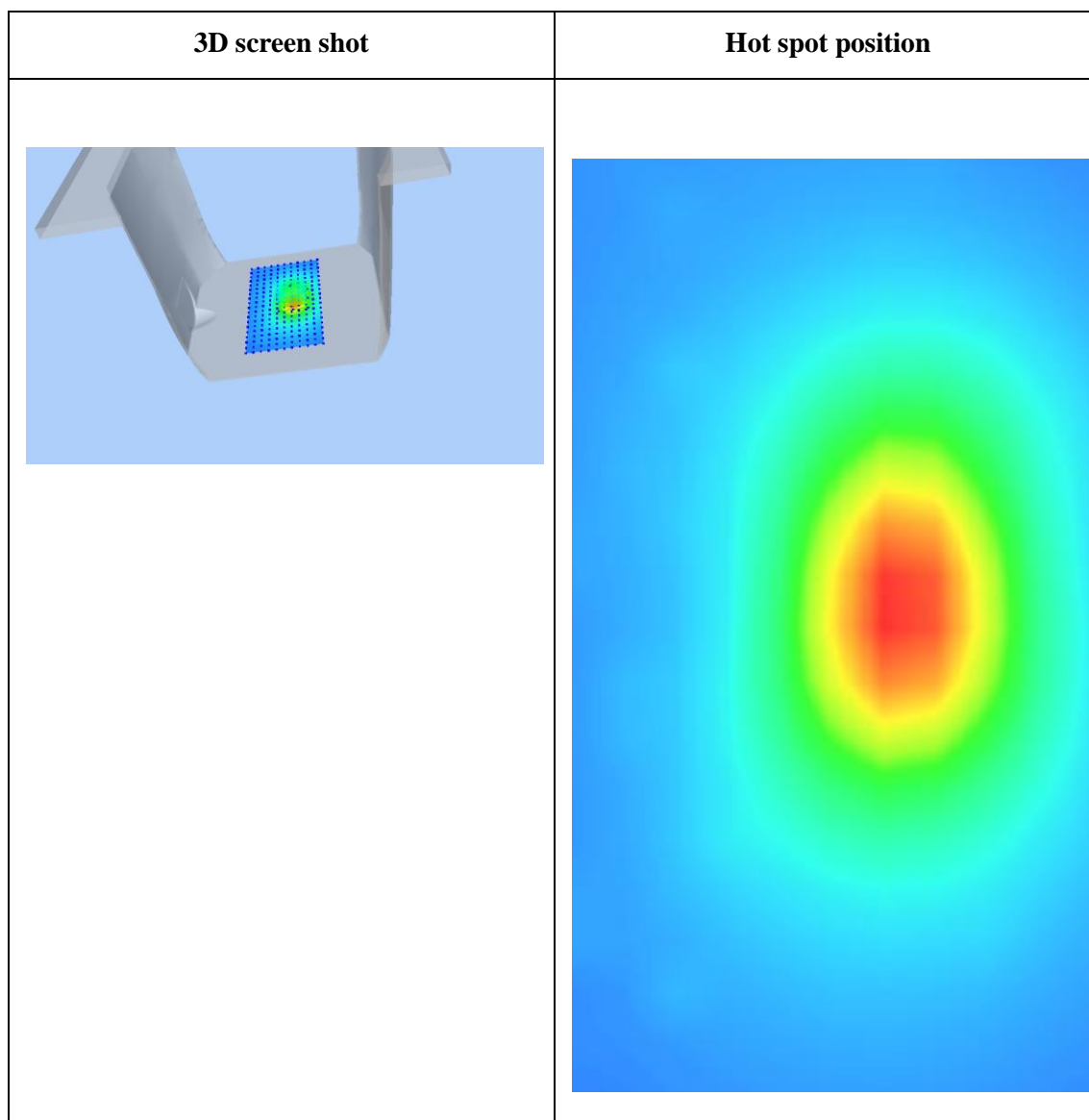
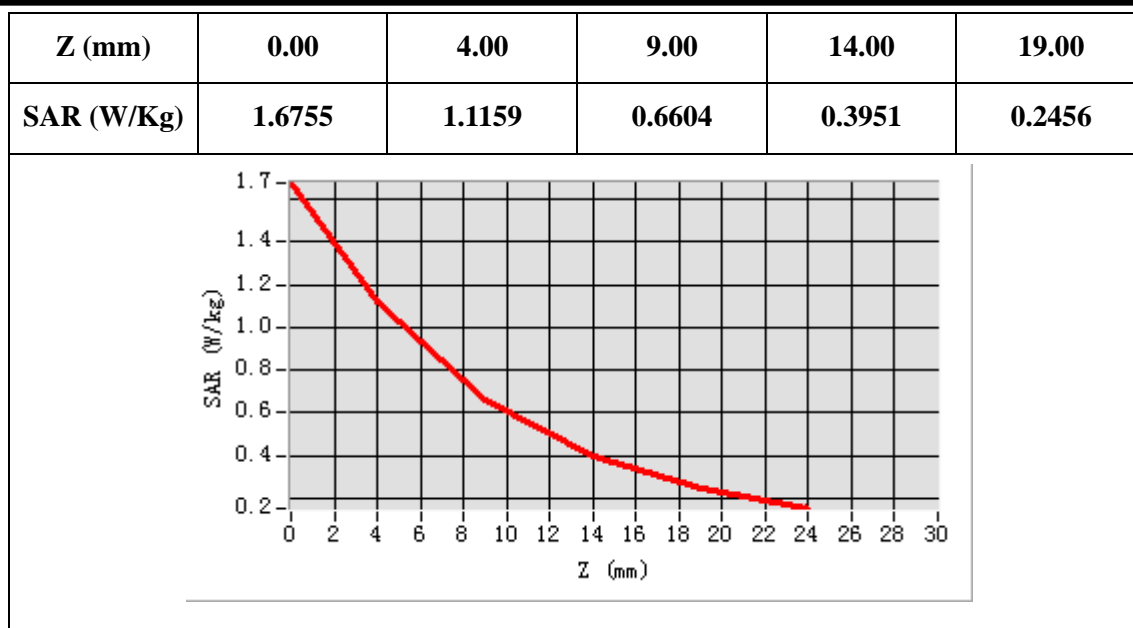
B. SAR Measurement Results

E-Field Probe	SATIMO SN_04/13_EP166
Frequency (MHz)	1907.6
Relative permittivity (real part)	52.87
Relative permittivity (imaginary)	14.21
Conductivity (S/m)	1.50
Variation (%)	0.68
ConvF:	5.43



Maximum location: X=10.00, Y=3.00

SAR 10g (W/Kg)	0.533947
SAR 1g (W/Kg)	1.018423



Plot 11:Wi-Fi 802.11b ,Left Tilt, Middle

Type: Phone measurement (11 points in the volume)

Date of measurement: 25/09/2015

Measurement duration: 7 minutes 21 seconds

Mobile Phone IMEI number: --

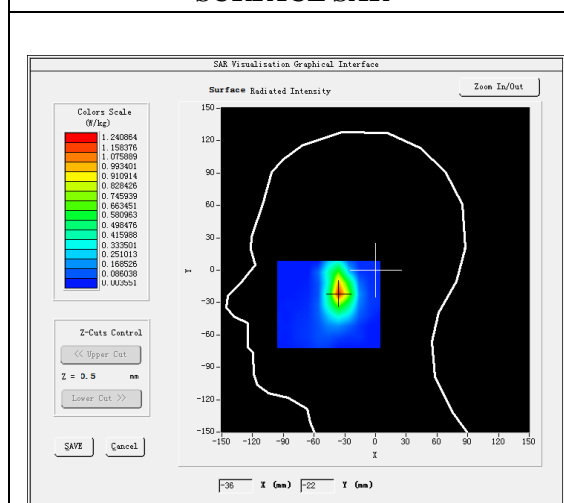
A. Experimental conditions.

Area Scan	dx=8mm dy=8mm
ZoomScan	7x7x8,dx=5mm dy=5mm dz=4mm
Phantom	Left head
Device Position	Tilt
Band	IEEE 802.11b ISM
Channels	6
Signal	DSSS (Crest factor: 1:1)

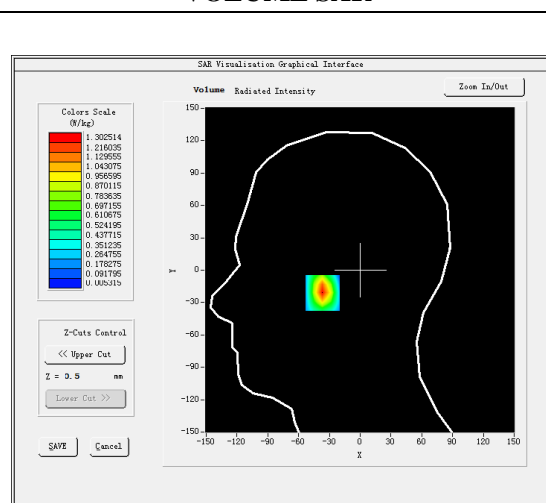
B. SAR Measurement Results

E-Field Probe	SATIMO SN_04/13_EP166
Frequency (MHz)	2437
Relative permittivity (real part)	38.96
Relative permittivity (imaginary part)	13.22
Conductivity (S/m)	1.80
Variation (%)	4.91
ConvF:	4.93

SURFACE SAR

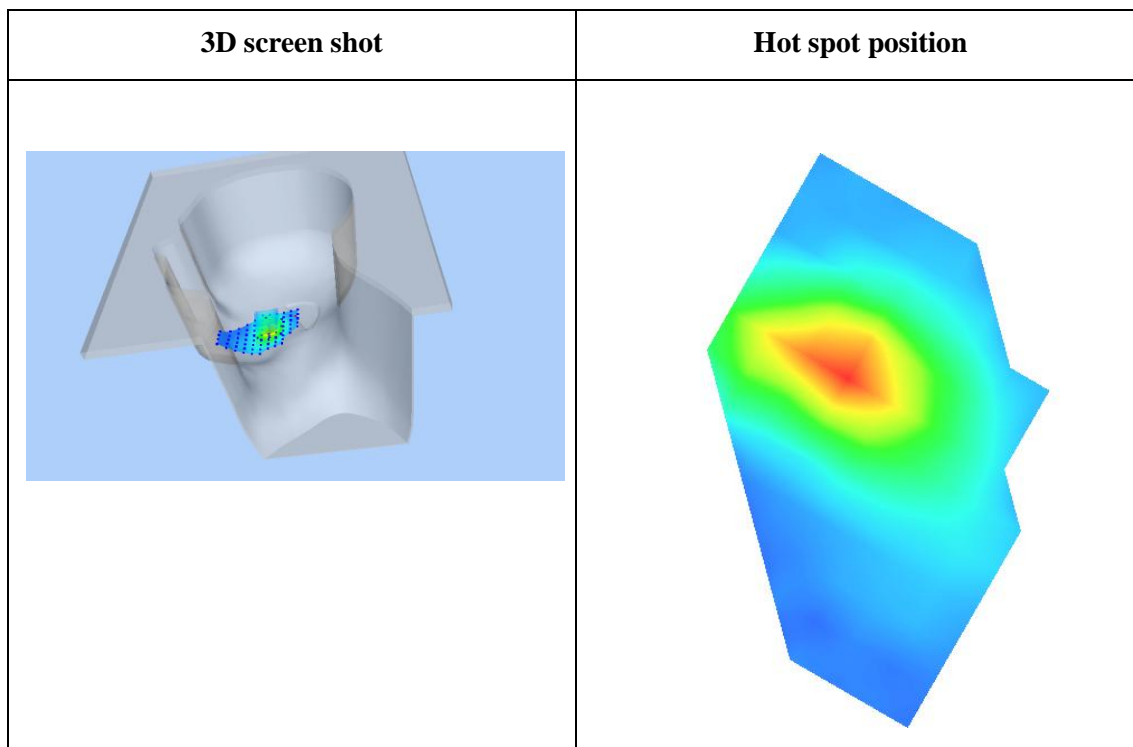
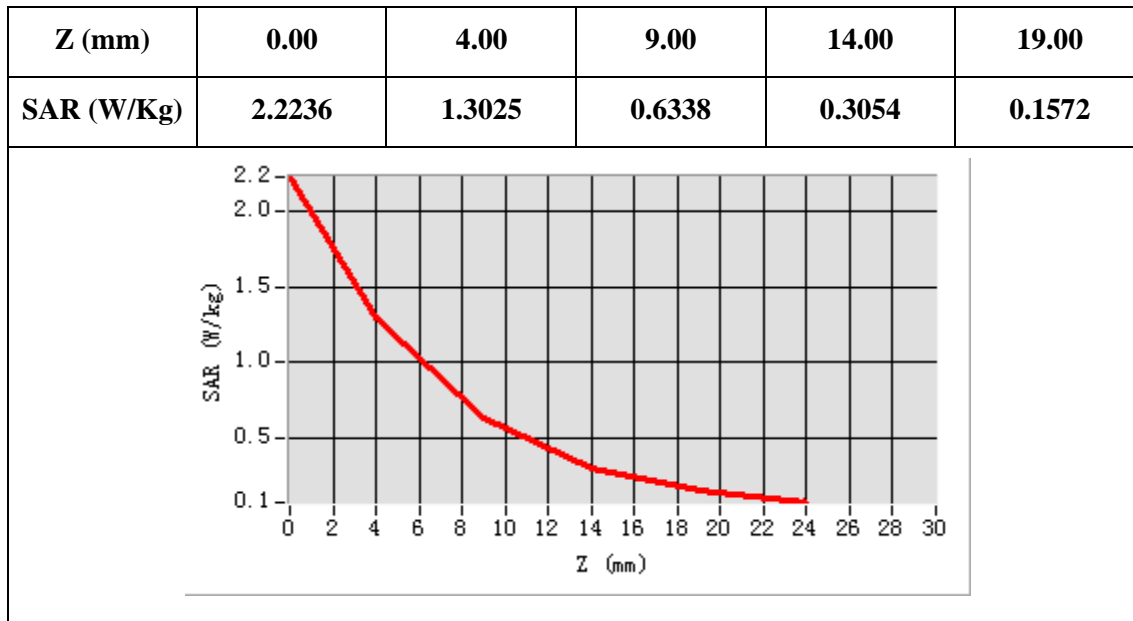


VOLUME SAR



Maximum location: X=-35.00, Y=-21.00

SAR 10g (W/Kg)	0.539060
SAR 1g (W/Kg)	1.107636



Plot 12:Wi-Fi 802.11b , Face, Middle

Type: Phone measurement

Date of measurement: 25/09/2015

Measurement duration: 20 minutes 24 seconds

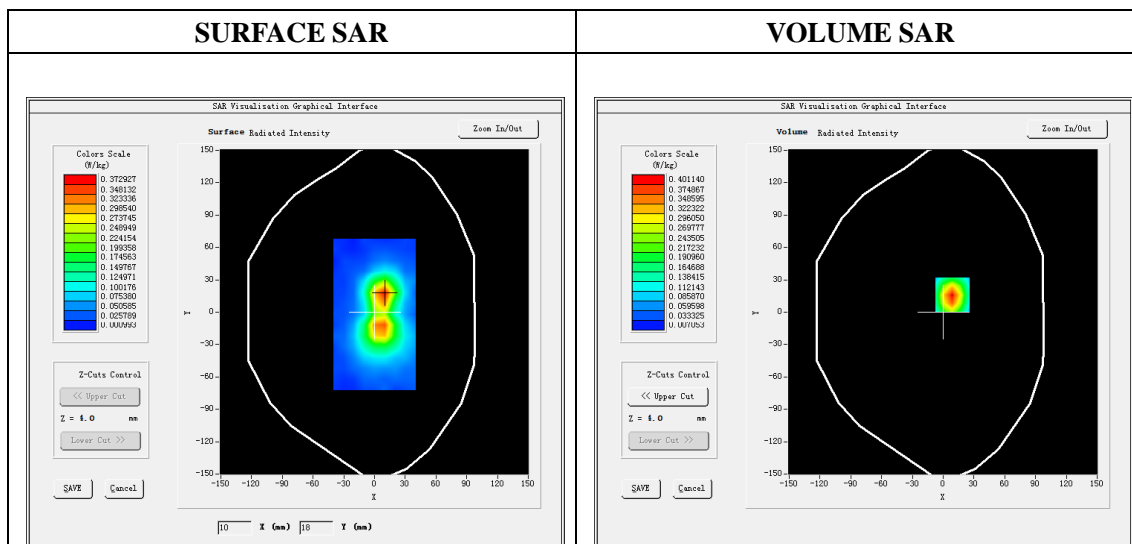
Mobile Phone IMEI number: --

A. Experimental conditions.

Area Scan	dx=8mm dy=8mm
ZoomScan	7x7x8,dx=5mm dy=5mm dz=4mm
Phantom	Validation plane
Device Position	Body
Band	IEEE 802.11b
Channels	6
Signal	DSSS (Crest factor: 1:1)

B. SAR Measurement Results

E-Field Probe	SATIMO SN_04/13_EP166
Frequency (MHz)	2437
Relative permittivity (real part)	52.47
Relative permittivity (imaginary part)	14.25
Conductivity (S/m)	1.94
Variation (%)	0.50
ConvF:	5.09

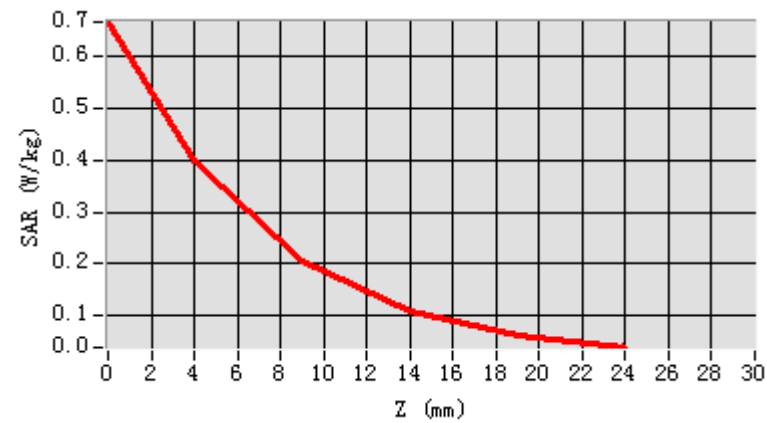


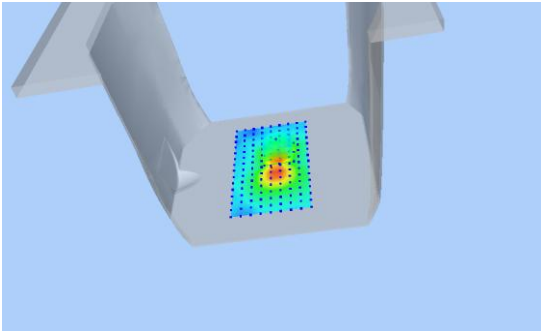
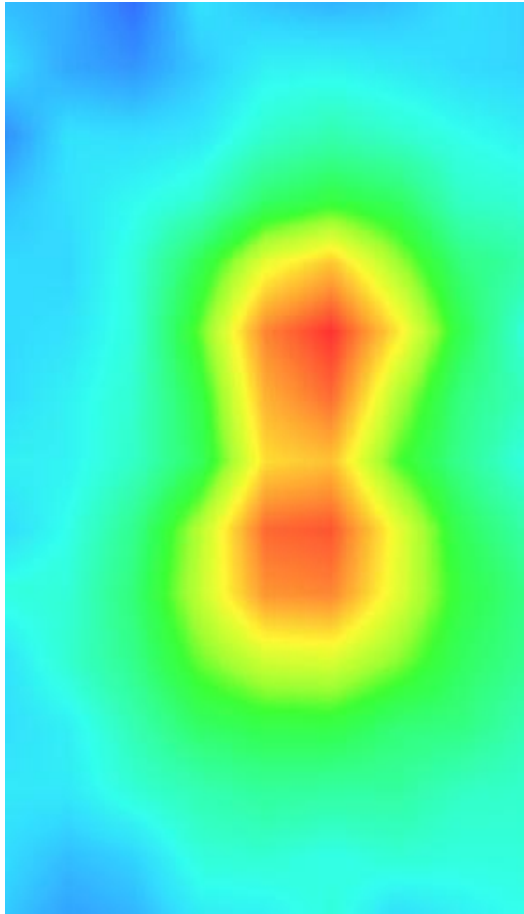
Maximum location: X=9.00, Y=16.00

SAR Peak: 0.67 W/kg

SAR 10g (W/Kg)	0.182499
SAR 1g (W/Kg)	0.372514

Z (mm)	0.00	4.00	9.00	14.00	19.00	0.00	4.00	9.00	14.00
SAR (W/Kg)	0.6676	0.4011	0.2053	0.1076	0.0627	0.6676	0.4011	0.2053	0.1076



3D screen shot	Hot spot position
	

ANNEX E

of

CCIC-SET

CONFORMANCE TEST REPORT FOR

HUMAN EXPOSURE TO ELECTROMAGNETIC FIELDS

SET2015-14025

G31

Type Name: G31

Hardware Version: H01

Software Version: V17_S72B_H01_S001

Calibration Certificate of Probe and Dipoles

This Annex consists of 49 pages

Date of Report: 2015-10-08

Probe Calibration Certificate

**COMOSAR E-Field Probe Calibration Report**




Ref : ACR.227.15.14.SATU.A

**CCIC SOUTHERN ELECTRONIC PRODUCT
TESTING (SHENZHEN) CO., LTD
ELECTRONIC TESTING BUILDING, SHAHE ROAD, XILI
TOWN
SHENZHEN, P.R. CHINA (POST CODE:518055)
SATIMO COMOSAR DOSIMETRIC E-FIELD PROBE
SERIAL NO.: SN 04/13 EP166**

**Calibrated at SATIMO US
2105 Barrett Park Dr. - Kennesaw, GA 30144**

**08/10/2015***Summary:*

This document presents the method and results from an accredited COMOSAR Dosimetric E-Field Probe calibration performed in SATIMO USA using the CALISAR / CALIBAIR test bench, for use with a SATIMO COMOSAR system only. All calibration results are traceable to national metrology institutions.

	<i>Name</i>	<i>Function</i>	<i>Date</i>	<i>Signature</i>
<i>Prepared by :</i>	Jérôme LUC	Product Manager	8/11/2015	
<i>Checked by :</i>	Jérôme LUC	Product Manager	8/11/2015	
<i>Approved by :</i>	Kim RUTKOWSKI	Quality Manager	8/11/2015	

	<i>Customer Name</i>
<i>Distribution :</i>	CCIC SOUTHERN ELECTRONIC PRODUCT TESTING (SHENZHEN) Co., Ltd

<i>Issue</i>	<i>Date</i>	<i>Modifications</i>
A	8/11/2015	Initial release

Page: 2/9

*This document shall not be reproduced, except in full or in part, without the written approval of SATIMO.
The information contained herein is to be used only for the purpose for which it is submitted and is not to
be released in whole or part without written approval of SATIMO.*

TABLE OF CONTENTS

1	Device Under Test	4
2	Product Description	4
2.1	General Information	4
3	Measurement Method	4
3.1	Linearity	4
3.2	Sensitivity	5
3.3	Lower Detection Limit	5
3.4	Isotropy	5
3.5	Boundary Effect	5
4	Measurement Uncertainty	5
5	Calibration Measurement Results	6
5.1	Sensitivity in air	6
5.2	Linearity	7
5.3	Sensitivity in liquid	7
5.4	Isotropy	8
6	List of Equipment	9

Page: 3/9

*This document shall not be reproduced, except in full or in part, without the written approval of SATIMO.
The information contained herein is to be used only for the purpose for which it is submitted and is not to be released in whole or part without written approval of SATIMO.*

1 DEVICE UNDER TEST

Device Under Test	
Device Type	COMOSAR DOSIMETRIC E FIELD PROBE
Manufacturer	Satimo
Model	SSE5
Serial Number	SN 04/13 EP166
Product Condition (new / used)	Used
Frequency Range of Probe	0.7 GHz-3 GHz
Resistance of Three Dipoles at Connector	Dipole 1: $R1=0.231\text{ M}\Omega$ Dipole 2: $R2=0.225\text{ M}\Omega$ Dipole 3: $R3=0.228\text{ M}\Omega$

A yearly calibration interval is recommended.

2 PRODUCT DESCRIPTION

2.1 GENERAL INFORMATION

Satimo's COMOSAR E field Probes are built in accordance to the IEEE 1528, OET 65 Bulletin C and CEI/IEC 62209 standards.



Figure 1 – Satimo COMOSAR Dosimetric E field Dipole

Probe Length	330 mm
Length of Individual Dipoles	4.5 mm
Maximum external diameter	8 mm
Probe Tip External Diameter	5 mm
Distance between dipoles / probe extremity	2.7 mm

3 MEASUREMENT METHOD

The IEEE 1528, OET 65 Bulletin C, CENELEC EN50361 and CEI/IEC 62209 standards provide recommended practices for the probe calibrations, including the performance characteristics of interest and methods by which to assess their affect. All calibrations / measurements performed meet the fore mentioned standards.

3.1 LINEARITY

The evaluation of the linearity was done in free space using the waveguide, performing a power sweep to cover the SAR range 0.01W/kg to 100W/kg.

Page: 4/9

*This document shall not be reproduced, except in full or in part, without the written approval of SATIMO.
The information contained herein is to be used only for the purpose for which it is submitted and is not to be released in whole or part without written approval of SATIMO.*

3.2 SENSITIVITY

The sensitivity factors of the three dipoles were determined using a two step calibration method (air and tissue simulating liquid) using waveguides as outlined in the standards.

3.3 LOWER DETECTION LIMIT

The lower detection limit was assessed using the same measurement set up as used for the linearity measurement. The required lower detection limit is 10 mW/kg.

3.4 ISOTROPY

The axial isotropy was evaluated by exposing the probe to a reference wave from a standard dipole with the dipole mounted under the flat phantom in the test configuration suggested for system validations and checks. The probe was rotated along its main axis from 0 - 360 degrees in 15 degree steps. The hemispherical isotropy is determined by inserting the probe in a thin plastic box filled with tissue-equivalent liquid, with the plastic box illuminated with the fields from a half wave dipole. The dipole is rotated about its axis (0°–180°) in 15° increments. At each step the probe is rotated about its axis (0°–360°).

3.5 BOUNDARY EFFECT

The boundary effect is defined as the deviation between the SAR measured data and the expected exponential decay in the liquid when the probe is oriented normal to the interface. To evaluate this effect, the liquid filled flat phantom is exposed to fields from either a reference dipole or waveguide. With the probe normal to the phantom surface, the peak spatial average SAR is measured and compared to the analytical value at the surface.

4 MEASUREMENT UNCERTAINTY

The guidelines outlined in the IEEE 1528, OET 65 Bulletin C, CENELEC EN50361 and CEI/IEC 62209 standards were followed to generate the measurement uncertainty associated with an E-field probe calibration using the waveguide technique. All uncertainties listed below represent an expanded uncertainty expressed at approximately the 95% confidence level using a coverage factor of $k=2$, traceable to the Internationally Accepted Guides to Measurement Uncertainty.

Uncertainty analysis of the probe calibration in waveguide					
ERROR SOURCES	Uncertainty value (%)	Probability Distribution	Divisor	ci	Standard Uncertainty (%)
Incident or forward power	3.00%	Rectangular	$\sqrt{3}$	1	1.732%
Reflected power	3.00%	Rectangular	$\sqrt{3}$	1	1.732%
Liquid conductivity	5.00%	Rectangular	$\sqrt{3}$	1	2.887%
Liquid permittivity	4.00%	Rectangular	$\sqrt{3}$	1	2.309%
Field homogeneity	3.00%	Rectangular	$\sqrt{3}$	1	1.732%
Field probe positioning	5.00%	Rectangular	$\sqrt{3}$	1	2.887%
Field probe linearity	3.00%	Rectangular	$\sqrt{3}$	1	1.732%

Page: 5/9

*This document shall not be reproduced, except in full or in part, without the written approval of SATIMO.
The information contained herein is to be used only for the purpose for which it is submitted and is not to be released in whole or part without written approval of SATIMO.*