

EXHIBIT 20 – PHOTOS - INTERNAL

Figure E20.1 – Internal Photo – Back Cover / PCB Removed



Figure E20.2 – Internal Photo – Batteries Removed

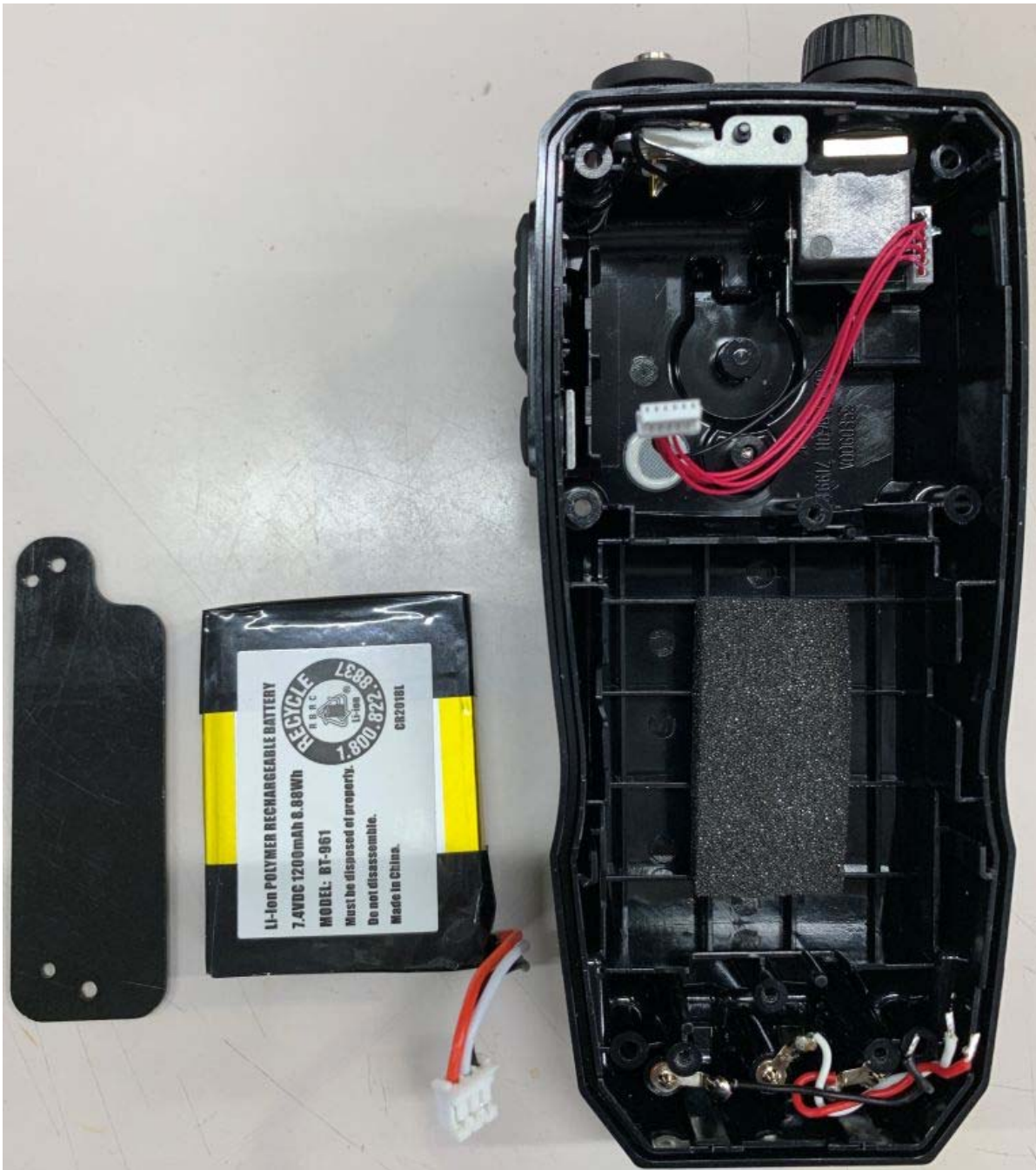


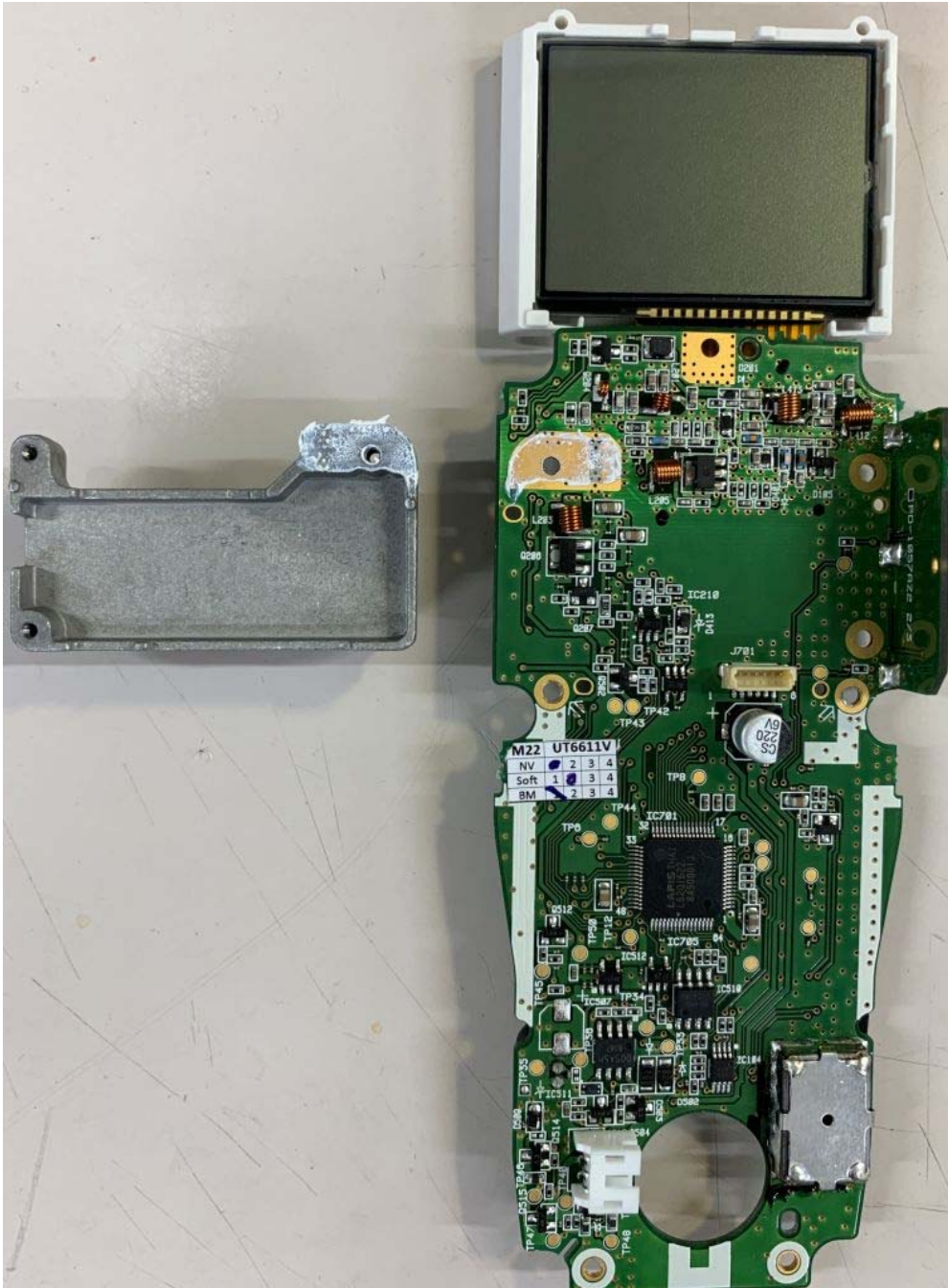
Figure E20.3 – Internal Photo – Front Cover Removed – Main PCB Display Side



Figure E20.4 – Internal Photo – Main PCB Component Side



Figure E20.5 – Internal Photo – Main PCB Component Side – Heat Sink Removed



A detailed photograph of the internal circuit board of a mobile phone. The board is green and populated with numerous electronic components, including integrated circuits (ICs), capacitors, and resistors. A small white label with a table is placed on the board, likely for identification or testing purposes. The table contains the following information:

M22	UT6611V				
NV	2	3	4		
Soft	1	3	4		
BM	2	3	4		

The board features a large central IC labeled 'LAPIS' and several other ICs labeled 'IC701', 'IC705', 'IC706', 'IC707', 'IC708', 'IC709', 'IC710', 'IC711', 'IC712', 'IC713', 'IC714', 'IC715', 'IC716', 'IC717', 'IC718', 'IC719', 'IC720', 'IC721', 'IC722', 'IC723', 'IC724', 'IC725', 'IC726', 'IC727', 'IC728', 'IC729', 'IC730', 'IC731', 'IC732', 'IC733', 'IC734', 'IC735', 'IC736', 'IC737', 'IC738', 'IC739', 'IC740', 'IC741', 'IC742', 'IC743', 'IC744', 'IC745', 'IC746', 'IC747', 'IC748', 'IC749', 'IC750', 'IC751', 'IC752', 'IC753', 'IC754', 'IC755', 'IC756', 'IC757', 'IC758', 'IC759', 'IC760', 'IC761', 'IC762', 'IC763', 'IC764', 'IC765', 'IC766', 'IC767', 'IC768', 'IC769', 'IC770', 'IC771', 'IC772', 'IC773', 'IC774', 'IC775', 'IC776', 'IC777', 'IC778', 'IC779', 'IC780', 'IC781', 'IC782', 'IC783', 'IC784', 'IC785', 'IC786', 'IC787', 'IC788', 'IC789', 'IC790', 'IC791', 'IC792', 'IC793', 'IC794', 'IC795', 'IC796', 'IC797', 'IC798', 'IC799', 'IC800', 'IC801', 'IC802', 'IC803', 'IC804', 'IC805', 'IC806', 'IC807', 'IC808', 'IC809', 'IC810', 'IC811', 'IC812', 'IC813', 'IC814', 'IC815', 'IC816', 'IC817', 'IC818', 'IC819', 'IC820', 'IC821', 'IC822', 'IC823', 'IC824', 'IC825', 'IC826', 'IC827', 'IC828', 'IC829', 'IC830', 'IC831', 'IC832', 'IC833', 'IC834', 'IC835', 'IC836', 'IC837', 'IC838', 'IC839', 'IC840', 'IC841', 'IC842', 'IC843', 'IC844', 'IC845', 'IC846', 'IC847', 'IC848', 'IC849', 'IC850', 'IC851', 'IC852', 'IC853', 'IC854', 'IC855', 'IC856', 'IC857', 'IC858', 'IC859', 'IC860', 'IC861', 'IC862', 'IC863', 'IC864', 'IC865', 'IC866', 'IC867', 'IC868', 'IC869', 'IC870', 'IC871', 'IC872', 'IC873', 'IC874', 'IC875', 'IC876', 'IC877', 'IC878', 'IC879', 'IC880', 'IC881', 'IC882', 'IC883', 'IC884', 'IC885', 'IC886', 'IC887', 'IC888', 'IC889', 'IC890', 'IC891', 'IC892', 'IC893', 'IC894', 'IC895', 'IC896', 'IC897', 'IC898', 'IC899', 'IC900', 'IC901', 'IC902', 'IC903', 'IC904', 'IC905', 'IC906', 'IC907', 'IC908', 'IC909', 'IC910', 'IC911', 'IC912', 'IC913', 'IC914', 'IC915', 'IC916', 'IC917', 'IC918', 'IC919', 'IC920', 'IC921', 'IC922', 'IC923', 'IC924', 'IC925', 'IC926', 'IC927', 'IC928', 'IC929', 'IC930', 'IC931', 'IC932', 'IC933', 'IC934', 'IC935', 'IC936', 'IC937', 'IC938', 'IC939', 'IC940', 'IC941', 'IC942', 'IC943', 'IC944', 'IC945', 'IC946', 'IC947', 'IC948', 'IC949', 'IC950', 'IC951', 'IC952', 'IC953', 'IC954', 'IC955', 'IC956', 'IC957', 'IC958', 'IC959', 'IC960', 'IC961', 'IC962', 'IC963', 'IC964', 'IC965', 'IC966', 'IC967', 'IC968', 'IC969', 'IC970', 'IC971', 'IC972', 'IC973', 'IC974', 'IC975', 'IC976', 'IC977', 'IC978', 'IC979', 'IC980', 'IC981', 'IC982', 'IC983', 'IC984', 'IC985', 'IC986', 'IC987', 'IC988', 'IC989', 'IC990', 'IC991', 'IC992', 'IC993', 'IC994', 'IC995', 'IC996', 'IC997', 'IC998', 'IC999', 'IC1000', 'IC1001', 'IC1002', 'IC1003', 'IC1004', 'IC1005', 'IC1006', 'IC1007', 'IC1008', 'IC1009', 'IC1010', 'IC1011', 'IC1012', 'IC1013', 'IC1014', 'IC1015', 'IC1016', 'IC1017', 'IC1018', 'IC1019', 'IC1020', 'IC1021', 'IC1022', 'IC1023', 'IC1024', 'IC1025', 'IC1026', 'IC1027', 'IC1028', 'IC1029', 'IC1030', 'IC1031', 'IC1032', 'IC1033', 'IC1034', 'IC1035', 'IC1036', 'IC1037', 'IC1038', 'IC1039', 'IC1040', 'IC1041', 'IC1042', 'IC1043', 'IC1044', 'IC1045', 'IC1046', 'IC1047', 'IC1048', 'IC1049', 'IC1050', 'IC1051', 'IC1052', 'IC1053', 'IC1054', 'IC1055', 'IC1056', 'IC1057', 'IC1058', 'IC1059', 'IC1060', 'IC1061', 'IC1062', 'IC1063', 'IC1064', 'IC1065', 'IC1066', 'IC1067', 'IC1068', 'IC1069', 'IC1070', 'IC1071', 'IC1072', 'IC1073', 'IC1074', 'IC1075', 'IC1076', 'IC1077', 'IC1078', 'IC1079', 'IC1080', 'IC1081', 'IC1082', 'IC1083', 'IC1084', 'IC1085', 'IC1086', 'IC1087', 'IC1088', 'IC1089', 'IC1090', 'IC1091', 'IC1092', 'IC1093', 'IC1094', 'IC1095', 'IC1096', 'IC1097', 'IC1098', 'IC1099', 'IC1100', 'IC1101', 'IC1102', 'IC1103', 'IC1104', 'IC1105', 'IC1106', 'IC1107', 'IC1108', 'IC1109', 'IC1110', 'IC1111', 'IC1112', 'IC1113', 'IC1114', 'IC1115', 'IC1116', 'IC1117', 'IC1118', 'IC1119', 'IC1120', 'IC1121', 'IC1122', 'IC1123', 'IC1124', 'IC1125', 'IC1126', 'IC1127', 'IC1128', 'IC1129', 'IC1130', 'IC1131', 'IC1132', 'IC1133', 'IC1134', 'IC1135', 'IC1136', 'IC1137', 'IC1138', 'IC1139', 'IC1140', 'IC1141', 'IC1142', 'IC1143', 'IC1144', 'IC1145', 'IC1146', 'IC1147', 'IC1148', 'IC1149', 'IC1150', 'IC1151', 'IC1152', 'IC1153', 'IC1154', 'IC1155', 'IC1156', 'IC1157', 'IC1158', 'IC1159', 'IC1160', 'IC1161', 'IC1162', 'IC1163', 'IC1164', 'IC1165', 'IC1166', 'IC1167', 'IC1168', 'IC1169', 'IC1170', 'IC1171', 'IC1172', 'IC1173', 'IC1174', 'IC1175', 'IC1176', 'IC1177', 'IC1178', 'IC1179', 'IC1180', 'IC1181', 'IC1182', 'IC1183', 'IC1184', 'IC1185', 'IC1186', 'IC1187', 'IC1188', 'IC1189', 'IC1190', 'IC1191', 'IC1192', 'IC1193', 'IC1194', 'IC1195', 'IC1196', 'IC1197', 'IC1198', 'IC1199', 'IC1200', 'IC1201', 'IC1202', 'IC1203', 'IC1204', 'IC1205', 'IC1206', 'IC1207', 'IC1208', 'IC1209', 'IC1210', 'IC1211', 'IC1212', 'IC1213', 'IC1214', 'IC1215', 'IC1216', 'IC1217', 'IC1218', 'IC1219', 'IC1220', 'IC1221', 'IC1222', 'IC1223', 'IC1224', 'IC1225', 'IC1226', 'IC1227', 'IC1228', 'IC1229', 'IC1230', 'IC1231', 'IC1232', 'IC1233', 'IC1234', 'IC1235', 'IC1236', 'IC1237', 'IC1238', 'IC1239', 'IC1240', 'IC1241', 'IC1242', 'IC1243', 'IC1244', 'IC1245', 'IC1246', 'IC1247', 'IC1248', 'IC1249', 'IC1250', 'IC1251', 'IC1252', 'IC1253', 'IC1254', 'IC1255', 'IC1256', 'IC1257', 'IC1258', 'IC1259', 'IC1260', 'IC1261', 'IC1262', 'IC1263', 'IC1264', 'IC1265', 'IC1266', 'IC1267', 'IC1268', 'IC1269', 'IC1270', 'IC1271', 'IC1272', 'IC1273', 'IC1274', 'IC1275', 'IC1276', 'IC1277', 'IC1278', 'IC1279', 'IC1280', 'IC1281', 'IC1282', '

Figure E20.7 – Internal Photo – Main PCB Display Side

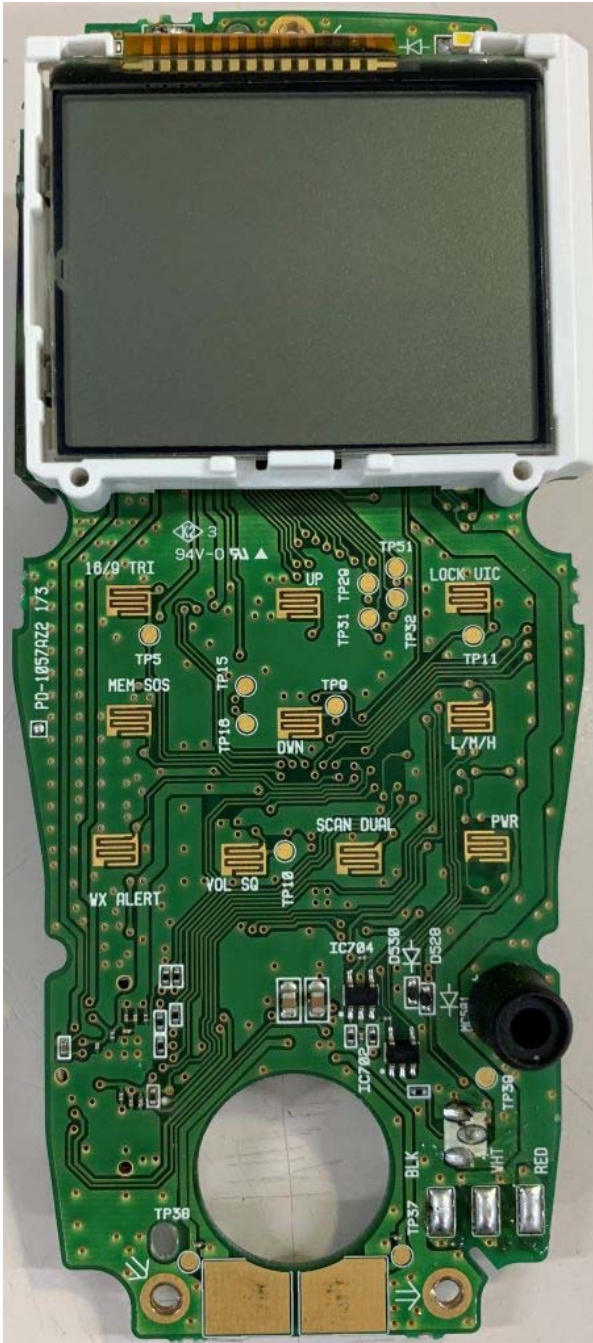


Figure E20.8 – Internal Photo – Main PCB Display Side – Display Removed

