

DOORBELL CAMERA

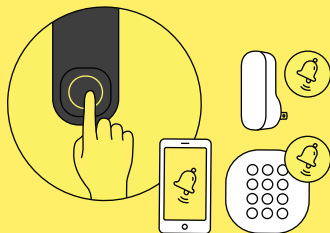
The Doorbell Camera sends a notification and a photo-stitch when it senses motion or when the doorbell button is pressed.

Your Chime will also sound a tone to let you know someone is at the door.



GET STARTED

1. Download the iOS or Android "Kangaroo Security" app and have your WiFi password handy.
2. Turn on your phone's  bluetooth, you can turn it off after setup. (To turn it on, go to Settings on your phone, select and turn it on.)
3. Follow the step-by-step instructions in the app.

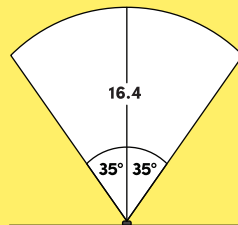


DING DONG!

Your Doorbell Camera automatically connects to your phone, the Kangaroo Chime and the Siren + Keypad if you have one in the home.

When the doorbell is pressed, the Chime and Siren + Keypad will sound a tone and a notification with a photo-stitch will be sent to your phone.

The Chime and Siren + Keypad also help to ensure your doorbell has a strong wifi connection, place these products as close to the doorbell as possible.

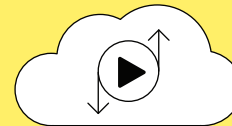


MOTION DETECTION

Your Doorbell Camera has a 60° viewing angle and monitors a distance of up to a 16.4ft (5m), in an arc 70° left and right.

When the doorbell detects motion, a notification with a photo-stitch will be sent to your phone.

Motion detection sensitivity and distance are customizable in the app. If the doorbell faces a busy street, try using the lowest setting to avoid false alarms.



CLOUD STORAGE

All cameras come with a basic level of cloud storage, this is what allows you to view the photos.

To access and store photos for longer you can increase your amount of cloud storage by signing up for the Kangaroo Complete Plan or Porch Protection Plan.

The Kangaroo Complete Plan and Porch Protection Plan also come with tons of other premium features. Check them out at heykangaroo.com/pricing.



Call

800-371-0097



Chat

heykangaroo.com/support



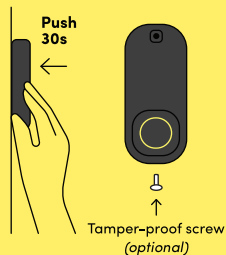
Email

support@heykangaroo.com



FAQ

heykangaroo.com/support

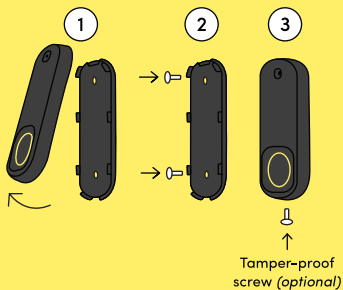


PEEL-&-STICK MOUNTING

Select a spot 3'9" – 4'7" from the ground.

First use a light touch and make sure your Doorbell Camera is in the spot you want, then press and hold firmly for 30 seconds.

Optional: Screw the tamper-proof screw into the bottom of the doorbell for extra security.

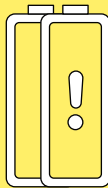


SCREW MOUNTING

Select a spot 3'9"–4'7" from the ground.

Pop off the front cover of the doorbell. (Open from the bottom.) Screw the back cover onto the surface using the two included wall mount screws, then pop the cover back on.

Optional: Screw the tamper-proof screw into the bottom of the doorbell for extra security.



BATTERIES

Your app will give you a heads up when your battery life is low.

To change them, first, if you are using the tamper-proof screw, unscrew it from the bottom of the doorbell. Then pop off the front cover by opening from the bottom.

Any AA batteries will do the trick, but we especially recommend lithium AA.

The Kangaroo Chime and Siren + Keypad extend the Doorbell Camera's battery life when they are connected to your wifi and plugged in near the doorbell.

Doorbell Camera Specs

Size: 4.57" x 1.97" x 0.71" (116mm x 50mm x 18mm)
Weight: 3.88oz (110g) with batteries
Mounting Method: Peel-and-stick or screw mount
Use Location: Indoor and outdoor, weather resistant
Power Source: 3 AA batteries
Operating Temperature: -4°F to 122°F (-22°C to 50°C)
Operating Humidity: <90% at 104°F (40°C)
Motion Detection Range: Adjustable up to 16.4ft (5m)
Night Vision: 2 infrared LEDs (850nm), illuminates up to 16.4ft (5m)
Camera Viewing Angle: 60°
Motion Field of View: 70° horizontal

Chime Specs

Size: 2.95" x 1.42" x 0.86" (75mm x 36mm x 22mm)
Weight: 1.41oz (40g)
Mounting Method: Plug in the outlet
User Location: Indoor use only
Operating Temperature: 32°F to 122°F (0°C to 50°C)
Speaker: 70dB at 1.64ft. (0.5m)
Power Source: AC power, 100–240V, 50–60Hz
Works with Kangaroo Doorbell Camera

System Requirements

WiFi 802.11 b/g/n, 2.4GHz (WEP, WPA, or WPA2 encryption) compatible router. Mobile device with iOS 10.0 and above | Android 5.0 and above. Active internet and cellular connections are required. Alarm monitoring service requires a Kangaroo Security subscription.

Troubleshooting

- Ensure the device's batteries are working.
- Make sure the yellow battery tab is removed and the batteries are aligned correctly.
- If you're having trouble pairing, try resetting.

Reset

Remove the front cover of the doorbell, then press the doorbell button for 15s.

1-year worry-free warranty

Learn more [heykangaroo.com/warranty](https://www.heykangaroo.com/warranty)

FCC Statement:

This device complies with Part 15 of the FCC Rules. Operation is subject to the following two conditions: (1) This device may not cause harmful interference, and (2) This device must accept any interference received, including interference that may cause undesired operation.

Warning: Changes or modifications not expressly approved by the party responsible for compliance could void the user's authority to operate the equipment.

NOTE: This equipment has been tested and found to comply with the limits for a Class B digital device, pursuant to Part 15 of the FCC Rules. These limits are designed to provide reasonable protection against harmful interference in a residential installation. This equipment generates uses and can radiate radio frequency energy and, if not installed and used in accordance with the instructions, may cause harmful interference to radio communications. However, there is no guarantee that interference will not occur in a particular installation. If this equipment does cause harmful interference to radio or television reception, which can be determined by turning the equipment off and on, the user is encouraged to try to correct the interference by one or more of the following measures:

- Reorient or relocate the receiving antenna.
- Increase the separation between the equipment and receiver.
- Connect the equipment into an outlet on a circuit different from that to which the receiver is connected.
- Consult the dealer or an experienced radio/TV technician for help.

FCC Radiation Exposure Statement:

This equipment complies with FCC radiation exposure limits set forth for an uncontrolled environment. This equipment should be installed and operated with minimum distance 20cm between the radiator and your body.

Doorbell Camera

+ Chime Manual

