



DEEBOT ■■30C

Instruction Manual



Instruction ManualEN | P03

Manuel d’instructions FR-CA | P31

Manual de instrucciones..... ES-LA | P61

IMPORTANT SAFETY INSTRUCTIONS

IMPORTANT SAFETY INSTRUCTIONS

READ ALL INSTRUCTIONS BEFORE

USING THIS APPLIANCE.

When using an electrical appliance, basic precautions should always be followed, including the following:

WARNING: Read all safety warnings and instructions.

Failure to follow the warnings and instructions may result in electric shock, fire, or serious injury.

1. Do not allow to be used as a toy. Close attention is necessary when used by or near children.
2. Clear the area to be cleaned. Remove power cords and small objects from the floor that could entangle the Appliance. Tuck rug fringe under the rug base, and lift items such as curtains and tablecloths off the floor.
3. If there is a drop off in the cleaning area due to a step or stairs, you should operate the Appliance to ensure that it can detect the step without falling over the edge. It may become necessary to place a physical barrier at the edge to keep the unit from falling. Make sure the physical barrier is not a trip hazard.
4. Only use as described in this manual. Only

use attachments recommended or sold by the manufacturer.

5. Do not handle plug or appliance with wet hands.
6. Non-rechargeable batteries are prohibited.
7. Do not use without dust bin and/or filters in place.
8. Do not operate the vacuum in an area where there are lit candles or fragile objects on the floor to be cleaned.
9. Do not use and store in extremely hot or cold environments (below -5°C /23°F or above 40°C/104°F). Please charge the robot in temperature above 0°C/32°F and below 40°C/104°F.
10. Keep hair, loose clothing, fingers, and all parts of body away from any openings and moving parts.
11. Do not operate the Appliance in a room where an infant or child is sleeping.
12. For INDOOR use ONLY. Do not use the Appliance in outdoor, commercial or industrial environments. Do not use Appliance on wet surfaces or surfaces with standing water.
13. Do not allow the Appliance to pick up large objects like stones, large pieces of paper, or any item that may clog the Appliance.
14. Do not use to pick up flammable or combustible

materials such as gasoline, printer, or copier toner, or use in areas where they may be present.

15. Do not pick up anything that is burning or smoking, such as cigarettes, matches, hot ashes, or anything that could cause a fire.
16. Do not put any object into openings. Do not use with any opening blocked; keep free of dust, lint, hair, and anything that may reduce air flow.
17. Take care not to damage the power cord. Do not pull on or carry the Appliance or Docking Station by the power cord, use the power cord as a handle, close a door on the power cord, or pull power cord around sharp edges or corners. Do not run Appliance and Docking station over the power cord. Keep power cord away from hot surfaces. Do not unplug by pulling on cord. To unplug, grasp the plug, not the cord.
18. If the power cord is damaged, it must be replaced by the manufacturer or its service agent in order to avoid a hazard.
19. Do not use with a damaged power cord or plug. Do not use the Appliance or Docking Station if it is not working properly, has been dropped, damaged, left outdoors, or come in contact with water. It must be repaired by the manufacturer or its service agent in order to avoid a hazard.
20. Turn OFF the power switch before cleaning or maintaining the Appliance. Turn off all controls before unplugging. Always turn off this appliance before connecting or disconnecting motorized nozzle.
21. Remove the Appliance from the Docking Station, and turn OFF the power switch to the Appliance before removing the battery for disposal of the Appliance.
22. The battery must be removed and discarded according to local laws and regulations before disposal of the Appliance.
23. Please dispose of used batteries according to local laws and regulations.
24. Do not incinerate the Appliance even if it is severely damaged. The batteries can explode in a fire.
25. When not using the Docking Station, unplug from outlet when not in use and before servicing.
26. The Appliance must be used in accordance with the directions in this Instruction Manual. Ecovacs Home Service Robotics cannot be held liable or responsible for any damages or injuries caused by improper use.

27. Prevent unintentional starting. Ensure the switch is in the off position before connecting to battery pack, picking up or carrying the appliance.
28. When battery pack is not in use, keep it away from other metal objects, like paper clips, coins, keys, nails, screws, or other small metal objects, that can make a connection from one terminal to another. Shorting the battery terminals together may cause burns or a fire.
29. Under abusive conditions, liquid may be ejected from the battery; avoid contact. If contact accidentally occurs, flush with water. If liquid contacts eyes, additionally seek medical help. Liquid ejected from the battery may cause irritation or burns.
30. Do not use a battery pack or appliance that is damaged or modified. Damaged or modified batteries may exhibit unpredictable behavior resulting in fire, explosion, or risk of injury.
31. Do not expose a battery pack or appliance to fire or excessive temperature. Exposure to fire or temperature above 130°C may cause explosion. The temperature of 130°C can be replaced by the temperature of 265°F.
32. Follow all charging instructions and do not charge the battery pack or appliance outside of the temperature range specified in the instructions. Charging improperly or at temperatures outside of the specified range may damage the battery and increase the risk of fire.
33. Have servicing performed by a qualified repair person using only identical replacement parts. This will ensure that the safety of the product is maintained.
34. Do not modify or attempt to repair the appliance or the battery pack (as applicable) except as indicated in the instructions for use and care.
35. Place the cords from other appliances out of the area to be cleaned.
36. Do not operate the vacuum in a room that has lit candles on furniture that the vacuum may accidentally hit or bump into.
37. Do not allow children to sit on the vacuum.
38. Use only as described in this manual. Use only manufacturer's recommended attachments.
39. Recharge only with the charger specified by the manufacturer. A charger that is suitable for one type of battery pack may create a risk of fire when used with another battery pack.
40. Use appliances only with specifically designated battery packs. Use of any other battery packs may create a risk of injury and fire.

41. The robot contains batteries that are only replaceable by skilled persons. To replace the robot's battery, please contact Customer Service.
42. If the robot will not be used for a long time, fully charge the robot and power OFF for storage and unplug the Docking Station.
43. To Reduce The Risk Of Electric Shock – Do not use on wet surfaces. Do not expose to rain. Store indoors.
44. To Reduce The Risk Of Injury From Moving Parts – Unplug Before Servicing.
45. Risk Of Injury. Brush May Start Unexpectedly. Unplug Before Cleaning or Servicing.
46. To reduce the risk of injury, user must read the Instruction Manual.
47. To Reduce The Risk Of Electric Shock – Do not use outdoors or on wet surfaces.
48. Please make sure your power supply voltage matches the power voltage marked on the Docking Station.
49. Do not use the Docking Station if it is damaged.
50. The plug must be removed from the receptacle before cleaning or maintaining the Docking Station.
51. Power Switch: "I"=ON, "O"=OFF.
52. Connect to a properly grounded outlet only. See Grounding Instructions.
53. Turn OFF the Power Switch before removing the Dust Bin.

==	Direct current
~	Alternating current

This Device Complies with DHHS Radiation Rules, 21CFR Chapter 1, Subchapter J.

Federal Communications Commission (FCC) Interference Statement

NOTE: This equipment has been tested and found to comply with the limits for a Class B digital device, pursuant to Part 15 of the FCC Rules.

These limits are designed to provide reasonable protection against harmful interference in a residential installation. This equipment generates, uses, and can radiate radio frequency energy and, if not installed and used in accordance with the instructions, may cause harmful interference to radio communications.

However, there is no guarantee that interference will not occur in a particular installation. If this equipment does cause harmful interference to radio or television reception, which can be determined by turning the equipment off and on, the user is encouraged to try to correct the interference by one or more of the following measures:

- Reorient or relocate the receiving antenna.

- Increase the separation between the equipment and receiver.
- Connect the equipment into an outlet on a circuit different from that to which the receiver is connected.
- Consult the dealer or an experienced radio/TV technician for help.

This device complies with Part 15 of the FCC Rules. Operation is subject to the following two conditions:

- (1) This device may not cause harmful interference, and
- (2) this device must accept any interference received, including interference that may cause undesired operation.

Caution: Changes or modifications to this unit not expressly approved by the party responsible for compliance could void the user's authority to operate the equipment.

This device contains licence-exempt transmitter(s)/ receiver(s) that comply with Innovation, Science and Economic Development Canada's licence-exempt RSS(s). Operation is subject to the following two conditions:

- (1) This device may not cause interference.
- (2) This device must accept any interference, including interference that may cause undesired operation of the device.

RF exposure warning

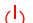
This equipment complies with FCC radiation exposure limits set forth for an uncontrolled environment.

This equipment must be installed and operated in accordance with provided instructions and the antenna(s) used for this transmitter must be installed to provide a separation distance of at least 20 cm from all persons and must not be collocated or operating in conjunction with any other antenna or transmitter.

MPE caution (for mobile device under Part 15.247 device)

To satisfy FCC & ICRF exposure requirements, a separation distance of 20 cm or more should be maintained between the antenna of this device and persons during device operation.

To ensure compliance, operations at closer than this distance is not recommended.

To disable the Wi-Fi module on DEEBOT, follow these steps: power on the robot, then place it on the OMNI Station, ensuring that the Charging Contacts on DEEBOT and the Station are properly connected, and press and hold the  for 20 s until you hear beeps.

To enable the Wi-Fi module on DEEBOT, please restart the robot. Additionally unplug and plug in the Station.

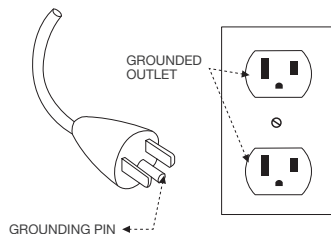
SAVE THESE INSTRUCTIONS

GROUNDING INSTRUCTIONS

This appliance must be grounded. If it should malfunction or breakdown, grounding provides a path of least resistance for electric current to reduce the risk of electric shock. This appliance is equipped with a cord having an equipment-grounding conductor and grounding plug. The plug must be inserted into an appropriate outlet that is properly installed and grounded in accordance with all local codes and ordinances.

WARNING – Improper connection of the equipment-grounding conductor can result in a risk of electric shock. Check with a qualified electrician or service person if you are in doubt as to whether the outlet is properly grounded. Do not modify the plug provided with the appliance – if it will not fit the outlet, have a proper outlet installed by a qualified electrician.

This appliance is for use on a nominal 120 V circuit and has a grounding attachment plug that looks like the plug illustrated as the following photo. Make sure that the appliance is connected to an outlet having the same configuration as the plug. No adaptor should be used with this appliance.



For INDOOR household use ONLY.

This device contains licence-exempt transmitter(s)/ receiver(s) that comply with Innovation, Science and Economic Development Canada's licence-exempt RSS(s). Operation is subject to the following two conditions:

- (1) This device may not cause interference.
- (2) This device must accept any interference, including interference that may cause undesired operation of the device.

To satisfy FCC&ICRF exposure requirements, a separation distance of 20 cm or more should be maintained between the antenna of this device and persons during device operation.

To ensure compliance, operations at closer than this distance is not recommended.

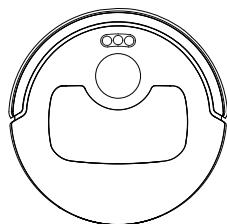
Device Update

Typically, some devices are updated bi-monthly, but not always so specific.

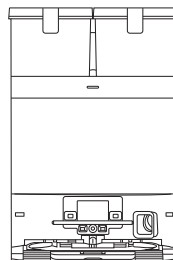
Some devices, especially those that went on sale more than three years ago, will only be updated if a critical vulnerability is found and fixed.

PACKAGE COMPONENTS

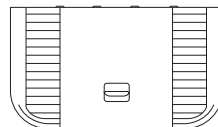
1 PACKAGE CONTENTS



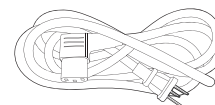
Robot



OMNI Station



Base



Power Cord



Side Brush



Instruction Manual

* Figures in this manual are for reference only and may differ from the appliance. Product design and specifications are subject to changes without notice.

2 PRODUCT DIAGRAM

Robot

Navigation
Module

Obstacle Avoidance
Module

Top Cover

Buttons on the
robot.

Bumper

Buttons



Press: Exit/Return to the station
(Robot not in the station)

Press and hold: Self-Cleaning



Press: Toggle Start/Pause/Continue Press and hold: Power on/Power off



Press: Start/End spot cleaning Press and hold: Activate/Deactivate the child lock

Inside the Robot (Under the Top Cover)

RESET Button

Network Setup: Press the RESET button, and you will hear a voice prompt to connect the robot with the APP.

Restore Default Settings: Press the RESET button and hold for 5 s. After you hear the voice prompt, the startup music will play, and the robot will be restored to the default settings.

Wi-Fi Status Indicator/
RESET Button

Charging Contacts

Water Filling Port

Edge Sensor

Bottom Back View

Anti-drop Sensors

Carpet Detection
Sensor

Roller Brush

Mounting Slots
for Mopping Pad
Assembly

Universal Wheel

Side Brush

Brush Release
Button

Driving Wheels

Dust Bin

Filter

Dust Disposal Port

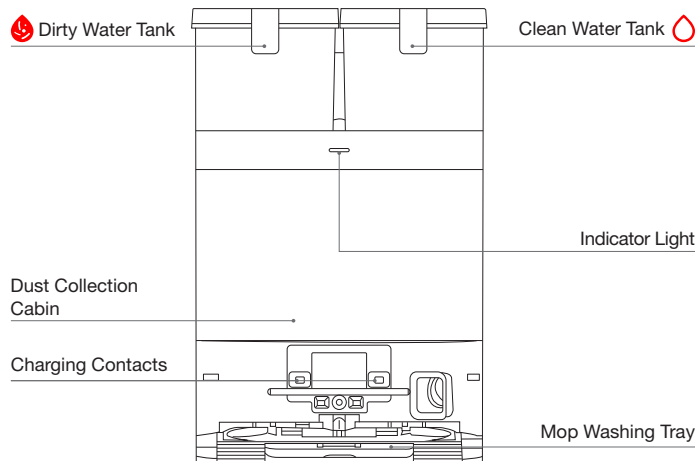
Release Button

Mopping Pad Assembly

Mopping Pad Plates

Washable Mopping Pads

OMNI Station

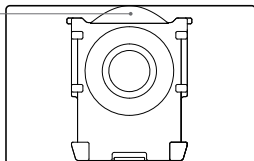


Note:

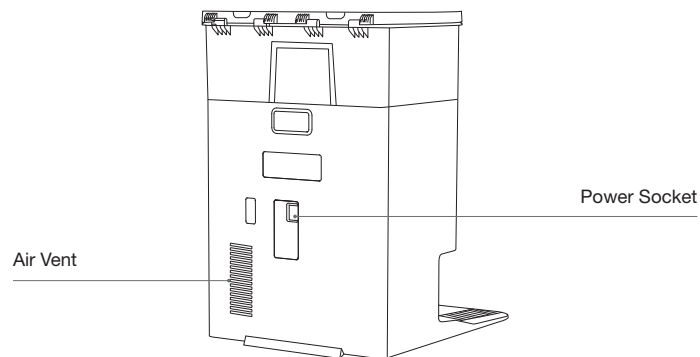
- Flashing Red: Please check the ECOVACS HOME App for the reason.
- If the robot fails to charge, please wipe charging contacts with a clean and dry cloth.

Dust Bag

Dust Bag Handle



OMNI Station (Back)



3 Indicator Light

	Light Effect	State
Robot	Breathing White	Charging
	Solid White	Fully Charged/Running
	White Light Flashes 3 Times	Power Button Triggered, Task Starts/Pauses/Continues
	Solid Red	Low Battery
	Flashing Red	Alarm
Station	Solid White	Standby/Running
	Flashing Red	Malfunction
	Goes Out	Power Outage/ Deep Sleep Mode

4 Sensors Overview

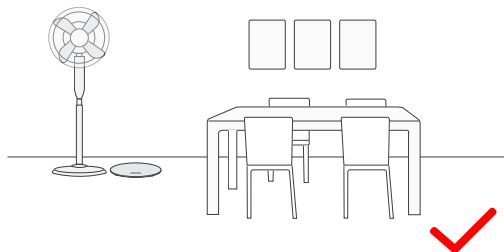
Name	Functional Description
Navigation Module	Laser Ranging is applied to measure the distance between the robot and surrounding objects based on the time difference of reflection, allowing the module to map against the objects around while the robot is moving. The detection range is 8 m.
Obstacle Avoidance Module	Laser Ranging and triangulation are used to measure the distance between the robot and surrounding obstacles. The sensor emits laser beams and receives the reflected light from obstacles ahead. When an obstacle is detected within close range, the robot automatically turns to avoid it. The detection range is 0.3 meters.
Anti-drop Sensors	With Infrared Ranging, the distance between the robot's bottom and the ground is detected by the infrared sensors at the bottom. The robot will not move forward when there are stairs in front (such as when the height of the white surface is 55 mm or more, or the height of the black surface is 30 mm or more) and the identified exceeds the preset one, enabling the Anti-drop function.
Carpet Detection Sensor	The sensor emits 300 kHz ultrasound, which energy will be absorbed by the carpet, causing the echoed energy to be lower than the threshold. The robot thereby detects the carpet's presence. In the ECOVACS laboratory, more than 50 types of carpets available on the market are identified.
Anti-collision Sensor	With the principle of the Optocoupler Switch, the robot will avoid obstacles when they are about to collide.
Edge Sensor	With Infrared Ranging, the edge sensor detects the distance between the robot and objects on the side. When there is a wall or obstacles on the right, the robot performs edge cleaning to avoid missing any spots and prevent collisions.

INITIAL SETUP AND USE

① Notes Before Cleaning

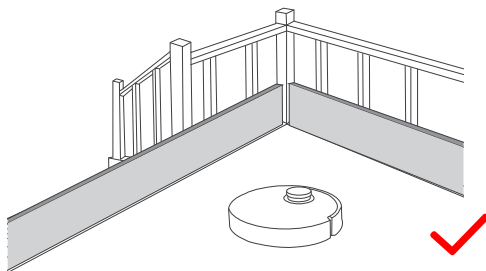
Tidy up the Area to be Cleaned

For the maximum cleaning area possible, before using the robot, please put furniture, such as tables, chairs, and pedestal fans, in their proper place and put away low-lying items, such as weight scales.



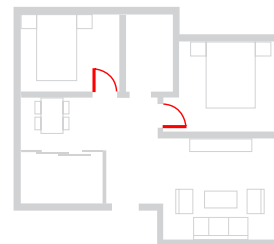
Prevent robot from Falling

Place a physical barrier at the edge of a drop, such as staircases and steps, to stop the robot from falling over the edge.



Open Doors and Help robot Explore

Open all room doors to help the robot fully explore your house during the first cleaning.



To improve cleaning efficiency, please remove objects, including cables, clothes, and slippers, from the floor.



Before using the product on a carpet with tasseled edges, please fold the tassels under the carpet.



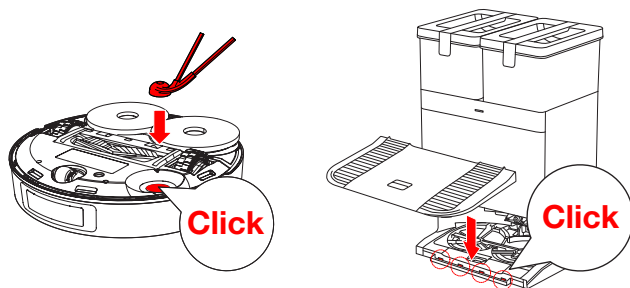
Please do not stand in narrow spaces, such as hallways, to avoid blocking TrueMapping.

2 Quick Start

Remove all protective materials before using.

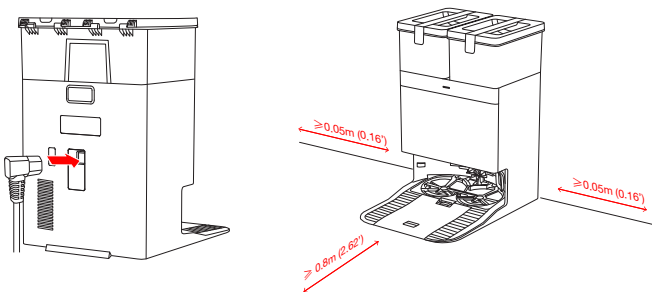
1. Installation

The sound of “click” indicates proper installation.



2. Assemble and Place the Station

Place the OMNI Station against a flat, hard surface. Do not place items within 0.05 meters on either side and 0.8 meters in front.

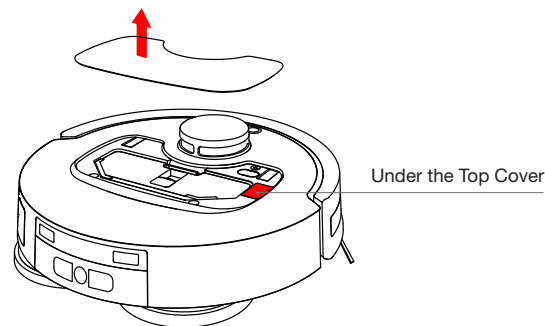


- If there are reflective objects such as mirrors and reflective skirting lines near the Station, the bottom 14 cm of such objects should be covered.
- Do not place the Station under direct sunlight.
- Place the station in a location with a strong Wi-Fi signal for better user experience.
- Do not use the appliance on wet surfaces or surfaces with standing water.
- Do not wipe the robot and the station with a damp cloth or use any liquid.

3 Download the ECOVACS HOME APP

To enjoy all available features, it is recommended that you control your robot via the ECOVACS HOME App.

1. Scan the QR Code under the Top Cover to download the App.



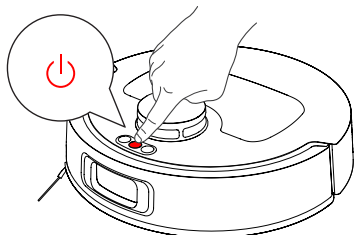
2. Search "ECOVACS HOME" on the App Store or Google Play to download the App.



Note: Follow the instructions on the App to complete the registration, login, and connection.

4 Power on Robot

1. Turn on the power switch and place the robot in front of the station that is connected to power supply.



5 Connect robot with APP


Name	Description
Charging Interface	Provides power to the station, and the main unit can connect with the charging contacts on the station for charging. The infrared interface is turned off by default, and it is activated when the robot is in the station.
Wi-Fi*	Facilitates data transfer between the app and the robot, enabling control of the robot through the App.
ECOVACS HOME App	ECOVACS products offer smart functions such as network setup, mapping, and cleaning mode selection (specific to each product). To utilize these features, users need to download and use the official ECOVACS Home App.

• The robot series robotic vacuums are designed for domestic cleaning scenarios. A home Wi-Fi network is required for operation, and anti-DDoS protection can be configured by users through route settings.

Wi-Fi Network Requirements:


- You are using a 2.4 GHz or 2.4/5 GHz mixed network.
- Your router supports 802.11b/g/n and IPv4 protocol.
- Do not use a VPN (Virtual Private Network) or Proxy Server.
- Do not use a hidden network.
- WPA and WPA2 use TKIP, PSK, and AES/CCMP encryption.
- WEP EAP (Enterprise Authentication Protocol) is not supported.
- Use Wi-Fi channels 1-11 in North America and 1-13 outside North America (refer to local regulatory agency).
- If you use a network extender/repeater, the network name (SSID) and password are the same as your primary network.
- Please enable WPA2 on your router.

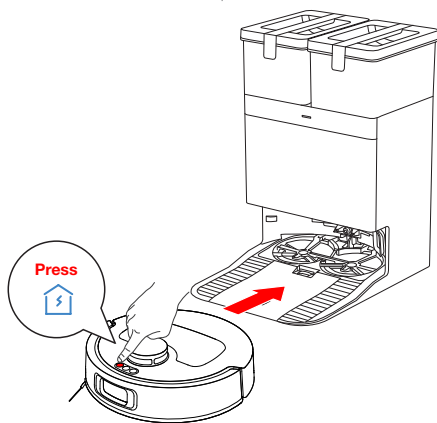
Wi-Fi Indicator Light

	Slow flashing white light	Disconnected from Wi-Fi
	Fast flashing white light	Connecting
	Steady white light	Connected to Wi-Fi

Please be aware that intelligent features such as remote startup, voice interaction, 2D/3D map display and control settings, and personalized cleaning (depending on the Appliance) require the ECOVACS HOME App, which is constantly updated. You need to agree to our Privacy Policy and User Agreement so that we can process some of your essential and necessary information before you can use certain features of the ECOVACS HOME App to control the Appliance. If you disagree with our Privacy Policy and User Agreement, such features will be unavailable. However, you can still use the basic features of this Appliance for manual operation.

6 Power on and Charge the robot

Use the ECOVACS HOME App to recall the robot, or press  on the robot to allow it to dock for charging.

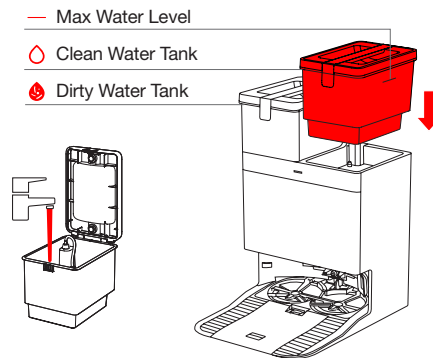


Note:

- When the robot is not in use, keep it powered on and charging.
- It is recommended to start cleaning from the station. Do not move the station while cleaning.

7 Fill the Clean Water Tank

Take out the clean water tank, open the tank cover, and fill the tank with water up to the maximum water level. Close the tank cover and re-install the clean water tank.

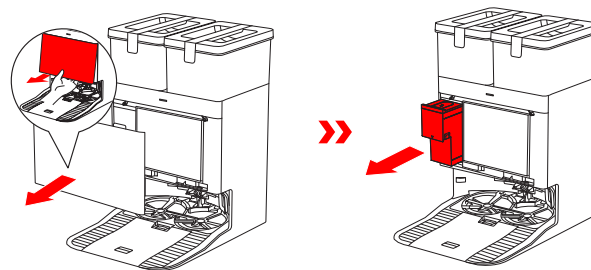


Note:

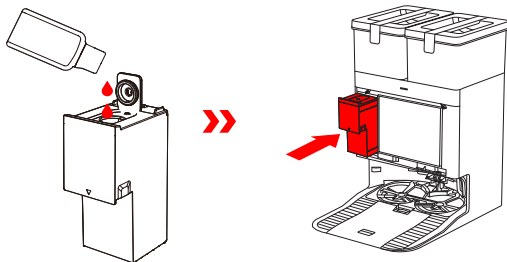
- Use a clean, dry cloth to wipe off any water on the surface of the tank before placing it in position.
- Make sure to lock the top covers of both water tanks securely before use.
- Any water marks in the water tanks are from function testing. Please use it with confidence.

8 Add Cleaning Solution (sold separately)

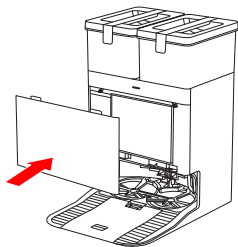
1. Take off the dust collection cabin cover, pull out the cleaning solution unit, and place it on a level, hard surface.



2. Unlid the cleaning solution unit and fill it with ECOVACS cleaning solution (sold separately). Put the lid on and the unit back to the station.



3. Place the fit joints at the upper edge of the dust collection cabin cover and press the lower part of it to install it properly.



Note:

- Cleaning solution is pumped automatically from the cleaning solution unit. Do not add cleaning solution to the water tanks.
- For better performance and longer lifespan of the product, please use ECOVACS DEEBOT cleaning solution (sold separately).
- Please make sure that no foreign objects fall into the cleaning solution unit.

9 Operate the robot

1. Start Mapping

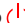
When creating a map for the first time, please follow the robot to help resolve some minor issues.

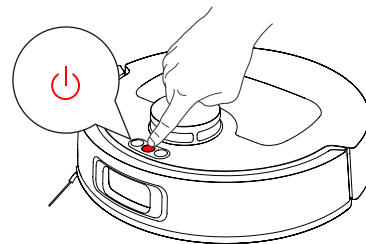
For example, the robot may get stuck under furniture. Please refer to the following solutions:

- ① Raise the low-sitting furniture if possible;
- ② Cover the bottom of the furniture;
- ③ Set up a virtual boundary via the App.

2. Start Cleaning

- The robot's water tank is automatically refilled through the station. Manual refilling is not needed.
- When mopping, the robot will recognize floor types and is able to lift mops automatically when encountering carpets. Please do not use the robot on shaggy rugs or carpets with fibres longer than 9 mm. It is recommended to fold up the shaggy rugs with fibres longer than 9 mm during the cleaning process, or set the shaggy carpeted area as a no-entry zone by setting virtual boundary in the ECOVACS HOME App.


Please ensure that the robot is in the station and is fully charged before cleaning for the first time. Tap  on the robot to start. You can also use the ECOVACS HOME App to start.




Note:

- Do not frequently remove washable mopping pads.
- Do not scratch the mopping pad plates with a rag or other objects.
- Replace the mopping pads in time as prompted by the App. Explore more accessories in the ECOVACS HOME App or at <https://www.ecovacs.com>.


3. Pause

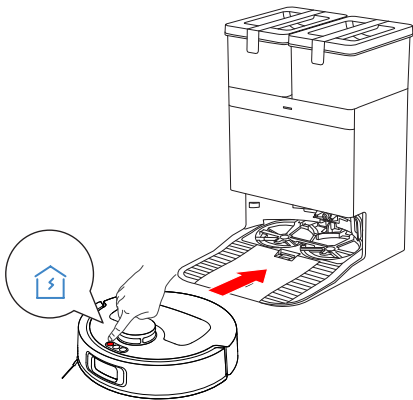
Tap  on the robot to pause it while it is working. You can also use the ECOVACS HOME App to pause the robot.

4. Wake up

After pausing for a while, all indicator lights on the robot will go out. To wake up the robot, press .

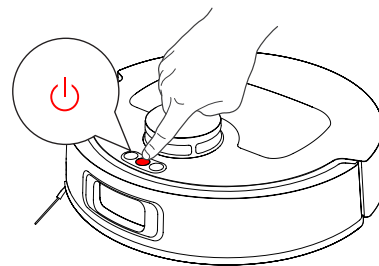
5. Back to Station

Use the ECOVACS HOME App to recall the robot, or press the  button on the robot to allow the robot to dock for charging.



6. Deep Sleep Mode

The robot will enter deep sleep mode if it stays outside the station for about 10 h to protect the battery. Please switch OFF and ON to wake the robot up.



REGULAR MAINTENANCE

① Maintenance Frequency

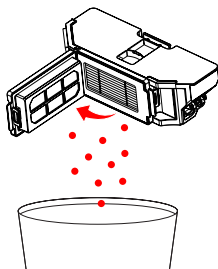
To keep robot running at peak performance, perform maintenance and replace parts at the following frequencies:

Robot Part	Maintenance Frequency	Replacement Frequency
Washable Mopping Pads	/	Every 1-2 months
Dust Bag	/	When App prompts
Side Brush	Every 2 weeks	Every 3-6 months
Main Brush	Every week	Every 6-12 months
Filter	Every week	Every 3-6 months
Edge Sensor Universal Wheel Anti-drop Sensors Bumper Charging Contacts on robot Charging Contacts on OMNI Station Navigation Module Obstacle Avoidance Module	Approx. every month	/
Clean Water Tank	Every 3 months	/
Dirty Water Tank	Every month	/
Dust Collection Cabin	Every month	/
Body and Bottom of the Station	Every month	/
Cleaning Solution Unit	Every month	/

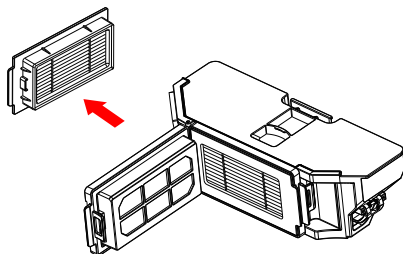
Note: Explore more accessories in the ECOVACS HOME App or at <https://www.ecovacs.com>.

2 Maintain Dust Bin and Filter

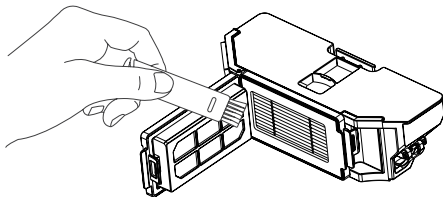
1. Open the cover and empty the bin.



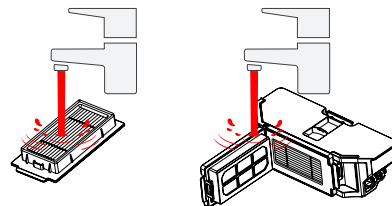
2. Open the filter net and remove the filter.



3. Clean the dust from both sides of the filter net.



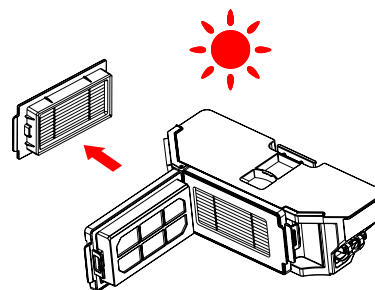
4. Rinse the dust bin and filter with water and shake off the water droplets.



Note:

- Please rinse the filter with water as shown.
- Do not use fingers or a brush to clean the filter.

5. Air dry.



Note:

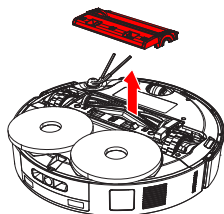
- Completely dry the filter before use.

③ Maintain Main Brush and Side Brush

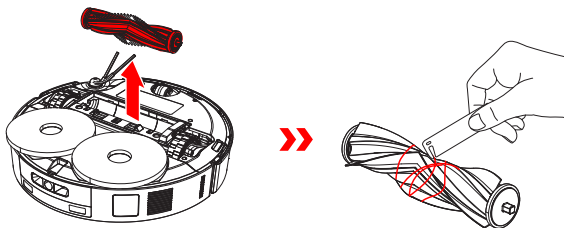
Note: Explore more accessories at ECOVACS HOME App or at <https://www.ecovacs.com>

Clean the Roller Brush

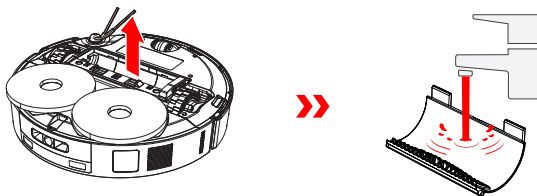
1. Open the cover.



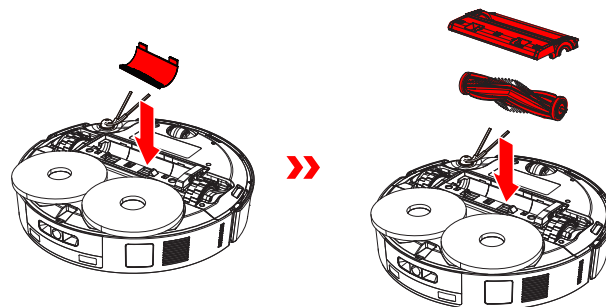
2. Remove and clean the main brush.



3. Remove the brush comb, clean it, then wipe it dry.



4. Install the brush comb, the main brush and the main brush cover.



Clean the Side Brush

1. Remove and clean the side brush.

