

Antenna Array Containing Antenna E (B41) and A & B (B25/B41), Attached to Reflector

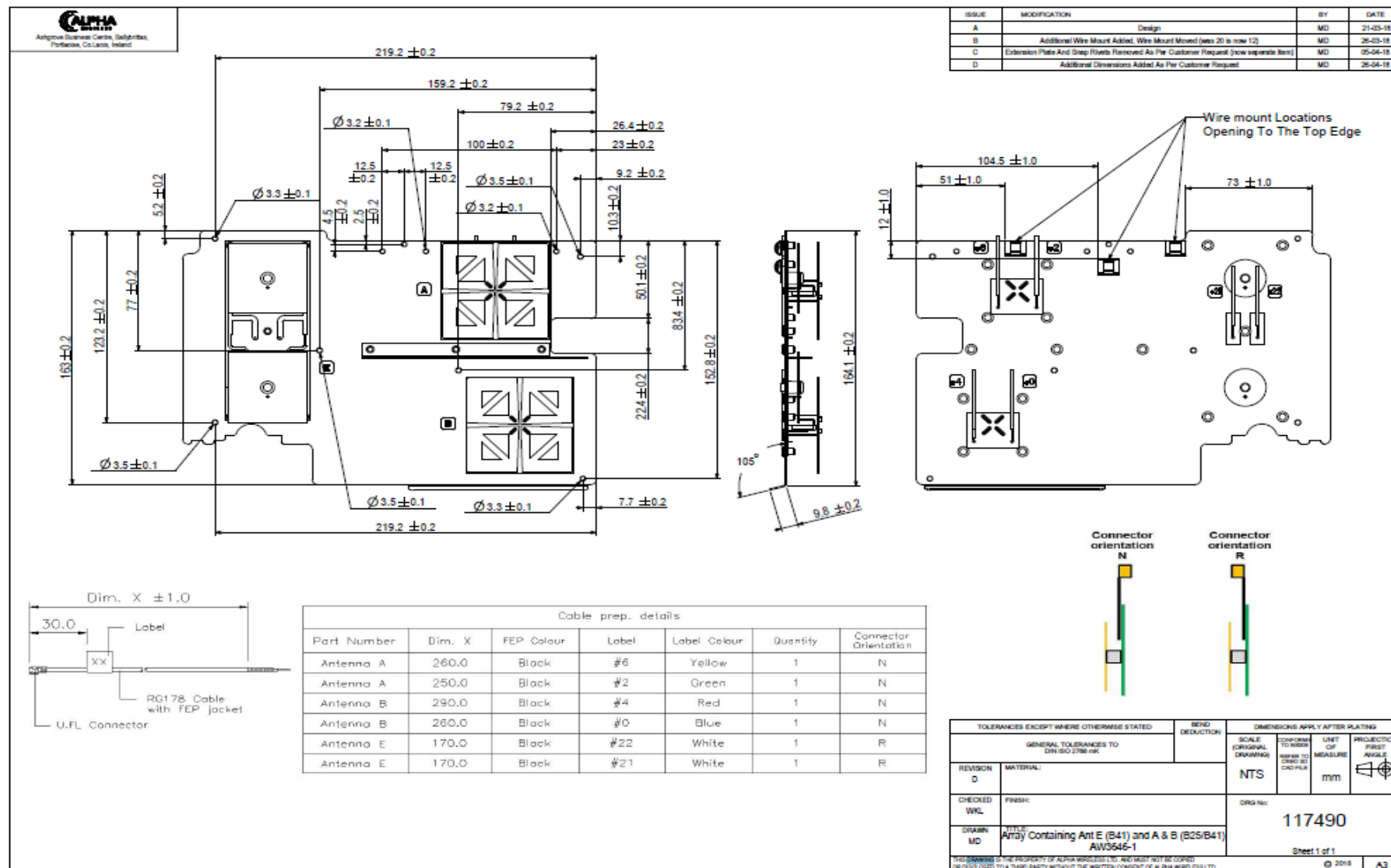
Antenna E

LTE band number	41
Frequency range	2496 – 2690 MHz
Average gain to RF connector	9.5 ± 1.0 dBi
Azimuth HPBW	65° ± 10°
Elevation HPBW	35° ± 5°
Polarisation discrimination at 0°	18 dB
Front to back ratio	≥ 25 dB
Polarisation	Dual Slant ±45°
Electrical Down-tilt	0°
Impedance	50 ohms
VSWR	≤ 2.0:1 Typical
Isolation between RF Ports	≥ 18 dB
Isolation between eNB & UE antenna	≥ 30 dB
Average transmission power per polarisation	26 dBm
Peak transmission power per polarisation	36 dBm
Recommended maximum dimensions (mm)	(See Outline Drawing on P2)
Connector type	2 x U.FL plug
Cable	RG178 with FEP Jacket
Cable length/colour/Connector Orientation	170mm/Black/R
Labelling	#22 & #21, White Labels
DC Grounding	NA

Antenna A (Top) & B (Bottom)

LTE band number	25	41
Frequency range	1850 – 1995 MHz	2496 – 2690 MHz
Average gain to RF connector	6.5 ± 1.0 dBi	7.0 ± 1.0 dBi
Azimuth HPBW	75° ± 10°	70° ± 10°
Elevation HPBW	70° ± 10°	68° ± 10°
Polarisation discrimination at 0°	14 dB	
Front to back ratio	≥ 22 dB	≥ 22 dB
Polarisation	Dual Slant ±45°	
Electrical Down-tilt	0°	
Impedance	50 ohms	
VSWR	≤ 2.0:1 Typical	
Isolation between RF Ports	≥ 18dB	
Isolation between eNB & UE antenna	≥ 30 dB	
Average transmission power per polarisation	26 dBm	
Peak transmission power per polarisation	36 dBm	
Recommended maximum dimensions (mm)	(See Outline Drawing on P2)	
Connector type	2 x U.FL plug	
Cable	RG178 with FEP Jacket	
Cable length/colour/Connector Orientation	260 & 250mm /Black/N (Antenna A) 290 & 260mm/Black/N (Antenna B)	
Labelling	#6, Yellow Label & #2, Green Label (Antena A) #4, Red Label & #0, Blue Label (Antena B)	
DC Grounding	NA	

AW3646-1-R2 Outline Drawing



© Alpha Wireless Limited 2014. Last modified: May, 02, 2018

Web: www.alphaantennas.com Email: info@alphaantennas.com

* Alpha Wireless are always improving products; specification subject to change without notice.