

## System Validation Plot (Output Power = 250mW)

12/17/01

### Dipole D900V2, S/N108, d = 15 mm

Generic Twin Phantom; Flat Section; Position: (90°,90°); Frequency: 900 MHz

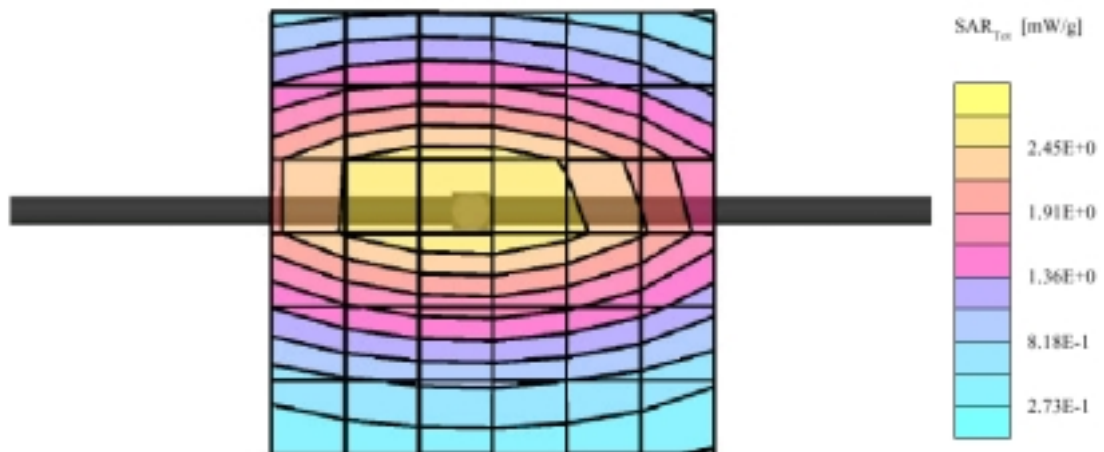
Probe: ET3DV6 - SN1577; ConvF(6.93,6.93,6.93); Crest factor: 1.0; Head 900 MHz:  $\sigma = 0.96$  mho/m  $\epsilon_r = 40.1$   $\rho = 1.00$  g/cm<sup>3</sup>

Cube 5x5x7: SAR (1g): 2.80 mW/g, SAR (10g): 1.78 mW/g, (Worst-case extrapolation)

Coarse: Dx = 10.0, Dy = 10.0, Dz = 10.0

Powerdrift: -0.01 dB

Liquid Temperature: 20.1°C



COMPLIANCE CERTIFICATION SERVICES

## System Validation - SAR vs. Z-Axis Plot

12/17/01

Dipole D900V2, S/N108, d = 15 mm

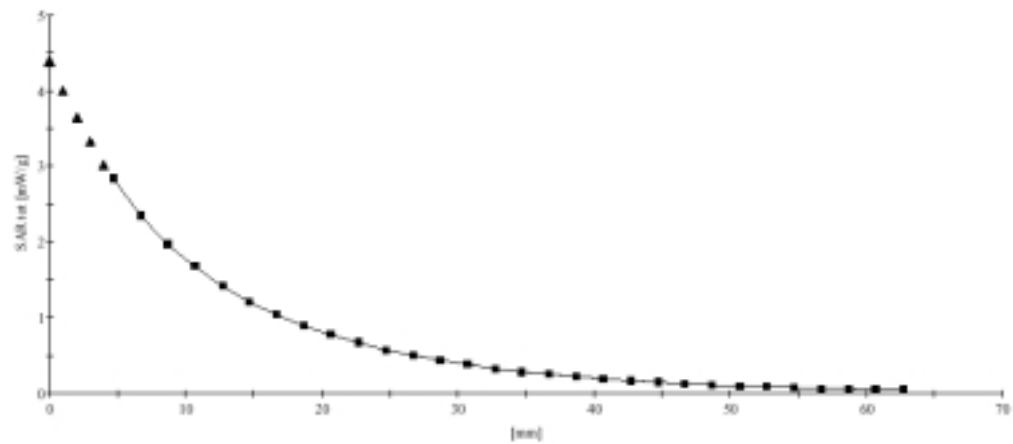
Generic Twin Phantom; Section; Position; ; Frequency: 900 MHz

Probe: ET3DV6 - SN1577; ConvF(6.93,6.93,6.93); Crest factor: 1.0; Head 900 MHz:  $\sigma = 0.96$  mho/m  $\epsilon_r = 40.1$   $\rho = 1.00$  g/cm<sup>3</sup>

; , ()

Z-Axis: Dx = 0.0, Dy = 0.0, Dz = 2.0

Liquid Temperature: 20.1°C



COMPLIANCE CERTIFICATION SERVICES

