

1. Antenna Description:

Antenna type	Internal antenna
Model	GS300-1
Frequency range	2400-2500MHz
Manufacturer	Shenzhen Jingyun Wulian Technology CO.,Ltd
Address	11/F, Building A, Dahong Zhigu, No.59, Gangzi Street, Shajing Xinqiao Street Bao'an District, Shenzhen, China
ANT Peak Gain	0.82 dBi

2. Antenna Photo:

Length: 24.63mm
Width: 0.84mm



3. Test Equipment & Conditions

3.1 Test instrument

VSWR is tested using Agilent E5071B connected to a hand mechanism, and the status is free space.

3.2 Test environment and methods

Dark room specifications: ETS-743

TD-SCDMA test equipment: StarPoint SP6010/Agilent 8960

LTE-TDD/FDD-SCDMA test equipment: StarPoint SP8011/CMW500

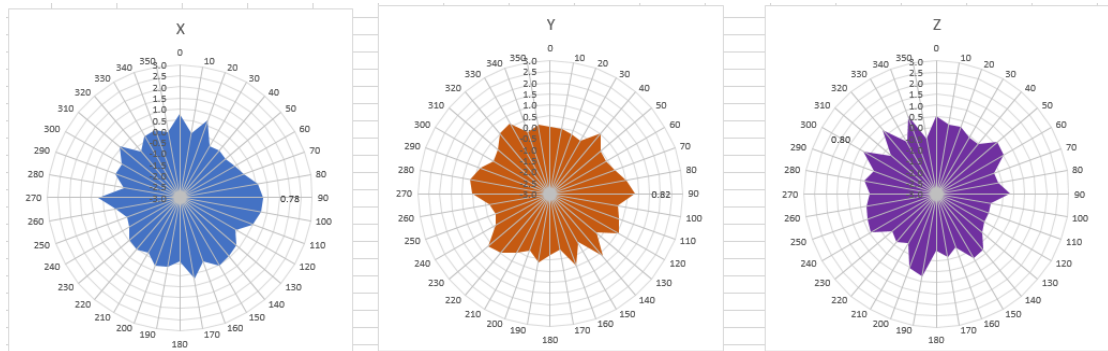
WCDMA/GSM/CDMA test equipment: Agilent 8960

Passive efficiency testing equipment: Agilent Technologies E5071B

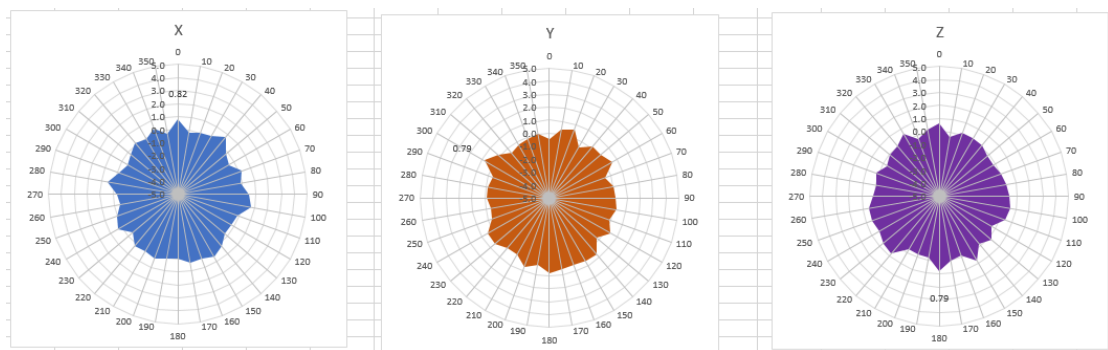


4 . Antenna Radiation Pattern

2400MHz



2450MHz



2500MHz

